

OREGON STATE HIGHWAY DEPARTMENT.
Located Line
HOOD RIVER BRIDGE SECTION
MT. HOOD HIGHWAY
HOOD RIVER COUNTY

Scale: 1 inch = 50 feet

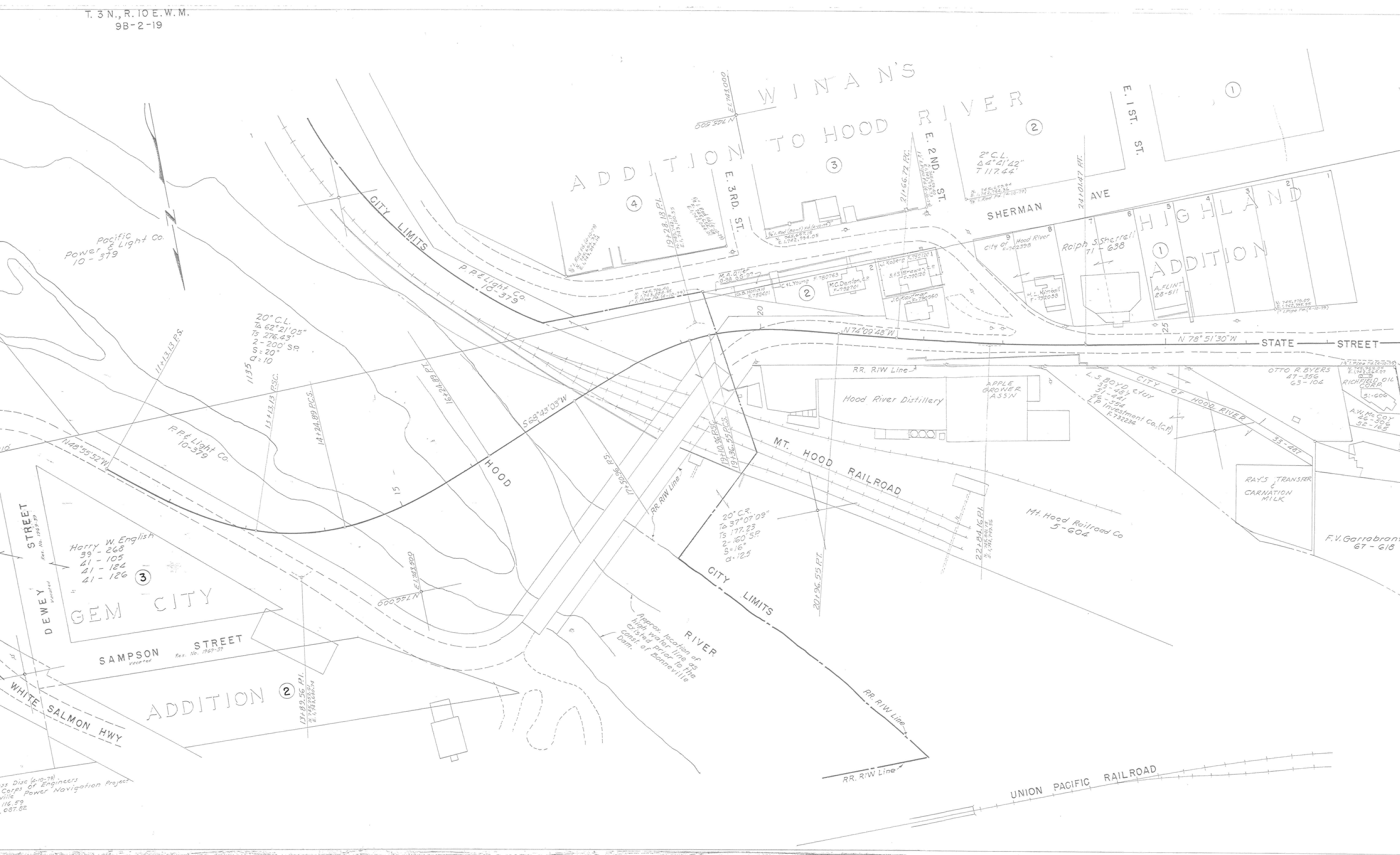
Traced by L. J. May, 1967 Revised: Dec. 1979

GRID BEARINGS-NORTH ZONE

DRG. NO. 9B-2-19

PRELIMINARY COPY
SUBJECT TO CHANGE





Pacific Power & Light Co.
10-379

20° C.L.
TA 62° 21' 05"
TS 276.43'
2-200' SR
CS = 20'
CS = 10'

WINNA'S
ADDITION TO HOOD RIVER

SHERMAN AVE
HIGHLAND ADDITION

GEM CITY
DEWEY STREET
SAMPSON STREET

ADDITION

HOOD RIVER
MT. HOOD RAILROAD
CITY LIMITS
RR. R/W Line

UNION PACIFIC RAILROAD

Horry W. English
39-268
41-105
41-124
41-126

20° C.R.
TA 37° 07' 09"
TS 177.23'
2-160' SR
CS = 16'
CS = 12.5'

Approx. location of
high water line as
existed prior to the
construction of Bonneville
Dam.

55 Disc (6-10-79)
Corps of Engineers
Power Navigation Project
116.59
087.82



HOOD RIVER BRIDGE SEC.
 MT. HOOD HWY.
 HOOD RIVER CO.
 MAY, 1967 SCALE: 1" = 50'
 DRG. NO. 9B-2-19