

OREGON STATE HIGHWAY DEPARTMENT

Located Line

PARKDALE - FIKES CORNER SECTION

MT. HOOD HIGHWAY

HOOD RIVER COUNTY

Scale: 1 inch = 100 feet

Traced by L. J.

May, 1967
REV. Feb. 1970
Feb. 1971
Sept. 1977

GRID BEARINGS-NORTH ZONE

PART 2 OF 2 PARTS

DRG. NO. 9B-2-12

SEE 9B-2-11

N20°44'E

670+63.39 P.S.

240'
+00

675+13.39 P.S.C.

G° C.R.
50° 30' 30"
679.20
450.5 P.S.
13° 30'
D = 113

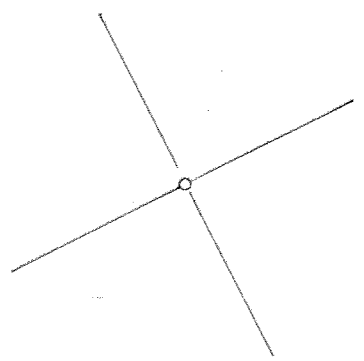
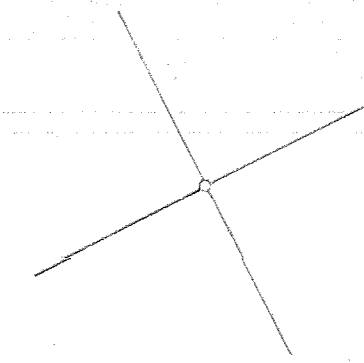
679+03.20 P.C.S.

C.R. & L.E. Hole
64-236
M. & A. Faubion
Film # 691844

677+42.59 P.I.
N 70° 6' 78.2" E
61732.333 69

LOT 8

683+55.20 P.T.



T. 1 N., R. 10 E. W.M.
9B-2-12

T. 2 N., R. 10 E. W.M.
9B-2-12

67742.59 PI.
N 70° 6' 702.81
E 1732.333.69

Sec. Cor. Found
N 70° 8' 946.60
E 1732.924.27

LOT 8

LOT 4

LOT 3

R.E. & A. Perkins
64-237

J.P. Hounsell
Mt. Hood Orchards (C.P.)
Scale: 1" = 800'
File: 42272

J.P. Hounsell
25-597
Mt. Hood Orchards, Inc. (C.P.)

J.P. Hounsell, et al
67-320
29-212
67-323
Mt. Hood Orchards Inc. (C.P.)

J.P. Hounsell
31-406
Mt. Hood Orchards Inc. (C.P.)

H.J. & M.F. Hogen
25-573

42274
2.0 Act. File RA

15.2 Act. File RA

15 Act. RT

BOOTH HILL
28-18-30-02 PI.
N 70° 8' 833.20
E 1735.580.07

Notes
236
Faubion
691844

K.G. & L.S. Bartrum
F-701426

O.S.H.D.
27-544
See IR-2-688

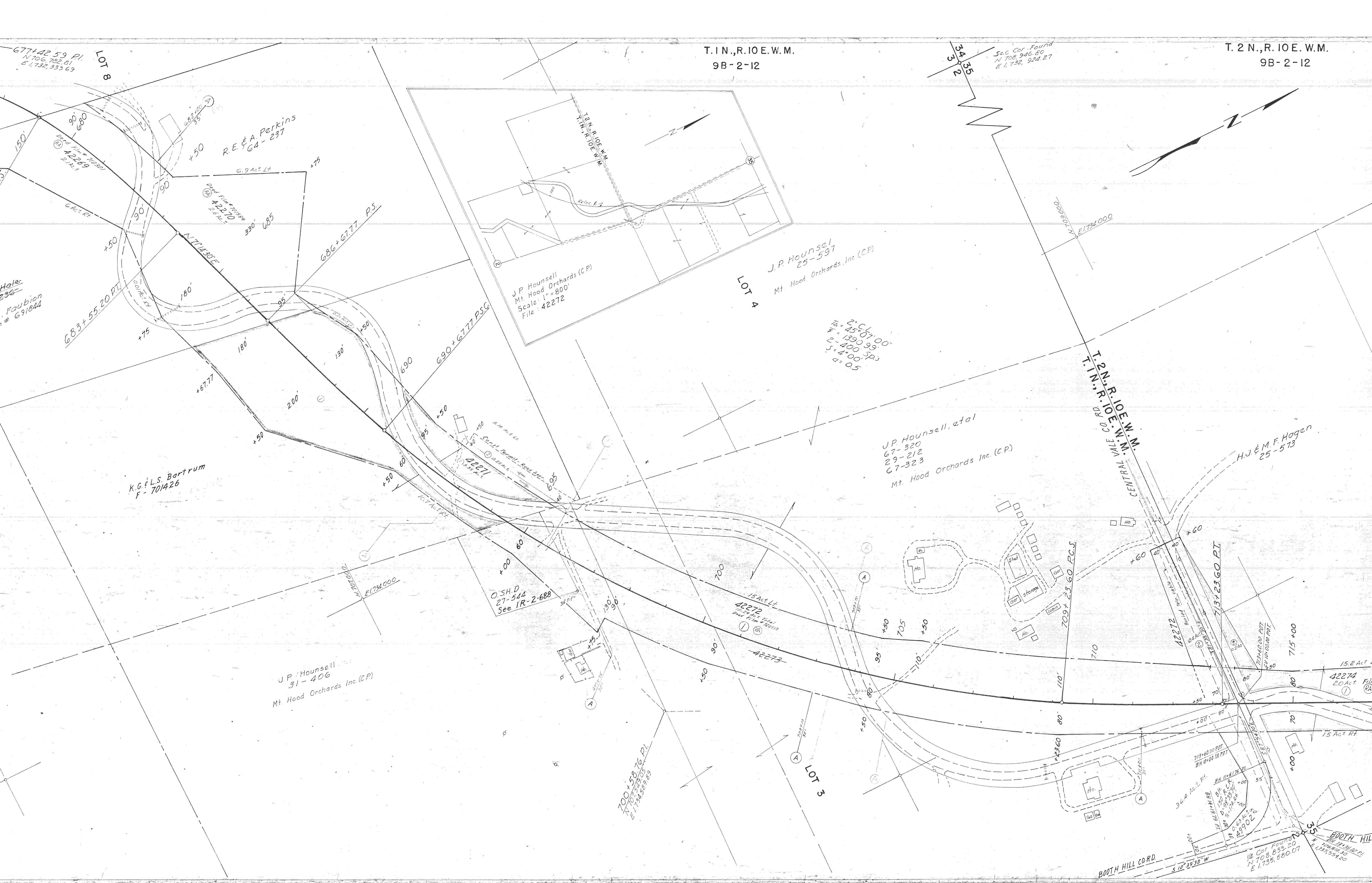
15 Act. L.L.
42272
2.0 Act. File RA

700+58.76 PI.
N 70° 8' 833.20
E 1735.580.07

BOOTH HILL CORD
S 10° 39' 30" W

713+60.00 POT
BN 11+00 ON PAT
3.6+2 Act. PI.
BN 11+00
10 66-81-11-11
299028

715+00
715+00
715+00



OREGON STATE HIGHWAY DIVISION

Located Line

WILLOW FLAT ROAD-FIKES CORNER SECTION

MT. HOOD HIGHWAY

HOOD RIVER COUNTY

SCALE: 1" = 100' GRID BEARINGS-NORTH ZONE

PORTION OF DRG. NO. 9B-2-12

'Set Pin' Indicates Set 5/8" x 30" Capped Iron Pin

H.J. & M.F. Hogen
25-573

Roy T. Yasui
29-204

2° C.L.
T_A = 9° 00'
T_S = 425.62
L = 400' Sp's
S = 4° 00'
a = 0.5

Roy M. Snabel
64-182
64-419

G.E.H. Co. Tamura
28-483

J.R. Down
25-618 & 45-541
O & N. Fairchild
76-269

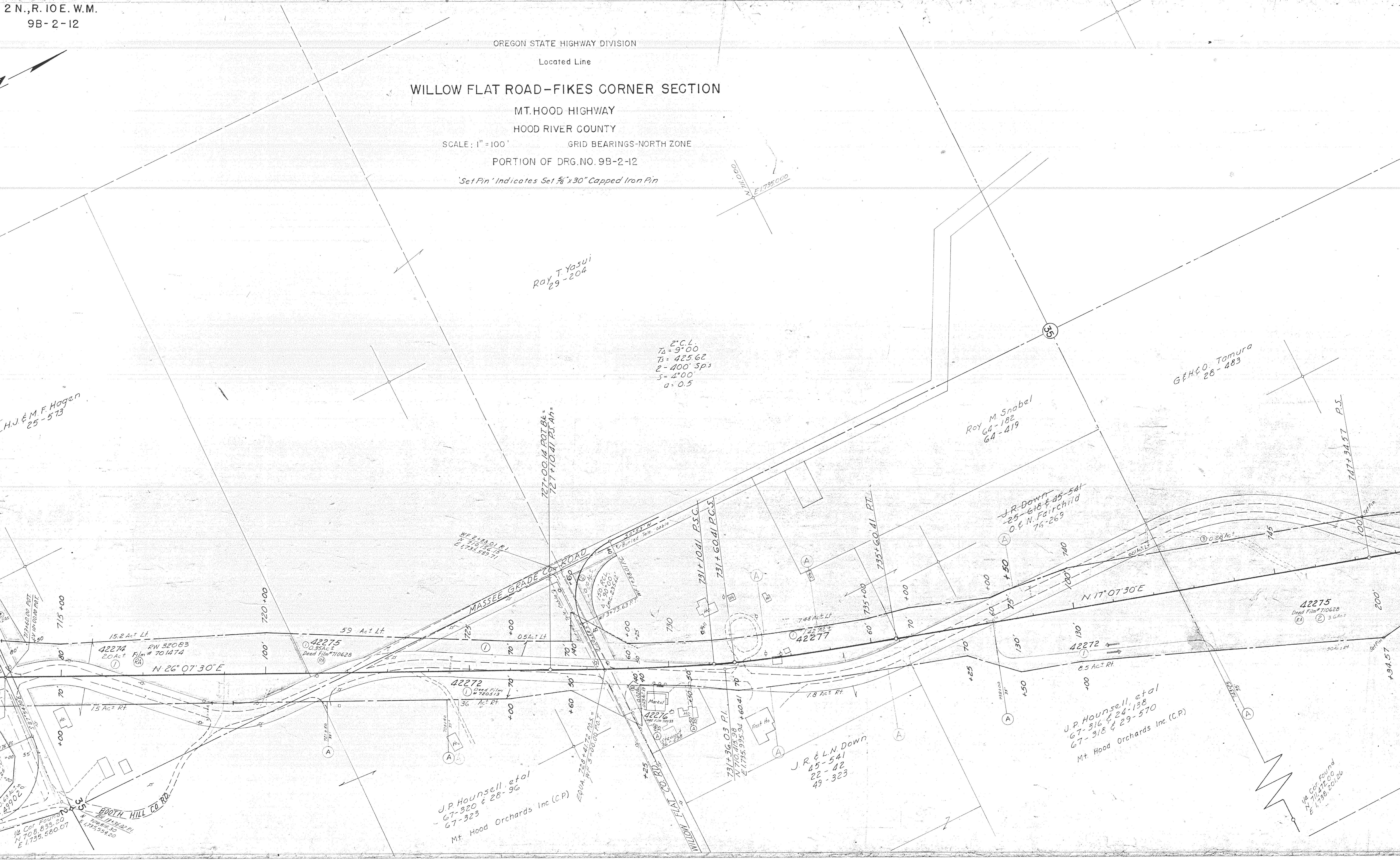
J.P. Hounsell, et al
67-316 & 24-138
67-318 & 29-570
Mt. Hood Orchards Inc. (C.P.)

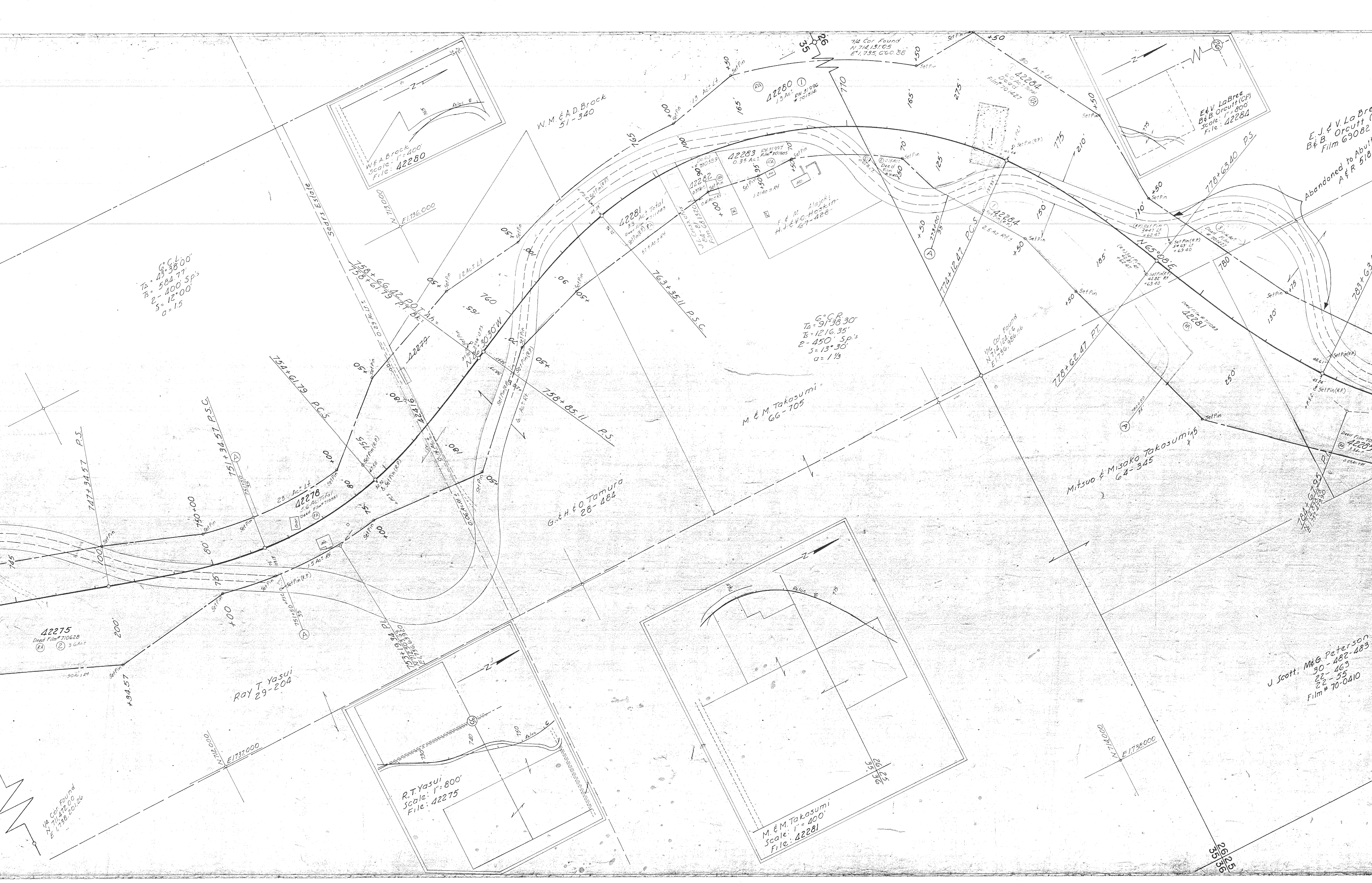
J.R. & L.N. Down
45-541
22-42
49-323

J.P. Hounsell, et al
67-320 & 28-96
67-323
Mt. Hood Orchards Inc. (C.P.)

42275
Deed Film # 710628
(RA) (2) 3.6 Ac±

W. Cor. Found
N 71° 42' 00"
E 175° 58' 00" 26





G.C.L.
T₂ = 43° 38' 00"
T₃ = 58° 47'
S = 400 SP's
a = 15

G.C.R.
T₂ = 91° 38' 30"
T₃ = 121° 35'
S = 450 SP's
a = 1 1/3

42275
Dead Film # 710620
3 G.A.C.
90 A.C. 24

ROY T. Yasui
29-204

R.T. Yasui
Scale: 1" = 800'
File: 42275

M. & M. Takasumi
Scale: 1" = 400'
File: 42281

J. Scott; MEG Peterson
30-482-483
22-463
22-55
Film # 70-0410

W.M. & A.D. Brock
51-340

42280
13 Ac.
RN 21996
701514

E.V. LaBrec
B&B Orcutt (CP)
Scale: 1" = 800'
File: 42284

E.J. & V. LaBrec
B&B Orcutt (CP)
Scale: 1" = 800'
File: 69082
Abandoned to About
A & R 518

M. & M. Takasumi
GG-705

G. & H. & O. Tamura
28-484

Mitsuo & Misako Takasumi's
G4-345

Dead Film # 70-0410
42281
3 Ac. 24

1/4 Cor Found
N. 714 131.05
E. 1735.660.88

1/4 Cor Found
N. 714 131.05
E. 1735.660.88

000211 N
E 1738.000

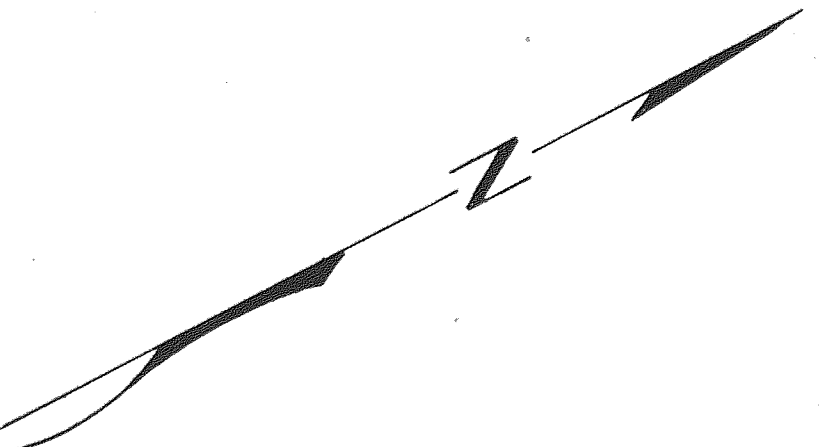
000211 N
E 1738.000

WEA Brock
Scale: 1" = 400'
File: 42280

R.T. Yasui
Scale: 1" = 800'
File: 42275

M. & M. Takasumi
Scale: 1" = 400'
File: 42281

J. Scott; MEG Peterson
30-482-483
22-463
22-55
Film # 70-0410



E. J. & V. L. Bree
B. & B. Orcutt (C.P.)
Film 69082
Abandoned to Abutting Owners
A & R 518

D. & A. Adams
M. H. & M. E.
Picking (C.P.)

Abandoned to County
A & R 518

Mt. Hood Railroad

Abandoned to County A & R 518

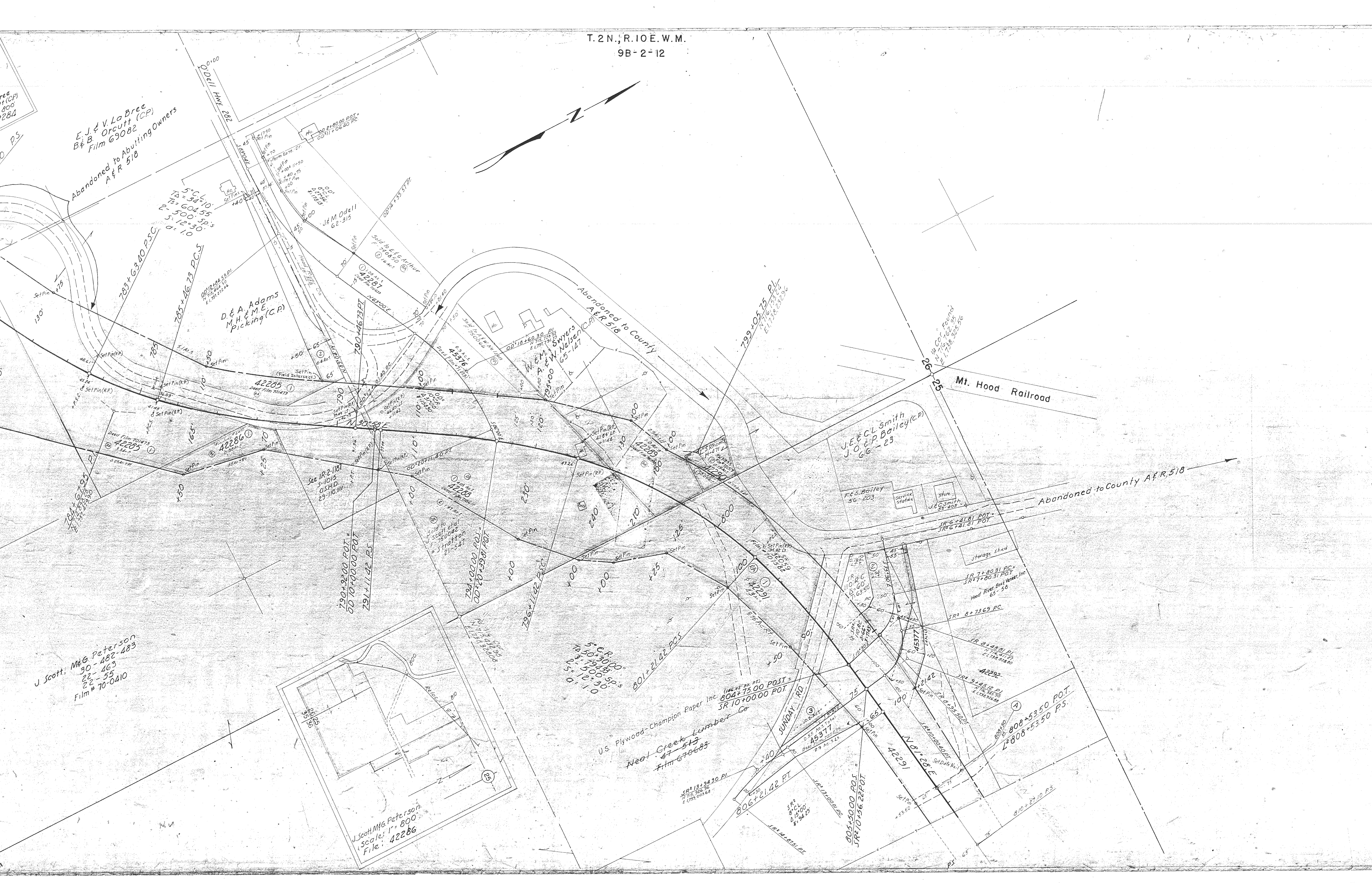
J. E. & C. L. Smith
J. O. & P. Bailey (C.P.)
66-23

J. Scott, M & G Peterson
30-482-483
22-55
Film # 70-0410

J. Scott, M & G Peterson
Scale: 1" = 800'
File: 42286

U.S. Plywood-Champion Paper Inc.
Neel Creek Lumber Co
Film 670683
SR 10+7000 POT =
804+75.00 POST =
SR 10+7000 POT

SR 8+7369 PC
SR 9+4512 PI
SR 10+5350 PI
SR 11+4512 PI
SR 12+5350 PI
SR 13+4512 PI
SR 14+5350 PI
SR 15+4512 PI
SR 16+5350 PI
SR 17+4512 PI
SR 18+5350 PI
SR 19+4512 PI
SR 20+5350 PI
SR 21+4512 PI
SR 22+5350 PI
SR 23+4512 PI
SR 24+5350 PI
SR 25+4512 PI
SR 26+5350 PI
SR 27+4512 PI
SR 28+5350 PI
SR 29+4512 PI
SR 30+5350 PI
SR 31+4512 PI
SR 32+5350 PI
SR 33+4512 PI
SR 34+5350 PI
SR 35+4512 PI
SR 36+5350 PI
SR 37+4512 PI
SR 38+5350 PI
SR 39+4512 PI
SR 40+5350 PI
SR 41+4512 PI
SR 42+5350 PI
SR 43+4512 PI
SR 44+5350 PI
SR 45+4512 PI
SR 46+5350 PI
SR 47+4512 PI
SR 48+5350 PI
SR 49+4512 PI
SR 50+5350 PI
SR 51+4512 PI
SR 52+5350 PI
SR 53+4512 PI
SR 54+5350 PI
SR 55+4512 PI
SR 56+5350 PI
SR 57+4512 PI
SR 58+5350 PI
SR 59+4512 PI
SR 60+5350 PI
SR 61+4512 PI
SR 62+5350 PI
SR 63+4512 PI
SR 64+5350 PI
SR 65+4512 PI
SR 66+5350 PI
SR 67+4512 PI
SR 68+5350 PI
SR 69+4512 PI
SR 70+5350 PI
SR 71+4512 PI
SR 72+5350 PI
SR 73+4512 PI
SR 74+5350 PI
SR 75+4512 PI
SR 76+5350 PI
SR 77+4512 PI
SR 78+5350 PI
SR 79+4512 PI
SR 80+5350 PI
SR 81+4512 PI
SR 82+5350 PI
SR 83+4512 PI
SR 84+5350 PI
SR 85+4512 PI
SR 86+5350 PI
SR 87+4512 PI
SR 88+5350 PI
SR 89+4512 PI
SR 90+5350 PI
SR 91+4512 PI
SR 92+5350 PI
SR 93+4512 PI
SR 94+5350 PI
SR 95+4512 PI
SR 96+5350 PI
SR 97+4512 PI
SR 98+5350 PI
SR 99+4512 PI
SR 100+5350 PI



T.2N.,R.10E.W.M.
9B-2-12

23/24
26/25

Found 2nd Axle
N 719,397.85
E 1,738,375.47

Creek Lumber Co.
51-572

L.E.H. Diamond
R. & J. Smiley
Scale: 1" = 40'
File: 42298

L.E.H. Diamond
R. & J. Smiley
69-271

L.E.H. Diamond
R. & J. Smiley (C.P.)
69-271

E. Williams, et ux
690828

1/2
C.45 C.L.
78-90' 05"
2343, 23
500 sps
5-6-32-30"
0-0.55

W. & N. Murphy
73-255
73-257

36369
8.16 Act

Sold to U.S.
Plywood - Champion
Paper, Inc.
Film # 701610
20.2 Act

36369
12.06 Act
RW 31100
Film # 691087

42294
Deed RW 31109
Film # 691200

SEE OWNERSHIP
MAP ABOVE
SEE IR-4-465
FOR ADD. RW

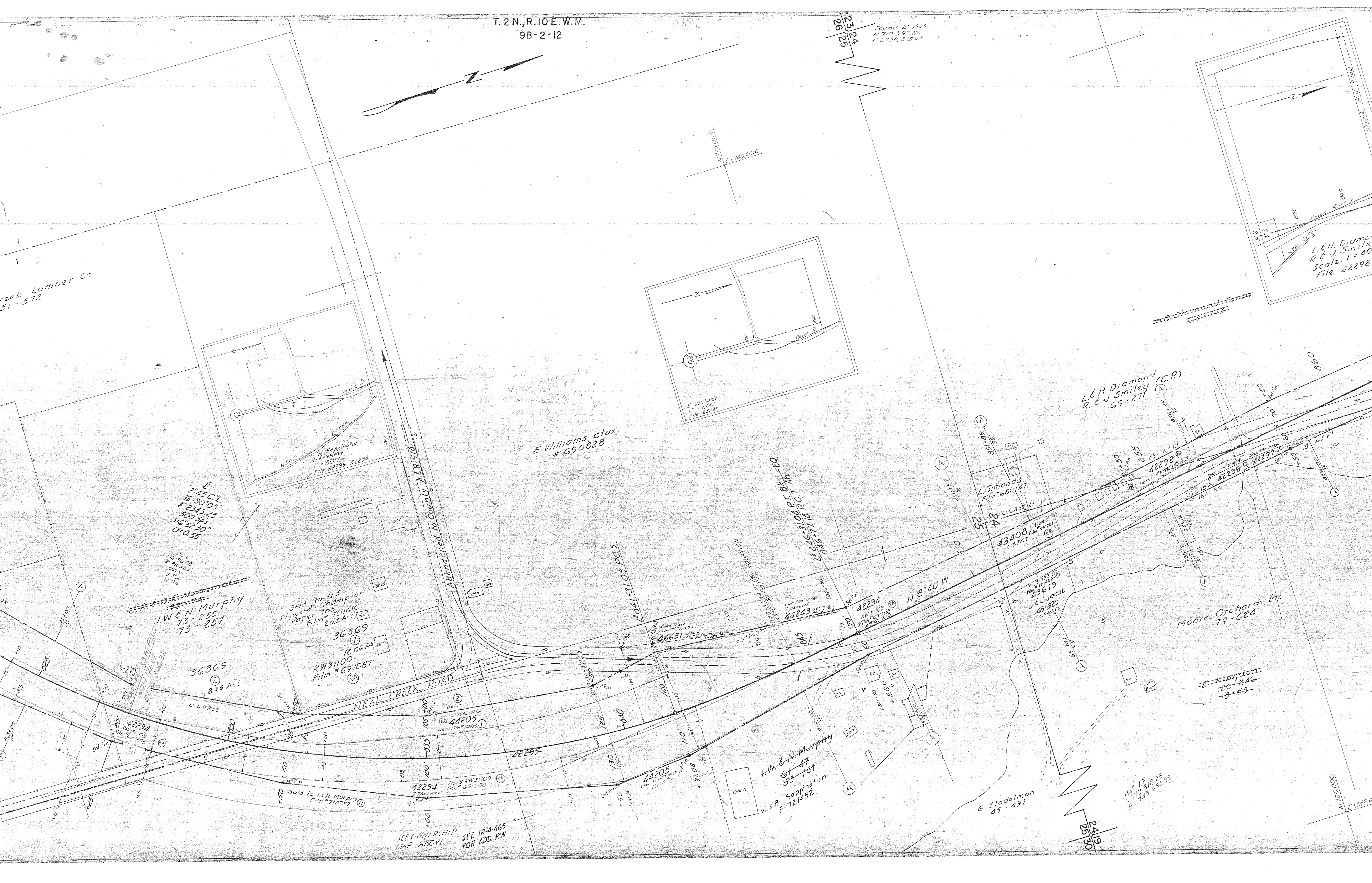
W. & N. Murphy
61-47
53-167
W. & B. Sappington
F-721452

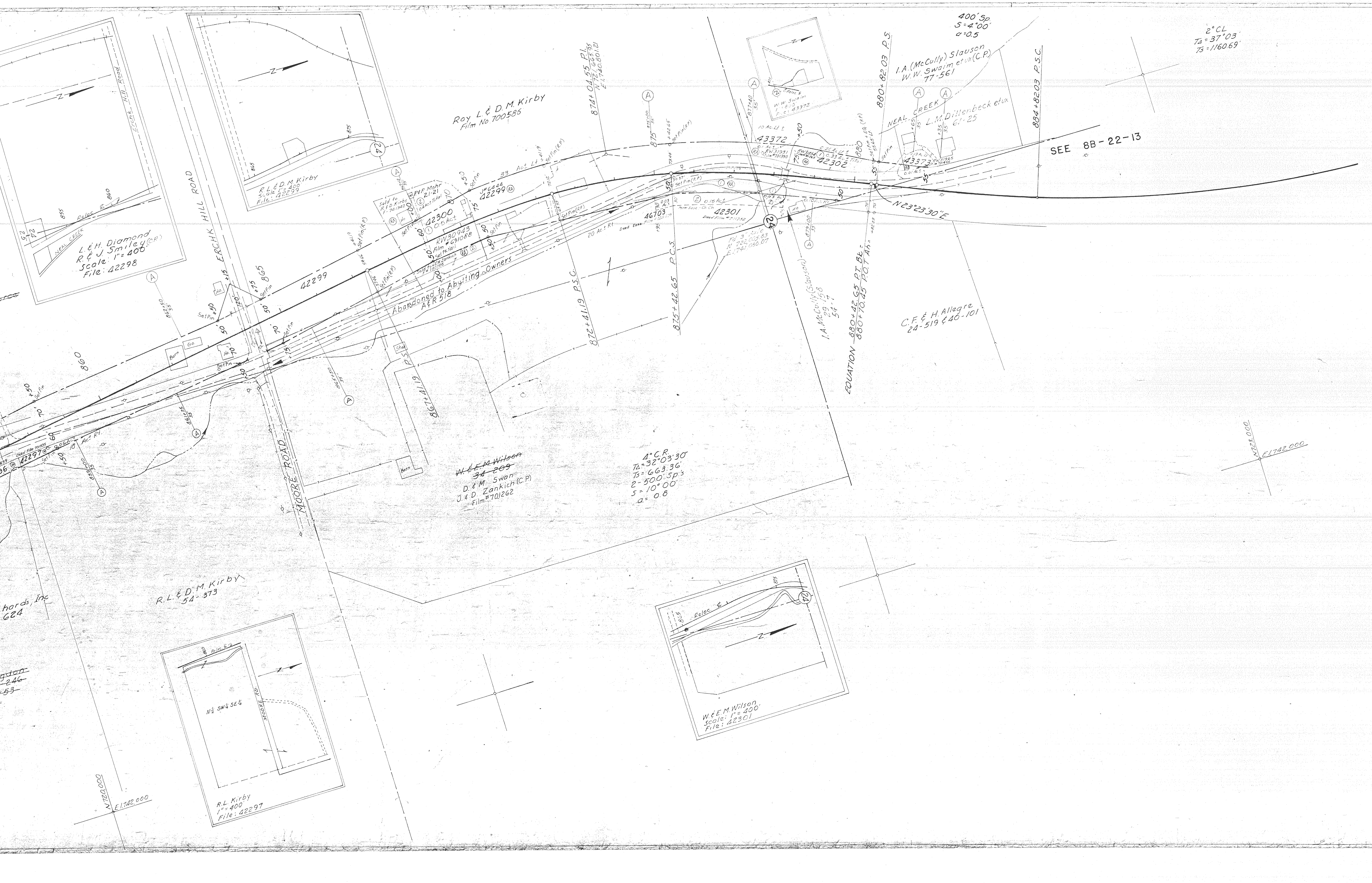
G. Stadelman
45-497

Moore Orchards, Inc
79-624

E. Kingdon
60-246
78-53

1/4
N 719,318.23
E 1,743,694.99





Roy L & D.M. Kirby
Film No 700585

L. & H. Diamond
R. & J. Smiley (C.P.)
Scale: 1" = 400'
File: 42298

R.L. & D.M. Kirby
54-373

R.L. Kirby
1" = 400'
File: 42297

W. & E.M. Wilson
34-209
D. & M. Swan
J. & D. Zankich (C.P.)
Film # 701262

1° C.R.
TA = 32° 03' 30"
TS = 663.36'
2-500' Sp's
5 = 10° 00'
a = 0.8

400' Sp.
S = 4' 00"
a = 0.5

2° CL
TA = 37° 03'
TS = 1160.69'

SEE 8B-22-13

I.A. (McCully) Slauson
W.W. Swaim et ux (C.P.)
77-561

L.W. Dillenbeck et ux
61-25

C.F. & H. Allagra
24-519 & 40-101

W. & E.M. Wilson
Scale: 1" = 400'
File: 42301

874 ± 01.55 P.L.
N 72° 05' 55" E
E 1740.80 ± 1.21

880 ± 82.03 P.S.

884 ± 82.03 P.S.C.

872 ± 41.19 P.S.C.

875 ± 42.65 P.C.S.

EQUATION
880 ± 42.65 P.T. BE
29 1/8
54-7

N 23° 23' 30" E

N 23° 00' 00"
E 1742.000

N 72° 00' 00"
E 1742.000

hards, Inc
624

246
53

42297

42298

42301

42302

42303

42304

42305

42306

42307

42308

42309

42310

42311

42312

42313

42314

42315

42316

42317

42318

42319

42320

42321

42322

42323

42324

42325

42326

42327

42328

42329

42330

42331

42332

42333

42334

42335

42336

42337

42338

42339

42340

42341

42342

42343

42344

42345

42346

42347

42348

42349

42350

42351

42352

42353

42354

42355

42356

42357

42358

42359

42360

42361

42362

42363

42364

42365

42366

42367

42368

42369

42370

42371

42372

42373

42374

42375

42376

42377

42378

42379

42380

42381

42382

42383

42384

42385

42386

42387

42388

42389

42390

42391

42392

42393

42394

42395

42396

42397

42398

42399

42400

42401

42402

42403

42404

42405

42406

42407

42408

42409

42410

42411

42412

42413

42414

42415

42416

42417

42418

42419

42420

42421

42422

42423

42424

42425

42426

42427

42428

42429

42430

42431

42432

42433

42434

42435

42436

42437

42438

42439

42440

42441

42442

42443

42444

42445

42446

42447

42448

42449

42450

42451

42452

42453

42454

42455

42456

42457

42458

42459

42460

42461

42462

42463

42464

42465

42466

42467

42468

42469

42470

42471

42472

42473

42474

42475

42476

42477

42478

42479

42480

42481

42482

42483

42484

42485

42486

42487

42488

42489

42490

42491

42492

42493

42494

42495

42496

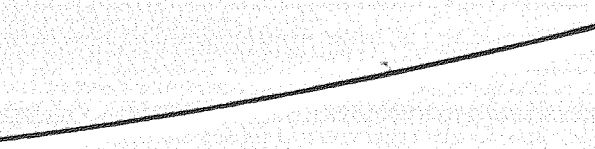
42497

42498

42499

42500

3
9



PARKDALE — FIKES CORNER SEC
MT. HOOD HIGHWAY
HOOD RIVER CO PART 2 OF 2 PARTS
MAY, 1967 SCALE: 1" = 100'
DRG. NO. 9B-2-12
REV. SEPT., 1977

