

DRG. NO. 8B-23-14

SCALE: 1" = 100'

LOC. LINE

YAWHIGH HOOD RIVER SECTION

WHISKEY CREEK - HOOD RIVER SECTION

*Whiskey Creek → Hood River  
Aug 35 1961  
Loc. Line*

OREGON STATE HIGHWAY DEPARTMENT

Located Line

# WHISKEY CREEK - HOOD RIVER SECTION

## MT. HOOD HIGHWAY

HOOD RIVER COUNTY

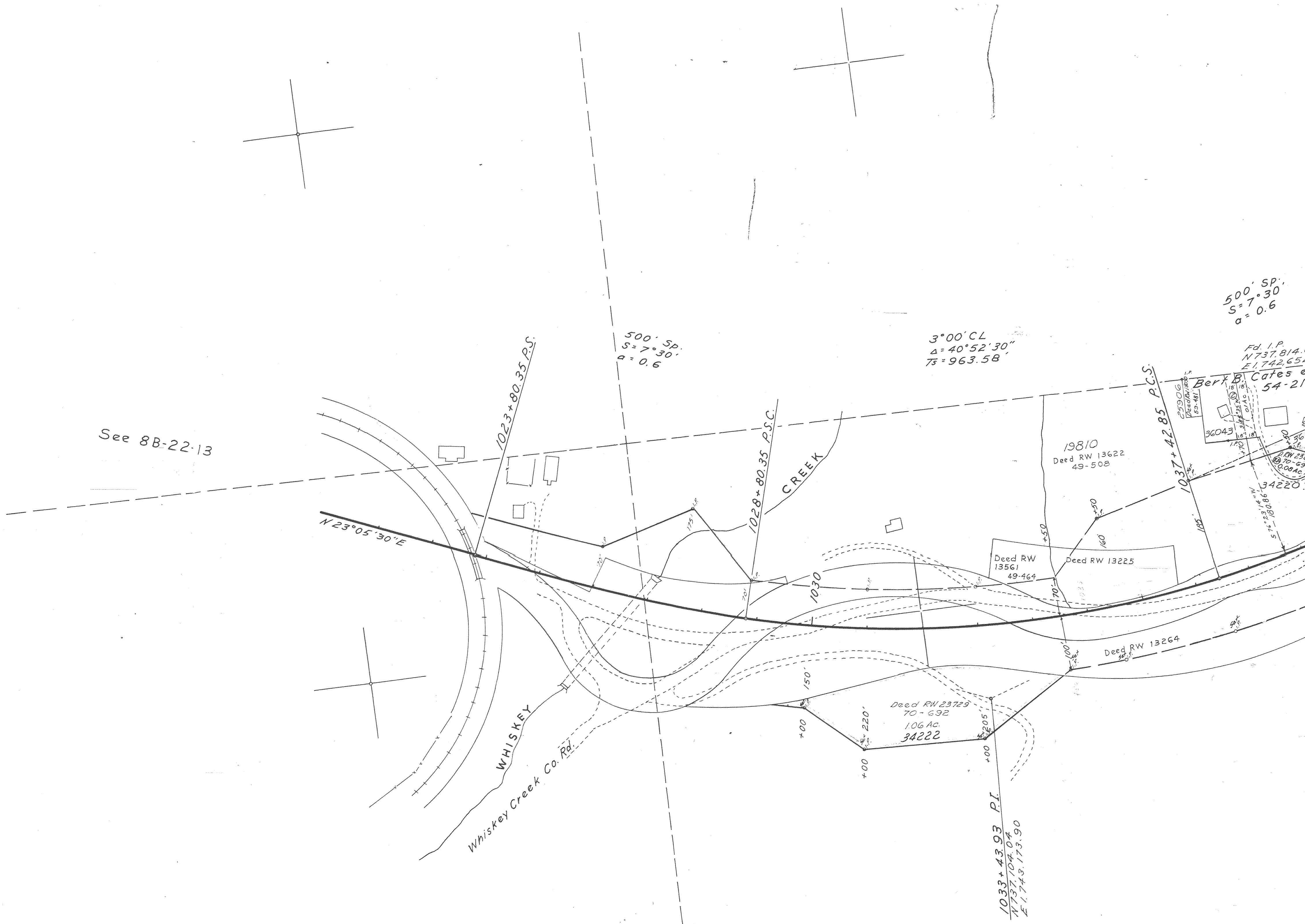
Scale: 1 inch = 100 feet

Traced by M.L.J.

Aug., 1961

GRID BEARINGS-NORTH ZONE

DRG. NO. 8B-23-14



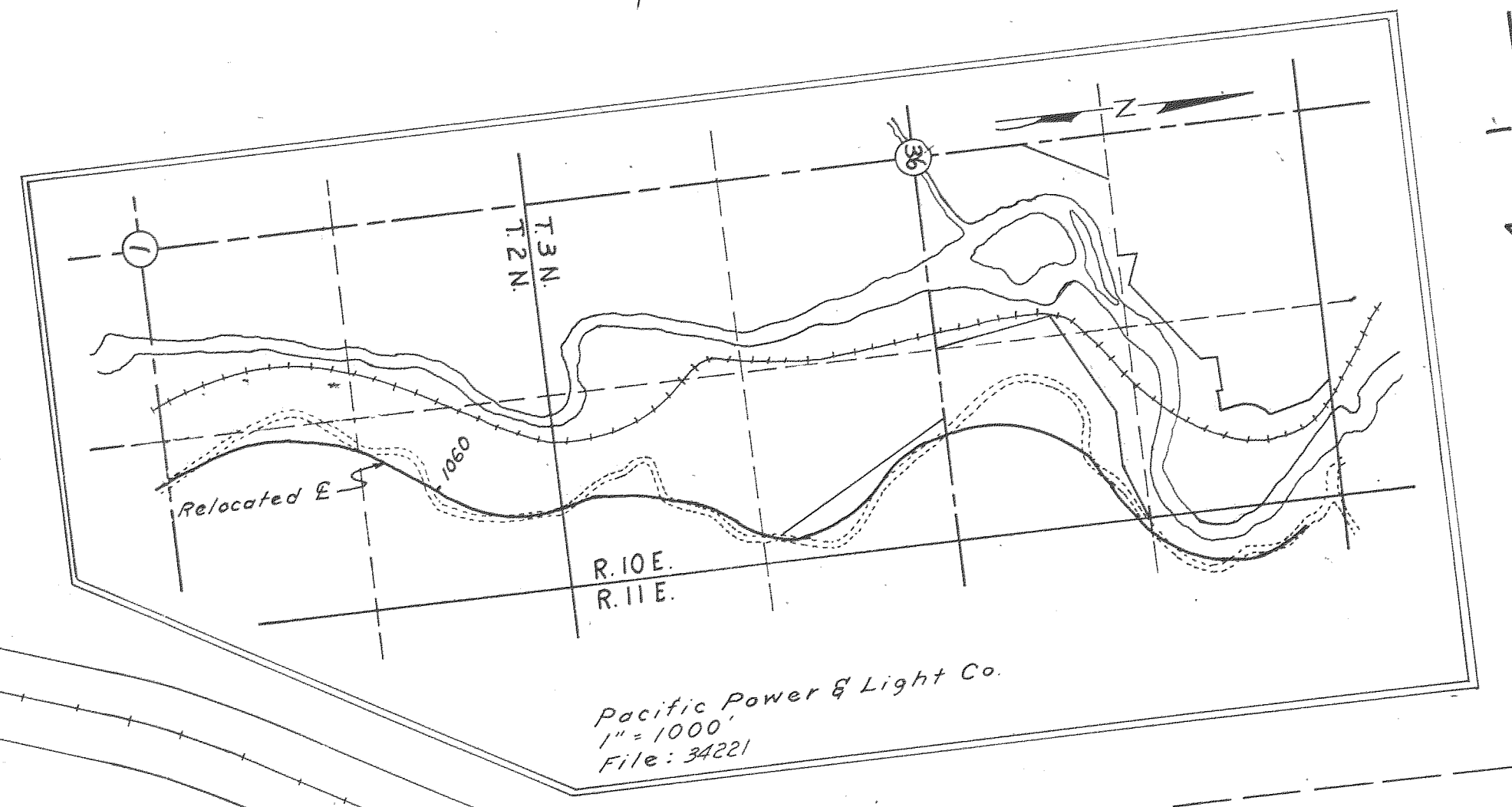
D-1035-61

E 1,742,000  
N 738,000

Pacific Power & Light Co.  
10-403

U.S.A. Transmission Line Ease.  
28-179

1050+96.85 P.I.  
N 738,834.77  
E 1,742,618.78



Pacific Power & Light Co.  
1" = 1000'  
File: 34221

500' SP.  
S = 7° 30'  
a = 0.6

Fd. I.P.  
N 737,814.03  
E 1,742,652.18  
Berk & Cates et al  
54-219

1042+42.85 P.T.

1044+30.25 P.T.

Abandoned  
To Abutting  
Owners  
R.R. 443

Pacific Power & Light Co  
5-614

400' SP.  
S = 14° 00'  
a = 1.75

7° 00' CL  
Δ = 51° 11'  
Ts = 595.51

400' SP.  
S = 14° 00'  
a = 1.75

Fd. I.P.  
N 737,813.16  
E 1,742,881.18

0.83 Ac.  
34222  
120 Ac. = Rt.

Deed RW 14359

O.S.H.D.  
51-448

450' SP.  
S = 13° 30'  
a = 1 1/3

6° 00' CR  
Δ = 58° 46' 30"  
Ts = 767.35'

450' SP.  
S = 13° 30'  
a = 1 1/3

Roy Webster Orchards, Inc.  
44-610

FOR PRIOR RW ACQUISITION  
SEE 7B-13-17

Pacific Power & Light Co.  
5-614

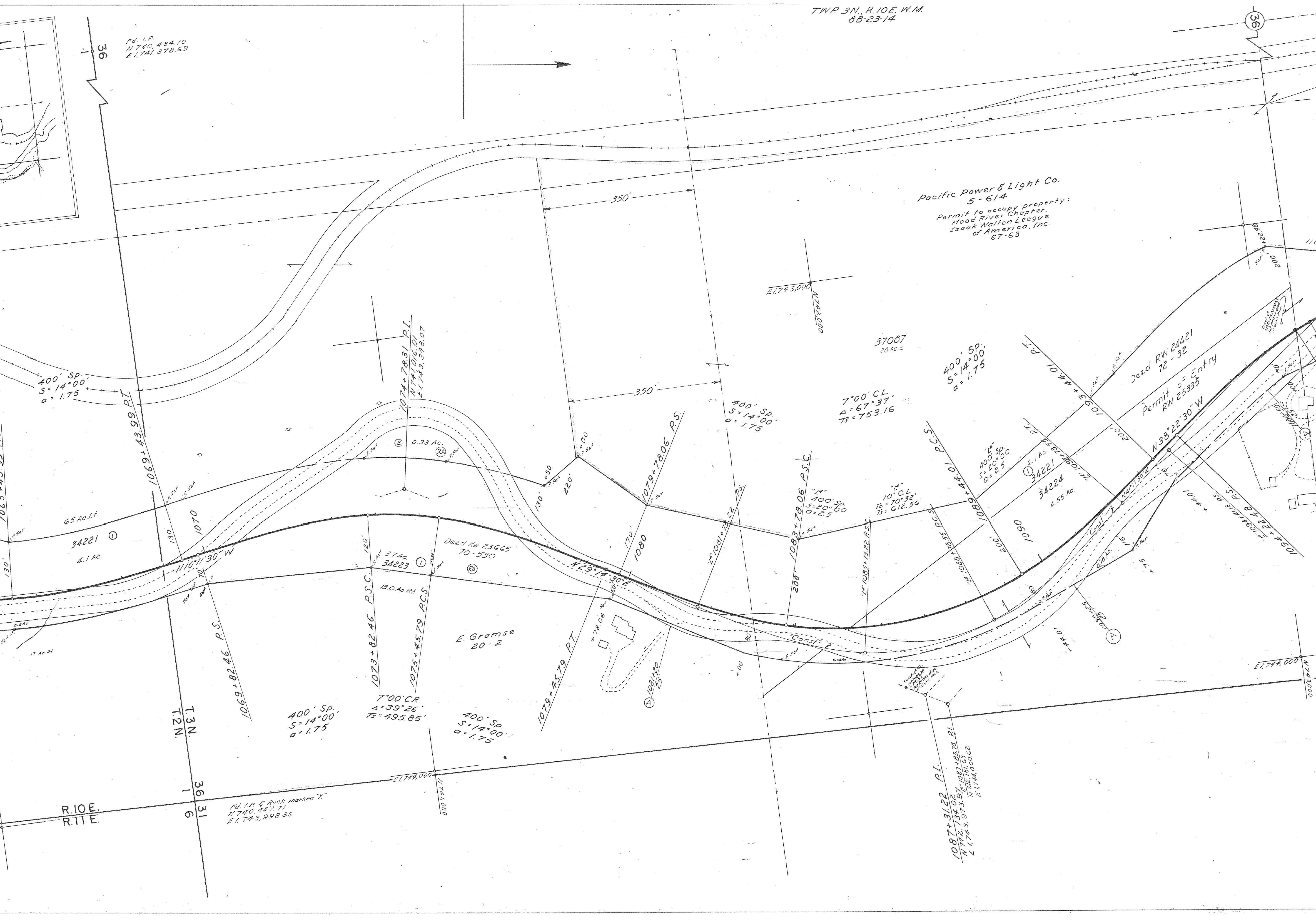
1064+08.31 P.I.  
N 739,904.01  
E 1,743,547.98

R.10E.  
R.11E.

Fd. I.P.  
N 737,808.63  
E 1,743,957.84

Fd. I.P.  
N 740, 434.10  
E 1,741, 378.69

Pacific Power & Light Co.  
5-614  
Permit to occupy property:  
Hood River Chapter,  
Hood River League  
Isaak Walton League  
of America, Inc.  
67-63



400' SP.  
S=14°00'  
a=1.75

400' SP.  
S=14°00'  
a=1.75

400' SP.  
S=14°00'  
a=1.75

7°00' CL.  
A=67°37'  
TS=753.16

400' SP.  
S=14°00'  
a=1.75

400' SP.  
S=14°00'  
a=1.75

T12N.  
T13N.

R. 10E.  
R. 11E.

Fd. I.P. & Rock marked "X"  
N 740, 447.71  
E 1,743, 998.35

1087+31.22 P.I.  
N 742, 134.02  
E 1,743, 973.37  
N 742, 191.63  
E 1,744, 000.62

34221  
4.1 Ac.

34223  
3.7 Ac.

34221  
6.1 Ac.

34224  
4.55 Ac.

E. Gramse  
20-2

37087  
28 Ac.

Dead RW 24421  
72-32

Permit of Entry  
RW 25335

Dead RW 23665  
70-530

1069+43.99 P.T.

1074+78.31 P.I.  
N 741, 016.01  
E 1,743, 348.07

1079+78.06 P.S.

1083+78.06 P.S.C.

1073+82.46 P.S.C.

1075+45.79 P.C.S.

1079+45.79 P.T.

1070

1080

1090

36 31  
6

E 1,744, 000  
N 743, 000



Pacific Power & Light  
5-614

HOOD RIVER

Pacific Power & Light Co.  
10-379

Abandoned To Abutting  
Owners RR 443

110 Ac. Lt.

Final Judg RW  
25335  
6.6 Ac.  
34224  
22 Ac. Rt.

8°00' CR  
A = 99°29'  
Ts = 1056.20'

R.M. & B.M. Downing  
30-229

400' SP.  
S = 16°00'  
a = 2.0

400' SP.  
S = 16°00'  
a = 2.0

400' SP.  
S = 18°00'  
a = 2.25

400' SP.  
S = 18°00'  
a = 2.25

9°00' CL  
A = 91°16'30"  
Ts = 860.96'

T.H. & R.H. Applegate  
62-606  
34229  
2.65 Ac.  
Deed RW 23945  
71-179

Hood River County  
28-11 No. 30  
34231  
0.83 Ac.  
(Tax Foreclosure)

J.E. & L.M. Plog  
37-200  
Deed RW 23779  
70-528  
34228  
3.0 Ac.

O.S.H.D.  
23-340

Fd. I.P.  
N 745.294.78  
E 1,744.408.35

Ann Clegg  
68-145

L.N. & Lila Miller  
47-407

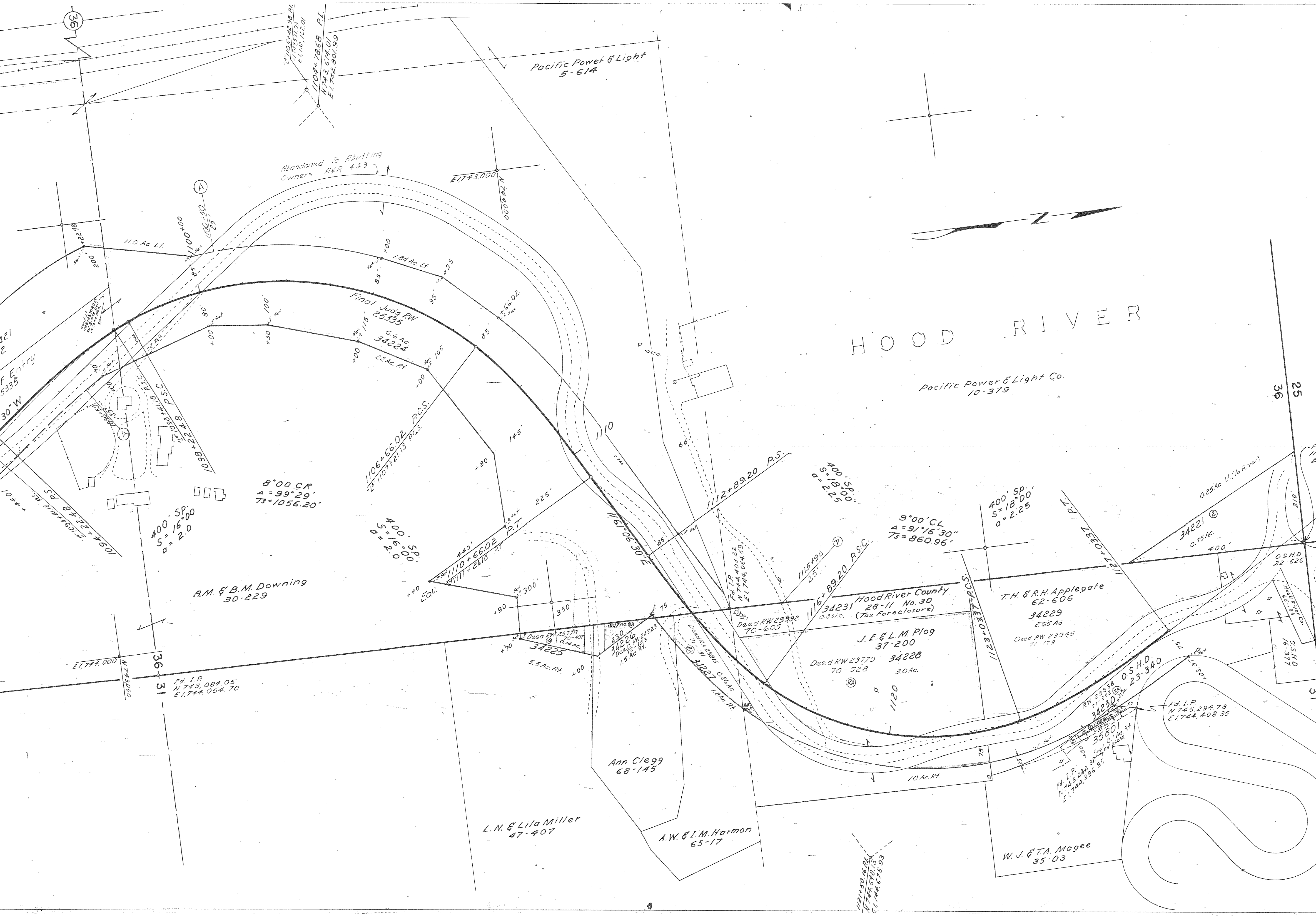
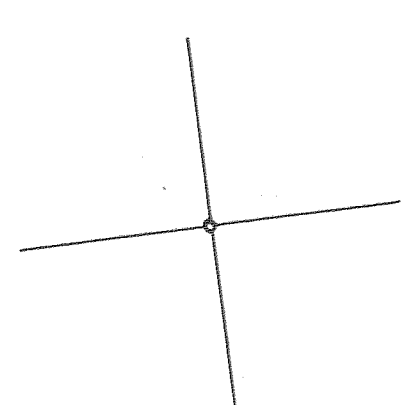
A.W. & L.M. Harmon  
65-17

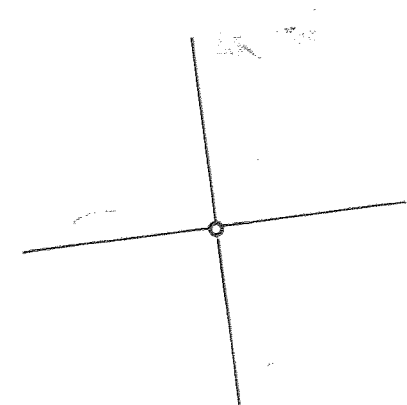
W.J. & T.A. Magee  
35-03

36

25

31





WHISKEY CREEK - HOOD RIVER SECTION  
MT. HOOD HIGHWAY  
SCALE: 1" = 100'  
DRG. NO. 8B-23-14

