

OREGON STATE HIGHWAY DEPARTMENT

Located Line

# WHISKEY CREEK - HOOD RIVER SECTION

MT. HOOD HIGHWAY

HOOD RIVER COUNTY

Scale: 1 inch = 100 feet

Traced by M.L.J.

Aug., 1961

GRID BEARINGS-NORTH ZONE

DRG. NO. 88-23-14

*Submitted to County 7-17-66*

See 88-22-13

See 88-22-13

Pacific Power & Light Co.  
10-403

U.S.A. Transmission Line 1 sec.  
78-718

Abandoned to Building  
Company  
88-443

Deed RW 14388

5'00" CP  
L=58'-15"9  
TS=757.35

Ref Webster Orchards, L  
44-510

FOR PRIOR RW ACQUISITION  
SEE 78-3-7

Fd. I.P.  
11737, 808 53  
E1742, 557 84

5'00" SP  
S=7'-30"  
a=0.5

3'00" CL  
L=40'-52"30"  
TS=993.58'

5'00" SP  
S=7'-30"  
a=0.5

4'50" SP  
S=13'-30"  
a=1/8

Deed RW 23729  
70-032  
106 AC  
34222

Deed RW 18501  
49-464

18810  
Deed RW 18622  
45-508

Fd. I.P.  
11737, 814 03  
E1742, 552 18  
Bert B. Curtis et al  
54-219

Fd. I.P.  
11737, 813 16  
E1742, 551 18

34237  
97 AC  
Agree RW 1121128

CREEK

WHISKEY

N 23° 05' 30" E

N 10° 57' 40" E

N 10° 57' 40" E

N 10° 57' 40" E

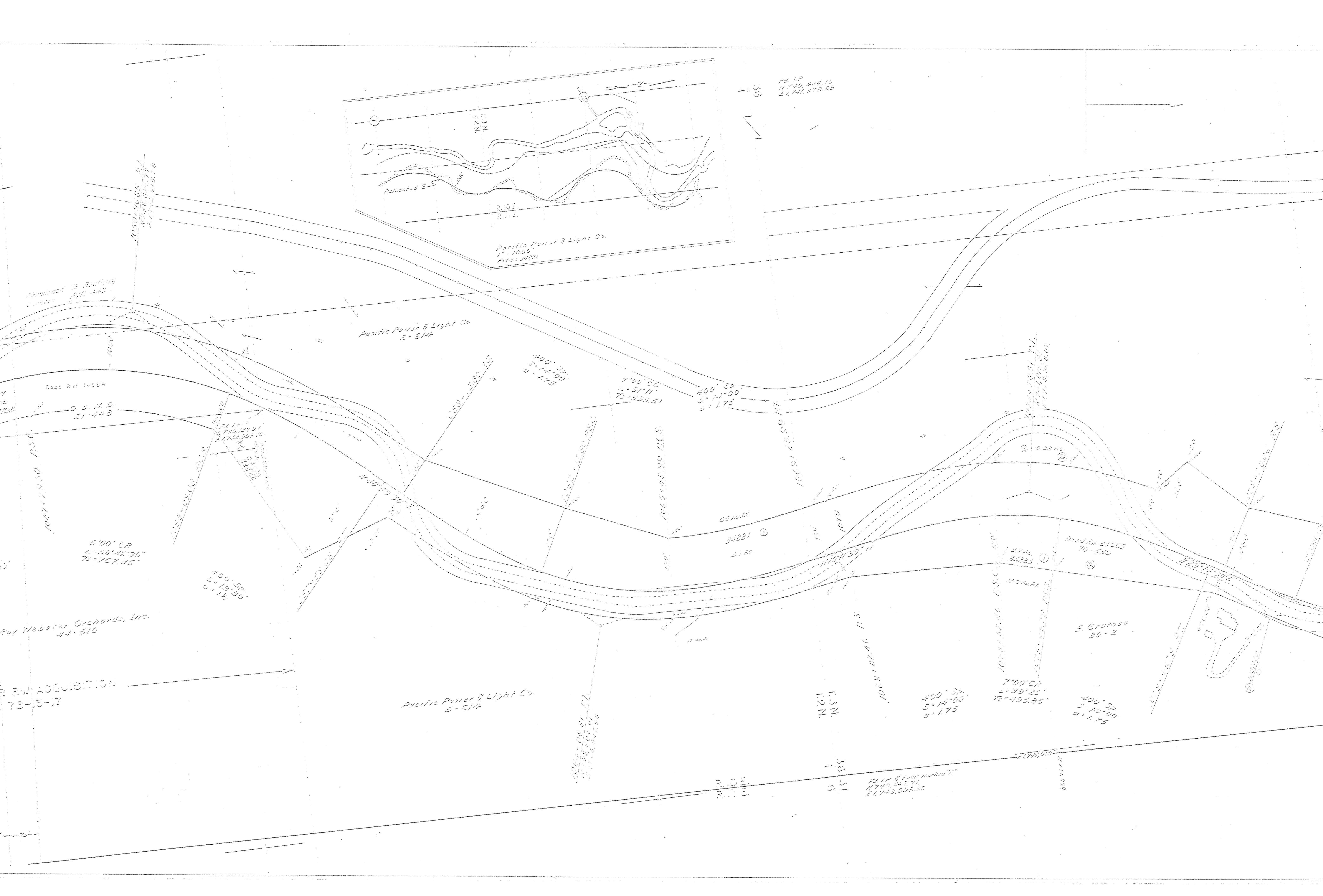
N 10° 57' 40" E

N 10° 57' 40" E

75° 75°

75° 75°





TWP 311, R. 10E, N. 11M.  
88-23-14

Pacific Power & Light  
5-514

Pacific Power & Light Co.  
5-514

Permit to occupy property:  
Hood River Chapter,  
Lunar Walton League,  
of America, Inc.  
57-53

57087  
Zone 2  
5055' 2" Release  
R/W 23855  
W.C. 7-55-514

Reopened to Starting  
Corners 847-443

Final July RW  
25555

A.M. & E.M. Downing  
30-229

Ann C1899  
53-145

L.N. & Lilla Miller  
47-407

A.M. & E.M. Harmon  
55-17

1087-5179 P.L.  
to 1087-5179  
to 1087-5179  
to 1087-5179  
to 1087-5179

P.L. I.P.  
11749, 054.05  
E1774.054.70

E1743.980

E1774.500

E1743.000

400' Sp.  
3-12'00"  
W = 175

7'00' CL  
2-57-37  
W = 153.15

400' Sp.  
3-20'00"  
W = 175

10' CL  
10-10'00"  
W = 125.00

8'00' CR  
2-39'20"  
W = 1055.20

400' Sp.  
3-15'00"  
W = 175

400' Sp.  
3-15'00"  
W = 175

400' Sp.  
3-15'00"  
W = 175

400' Sp.  
3-15'00"  
W = 175

400' Sp.  
3-15'00"  
W = 175

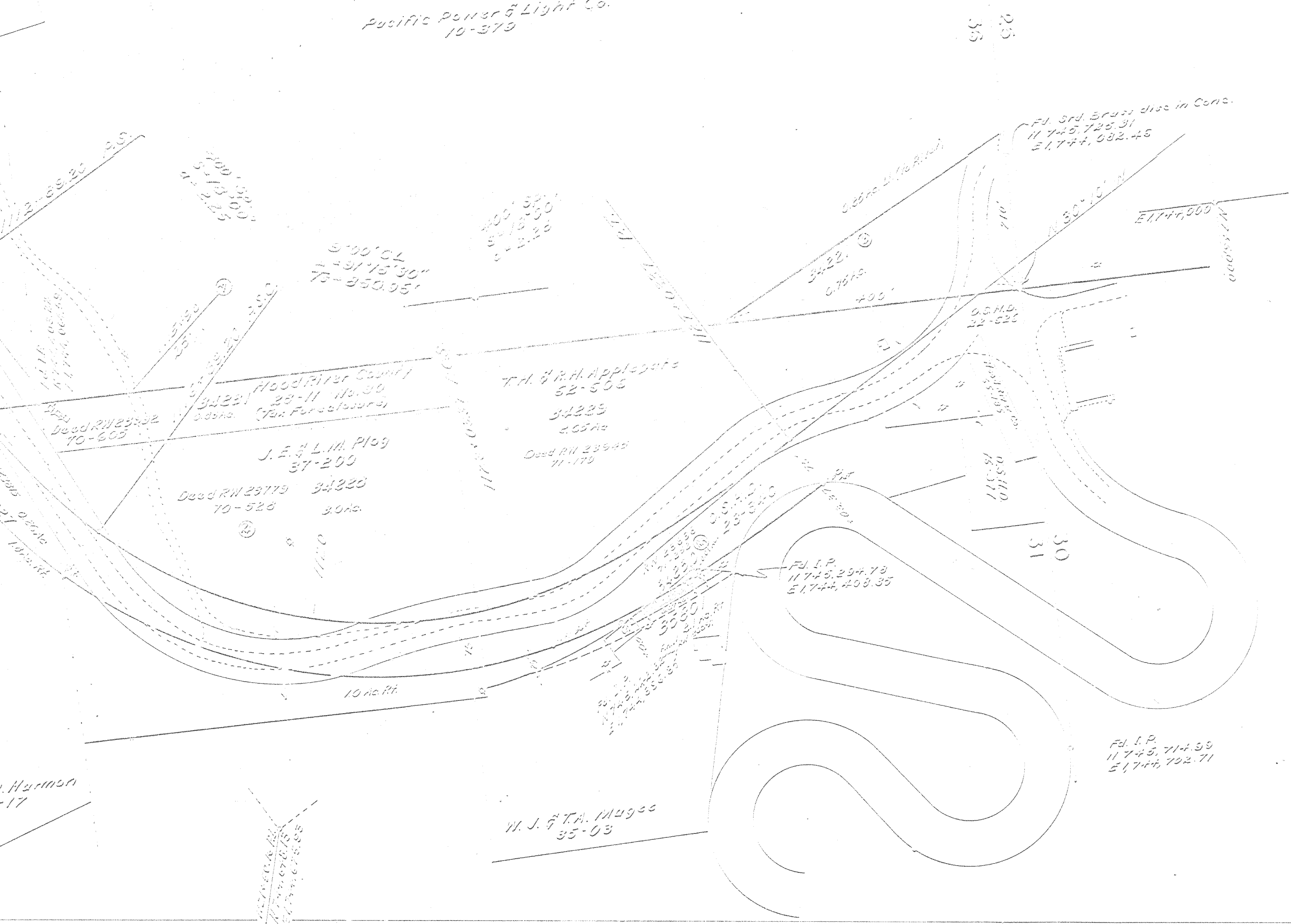
400' Sp.  
3-15'00"  
W = 175

400' Sp.  
3-15'00"  
W = 175

WHISKEY CREEK - HOOD  
MT. HOOD HIGHWAY  
SCALE: 1" = 100'  
DRG. NO. 8B-23-14

# HOOD RIVER

Pacific Power & Light Co.  
10-379



300' CL  
291°15'30"  
75-340.95'

Hood River County  
30221  
29-11-19-30  
(Per Forfeiture)

J. E. L. M. Plog  
37-200

Deed RN 23173  
70-528  
30 Ac.

T. H. & R. H. Applegate  
52-508

30225  
205 Ac  
Deed RN 23945  
71-179

Fd. I. P.  
11745.29+73  
51744.459.35

Fd. I. P.  
11745.71+39  
51744.702.71

W. J. G. T. A. Mudge  
35-03

Harmon  
-17

WHISKEY CREEK - HOOD RIVER SECTION

MT. HOOD HIGHWAY

SCALE: 1" = 100'

DRG. NO. 8B-23-14