

FIKES CORNER - WHISKEY CREEK SECTION

COVERED LINE

1-100

8B-SS-13

OREGON STATE HIGHWAY DEPARTMENT
Located Line

FIKES CORNER-WHISKEY CREEK SECTION

MT. HOOD HIGHWAY

HOOD RIVER COUNTY

Scale: 1 inch = 100 feet

Traced by M.L.J. May, 1961

GRID BEARINGS-NORTH ZONE

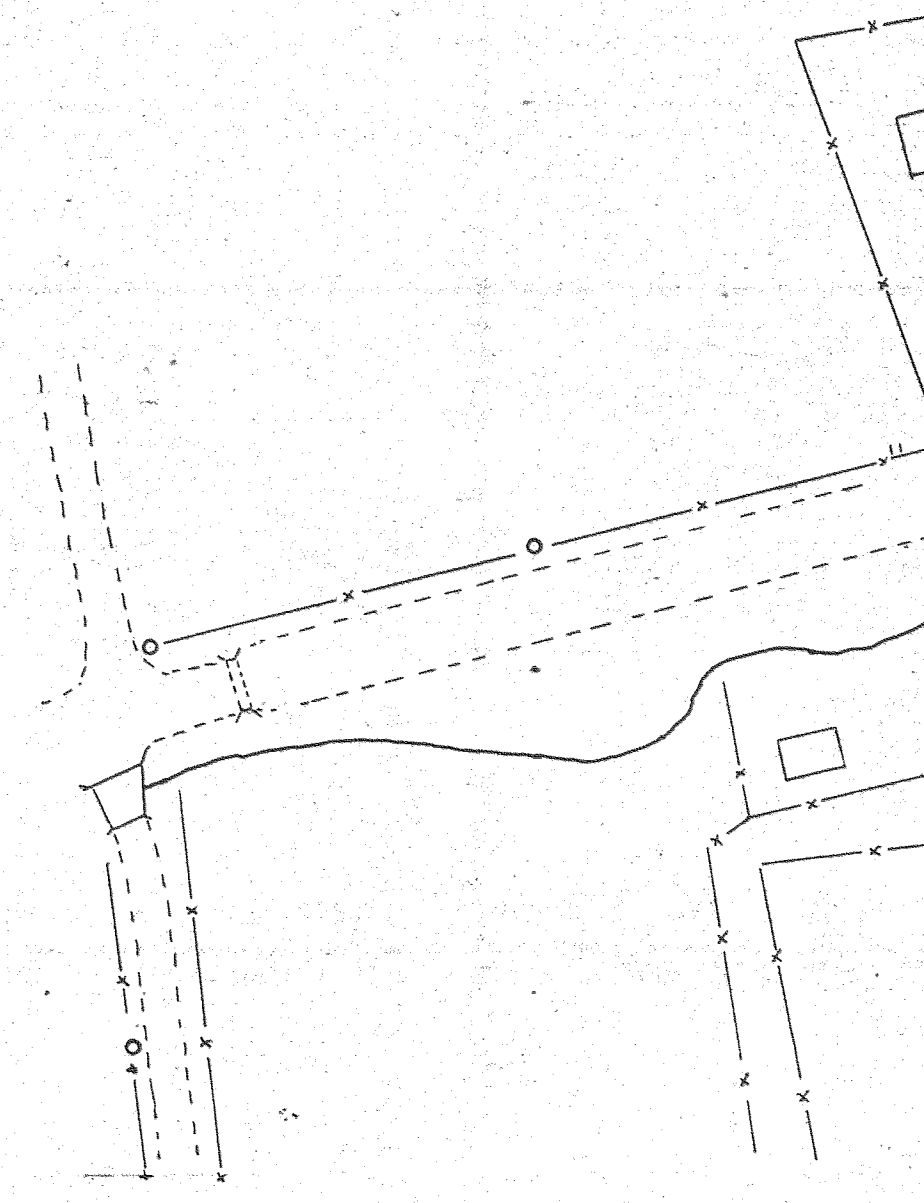
DRG. NO. 8B-22-13

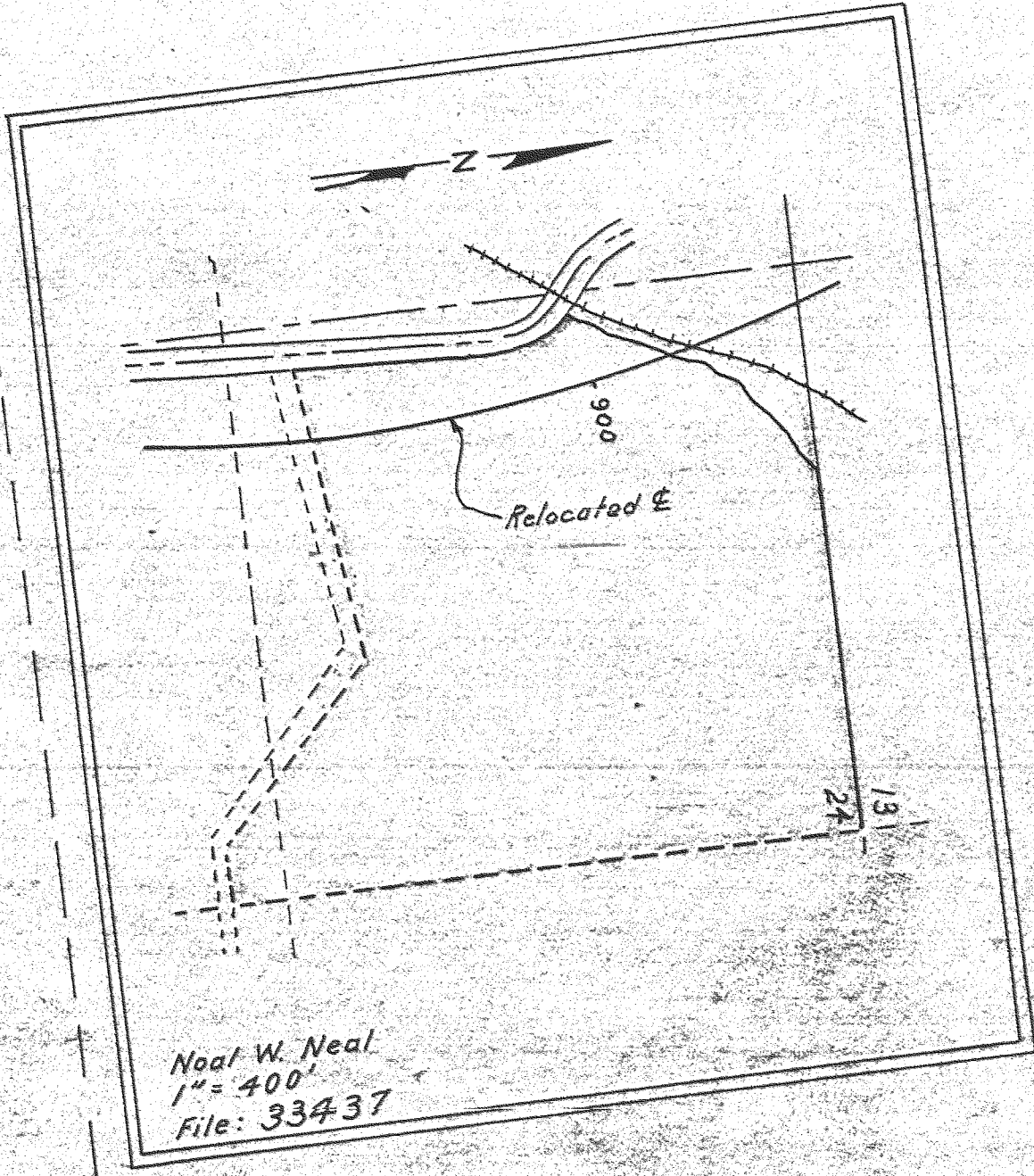
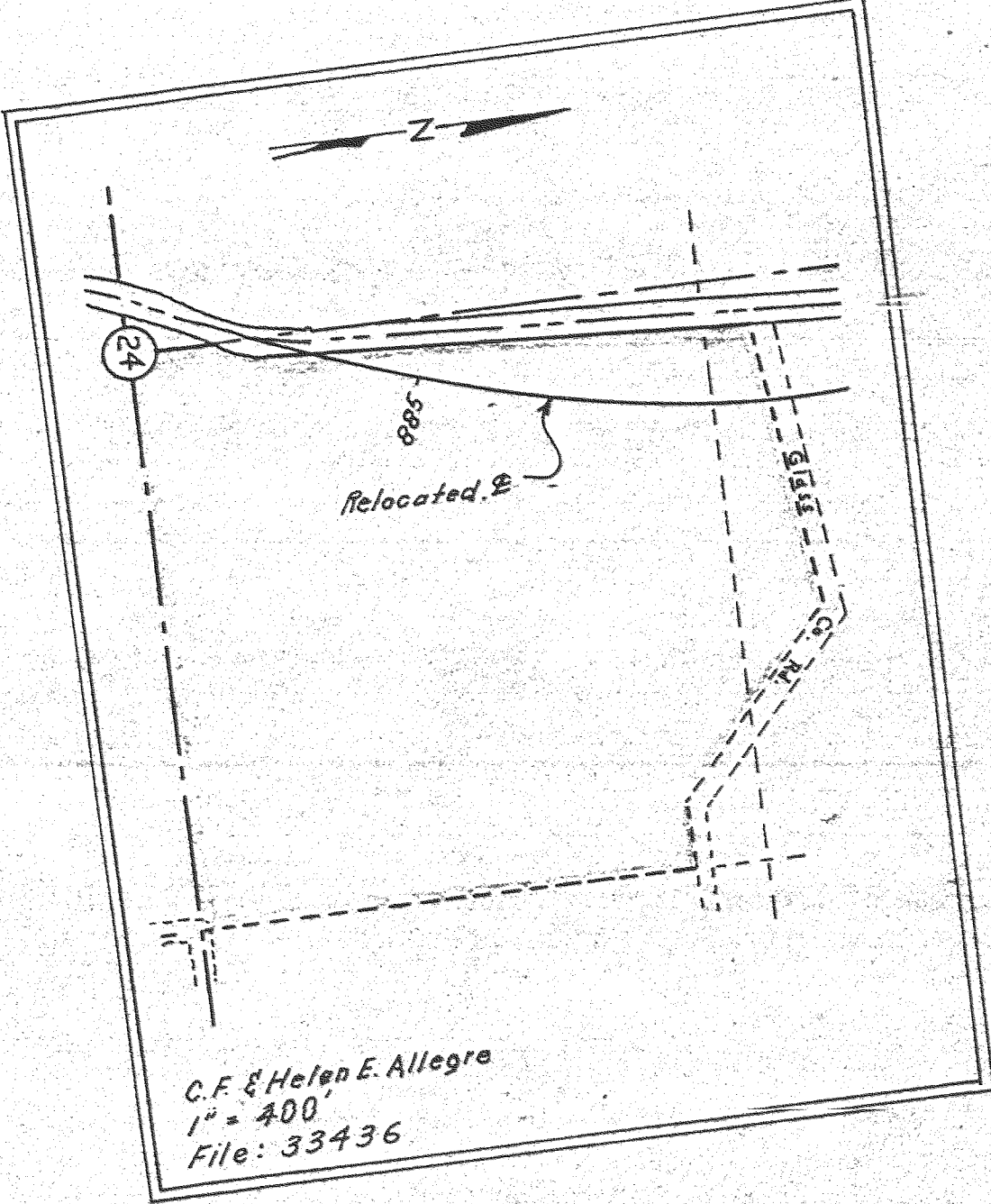
LEGEND

- (P) FARM CROSSING
- (A) ACCESS
- (PA) PRIVATE ACCESS
- (PL) PRIVATE ACCESS LIMITED
- (CA) COMMERCIAL ACCESS
- (CAL) COMMERCIAL ACCESS LIMITED
- (RA) RESTRICTED ACCESS

*Note: P.P. notations on RW line indicates
a RW pin & post has been set.*

Submitted to County 7-19-66





400' Sp.
S = 4° 00'
a = 0.5

2° CL
T₁ = 37° 03'
T₂ = 1160.69'

RE Olson
27-610

A. & R 394
Abandoned to County

Dead RW 23019
69-418

NEAL

CREEK

Lot 1

Lot 2

Lot 3

ROBERTS

SUBDIVISION

See 5B-11-8
FOR NEW ALIGNMENT
SEE 9B-2-12

Fd. 3" Axle
N 722, 005.83
E 1,741, 080.07

C.F. & Helen E. Allegre
40-101, 24-519, 66-580

33436 Dead RW 23412
70-137

892+42.12 P.L.
7723, 350.72
E. 1,741, 529.96

Glass Co. R.R.

899+34.53 P.C.S.

24

880+82.03 P.S.

884+82.03 P.S.

890

895

890

895

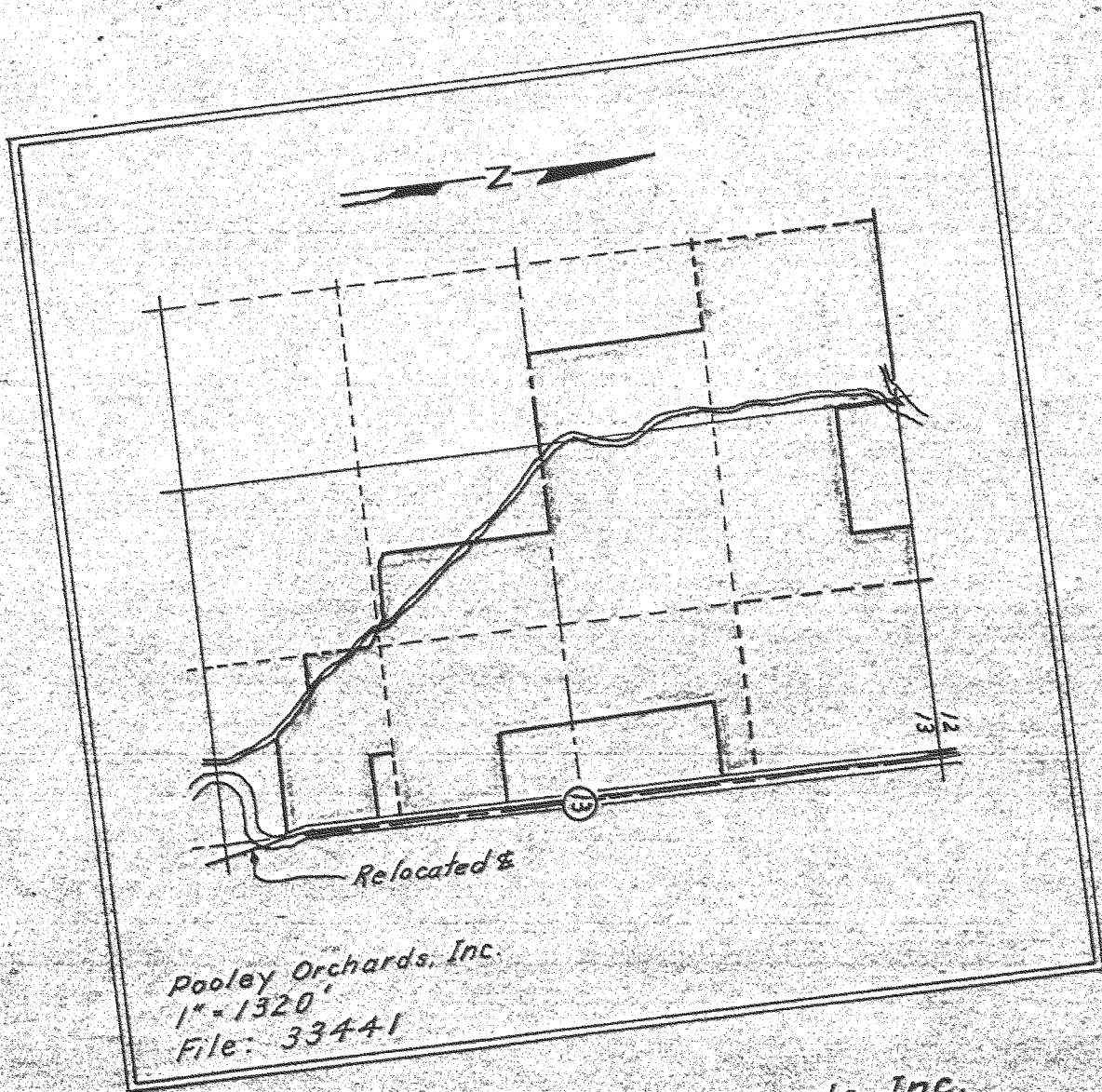
890

895

890

895

Fd. 3/4 I.P. 1/4 Cor.
N 724, 681.97
E. 1,739, 793.26



Poolley Orchards, Inc.
61-422

Poolley Orchards, Inc.
48-560

Kent & Ethel E. Shoemaker
29-510 & 17-376

William R. & Norma J. Bradley
59-188

Clifford A. & Fiko Todakuma
59-115

Floyd E. & James F. Baker
59-161

Pear & Apple Orchard
33441 (2)

Judgment 33445

33446

59-A-Rt

Orchard

400' Sp.
S = 4° 00'
a = 0.5

Fd. 1" I.P.
N 724, 443.11
E. 1,741, 120.64

Mt. Hood RR Co.
100' G-361

33438
Dead RW 23034
69-547
0.75 Ac.
Egal RR 23034 69-547

33439
Apple Orchard

33439 (2)

Young Pear Orchard

Vernon W. & Carol G. Pickling
52-435

33442
Pine Grove
Fire Dept.

33445

Apple Orchard

924+95
25'

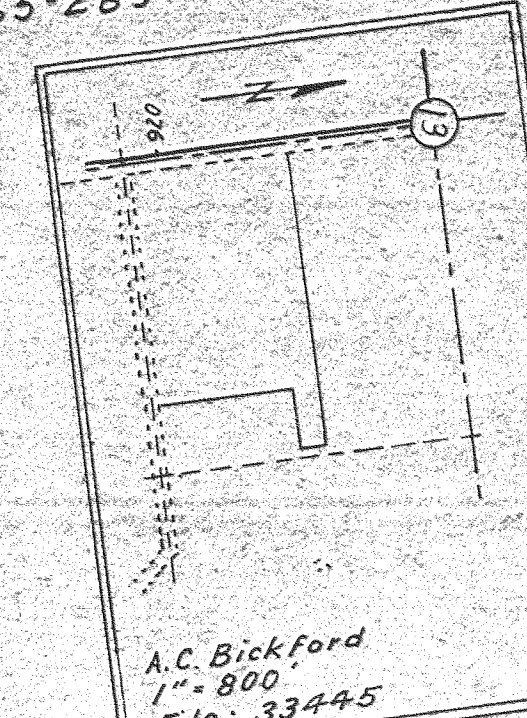
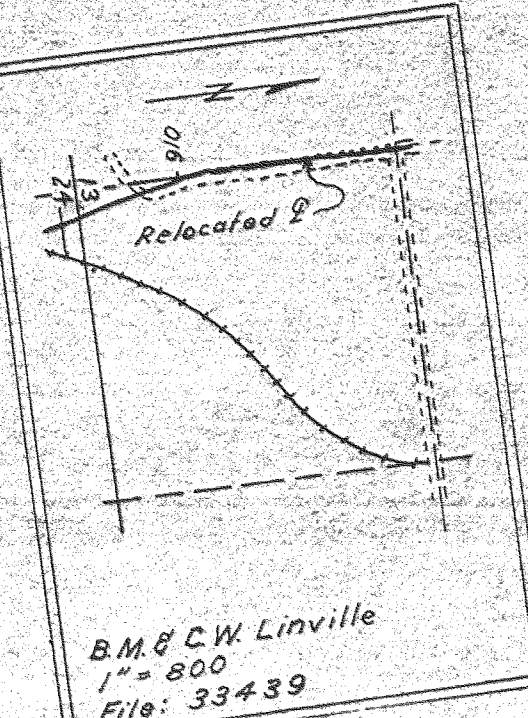
2° CL
T₀ = 14° 22' 30"
T₁ = 561.54

Blanche M. & Clyde W. Linville
50-53

400' Sp.
S = 4° 00'
a = 0.5

Arthur Clyde & Evelyn T. Bickford
65-269

Fd. RR Spike
N 725, 953.31
E. 1,742, 467.13



33437
Noel W. Neal
64-156
Lease of Materials Only

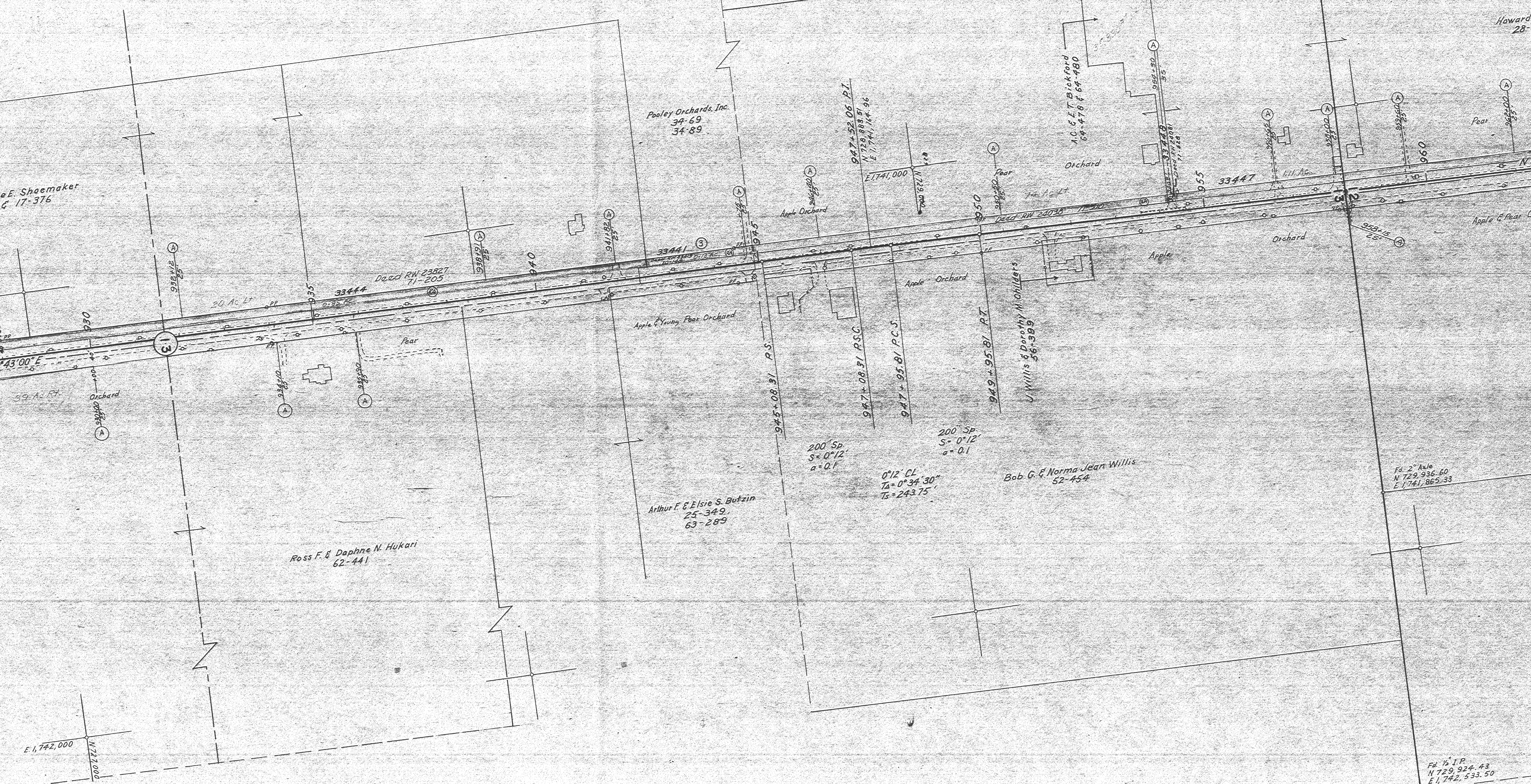
Lot 4

Lot 5 N 1° 10' E

E. 1,742,000
N 727,000

DIVISION

T2N, R10E, W.M
8B-22-13



E. Shaemaker
17-376

Pooley Orchards, Inc.
34-69
34-89

A.C. & T. Bickford
64-478 & 64-480

Howard
28

Dead RW 23827
71-205

947+52.06 P.T.
N 72° 88' 31" 96
E 1741.167 96

E 1741.000
N 72° 88' 31" 96

949+95.81 P.T.

Bob G. & Norma Jean Willis
56-999

Fd. 2" Axle
N 72° 936.60
E 1741.865.33

Ross F. & Daphne N. Hukari
62-441

Arthur F. & Elsie S. Butzin
25-349
63-289

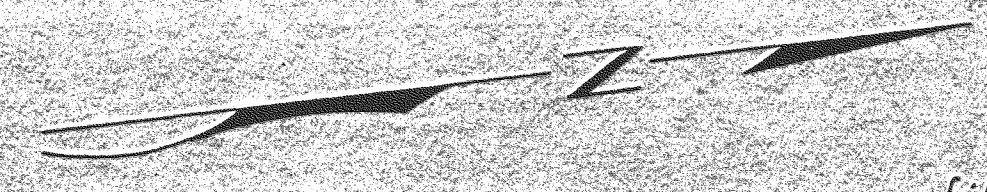
200 Sp
S = 0° 12'
a = 0.1

0° 12' CL
T_A = 0° 34' 30"
T_S = 243.75'

200 Sp
S = 0° 12'
a = 0.1

E 1742.000
N 722.000

Fd. 1/2" I.P.
N 72° 924.43
E 1742.533.50



Howard L. & Viola Shoemaker
28-598 & 46-545

C. Parmelee
19-227

Leon W. & Myrtle Age
63-566

Clyde A. Wicklund
54-324

982+48.00 P.I.
N 732, 370.56
E 1,741, 443.77

960
962+00
965+00

E 1,741,000
N 731,000

970+39.49
970+50.00
970+55.00

974+00
974+00

975
975+00
975+00

975+68.41

980
980+00
980+00

980+68.41 P.S.C.

985
985+00
985+00

990
990+00
990+00

400 Sp
S 7° 24'
a = 0.3

Pear Orchard

Apple Orchard

Apple Trees

Apple Trees

Apple Trees

Final Judg. RW 25534
17 Ac. Rt.

Deed RW 24470
12-481
334-55

Apple & Pear Orchard

Rear Apple Trees

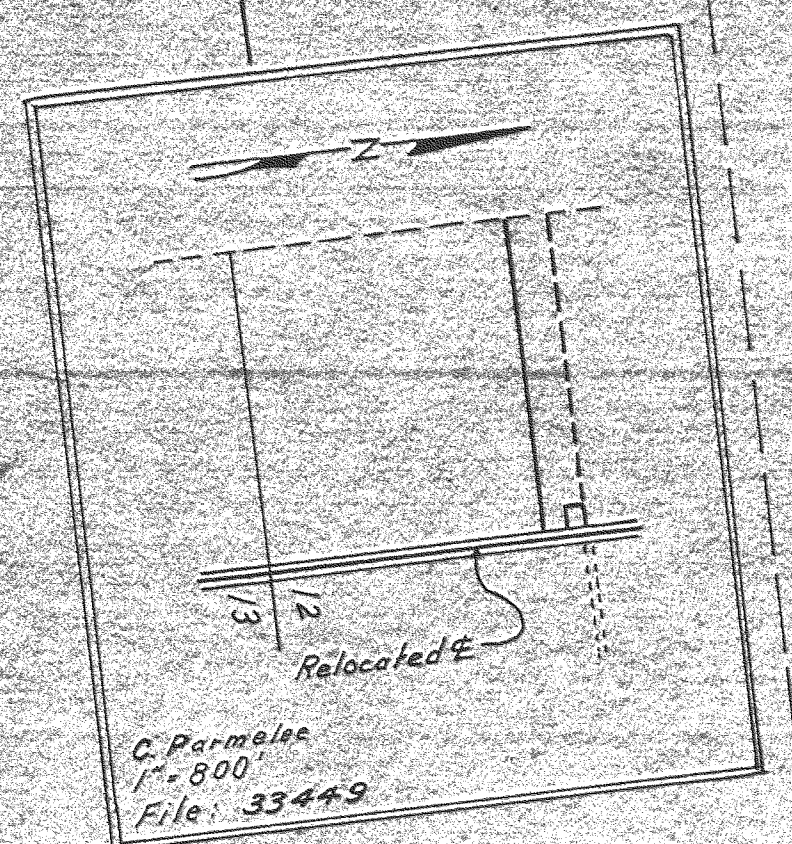
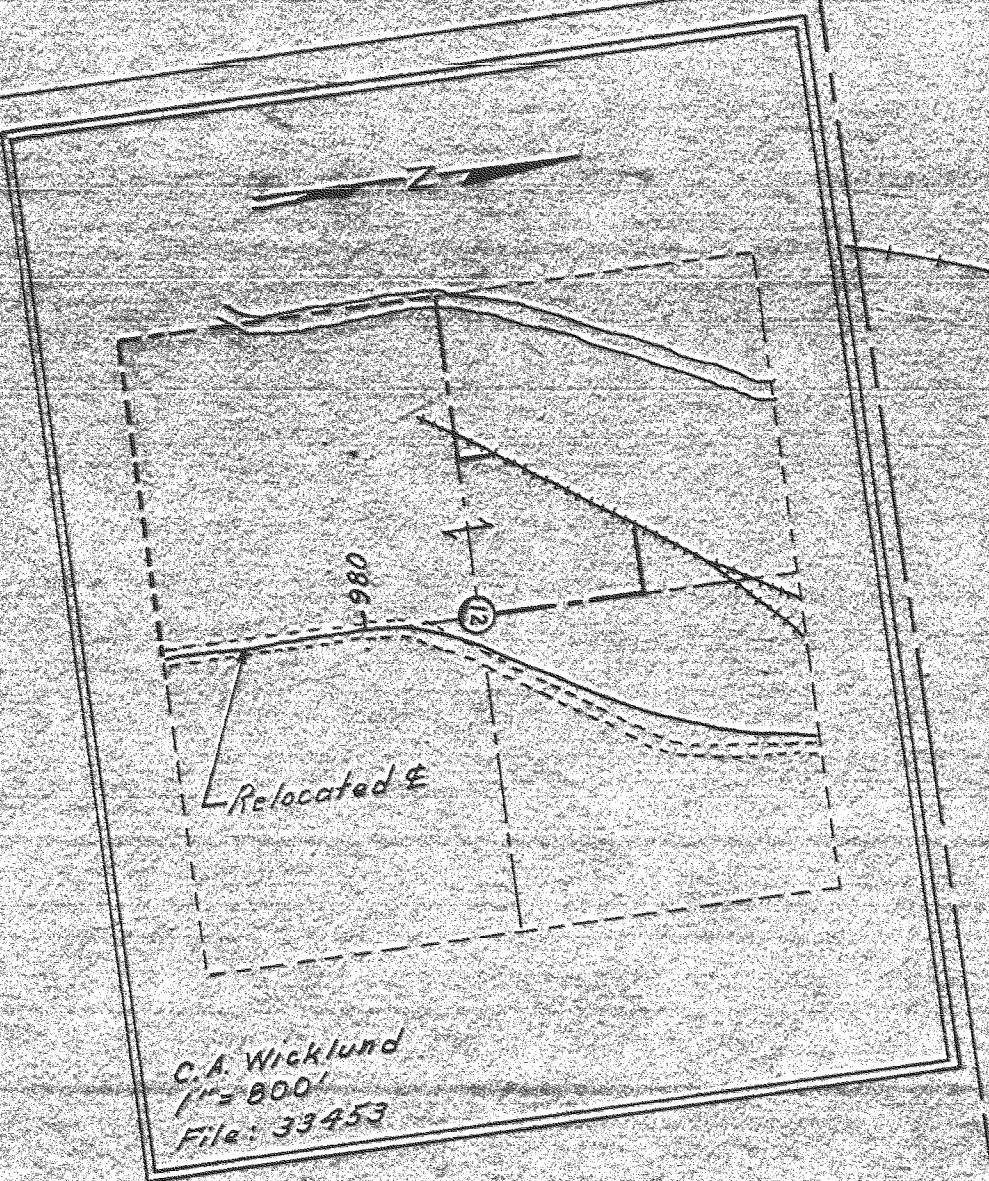
Abandoned to Abutting Owners
A & R 394

Joseph A. & Ester M. Parks
39-358

See IR-4-222
For RR Crossing On
Paasch Bridge
Section

Richard E. & Betty Ann Hutson
64-10
55-32

500 Sp
S 7° 30'
a = 0.6



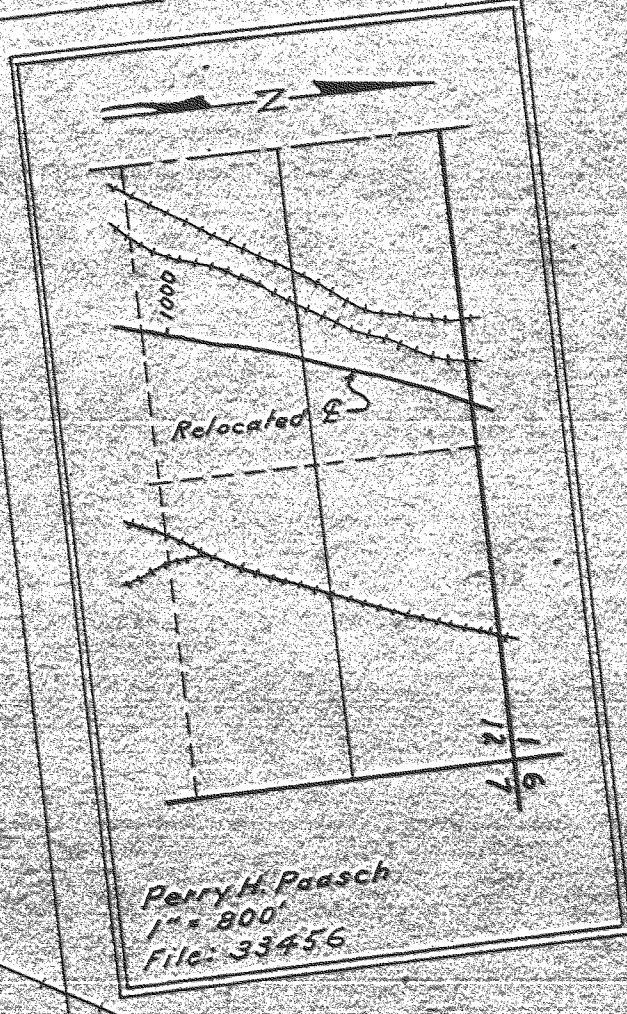
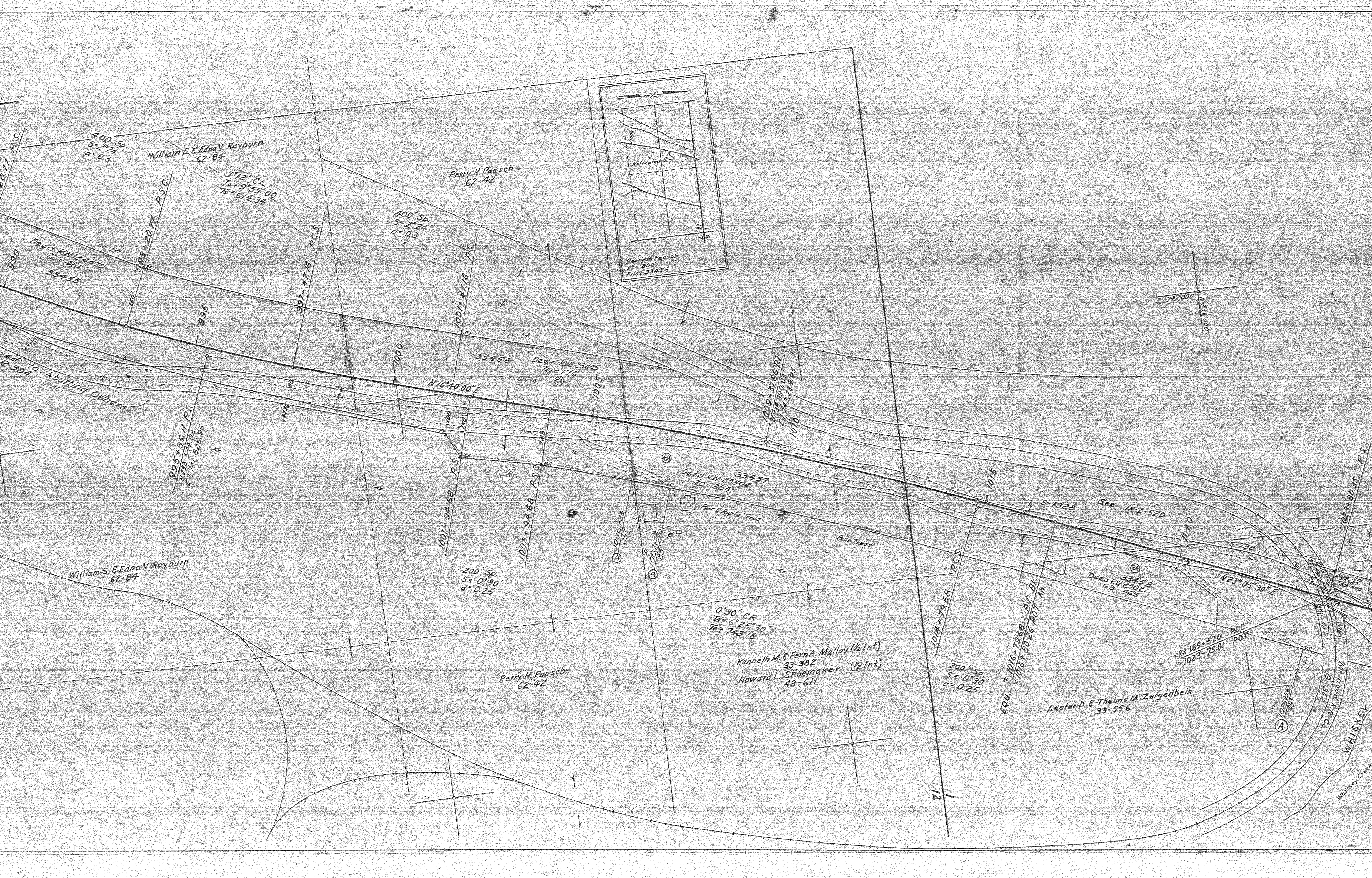
Fd. 2" Axle
N 729, 936.60
E 1,741, 865.33

Fd. 1/2" J.P.
N 729, 924.43
E 1,742, 533.50

Fd. 8"x9" Stone
N 731, 229.15
E 1,742, 549.14

Fd. 1" Stone Marked "4"
N 732, 522.10
E 1,743, 876.25

William S. & Edna
62-84



400' Sp
S = 7° 24'
a = 0.3

William S. & Edna V. Rayburn
62-84

1 1/2" CR
TA = 9° 55' 00"
TS = 6' 14.34'

Perry H. Paasch
62-42

400' Sp
S = 7° 24'
a = 0.3

Deed RW 24470
72-481
33455

993 + 20.77 P.S.C.

997 + 47.16 P.C.S.

1001 + 47.16 P.T.

995

1000

33456 Deed RW 23445
70-176
2. Ac. L4.
8.3 Ac.

N 16° 40' 00" E

1001

1009 + 37.86 P.T.
N 73° 49' 00" W
S = 742.2893
1010

995 + 35.11 P.T.
N 73° 52' 02"
S = 741.02698

1001 + 94.68 P.S.

1003 + 94.68 P.S.C.

33457 Deed RW 23504
70-254
Part of Apple Trees
74.16 P.T.
Part Trees

William S. & Edna V. Rayburn
62-84

200' Sp
S = 0° 30'
a = 0.25

0° 30' CR
TA = 6° 25' 30"
TS = 743.18

Perry H. Paasch
62-42

Kenneth M. & Fern A. Malloy (1/2 Int)
33-382
Howard L. Shoemaker (1/2 Int)
43-611

200' Sp
S = 0° 30'
a = 0.25

EQU = 1016.7968 P.T. Bk.
1016 + 80.26 P.O.T. 1H.

Lester D. & Thelma M. Zeigenbein
33-556

RR 185 + 570 P.O.C.
= 1023 + 73.01 P.O.T.

33458 Deed RW 23021
69-465

N 23° 05' 30" E

WHISKEY
Whiskey Creek

E 1742.000
N 136.000

1023 + 80.35 P.S.

1020

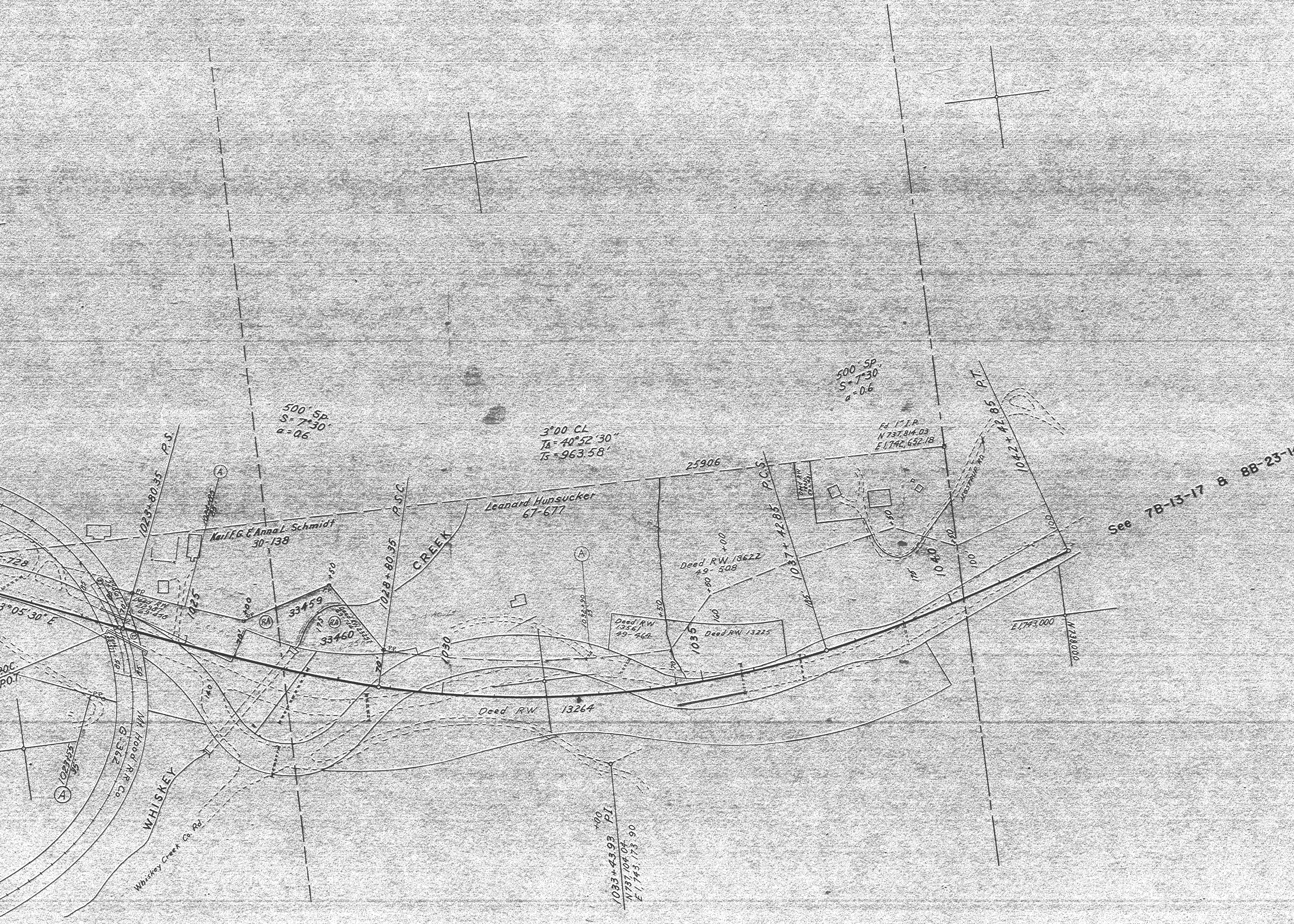
1015

S 1328 See IR-1-520

S 728

1014 + 79.68 P.C.S.

12



FIKES CORNER - WHISKEY CREEK SECT.
 MT. HOOD HIGHWAY
 HOOD RIVER COUNTY
 Scale: 1 inch = 100 feet
 8B-22-13

See 7B-13-17 & 8B-23-14