

FIKES CORNER - WHISKEY CREEK SECT.

MT. HOOD HIGHWAY

LOCATED LINE

1"=100'

8B-SS-13

Can. Sec 24 2010E → Whiskey Creek

HWY. 35 1961
Loc. Line

OREGON STATE HIGHWAY DEPARTMENT

Located Line

FIKES CORNER - WHISKEY CREEK SECTION

MT. HOOD HIGHWAY

HOOD RIVER COUNTY

Scale: 1 inch = 100 feet

Traced by M.L.J.

May, 1961

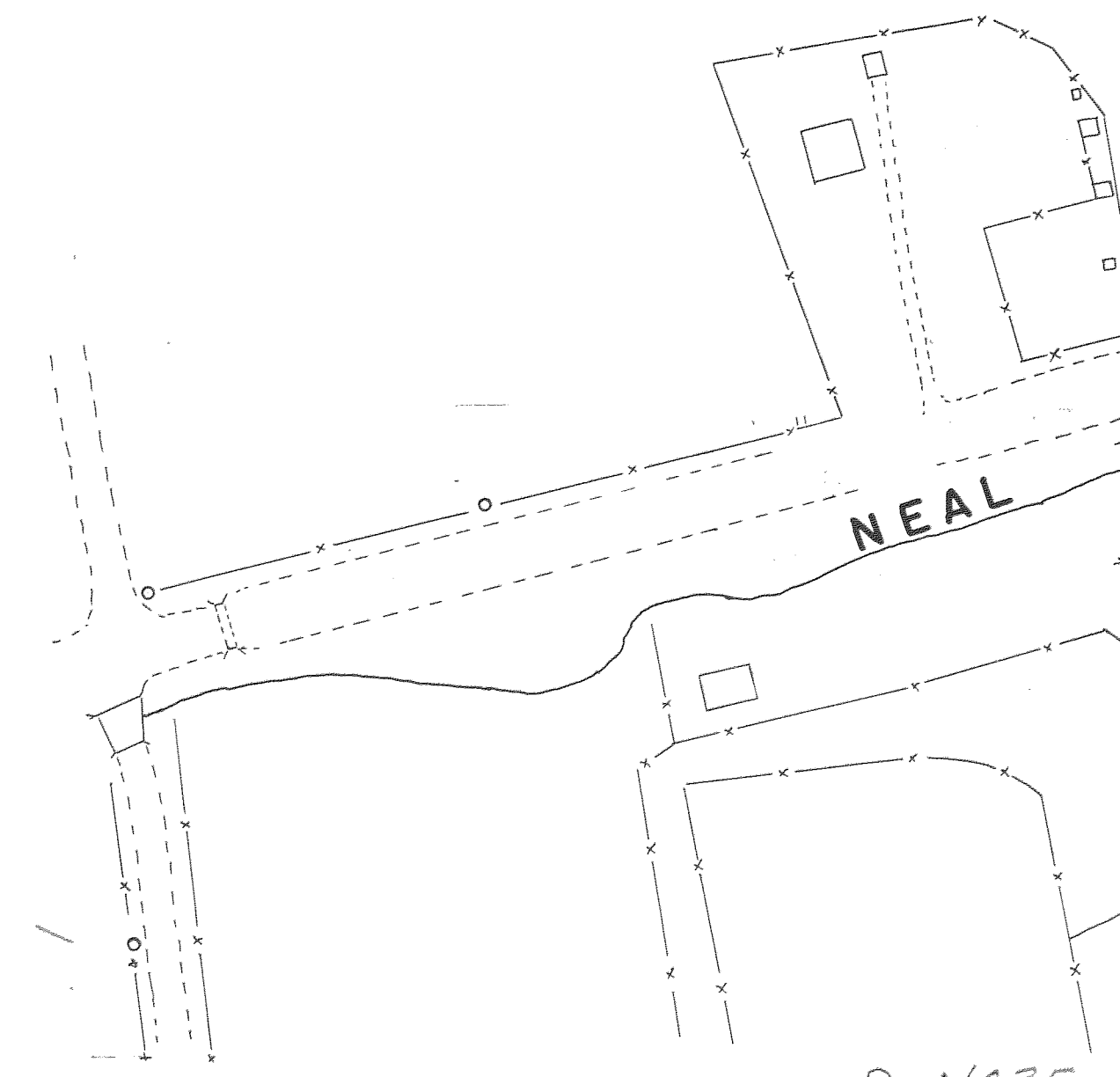
GRID BEARINGS-NORTH ZONE

DRG. NO. 8B-22-13

LEGEND

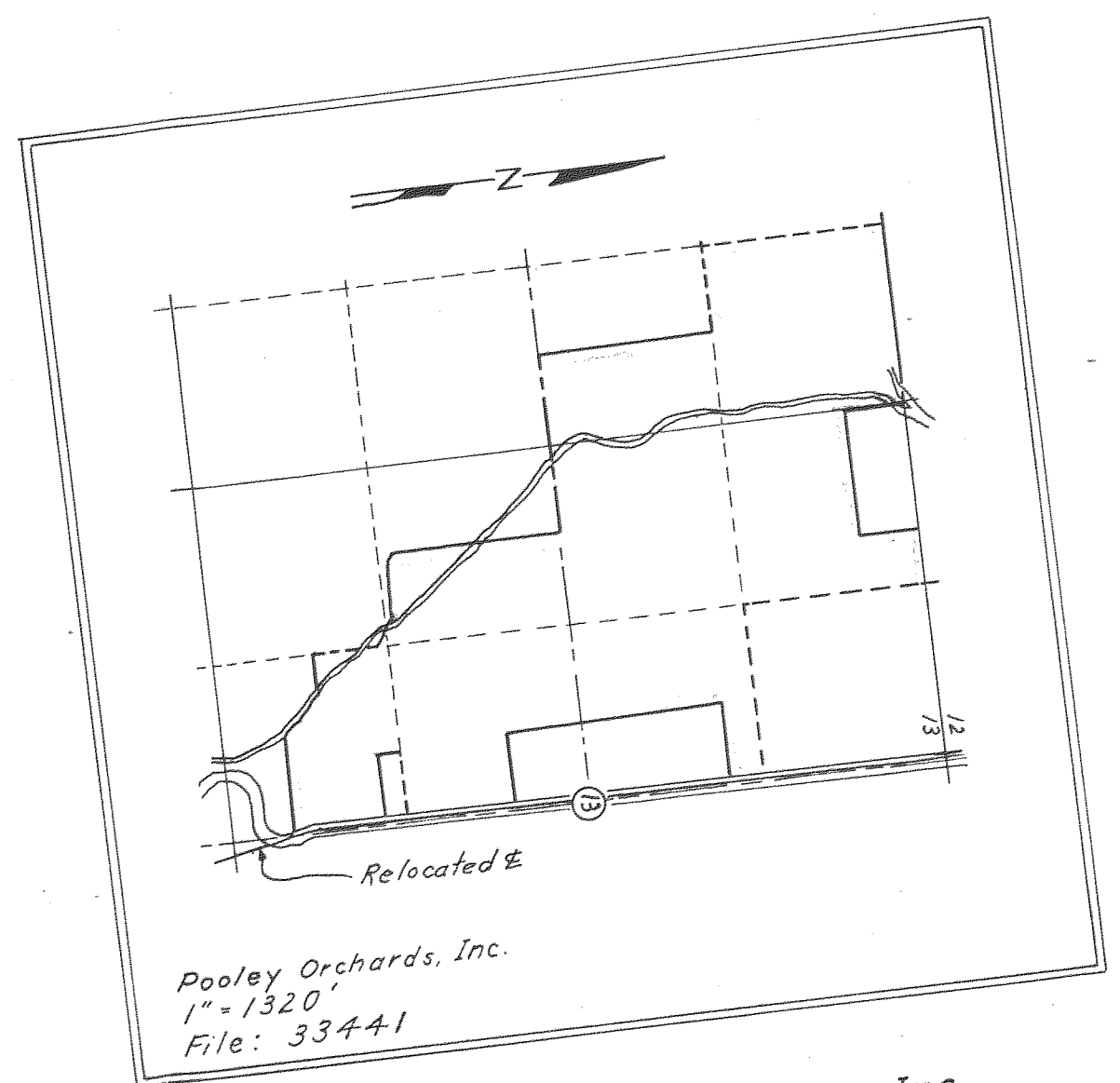
- (F) FARM CROSSING
- (A) ACCESS
- (P) PRIVATE ACCESS
- (PL) PRIVATE ACCESS LIMITED
- (CA) COMMERCIAL ACCESS
- (CL) COMMERCIAL ACCESS LIMITED
- (RA) RESTRICTED ACCESS

Note: RR notations on RW line indicates a RW pin & post has been set.



D-N635-

Fd. 3/4" I.P. 1/4 Cor.
N 724, 681.97
E 1,739, 793.26



Pooley Orchards, Inc.
61-422

Pooley Orchards, Inc.
48-560

Kent & Effie E. Shoemaker
29-510 & 17-376

Abandoned to
County
William R. & Norma J. Bradley
59-188

Clifford A. & Eiko Todakuma
59-115

Floyd E. & James F. Baker
59-161

Mt Hood R.R. Co.
G-361

Fd. 1" I.P.
N 724, 663.11
E 1,741, 120.64

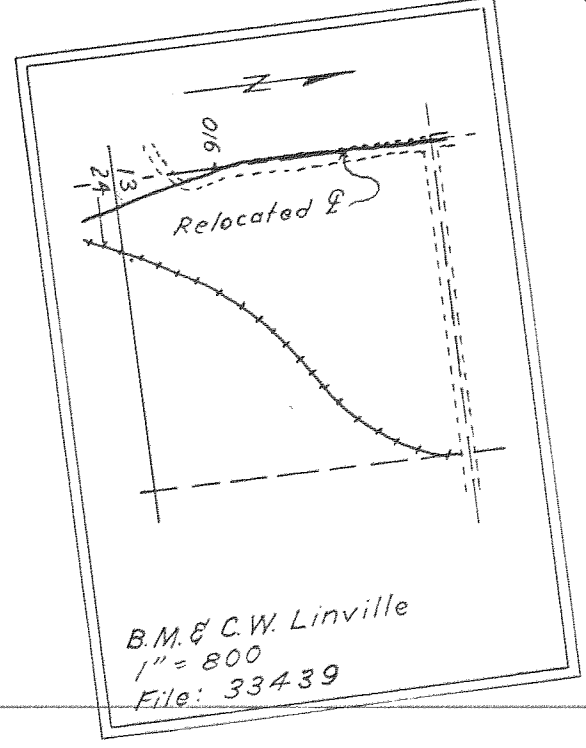
Deed RW 23094
69-547

907+61.20 P.C.S.

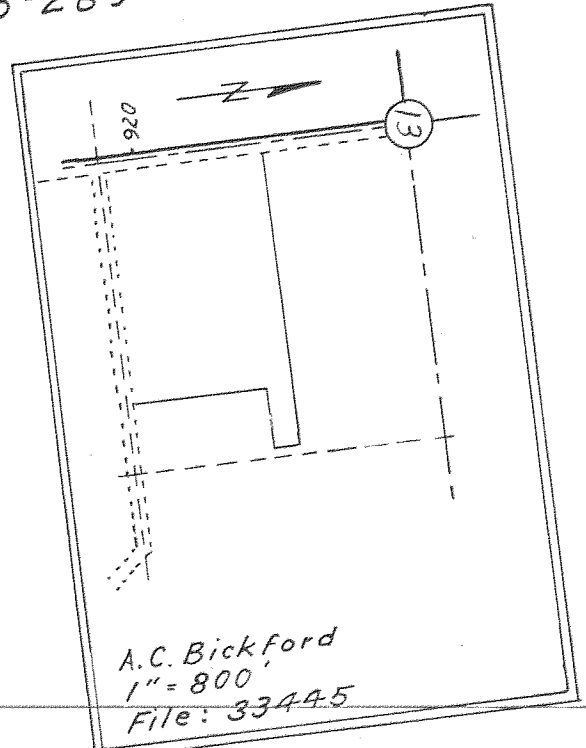
910+79.95 P.C.S.

400' Sp.
S = 4°00'
a = 0.5

Blanche M. & Clyde W. Linville
50-53



Arthur Clyde & Evelyn T. Bickford
65-269



Fd. R.R. Spike
N 725, 953.31
E 1,742, 467.13

E 1,742,000
N 727,000

Lot 4

Lot 5 N. 1° 10' E

Noel W. Neal
64-156

33437
Lease of Materials Only

400' Sp.
S = 4°00'
a = 0.5

400' Sp.
S = 4°00'
a = 0.5

2° CL
T₂ = 14° 22' 30"
T₅ = 561.54'

Young Pear Orchard

Vernon W. & Carol G. Picking
52-435

Pine Grove
Fire Dept.

Apple Orchard

Rear & Apple Orchard

Apple Orchard

Apple Orchard

Ross F. & Daphne
62-441

932+12
25'

930

926+60
25'

909+25

920

915

910

910

909

906

906

906

906



Poolley Orchards, Inc.
34-69
34-89

A.C. & E.T. Bickford
64-478 & 64-480

Howard L. & Viola Shoemaker
28-598 & 46-545

945+08.31 P.S.

947+08.31 P.S.C.

947+95.81 P.C.S.

949+95.81 P.T.

J. Willis & Dorothy M. Childers
56-399

Bob G. & Norma Jean Willis
52-454

Joseph A. & Ester M. Parks
39-358

Ross F. & Daphne N. Hukari
62-441

Arthur F. & Elsie S. Butzin
25-349
63-289

200' Sp.
S = 0°12'
a = 0.1

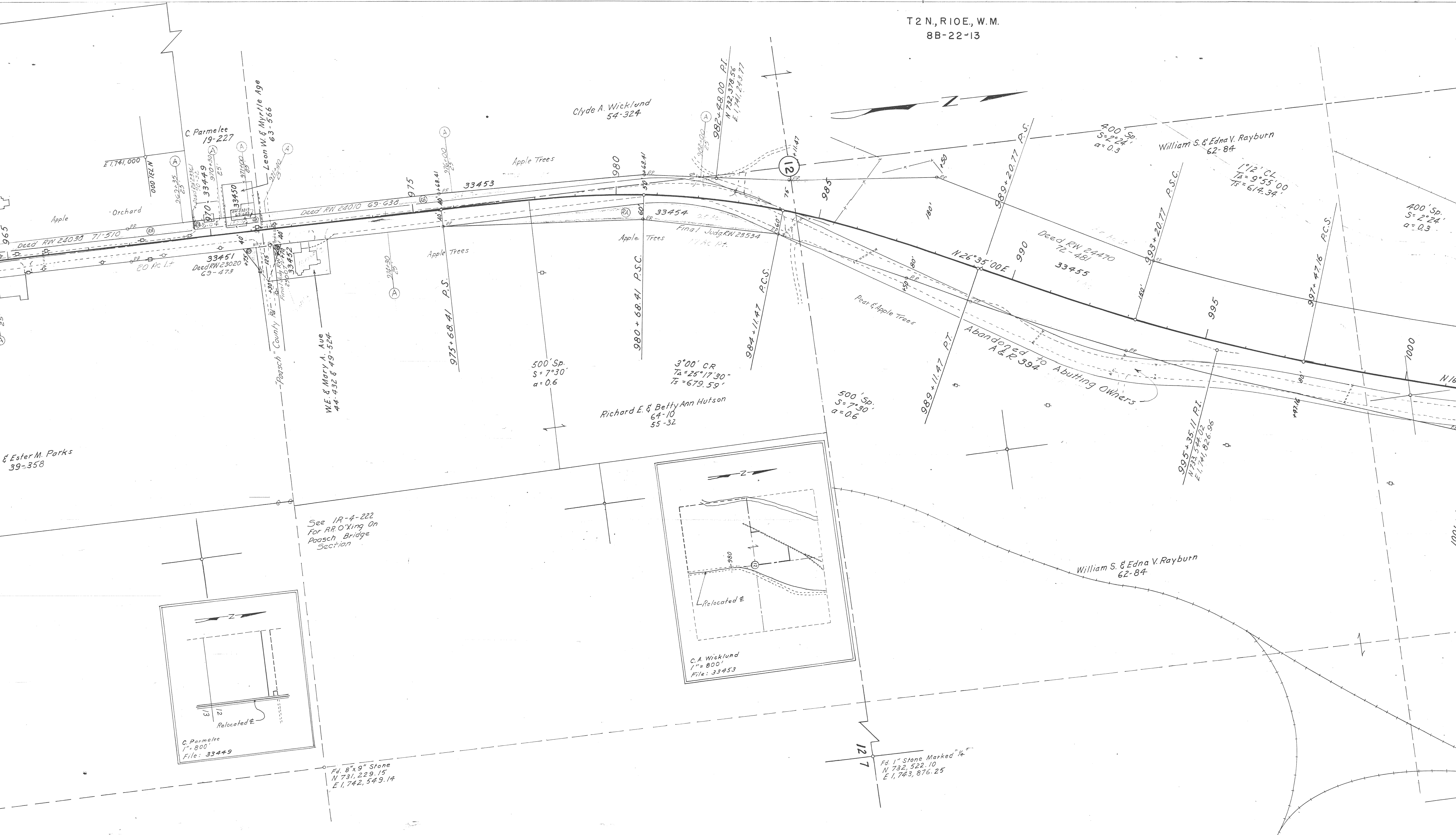
0°12' CL
T_a = 0°34'30"
T_s = 243.75'

200' Sp.
S = 0°12'
a = 0.1

Fd. 2" Axle
N 729,936.60
E 1,741,865.33

Fd. 1/2 I.P.
N 729,924.43
E 1,742,533.50

T2N, R10E, W.M.
8B-22-13



Clyde A. Wicklund
54-324

C. Parmelee
19-227

Leon W. & Myrtle Age
63-566

William S. & Edna V. Rayburn
62-84

Richard E. & Betty Ann Hutson
64-10
55-32

William S. & Edna V. Rayburn
62-84

C. Parmelee
1" = 800'
File: 33449

Fd. 8" x 9" Stone
N 731, 229.15
E 1,742, 549.14

Fd. 1" Stone Marked 1/4
N 732, 522.10
E 1,743, 876.25

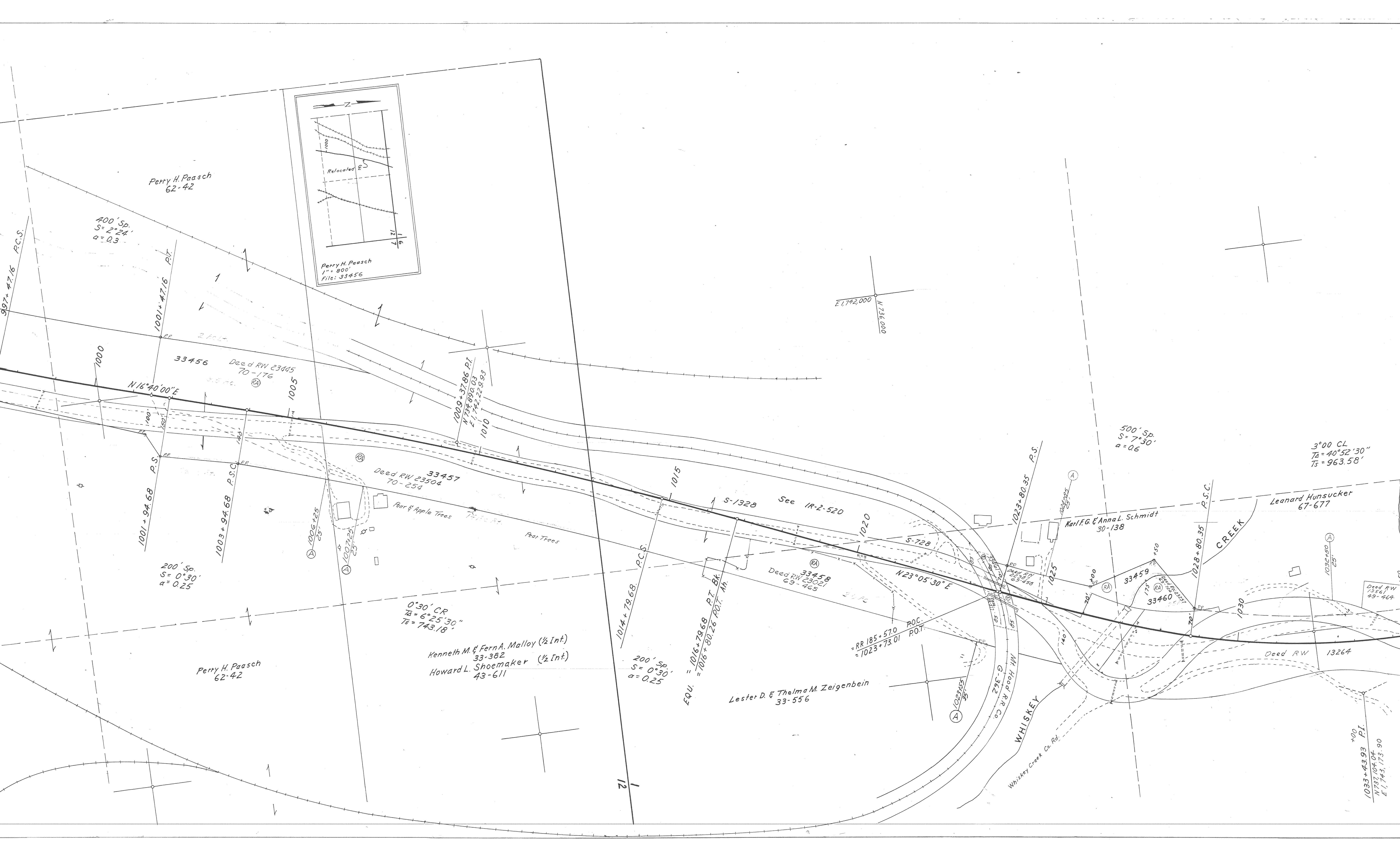
See IR-4-222
For RR Crossing On
Paosch Bridge
Section

C.A. Wicklund
1" = 800'
File: 33453

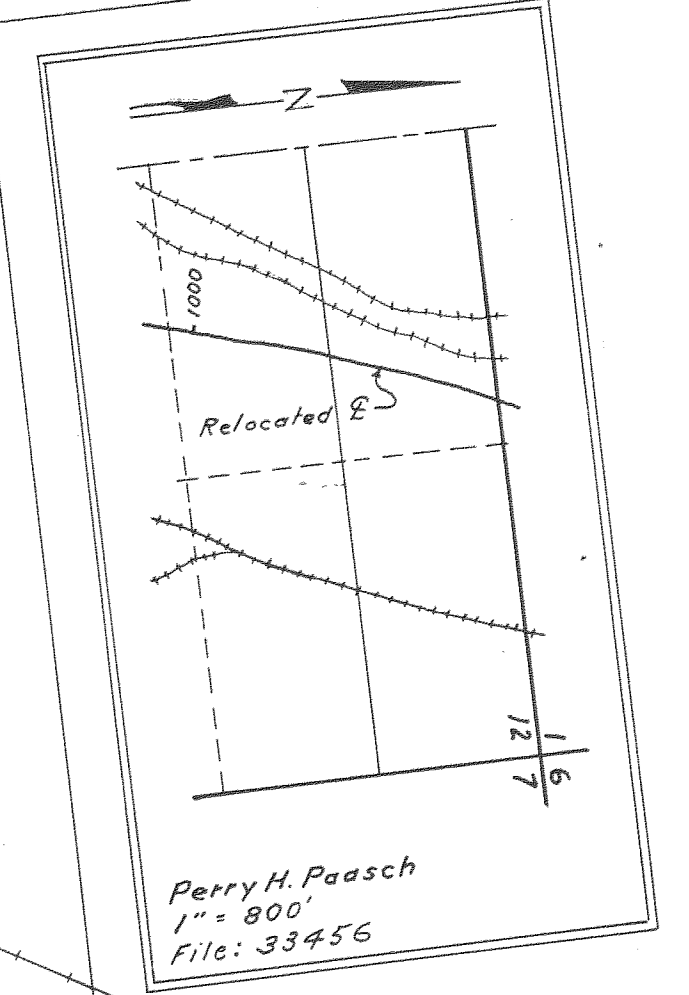
Abandoned to
Abutting Owners
A & R 394

Relocated E

Relocated E



Perry H. Paasch
62-42



400' Sp.
S = 2°24'
a = 0.3

1001+47.16 P.T.

33456 Deed RW 23445
70-176

1009+37.86 P.T.
N 73° 00' 00" E
E 1742.22 8.93

1001+94.68 P.S.

1003+94.68 P.S.C.

200' Sp.
S = 0°30'
a = 0.25

Deed RW 33457
70-254

0°30' CR
TA = 6°25'30"
TS = 743.18'

Kenneth M. & Fern A. Malloy (1/2 Int.)
33-382
Howard L. Shoemaker (1/2 Int.)
43-611

Perry H. Paasch
62-42

200' Sp.
S = 0°30'
a = 0.25

Equ. = $\frac{1016+79.68}{1016+80.26}$ P.T. Bk.
POT. Ah.

Lester D. & Thelma M. Zeigenbein
33-556

Deed RW 33458
69-465

RR 185+57.0
= 1023+73.01

500' Sp.
S = 7°30'
a = 0.6

3°00' CL
TA = 40°52'30"
TS = 963.58'

Leonard Hunsucker
67-677

Karl F.G. & Anna L. Schmidt
30-138

33459
33460

Deed RW
13561
49-464

Deed RW 13264

1033+43.93 P.I.
N 73° 104' 04"
E 1743.173.90

1/2

WHISKEY
Whiskey Creek Co. Rd.

MH Hood R.R. Co.
G-362

CREEK

1033+80.35 P.S.

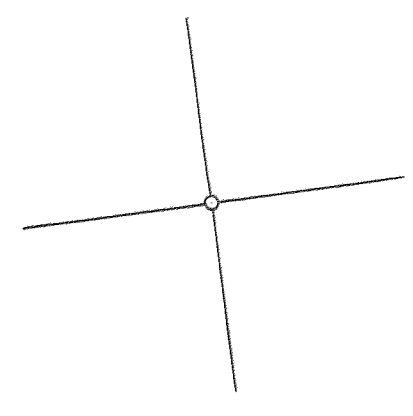
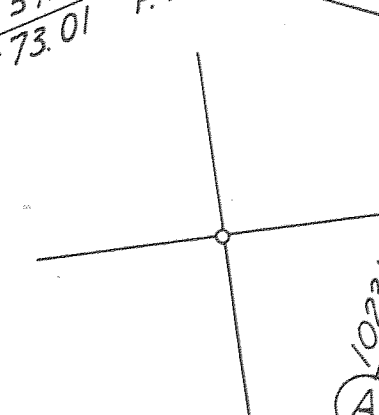
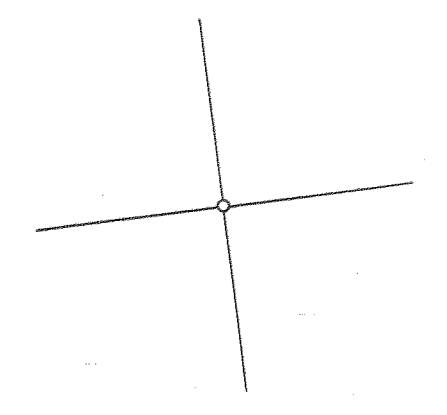
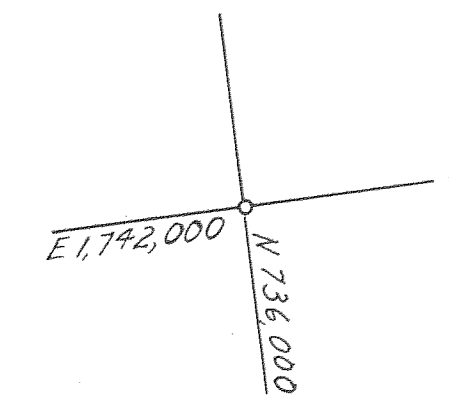
1028+80.35 P.S.C.

1028+30.25

1030

1030

+00





See 7B-13-17 & 8B-23-14

FIKES CORNER-WHISKEY CREEK SECT.
 MT. HOOD HIGHWAY
 HOOD RIVER COUNTY
 Scale: 1 inch = 100 feet
 8B-22-13