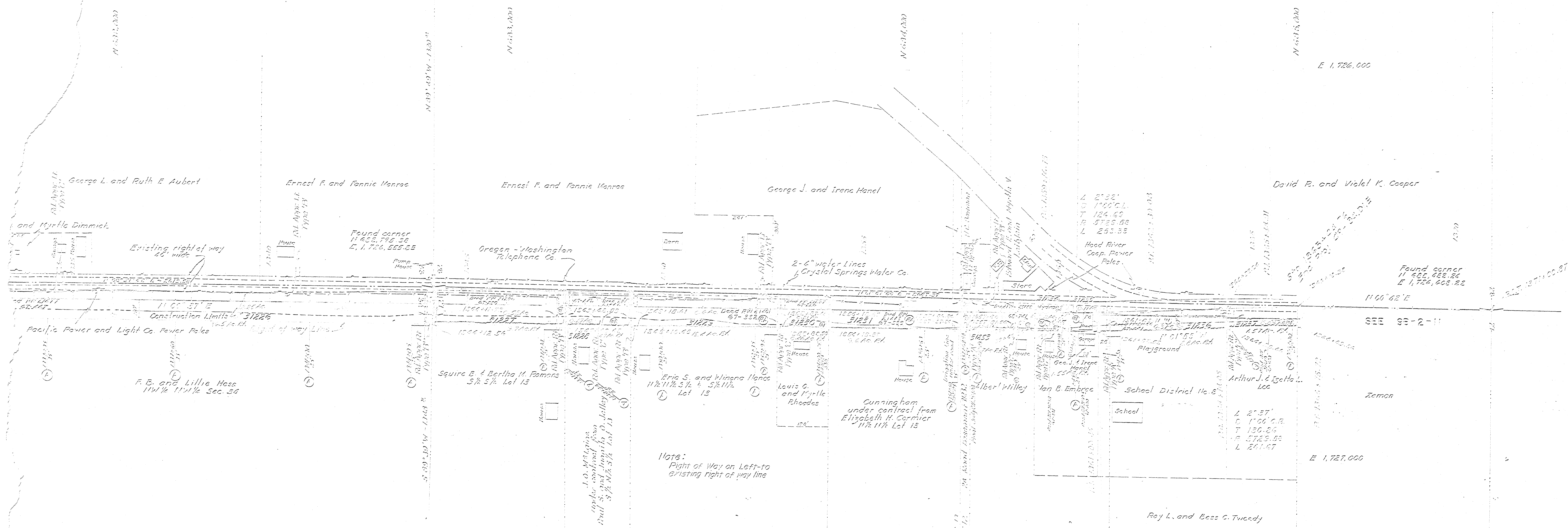


8B-17-13
N. 210 E. 1/4 Sec. 36
HOOD RIVER COUNTY

Department of Commerce
Bureau of Public Roads
Region No. 8
RIGHT OF WAY PLAT
H.A. Hood Highway
Parkdale Section
Oregon Forest Highway Project
49-B4, D1, E
8B-17-13



Notes:
Right of Way on Left to
Existing Right of Way line

SEE 98-2-11

8B-17-13
100'-0" = 1" = 100'
100'-0" = 1" = 100'
100'-0" = 1" = 100'
100'-0" = 1" = 100'