

POLALLIE CREEK PARKDALE ROAD SECTION

MOUNT HOOD HIGHWAY

HOOD RIVER COUNTY

Scale: 1 inch = 100 feet

MAY 1958
Rev. MAY 1981

PRELIMINARY
SUBJECT TO CHANGE

PRELIMINARY
SUBJECT TO CHANGE

PART 2 OF 2 PARTS

DRG. NO. 8B-9-21

LEGEND

- FARM CROSSING
- ACCESS
- ROAD CROSSING
- RAILROAD
- UTILITY
- PROPERTY LINE
- ADJACENT PROPERTY
- ADJACENT ROAD
- ADJACENT CREEK

Mt. Hood Meadows Oregon, Ltd.
F 67-48

SE 1/4 SW 1/4 Section 20
Sterling Havel, Fred G. Swenson
JOHN D. GRAY
79-33

MOUNT

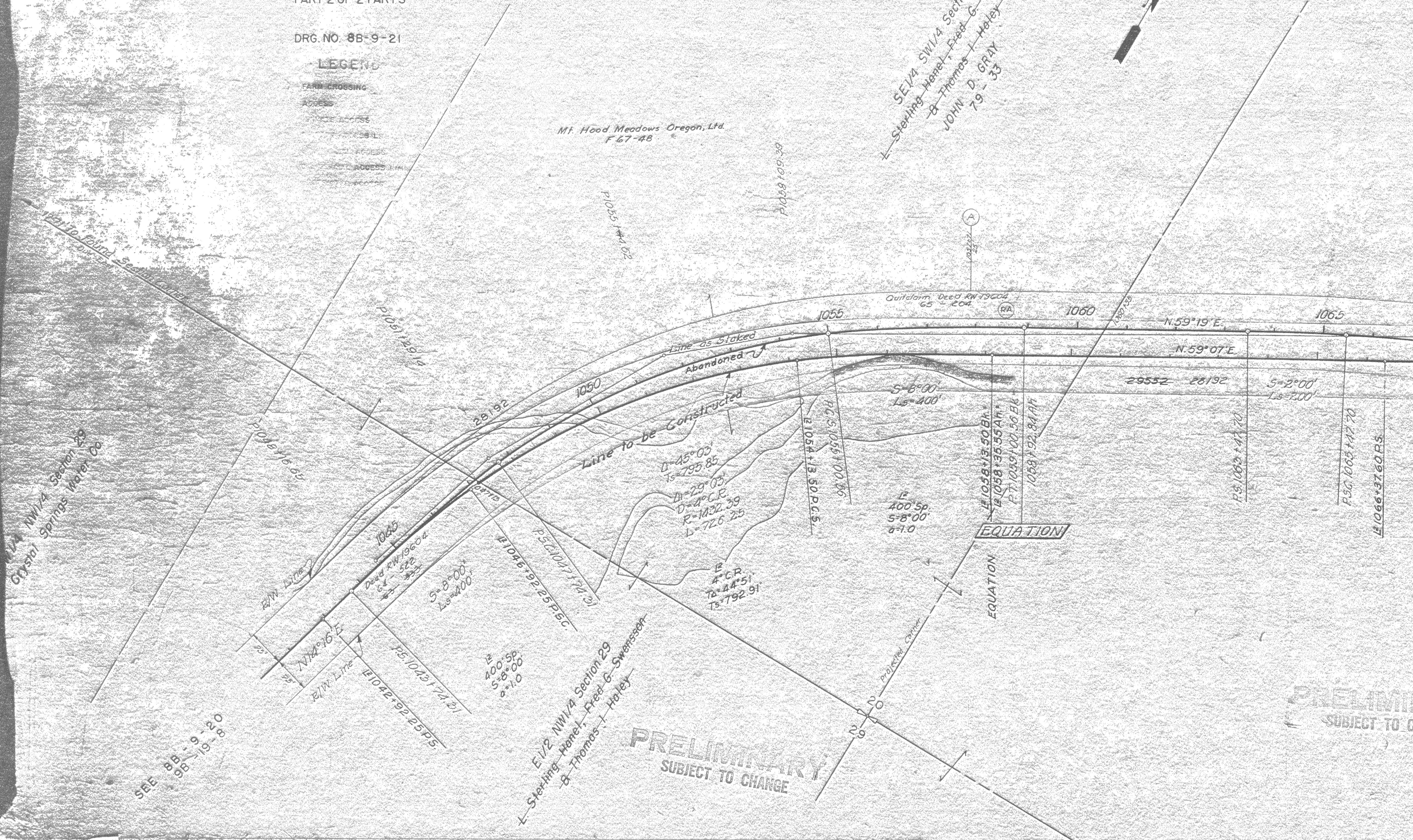
8B 9-21 PRELIMINARY

SW 1/4 NW 1/4 Section 20
Crystal Springs Water Co

SEE 8B 9-19 338

PRELIMINARY
SUBJECT TO CHANGE

PRELIMINARY
SUBJECT TO CHANGE



PRELIMINARY
SUBJECT TO CHANGE

PRELIMINARY
SUBJECT TO CHANGE

MOUNT HOOD NATIONAL FOREST

SEE 9B-19-8 FOR NEW RW

E 1/2 NE 1/4 Section 20
Starting Home, Fred G Swenson
& Thomas Haley

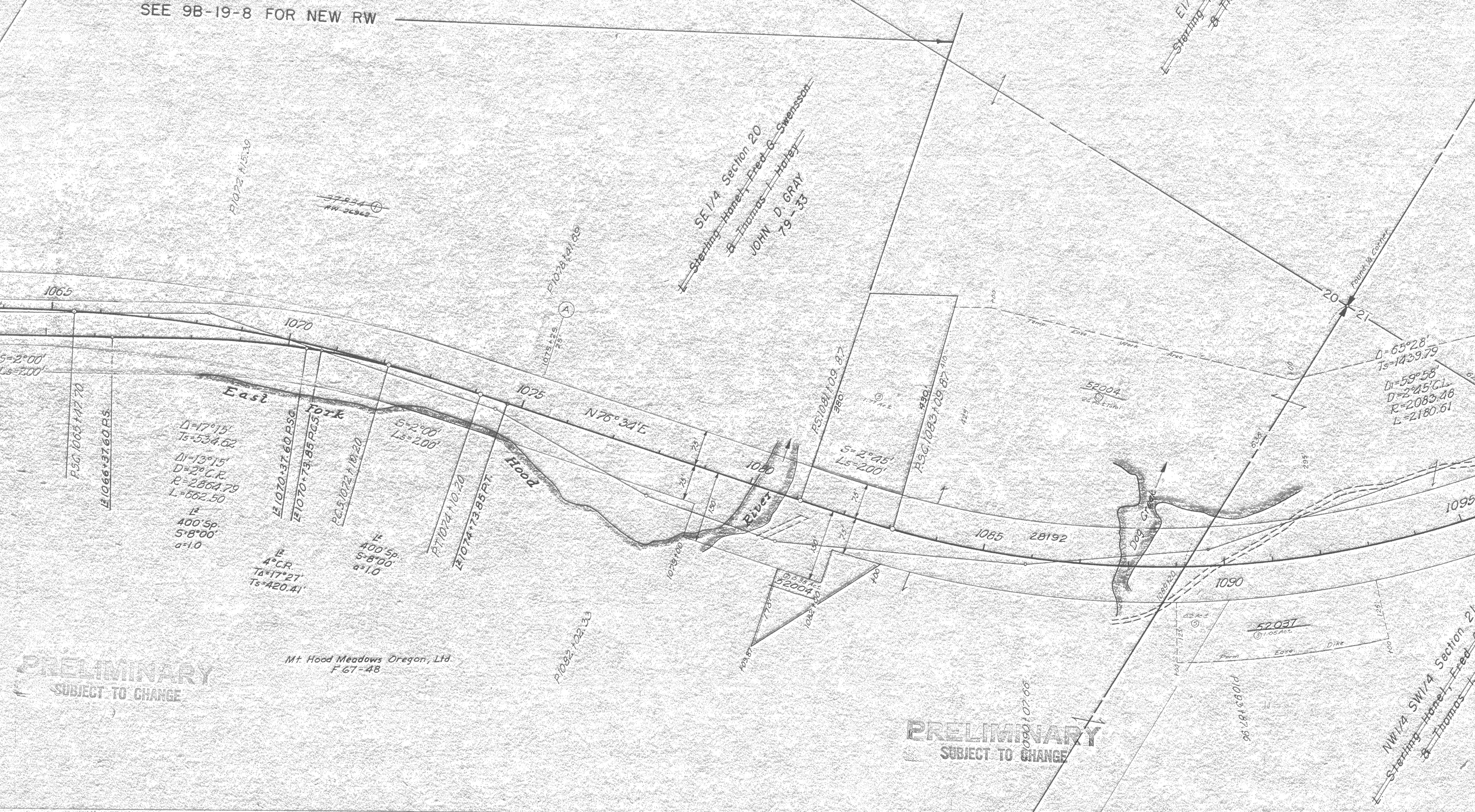
SE 1/4 Section 20
Starting Home, Fred G Swenson
& Thomas Haley
JOHN D. GRAY
79-33

NW 1/4 SW 1/4 Section 21
Starting Home, Fred
& Thomas Haley

Mt Hood Meadows Oregon, Ltd.
F 67-48

PRELIMINARY
SUBJECT TO CHANGE

PRELIMINARY
SUBJECT TO CHANGE



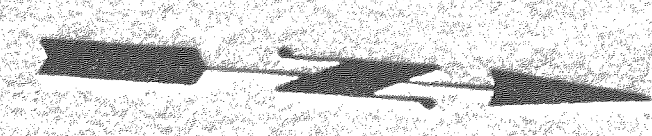
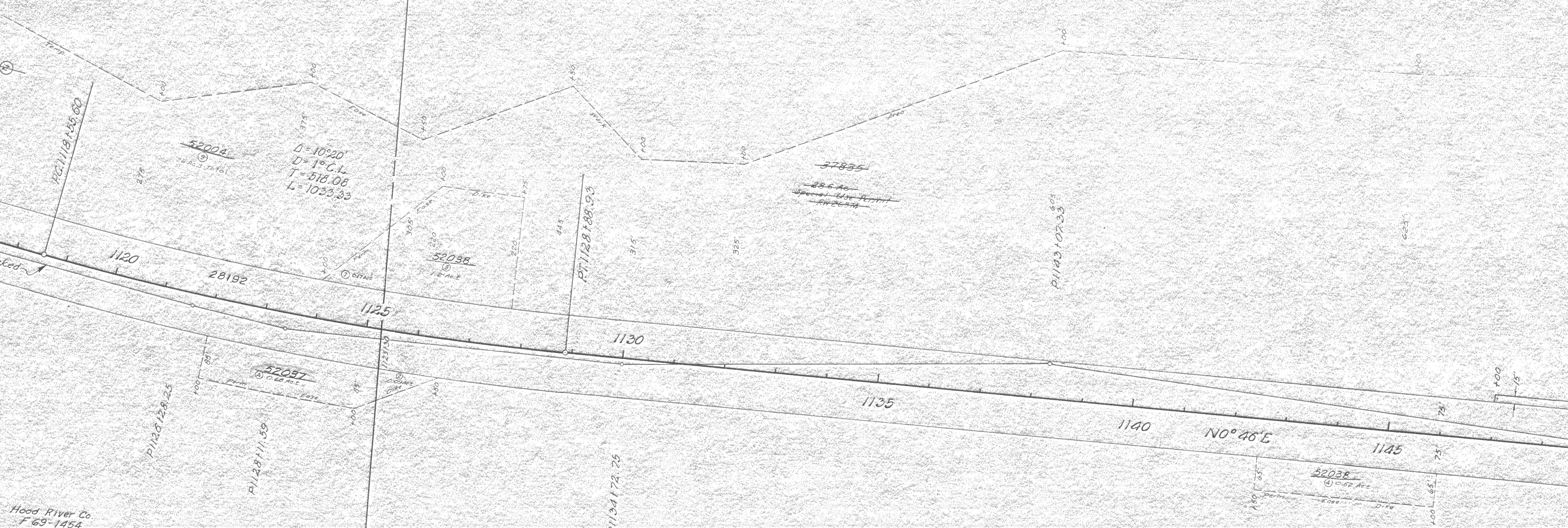
PRELIMINARY
SUBJECT TO CHANGE

PRELIMINARY
SUBJECT TO CHANGE

PRELIMINARY
SUBJECT TO CHANGE

MOUNT HOOD NAT

Mt. Hood Meadows Oregon, Ltd.
F 67-48



PRELIMINARY
SUBJECT TO CHANGE

PRELIMINARY
SUBJECT TO CHANGE

Hood River Co
F 69-1454

PRELIMINARY
SUBJECT TO CHANGE

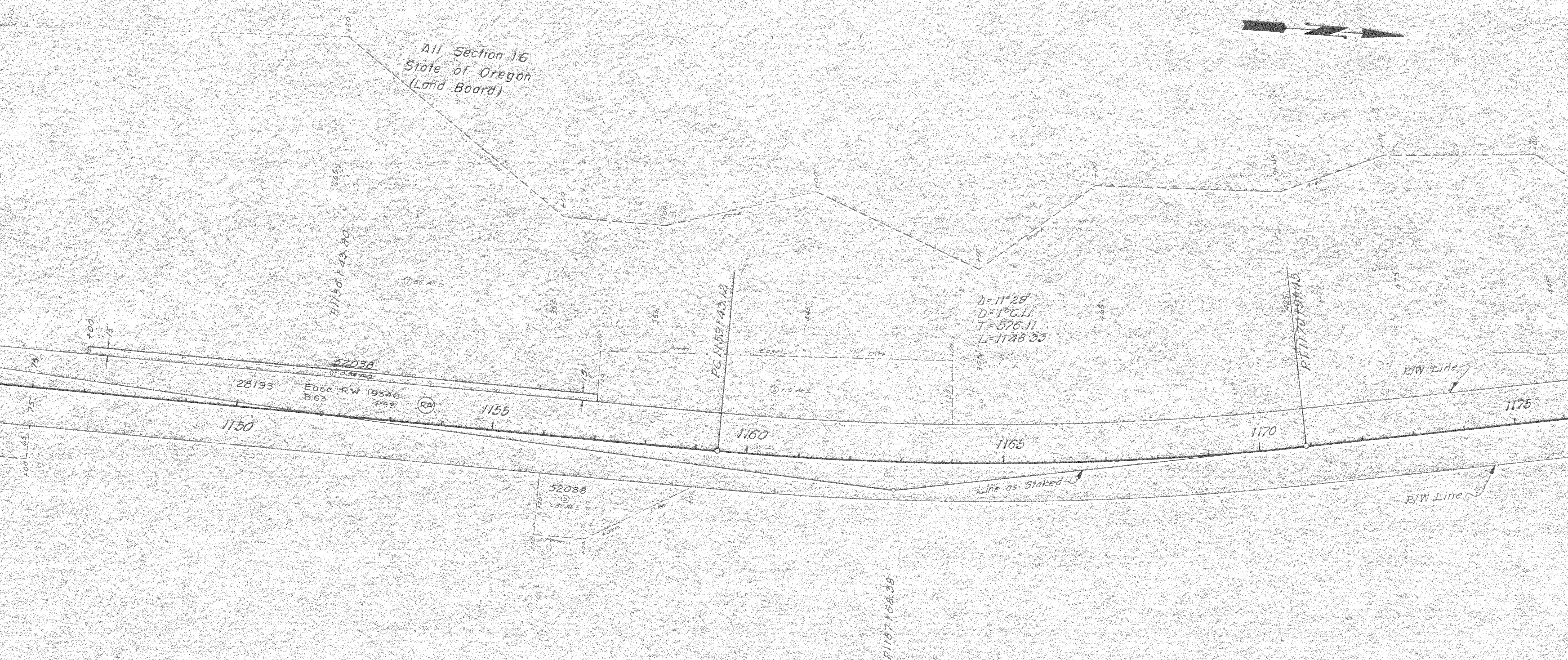
T. I. S., R. I. O. E., W. M.
DRG. NO. 8B-9-21

NATIONAL FOREST

PRELIMINARY
SUBJECT TO CHANGE



All Section 16
State of Oregon
(Land Board)



PRELIMINARY
SUBJECT TO CHANGE

PRELIMINARY
SUBJECT TO CHANGE

PRELIMINARY
SUBJECT TO CHANGE

PRELIMINARY
SUBJECT TO CHANGE

MOUNT

17 8
16 6
Found section corner

Projected corner

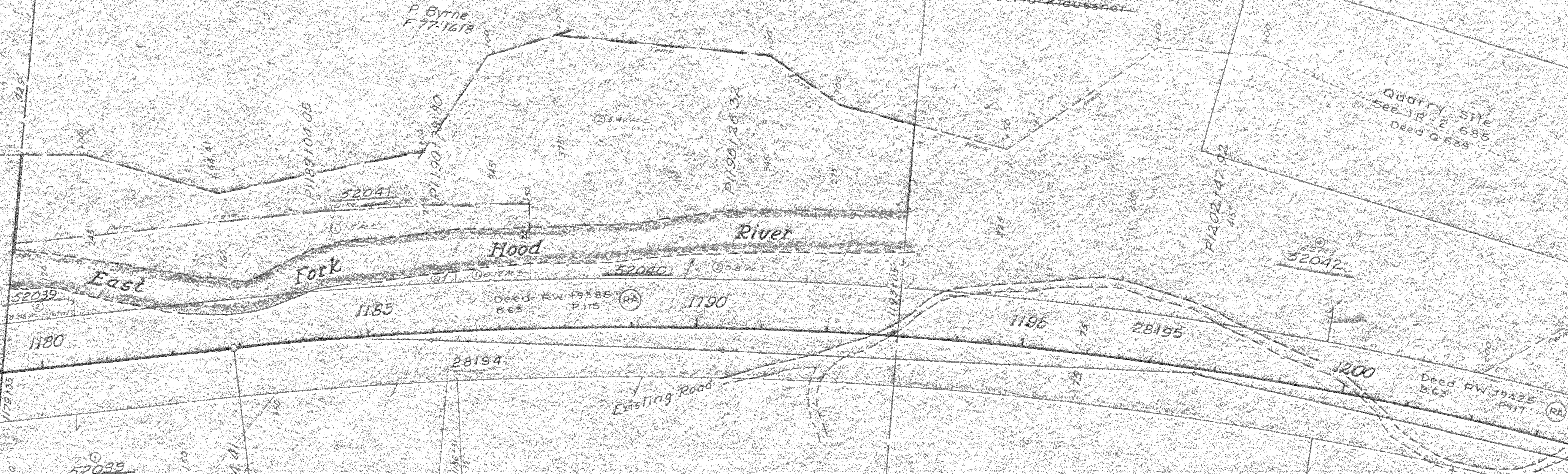
1/2 SW1/4
Section 9

Kenneth Horsey et al
51-72

P. Byrne
F 77-1618

NW 4 SW 4 Sec. 9
Bertha Klausner

Quarry Site
Sec 18 2-686
Deed Q 639



52039

52041

52040

52042

N10°43'W

1175

1180

1185

28194

1190

1195

28195

1200

52039

P.C. 1182.194 d1

A

A

S.A. Hallmeyer et al
F 77-1590
W.A. Sturman et al (C.P.)
F 78-2964

1/2 SW1/4
Section 9
George J. & Irene J. Hanet

H.E. Hallmeyer
F 76-1959
R.L. Danko et al (C.P.)
F 78-2965

Victoria A. Adams
79-574

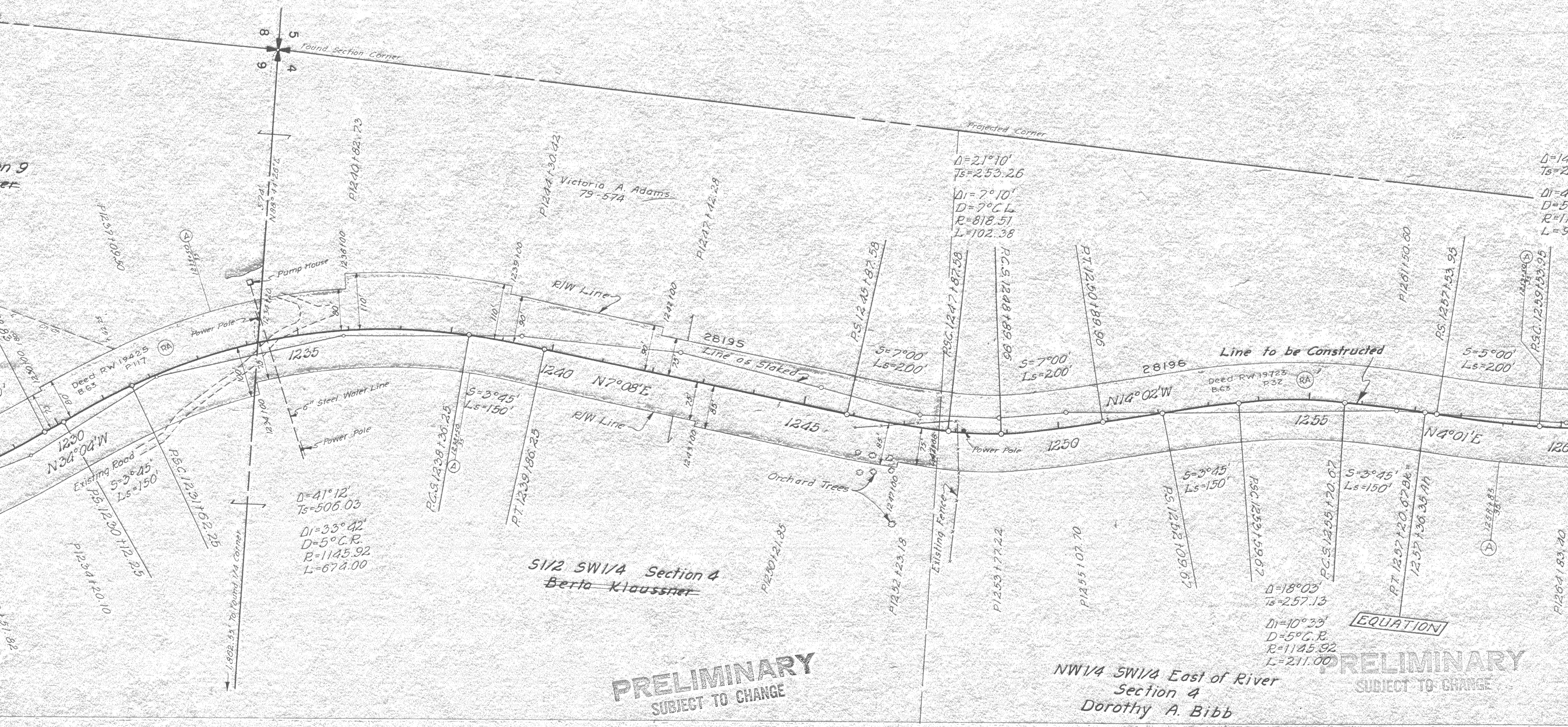
PRELIMINARY
SUBJECT TO CHANGE

PRELIMINARY
SUBJECT TO CHANGE

PRELIMINARY
SUBJECT TO CHANGE

PRELIMINARY
SUBJECT TO CHANGE

PRELIMINARY
SUBJECT TO CHANGE



$D=41^{\circ}12'$
 $T_s=506.03$
 $D_1=35^{\circ}42'$
 $D=5^{\circ}C.R.$
 $R=1145.92$
 $L=674.00$

$D=21^{\circ}10'$
 $T_s=253.26$
 $D_1=7^{\circ}10'$
 $D=7^{\circ}C.L.$
 $R=818.51$
 $L=102.38$

$D=18^{\circ}03'$
 $T_s=257.13$
 $D_1=10^{\circ}33'$
 $D=5^{\circ}C.R.$
 $R=1145.92$
 $L=211.00$

PRELIMINARY
SUBJECT TO CHANGE

PRELIMINARY
SUBJECT TO CHANGE

NW1/4 SW1/4 East of River
Section 4
Dorothy A. Bibb

EQUATION

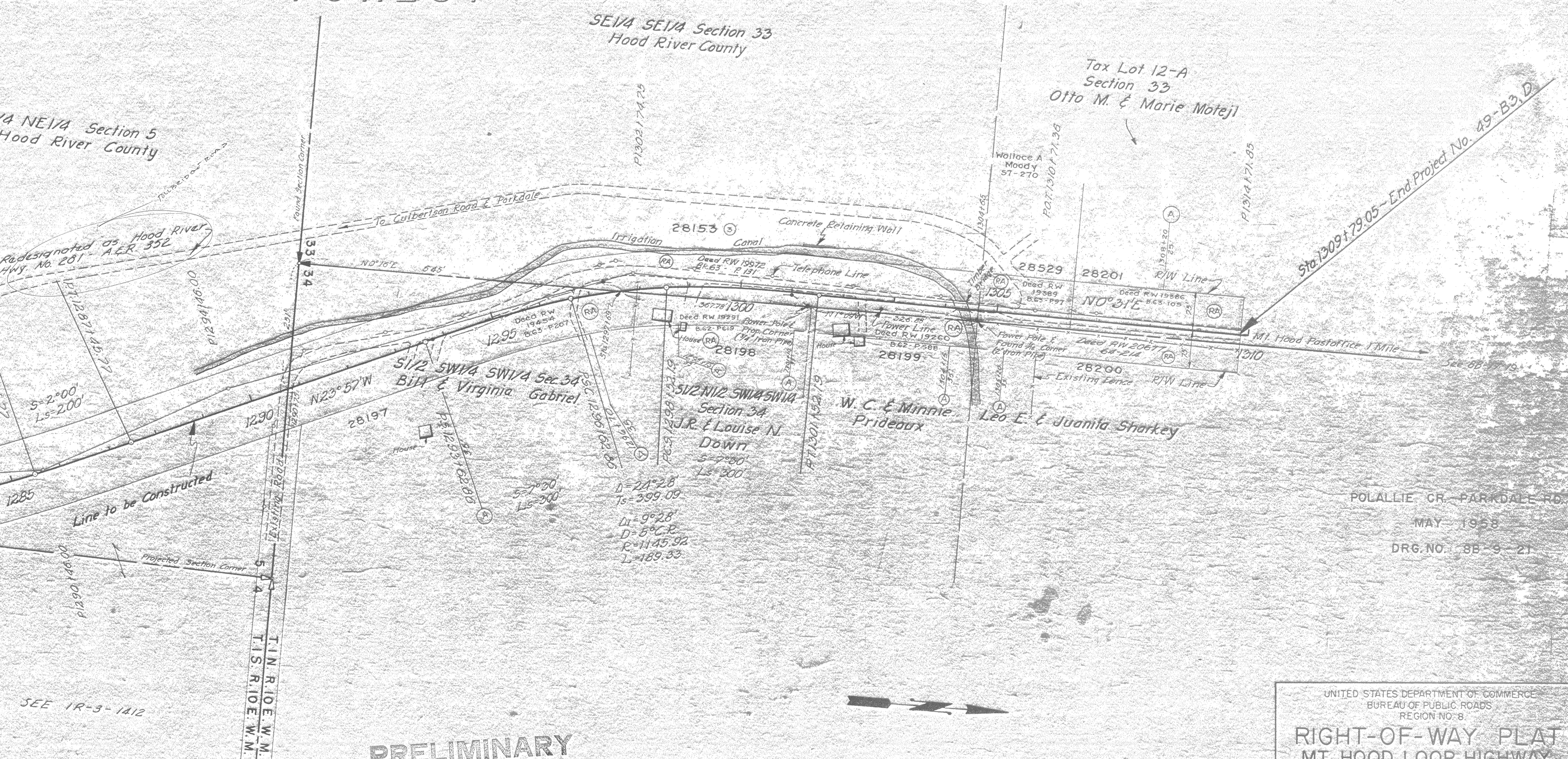
MINIARY
TO CHANGE

PRELIMINARY
SUBJECT TO CHANGE

PRELIMINARY
SUBJECT TO CHANGE

Scale
1" = 100'

ONAL FOREST



POLALLIE CR - PARKDALE RD. SEC
MAY 1958
DRG. NO. 8B-9-21

SEE 1R-3-1A12

PRELIMINARY
SUBJECT TO CHANGE

PRELIMINARY
SUBJECT TO CHANGE

UNITED STATES DEPARTMENT OF COMMERCE
BUREAU OF PUBLIC ROADS
REGION NO. 8

RIGHT-OF-WAY PLAT
MT. HOOD LOOP HIGHWAY
OREGON FOREST HIGHWAY ROUTE 49
PROJECT NO. 49-B3, D
MT. HOOD NATIONAL FOREST
HOOD RIVER CO.

Scale: 1" = 100' J.F.M. May, 1958