

# POLALLIE CREEK-PARKDALE ROAD SECTION

## MOUNT HOOD HIGHWAY

HOOD RIVER COUNTY

Scale: 1 inch = 100 feet

May, 1958

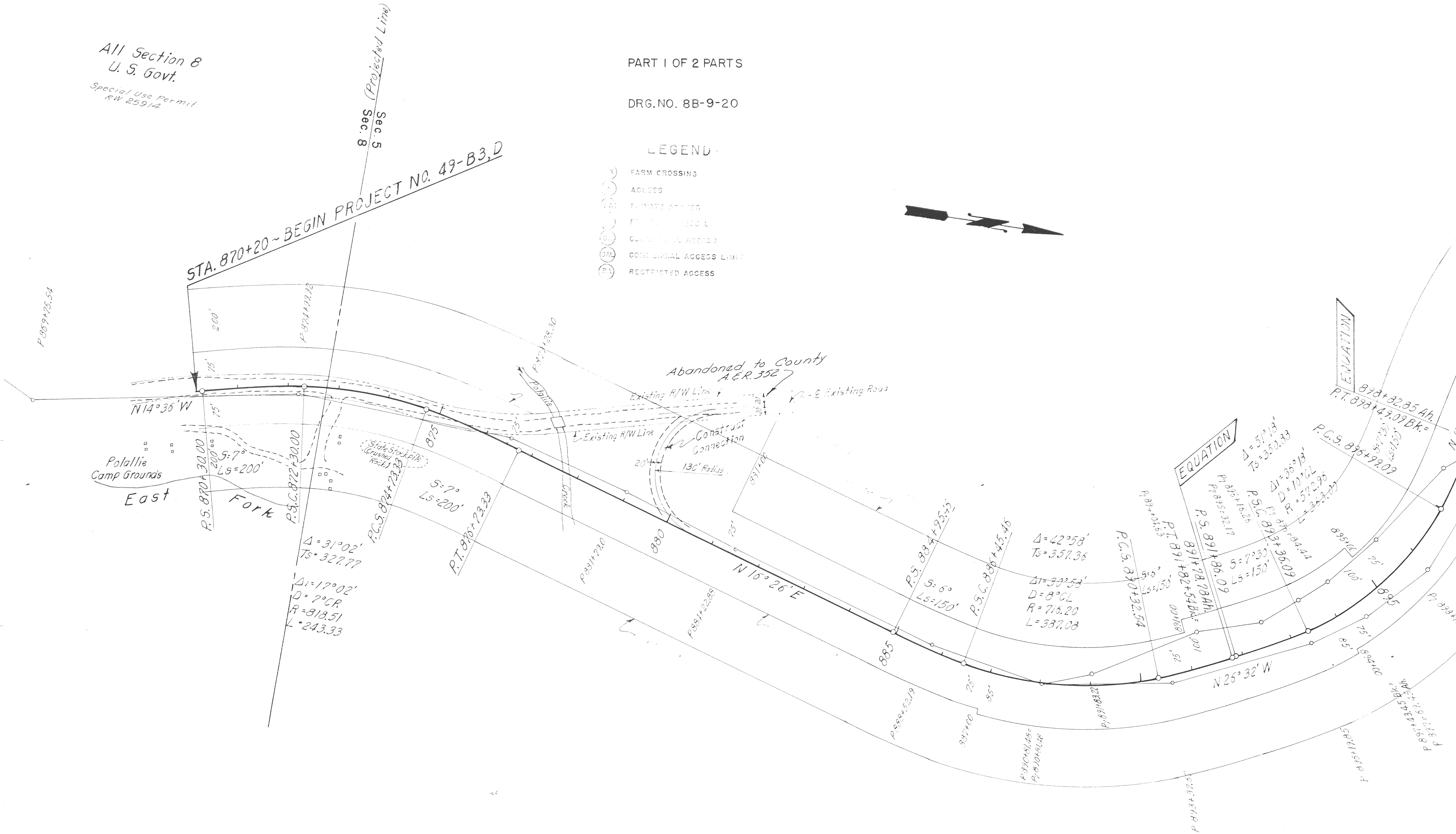
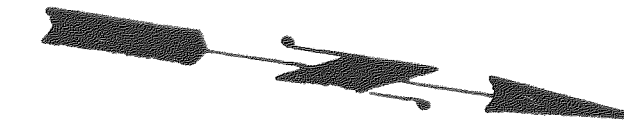
MOUNT HOOD

PART I OF 2 PARTS

DRG. NO. 8B-9-20

### LEGEND

- FARM CROSSING
- ACCESS
- PRIVATE ACCESS
- EASEMENT
- COUNTY ROAD ACCESS
- COMMERCIAL ACCESS LIMIT
- RESTRICTED ACCESS



All Section 8  
U. S. Govt.  
Special Use Permit  
RW 2591A

STA. 870+20 ~ BEGIN PROJECT NO. 49-B3,D

Sec. 5  
Sec. 8 (Projected Line)

DRG. NO. 8B-9-20

STARTS TO PART 2

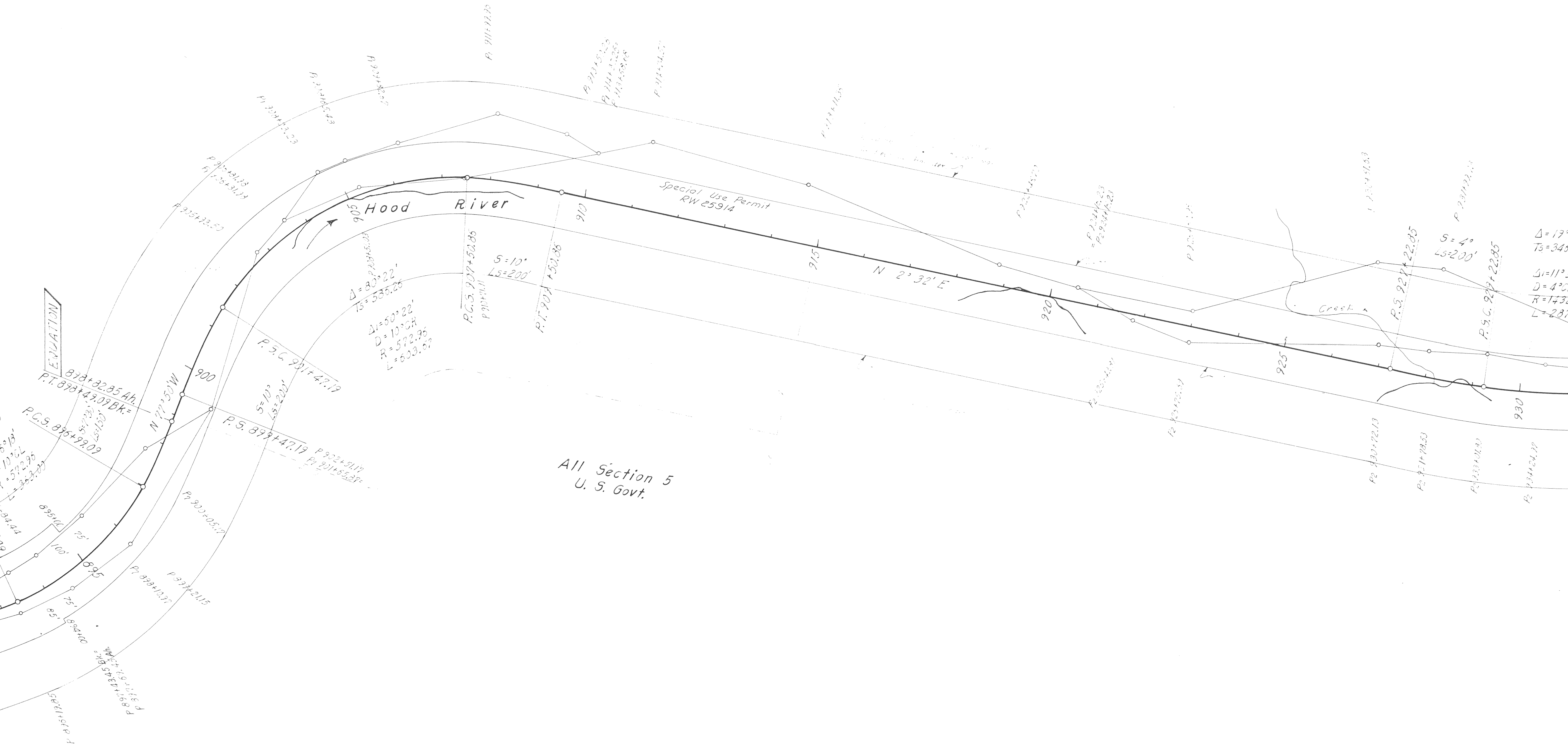
SCALE: 1" = 100'

W.M. HOOD, T.M.

SEC. 8

Aug. 35 1958  
Loc. Line  
Polallie Creek to 1/2 mi. south of Dog River Bridge

# N T H O O D N A T I O N A L F O R E S T

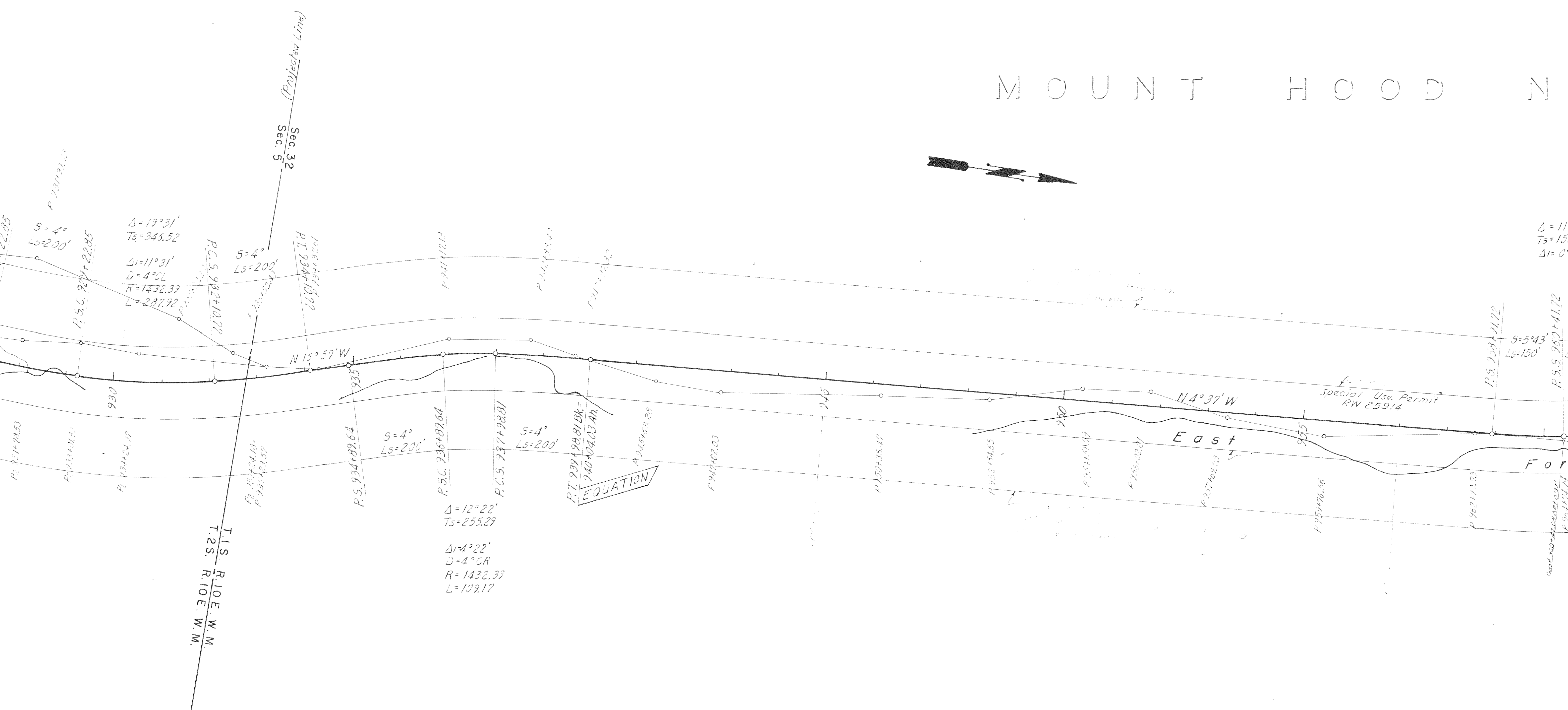
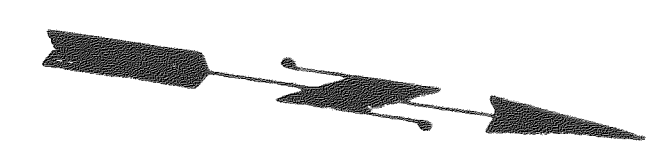


All Section 5  
U. S. Govt.

$\Delta = 19^{\circ}$   
 $T_s = 340$   
 $\Delta_i = 11^{\circ}$   
 $D = 4^{\circ}$   
 $R = 143$   
 $L = 28$

$S = 4^{\circ}$   
 $L_s = 200'$

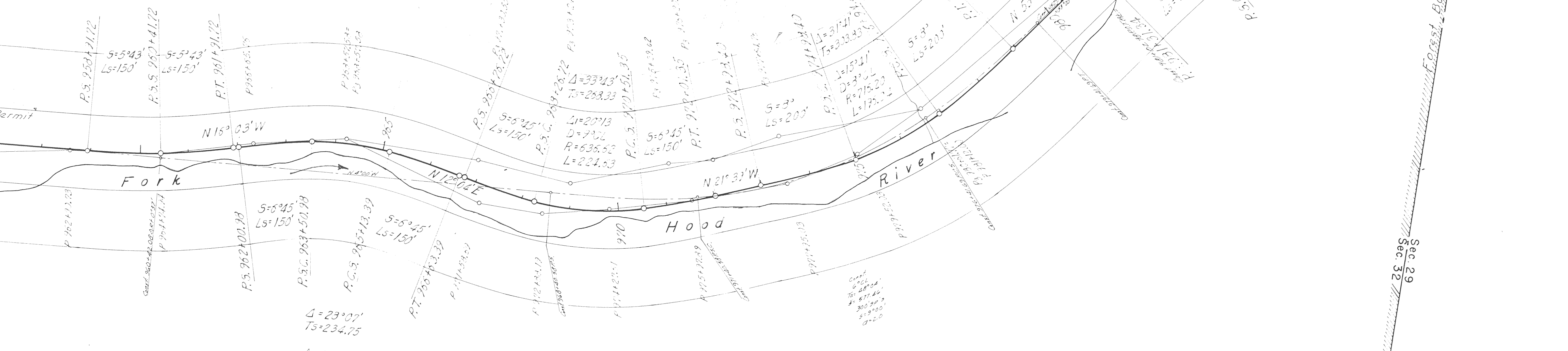
# MOUNT HOOD N



# NATIONAL FOREST

All Section 32  
U. S. Govt.

$\Delta = 11^{\circ}26'$   
 $T_s = 150.36$   
 $L_s = 0^{\circ}20'$



$\Delta = 23^{\circ}07'$   
 $T_s = 234.75$

$\Delta_i = 14^{\circ}37'$   
 $D = 9^{\circ}CR$   
 $R = 536.62$   
 $L = 162.41$

$\Delta = 73^{\circ}44'$   
 $T_s = 1041.32$

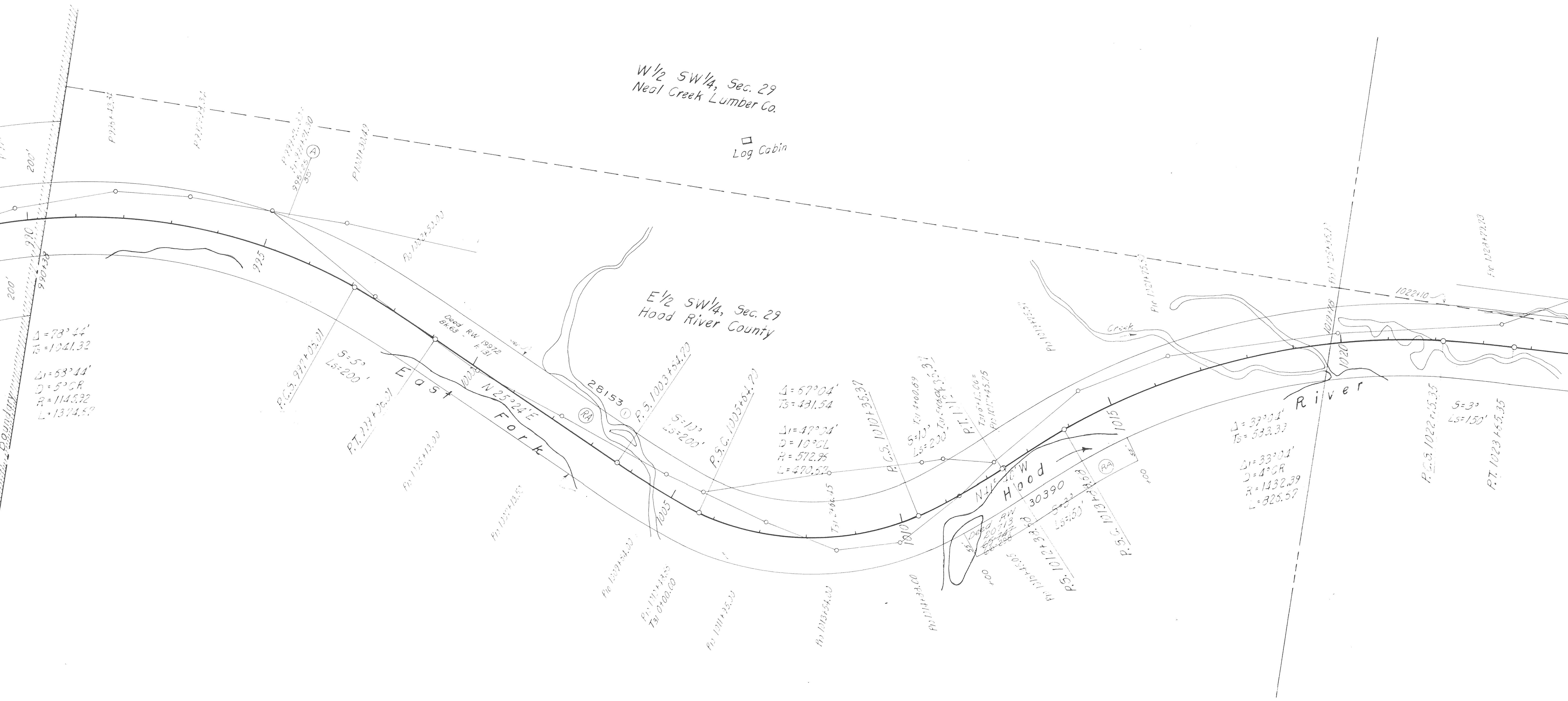
$\Delta_i = 63^{\circ}44'$   
 $D = 5^{\circ}CR$   
 $R = 1145.92$   
 $L = 1324.57$

Sec. 29  
Sec. 32

W 1/2 SW 1/4, Sec. 29  
Neal Creek Lumber Co.

□ Log Cabin

E 1/2 SW 1/4, Sec. 29  
Hood River County



$\Delta = 73^\circ 44'$   
 $T_s = 1041.32$   
 $\Delta = 63^\circ 44'$   
 $D = 5^\circ CR$   
 $R = 1145.92$   
 $L = 1374.52$

P.C.S. 997+05.01  
S = 5°  
Ls = 200'

P.T. 997+05.01  
E 1/2  
N 25° 24' E  
Folk

P.S. 1003+54.70  
S = 10°  
Ls = 200'

$\Delta = 67^\circ 04'$   
 $T_s = 431.54$   
 $\Delta = 42^\circ 24'$   
 $D = 10^\circ CR$   
 $R = 572.95$   
 $L = 420.52$

P.C.S. 1010+55.37  
S = 10°  
Ls = 200'

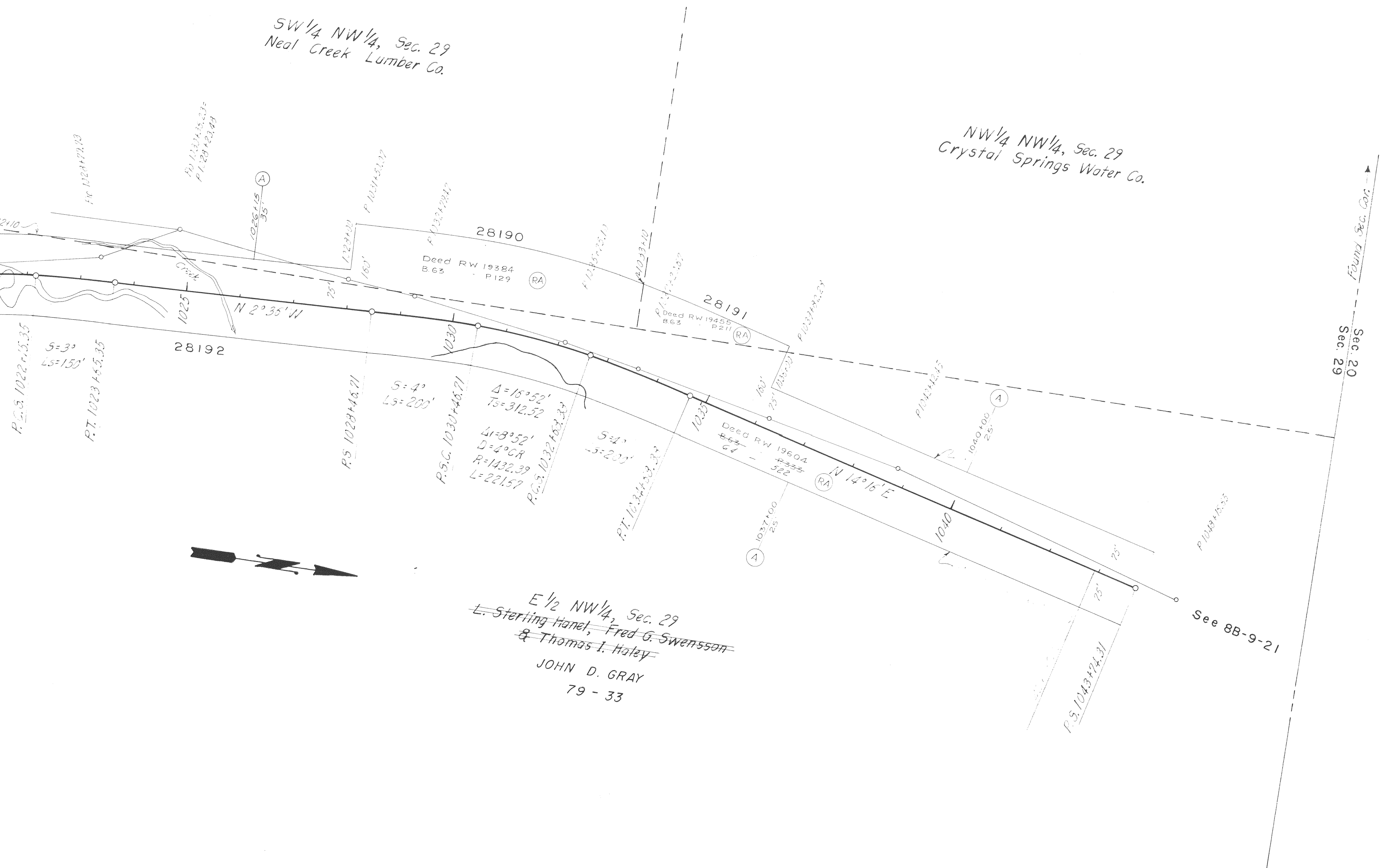
P.T. 1010+55.37  
T<sub>10</sub> = 400.69  
T<sub>10</sub> = 400.69  
R = 1010+55.35

$\Delta = 39^\circ 01'$   
 $T_s = 533.37$   
 $\Delta = 33^\circ 01'$   
 $D = 4^\circ CR$   
 $R = 1432.39$   
 $L = 825.52$

P.S. 1022+10.35  
S = 3°  
Ls = 150'

P.T. 1023+5.35





SW 1/4 NW 1/4, Sec. 29  
Neal Creek Lumber Co.

NW 1/4 NW 1/4, Sec. 29  
Crystal Springs Water Co.

E 1/2 NW 1/4, Sec. 29  
L. Sterling Hanel, Fred G. Swensson  
& Thomas I. Holey  
JOHN D. GRAY  
79 - 33

POLALLIE CR. - PARKDALE RD. SEC.  
MAY 1958  
DRG. NO. 9B-9-20

UNITED STATES DEPARTMENT OF COMMERCE  
BUREAU OF PUBLIC ROADS  
REGION NO. 8  
**RIGHT-OF-WAY PLAT**  
**MT. HOOD LOOP HIGHWAY**  
OREGON FOREST HIGHWAY ROUTE 49  
PROJECT NO. 49-B3, D  
MT. HOOD NATIONAL FOREST  
HOOD RIVER CO.  
Scale: 1" = 100' J.F.M. May, 1958

POLALLIE CR. - PARKDALE RD. SEC. 32  
MT. HOOD HWY. LOCATED LINE  
SCALE 1" = 100'  
PART 1 OF 5 PARTS  
9B-9-20

# POLALLIE CREEK-PARKDALE ROAD SECTION

## MOUNT HOOD HIGHWAY

HOOD RIVER COUNTY

Scale: 1 inch = 100 feet

May, 1958

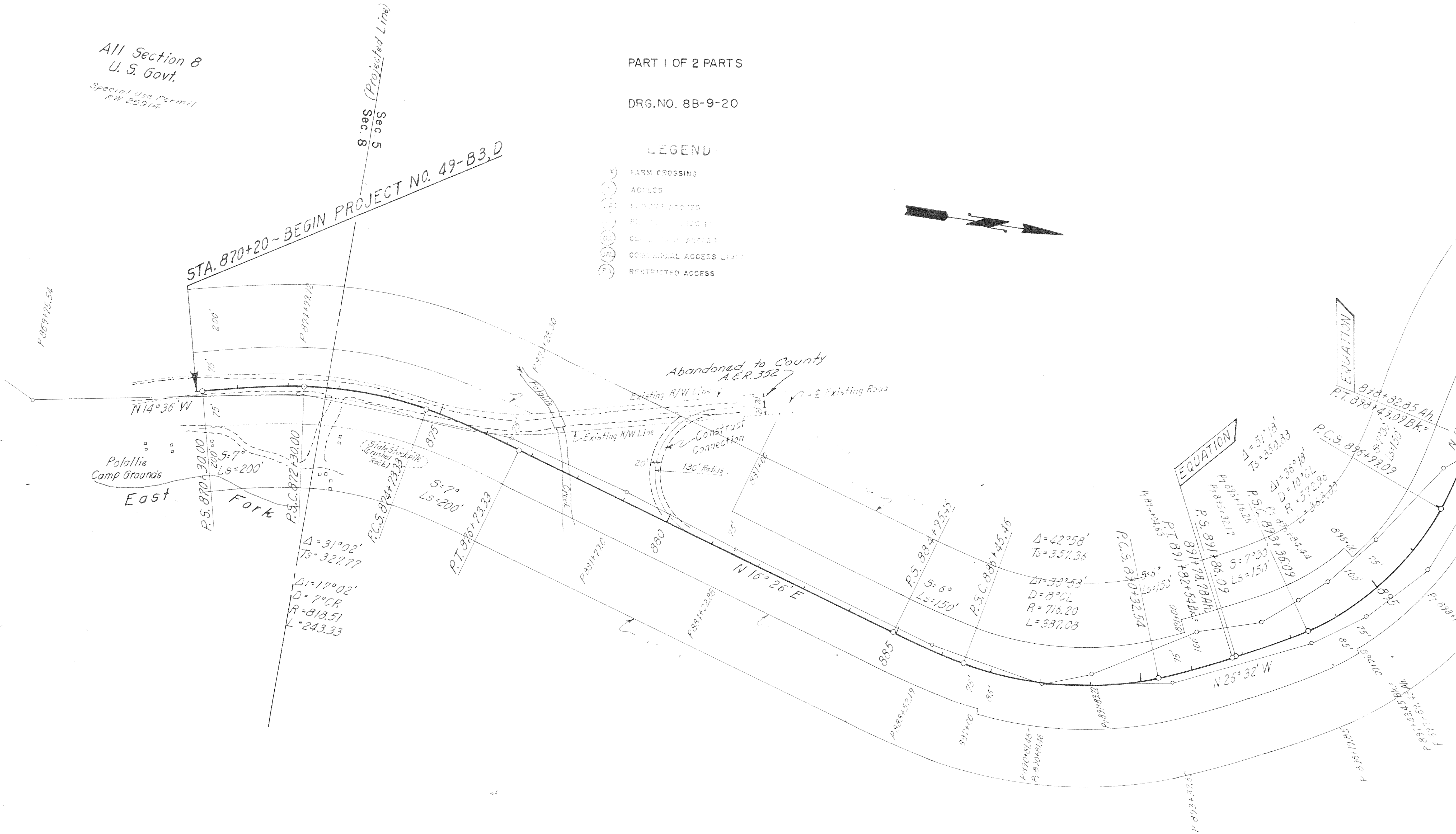
# MOUNT HOOD

PART I OF 2 PARTS

DRG. NO. 8B-9-20

### LEGEND

- FARM CROSSING
- ACCESS
- PRIVATE ACCESS
- RESTRICTED ACCESS
- COMMERCIAL ACCESS LIMIT
- RESTRICTED ACCESS



All Section 8  
U. S. Govt.

Special Use Permit  
RW 2591A

STA. 870+20 ~ BEGIN PROJECT NO. 49-B3,D

Sec. 5  
8:88 (Projected Line)

DRG. NO. 8B-9-20

PART 5 TO 1 PART 2

SCALE: 1" = 100'

W.M. HOOD, T.M.

SEC. 8B-9-20

Aug. 35 1958  
Loc. Line  
Polallie Creek to 1/2 mi. south of Dog River Bridge

# N T H O O D N A T I O N A L F O R E S T



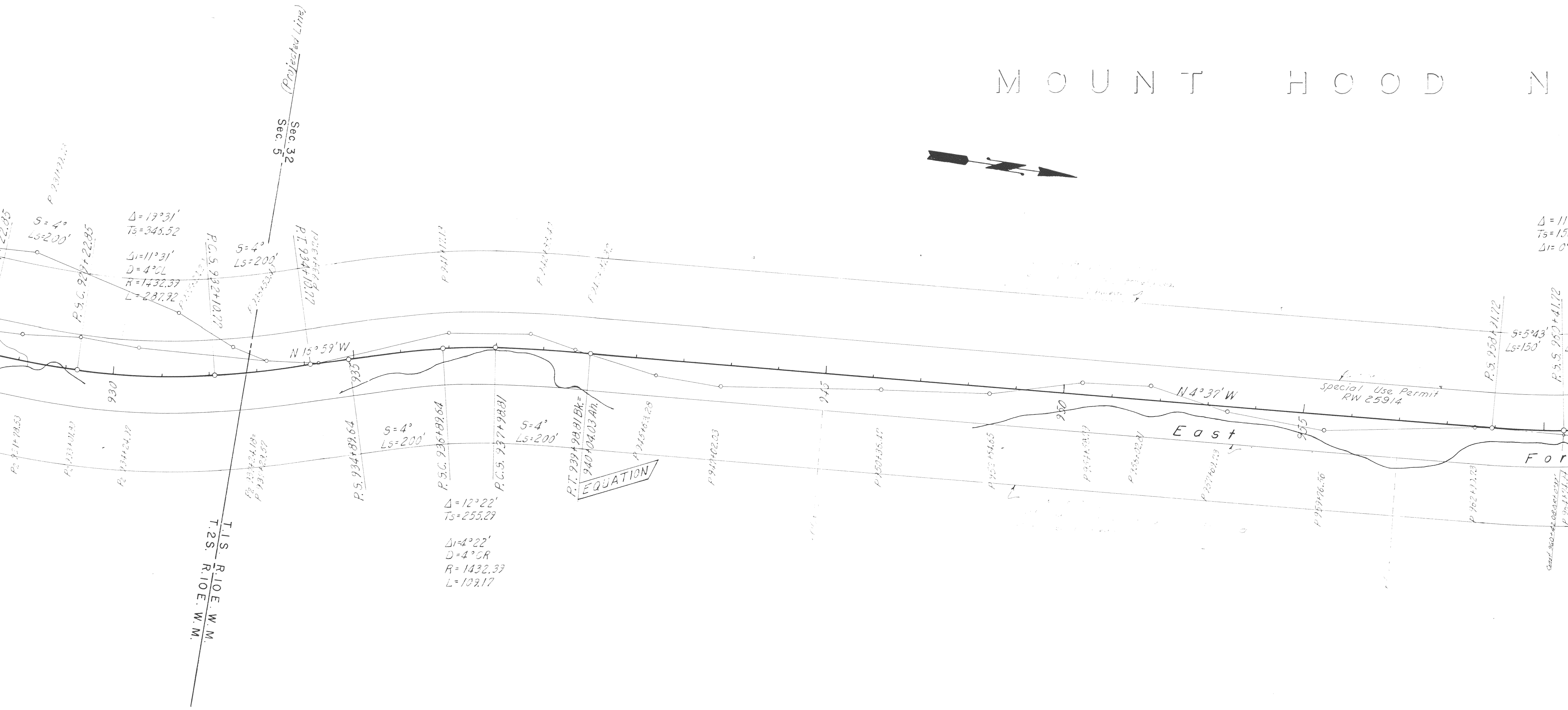
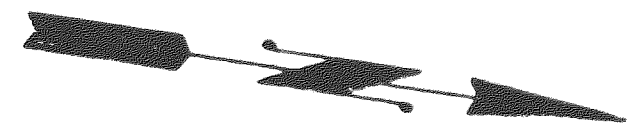
All Section 5  
U. S. Govt.

$\Delta = 19^{\circ}$   
 $T_s = 340'$   
 $\Delta = 11^{\circ}$   
 $D = 4^{\circ}$   
 $R = 143'$   
 $L = 28'$

$S = 4^{\circ}$   
 $L_s = 200'$



# MOUNT HOOD N



# NATIONAL FOREST

All Section 32  
U. S. Govt.

$\Delta = 11^{\circ}26'$   
 $T_s = 150.36$   
 $L_s = 0^{\circ}20'$



$\Delta = 23^{\circ}07'$   
 $T_s = 234.75$

$\Delta_i = 14^{\circ}37'$   
 $D = 9^{\circ}CR$   
 $R = 636.62$   
 $L = 162.41$

$\Delta = 73^{\circ}44'$   
 $T_s = 1041.32$

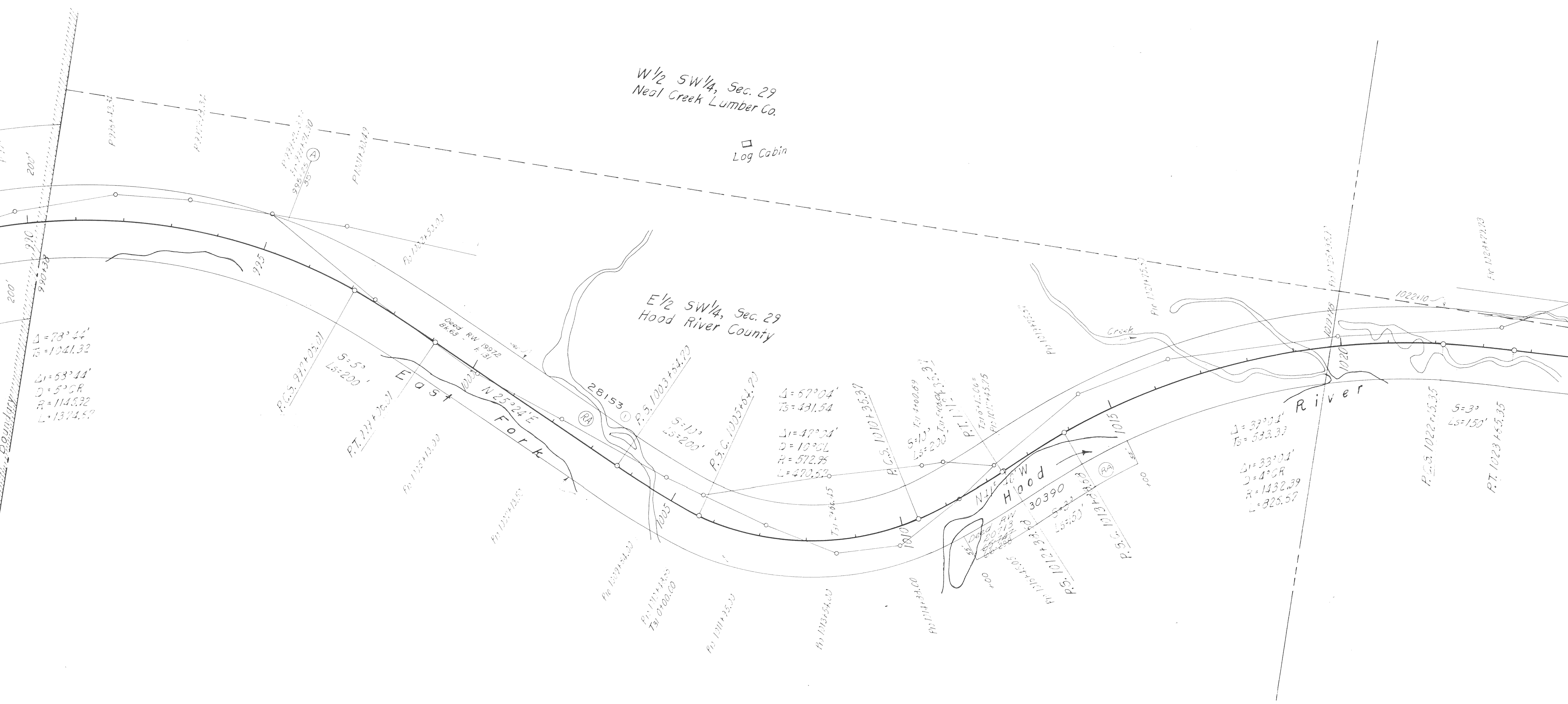
$\Delta_i = 63^{\circ}44'$   
 $D = 5^{\circ}CR$   
 $R = 1145.92$   
 $L = 1324.57$

Sec. 29  
Sec. 32

W 1/2 SW 1/4, Sec. 29  
Neal Creek Lumber Co.

□  
Log Cabin

E 1/2 SW 1/4, Sec. 29  
Hood River County



$\Delta = 73^\circ 44'$   
 $Ts = 1041.32$   
 $\Delta = 63^\circ 44'$   
 $D = 5^\circ CR$   
 $R = 1145.92$   
 $L = 1374.57$

P.C.S. 977+05.01  
S = 5°  
Ls = 200'

P.T. 977+05.01  
E 1/2  
Folk

P.C.S. 1003+54.70S = 10°  
Ls = 200'

P.C.S. 1003+54.70S = 10°  
Ls = 200'

P.C.S. 1003+54.70S = 10°  
Ls = 200'

P.C.S. 1003+54.70S = 10°  
Ls = 200'

P.C.S. 1003+54.70S = 10°  
Ls = 200'

$\Delta = 57^\circ 04'$   
 $Ts = 431.54$

$\Delta = 42^\circ 24'$   
 $D = 10^\circ CR$   
 $R = 572.95$   
 $L = 420.53$

P.C.S. 1010+35.37S = 10°  
Ls = 200'

P.C.S. 1010+35.37  
S = 10°  
Ls = 200'

P.C.S. 1010+35.37  
S = 10°  
Ls = 200'

P.C.S. 1010+35.37  
S = 10°  
Ls = 200'

P.C.S. 1010+35.37  
S = 10°  
Ls = 200'

$\Delta = 39^\circ 04'$   
 $Ts = 533.37$

$\Delta = 33^\circ 04'$   
 $D = 4^\circ CR$   
 $R = 1432.39$   
 $L = 825.57$

P.C.S. 1022+55.35S = 3°  
Ls = 150'

P.T. 1023+55.35S = 3°  
Ls = 150'

POLALLIE CR. - PARKDALE RD. SEC. 32  
MT. HOOD HWY. LOCATED LINE  
SCALE 1" = 100'  
PART 1 OF 5 PARTS  
8B-9-50

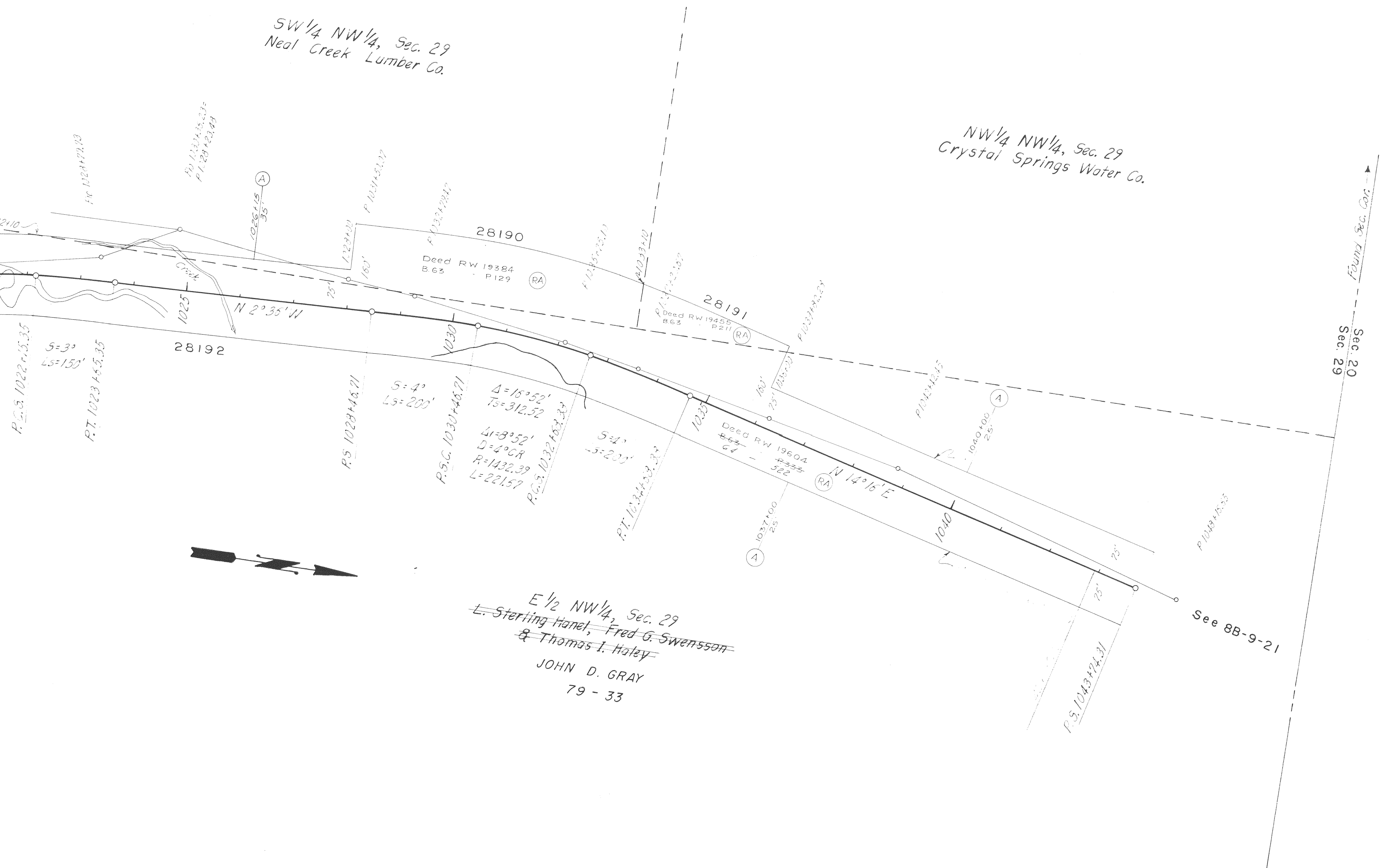
SW 1/4 NW 1/4, Sec. 29  
Neal Creek Lumber Co.

NW 1/4 NW 1/4, Sec. 29  
Crystal Springs Water Co.

POLALLIE CR. - PARKDALE RD. SEC.

MAY 1958

DRG. NO. 8B-9-20



E 1/2 NW 1/4, Sec. 29  
 L. Sterling Hanel, Fred G. Swensson  
 & Thomas I. Haley  
 JOHN D. GRAY  
 79 - 33

UNITED STATES DEPARTMENT OF COMMERCE  
 BUREAU OF PUBLIC ROADS  
 REGION NO. 8  
**RIGHT-OF-WAY PLAT**  
**MT. HOOD LOOP HIGHWAY**  
 OREGON FOREST HIGHWAY ROUTE 49  
 PROJECT NO. 49-B3, D  
 MT. HOOD NATIONAL FOREST  
 HOOD RIVER CO.  
 Scale: 1" = 100'      J.F.M.      May, 1958