

6 CL
 Δ=16-54
 ST=1419
 R=3550
 LC=2817

11

J M Lenz

Strawberries

J M Lenz

Strawberries

J M Lenz

Meadow

Strawberries

J M Lenz

C H Van Allen

Brush

C H Van Allen

Orchard

10 CL
 Δ=39-44
 ST=2075
 R=5730
 LC=3382

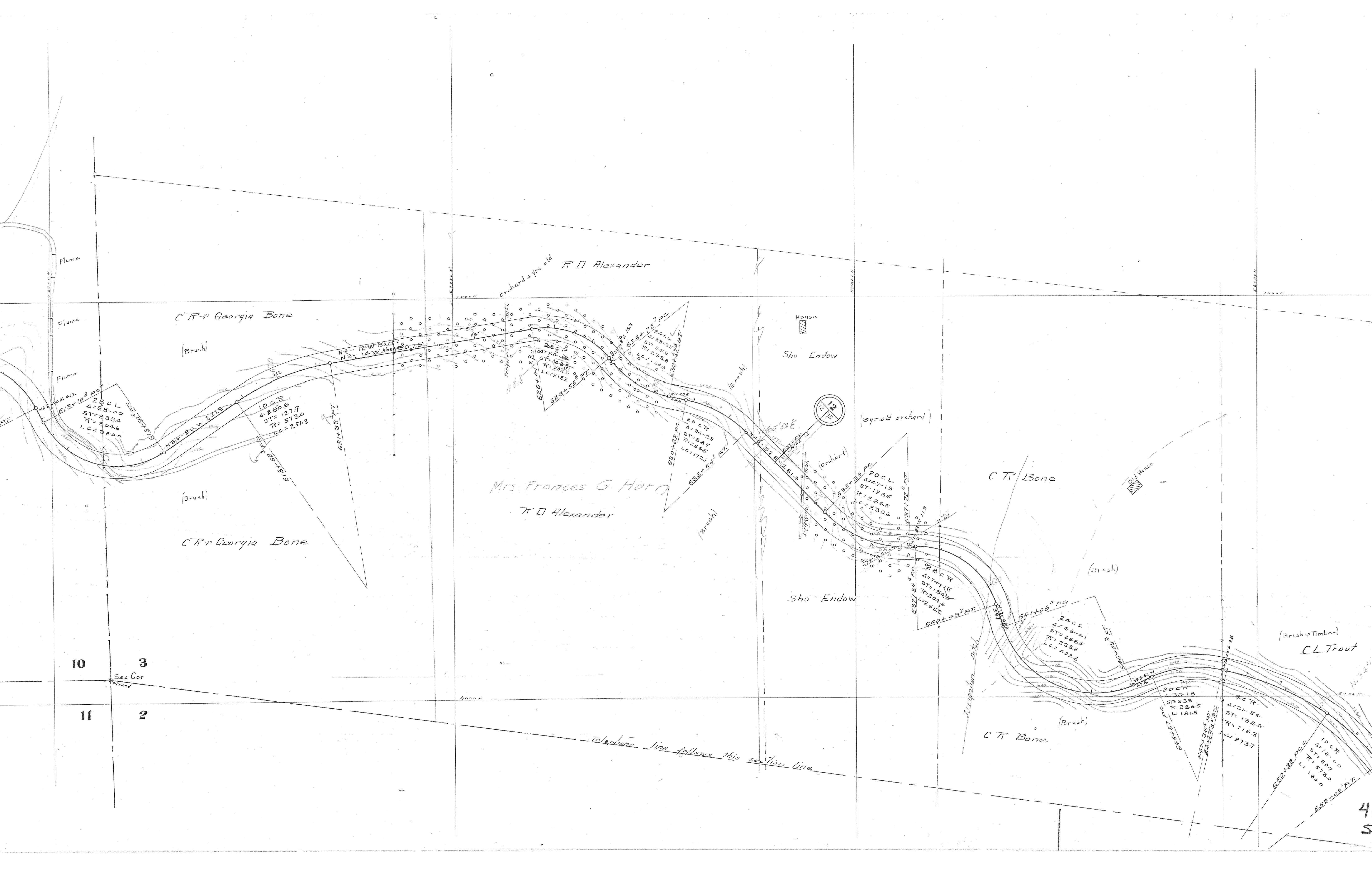
28 CR
 Δ=30-29
 ST=2064
 R=2046
 LC=3232

28 CL
 Δ=38-00
 ST=2354
 R=2046
 LC=3500

4F9-8
 Sh.2

10

11



C R + Georgia Bone

(Brush)

Orchard 4 yrs old R D Alexander

House

Sho Endow

Mrs. Frances G. Horn

R D Alexander

(3yr. old orchard)

C R Bone

House

(Brush)

C R + Georgia Bone

(Brush)

Sho Endow

(Brush)

(Brush + Timber)

CL Trout

10 3
Sec Cor

11 2

Telephone line follows this section line

C R Bone

(Brush)

4
5



Sec 3
 Sec Line
 Sec 2

10CL
 Δ=17-53
 ST=90.2
 R=573.0
 LL=178.8

10CR
 Δ=18-00
 ST=90.7
 R=573.0
 L=180.0

10CL
 Δ=17-53
 ST=90.2
 R=573.0
 LL=178.8

29CR
 Δ=36-20
 ST=220.7
 R=197.0
 L=332.0

24CR
 Δ=81-48
 ST=206.8
 R=238.8
 L=340.8

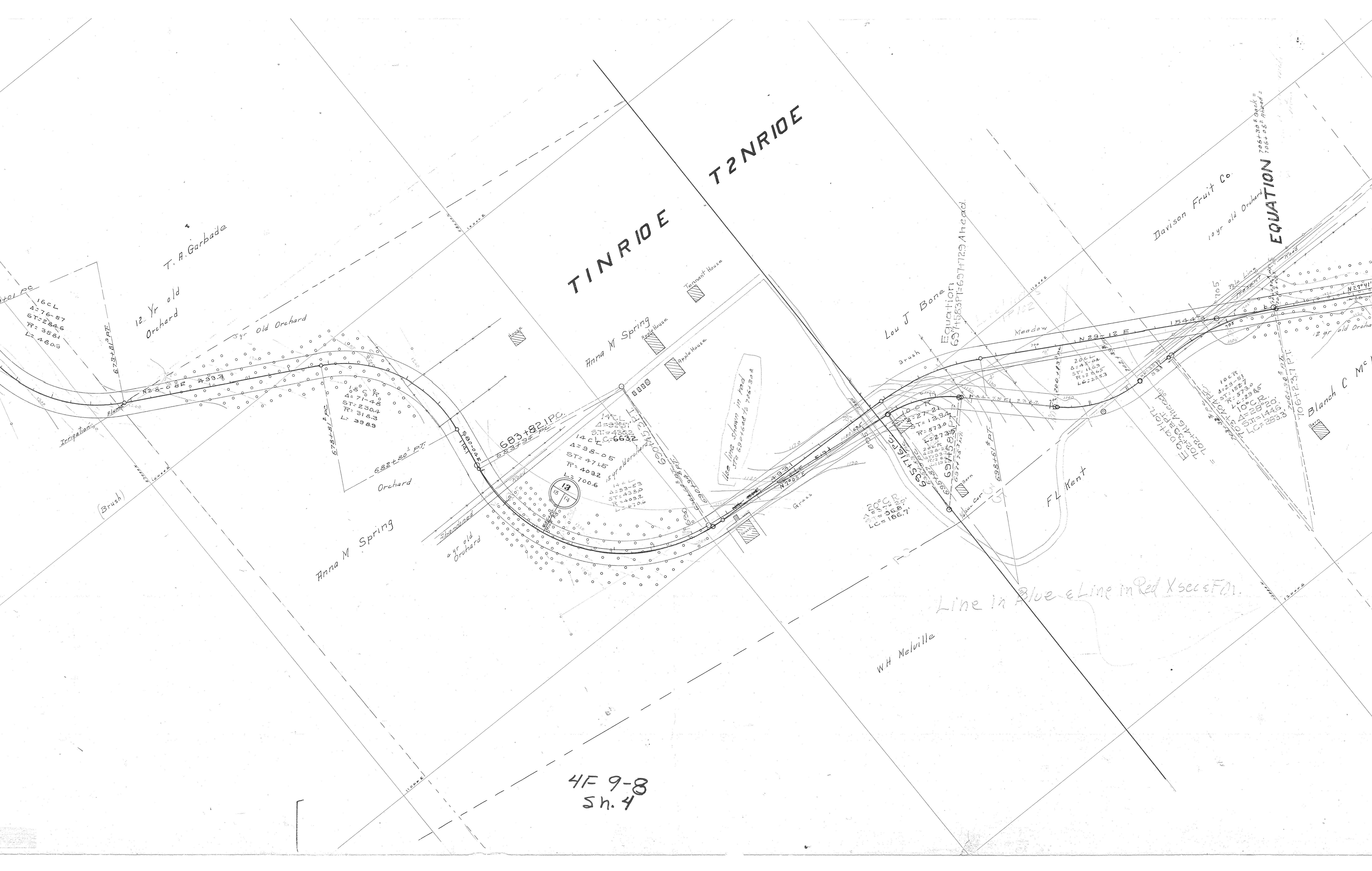
16CL
 Δ=76-57
 ST=284.6
 R=358.1
 L=480.9

Line in Green X Sec & Finished

EQUATION

(Brush & Timber)
 CL Trout

4F 9-8
 Sh. 3



T. A. Garbade

12 Yr old Orchard

54r old Orchard

T1 N R1 D E
T2 N R1 D E

Davison Fruit Co.
10 yr old Orchard

EQUATION

Anna M Spring

Lou J Bone

Meadow

Anna M Spring

FL Kent

Blanch C Me

W H Melville

4F 9-8
Sh. 4

Line in Blue & Line in Red X sec 5 For.

16CL
Δ=76-57
ST=224.6
R=358.1
L=480.9

108 C R
Δ=71-48
ST=230.4
R=318.3
L=398.3

14CL
Δ=93-51
ST=430.2
R=663.2
L=1006

13
14

10CR
Δ=29-51
ST=152.7
R=573.0
L=229.86

10CR
Δ=28-20
ST=144.6
R=588.20
L=225.3

764.30 5' back
766.08 5' ahead

1061.37 PT

1061.37 PT

1061.37 PT

1061.37 PT

1061.37 PT

1061.37 PT

1061.37 PT

1061.37 PT

1061.37 PT

1061.37 PT

1061.37 PT

1061.37 PT

1061.37 PT

1061.37 PT

1061.37 PT

1061.37 PT

1061.37 PT

1061.37 PT

1061.37 PT

N12-45E 668.0
4 CR
Δ = 13.04
ST = 1641
R = 1432.5
LC = 3267

JJ + E Annalla

O H Rhodes

58°14'

28 CR
Δ = 110.12
ST = 110.12
R = 110.12
LC = 110.12

H W + Pauline Krusow

818 + 35 + PC

J R Nunnemaker

2 CR
Δ = 5.29
ST = 1372
R = 2265
LC = 2742

J R Nunnemaker

J O + Mary
Tampkins

Peter Lence

16 CL
Δ = 76.39
ST = 2831
R = 3580
LC = 4781

28 CR
Δ = 99.51
ST = 2432
R = 204.6
LC = 3566

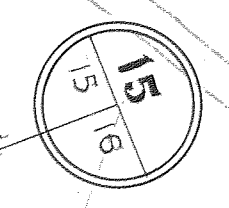
J O + Mary
Tampkins

Mary M Disbrow

Mary A Foley

790 + 29 + PC

12 CR
Δ = 22.64
ST = 4715
R = 4715
LC = 4715



O H Rhodes

793 + 25 + PC

28 CR
Δ = 99.51
ST = 2432
R = 204.6
LC = 3566

DIAMOND SPRINGS

Rhodes

Barn

Barn

Apple House

4F 9-8
Sh. 6

N12-45E 668.0

MT HOOD RAILROAD

To Hood River

Wilson Fike

30° CR
Δ = 178-36
R = 181.0
LC = 595.3

897+61' P.T.

898+67' P.C. 904+62' P.T.
N16-23W 131.0 N14-59E 131.0

244° 42' 15" L
R = 250.9
LC = 225.7

244° 42' 15" L
R = 250.9
LC = 225.7

890+70' P.C.
N12-09W 120.9
R = 250.9
LC = 221.6

17
17.8

874+68' P.C.
N12-09W 120.9
R = 250.9
LC = 221.6

30° CR
Δ = 178-36
R = 181.0
LC = 595.3

898+67' P.C. 904+62' P.T.
N16-23W 131.0 N14-59E 131.0

Wilson Fike

Pencil Line - Partly Built
ST = 330.8
See letter from E. Blocker, May 7th 1925

Orchard Chas A Sproat

Chas A Sproat
(Orchard)

Wilson Fike

(Orchard)

Wilson Fike

Wilson Fike

J L Davis

CT Roberts

SEC 24
T2N R10E

SEC 13
T2N R10E

First row Apple trees

Edge of Orchard

Private Road

4F9-8
sh. 8



Chas A Sproat
(Orchard)

W C + Henrietta Keck

Mary T Hayt

Helen S
Van Horn

Crescent Fruit Co

(Orchard)

(Orchard)

(Orchard)

M M Hill

E L Watts

E C Brownlee

Geo + Nellie Smith

18

4F 9-8
sh. 9

House

House

Private Road

Private Road

Private Road

Private Road

Irrigation Ditch

Telephone Line
First row of apple trees shown by dotted line

Edge of orchard

Edge of orchard

E. L. Watts

E. C. Brownlee

Davis

17000 E

16000 E

17000 E

17000 E

18000 E

16000 E

945+97
13 MILE

950+52.8

950

0-30 CR
41-0-31
ST=5.17
R=11460.0
LC=1034

946+77.8 PT

947+81.2 PT

Equation
1024 to 1036
1024 to 1036
1024 to 1036

Pacific Power & Light Co.

EQUATION
1024 to 1036
1024 to 1036
1024 to 1036

F A Hoosick

EQUATION
1024 to 1036
1024 to 1036
1024 to 1036

Pacific Power & Light Co.

Pacific Power & Light Co.

Finish to Green Line
1007-1036
SEC 1
T2N R10E

SCTP
Δ=14-51
ST=1245
TP=955.0
LC=247.5
SCR
Δ=18-16
ST=1365
R=555.0
LC=2711

9-30 C.R.
Δ=16-45
ST=88.8
R=676.2
LC=176.3
(Brush)

12 C.R.
Δ=28-09
ST=119.7
R=471.5
LC=2346

11 C.L.
Δ=15-31
ST=71.0
R=520.9
LC=184.1

50 C.R.
Δ=11-47
ST=117.7
R=1146.0
LC=254.7

F A Hoosick

4E 9-8
Sh. 11

X-sec = Fin. of Green Line
1024 to 1036

Maxwellton Orchard Co.

Red Line

X-sec = Fin. of Green Line
1024 to 1036

3 C.L.
Δ=6-42
ST=111.8
TP=1910.0
R=955.0
LC=223.3

6 C.L.
Δ=14-35
ST=122.2
R=955.0
LC=248.1

1024 to 1036
1024 to 1036
1024 to 1036

1024 to 1036
1024 to 1036
1024 to 1036

1024 to 1036
1024 to 1036
1024 to 1036

1024 to 1036
1024 to 1036
1024 to 1036

1024 to 1036
1024 to 1036
1024 to 1036

1024 to 1036
1024 to 1036
1024 to 1036

1024 to 1036
1024 to 1036
1024 to 1036

1024 to 1036
1024 to 1036
1024 to 1036

1024 to 1036
1024 to 1036
1024 to 1036

1024 to 1036
1024 to 1036
1024 to 1036

1024 to 1036
1024 to 1036
1024 to 1036

1024 to 1036
1024 to 1036
1024 to 1036

1024 to 1036
1024 to 1036
1024 to 1036

1024 to 1036
1024 to 1036
1024 to 1036

1024 to 1036
1024 to 1036
1024 to 1036

1024 to 1036
1024 to 1036
1024 to 1036

1024 to 1036
1024 to 1036
1024 to 1036

1024 to 1036
1024 to 1036
1024 to 1036

1024 to 1036
1024 to 1036
1024 to 1036

1024 to 1036
1024 to 1036
1024 to 1036

1024 to 1036
1024 to 1036
1024 to 1036

1024 to 1036
1024 to 1036
1024 to 1036

1024 to 1036
1024 to 1036
1024 to 1036

1024 to 1036
1024 to 1036
1024 to 1036

1024 to 1036
1024 to 1036
1024 to 1036

1024 to 1036
1024 to 1036
1024 to 1036

1024 to 1036
1024 to 1036
1024 to 1036

1024 to 1036
1024 to 1036
1024 to 1036

1024 to 1036
1024 to 1036
1024 to 1036

1024 to 1036
1024 to 1036
1024 to 1036

1024 to 1036
1024 to 1036
1024 to 1036

1024 to 1036
1024 to 1036
1024 to 1036

1024 to 1036
1024 to 1036
1024 to 1036

1024 to 1036
1024 to 1036
1024 to 1036

1024 to 1036
1024 to 1036
1024 to 1036

1024 to 1036
1024 to 1036
1024 to 1036

1024 to 1036
1024 to 1036
1024 to 1036

1024 to 1036
1024 to 1036
1024 to 1036

1024 to 1036
1024 to 1036
1024 to 1036

1024 to 1036
1024 to 1036
1024 to 1036

1024 to 1036
1024 to 1036
1024 to 1036

1024 to 1036
1024 to 1036
1024 to 1036

1024 to 1036
1024 to 1036
1024 to 1036

1024 to 1036
1024 to 1036
1024 to 1036

1024 to 1036
1024 to 1036
1024 to 1036

1024 to 1036
1024 to 1036
1024 to 1036

1024 to 1036
1024 to 1036
1024 to 1036

1024 to 1036
1024 to 1036
1024 to 1036

1024 to 1036
1024 to 1036
1024 to 1036

1024 to 1036
1024 to 1036
1024 to 1036

1024 to 1036
1024 to 1036
1024 to 1036

1024 to 1036
1024 to 1036
1024 to 1036

1024 to 1036
1024 to 1036
1024 to 1036

1024 to 1036
1024 to 1036
1024 to 1036

1024 to 1036
1024 to 1036
1024 to 1036

1024 to 1036
1024 to 1036
1024 to 1036

1024 to 1036
1024 to 1036
1024 to 1036

1024 to 1036
1024 to 1036
1024 to 1036

1024 to 1036
1024 to 1036
1024 to 1036

1024 to 1036
1024 to 1036
1024 to 1036



KE Buelow

20
21

12 C.R.
Δ 46-53
ST=2070
R=4775
LC=390.7

12° C.R.
Δ=54°17'
ST=2448
LC=452±

Pacific Power & Light Co

Equation 1057+90 Bank
= 1057+505±

Equation 1062+395 Bank
= 1062+502 P.C.

Error in Chaining Location
Sta 1060+75/1061 = 23'

Pacific Power & Light Co

Red Line X-sec Fin
1055-1064

Pacific Power & Light Co

4F9-8 SEC 1
Sh. 12 T2NR10E

SEC 36
T3NR10E

Finish Sta
Sta 1075-
X-sec on

Equation 1082+483 P.T.
1082+61 P.T.

28° C.L.
Δ=57°53'
ST=1133
LC=2070

24° C.R.
Δ=34°48'
ST=748
LC=1450

