

Mt. Hood Loop Hwy. 1925
Constructed Line
H.R. → Forest Bdy.

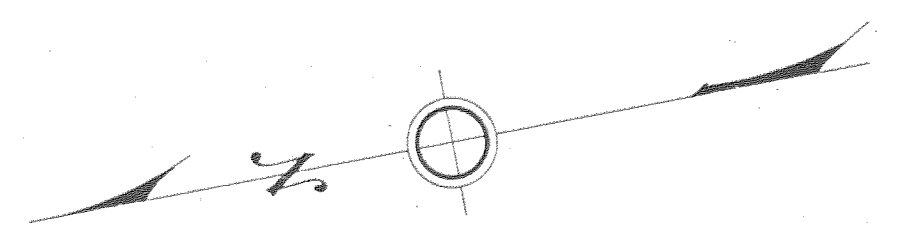
OREGON STATE HIGHWAY DEPARTMENT
(Constructed Line)
HOOD RIVER TO FOREST BOUNDARY
MOUNT HOOD LOOP HIGHWAY
HOOD RIVER COUNTY

Scale 1 in. = 400 ft. August 1925

DRG. No. 2B17-13



NOTE: All Bench Mark elevations shown on this map are in accordance with U.S. Std. 1924 adjustment.



C O L U M B I A
R I V E R





D-1035-25



VAN HORN

Leonak Roberts

C.T. Roberts

John Mohr

PH. Mohr & Bros.

J.R. Numamaker

J.H. Day

J.R. Nun

C. Sexton

M. M. Hill

J.L. Davis

Wilson Tike

Fike

J.D. McCuley

John Mohr

MT. HOOD R.R.

Geo. & Nellie Smith

Chas. A. Sproat

Ralph Root

C.K. & E.H. Benton

Mary T. Hoyt

W.C. & Henrietta Keck

Crescent Fruit Co.

Helen S. Van Horn

Neat Creek

Equation Creek

Paasch

Martha Herschner

John L. Herschner

Wm. & C. Parmlee

B.M. El. 619.912
Bronze Tablet in
S.W. cor. Br. post

0°30' C.R.
Δ 0°31'
T. 511.7

N. 0°25' E.

N. 0°56' W.

N. 2°27' E.

N. 3°06' W.

N. 3°06' W.

94°18.2' E.T.

94°17.7' S.P.C.

6° C. R.
Δ 14° 05'
T. 118.6

91° 20.5' E.

91° 22.4' E.T.

91° 20.5' E.

91° 22.4' E.T.

91° 20.5' E.

91° 22.4' E.T.

91° 20.5' E.

91° 22.4' E.T.

91° 20.5' E.

91° 22.4' E.T.

91° 20.5' E.

91° 22.4' E.T.

91° 20.5' E.

91° 22.4' E.T.

91° 20.5' E.

91° 22.4' E.T.

91° 20.5' E.

91° 22.4' E.T.

91° 20.5' E.

91° 22.4' E.T.

91° 20.5' E.

91° 22.4' E.T.

91° 20.5' E.

91° 22.4' E.T.

91° 20.5' E.

91° 22.4' E.T.

91° 20.5' E.

91° 22.4' E.T.

91° 20.5' E.

91° 22.4' E.T.

91° 20.5' E.

91° 22.4' E.T.

91° 20.5' E.

91° 22.4' E.T.

91° 20.5' E.

91° 22.4' E.T.

91° 20.5' E.

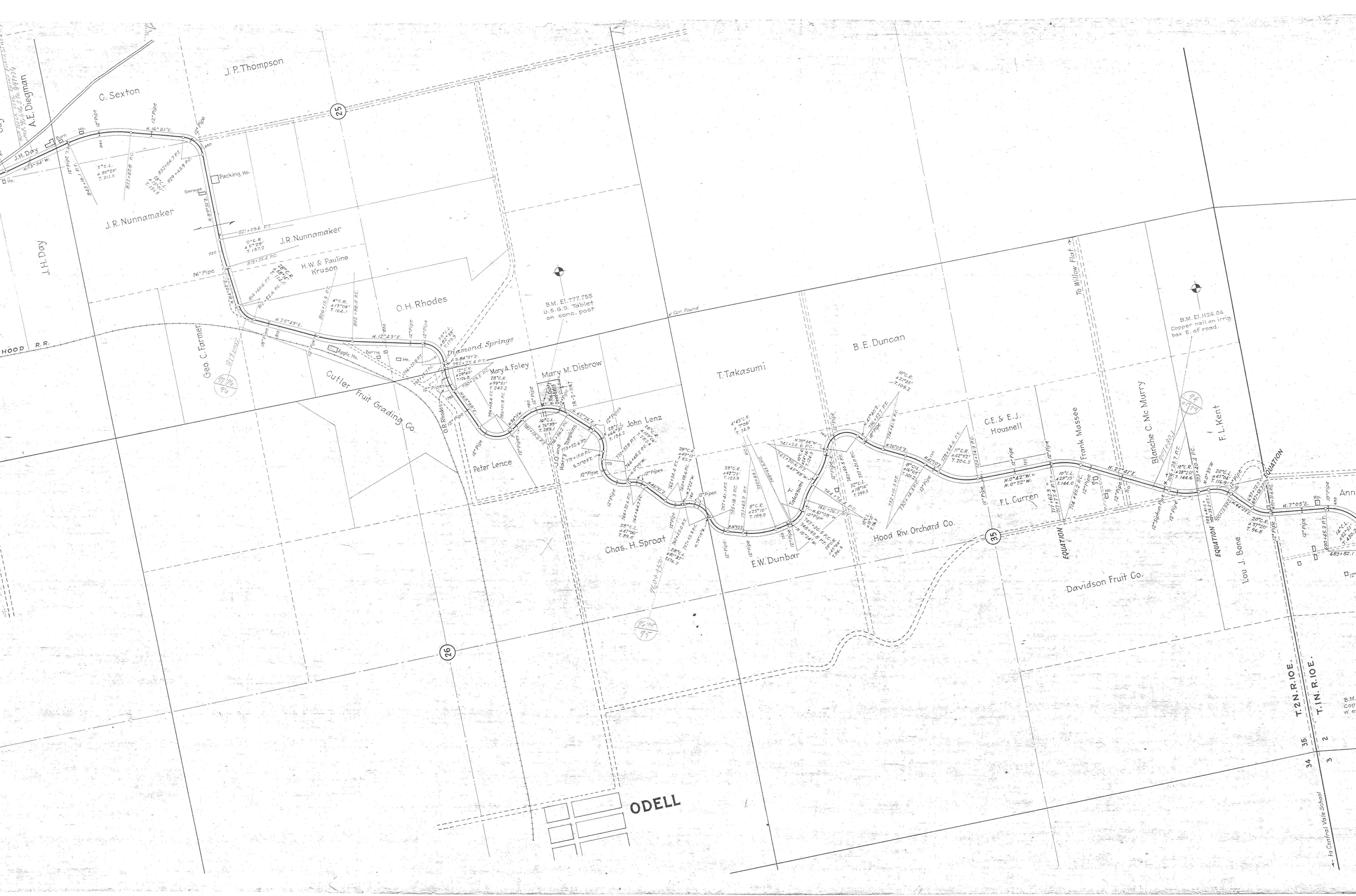
91° 22.4' E.T.

91° 20.5' E.

91° 22.4' E.T.

14

23



J.P. Thompson

G. Sexton

25

A.E. Diegman

J.R. Nunnamaker

Packing Ho.

J.H. Day

J.R. Nunnamaker

H.W. & Pauline Kruson

HOOD R.R.

Geo. C. Farmer

O.H. Rhodes

B.M. El. 777.755
U.S.G.S. Tablet
on conc. post

Diamond Springs

B.E. Duncan

T. Takasumi

Cutler Fruit Grading Co.

Mary A. Foley

Mary M. Disbrow

John Lenz

Peter Lence

Chas. H. Sproat

E.W. Dunbar

Hood Riv. Orchard Co.

G.E. & E.J. Housnell

F.L. Curran

Frank Massea

Blanche C. Mc Murty

F.L. Kent

B.M. El. 1124.04
Copper nail on irrig.
box E. of road.

Davidson Fruit Co.

Lou J. Bone

26

35

T. 2N. R. 10E.

T. 1N. R. 10E.

ODELL

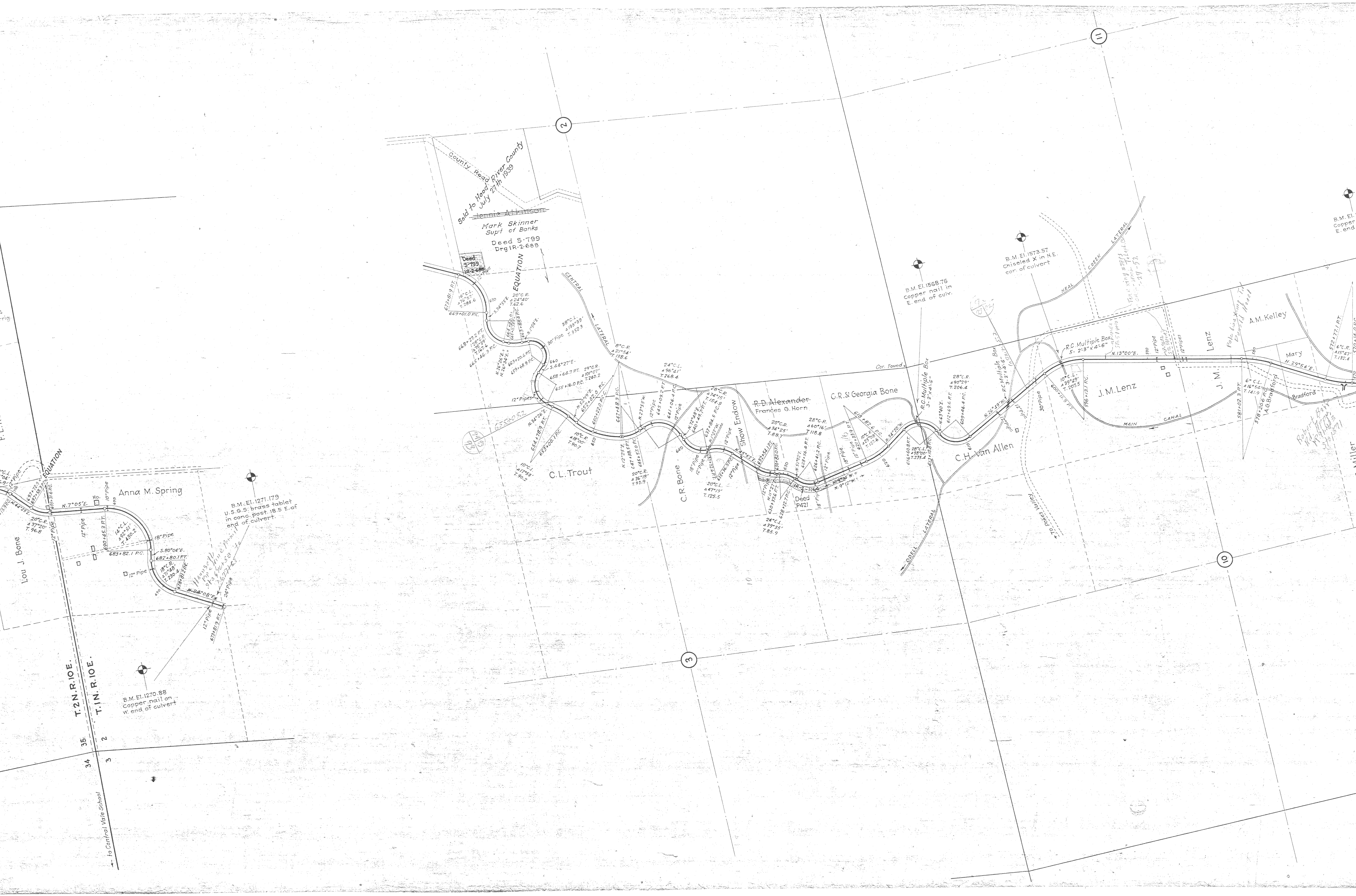
To Central Vale School

34

35

2

3



Sold to Hood River County
Mark Skinner
Supt of Banks
Deed S-799
Drg IR-2-688

Anna M. Spring
Lou J. Bone
B.M. El. 1270.88
Copper nail on
W. end of culvert

B.M. El. 1271.179
U.S.G.S. brass tablet
in conc. post 18.5 E. of
end of culvert.

B.M. El. 1566.76
Copper nail in
E. end of culv.

B.M. El. 1573.57
Chiseled X in N.E.
cor. of culvert

T. 2N. R. 10E.
T. 1N. R. 10E.

35
2
34
3

2

3

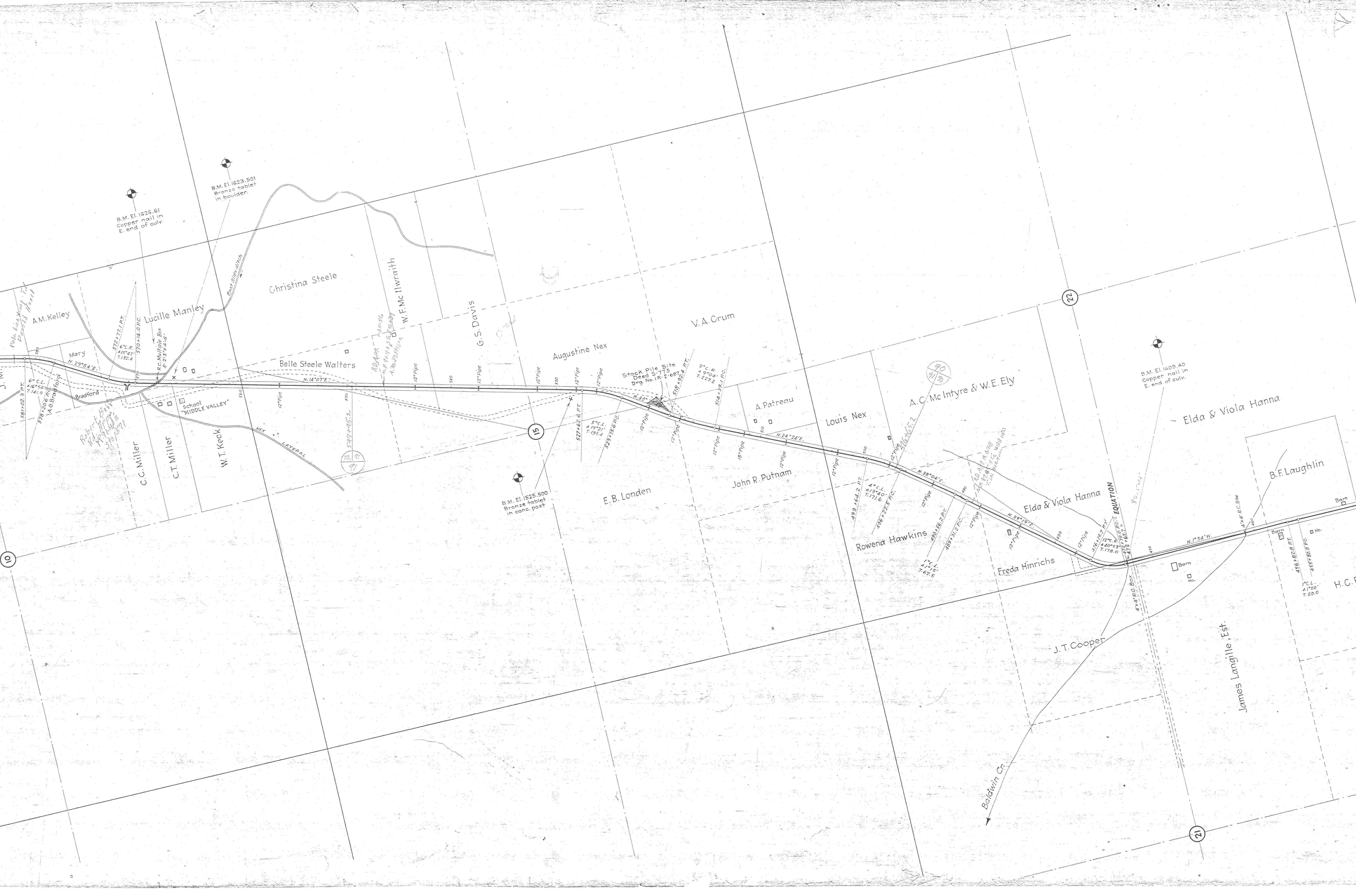
11

10

To Central Vale School

Robert Bay
Miller

B.M. El.
Copper
E. end





MT HOOD

28-17-13

Viola Hanna
B.F. Laughlin

Wm. Rush

Paul Auber

Josephine Vauthers

Clarissa Welch

Laura Winsler

B.M. El. 1531.67
Copper nail on top
of irrig. box E. of Hwy.

B.M. El. 1516.68
Copper nail on irrig.
box E. of Highway

B.M. El. 1467.362
Tablet in conc.
post.

James Langille, Est.

H.C. Rush

Geo. W. Combs

W.T. & W. Wyatt

T.H. Lorwood

D.R. & Marion Cooper

Delbert

Alice

J. Mc. Combs &

B.M. El. 1535.11
Nail in Br curb
N. end of Br.

Geo. Platt

B.M. El. 1534.173
Tablet in Br curb
S. end of Br.

Chas. T. Rawson

Albert Mc Kamey

M.L. Allen

Mary A. Gilbert

M.L. Allen

B.M. El. 1701.83
Chiseled x on
W. end of culv.

B.M. El. 1752.210
Tablet on slip
box W. of Hwy.

FORK HOOD RIVER

T. 10. R. 10. E.
T. 15. R. 10. E.

LINE

28-17-13



HOOD RIVER
T.1N. R.10E.
T.1S. R.10E.

5

8

Evans
Creek

WILLAMETTE BASE LINE
HOOD RIVER COUNTY

Mary A. Gilbert
12" Pipe 22720
12" Pipe 22720
12" Pipe 22720
12" Pipe 22720

Emery E. Ross
Hugh E. Ross

Hood River County
Deed S-816
Drg No. 1R-2-686
0.71 AC

Butler Baking Co.
60 RW BK. 16 @ 1/4
MARCH 15 1922

B.F. Gray
60 RW BK. 15 @ 1/4
NOV. 12 1921

F.B. Schmidt
J. LISEN
30 RW BK. 15 @ 1/4
NOV. 12 1921

Babson Bros.
30 RW BK. 15 @ 1/4
NOV. 12 1921

Harry Hutson
30 RW BK. 16 @ 1/4
4-5-22

Lillian P. Hutson
30 RW BK. 16 @ 1/4
MAY 18 1905

Albert Hutson
30 RW BK. 16 @ 1/4
MAY 18 1905

W.H. Toby
30 RW BK. 15 @ 1/4
NOV. 12 1921

J.D. Gordon
30 RW BK. 15 @ 1/4
NOV. 12 1921

Chas. T. Moody
30 RW BK. 15 @ 1/4
FEB. 7 1922

C.P. & S.A. JOHNSON
NOV. 12 1921
NOTE: BOTH DEEDS

MAIN SITE
Deed M-153
(R-1-401)

HOOD RIVER HWY. NO. 281
1/2 MI. to Parkdale

B.M. El. 1809.20
Chiseled X on
N.E. Cor. of culv.

B.M. El. 1810.47
Chiseled X on
S.E. cor. of culv.

B.M. El. 1829.74
on N.W. cor.
of culv.

B.M. El. 2005.90
Chiseled X on top
of siphon box w.
of highway

6

7



B.M. El. 2251.54
Chiseled X on
E. end of culv.

Geo. E. & Amanda N. Pines
60' R/W BK. 13 @ 281
W.C. SMITH BK. 13 @ 281
60' R/W BK. 13 @ 281
APRIL 13, 1921

Stock PILE SITE
18x24 FT.
DIED 5-11-12
O. 9-1-16

W.N. Shearer
60' R/W BK. 16 @ 443
DEC. 1, 1921

Roy Shearer
W.A. SHOLEN
60' R/W BK. 16 @ 302

G.W. Blodgett
60' R/W BK. 15 @ 337
NOV. 12, 1921

B.M. El. 2510.382
Aluminum tablet on
N.W. cor. of siphon box
E. side of Hwy.

B.M. El. 2552.35
Chiseled square
N.W. cor. of culv.

B.M. El. 2607.34
Chiseled □
S.W. cor. of culv.

B.M. El. 2638.02
Chiseled □
S.W. cor. of culv.

B.M. El. 2669.53
Chiseled □ in
N.W. cor. of culv.

B.M. El. 2737.63
Chiseled □ in
W. end of culv.

Mark Weygand
60' R/W BK. 17
FEB. 9, 1921

Security Savings & Trust Co.
60' R/W BK. 17
FEB. 5, 1921

Frank Powers
EUGENE C. EDWIER
60' R/W BK. 14 @ 100
FEB. 1, 1922

G.H. & Carrie Monroe
60' R/W BK. 16 @ 285
APR. 10, 1922

E.A. Brown
60' R/W BK. 15 @ 550
NOV. 12, 1921

J.F. Candee
60' R/W BK. 16 @ 559
MARCH 2, 1922
LETTER IN FILE

Chas. Laakey
60' R/W BK. 16 @ 559
SEPT. 29, 1922

H.M. Waltey
60' R/W BK. 15 @ 551
NOV. 12, 1921

B.M. El. 2142.76
Chiseled □ on
N.W. cor. of culv.

B.M. El. 2313.17
Chiseled □ on
N.W. cor. of culv.

B.M. El. 2363.51
Chiseled □ on
cor. of culv.

B.M. El. 2736.159
U.S.G.S. Aluminum tablet
in boulder.

1" = 40'

69.53
D
of culv.

B.M. El. 2737.63
Chiseled \square in
W. end of culv.

B.M. El. 3006.52
Copper nail in root
of fir tree

B.M. El. 3164.56
Chiseled X on
E. end of culvert

B.M. El. 3333.64
 \square on W. headwall
of culvert

Mark Weygant
60' R/W BK. 17 PAGE 74
FEB. 9, 1923
2' RIGHT-OF-WAY DEED

60' R/W BK. 17 PAGE 121
MARCH 5, 1923
Joe Erwin

Elmer P. Adams
D.E. Johnson

H. L. Perkins
60' R/W DE-WAY
BK. 17 PAGE 75
FEB. 10, 1923

Mrs. A.C. Moody
60' R/W DE-WAY 30' ON EACH
SIDE OF R. (HARKL)
BK. 17 DEEDS PAGE 125
MARCH 12, 1923

Security Savings & Trust Co.
60' R/W BK. 17 PAGE 631
FEB. 5, 1924

Upper Valley
Orchard Co.

G.J. Stark-Est.
H.P. NOOZE
60' R/W BK. 17 @ 157
MARCH 23, 1923

R.10E.
R.9E.

T.1S.
T.2S.

Hood River to Forest Bdy. Sec.
DRG. No. 2B17-13

