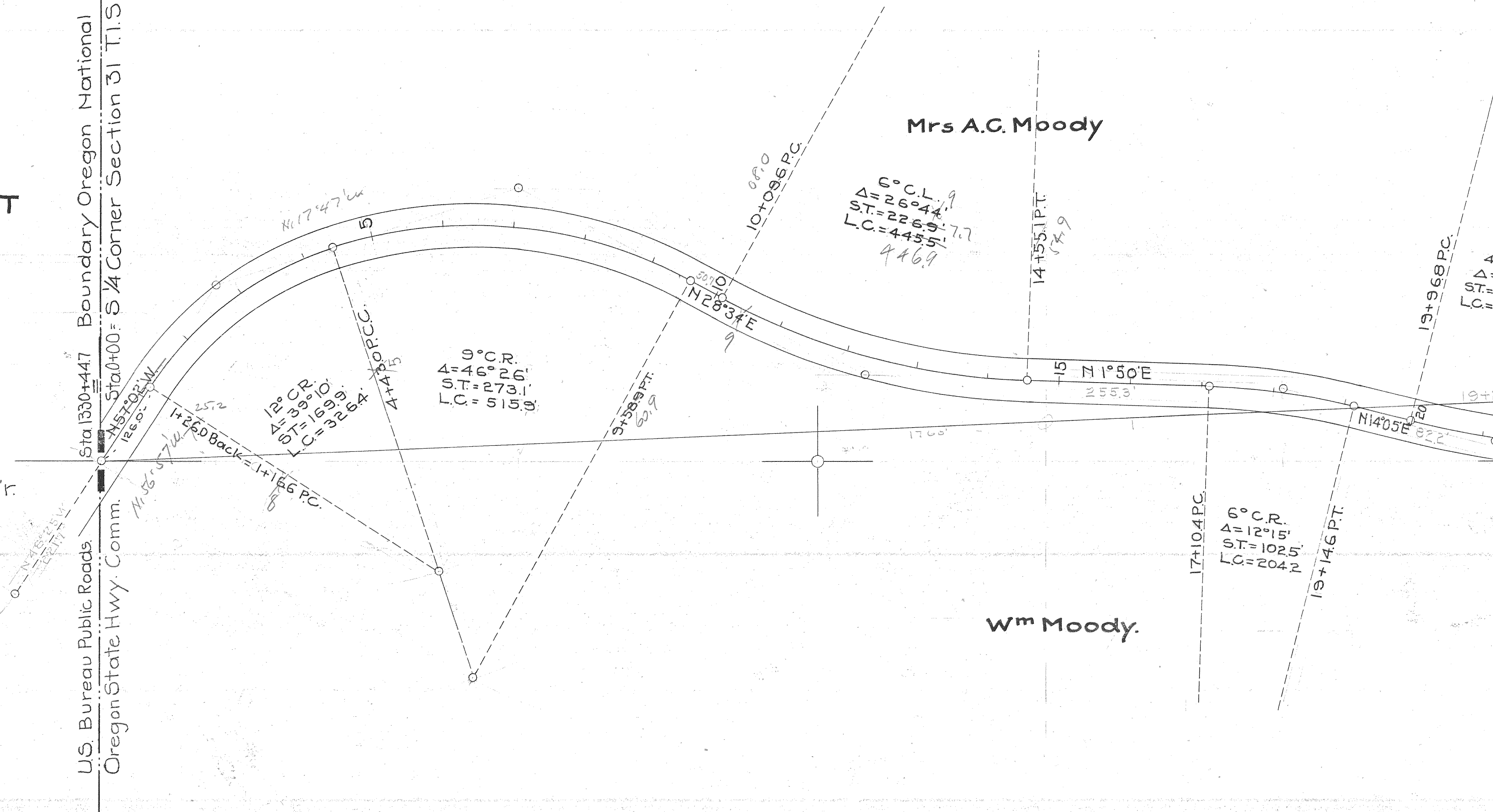
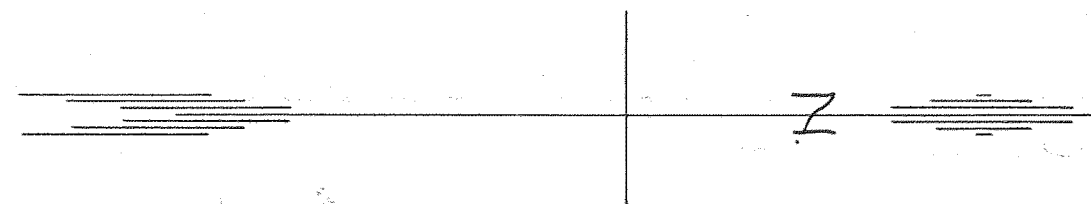


**OREGON STATE HIGHWAY DEPARTMENT**  
**Constructed Line**  
**Mt. Hood Loop Highway**  
**Hood River-Forest Boundary Section**  
**Hood River County**

Sta. 0+00 to Sta 16+210 = 87+091 to Sta 112.  
 In Sections 31-30 & 19 T.1.S.R.10E.W.M.  
 Construction begun April 20, 1922.  
 Scale 1"=100'. Const completed Aug 10, 1923.  
 C.C. Seelÿ, Res. Eng'r.

U.S. Bureau Public Roads  
 Oregon State Hwy Comm.  
 Boundary Oregon National Forest  
 Sta 1330+447  
 Sta 0+00 = S ¼ Corner Section 31 T.1.S.R.10E.W.M.



Mrs A.C. Moody

Wm Moody

6° C.L.  
 $\Delta = 26^\circ 44'$   
 S.T. = 226.9  
 L.C. = 445.5  
 446.9

12° C.R.  
 $\Delta = 39^\circ 10'$   
 S.T. = 169.9  
 L.C. = 322.64

9° C.R.  
 $\Delta = 46^\circ 26'$   
 S.T. = 273.1  
 L.C. = 515.9

6° C.R.  
 $\Delta = 12^\circ 15'$   
 S.T. = 102.5  
 L.C. = 204.2

4°  
 $\Delta =$   
 S.T. =  
 L.C. = 2

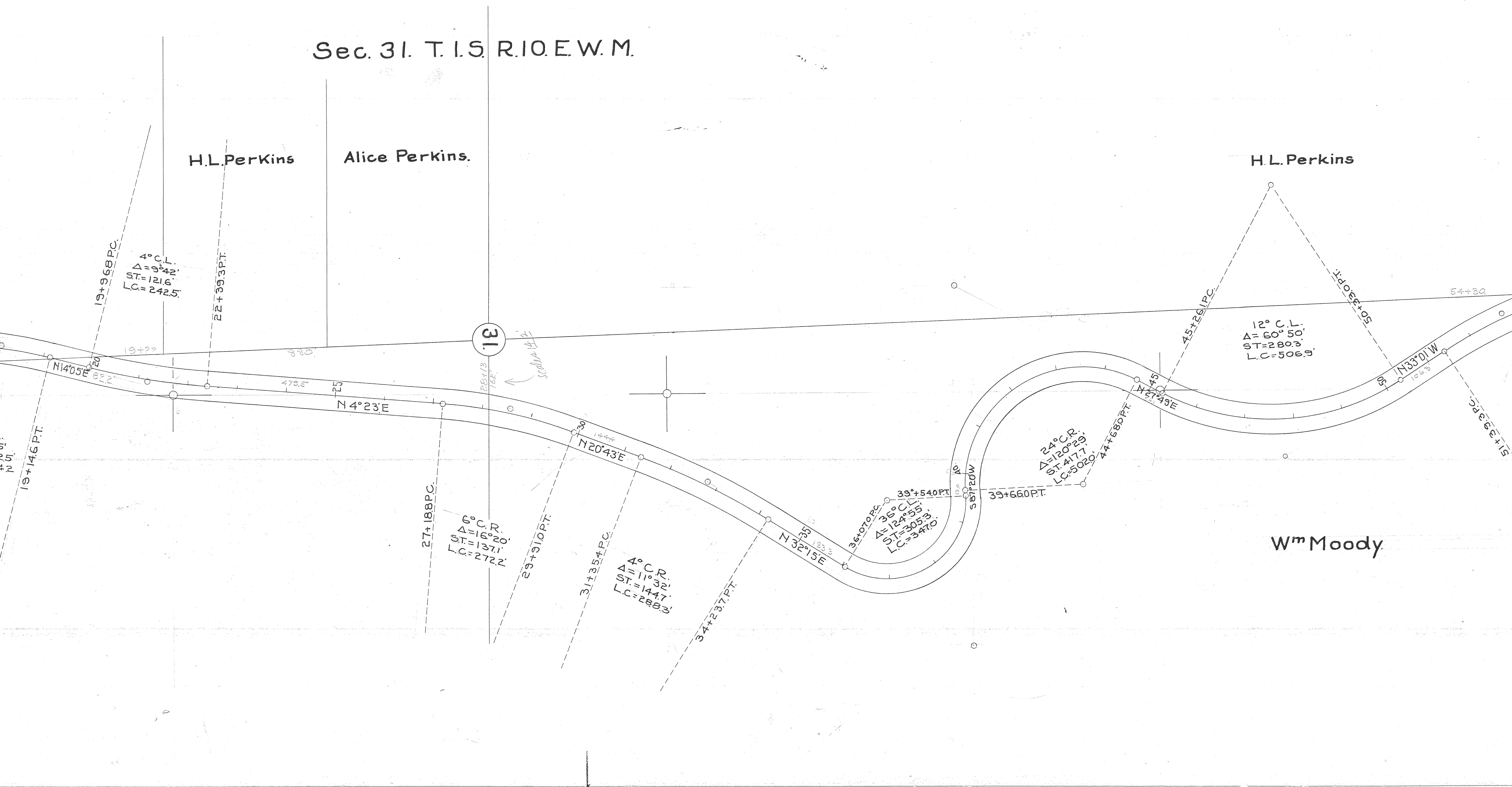
Sec. 31. T. 15. R. 10. E. W. M.

H.L. Perkins

Alice Perkins.

H.L. Perkins

W<sup>m</sup> Moody

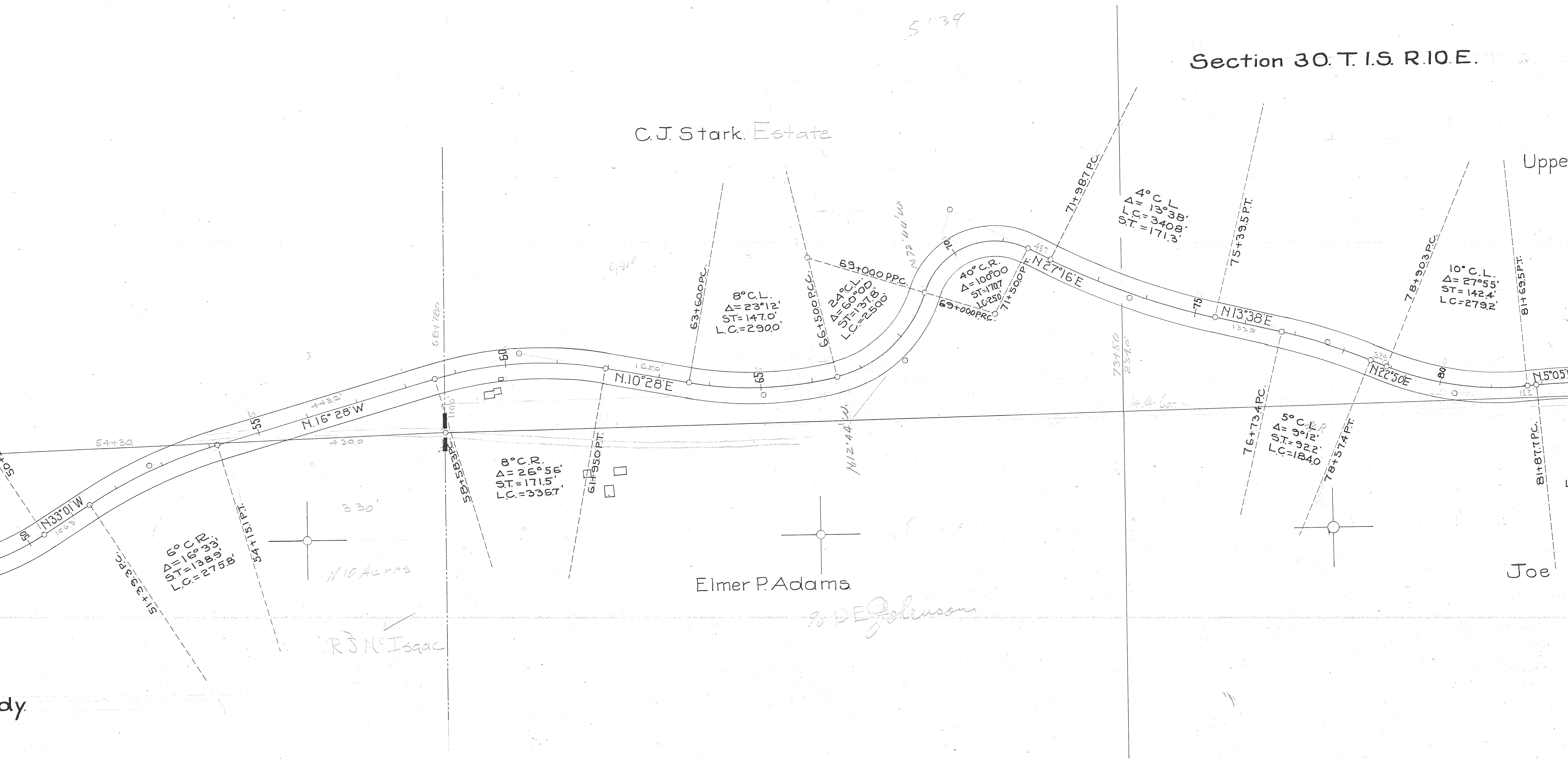


Section 30. T.1.S. R.10.E.

C.J. Stark Estate

Upper

Joe



5139

4500

1/4 Cor.

60° C.L.  
 $\Delta = 168^{\circ}33'$   
 $ST = 1389.9'$   
 $LC = 2758'$

8° C.L.  
 $\Delta = 26^{\circ}56'$   
 $ST = 171.5'$   
 $LC = 336.7'$

8° C.L.  
 $\Delta = 23^{\circ}12'$   
 $ST = 147.0'$   
 $LC = 290.0'$

24° C.L.  
 $\Delta = 137^{\circ}00'$   
 $ST = 137.0'$   
 $LC = 250.0'$

40° C.L.  
 $\Delta = 100^{\circ}00'$   
 $ST = 170.7'$   
 $LC = 230.0'$

4° C.L.  
 $\Delta = 13^{\circ}38'$   
 $LC = 340.8'$   
 $ST = 171.3'$

5° C.L.  
 $\Delta = 9^{\circ}12'$   
 $ST = 92.2'$   
 $LC = 184.0'$

10° C.L.  
 $\Delta = 27^{\circ}55'$   
 $ST = 142.4'$   
 $LC = 279.2'$

N 10 Acres

Elmer P. Adams

9% DE Johnson

R J N Isaac

dy

R.10.E.

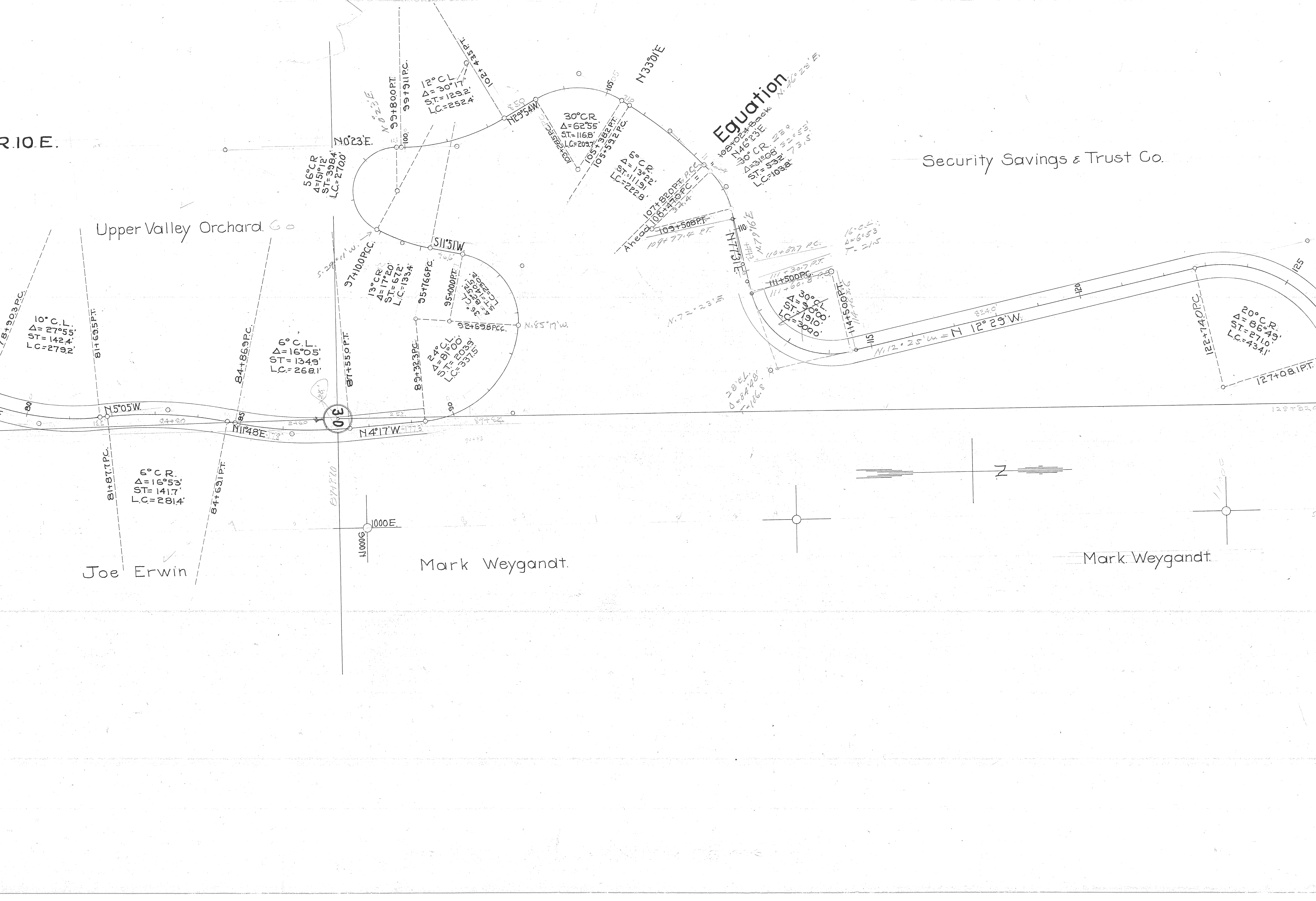
Security Savings & Trust Co.

Upper Valley Orchard.

Joe Erwin

Mark Weygandt.

Mark Weygandt.





Section 19. T. 15. R. 10. E.

Section 30.

August C. Hageman  
Mt Hood Lodge Co.

20° C.L.  
Δ=86° 49'  
ST=2710.  
LC=4341'

20° C.L.  
Δ=40° 00'  
ST=1043.3  
LC=2000'

30° C.L.  
Δ=76° 30'  
ST=1506.30  
LC=2550'

20° C.L.  
Δ=40° 00'  
ST=1043.3  
LC=2000'

14° C.L.  
Δ=23° 38'  
ST=856.  
LC=1688'

20° C.L.  
Δ=107° 37'  
ST=391.6  
LC=5381'

N 1/4 Corner Sec. 30  
S 1/4 Corner Sec. 19

1000E  
12000E

2000E  
11000N

2000E  
12000N

155

N 26° 51' E

ndt.

132+36

N 74° 20' E

N 34° 20' E

N 34° 10' E

S 69° 10' E

S 45° 32' E

127+08.1 P.T.

N 74° 20' E

133+79.8 P.C.

135+79.8 P.T.

138+54.5 P.C.

141+03.5 P.T.

144+72.9 P.C.

146+41.7 P.T.

147+41.4 P.C.

152+79.5 P.T.

125

11000N  
1000E

20

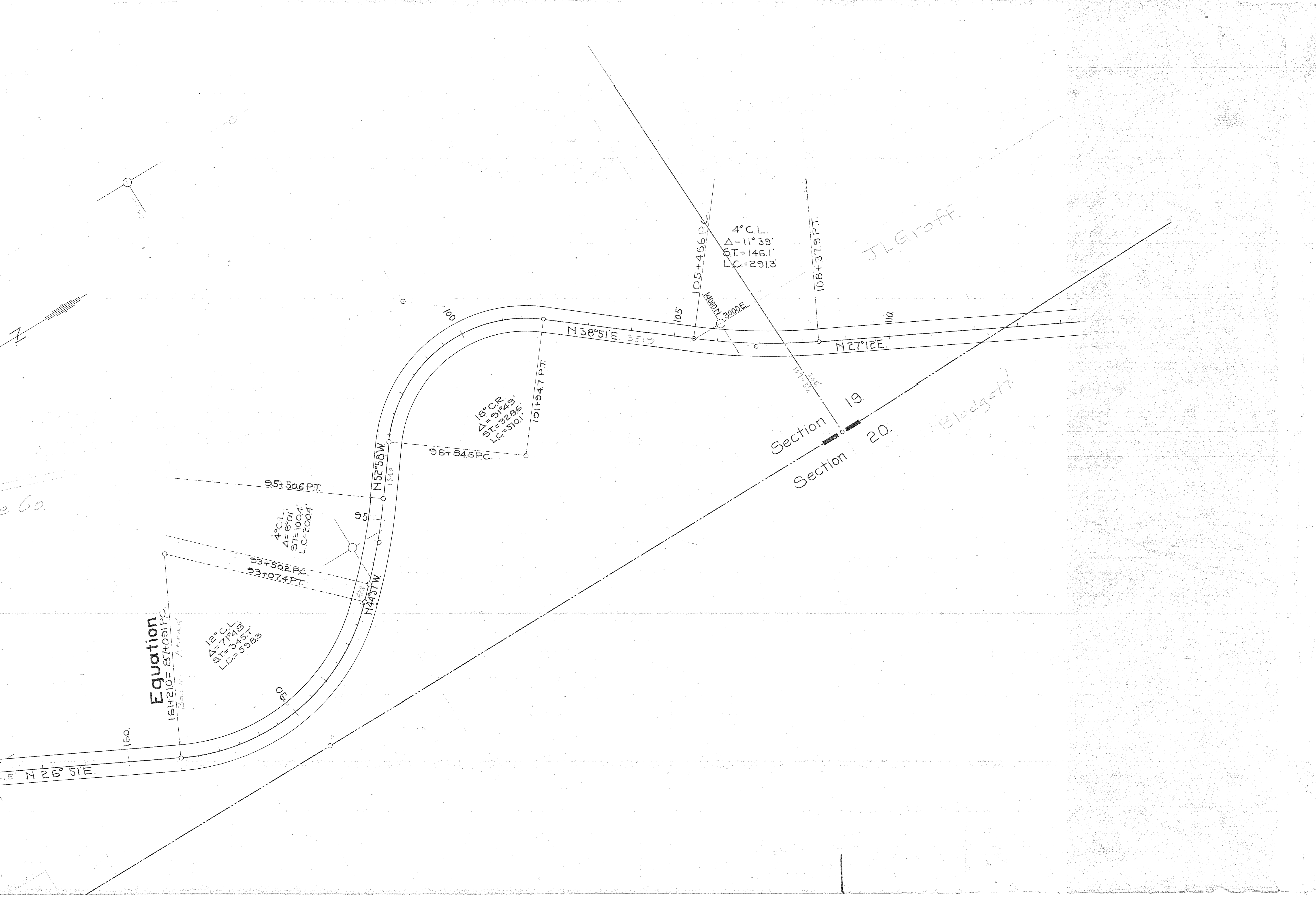
140

145

150

160





Equation

$164 \pm 210 = 87 \pm 091 \text{ PC.}$

Back Ahead

12° C.L.  
 $\Delta = 77^\circ 40'$   
 $ST = 3457'$   
 $LC = 5983'$

4° C.L.  
 $\Delta = 8^\circ 01'$   
 $ST = 1004'$   
 $LC = 2004'$

15° CR  
 $\Delta = 91^\circ 40'$   
 $ST = 3286'$   
 $LC = 5101'$

4° C.L.  
 $\Delta = 11^\circ 39'$   
 $ST = 1461'$   
 $LC = 2913'$

JL Groff

Blodgett

Section 19

Section 20

N 26° 51' E

N 38° 51' E 351.9

N 27° 12' E

N 52° 58' W

N 44° 37' W

105+466 PC

14000 N 3000 E

108+37.9 PT

101+94.7 PT

96+84.6 PC

95+50.6 PT

93+50.2 PC  
 93+07.4 PT

160

90

95

100

105

110