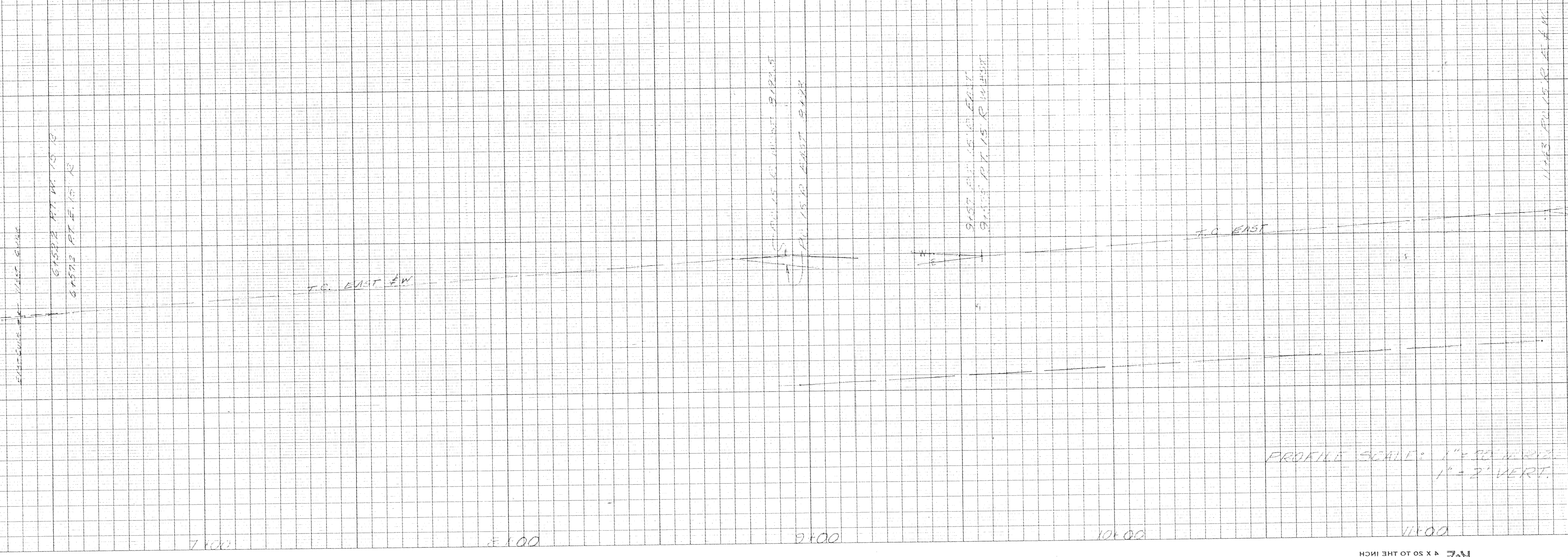


NOTE: Water Mains, Services & Appurtenances by City.
 Pole Relocation by Others.
 PRIOR TO DIG CONTACT: N.W. Natural Gas
 City Water Dept.
 Warner Cable Co.
 United Telephone Co. } 386-4505

PRELIMINARY

495
494
493
492
491
490
489
488
487
486
485



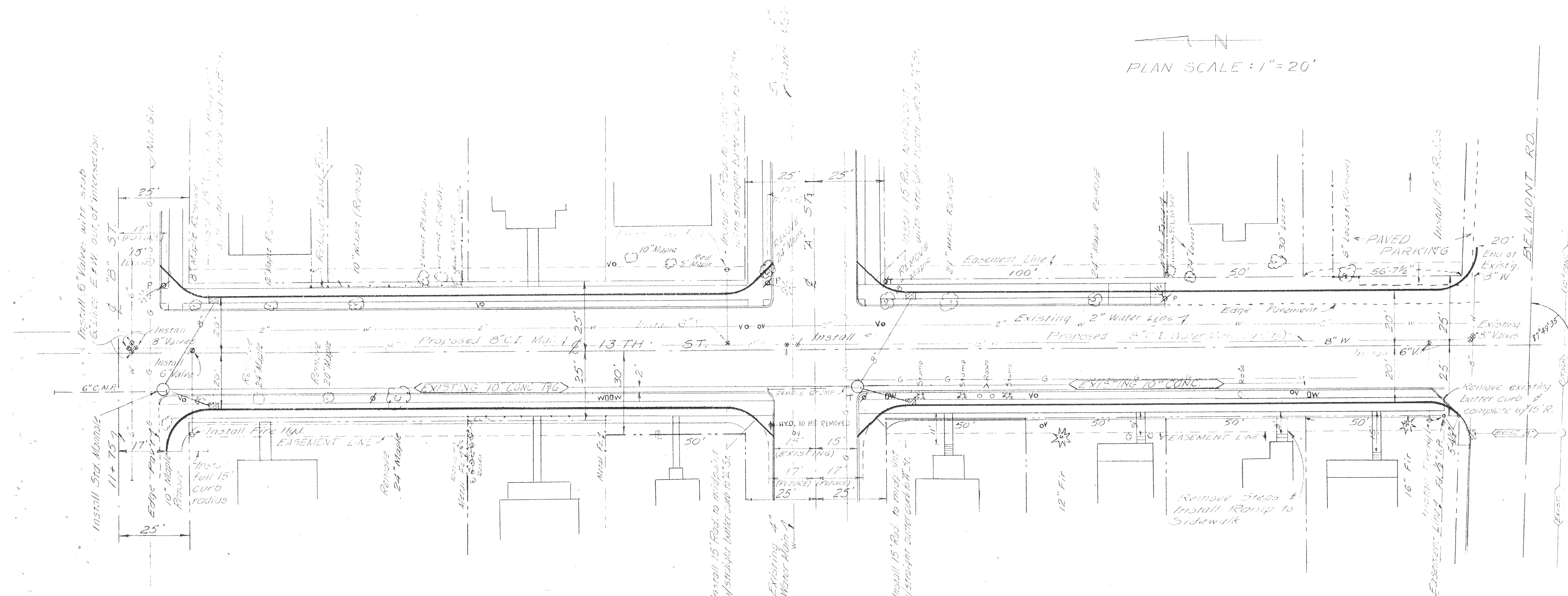
DATE	NO.	REVISION	BY
CITY OF HOOD RIVER OFFICE OF THE CITY ENGINEER HOOD RIVER, OREGON			
13TH STREET WIDENING TAYLOR TO BELMONT PRELIMINARY			
DESIGNED	DATE	APPROVED BY	SCALE
TRACED	DATE	SEAL	AS SHOWN
CHECKED	DATE	FILE	Sh. 113.13 12.12

K&E
KENNELL & EBER CO.
ENGINEERS & ARCHITECTS
HOOD RIVER, OREGON

K&E
KENNELL & EBER CO.
ENGINEERS & ARCHITECTS
HOOD RIVER, OREGON

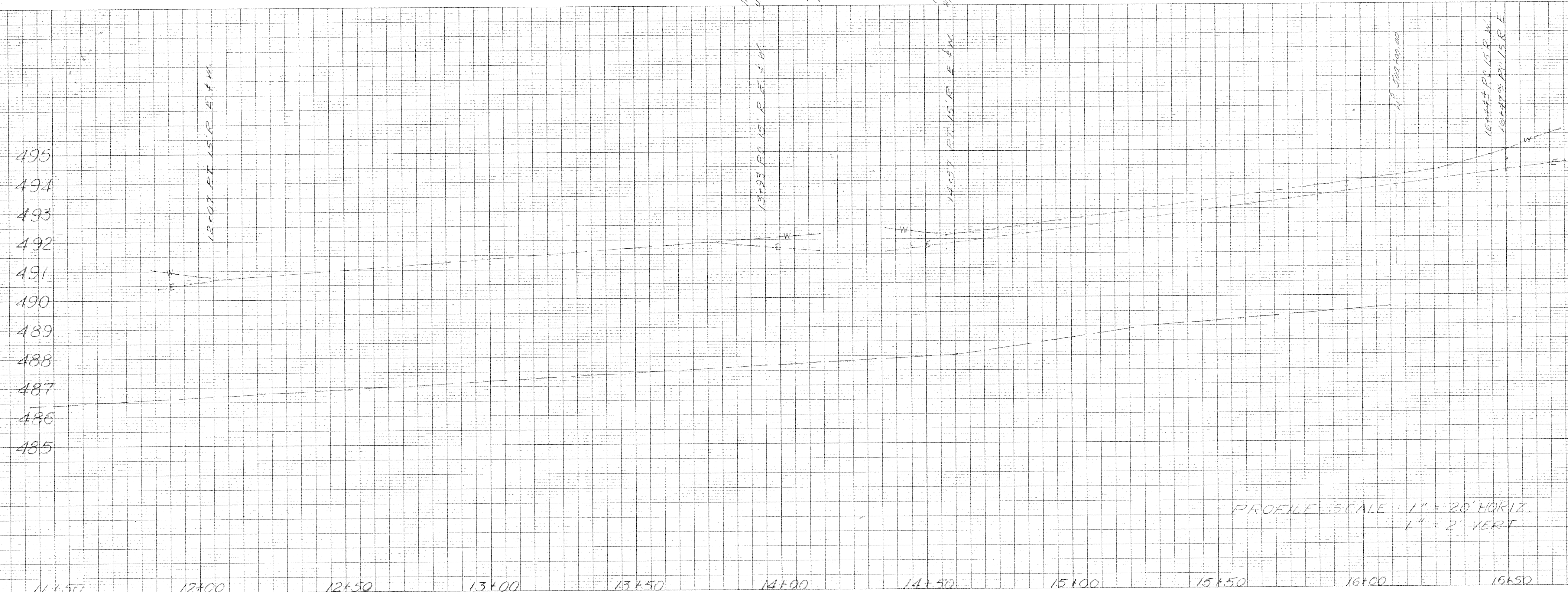
D-281-79

5/11/13



PLAN SCALE: 1" = 20'

PRELIMINARY



PROFILE SCALE: 1" = 20' HORIZ
1" = 2' VERT

DATE	NO.	REVISION	BY
CITY OF HOOD RIVER OFFICE OF THE CITY ENGINEER HOOD RIVER, OREGON			
13TH STREET WIDENING TAYLOR TO BELMONT			
PRELIMINARY			
DESIGNED	DATE	APPROVED BY	SCALE
TRACED	DATE	FILE	2
CHECKED	DATE	FILE	2

D-281-79

PRINTED IN U.S.A. BY KENTLER & EBER CO. 4 X 50 TO THE INCH

PRINTED IN U.S.A. BY KENTLER & EBER CO. 4 X 50 TO THE INCH

OREGON DEPARTMENT OF TRANSPORTATION

BELMONT ST. - HOOD RIVER HWY.

13th STREET
CITY OF HOOD RIVER

HEARINGS - Oregon North Zone

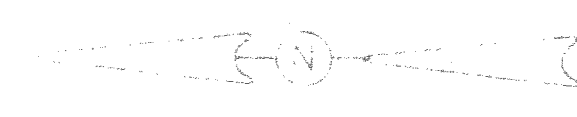
R. R. Cameron

COORDINATES = Assumed

Resident Engineer

MAY 1980

Scale 1" = 50'



12th STREET
E 5000

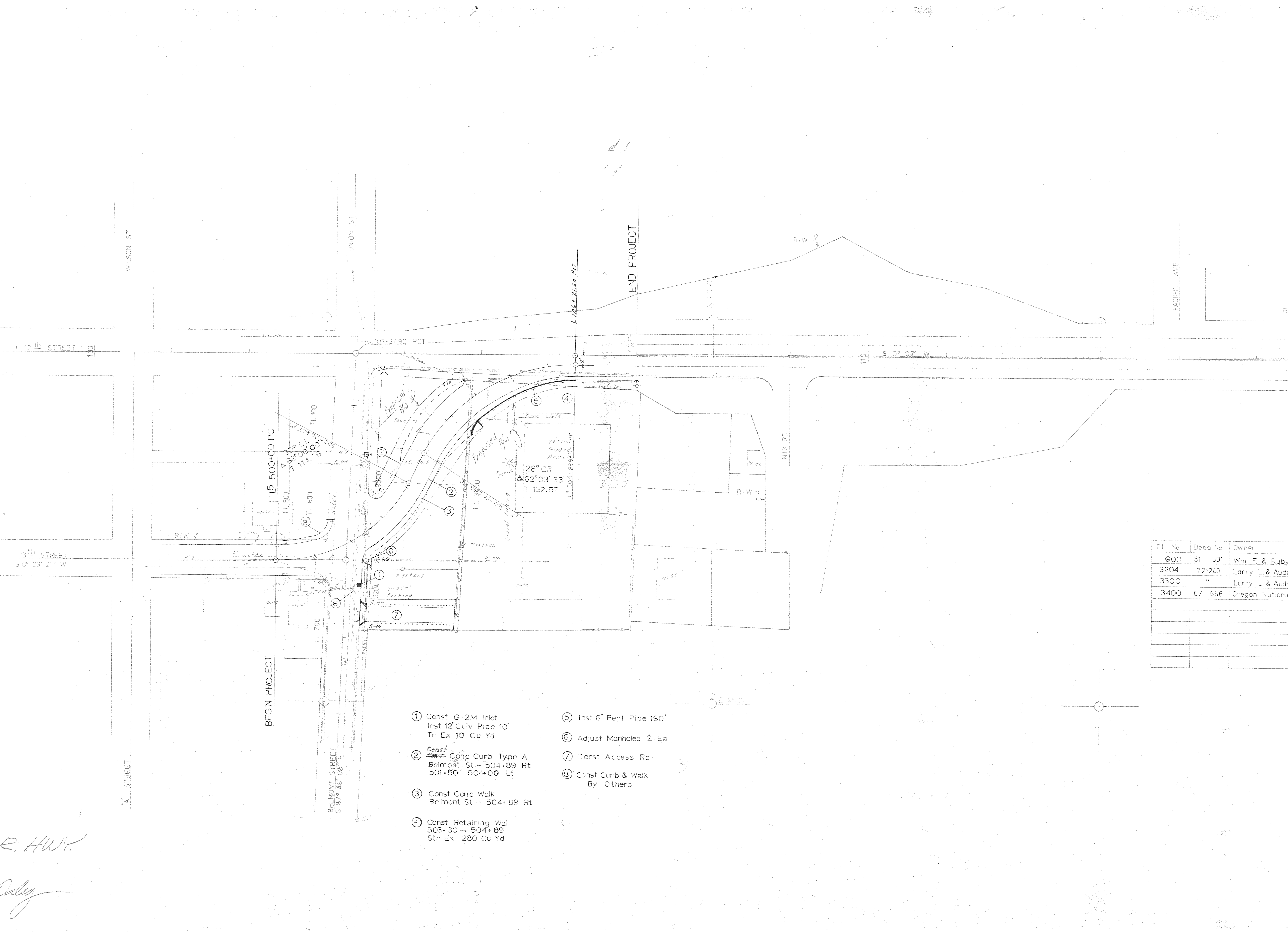
12th STREET

13th STREET
S 0° 03' 27" W

copy of map
13th St
12th St
13th St
12th St
13th St
12th St

Map 281
13th St
12th St
13th St
12th St
13th St
12th St

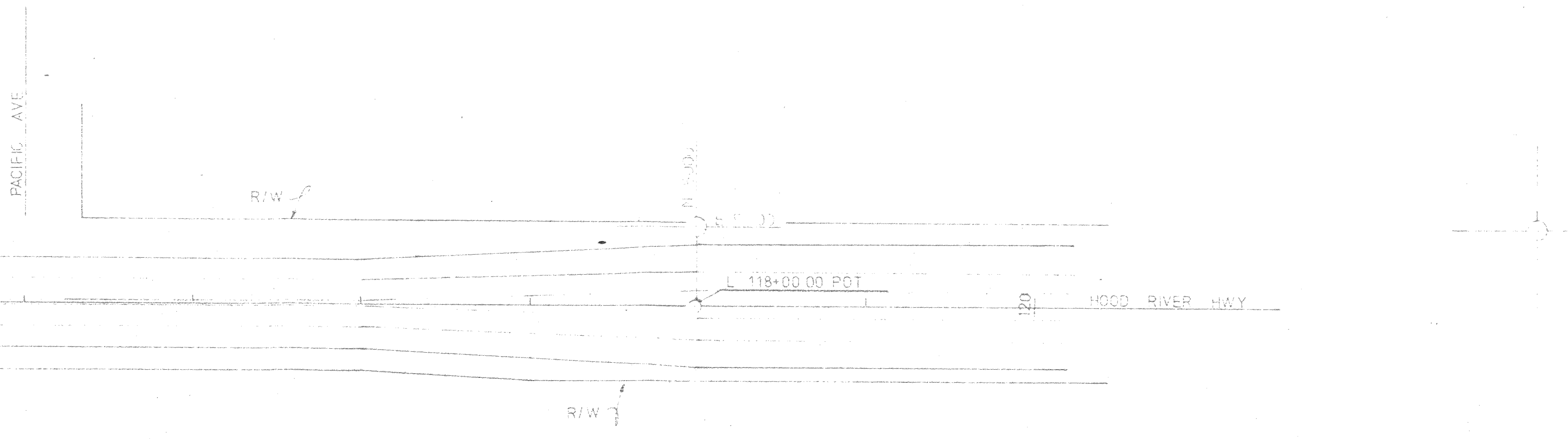
BELMONT ST - H.R. HWY.
D-281-1980
Raley



TL No	Deed No	Owner
600	61 501	Wm. F. & Ruby
3204	721240	Larry L. & Aud
3300	"	Larry L. & Aud
3400	67 656	Oregon National

- ① Const G-2M Inlet
Inst 12" Culv Pipe 10'
Tr Ex 10 Cu Yd
- ② Const ~~Inst~~ Conc Curb Type A
Belmont St - 504+89 Rt
501+50 - 504+00 Lt
- ③ Const Conc Walk
Belmont St - 504+89 Rt
- ④ Const Retaining Wall
503+30 - 504+89
Str Ex 280 Cu Yd
- ⑤ Inst 6" Perf Pipe 160'
- ⑥ Adjust Manholes 2 Ea
- ⑦ Const Access Rd
- ⑧ Const Curb & Walk
By Others

R. HWY.
Daley



L No	Deed No	Owner
600	51 501	Wm. F. & Ruby E. Paddock
3204	721240	Larry L. & Audrey E. Fisher
3300	"	Larry L. & Audrey E. Fisher
3400	67 656	Oregon National Guard

HWY 281 1980
13th St. Complete

For more info - 12 months
to 1/1/81
1/1/81
1/1/81

BELMONT ST-HOOD RIVER HWY.

OREGON DEPARTMENT OF TRANSPORTATION

13th STREET
CITY OF HOOD RIVER

DESIGNED: Oregon North Zone

R. R. Cameron

MAY 1980

Scale 1" = 50'

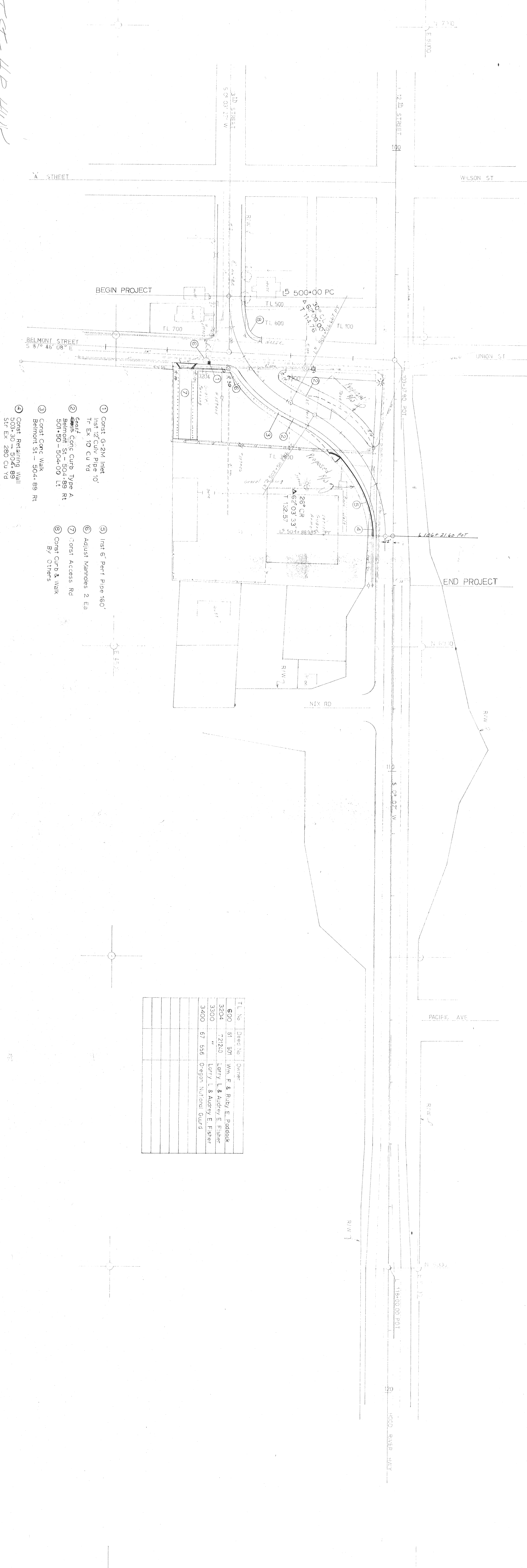
COORDINATES - Assumed

Resident Engineer

BELMONT ST - H.R. HWY.

D-281-1980

[Signature]



- 1) Const. 6" DIA. Inlet of
1st 6" Part Pipe 160'
- 2) Const. Curb Type A
Belmont St - 504+89 RT
501+90 - 504+90 LT
- 3) Const. Curb Walk
Belmont St - 504+89 RT
- 4) Const. Retaining Wall
503+30 - 504+89
ST. EX. 280 CU YD
- 5) 1st 6" Part Pipe 160'
- 6) Adjust Manholes 2 EA
- 7) Const. Access Rd
By Other's

TL No	Dist No	Owner
600	501	Wm. F. & Ruby E. Baddock
3204	7120	Larry L. & Audrey E. Fisher
3100	..	Larry L. & Audrey E. Fisher
3400	67	556 Oregon National Guard