

T. 3 N., R. 10 E., W.M.  
68-32-2

T. 2 N., R. 10 E., W.M.  
68-32-2

OREGON STATE HIGHWAY DEPARTMENT  
Constructed Line

# HOOD RIVER-PARKDALE SECTION

HOOD RIVER HIGHWAY

HOOD RIVER COUNTY

Scale: 1 inch = 400 feet

Traced by L.H.N.

March, 1949

DRG. NO. 6B-32-2



T. 2 N. R. 10 E. W.M.  
6B-32-2



1321



1870.4  
A 39° 42'  
76.114.2

2510.1  
A 90° 14'  
75.151.1

15

EQUATION

HOOD RIVER

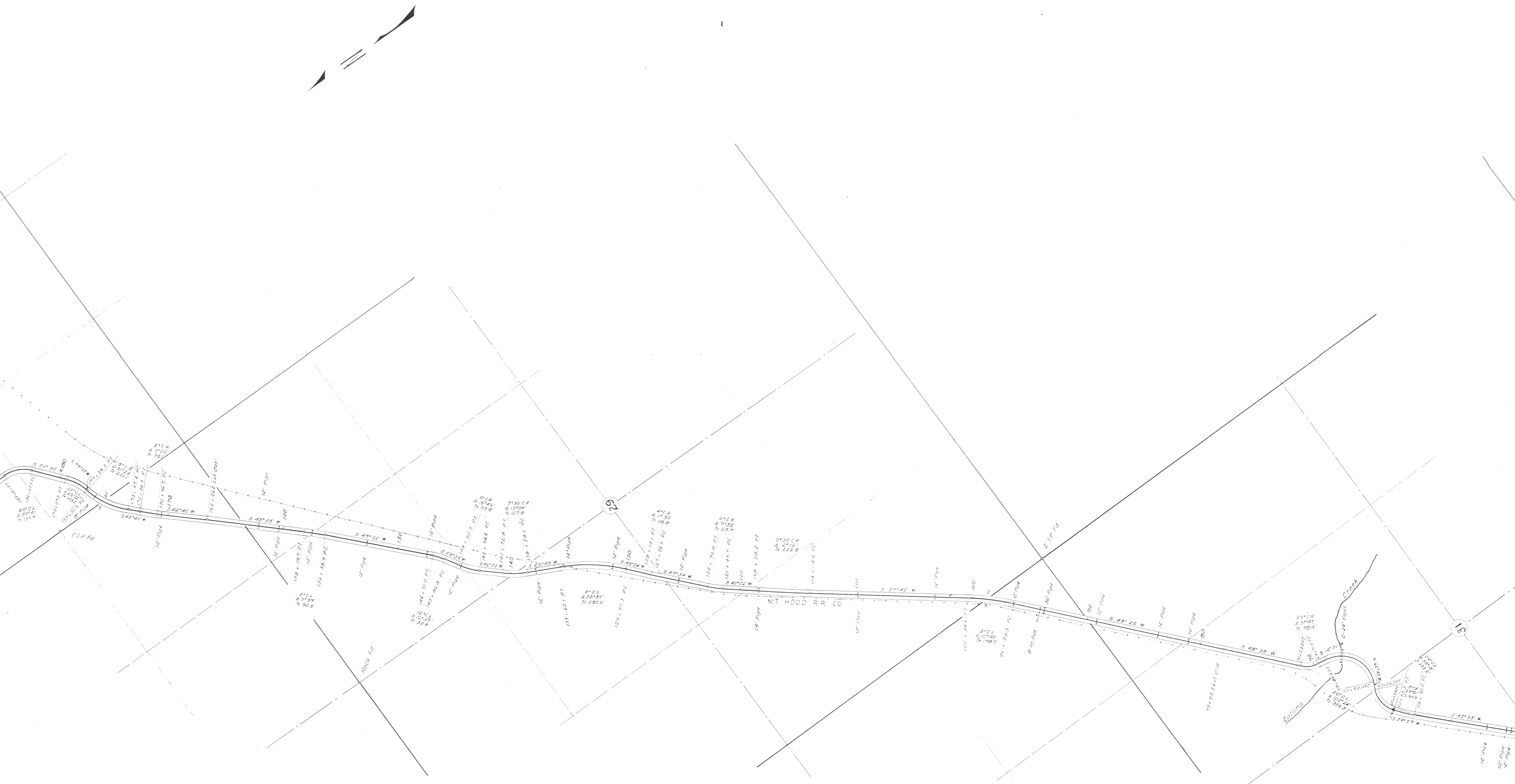
12

80° 11' E

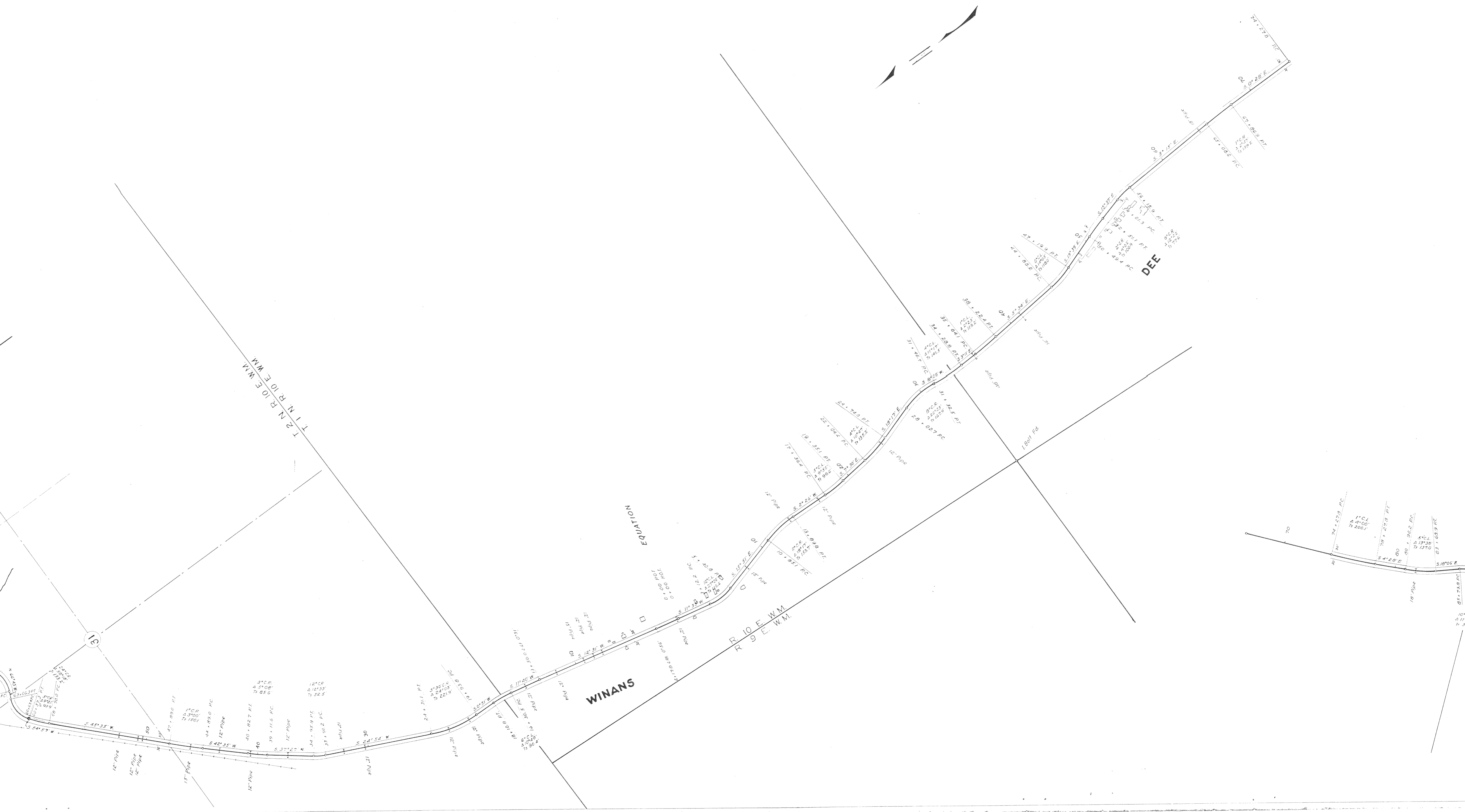
1° 12' Pd

S 48° 40' W

T. 2 N. R. 10 E. W.M.  
68-32-2



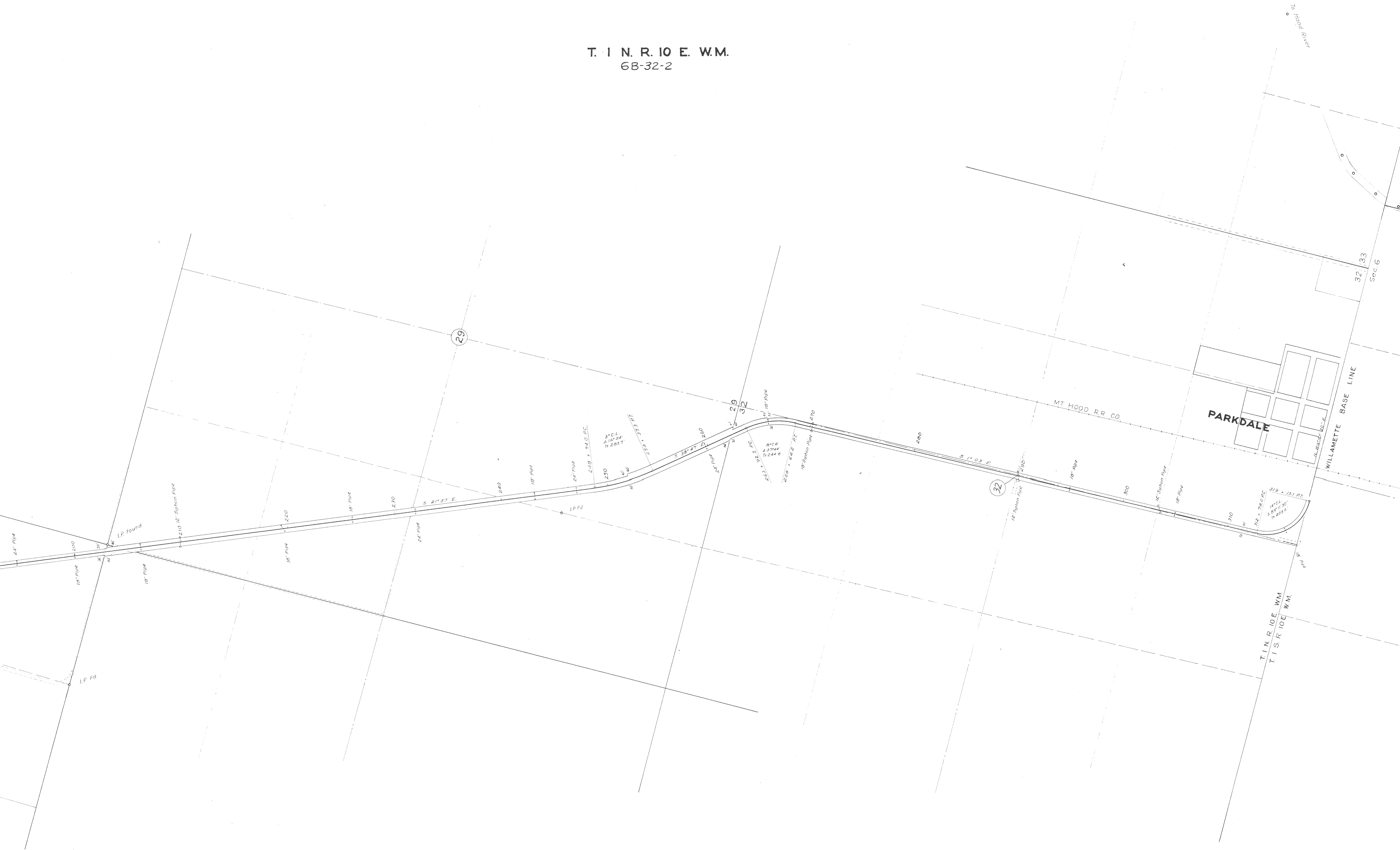
T. 1 N. R. 10 E. W.M.  
6B-32-2



T. 2 N., R. 10 E., W.M.  
6B-32-2



T. 1 N. R. 10 E. W.M.  
6B-32-2



T. 1 N. R. 10 E. W.M.  
T. 1 S. R. 10 E. W.M.

PARKDALE

MT HOOD R.R. CO.

WILLAMETTE BASE LINE

32, 33  
Sec. 6

to Hood River



*Hood River - Parkdale Section*  
*Drg. No. 6B-32-2*