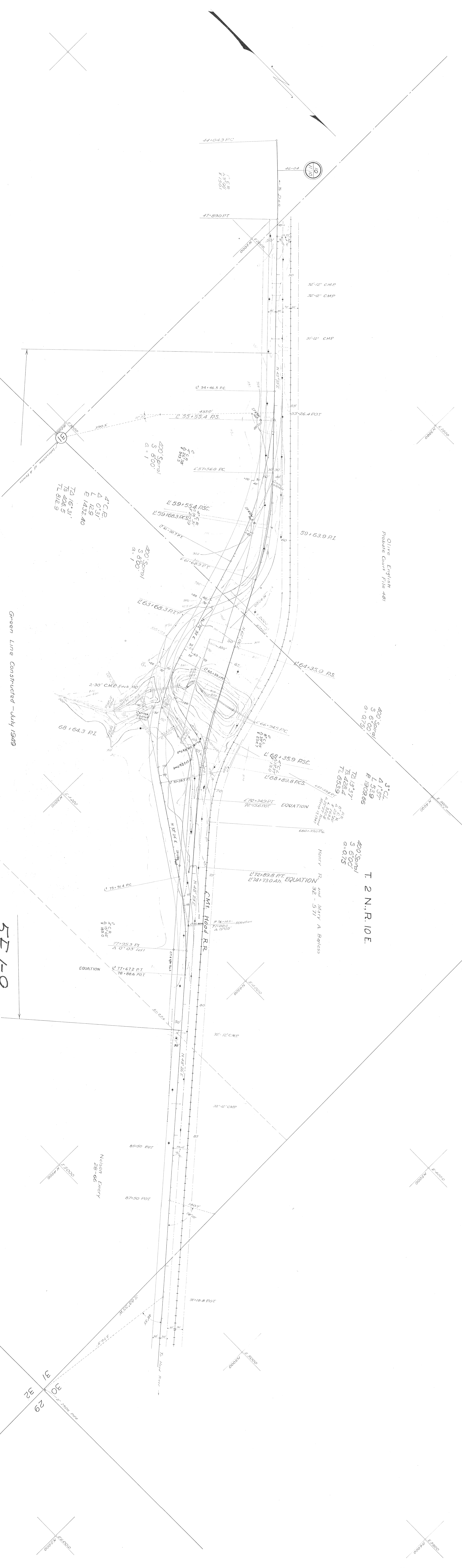


OREGON STATE HIGHWAY DEPARTMENT
COLLINS CREEK SECTION
HOOD RIVER HIGHWAY - HOOD RIVER COUNTY

STATION 53+81
 LOCATED - L - LINE
 LENGTH OF SECTION 0.52 MILE
 SCALE 1"=100'
 J.E. Peck, Resident Engineer
 MARCH 1947

STATION 54+65 - 79+89
 LOCATED - L - LINE
 LENGTH OF SECTION 0.45 MILE
S.F. 1-9
S.H. 1

Constructed Line



S.F. 1-9
S.H. 2

Green Line Constructed - July 1949