

OREGON STATE HIGHWAY DEPARTMENT

# COLLINS CREEK SECTION

HOOD RIVER HIGHWAY - HOOD RIVER COUNTY

STATION 53 - 81

~~LOCATED L' LINE~~

LENGTH OF SECTION 0.52 MILE

SCALE 1" = 100'

J.E. Peck, Resident Engineer

MARCH 1947

Constructed Line

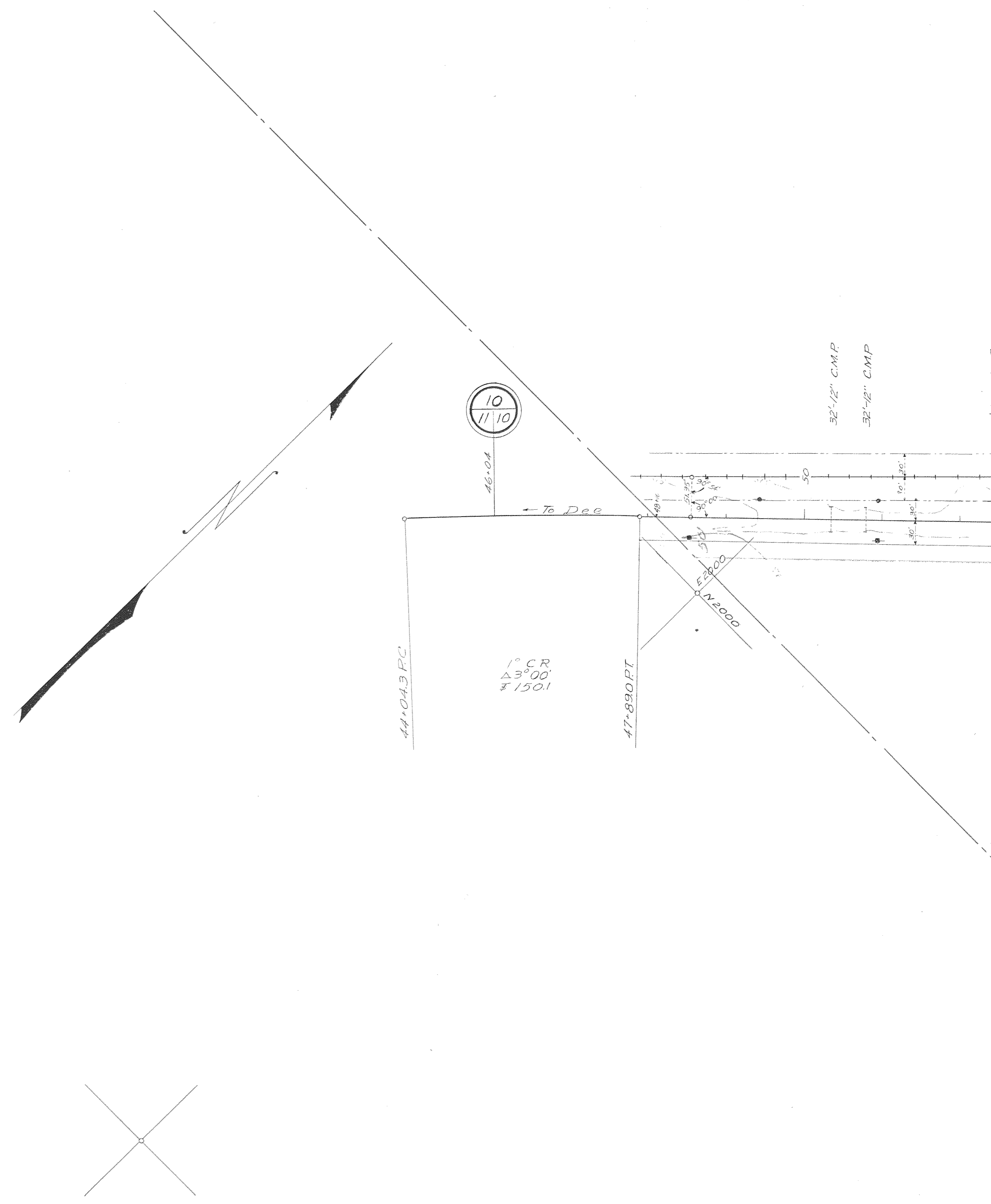
~~STATION 54+46.5 - 79+50~~

~~LOCATED L' LINE~~

~~LENGTH OF SECTION 0.45 MILE~~

5F 1-9

SH. 1



Olive English  
Probate Court File 481

T. 2 N., R. 10 E.

400' Spiral  
S 6°00'  
a=0.75

400' Spiral  
S 6°00'  
a=0.75

3° CL.  
Δ 1°37'  
L 53.9  
R 1909.86

TΔ 13°37'  
Ts 428.4  
TL 653.9

R.R.  
8° C.R.  
Δ 25°40'  
L 163.2  
L 326.8  
Δ 25°27' Turned  
March 13, 1947

Henry R. and Mary A. Bayless  
32 - 571

L 72+69.8 PT. EQUATION  
L 74+73.0 Ah. EQUATION

EQUATION  
L 70+34.9 PT.  
72+56.6 ROT

L 68+35.9 RSC.  
4° CL.  
Δ 13°37'  
L 71.0

L 66+94.5 PC.  
8° C.R.  
Δ 39°09'  
T 254.7

L 64+35.9 PS.

59+63.9 PI.

L 59+55.4 RSC.  
4° C.R.  
Δ 16°16'  
L 207.9  
R 517.9

400' Spiral  
S 8°00'  
a=1

400' Spiral  
S 8°00'  
a=1

4° C.R.  
Δ 0°31'  
L 12.9  
R 1432.40

TΔ 16°31'  
Ts 408.5  
TL 812.9

L 63+68.3 RT.

68+64.3 PI.

2-30' C.M.P. Each 100'

L 33+91.4 PC.

L 77+67.2 PT.  
78+86.6 POT

L 77+95.3 PI.  
A 0°03' Left

EQUATION

N 48°23'E

N 48°26'E

Mt. Hood R.R.

N 45°35'E

N 62°06'E

N 72°33'E

N 33°24'E

L 54+46.5 PC.

L 35+55.4 RS.

L 57+56.0 FC.

L 61+89.9 PT.

L 67+89.9 PT.

N 30°00'E

E 30°00'E

N 30°00'E

E 30°00'E

N 30°00'E

E 30°00'E

N 30°00'E

E 30°00'E

N 30°00'E

E 30°00'E

N 30°00'E

E 30°00'E

N 30°00'E

E 30°00'E

N 30°00'E

E 30°00'E

N 30°00'E

E 30°00'E

N 30°00'E

E 30°00'E

N 30°00'E

E 30°00'E

N 30°00'E

E 30°00'E

N 30°00'E

E 30°00'E

N 30°00'E

E 30°00'E

Green Line Constructed - July 1949

5F1-9  
5H.2

31

Intersection of 4 Fences

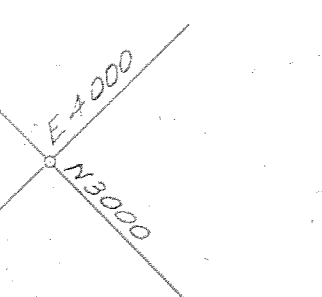
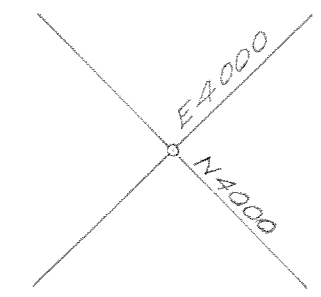
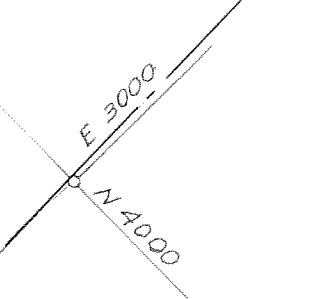
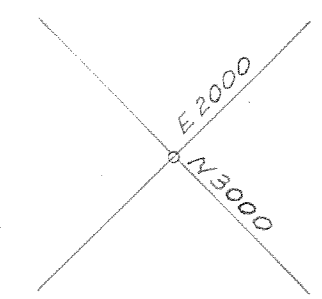
32 1/2" C.M.P.

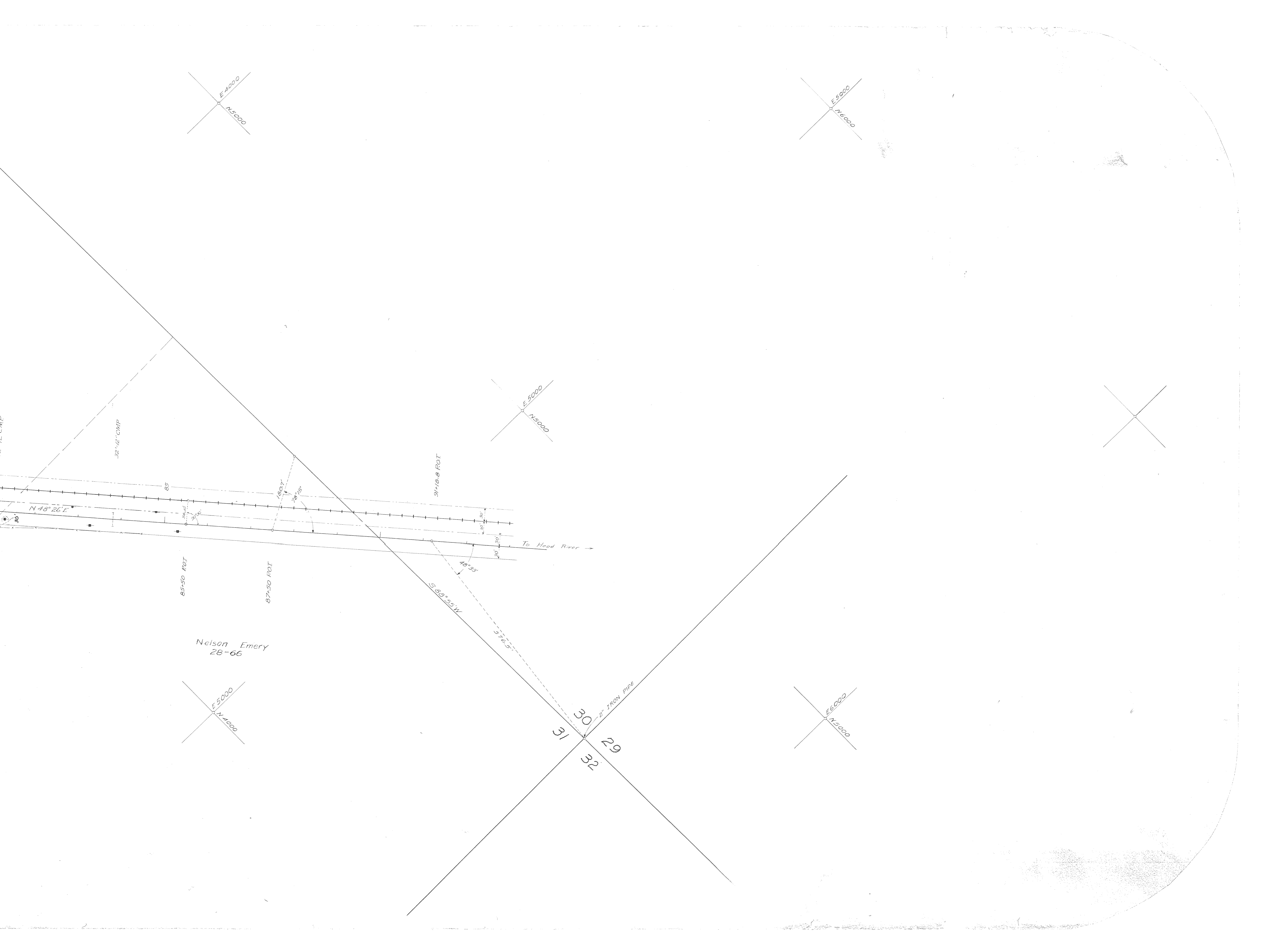
32 1/2" C.M.P.

32 1/2" C.M.P.

32 1/2" C.M.P.

32 1/2" C.M.P.





E 4000  
N 5000

E 5000  
N 6000

E 5000  
N 5000

X

E 5000  
N 4000

E 6000  
N 5000

Nelson Emery  
28-66

31  
30  
32  
29

32'-2" CMP

31'-10" ROT

85'-50" ROT

87'-50" ROT

N 48° 26' E

E 5000  
N 5000

To Head River →

2" IRON PIPE

S 65° 55' 14"

57'-6"

48° 53'

180°

76° 25'

10'

30'

30'