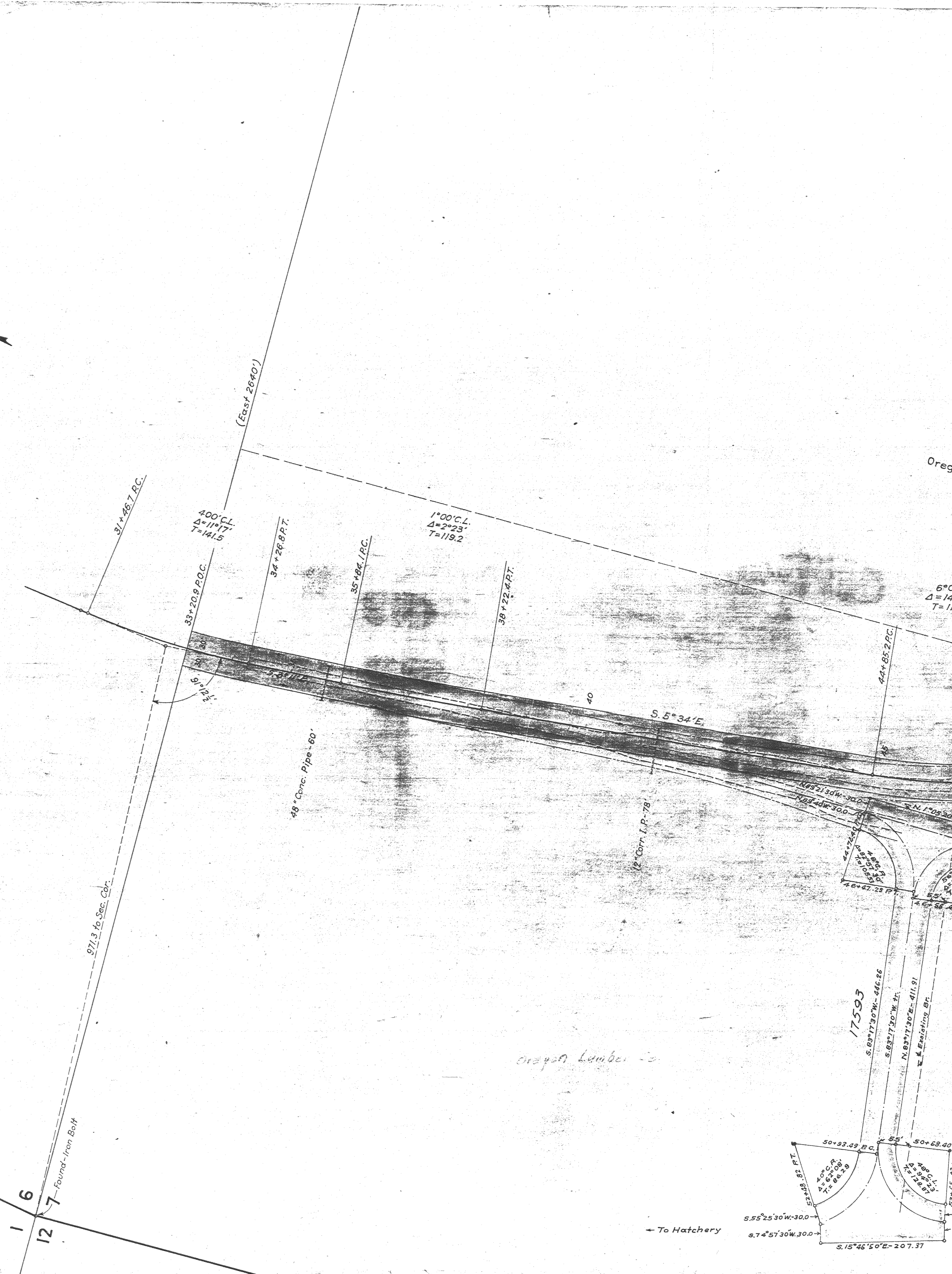


OREGON STATE HIGHWAY DEPARTMENT
Located Line
NORTH UNIT, DEE - PARKDALE SECTION
HOOD RIVER HIGHWAY
HOOD RIVER COUNTY
Scale: 1" = 100' March 1941
Drg. No. 5B-31-15

T. 1 N., R. 10 E.
T. 1 N., R. 9 E.



→ To Hatchery



Oregon Lumber Co.
7-602

6° C.L.
Δ = 14° 05'
T = 118.0

S. 19° 39' E.
60

S. 15° 37' E.
55

(Eas't)

Hood River County
26-24

12
12/13

S. 3° 15' E.

Lumber Shed

Store

Water Tank 24' dia.

Deed - RW 6147

DEE

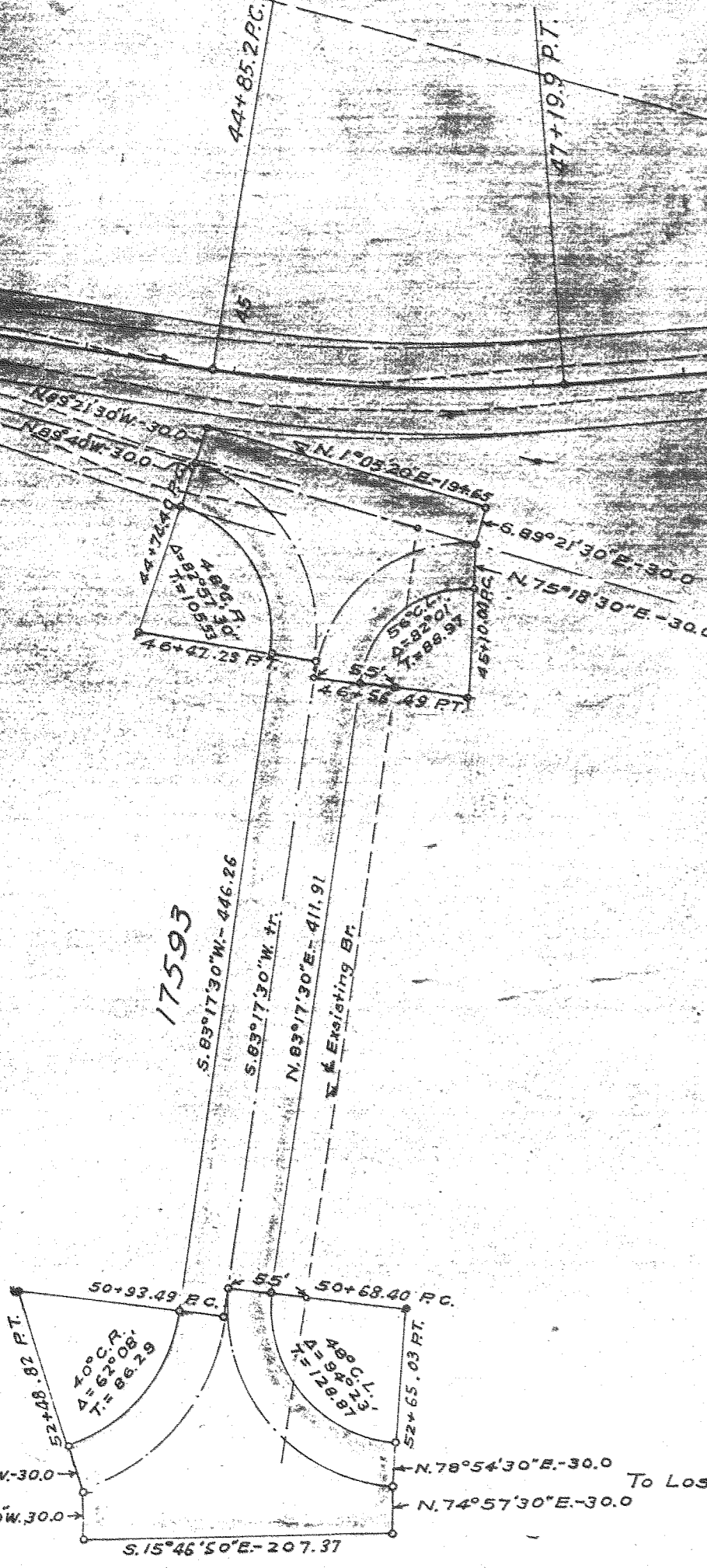
2° C.R.
Δ = 4° 02'
T = 100.9

8° C.R.
Δ = 12° 22'
T = 77.6

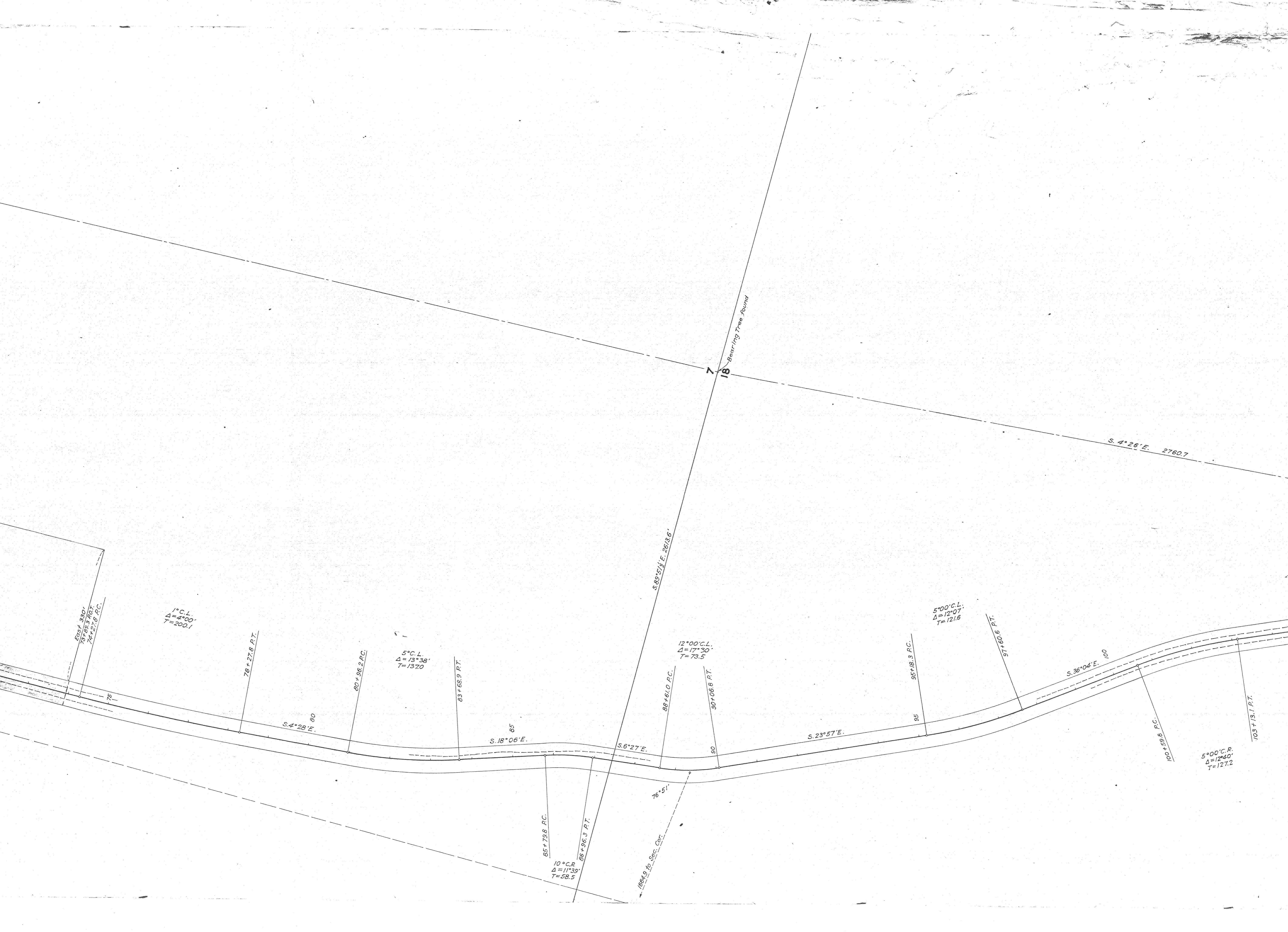
1° 00' C.R.
Δ = 2° 47'
T = 139.2

Oregon Lumber Co.
6-610

EQUATION
71+500 P.O.T. =
72+000 P.O.T. =



To Lost Lake →



7+18.18 Bearing Tree Found

S. 4° 28' E. 2760.7

S. 88° 57' E. 2613.6'

75+330.1
29° 28' 30"
74+27.8 P.C.

1° C.L.
Δ = 4° 00'
T = 200.1

78+27.8 P.T.

S. 4° 28' E. 90

80+96.2 P.C.

5° C.L.
Δ = 13° 38'
T = 137.0

83+68.9 P.T.

S. 18° 06' E. 85

85+79.8 P.C.

10° C.R.
Δ = 11° 39'
T = 58.5

86+96.3 P.T.

76+51.1 Sec. Ctr.

88+61.0 P.C.

12° 00' C.L.
Δ = 17° 30'
T = 73.5

90+06.8 P.T.

S. 6° 27' E. 90

S. 23° 57' E. 95

95+18.3 P.C.

5° 00' C.L.
Δ = 12° 07'
T = 121.6

97+60.6 P.T.

S. 36° 04' E. 100

100+59.8 P.C.

5° 00' C.R.
Δ = 12° 40'
T = 127.2

103+13.1 P.T.



R. 10 E.

(S. 68° 49' E.)

Existing Right of Way
to be retained

