

2°00' C.L.  
Δ=8°29'  
T=2/2.5

& Latta  
O.J. Severson  
20 - 581

136+84.9 P.C.

141+09.1 P.T.

147+90.0 P.O.T.

(1333.35)

Abandoned as State Hwy. as of June 25, 1942. Ab. 105

Deed. R.W. 6342

S. 7°03' E.

Deed - RW 6369

(S. 2° 19' W) (2666.7)

105+85.5 P.C.

Hood River County  
25-120  
Sold on contract to Grace I. Wright

18  
19

106+51.6 P.C.

Fred & Lottie Maurer  
26-287 & 28-10  
Sold on contract to Ted Lowe

2°00' C.L.  
Δ=14°50'  
T=373.0

14  
1415

Hood River County  
23-326  
Sold on contract to J.J. Krumenacher

Hood River County  
23-326  
Sold on contract to Oscar Johnson

Hood River County  
23-326  
Sold on contract to Helen Allegro

Hood River County  
23-326  
Sold on contract to C.J. Hill et ux.

Old Route abandoned as State Hwy. by Res.  
as of June 25, 1942. Ab. 105

(2666.7)

165+85.5 P.C.

166+91.6 P.C.

168+18.3 P.O.C.

170

171+87.2

173+27.2 P.T.

175

175+29.9 P.T.

180

182+05.0

185

188+73.2

190

195

3-Deeds - RW 6468

Deed R.W. 6276

Deed R.W. 6195

Deed R.W. 6190

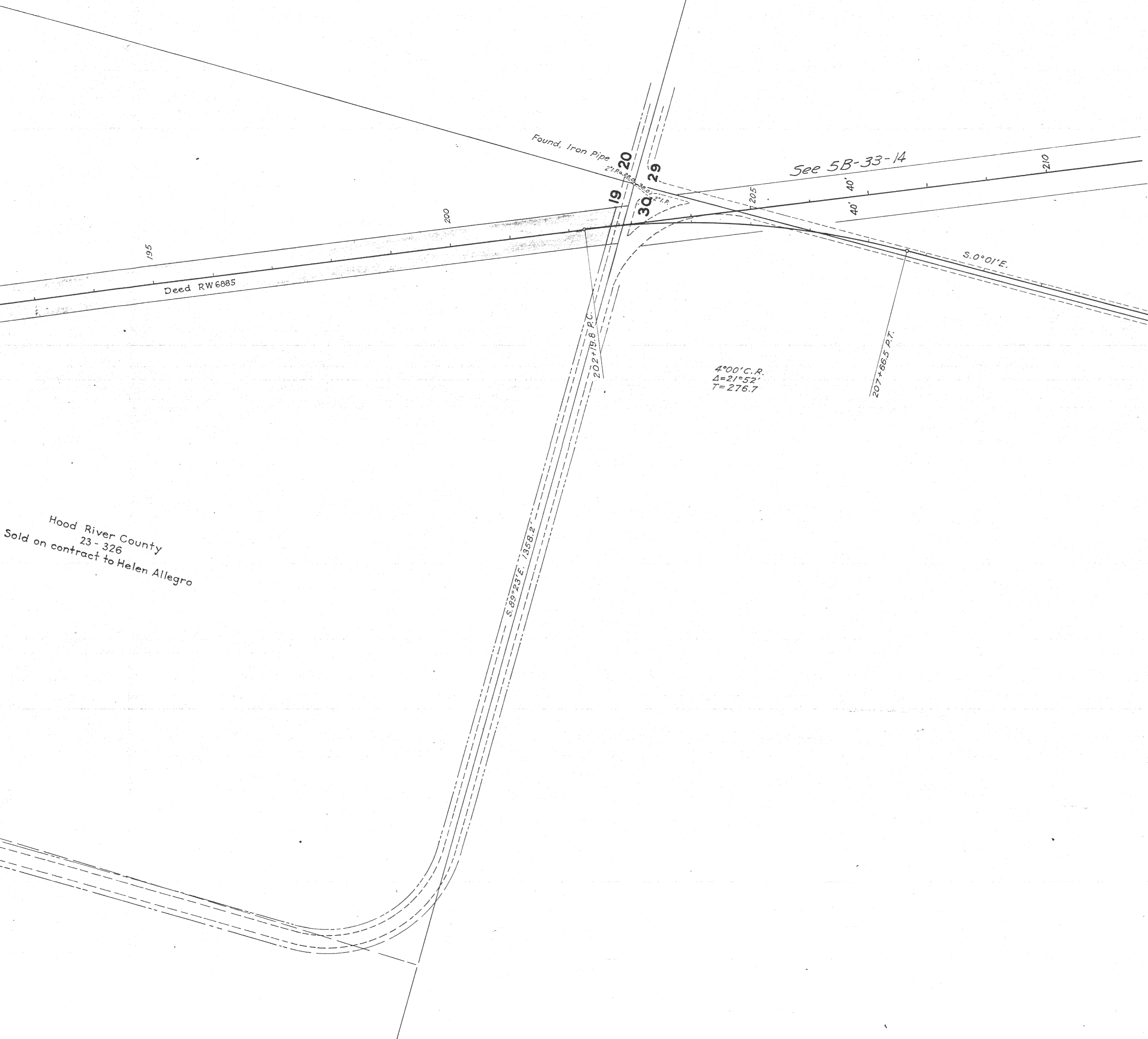
Deed

County Road

8.00

150  
No.

S. 21° 53' E.



N. UNIT. DEE-PARKDALE SECT.  
HOOD RIVER HIGHWAY  
Drg. No. 5B-31-15

Hood River County  
23-326  
Sold on contract to Helen Allegro