

28-50-12

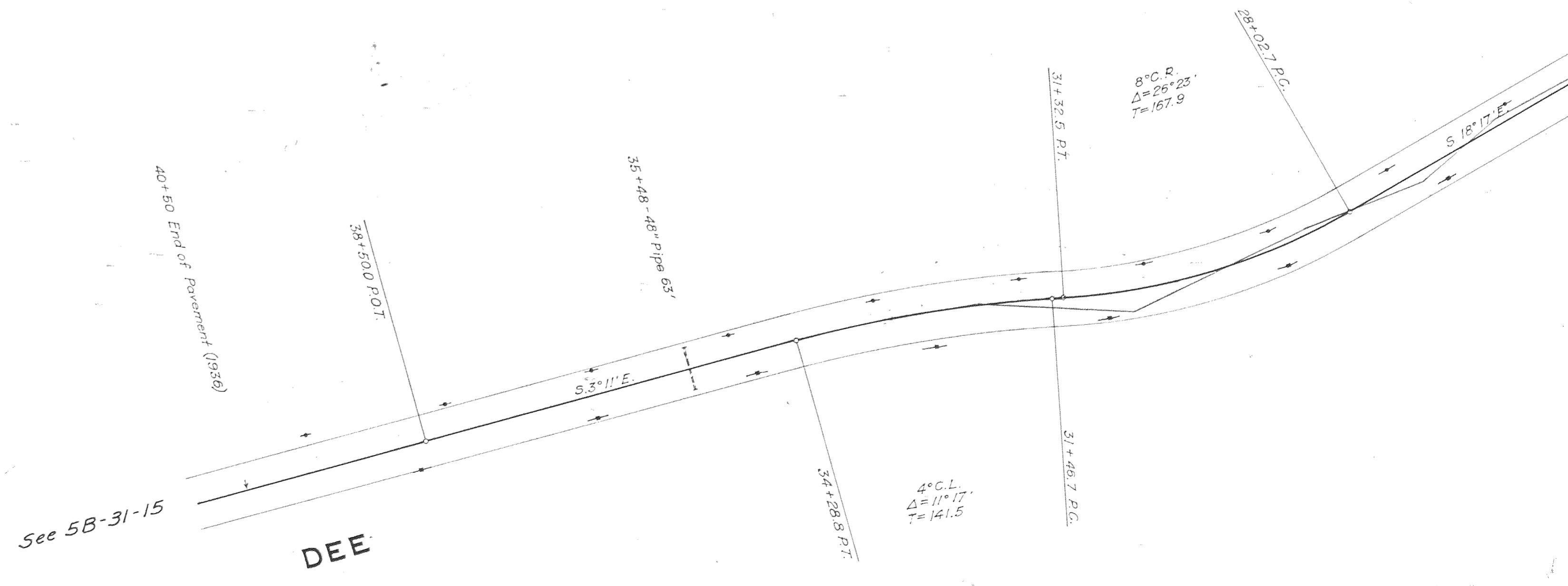
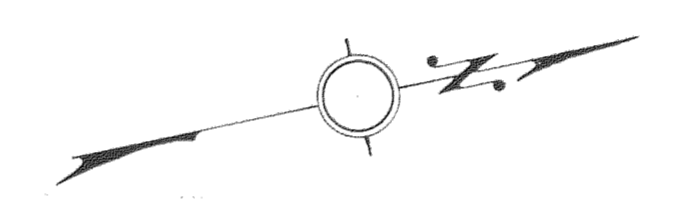
Scale: 1" = 100'
Tucker Bridge - Dee Section

Handwritten notes:
Hwy 281 1938
Constructed line
Tucker Bridge → Dee
(extra copy)

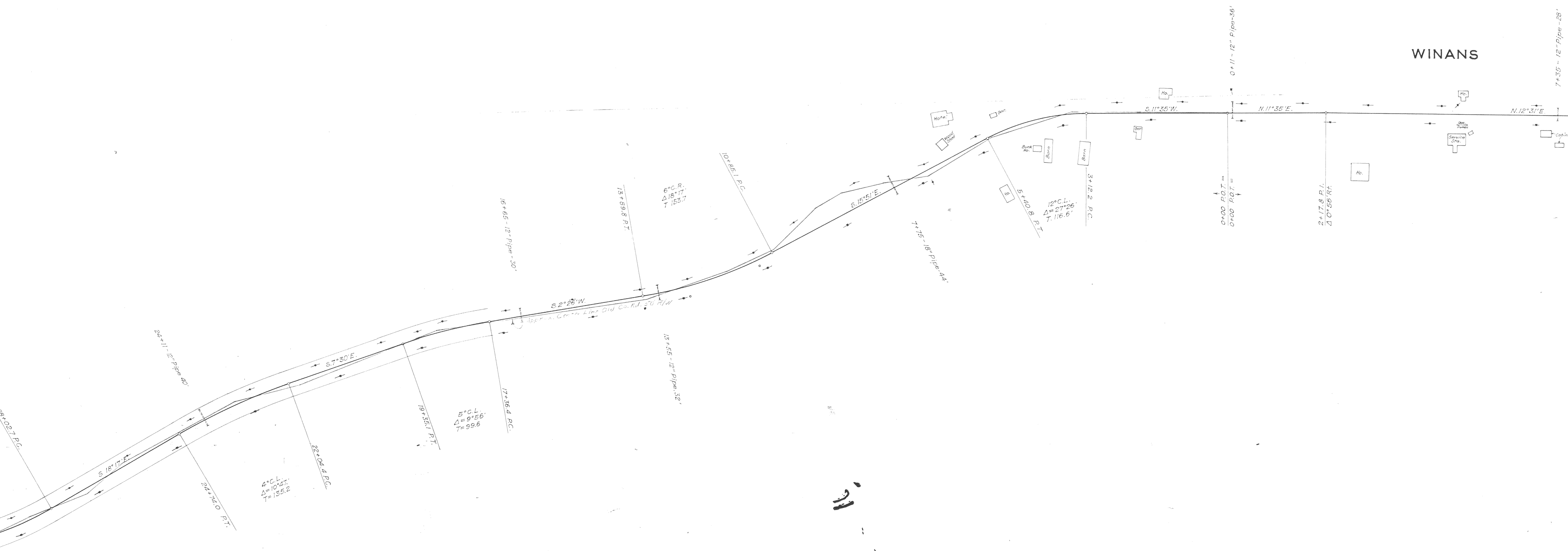
OREGON STATE HIGHWAY DEPARTMENT
Constructed Line
TUCKER BRIDGE - DEE SECTION
HOOD RIVER HIGHWAY
HOOD RIVER COUNTY

Scale: 1" = 100' December 1938

Dwg. No. 5B-20-12



WINANS



T. 2 N., R. 10 E., W. M.
5B-20-12

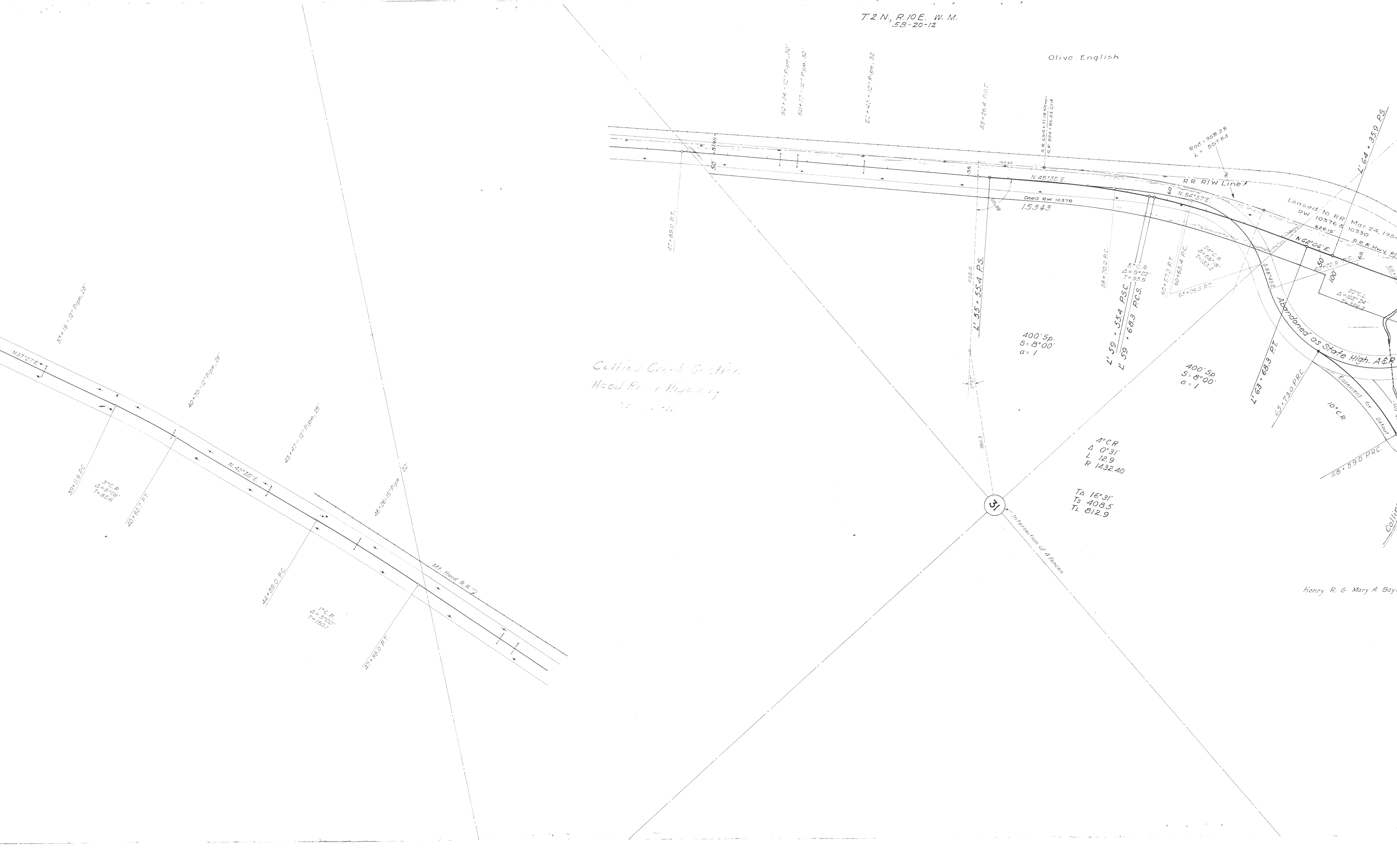
WINANS



T. 2 N., R. 10 E., W. M.
T. 1 N., R. 10 E., W. M.

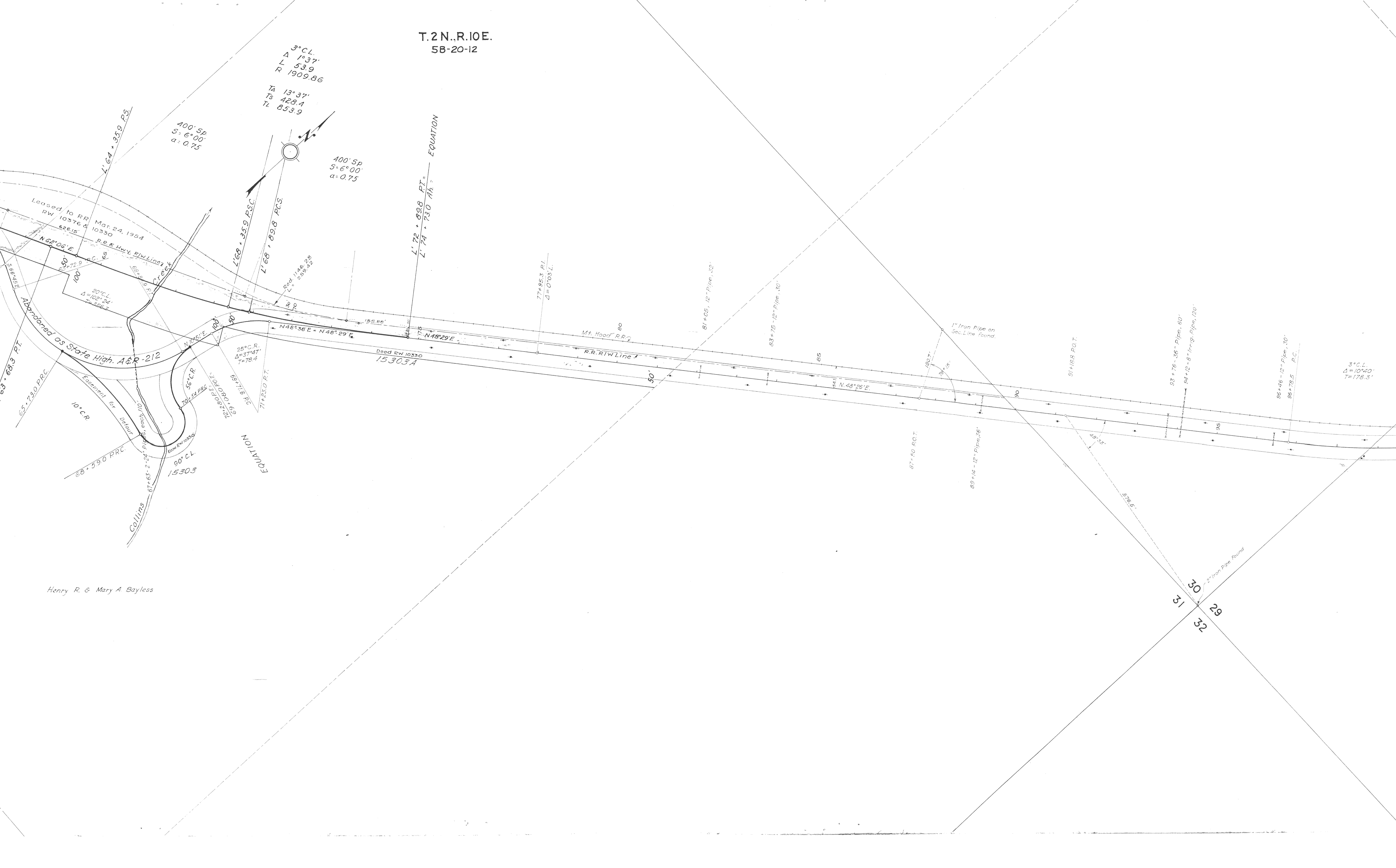
Olive English

Cullins Creek Section
Hood River Highway
1887-1890



Henry R. & Mary A. Bay

T.2N.,R.10E.
5B-20-12



3° C.L.
Δ = 1°37'
L = 53.9
R = 1909.86
T_A = 13°37'
T_S = 428.4
T_L = 853.9

400' Sp
S = 6°00'
a = 0.75

400' Sp
S = 6°00'
a = 0.75

EQUATION
L' 72 + 898 P.T.
L' 74 + 730 M.A.

Leased to RR
RW 10376 &
10330
Mar. 24, 1954

Abandoned as State High. A&R-212

Collins
10° C.R.
68° 59.0 P.R.C.
90° C.L.
15303

Henry R. & Mary A. Bayless

30
31 29
32

T. 2N, R. 10E, W. M.
5B-20-12

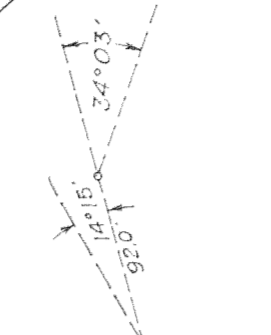
30 29

98+46 - 12" Pipe - 30'
98+78.5 P.C.

3° C.L.
Δ = 10°40'
T = 176.3'

100+34.7 P.T.

103+26 - 12" Pipe - 26'



108+02.0 P.O.T.

108+85 - 12" Pipe - 26'

N 37°46' E

114+04.9 P.C.

0°30' C.R.
Δ = 2°16'
T = 226.8'

118+58.2 P.T.

121+45.7 P.C.

6° C.R.
Δ = 7°52'
T = 65.7'

122+76.8 P.T.

125+34 - 28" Pipe

127+76.6 P.C.

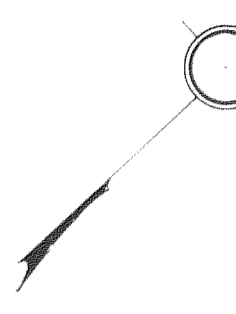
2° C.R.
Δ = 1°30'
T = 18.6'

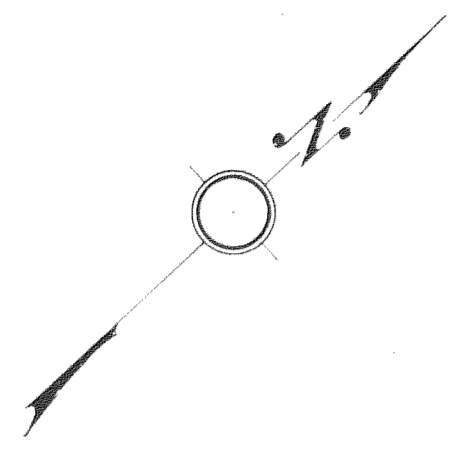
128+14.1 P.T.

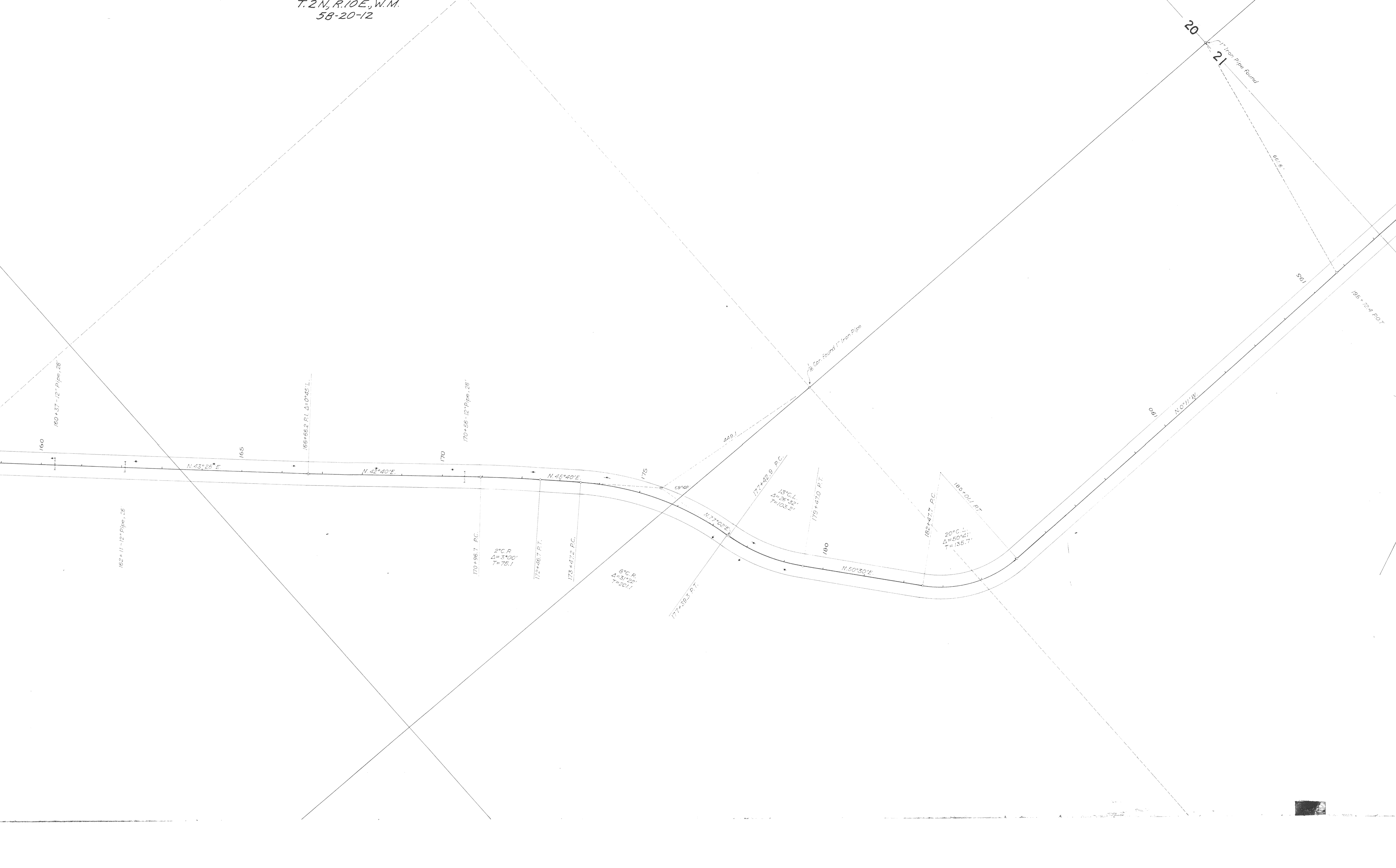
N 47°54' E

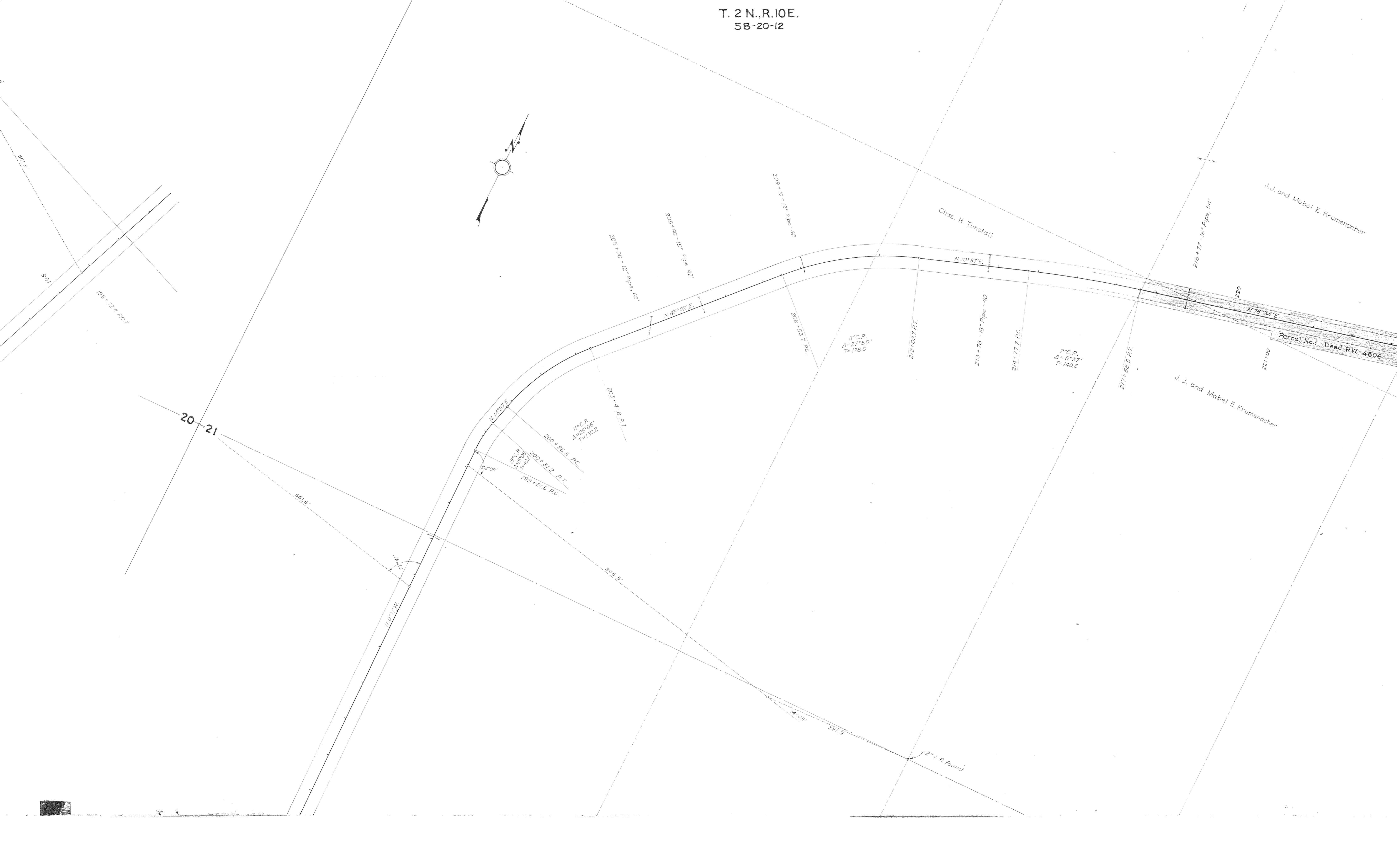
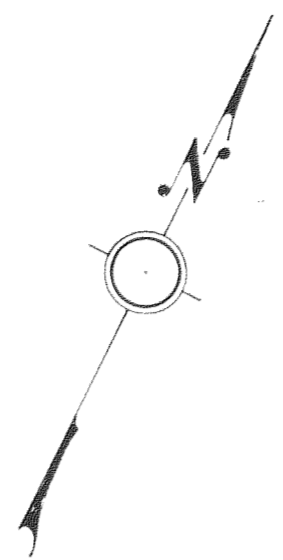
N 49°24' E

129+97.5 P.C.









J.J. and Mabel E. Krumenacher

Chas. H. Tunstall

Parcel No. 1 Deed R.W. 4806

J.J. and Mabel E. Krumenacher

20-21

2" I. P. found

2" C. R.
Δ = 6° 37'
T = 140.6

8" C. R.
Δ = 27° 55'
T = 178.0

1" C. R.
Δ = 28° 05'
T = 130.2

200 + 312 P.T.

199 + 51.5 P.C.

N 127° E

N 47° 02' E

N 70° 57' E

N 76° 34' E

209 + 00 - 12" Pipe - 42'

206 + 10 - 15" Pipe - 42'

209 + 10 - 12" Pipe - 42'

218 + 77 - 16" Pipe - 54'

213 + 78 - 18" Pipe - 40'

214 + 77.7 P.C.

217 + 58.5 P.T.

208 + 15.7 P.C.

212 + 02.7 P.T.

220

221 + 00

661.6

666.5

14' 00"

581.5

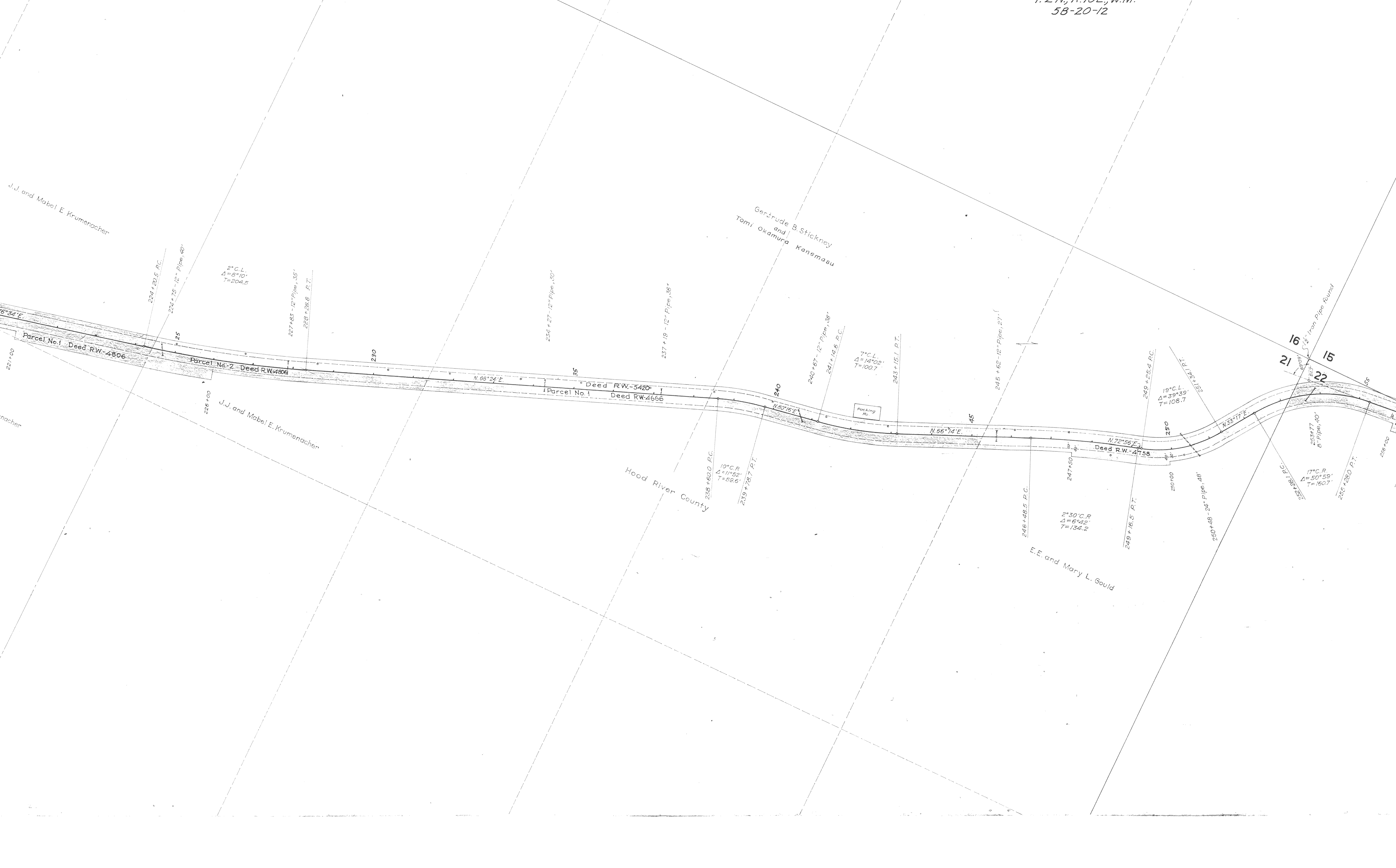
114' 17"

N 071° W

195 + 72.4 P.O.T.

195

661.6



J.J. and Mabel E. Krumenacher

Gertrude B. Stickney
and
Tomi Okamura Kanemasu

Parcel No. 1 Deed R.W. 4806

Parcel No. 2 Deed R.W. 4806

Parcel No. 1 Deed R.W. 4666

Deed R.W. 4758

Hood River County

E.E. and Mary L. Gould

2° C.L.
Δ = 6° 10'
T = 206.5

227+63 - 12" Pipe, 35'
258+28.6 P.T.

234+27 - 12" Pipe, 30'

237+19 - 12" Pipe, 36'

240+67 - 12" Pipe, 38'
241+14.6 P.C.

7° C.L.
Δ = 14° 02'
T = 100.7

243+15.1 P.T.

245+62 - 12" Pipe, 27'

249+26.4 P.C.

19° C.L.
Δ = 39° 39'
T = 108.7

253+77
8" Pipe, 40'

17° C.R.
Δ = 50° 59'
T = 160.7

255+280 P.T.

251+182+155
1.61 P.C.

Iron Pipe Round

16

15

21

22

155

258+00

221+00

226+00

230

35

240

45

250

155

155

155

155

155

155

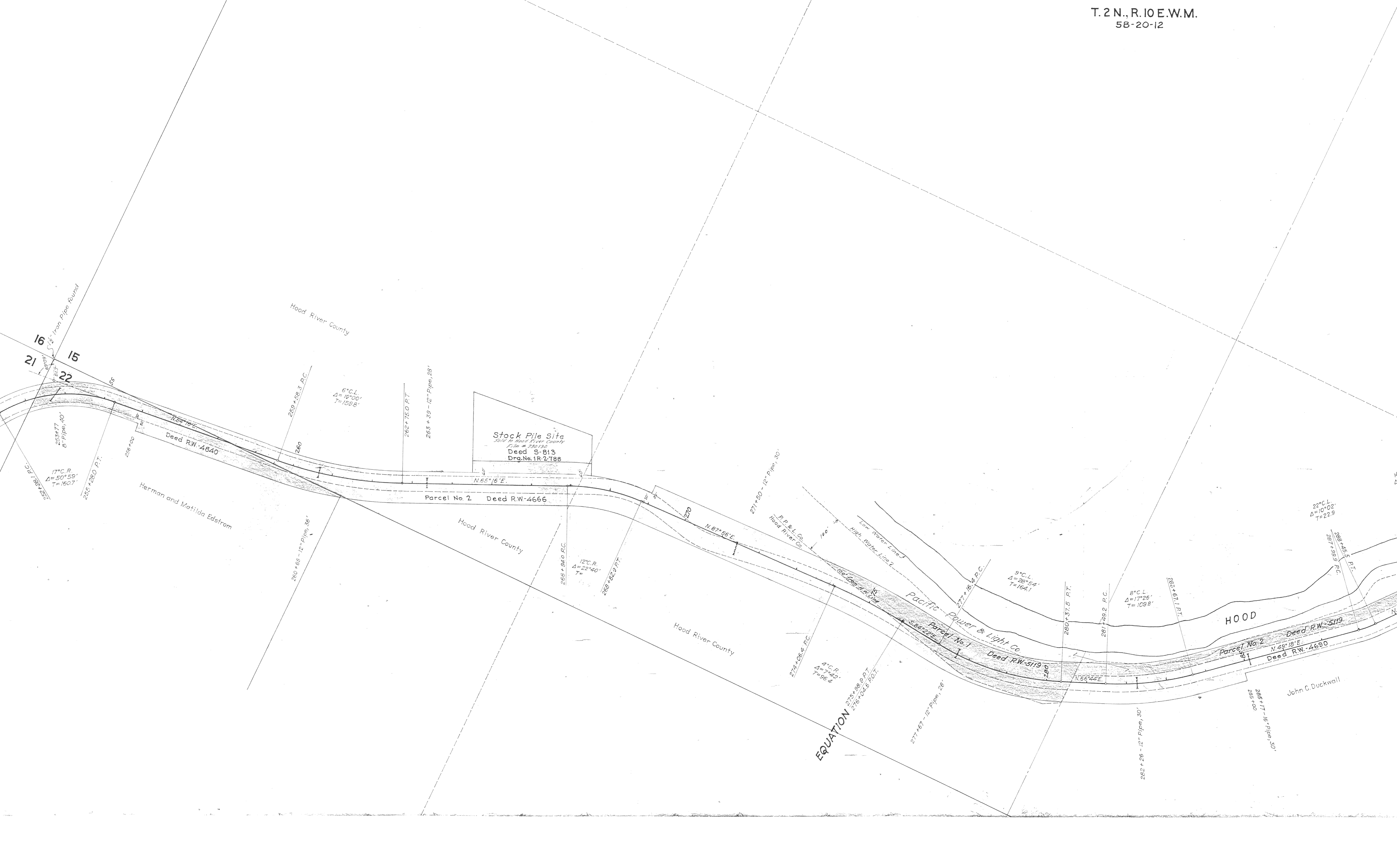
155

155

155

155

155



16
21
15
22

Hood River County

17° C. R.
 $\Delta = 50^{\circ} 59'$
 $T = 160.7$

Deed R.W. 4840

Herman and Matilda Edstrom

6" C.L.
 $\Delta = 18^{\circ} 00'$
 $T = 159.8'$

Stock Pile Site
5610 in Hood River County
File # 256156
Deed S-813
Drg. No. 1R-2-T88

Parcel No. 2 Deed R.W. 4666

Hood River County

Hood River County

EQUATION
275+88.0 P.T.
276+04.0 P.O.T.

Pacific Power & Light Co.
Parcel No. 1
Deed R.W. 5119

HOOD

Parcel No. 2
Deed R.W. 5119
N. 29° 18' E.
Deed R.W. 4690

John C. Duckwall

22° C.L.
 $\Delta = 10^{\circ} 02'$
 $T = 22.9$

8" C.L.
 $\Delta = 17^{\circ} 26'$
 $T = 109.8'$

9" C.L.
 $\Delta = 28^{\circ} 54'$
 $T = 164.1$

4" C.R.
 $\Delta = 1^{\circ} 22'$
 $T = 96.4$

Iron Pipe Buried

12" Pipe, 36'

260+65 - 12" Pipe, 36'

259+58.3 P.C.

262+75.0 P.T.

263+39 - 12" Pipe, 28'

12" C.R.
 $\Delta = 22^{\circ} 40'$
 $T = 110.0$

268+82.0 P.T.

271+50 - 12" Pipe, 30'

P.P. & L. Co.
Hood River Co.

160' from Low Line

377+16.4 P.C.

260+37.5 P.T.

261+49.2 P.C.

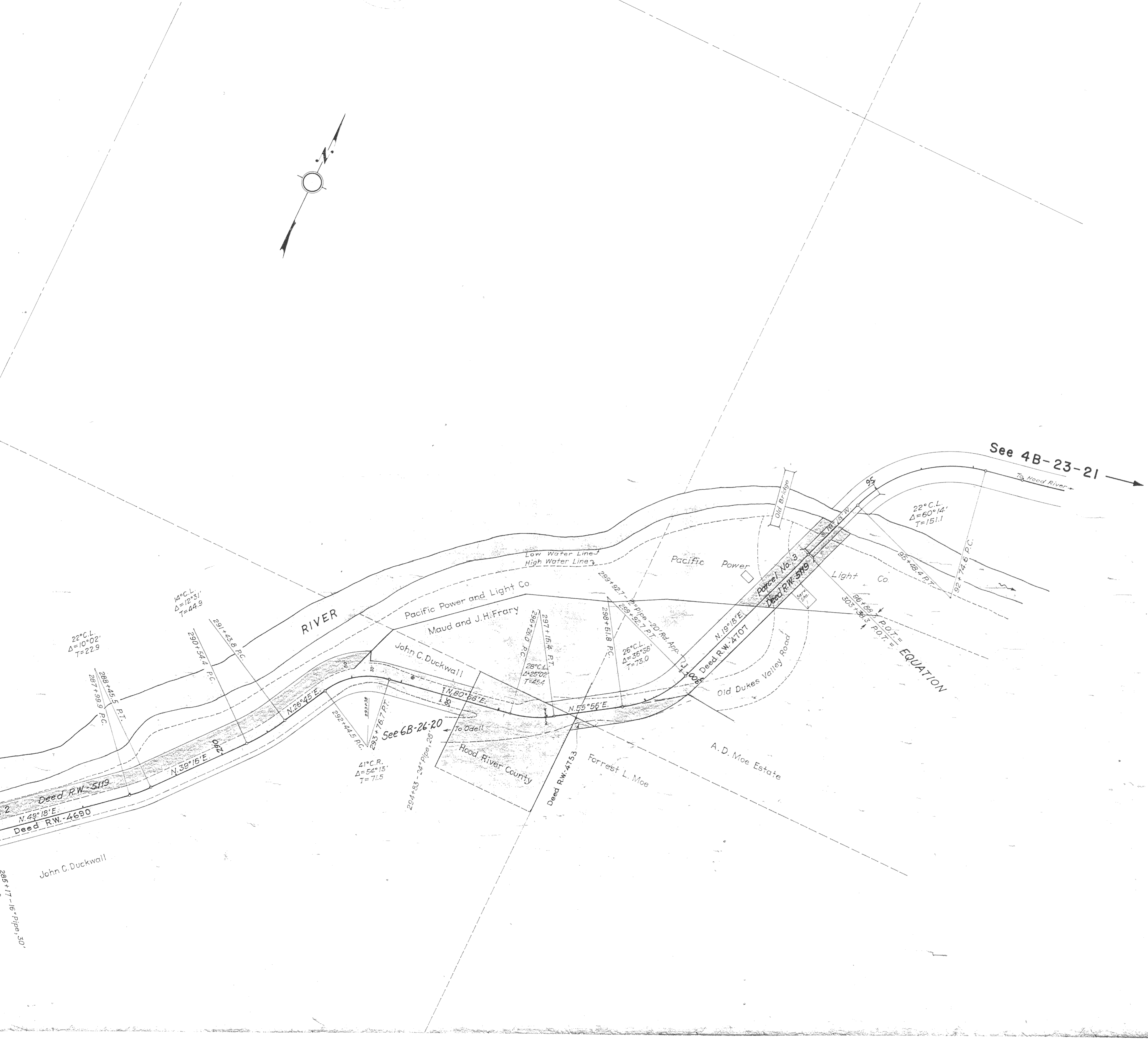
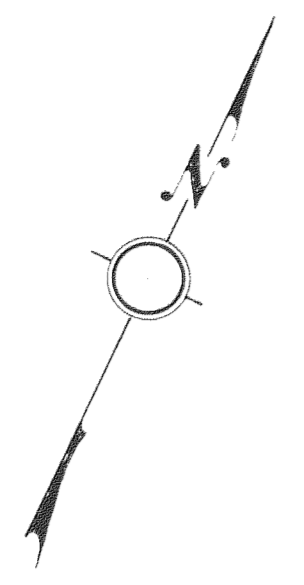
268+67.1 P.T.

269+45.5 P.T.

267+98.3 P.C.

282+26 - 12" Pipe, 30'

285+17 - 16" Pipe, 30'



TUCKER BRIDGE - DEE SECT.

HOOD RIVER HWY.

Scale: 1"=100' December 1938

Drg. No. 5B-20-12