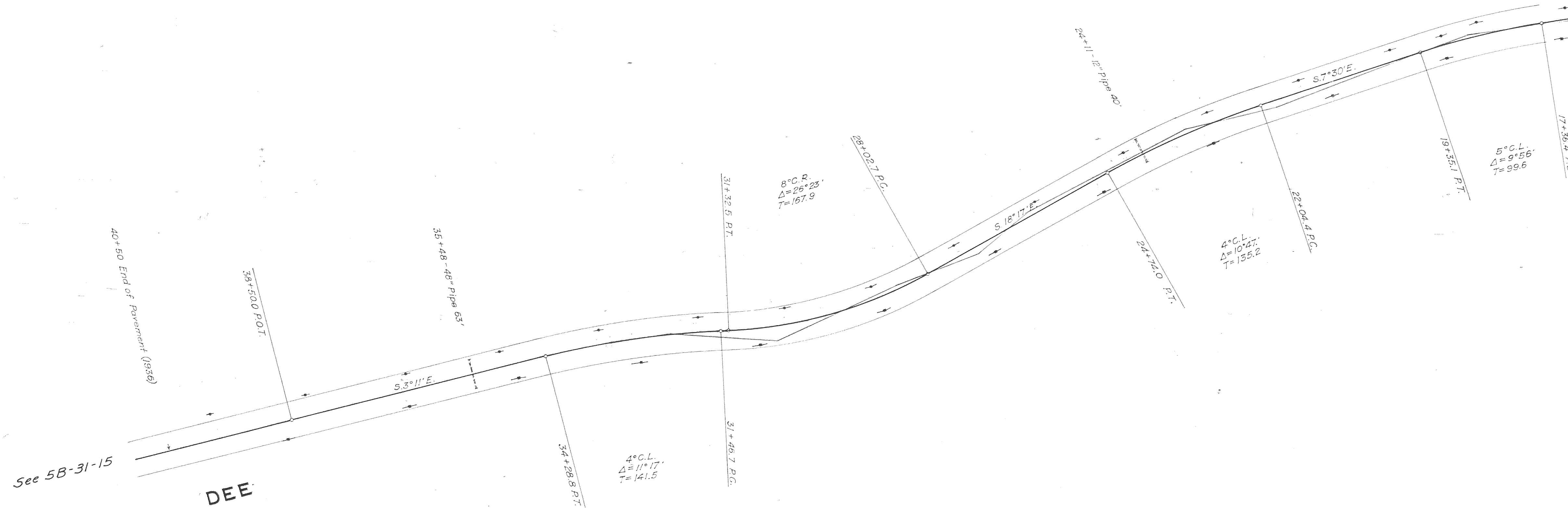
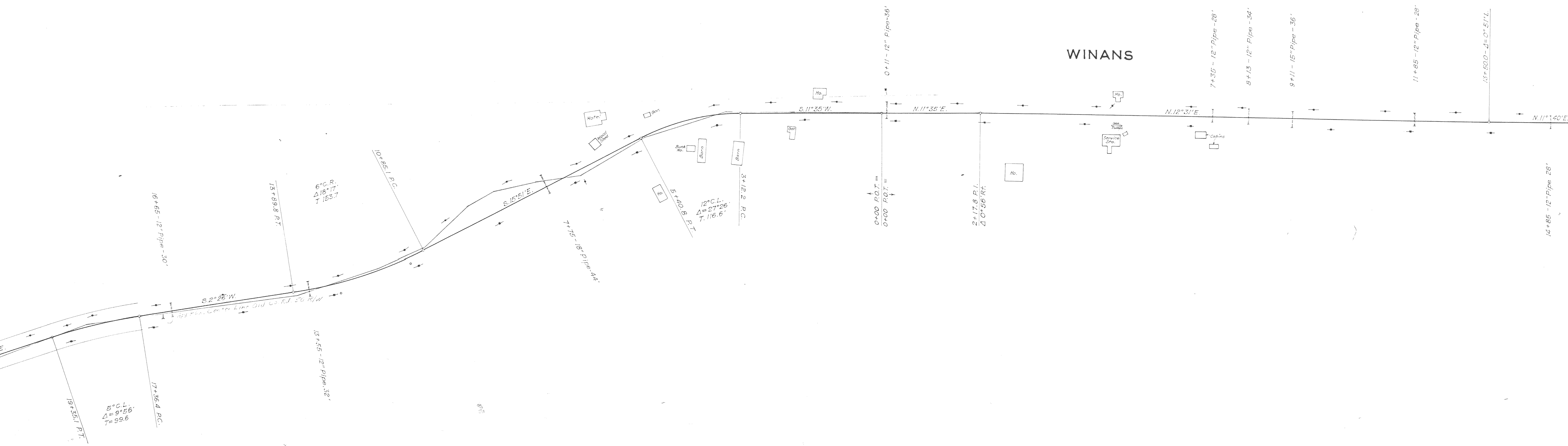


OREGON STATE HIGHWAY DEPARTMENT
Constructed Line
TUCKER BRIDGE - DEE SECTION
HOOD RIVER HIGHWAY
HOOD RIVER COUNTY

Scale: 1" = 100' December 1938

Drg. No. 5B-20-12





WINANS

16.

T. 2 N., R. 10 E., W. M.
58-20-12



T. 2 N., R. 10 E., W. M.
T. 1 N., R. 10 E., W. M.

6° C. L.
Δ = 107.29'
T = 90.4'

5° 30' C. R.
Δ = 24° 03'
T = 221.9

12° C. R.
Δ = 12° 33'
T = 62.5

3° C. R.
Δ = 5° 09'
T = 85.6

1° C. R.
Δ = 3° 00'
T = 150.1

13+50.0 - 12" Pipe - 28'

16+30.5 P.C.

18+0.8 P.T.

19+53.8 P.C.

24+31.1 P.T.

33+91.2 P.C.

34+95.8 P.T.

39+116.0 P.C.

39+82.7 P.T.

44+89.0 P.C.

47+88.0 P.T.

14+85 - 12" Pipe - 28'

N. 11° 40' E.

N. 40° 51' E.

N. 24° 54' E.

N. 37° 27' E.

N. 42° 35' E.

20+72 - 12" Pipe - 28'

22+72 - 12" Pipe - 30'

30+30 - 12" Pipe - 30'

32+24 - 12" Pipe - 31'

37+19 - 12" Pipe - 28'

40+10 - 12" Pipe - 28'

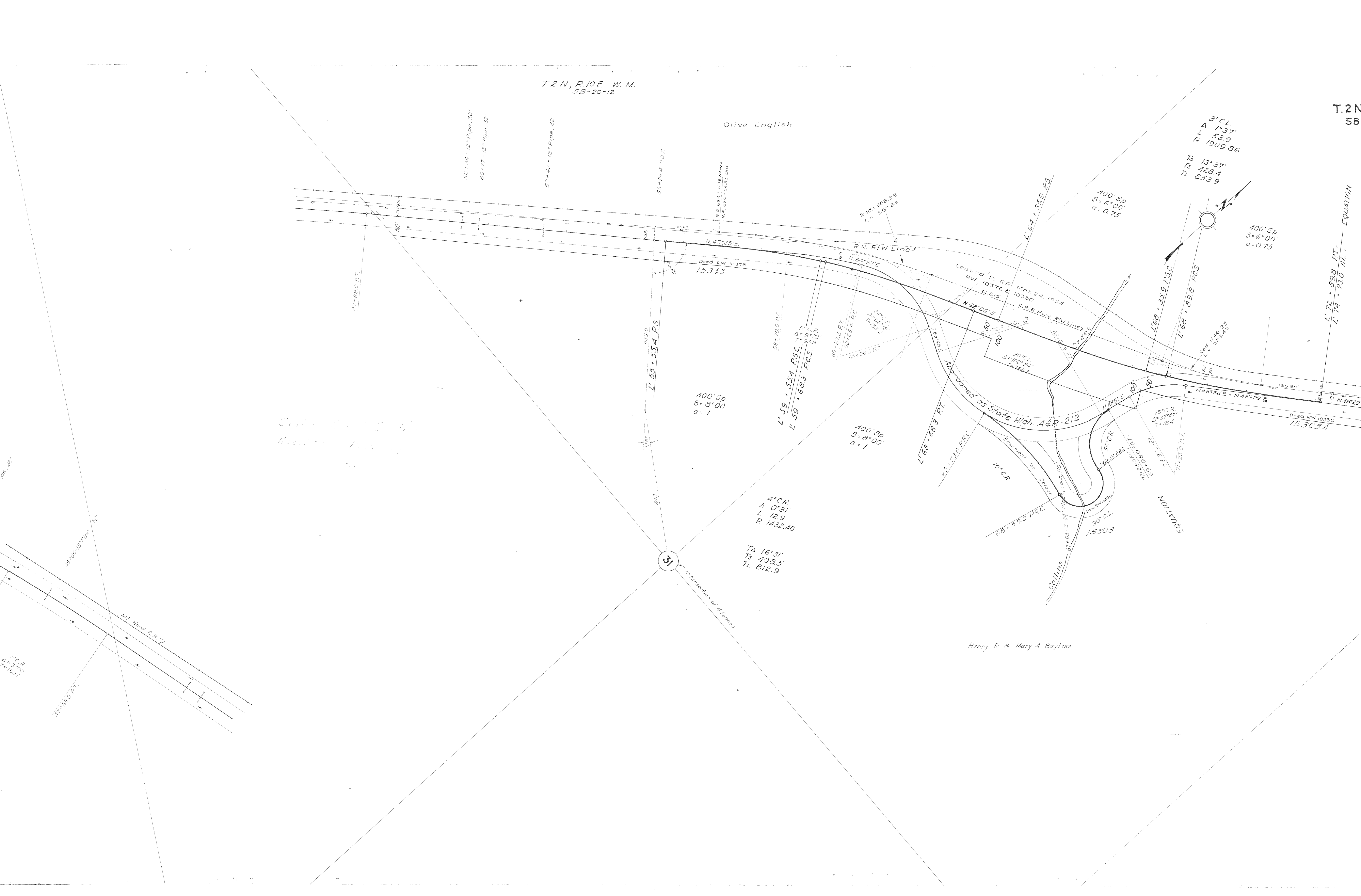
43+47 - 12" Pipe - 28'

46+08 - 15" Pipe - 52'

T.2 N., R.10 E., W. M.
5B-20-12

Olive English

T.2 N.
5B



50' x 56' - 12" Pipe, 30'
50' x 77' - 12" Pipe, 32'

50' x 43' - 12" Pipe, 32'

65' x 26.4' P.O.P.

D.R. 624-1718 NOW
R.R. 874-86.33 Old

Rad = 958.28
L = 557.64

3° C.L.
Δ 13.37'
L 53.9
R 1909.86
TA 13° 37'
Ts 428.4
TL 853.9

400' Sp
S = 6° 00'
a = 0.75

400' Sp
S = 6° 00'
a = 0.75

L' 72' x 89.8' P.T.
L' 74' x 73.0' P.T. = EQUATION

47' x 89.0' P.T.

L' 55' x 55.4' P.S.

58' x 70.0' P.C.
L' 59' x 55.4' P.S.C. N 45°
L' 59' x 68.3' P.C.S.

60' x 57.3' P.T.
60' x 63.4' P.C.
61' x 65.3' P.T.

L' 64' x 35.9' P.S.

L' 68' x 35.9' P.S.C.

L' 68' x 89.8' P.C.S.

Leased to RR
RW 10376 &
10330
Mar. 24, 1954
P.R. & Hwy. R/W Line

N 62° 06' E

Abandoned OS State High. A&R-212

L' 63' x 68.3' P.T.

65' x 72.0' P.R.C.

10' C.R.

68' x 59.0' P.R.C.

Collins

EQUATION

Deed RW 10330
1530.3

Collins
Head R.R. 7
M.D. 1901

400' Sp
S = 8° 00'
a = 1

400' Sp
S = 6° 00'
a = 1

4° C.R.
Δ 0° 31'
L 12.9
R 1432.40

TA 16° 31'
Ts 408.5
TL 812.9

31

Intersection of 4 fences

Henry R. & Mary A. Bayless

1° C.R.
Δ 3° 50'
T = 1501

47' x 89.0' P.T.

Mt. Head R.R. 7

T.2N.,R.10E.
5B-20-12

T.2N.,R.10E.,W.M.
5B-20-12

32
9
0.86

400' Sp
5° 6' 00"
a = 0.75

EQUATION
L' 72 + 898 PT.
L' 74 + 730 Ah =

77 + 95.3 P.I.
Δ = 0' 03" L.

81 + 05 - 12" Pipe, 32'

83 + 75 - 12" Pipe, 30'

87 + 40 P.O.T.

89 + 14 - 12" Pipe, 36'

91 + 18 P.O.T.

93 + 76 - 36" Pipe, 60'

94 + 12 - 8" Irrig. Pipe, 120'

95 + 46 - 12" Pipe, 50'
96 + 78.5 P.C.

3° C.L.
Δ = 10' 40"
T = 176.3'

100 + 34.1 P.I.

103 + 26 - 12" Pipe - 26'

N 48° 29' E
Deed R/W 10330
15.303 A

Mt. Hood R.R.
R.R. R/W Line 1

N. 28° 26' E

30
31 29
32

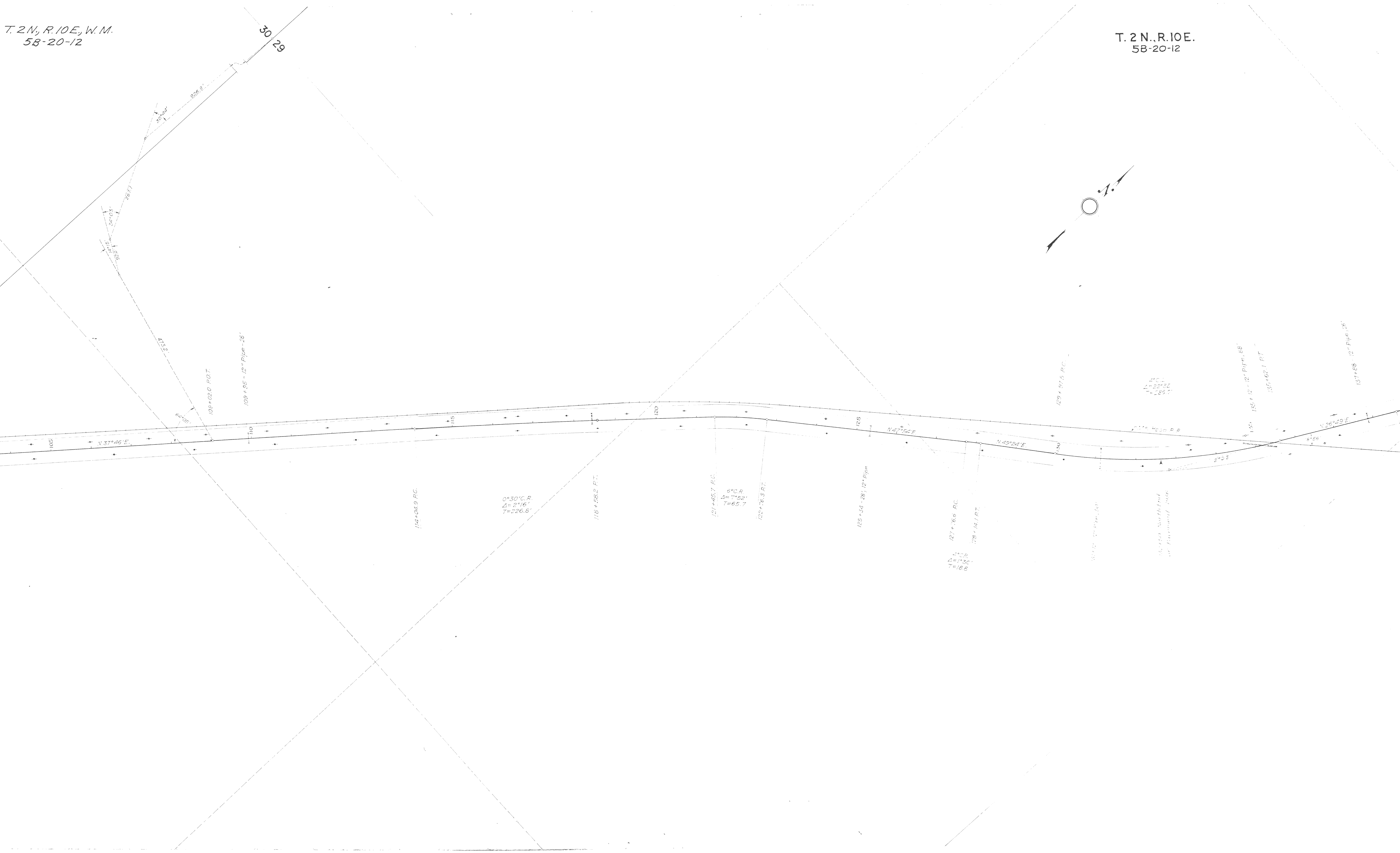
2" Iron Pipe Found

28.77
11.15
34.03
92.5

N. 37° 46' E

T. 2 N., R. 10 E., W. M.
5B-20-12

T. 2 N., R. 10 E.
5B-20-12



30 29

926.8'

2837'

813.2'

109+02.0 P.O.T.

109+95-12" Pipe-26'

114+04.0 P.C.

0°30' C.R.
Δ=2°16'
T=226.8'

118+58.2 P.T.

121+45.7 P.C.

6° C.R.
Δ=7°52'
T=65.7'

122+76.3 P.T.

125+34-28' 12" Pipe

127+36.6 P.C.

78° 14.1 P.T.

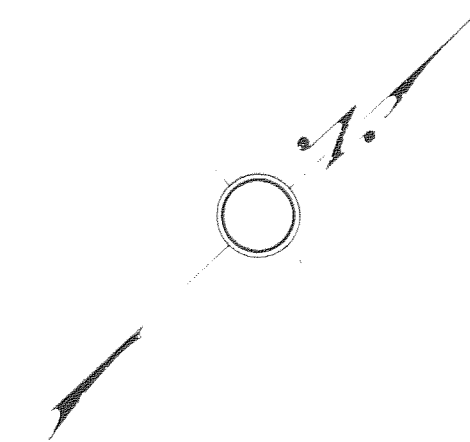
129+97.5 P.C.

240'
L=20'±
T=289.0'

135+10-12" Pipe-68'

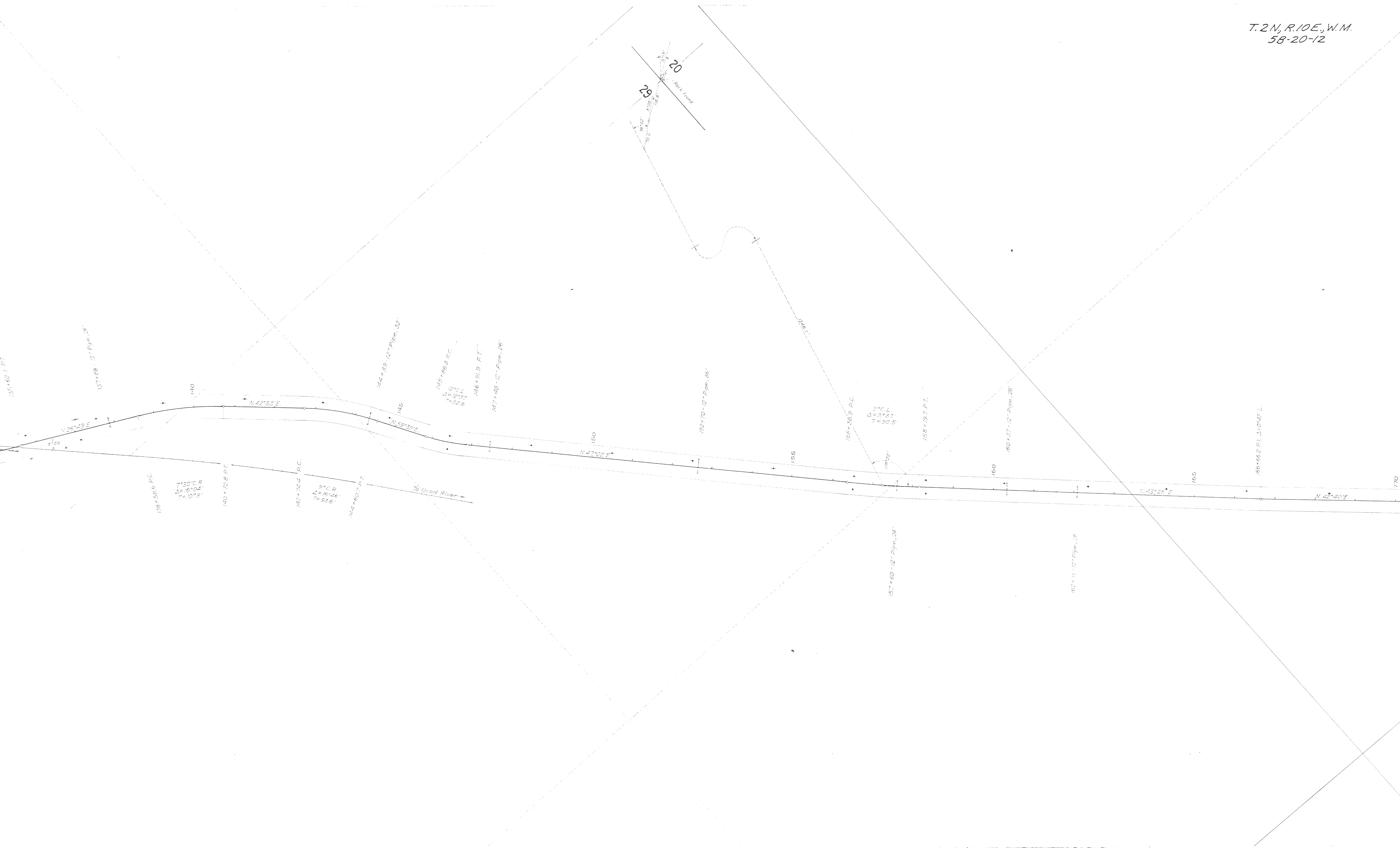
135+62.1 P.T.

137+68-12" Pipe-26'



Section 30-10-12-13

Section 30-10-12-13



135+62.1 P.T.

137+68.12" Pipe, 26'

138+56.6 P.C.

730° C. L.
Δ = 16° 02'
T = 107.8'

140+72.8 P.T.

142+74.4 P.C.

9° C. L.
L = 16° 46'
T = 93.6'

144+60.7 P.T.

To Hood River →

N 42° 53' E

N 59° 30' E

N 47° 02' E

N 43° 25' E

N 42° 40' E

144+59.12" Pipe, 32'

145+86.8 P.C.

12° C. L.
Δ = 12° 37'
T = 52.6'

146+91.9 P.T.

147+48.12" Pipe, 26'

20

29

Road found

152+70.12" Pipe, 36'

156+56.9 P.C.

2° C. L.
Δ = 3° 27'
T = 90.5'

158+19.7 P.T.

157+60.12" Pipe, 34'

160+57.12" Pipe, 28'

162+11.12" Pipe, 16'

165+56.2 P.L. Δ = 0° 45' L.

140

148

150

155

160

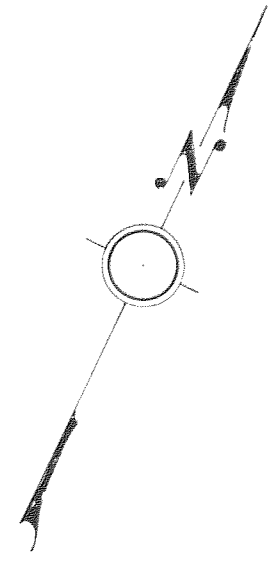
165

170

2N, R.10E, W.M.
58-20-12



T. 2 N., R. 10 E.
5B-20-12



Chas. H. Tunstall

J. J. and Mabel E. Krumenacher

Parcel No. 1 Deed R.W. 4806

Parcel No. 2 Deed R.W. 4806

J. J. and Mabel E. Krumenacher

J. J. and Mabel E. Krumenacher



9° C. R.
Δ = 27° 55'
T = 178.0

2° C. R.
Δ = 5° 37'
T = 140.6

2° C. L.
Δ = 8° 10'
T = 204.5

200+86.5 P.C.
200+512 P.T.
199+516 P.C.

2° I.P. Round

T. 2 N., R. 10 E., W. M.
5B-20-12

Gertrude B. Stickney
and
Tomi Okamura Kanemasa

Hood River County

235 + 27 - 12" Pipe, 30'

237 + 19 - 12" Pipe, 36'

240 + 67 - 12" Pipe, 38'

241 + 14.9 P.C.

7° C.L.
Δ = 14° 02'
T = 100.7

243 + 15.1 P.T.

245 + 62 - 12" Pipe, 27'

249 + 25.4 P.C.

19° C.L.
Δ = 38° 39'
T = 108.7

251 + 132.1 P.T.

16

15

21

22

N 98° 24' E

Deed R.W.-5420
Parcel No. 1
Deed RW-4666

240

N 80° 16' E

N 56° 74' E

145

N 72° 56' E

Deed R.W.-4758

N 33° 17' E

250

250 + 48 - 24" Pipe, 48'

253 + 77

6" Pipe, 40'

17° C.R.
Δ = 50° 59'
T = 160.7

257 + 230 P.T.

Deed R.W.-4840

Herman and Matilda Edstrom

Hood River County

238 + 60.0 P.C.

10° C.R.
Δ = 11° 52'
T = 59.6

239 + 78.7 P.T.

245 + 48.5 P.C.

2° 30' C.R.
Δ = 6° 42'
T = 134.2

247 + 50

249 + 16.5 P.T.

E.E. and Mary L. Gould

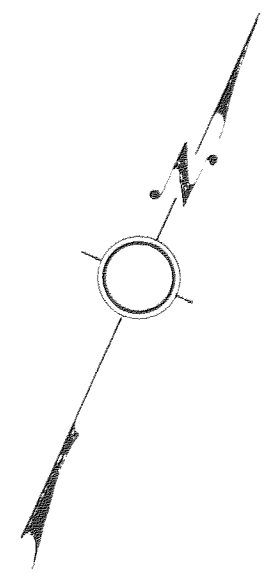
260 + 68 - 12" Pipe, 36'

262 + 75.0 P.T.

263 + 59 - 12" Pipe, 28'

Parc

T. 2 N., R. 10 E. W.M.
5B-20-12



Stock Pile Site
Sold to Hood River County
Plan # 26-192
Deed S-813
Drg.No. 1R-2-788

Parcel No. 2 Deed R.W.-4666

Pacific Power & Light Co.
Parcel No. 1
Deed R.W.-5119

Parcel No. 2
Deed R.W.-5119
Deed R.W.-4690

See 6B-26-20

EQUATION
275.888 P.P.T.
275.04.8 P.O.T.

Hood River County

Hood River County

Hood River County

Hood River County

Pacific Power and Light Co.
Maud and J.H.Frary
John C. Duckwall

John C. Duckwall

HOOD RIVER



TUCKER BRIDGE - DEE SECT.

HOOD RIVER HWY.

Scale: 1" = 100' December 1938

Drg. No. 5B-20-12

(Extra copy)
 Hwy. 281 1938
 Constructed Line
 Tucker Bridge - DEE

Hood River, Hwy.
 TUCKER BRIDGE - DEE SEC.

2B-594