

~~OREGON STATE HIGHWAY DEPARTMENT~~
~~Located Line~~
~~DEE ~ PARKDALE SECTION~~
~~HOOD RIVER SECONDARY No. 281~~
~~HOOD RIVER COUNTY~~

~~Scale: 1" = 100'~~ ~~Bearings True~~
~~J. E. Peck Res. Engr.~~ ~~1940.~~
~~T. I. N., R. 10 E., W. M.~~

OREGON STATE HIGHWAY DEPARTMENT
 Constructed Line
DEE ~ WOODWORTH ACRES SECTION
HOOD RIVER SECONDARY
 HOOD RIVER COUNTY

Scale: 1 in. = 100 ft Bearings True.
 J. E. Peck Des Engr November 1941.
 T. I. N. R. 10 E. W. M.

Contract No. 2480
 Station 37+28 to Station 203+50
 Work Commenced August 18, 1941
 Work Completed December 27, 1941

4F 16-11
 S.H. 1



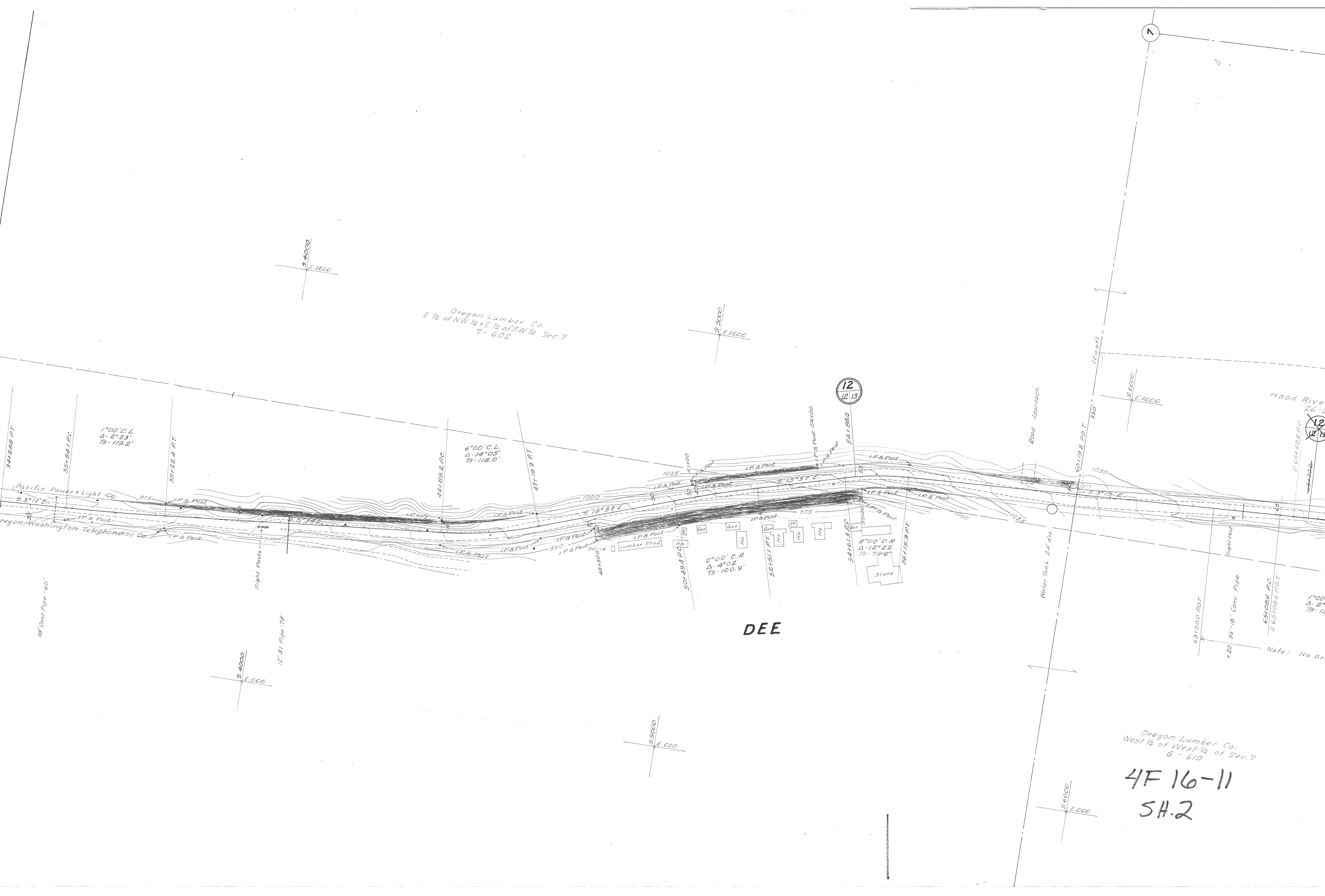
T. I. N. R. 10 E.
 T. I. N. R. 9 E.

Oregon Lumber Co.
E 1/2 of N.W. 1/4 + E. 1/2 of S.W. 1/4 Sec. 7
7-602

DEE

Oregon Lumber Co.
West 1/2 of West 1/2 of Sec. 7
G-610

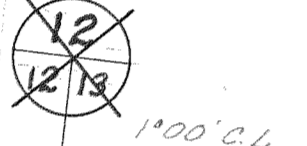
4F 16-11
SH.2



Note: No Gr.



Hood River County
26-24



100' C.L.
Δ = 2°06'
R = 105.0'

100' C.L.
Δ = 4°00'
R = 200.1'

500' C.L.
Δ = 13°38'
R = 137.0'

100' C.L.
Δ = 15°03'
R = 227.5'

100' C.P.
Δ = 2°47'
R = 139.2'

10° C.P.
Δ = 11°39'
R = 55.5'

Note: No Grading to be done from Sta. 63+50 to Sta. 130+00

Established from
Bearing Tree Fd.

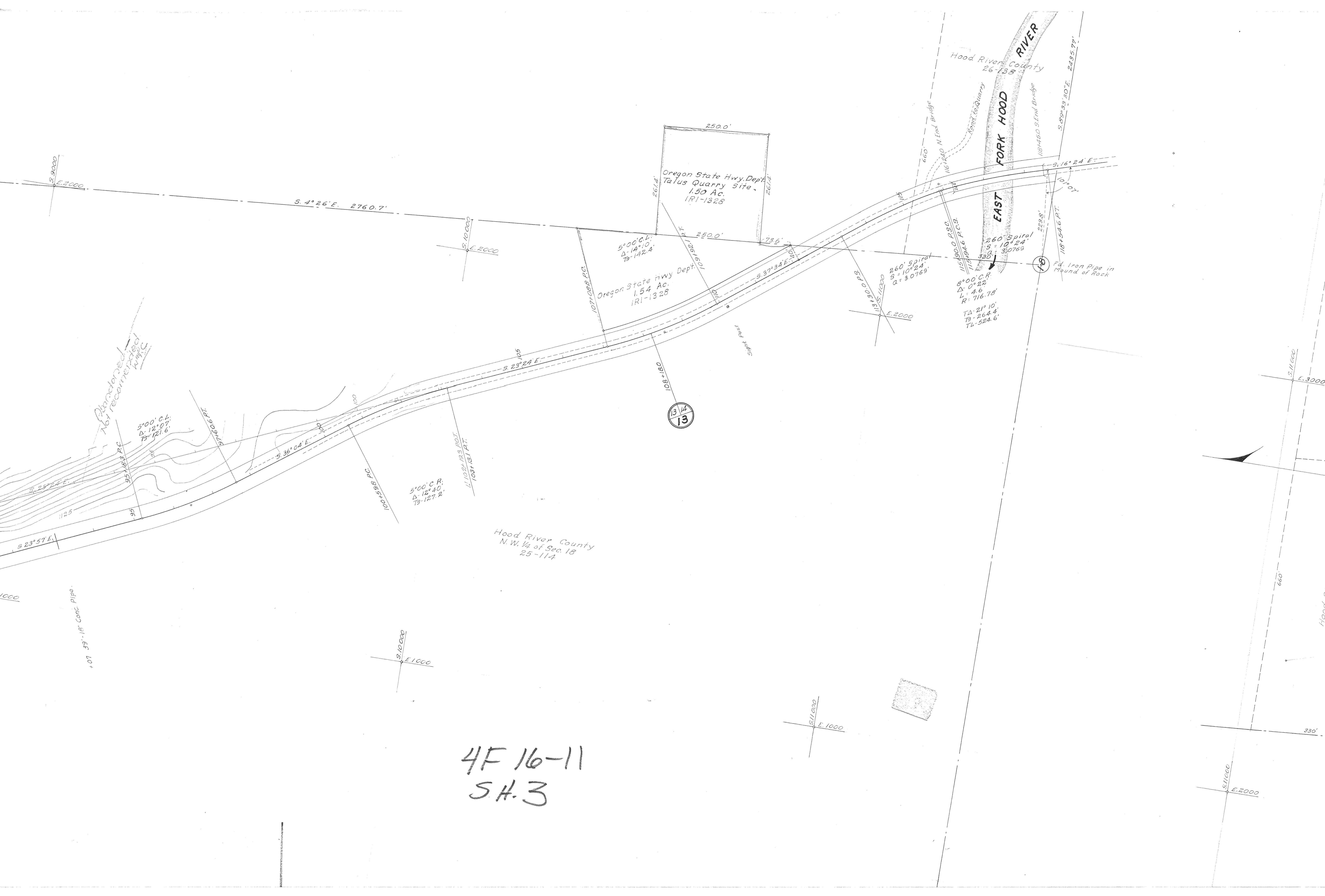
Abandoned
1st recon...

umber Co.
+ 1/2 of Sec. 7
10

o-11

+01 39'-18" Conc. Pipe

1654.9 to Per. Co. 12.18-7.18 Fd.



Oregon State Hwy Dept.
Talus Quarry Site.
1.50 Ac.
IRI-1328

Oregon State Hwy Dept.
1.54 Ac.
IRI-1328

Hood River County
N.W. 1/4 of Sec. 18
25-11A

Hood River County
26-133

EAST

260' Spiral
S = 10° 24'
L = 338'
a = 30769

8° 00' C.R.
Δ = 0° 22'
L = 4.6
R = 716.78

TΔ = 21° 10'
TΔ = 264.4
TL = 524.6

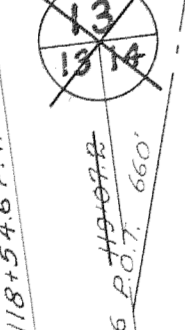
Fd. Iron Pipe in
Mound of Rock

4F 16-11
S.H. 3



Hood River County

Rock Quarry



MT HOOD R.R. (Parkdale Branch)
Trout Creek

End of No Grading Section

George H. Thomas
N.W. 1/4 of S.E. 1/4 + N.E. 1/4 of S.W. 1/4 Sec. 18
24-326

O.J. Severson
20-581

4F16-11
SH. 4

(S. 89° 33' 1/2" E. 2435.77')
(1217.85')

8° 00' C.L.
Δ: 24° 27'
S: 155.2'

10° 00' C.R.
Δ: 42° 17'
S: 221.6'

2° 00' C.L.
Δ: 8° 29'
S: 212.5'

S. 11000
E. 3000

S. 11000
E. 2000

S. 12000
E. 2000

S. 15000
E. 4000

S. 13000
E. 3000

(S. 6° 57' 30" E.) (2647.9')

Hood River County
26-188

18'

18

19

2009.47' to Sec. Cor. 17-18-19-20 Fd Iron Bolt

690' to Base of Cliff
330'

118° 51.2' P.O.S.T.
118° 54.6' P.T.
118° 28.6' P.O.S.T.
118° 28.6' P.O.S.T.
660'

120° 05.0' P.C.
120° 40.0' P.O.S.T.

3° 40' 00" P.O.S.T.
E. 3000

134° 00.8' P.O.S.T.
528.0'

136° 24.9' P.C.

141° 09.1' P.T.

4.00 48"-18" Conc. Pipe

4.50 48"-18" Conc. Pipe

12" 6.4" Pipe-30'

140.100

140.100

1200'

1225'

542.59'

141409.1' P.T.

1200'

141409.1' P.O.S.T.

141409.1' P.O.S.T.

141409.1' P.O.S.T.

141409.1' P.O.S.T.

141409.1' P.O.S.T.

141409.1' P.O.S.T.

141409.1' P.O.S.T.

141409.1' P.O.S.T.

141409.1' P.O.S.T.

141409.1' P.O.S.T.

141409.1' P.O.S.T.

141409.1' P.O.S.T.

141409.1' P.O.S.T.

141409.1' P.O.S.T.

141409.1' P.O.S.T.

(S. 88° 29' E.)

remain Existing 7W

IP 8 Post

IP 8 Post

IP 8 Post

IP 8 Post

IP 8 Post

IP 8 Post

IP 8 Post

IP 8 Post

IP 8 Post

IP 8 Post

IP 8 Post

IP 8 Post

IP 8 Post

IP 8 Post

IP 8 Post

IP 8 Post

IP 8 Post

IP 8 Post

IP 8 Post

IP 8 Post

IP 8 Post

IP 8 Post

IP 8 Post

IP 8 Post

IP 8 Post

IP 8 Post

IP 8 Post

IP 8 Post

IP 8 Post

17-18-19-20 Rd Iron Bolt

S 14000
E 4000
(S 88° 05' E) (1233.4')

S 14000
E 4000

S 14000
E 4000

Fred + Lottie Maurer
South 1/2 of S.E. 1/4 of N.E. 1/4 Sec. 19
26-287 + 28-10
Sold on Contract to Ted Lowe

ON R/W to be Abandoned

(1333.35')

14
14.15

(S 2° 19' W) (2666.7')

To Parkdale

2° 00' C.L.
Δ 14° 50'
Σ 373.0'

14
14.15

S 7° 03' E

S 14000
E 3000

+00 38" 18" Conc. Pipe.

Hood River County
N.W. 1/4 of N.E. 1/4 Sec. 19
25-120
Sold on Contract to Grace I. Wright

S 15000
E 3000

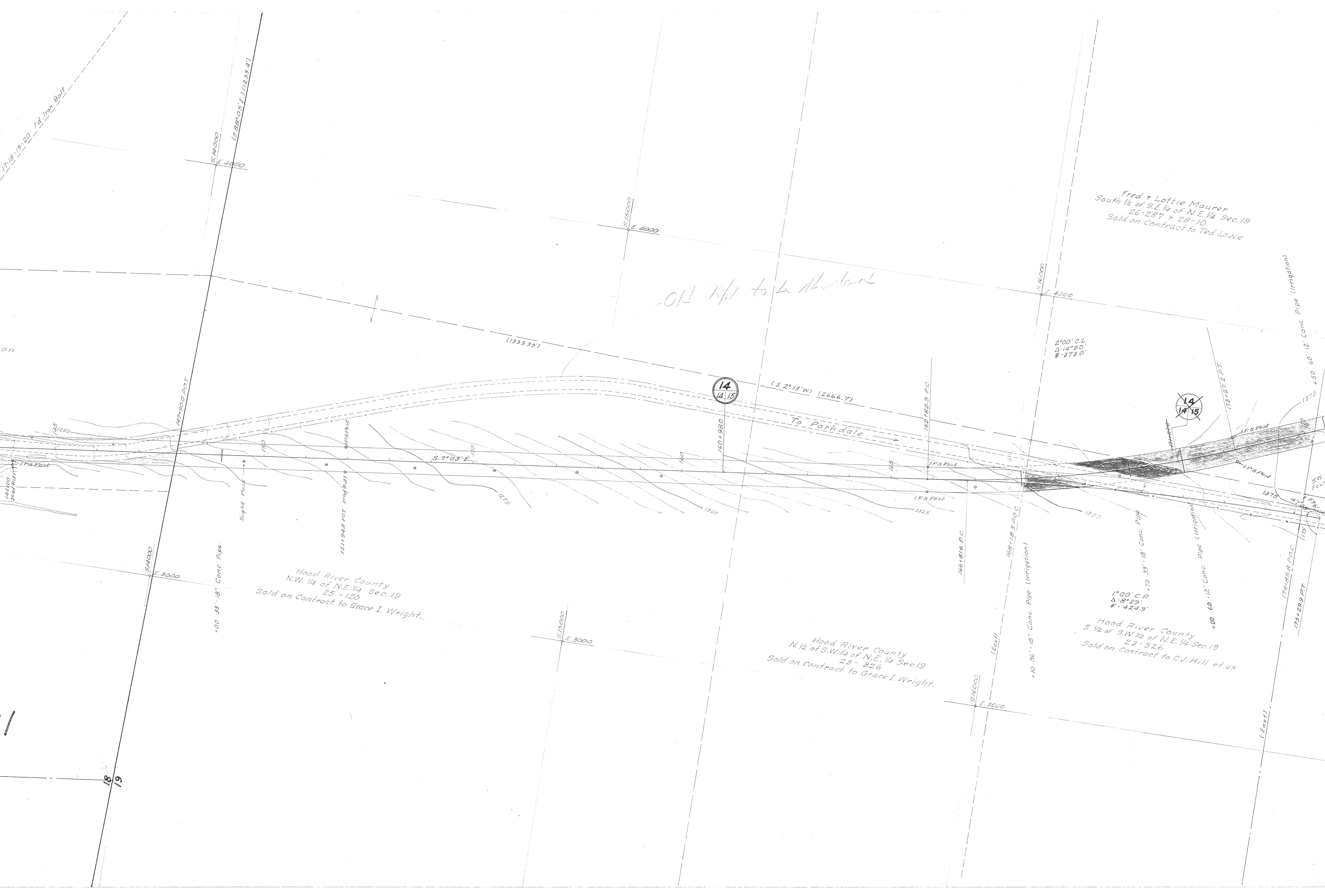
Hood River County
N. 1/2 of S.W. 1/4 of N.E. 1/4 Sec. 19
23-326
Sold on Contract to Grace I. Wright

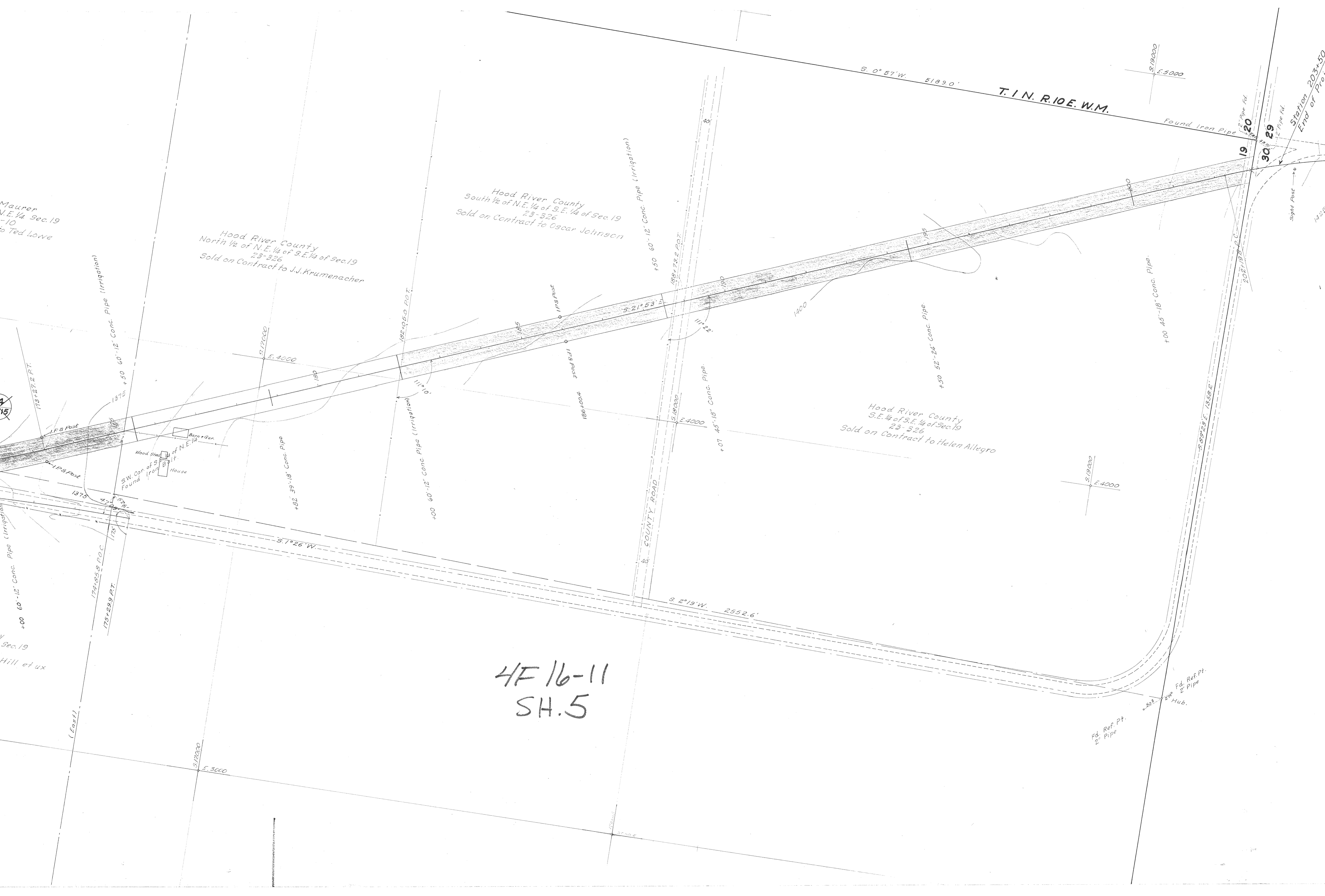
S 14000
E 3000

Hood River County
S. 1/2 of S.W. 1/4 of N.E. 1/4 Sec. 19
23-326
Sold on Contract to C.J. Hill et ux

18
19

(East)







Station 203+50
End of Project

19+20
30+29

Iron Pipe
2" Pipe Fd.
2" Pipe Fd.

Sight Post →

14.25

20.5

4°00' C.R.
Δ - 21°52'
W - 276.7'

207+66.5 P.T.

R12+050 P.O.T.

50°01'E

S.20000
E.5000

S.20000
E.4000

ref. Pt.
ipe