

OREGON STATE HIGHWAY DEPARTMENT  
 RELOCATED LINE  
**DEE-JERICO LANE SECTION**  
**HOOD RIVER SECONDARY No. 281**  
 HOOD RIVER COUNTY

Scale: 1"=100' April 1937

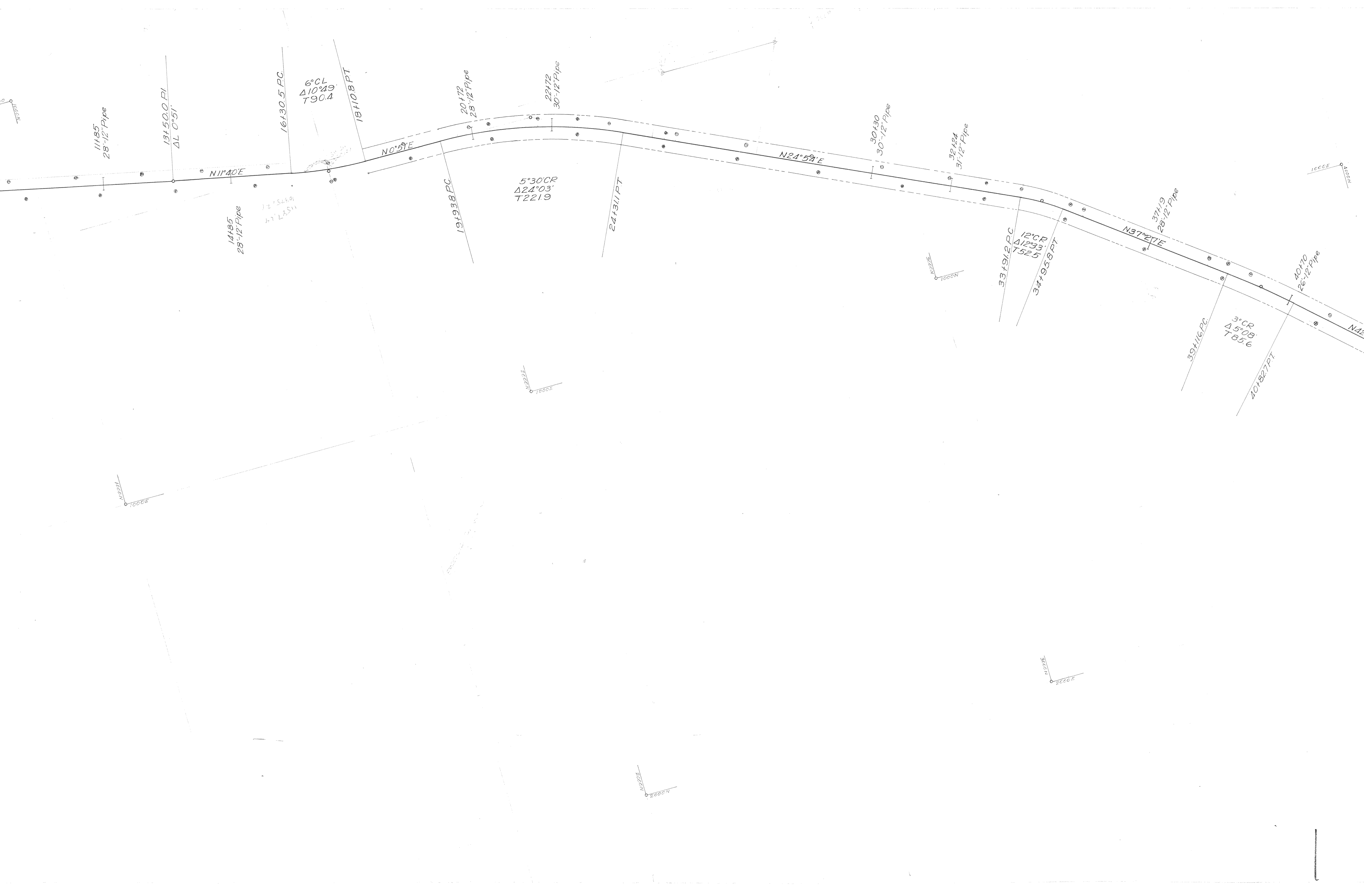
Legend  
 ○ Power Poles  
 ● Telephone Poles

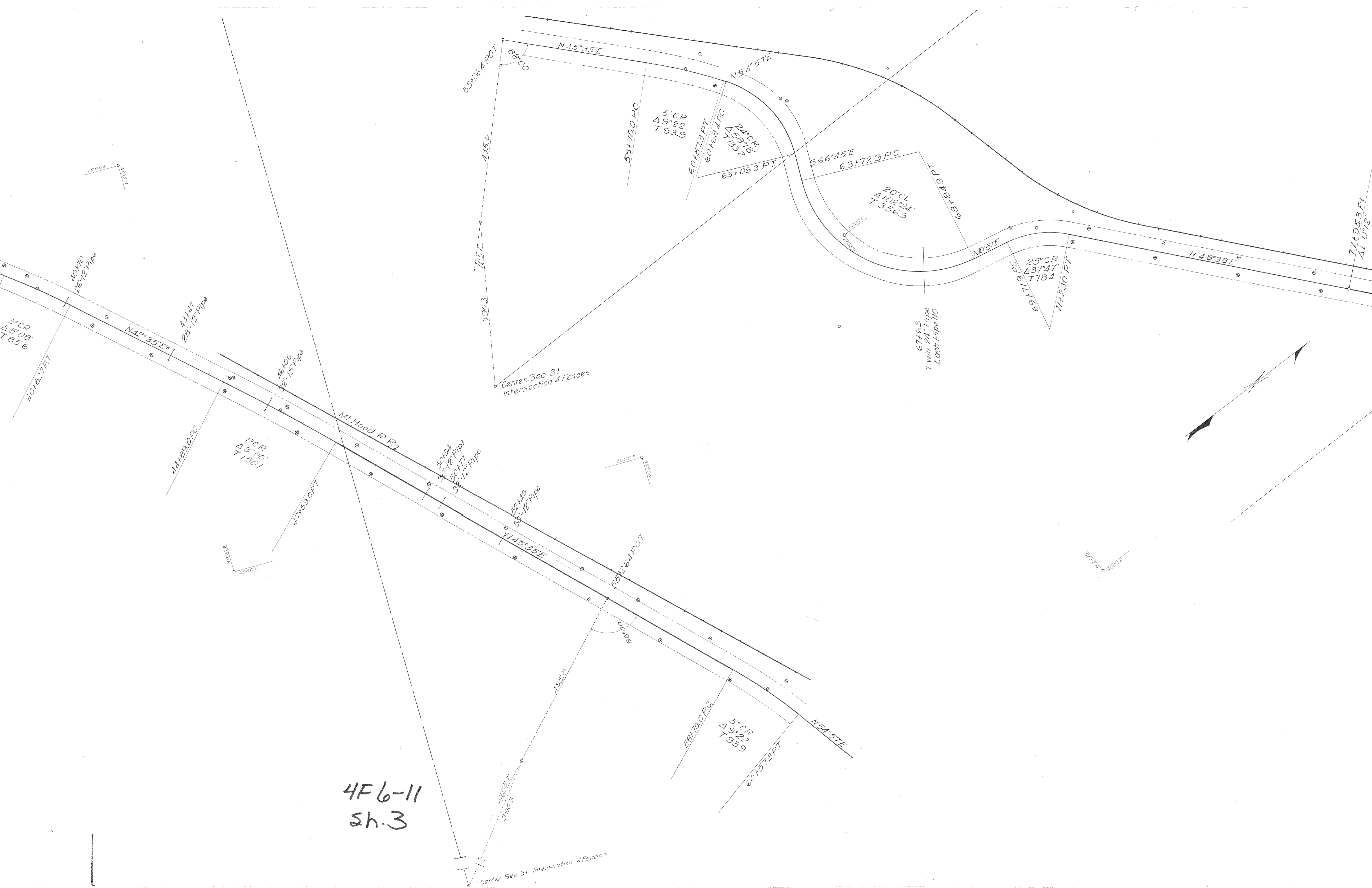
4F 6-11  
 sh. 1



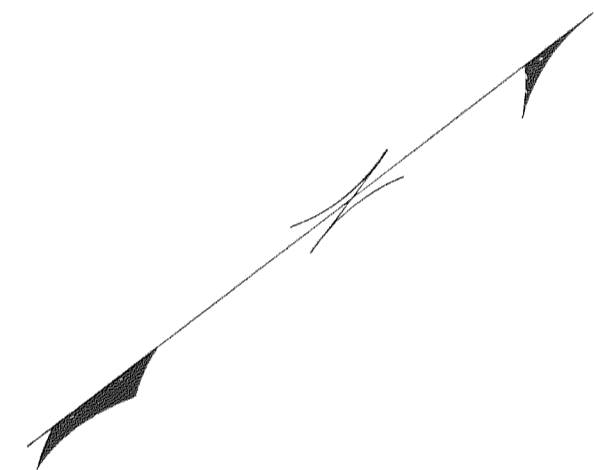


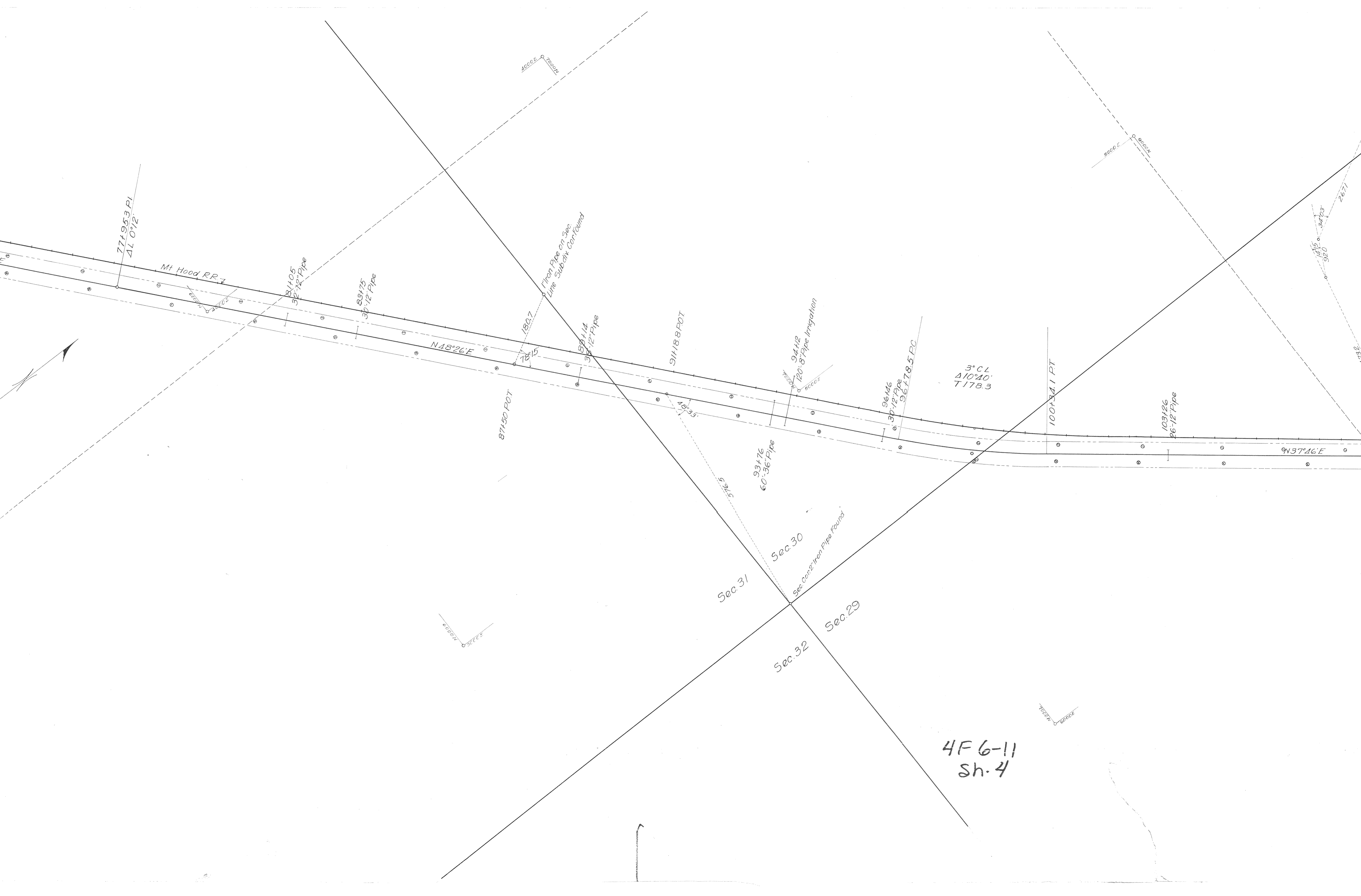
4F 6-11  
Sh. 2





4F6-11  
sh.3





771953 PI  
ΔL 0'12"

Mt Hood RR

81405  
32'-12" Pipe

83175  
30'-12" Pipe

N 48° 26' E

87150 POT

Iron Pipe on Sec.  
Line Substit. Contour

88114  
30'-12" Pipe

91188 POT

94412  
120' x 8' Pipe Irrigation

96146  
30'-12" Pipe  
96178.5 FC

3° CL  
Δ10'40"  
T 178.3

100' x 41' PT

103126  
26'-12" Pipe

91° 37' 46" E

Sec. 31  
Sec. 30  
Sec. 32  
Sec. 29  
Sec. Cont. Iron Pipe Found

4F6-11  
Sh. 4

4000 E  
7000 N

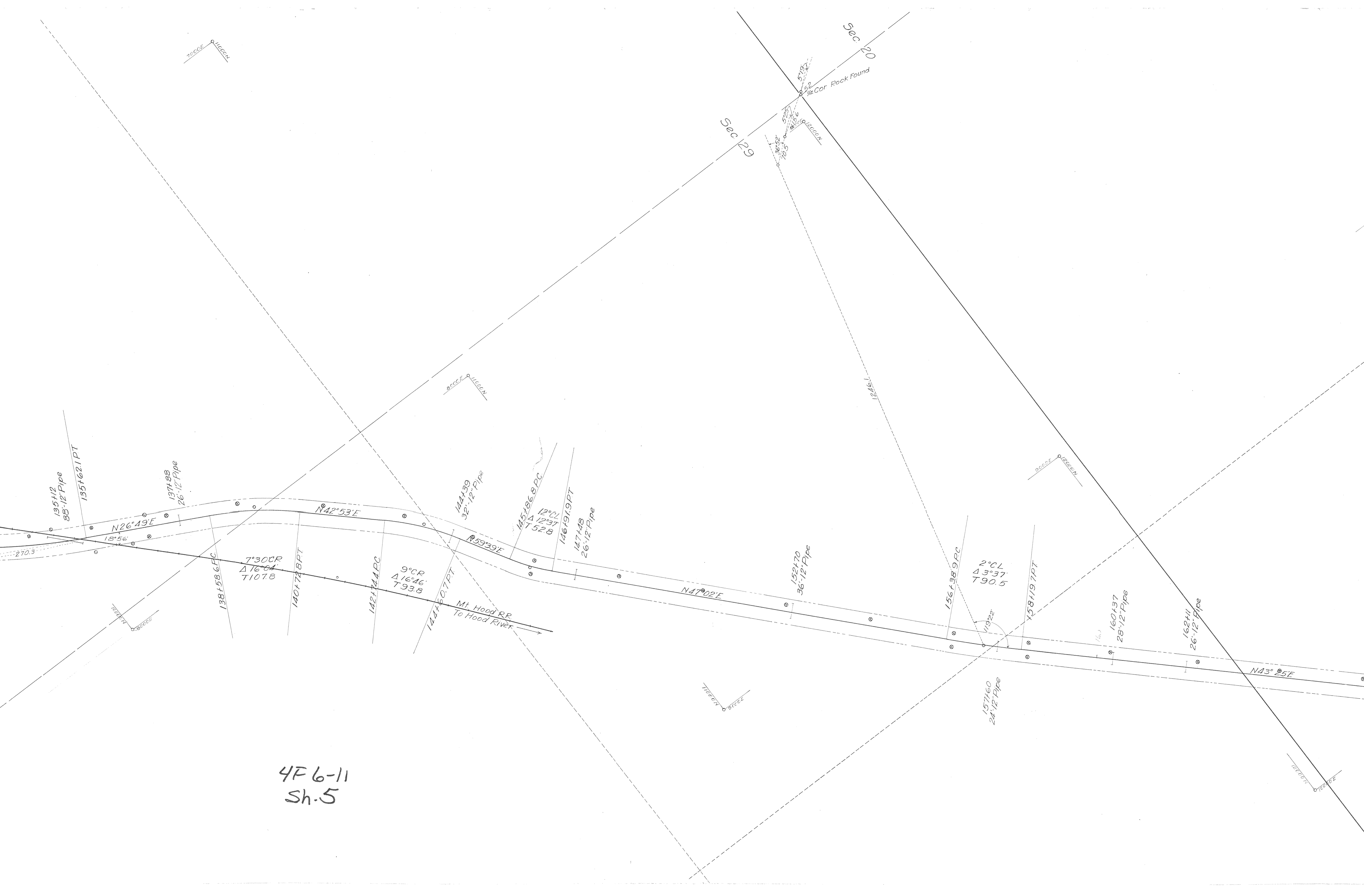
5000 E  
8000 N

33228  
11000 N

3000 N  
2000 E

1415  
920  
2671





70000  
90000

Sec 29

Sec 20

1/4 Cor Rock Found

135+12  
88'-12" Pipe

135+62.1 PT

137+88  
26'-12" Pipe

N26°49'E  
18°56'

7°30' CR  
Δ 16°04'  
T 107.8

138+58.6 FC

140+72.8 PT

9° CR  
Δ 16°46'  
T 93.8

142+74.4 PC

144+50.7 PT

Mt. Hood RR  
To Hood River

144+39  
32'-12" Pipe

12° CR  
Δ 12°37'  
T 52.8

145+26.8 PC

146+19.9 PT

147+45  
26'-12" Pipe

N47°02'E

152+70  
36'-12" Pipe

2° CR  
Δ 3°37'  
T 90.5

156+38.9 PC

158+19.7 PT

160+37  
28'-12" Pipe

162+11  
26'-12" Pipe

N43°25'E

157+60  
24'-12" Pipe

4F6-11  
Sh. 5



9000E  
0.2000N

10000E  
0.2000N

10000E  
0.2000N

11000E  
0.2000N

11000E  
0.2000N

N43°25'E

N42°40'E

N45°40'E

449.1

177442.9PC  
13°CL  
Δ26°39'  
T103.2

1794470.PT

182447.PC  
20°CL  
Δ50°41'  
T135.7

1854011.PT

N50°30'E

N6°11'W

166466.2PI  
Δ10°45'

170456  
28'-12" Pipe

170196.7PC  
2°CR  
Δ3°00'  
T75.1

172146.7PT

1734472.PC

174399.PT

177°02'E

177°02'E

To Cor. 1"

Sec 20

Sec 21

1/4 Cor. 1" Iron Pipe Found

1/4 Cor. 1" Iron Pipe Found

Black Gum incorrectly written  
Old Line O.F.

1048016.PT

197111

195724.PT

4F(6-1)  
Sh. 4





Black Gum Ironworks, 1877  
Old Line O.K.

11°CR  
Δ28°05'  
T130.2

8°CR  
Δ27°55'  
T118.0

2°CR  
Δ5°57'  
T140.6

10°CR  
Δ1°52'  
T59.6

203141.8PT

208153.7PC

214177PC

217158.5PT

218177  
54'-16" Pipe

224120.5PC

Hood River County

J.J. & Mabel E. Krumenacker  
Iron Pipe and Post

Chas. H. Tomstall  
Iron Pipe and Post

J.J. & Mabel E. Krumenacker  
Iron Pipe and Post

J.J. & Mabel E. Krumenacker  
Iron Pipe and Post

1/4" Con 2" Iron Pipe Found

4F 6  
5h

13600E  
13600W

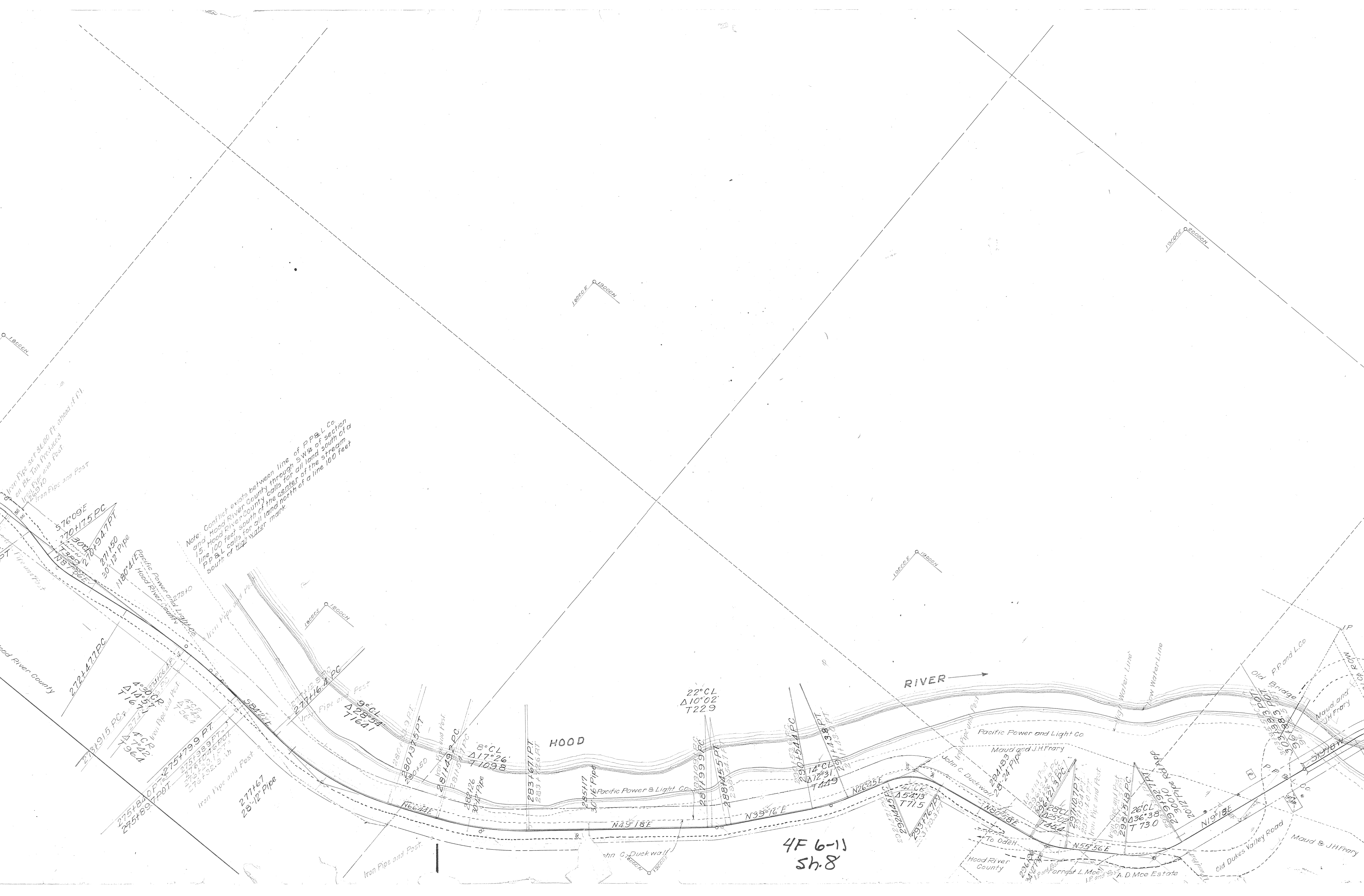
16000E  
13000W

17000E  
13000W

17000E  
17000W

4F6-11  
sh.7





Note: Conflict exists between line of P.P. & L. Co. and Hood River County through S.W. 1/4 of section 15. Hood River County calls for oil land south of a line 100 feet south of the center of the stream. P.P. & L. calls for oil land north of a line 100 feet south of high water mark.

4F 6-11  
sh. 8

182026 E 182026 N

182026 E 182026 N

182026 E 182026 N

22° CL  
Δ 10° 02'  
T 229

8° CL  
Δ 17° 26'  
T 109.8

74° CL  
Δ 12° 31'  
T 44.9

26° CL  
Δ 36° 38'  
T 730

576° 09' E

272° 47' PC

4° 30' CR  
Δ 17° 54'  
T 7.22

275° 47' 99' PT

277° 47' PT

9° CL  
Δ 2° 55'  
T 7.64

280° 13' 15' PT

281° 49' PC

283° 46' 71' PT

285° 17' PT

287° 19' 99' PC

288° 45' 57' PT

290° 15' 41' PC

291° 53' 13' PT

293° 45' 13' PT

295° 45' 13' PT

297° 45' 13' PT

299° 45' 13' PT

301° 45' 13' PT

303° 45' 13' PT

305° 45' 13' PT

307° 45' 13' PT

309° 45' 13' PT

311° 45' 13' PT

278° 15' PC

279° 15' PC

280° 15' PC

281° 15' PC

282° 15' PC

283° 15' PC

284° 15' PC

285° 15' PC

286° 15' PC

287° 15' PC

288° 15' PC

289° 15' PC

290° 15' PC

291° 15' PC

292° 15' PC

293° 15' PC

294° 15' PC

295° 15' PC

296° 15' PC

297° 15' PC

298° 15' PC

299° 15' PC

300° 15' PC

301° 15' PC

275° 18' 00' PT

275° 18' 00' PT

275° 18' 00' PT

275° 18' 00' PT

275° 18' 00' PT

275° 18' 00' PT

275° 18' 00' PT

275° 18' 00' PT

275° 18' 00' PT

275° 18' 00' PT

275° 18' 00' PT

275° 18' 00' PT

275° 18' 00' PT

275° 18' 00' PT

275° 18' 00' PT

275° 18' 00' PT

275° 18' 00' PT

275° 18' 00' PT

275° 18' 00' PT

275° 18' 00' PT

275° 18' 00' PT

275° 18' 00' PT

275° 18' 00' PT

275° 18' 00' PT



of Way



Geo. P. and Julia Coe

58+53 24'-12" Pipe Rd App

57+32 36'-12" Pipe

52+31.40'-12" Pipe Rd App

51+50.07  
80' R  
1476  
1256

Geo. and EK Goodwin

Russell H and Marjorie M Nichols

S. End Road Mix Paved 1935

Edward and Myrtle Hobson

L.E. Hogland

SE Nesbit  
C.E. Nesbit

F.H. Isenberg

S 0°12'E

13°30'CL  
444'40"  
1744

Iron Pipe and Post  
61+37.6 PC  
81+3 3/4 PT

55+01 20'-12" Pipe Rd App

C. King and Edna Benton

Iron Pipe and Post  
Iron Pipe and Post

Iron Pipe and Post  
48+90.6 PI  
41 2'43"

45+56.4 POT  
45+48.9 POT End Oil

42+26.9 PI  
41 0'11"

38+74 30'-24" Pipe

Advent Church

Blanche Actee

State Land Board

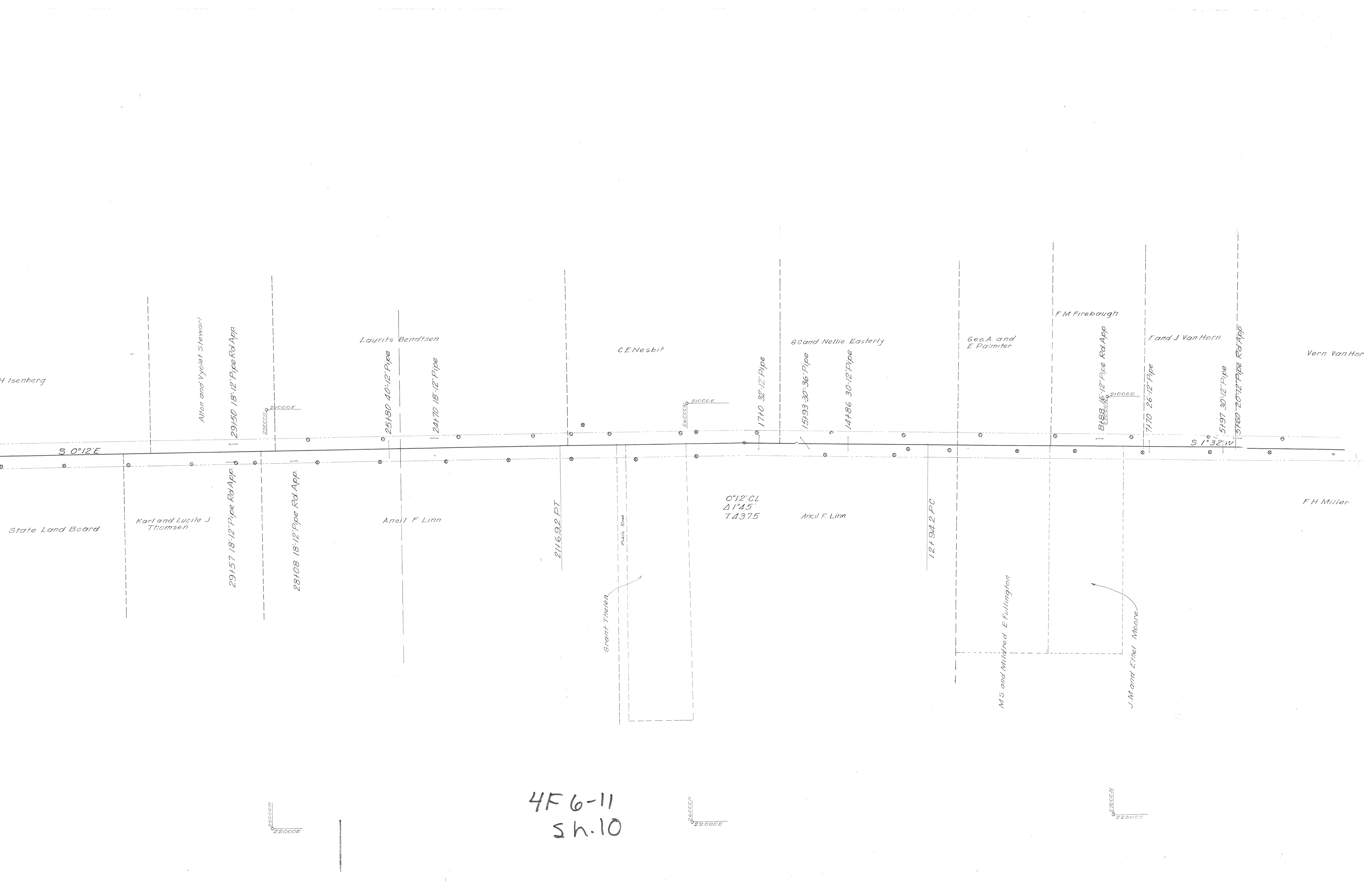
4F6-11  
Sh. 9



220022  
220022

220022  
220022

220022  
220022



4F6-11  
sh.10

Vern Van Horn

F H Miller

5760 20712 Pipe Rd App.

0+00 End Oil  
N. End Road Mix Pa d 1935

21000E  
28000N

22000E  
28000N

