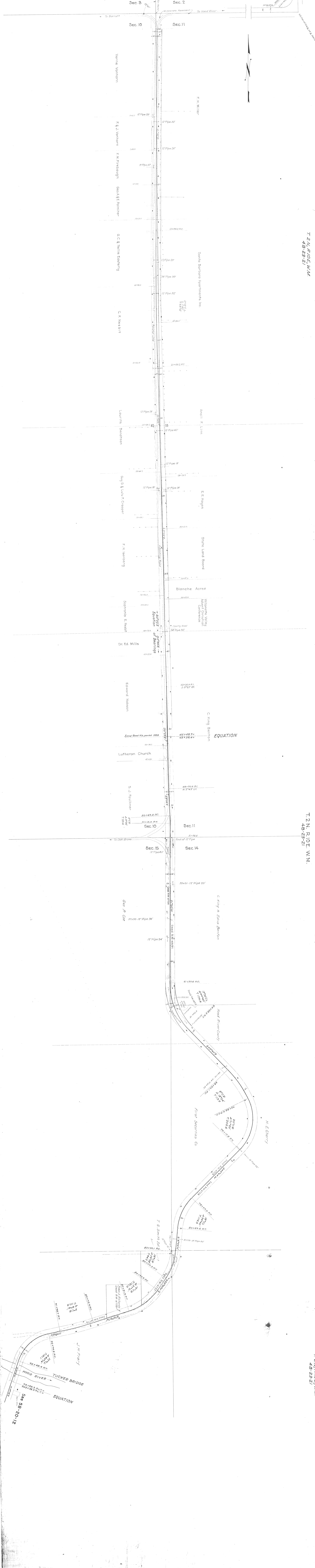


OREGON STATE HIGHWAY DEPARTMENT  
 Roadbed Line  
**JERICHO LANE SECTION**  
 HOOD RIVER HIGHWAY  
 HOOD RIVER COUNTY  
 April, 1935.  
 Scale 1"=100'  
 D88M4832



T 2 N. R. 10 E. W. M.  
48-23-21

T 2 N. R. 10 E. W. M.  
48-23-21

T 2 N. R. 10 E. W. M.  
48-23-21