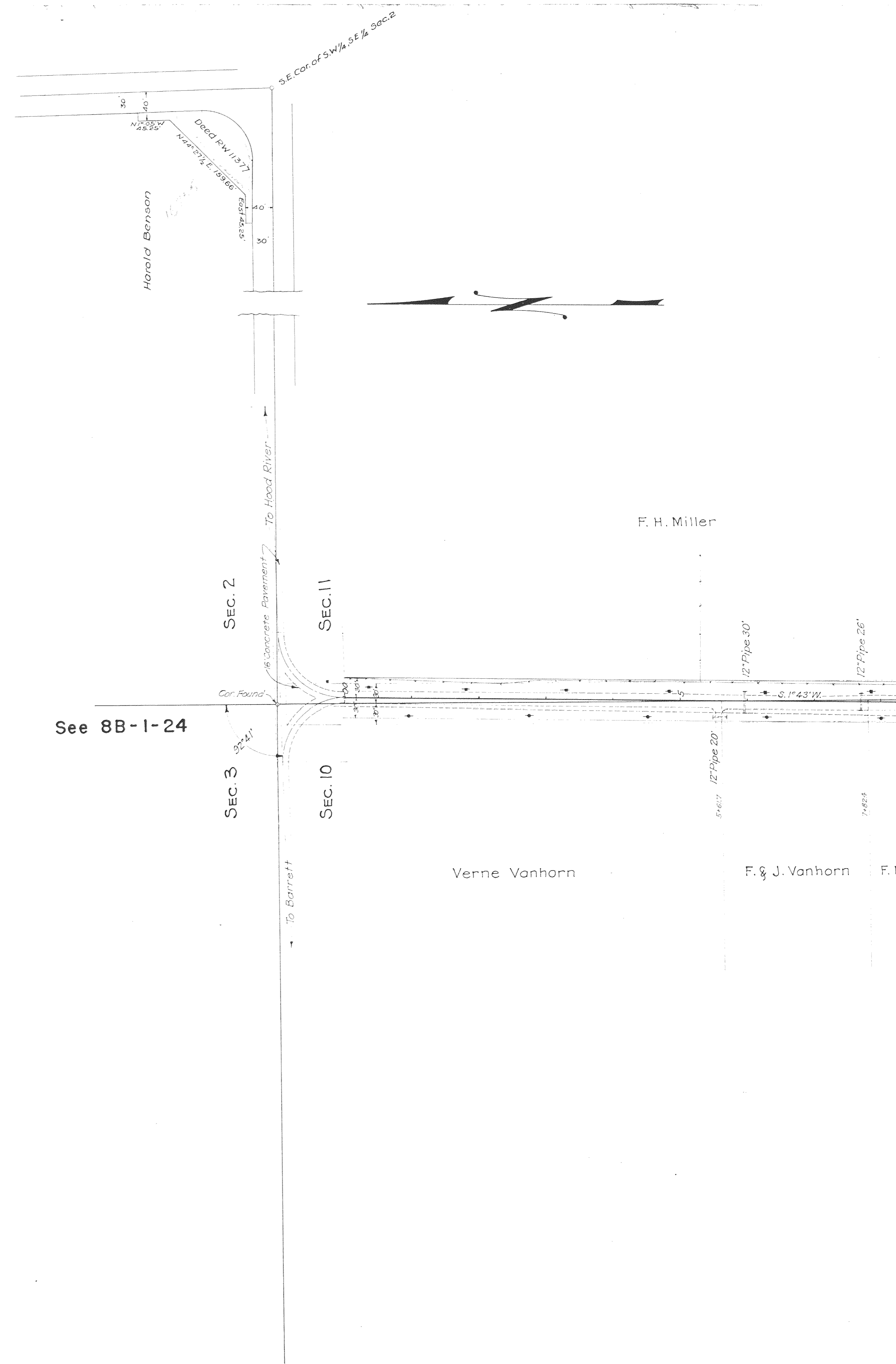


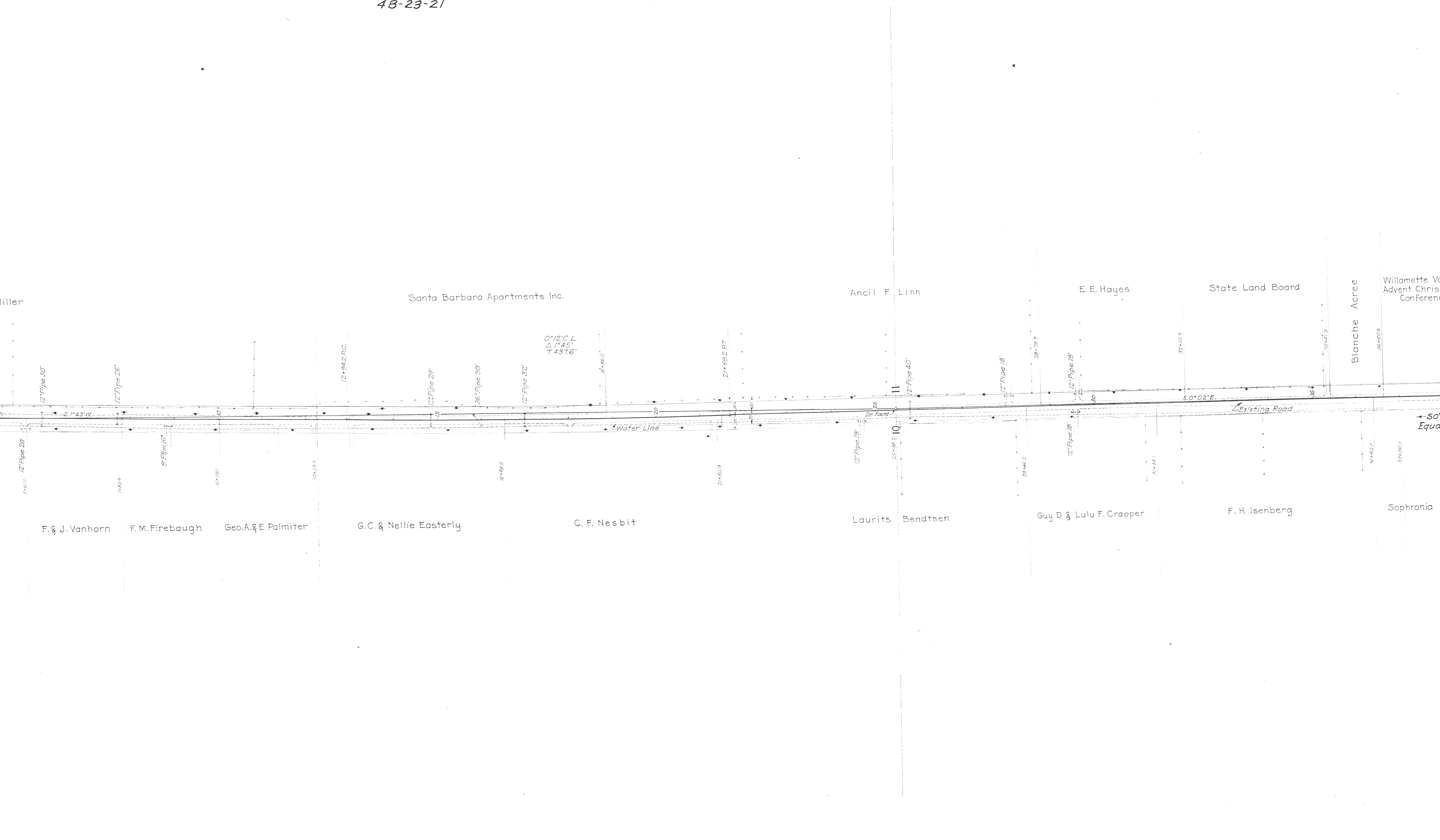
NB-53-51

JERICO LANE SECTION
HOOD RIVER HIGHWAY
HOOD RIVER COUNTY

OREGON STATE HIGHWAY DEPARTMENT
Relocated Line
JERICO LANE SECTION
HOOD RIVER HIGHWAY
HOOD RIVER COUNTY
Scale 1"=100' April, 1935.
DRG.No.4B-23-21



T. 2 N., R. 10 E., W. M.
4B-23-21



Santa Barbara Apartments Inc.

Ancil F. Linn

E. E. Hayes

State Land Board

Blanche Acree

Willamette Valley
Advent Christian
Conference

Miller

F. & J. Vanhorn

F. M. Firebaugh

Geo. A. & E. Palmiter

G. C. & Nellie Easterly

C. F. Nesbit

Laurits Bendtsen

Guy D. & Lulu F. Crapper

F. H. Isenberg

Sophonra

0° 12' C.L.
Δ 1° 45'
T 437.6'

Water Line

Existing Road

5.0° 02' E.

Cor. Found

50' Equa

12" Pipe 30'

12" Pipe 26'

12" x 54.2 R.C.

12" Pipe 29'

36" Pipe 30'

12" Pipe 32'

18" x 6" 0"

21+69.2 RT

12" Pipe 40'

12" Pipe 18'

12" Pipe 18'

32+40.3

35+41.3

35+46.4

5+61.7 12" Pipe 20'

7+82.4

8" Pipe 16'

10+03.7

12+23.9

16+48.2

21+50.9

12" Pipe 18'

25+48.2 10

28+46.2

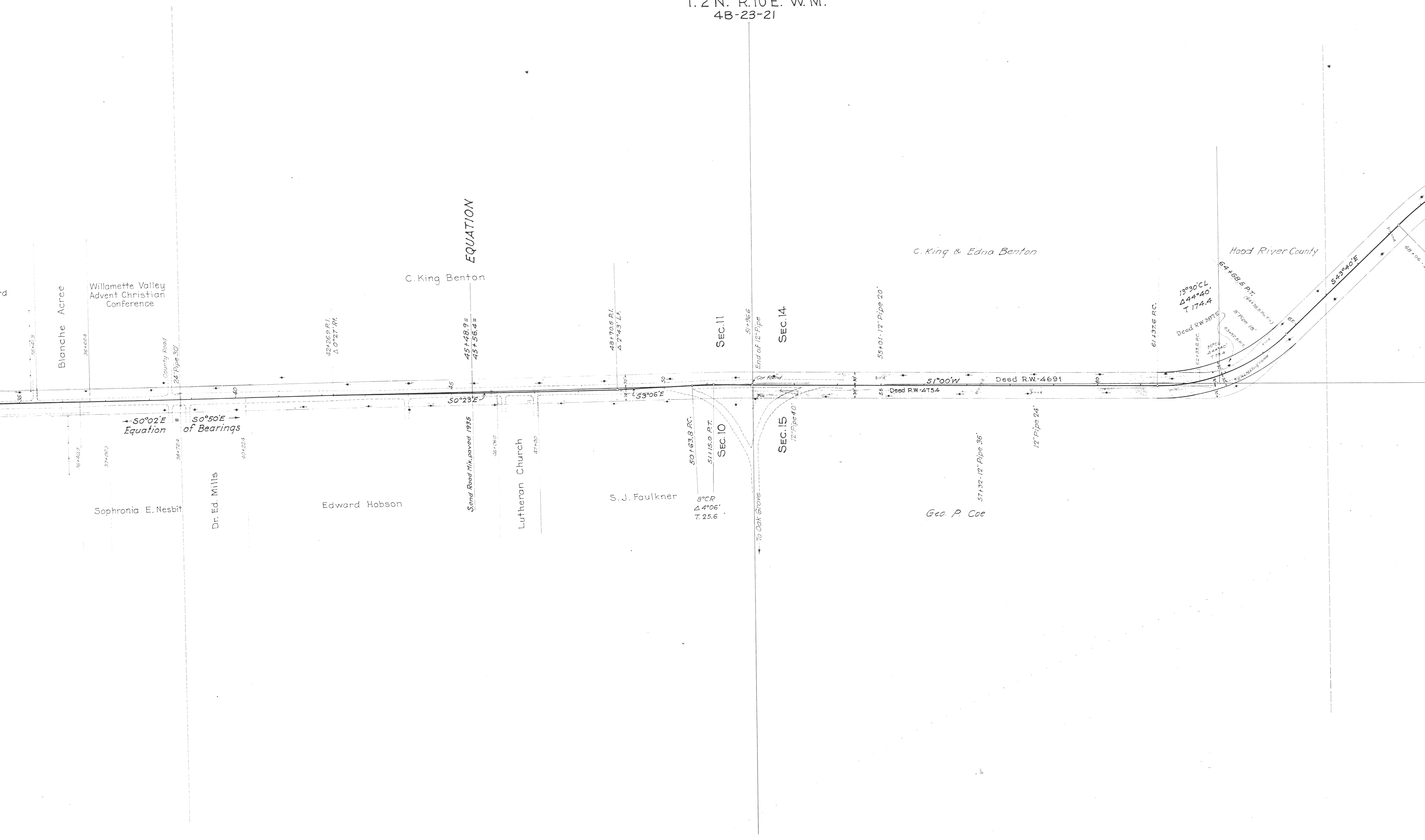
12" Pipe 18'

31+44.1

36+40.3

37+06.3

T.2 N. R.10E. W.M.
4B-23-21



Blanche Acree
Willamette Valley
Advent Christian
Conference

C. King Benton

C. King & Edna Benton

Hood River County

Sophonra E. Nesbit

Dr. Ed. Mills

Edward Hobson

Lutheran Church

S. J. Faulkner

Geo. P. Coe

EQUATION

SEC. 10

SEC. 11

SEC. 15

SEC. 14

← 50°02'E
Equation
50°50'E →
of Bearings

8° CR
Δ 4° 06"
T. 25.6

13°30' CL
Δ 44°40'
T 174.4

End of 12" Pipe

To Oak Grave

Deed R.W.-4691

Deed R.W.-4754

Deed R.W. 3875

543°40'E

64+68.5 P.T.

61+37.6 PC.

57+32.12" Pipe 36'

12" Pipe 24'

55+01.12" Pipe 20'

51+36.6

48+90.6 P.I.
Δ 2°43' L.A.

45+48.9 =
45+56.4 =

42+26.9 P.I.
Δ 0°27' R.A.

County Road
24" Pipe 30'

37+06.3

58+72.1

40+22.4

46+09.0

47+00

50

38

36

34

32

30

28

26

24

22

20

18

16

14

12

10

8

6

4

2

0

35

35

35

35

35

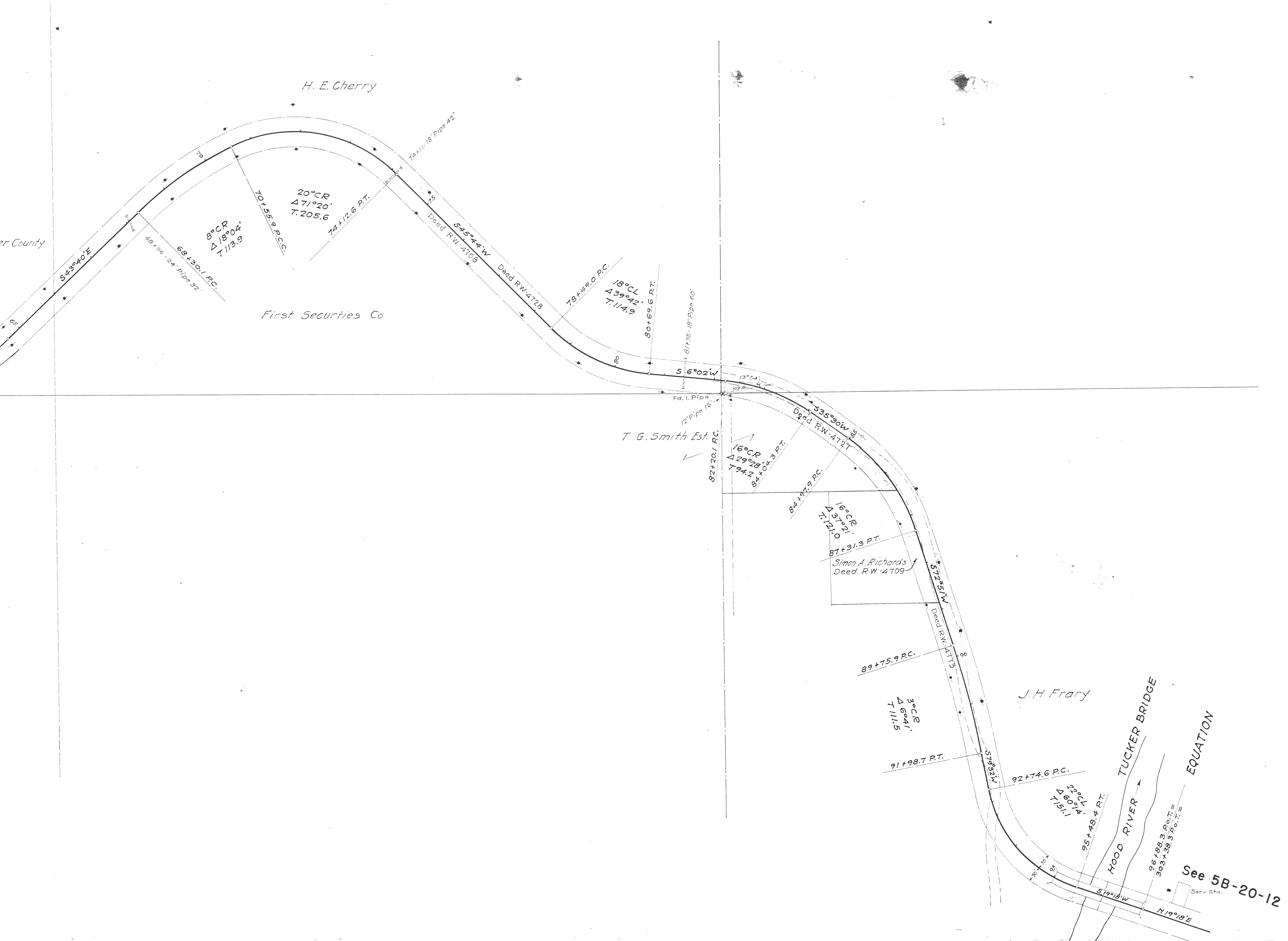
35

35

35

35

35



See 5B-20-12