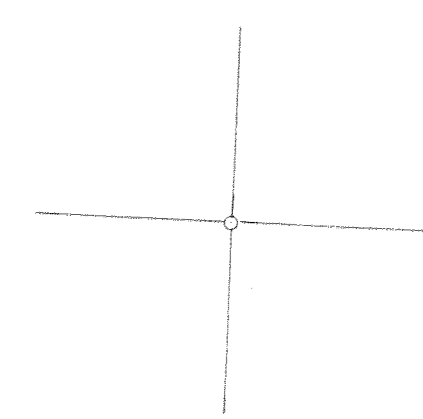
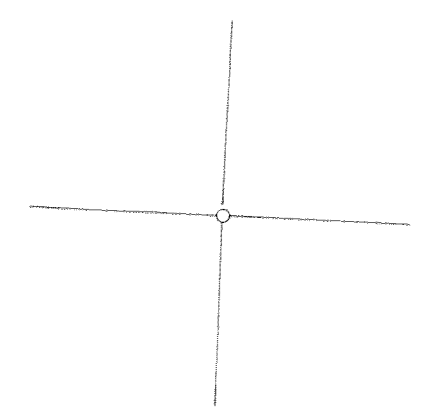
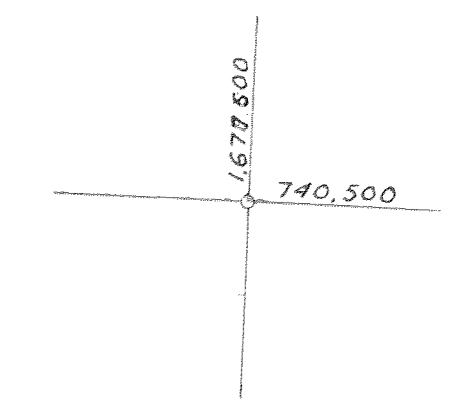
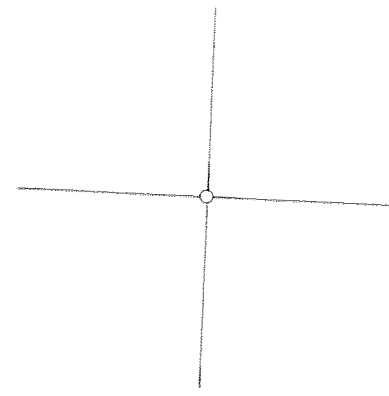
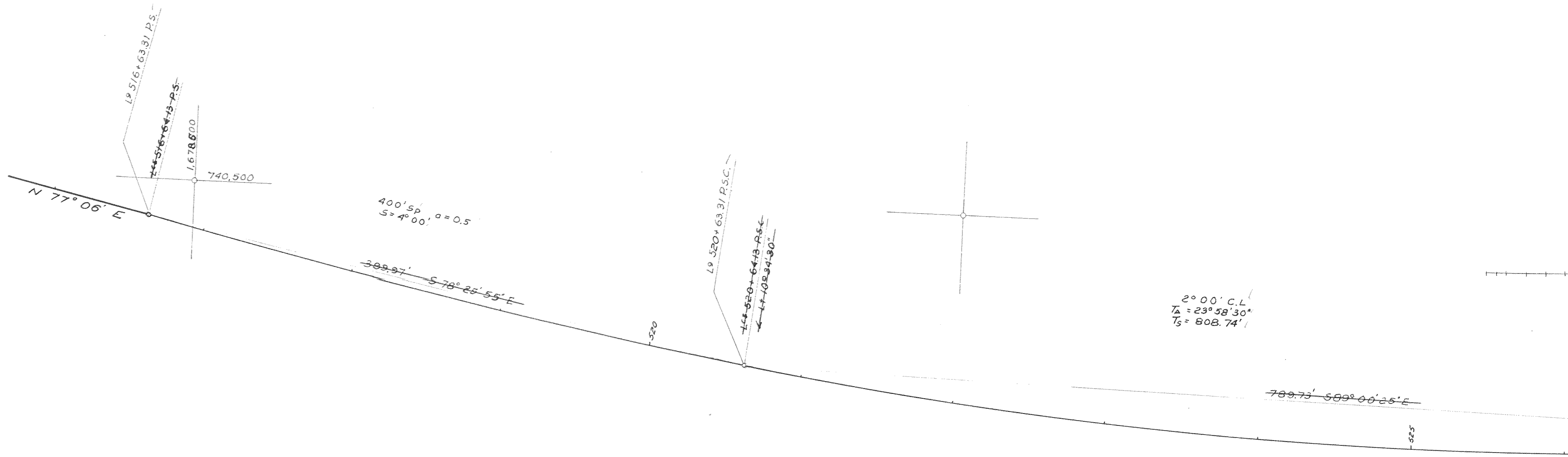
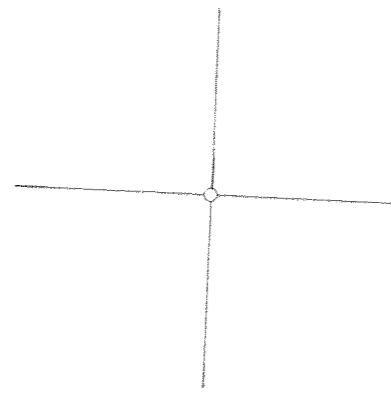


OREGON STATE HIGHWAY DEPARTMENT
LOCATED LINE DETAIL MAP
SHELL ROCK MOUNTAIN UNIT
CASCADE LOCKS - VIENTO SECTION
COLUMBIA RIVER HIGHWAY
Sta 516 to Sta 600
HOOD RIVER COUNTY
OCTOBER, 1959
SCALE: 1" = 50'

H.S. COULTER
RES. ENGINEER

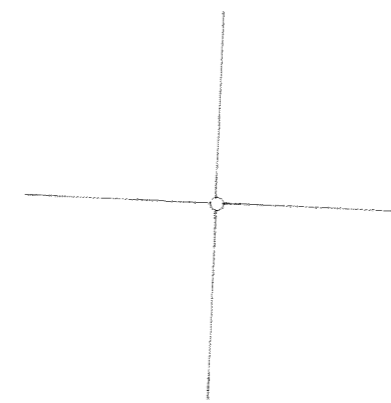
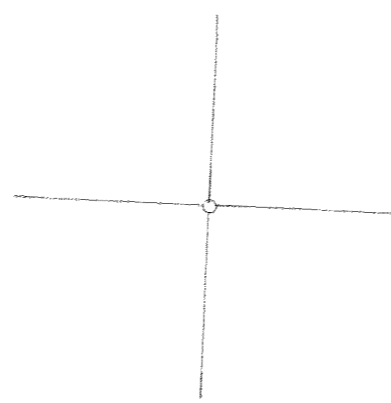
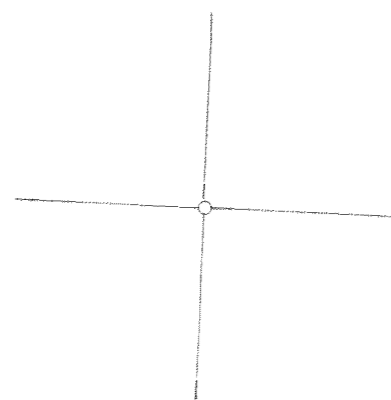
9F 11-8
SH1





9F11-8

SH 2

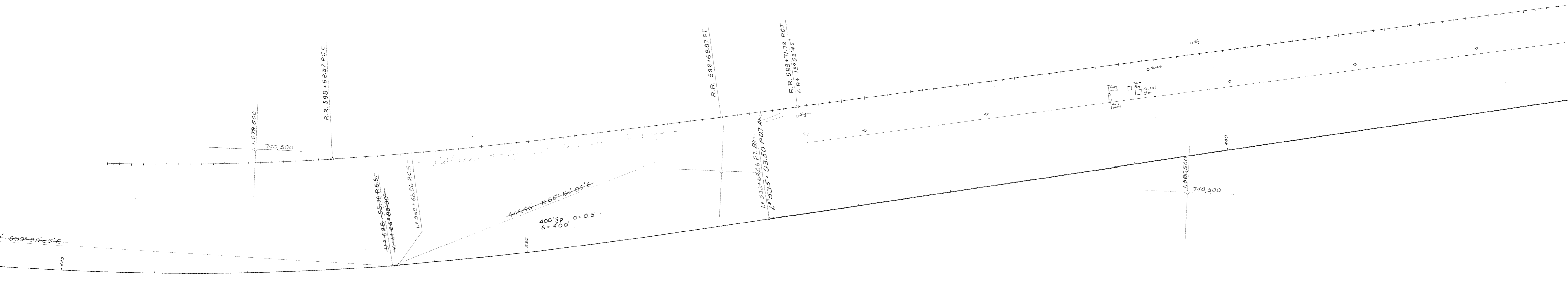


$1,678,600$
 $2,100,000$
 $2,100,000$
 $2,100,000$

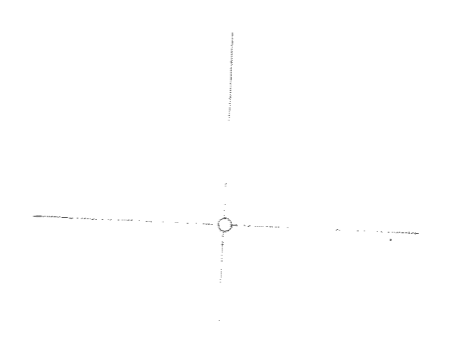
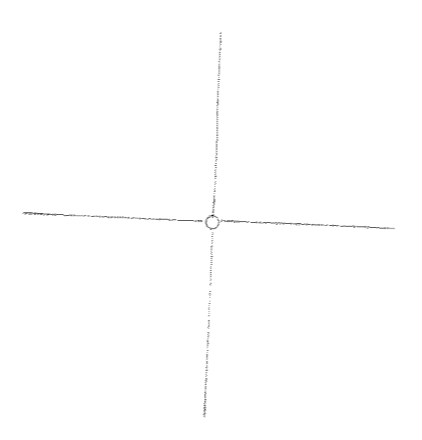
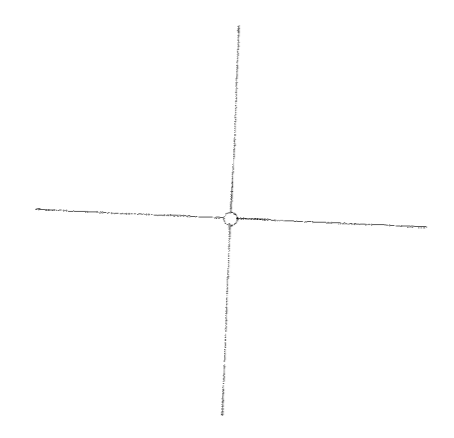
RR
 2°00' C.L.
 T₁ = 23°05'30"
 Δm = 14'41.30"
 E = 73.5.81'
 Lm = 734.53'

420' Spiral
 S₁ = 45'2"
 L₁ = 65 MPH

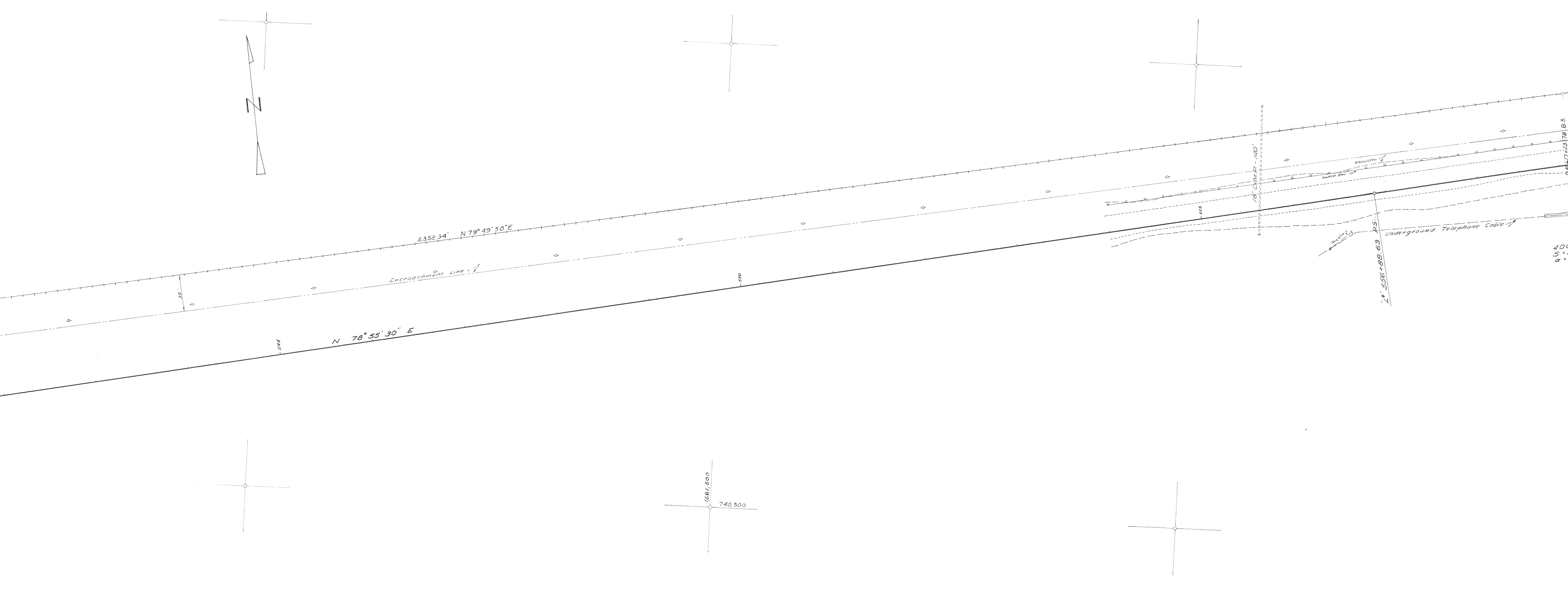
*Note: ...
 some old lines and some old ...
 below old and ...
 in old ...
 1/20/50*



*1° 30' 15" ...
 N 74° 00' 00" ...
 E 1050.2500'*

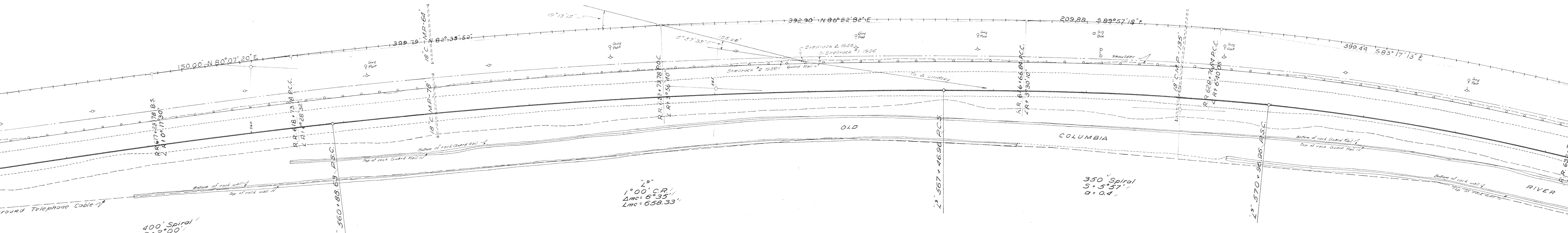


0.50



9F11-8
 Sh 3

400
 S =
 a =



400' Spiral
S = 2° 00'
a = 0.25'

150' Spiral
S = 0° 45'
UP 60 MPH

2° 19' C.R.
1° 00' C.R.
Δmc = 6' 35"
Lmc = 658.33'

RR
1° 00' C.R.
Δmc = 7° 32"
Lmc = 783.06'

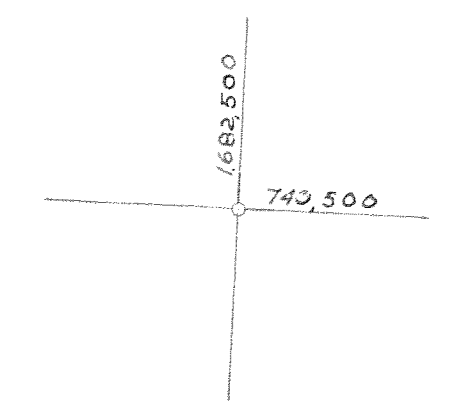
TΔ = 36° 24' 30"
T₁ = 1076.63'
T₂ = 1512.33'

350' Spiral
S = 5° 57'
a = 0.4'

210' Spiral
S = 3° 30'
UP 60 MPH

2° 24' C.R.
Δmc = 17° 04'
Lmc = 711.46'

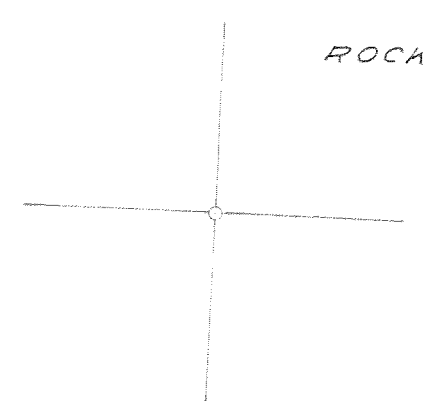
RR
2° 20' C.R.
Δmc = 17° 05'
Lmc = 741.65'



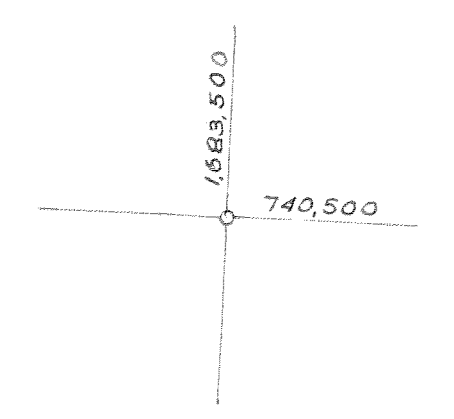
SHELL

ROCK

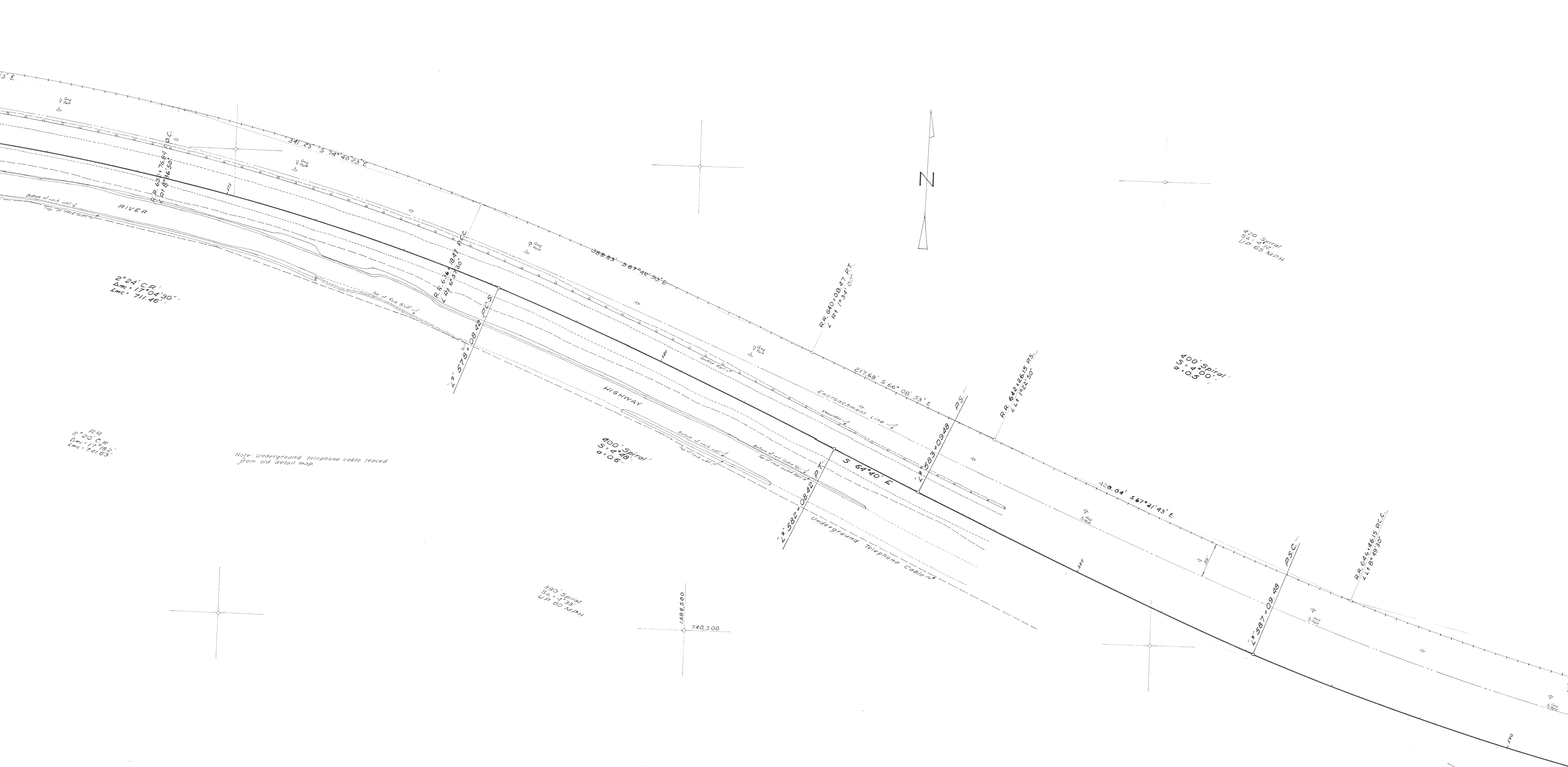
MOUNTAIN



Handwritten notes:
This is a plan view of the
new Columbia River bridge
approach. The bridge is
located on the right side of
the plan. The approach is
located on the left side of
the plan. The approach is
located on the left side of
the plan.

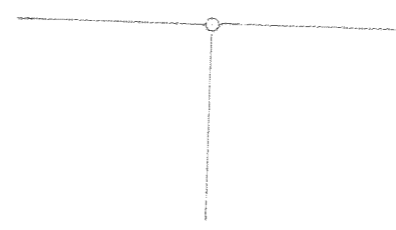
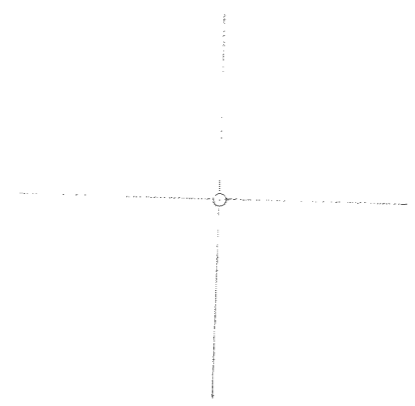


9F 11-8
SH 4



9F 11-8
545

2° 59' 0" C.R.
Δmc: 17° 02' 30"
Lmc: 741.63

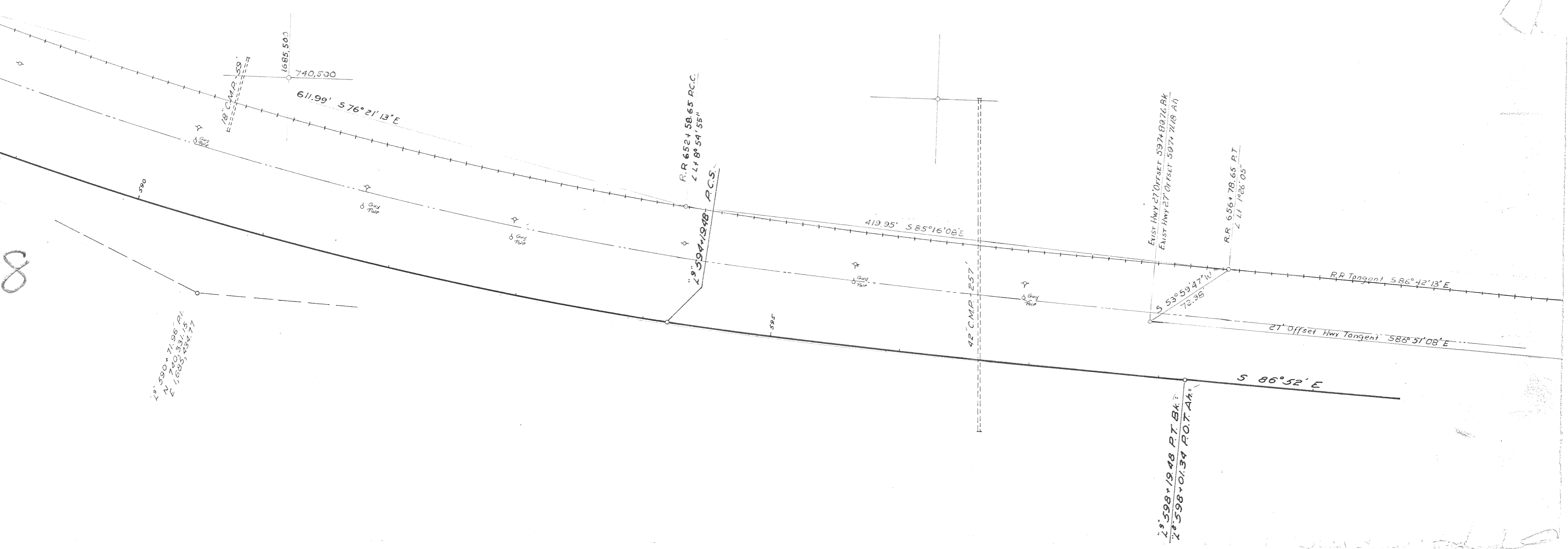


R.R.
2° 00' C.L.
T₁ = 20° 39'
ΔMC = 12° 15'
P = 732.42'
Lmc = 612.50'

R.R.
2° 00' C.L.
T₁ = 22° 12'
P = 762.48'
Lmc = 710.00'

420' Spiral
S₁ = 4° 12'
UP 65 MPH

400' Spiral
S₁ = 4° 00'
a = 0.5



2° 59' 00" + 71.00' P.T.
2° 59' 00" + 59.75' P.T.
2° 59' 00" + 59.75' P.T.

2° 59' 00" + 19.48' P.T. Bk.
2° 59' 00" + 01.34' P.O.T. Ak.

8