

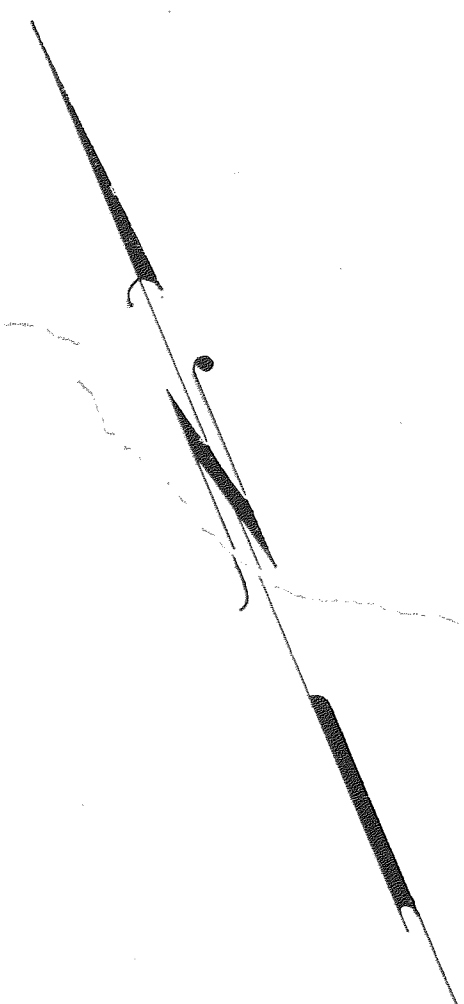
9F 11-5

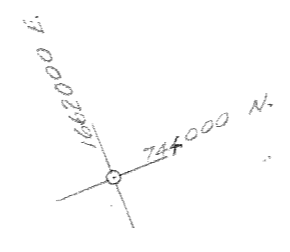
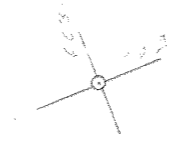
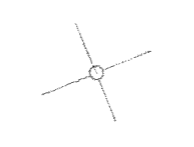
Sh 1

OREGON STATE HIGHWAY DEPARTMENT
COLUMBIA RIVER HIGHWAY - HOOD RIVER COUNTY
FOUNTAIN SLIDE - WYETH SECTION
LC₆ 364+75 To Sta. LC₅ 530+00

Loren A. Weber, Res. Engr. July 1957
Scale: 1" = 100'

Revised August 1958 E.S. Hunter Res. Engr.





9F11-5
SLR



CASCADE LOCKS DET. FOUNTAIN SLIDE UNIT
MAYETH UNIT



1"=100' Map For R.R. Relocation Data)
END E. CASCADE LOCKS LOT - FOUNTAIN SLIDE UNIT
BEGIN FOUNTAIN SLIDE - MYETH UNIT

PROPOSED R.R. RELOCATION

LC 360 + 18.59 F.S.C.
R/W. 400' SP.
S = 4°00'
Q = 0.5

R/W. 400' SP.
S = 4°00'
Q = 0.5

CASCADE LOCKS LUMBER CO. 44-152
Subject to:
Reservation of right to use road (Elden-Gates X-451)
Easements to P.T.T. Co. 14-254, 22-156, 27-20;
Right-of-way

OREGON-WASHINGTON RAILROAD & NAVIGATION CO. 27-527
Subject to:
Flowage Easement to U.S.A. 25-426
Lease to P.T.T. Co. 1938 3-534 (Miscellaneous Records)

SPECIAL DRAINAGE INSTALLATION

SEE BELOW FOR DRAINAGE TUNNEL INFORMATION.

NOTE: SPECIAL AT EQUINEAIN ST. INSTALLED ON E. WORK ORDER

NOTE: TUNNEL BACKFILL PIPE IN AFTER CONTR.

NOTE: SALVAGE & RELOCATE 24" - 1/2 ROUND C.M.P. R.W. 385+69 TO R.W. 387+59

LC 200 SP.
S = 2°00'
Q = 1.0

LC 200 SP.
S = 2°00'
Q = 1.0

LC 200 SP.
S = 2°00'
Q = 1.0

R/W. 400' SP.
S = 4°00'
Q = 0.5

LC 200 SP.
S = 2°00'
Q = 1.0

LC 200 SP.
S = 2°00'
Q = 1.0

LC 200 SP.
S = 2°00'
Q = 1.0

LC 200 SP.
S = 2°00'
Q = 1.0

R/W. 400' SP.
S = 4°00'
Q = 0.5

R/W. 400' SP.
S = 4°00'
Q = 0.5

R/W. 400' SP.
S = 4°00'
Q = 0.5

R/W. 400' SP.
S = 4°00'
Q = 0.5

R/W. 400' SP.
S = 4°00'
Q = 0.5

R/W. 400' SP.
S = 4°00'
Q = 0.5

LC 200 SP.
S = 2°00'
Q = 1.0

R/W. 400' SP.
S = 4°00'
Q = 0.5

LC 200 SP.
S = 2°00'
Q = 1.0

LC 200 SP.
S = 2°00'
Q = 1.0

LC 200 SP.
S = 2°00'
Q = 1.0

LC 200 SP.
S = 2°00'
Q = 1.0

LC 200 SP.
S = 2°00'
Q = 1.0

LC 200 SP.
S = 2°00'
Q = 1.0

R/W. 400' SP.
S = 4°00'
Q = 0.5

R/W. 400' SP.
S = 4°00'
Q = 0.5

R/W. 400' SP.
S = 4°00'
Q = 0.5

R/W. 400' SP.
S = 4°00'
Q = 0.5

R/W. 400' SP.
S = 4°00'
Q = 0.5

R/W. 400' SP.
S = 4°00'
Q = 0.5

R/W. 400' SP.
S = 4°00'
Q = 0.5

R/W. 400' SP.
S = 4°00'
Q = 0.5

R/W. 400' SP.
S = 4°00'
Q = 0.5

R/W. 400' SP.
S = 4°00'
Q = 0.5

R/W. 400' SP.
S = 4°00'
Q = 0.5

R/W. 400' SP.
S = 4°00'
Q = 0.5

R/W. 400' SP.
S = 4°00'
Q = 0.5

R/W. 400' SP.
S = 4°00'
Q = 0.5

R/W. 400' SP.
S = 4°00'
Q = 0.5

R/W. 400' SP.
S = 4°00'
Q = 0.5

R/W. 400' SP.
S = 4°00'
Q = 0.5

R/W. 400' SP.
S = 4°00'
Q = 0.5

R/W. 400' SP.
S = 4°00'
Q = 0.5

R/W. 400' SP.
S = 4°00'
Q = 0.5

R/W. 400' SP.
S = 4°00'
Q = 0.5

PACIFIC R.R. (O.W.R.&N.) Main Line
S 82° 38' 00" E

AGE TUNNEL
↑

INSTALLATION

9F11-5
S43

LC5 Center Line

NOTE: SPECIAL DRAINAGE AT FOUNTAIN SLIDE TO BE INSTALLED ON EXTRA WORK ORDER

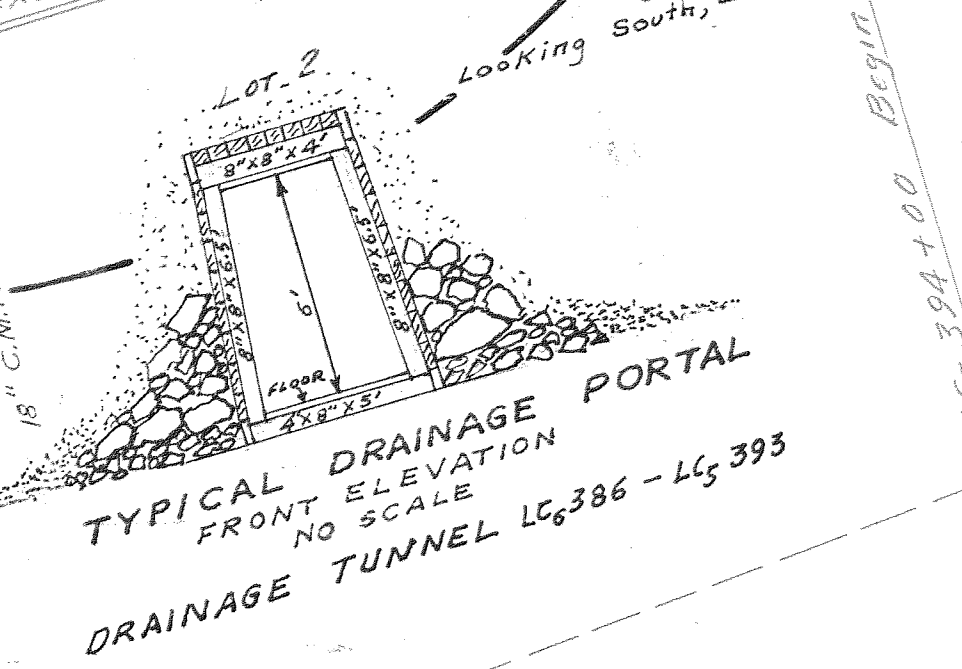
EXISTING R.R. S 83° 20' 00" E
Extend 18" C.M.P. 35' RT. To Connect to 24" Round Flume - Install Special Connection. Remove 12" C.M.P. Dr. Exc. 3 Cu.Yd.

DRAINAGE TUNNEL PORTAL 12" C.M.P. Vertical Drop To Tunnel T. Coupling

NOTE: TUNNEL TO BE COMPLETELY BACKFILLED AND 18" C.M.P. OUT FALL PIPE INSTALLED BY STATE FORCES AFTER COMPLETION OF WORK BY CONTRACTORS.

RELOCATION LC5 387+45.06 FT. AN. LC5 387+45.06 FT. AN.

RELOCATE & RELOCATE 1/2 ROUND C.M.P. 385+69 TO RW 387+59



NOTE: SPECIAL DRAINAGE AT FOUNTAIN SLIDE TO BE INSTALLED ON EXTRA WORK ORDER

EXISTING R.R. S 83° 20' 00" E
Extend 18" C.M.P. 35' RT. To Connect to 24" Round Flume - Install Special Connection. Remove 12" C.M.P. Dr. Exc. 3 Cu.Yd.

DRAINAGE TUNNEL PORTAL 12" C.M.P. Vertical Drop To Tunnel T. Coupling

NOTE: TUNNEL TO BE COMPLETELY BACKFILLED AND 18" C.M.P. OUT FALL PIPE INSTALLED BY STATE FORCES AFTER COMPLETION OF WORK BY CONTRACTORS.

RELOCATION LC5 387+45.06 FT. AN. LC5 387+45.06 FT. AN.

RELOCATE & RELOCATE 1/2 ROUND C.M.P. 385+69 TO RW 387+59

REQUIRED SEE PROFILE FOR

LC5 397+39.12 RS.
LC5 395+400 (Left)
Install 140' Metal Guard Rail

LC5 392+50
Install 108'-18" C.M.P. 22.5 Metal Guard Rail
Install 108'-18" C.M.P. 22.5 Metal Guard Rail
Install 108'-18" C.M.P. 22.5 Metal Guard Rail

LC5 403+200 to LC5 403+50
Install Metal Guard Rail 50 Lin. Ft.

LC5 407+915
24" EXT. SFC. C.M.P. 200' in place
Extend Rt. 30'-24" C.M.P.
Dr. Exc. 10 Cu.Yd.

LC5 409+100 - LC5 411+00
Install Metal Guard Rail 150 Lin. Ft.

LC5 412+58
120'-18" Conc. Pipe (In Place)

LC5 413+22.04 RS.
LC5 413+22.04 RS.
LC5 413+22.04 RS.

LC5 417+24
108'-18" Conc. Pipe (In Place)
Extend 24" Conc. Pipe Rt.
Dr. Exc. 10 Cu.Yd.

LC5 419+50
Metal Guard Rail
LC5 419+50 Metal Guard Rail

LC5 421+50
Metal Guard Rail
LC5 421+50 Metal Guard Rail

LC5 422+50
Install Metal Guard Rail 150 Lin. Ft.

LC5 420
Install Metal Guard Rail 75 Lin. Ft.

LC5 405
2" C.R.
TA = 23° 39' 30"
S = 800.47

LC5 400
2" C.R.
TA = 24° 11'
S = 914.19

LC5 400+22.04 R.C.S.
LC5 411+23.16 R.C.S.

LC5 413+22.04 RS.
LC5 413+22.04 RS.

LC5 417+24
108'-18" Conc. Pipe (In Place)
Extend 24" Conc. Pipe Rt.
Dr. Exc. 10 Cu.Yd.

LC5 419+50
Metal Guard Rail
LC5 419+50 Metal Guard Rail

LC5 421+50
Metal Guard Rail
LC5 421+50 Metal Guard Rail

LC5 422+50
Install Metal Guard Rail 150 Lin. Ft.

LC5 420
Install Metal Guard Rail 75 Lin. Ft.

LC5 420
Install Metal Guard Rail 75 Lin. Ft.

LC5 420
Install Metal Guard Rail 75 Lin. Ft.

LC5 420
Install Metal Guard Rail 75 Lin. Ft.

FELIX & JULIA W. MEINIKHEIM 61-242
Subject to:
O.W.R.R. & N. Co. Right-of-way for water pipe line Lee-Gorton 1919 19-587
Right-of-way to West Coast Power Co 1931 22-621
Right-of-way to P.T.T. Co 1938 27-201
Right-of-way to D.W.R.R. & N. 1938 27-59
Slope easement to U.S.A. 25-575, 28-304, 27-639
Flowage easement to U.S.A. 25-575, 28-304, 27-639
Rights of State of Oregon in and to portion affected by above Flowage Easement

LC5 417+24
108'-18" Conc. Pipe (In Place)
Extend 24" Conc. Pipe Rt.
Dr. Exc. 10 Cu.Yd.

LC5 419+50 to LC5 422+50
Install Type 3 Fence 1,060 Lin. Ft. = 642 Rods

LC5 422+50
Install Metal Guard Rail 150 Lin. Ft.

LC5 420
Install Metal Guard Rail 75 Lin. Ft.

LC5 420
Install Metal Guard Rail 75 Lin. Ft.

LC5 420
Install Metal Guard Rail 75 Lin. Ft.

LC5 420
Install Metal Guard Rail 75 Lin. Ft.

LC5 420
Install Metal Guard Rail 75 Lin. Ft.



LC5 420+00 - LC5 420+75
Install Metal Guard Rail,
75 Lin. Ft.

R/W
375' Sp.
S = 2°48'48"
Q = 0.4

R/W
1°30' C.L.
TA = 10°30'
S = 538.60
L = 10°35'30"
S = 541.70

R/W
375' Sp.
S = 2°48'48"
Q = 0.4

R/W
400' Sp.
S = 2°00'
Q = 0.25

R/W
1° C.L.
TA = 5°40'
S = 483.64
L = 5°33'
S = 477.76

R/W
400' Sp.
S = 2°00'
Q = 0.25

Government Meander Line

9F11-5
SH4

LC5 418+00 End Installation
Metal Guard Rail
E.M. 421+03.25 R.S.

R 631+93.62 A
N 742+49.99
E 1669+56.72
L 2°12'52" Lt.

R 66+20.74 A
N 142+20.26
E 1669+30.26
L 2°46'15" Lt.

R 70+23.39 A
N 742+49.99
E 1669+56.72
L 2°33'15" Lt.

R 741+92.90 A
N 741+92.90
E 1670+182.92
L 4°30'22" Lt.

Lot 3
LC5 433+50 98'-18" C.M.P.
24' Under Pavement
At Coyote Dr. Etc.

R/W 433+00 to LC5 436+00 (Left)
Install 500' Metal Guard Rail

"LC5"
250' Sp.
Q = 0.3
S = 0°56'15"

"LC5"
0°45' C.L.
TA = 5°34'30"
S = 496.93

"LC5"
250' Sp.
Q = 0.3
S = 0°56'15"

R 87+43.49 A
N 741+49.99
E 1670+30.26
L 2°13'37" Lt.

LC5 443+60.79 P.T.

LC5 444+97.69 R.S.

LC5 425 + 70.39 R.C.S.

LC5 429 + 45.39 P.T.

LC5 436 + 17.46 R.S.C.

LC5 441 + 10.79 R.C.S.

LC5 445

LC5 Center Line

LC5 430

LC5 435

LC5 440

EXISTING R.R. S 72° 18' 00" E

UNION PACIFIC R.R. O.W.R. & N.

S 75° 22' 30" E

S 77° 12' 00" E

Type 3 Fence

LC5 422+50 To LC5 423+50 Install
Type 3 Fence 150' = 9.1 Rods

LC5 423+50 Type 1 Fence

N 741+92.10
E 5009+53.27

R 57+95.04 A
N 741+92.25
E 1669+50.98
L 4°52'45" Lt.

Install LC5 423+00 98'-18" C.M.P.
24' Under Pavement
Dr. Etc. 50 Coyote

Install LC5 433+50 108'-18" C.M.P.
24' Under Pavement
Dr. Etc. 50 Coyote

R 69+99.53 A
N 741+92.25
E 1670+05.73
L 4°53'45" Lt.

R 67+74.70 A
N 741+69.65
E 1670+74.41
L 4°05'45" Lt.

R.W. 437+00

LC5 437+00
R.W. 437+00

N 741+60.53
E 5670+925.80

LC5 439+50 102'-18" C.M.P.
24' Under Pavement
50' Coy. Yrd. Draining Etc.
Construct Outlet Trench

R.W. E.C.
N 741+92.10
E 5009+53.27
L 4°52'45" Lt.

R.W. 445+70.67 P.T. BK =
R.W. 445+70.67 P.O.T. R.H.
+68.30

R.W. 446+54.66 R.S.
+51.44

LC5 434+50 to LC5 435+75
Install Type 1 Fence 125' = 7.5 Rods.

Hood River County
Book 29 Page 272

3' (Found)

"LCs" Center Line

S 72° 18' 31" E

S 75° 22' 30" E

S 77° 12' 00" E

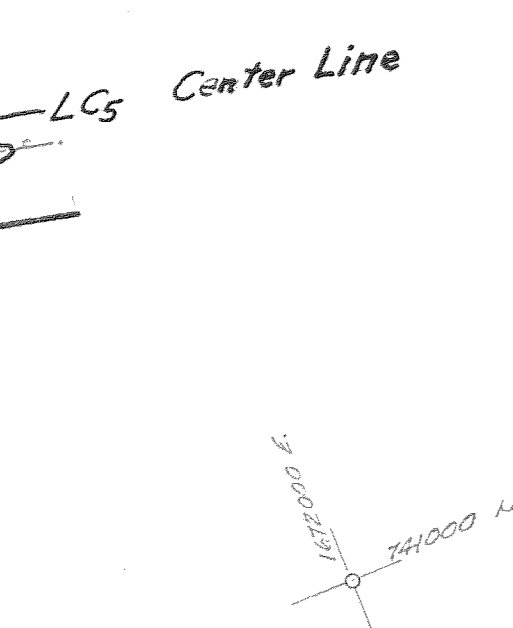
S 84° 36' 30" E

S 86° 40' 45" E

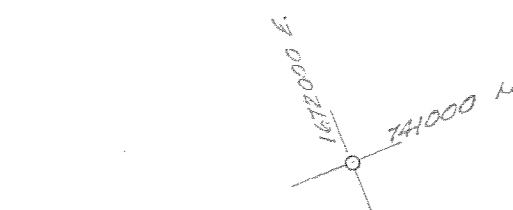


BEGIN WYETH R.R. RELOCATION UNIT

N.W. - N.E.



"LCs" Center Line



"LCs" Center Line

"LCs" Center Line

"LCs" Center Line

"LCs" Center Line

"LCs" Center Line

"LCs" Center Line

"LCs" Center Line

"LCs" Center Line

"LCs" Center Line

"LCs" Center Line

"LCs" Center Line

"LCs" Center Line

"LCs" Center Line

"LCs" Center Line

"LCs" Center Line

"LCs" Center Line

"LCs" Center Line

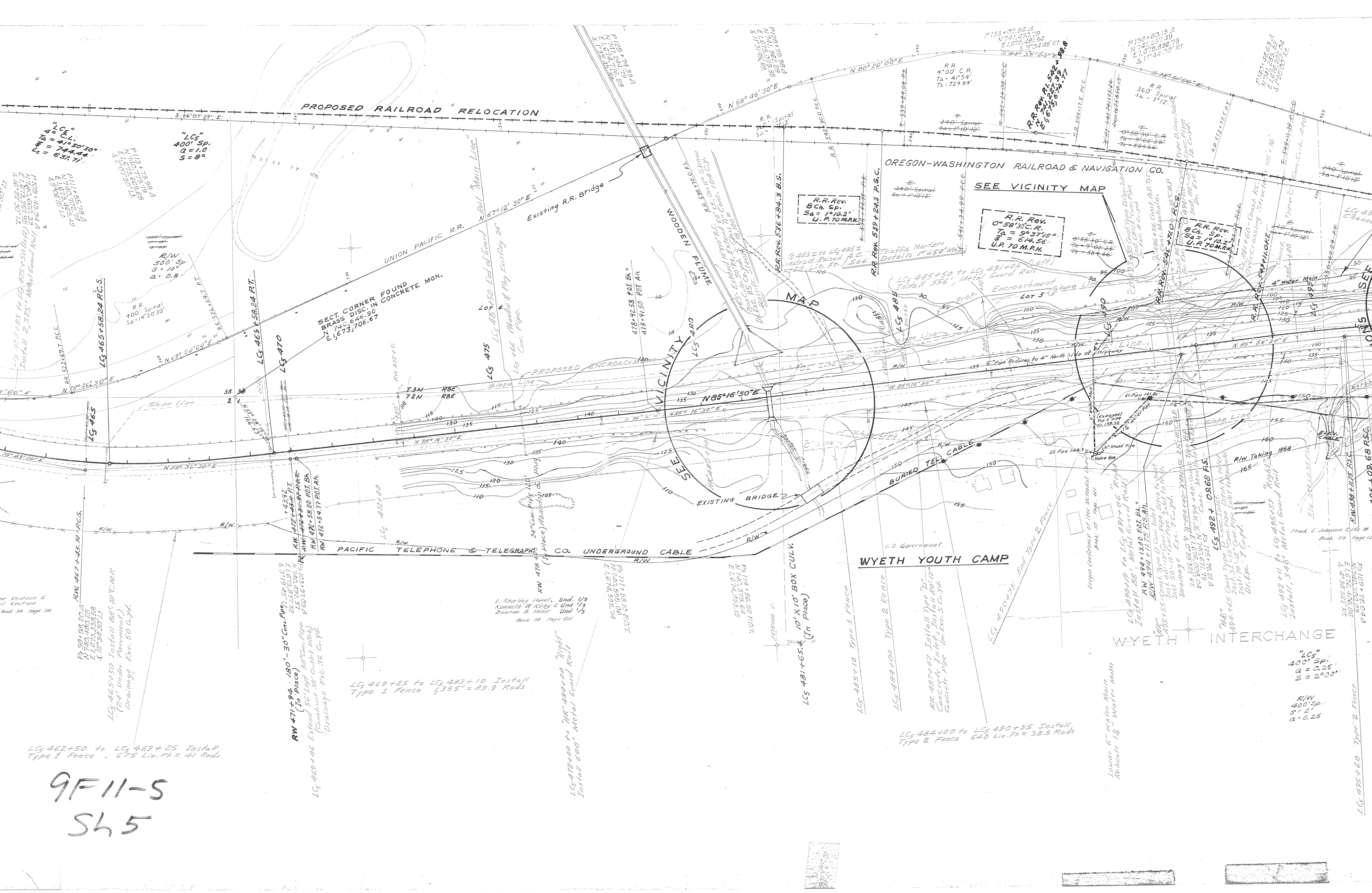
"LCs" Center Line

"LCs" Center Line

"LCs" Center Line

"LCs" Center Line

9F11-SH5



PROPOSED RAILROAD RELOCATION

OREGON-WASHINGTON RAILROAD & NAVIGATION CO.

VICINITY MAP

WYETH YOUTH CAMP

WYETH INTERCHANGE

"LCs"
400' Sp.
Q = 1.0
S = 8°

R/W
500' Sp.
S = 10°
Q = 0.8

R.R. Rev.
S Ch. Sp.
Sa = 10.2'
U.P. 70 M.P.H.

R.R. Rev.
0° 58' 30" C.R.
Ta = 9° 37' 15"
Sa = 614.56'
U.P. 70 M.P.H.

R.R. Rev.
S Ch. Sp.
Sa = 10.2'
U.P. 70 M.P.H.

LC 462+50 to LC 469+25 Install
Type 1 Fence - 675 Lin. Ft. = 41 Rods

RW 471+94.18 to RW 472+58.00
Install 30" Conc. Pipe
(24" Under Pavement)
Drainage. Exc. 50 Cu. Yd.

LC 469+25 to LC 483+10 Install
Type 1 Fence 1385' = 83.9 Rods

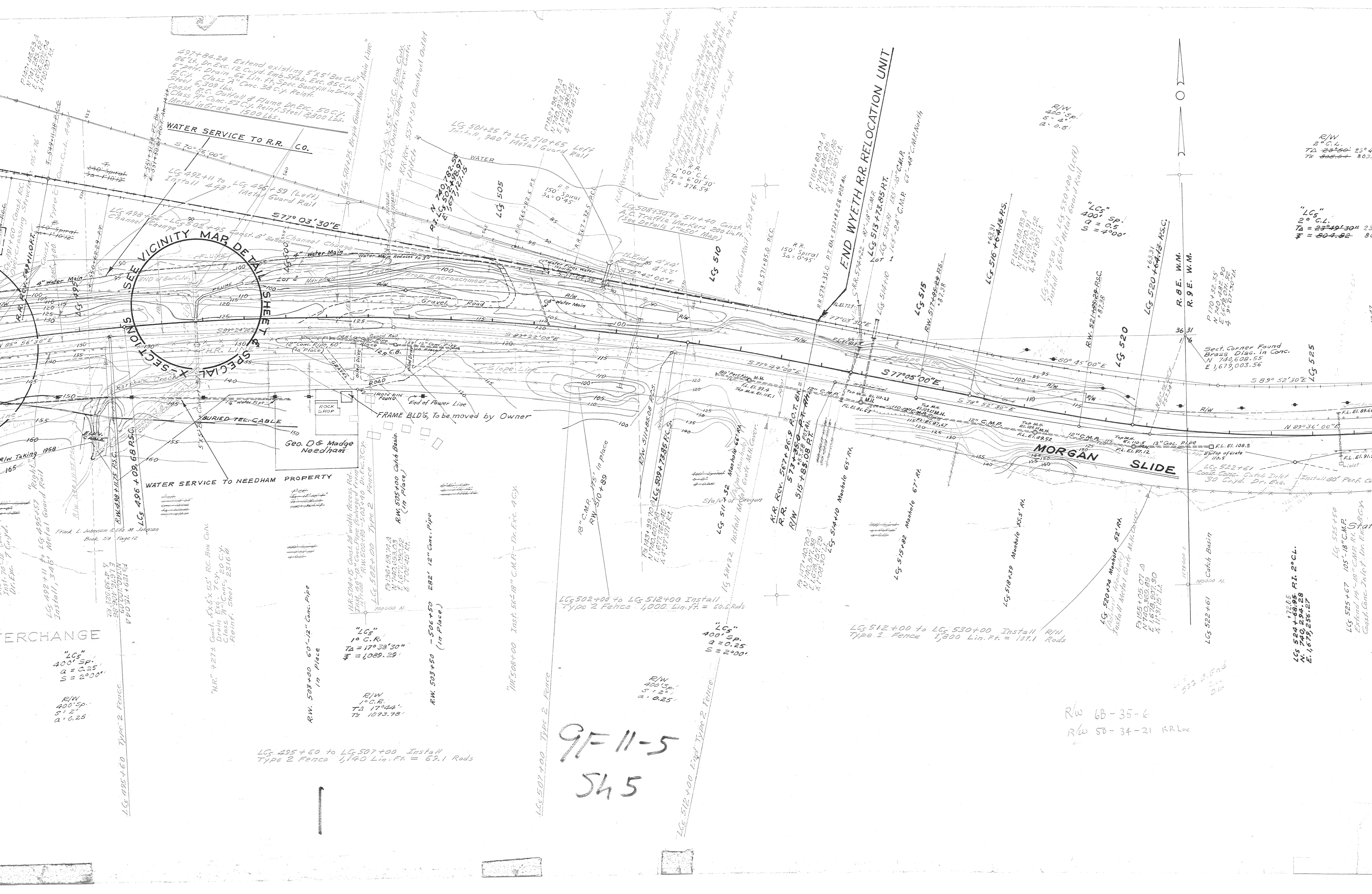
LC 478+00 to "HR" 480+00 "Right"
Install 600' Metal Guard Rail

LC 481+65.4
10' x 10' BOX CULV.
(In Place)

LC 484+00 to LC 490+35 Install
Type 2 Fence 640 Lin. Ft. = 32.8 Rods

"LCs"
400' Sp.
Q = 0.25
S = 2° 00'

9F11-5
SH5



VICINITY MAP DETAIL SHEET

SPECIAL X-SECTIONS

P140+26.63
N 74° 00' 00" E
E 1676.003.56
4 1676.003.56

497+84.24 Extend existing 5'x5' Box Culvert
6" perf. Drain, 12 Cuyd. Emb. 5'x5'. Exc. 85 c.y.
12 C.Y. Class A" Conc. 38 c.y. Reinf.
Steel 6,309 lbs.
Const. R.C. Outfall & Flame Dr. Exc. 50 c.y.
Class #1 Conc. 53 c.y. Reinf. Steel 3,300 Lbs.
Metal In Grate 1500 Lbs.

WATER SERVICE TO R.R. CO.
S 70° 25' 00" E

LC 492+11 to LC 496+59 (Left)
Install 4.43' Metal Guard Rail

LC 498+00 - LC 502+44.5 Const. 8' Station Channel Change

LC 504+15 Const. 20' width Access Rd.
Inst. 8" Conc. Pipe (Colored) 1000 Lin. Ft.
R.W. 502+18 - 503+40 Dr. Exc. 3 c.y.
LC 502+00 TYPE 2 FENCE

LC 503+50 60'-12" Conc. Pipe
in Place

LC 503+50 60'-12" Conc. Pipe
in Place

LC 503+50 60'-12" Conc. Pipe
in Place

LC 503+50 60'-12" Conc. Pipe
in Place

LC 503+50 60'-12" Conc. Pipe
in Place

LC 503+50 60'-12" Conc. Pipe
in Place

LC 503+50 60'-12" Conc. Pipe
in Place

LC 503+50 60'-12" Conc. Pipe
in Place

LC 503+50 60'-12" Conc. Pipe
in Place

LC 503+50 60'-12" Conc. Pipe
in Place

LC 503+50 60'-12" Conc. Pipe
in Place

LC 503+50 60'-12" Conc. Pipe
in Place

LC 503+50 60'-12" Conc. Pipe
in Place

LC 504+25 to LC 510+65 Left
Install 9.40' Metal Guard Rail

LC 505

LC 505

LC 505

LC 505

LC 505

LC 505

LC 505

LC 505

LC 505

LC 505

LC 505

LC 505

LC 505

LC 505

LC 505

LC 505

LC 505

LC 505

LC 508+30 to 511+40 Const.
A.D. Traffic Markers 200 Lin. Ft.
(See Details 1"=50' Map)

LC 510

LC 510

LC 510

LC 510

LC 510

LC 510

LC 510

LC 510

LC 510

LC 510

LC 510

LC 510

LC 510

LC 510

LC 510

LC 510

LC 510

LC 510

LC 513+73.85 PT.
LC 514+00
LC 515

LC 515

LC 515

LC 515

LC 515

LC 515

LC 515

LC 515

LC 515

LC 515

LC 515

LC 515

LC 515

LC 515

LC 515

LC 515

LC 515

LC 515

LC 515

LC 516+64.75 P.S.
LC 517

LC 517

LC 517

LC 517

LC 517

LC 517

LC 517

LC 517

LC 517

LC 517

LC 517

LC 517

LC 517

LC 517

LC 517

LC 517

LC 517

LC 517

LC 517

LC 520
LC 521
LC 522

LC 520

LC 520

LC 520

LC 520

LC 520

LC 520

LC 520

LC 520

LC 520

LC 520

LC 520

LC 520

LC 520

LC 520

LC 520

LC 520

LC 520

LC 520

9F-11-5
545

R/W 6B-35-6
R/W 5B-34-21 KR Loc

LC 495+50 to LC 507+00 Install
Type 2 Fence 1,140 Lin. Ft. = 69.1 Rods

LC 502+00 to LC 512+00 Install
Type 2 Fence 1,000 Lin. Ft. = 60.6 Rods

LC 512+00 to LC 530+00 Install R/W
Type 2 Fence 1,800 Lin. Ft. = 109.1 Rods

LC 524+19.85
N 74° 00' 00" E
E 1676.003.56
4 1676.003.56

LC 525+67 105'-18" C.M.P.
Extend 19'-18" C.M.P. RL 55.5
Const. Conc. Inlet Dr. Exc.

R/W
400 Sp.
S = 2'
a = 0.25

"LC 5"
400 Sp.
a = 0.25
S = 2'
a = 0.25

LC 525

LC 525

LC 525

LC 525

LC 525

LC 525

LC 525

LC 525

LC 525

LC 525

LC 525

LC 525

LC 525

LC 525

LC 525

LC 525

R/W
2° C.L.
TΔ 23°56' 23°47'30"
Tδ 504.64 803.75

R/W
400' Sp.
S = 4°
Q = 0.5

"LC5"
2° C.L.
TΔ = 23°49'30" 23°58'30"
Tδ = 504.62 808.74

"LC5"
400' Sp.
Q = 0.5
S = 4°00'

P 179.150.66
N 79°50'30"E
E 179.955.74
4.2°/4.15' LC5 532+55.58 P.T.
535+03.50 PRT Ah.

Corner Found
Disc. in Conc.
608.55
003.56

LG 525

P 174.147.97
N 79°50'30"E
E 178.486.04
4.8°/02'45" A.

R.W. 525+76.96 R.C.S.

LC5 528+55.38 R.C.S.

LC5 530
End Guard Rail
162.06
R.W. 533+76.96 P.T.

N 82°05'00"E

N 79°50'30"E

N 79°13'00"E

R/W

"LC5" C

To Hood River

N 81°31'30"E

N 89°36'00"E

R.L. El. 89.66

R.L. El. 91.96

109.8

2+51
Catal Inlet
Inst. 180" Perf. Conc. Pipe
Inst. Dr. Exc.

LG 525+50
105'-18" C.M.P.
Extend 19'-18" C.M.P. R.L. S.G.C.Y.
Const. Conc. Inlet Dr. Exc.

State of Oregon

LG 525+50 to LG 530+100 (Right)
Install 450' Metal Guard Rail

172.05
LC5 524+66.96 P.I. 2° C.L.
N 740.294.28
E 1679.256.27

LG 530+00 TYPE 1 FENCE
-END FOUNTAIN SLIDE-WYETH UNIT LG 530+100-

9F 11-5
SHG

