

OREGON STATE HIGHWAY DEPARTMENT  
 Columbia River Highway - Hood River County

Wyeth - Viento Section

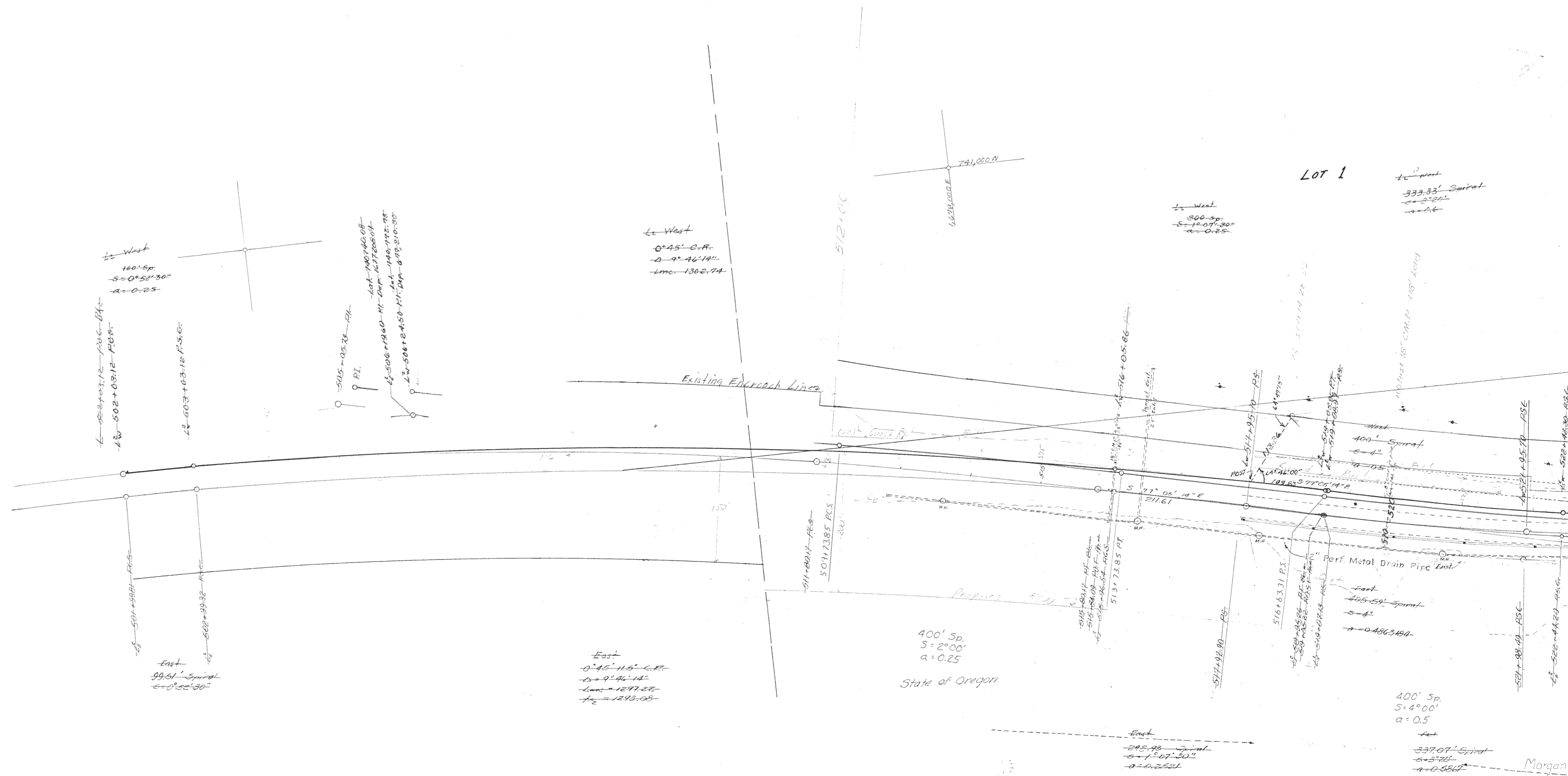
Sta 515 to Sta 797

Loren A. Weber Res. Engr. May 1957

Scale 1" = 100'  
 COORDINATES - Based Upon the Lambert Grid System, North Zone

9F 11-3  
 Sh 1

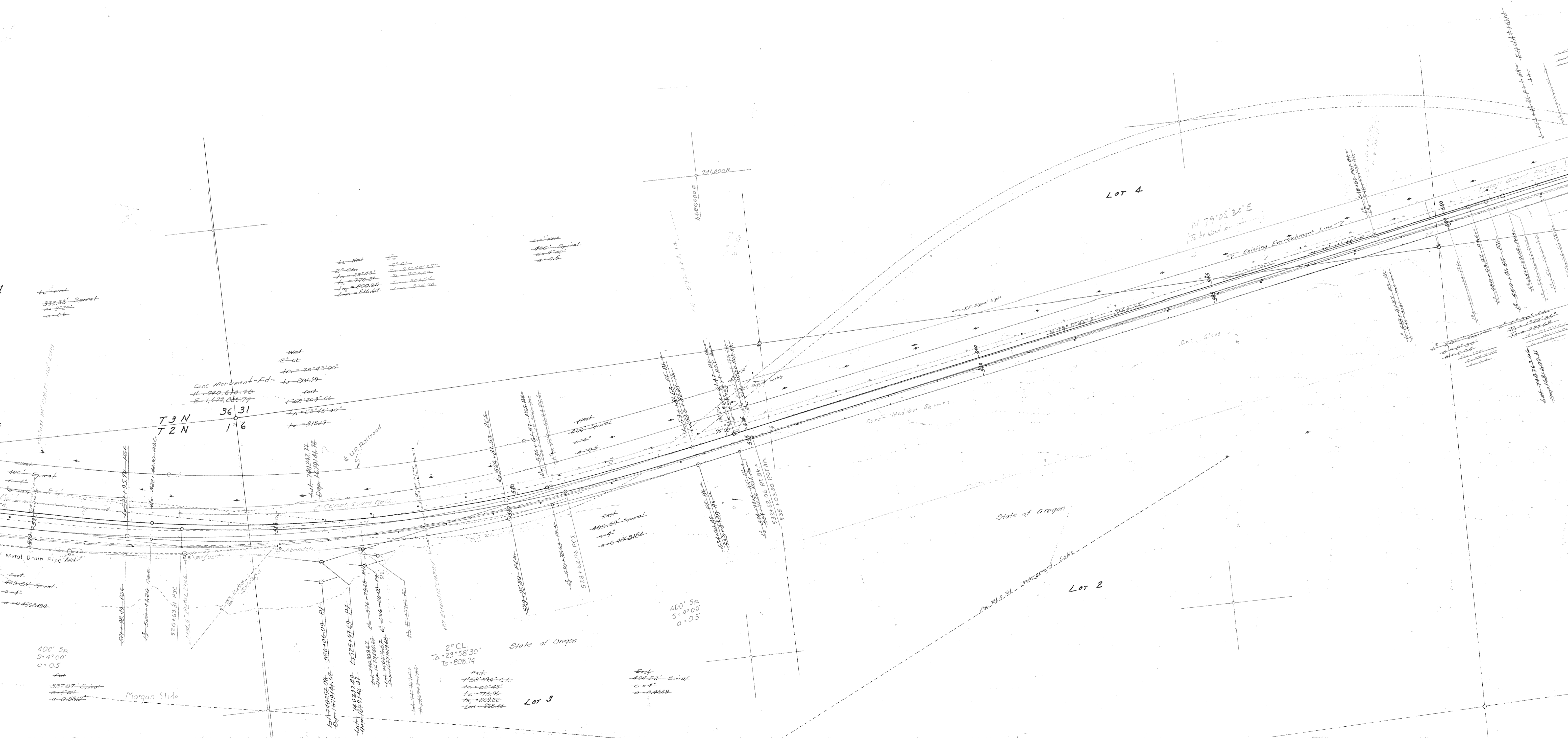
Note: Retaining walls to be placed at Sta 514.55 to Sta 512+20 to retain slopes only if slope easement unobtainable from UP



9F11-3

Sh 2

ed at Sta 51485 to Sta 512+20 & Sta 520+85 to Sta 523+00  
acement unobtainable from U.P.R.R.





65  
52

LOT 3

LOT 2

RR 150' Spiral  
s = 0'45"

RR 1° CR  
Δ = 7'37'48"

RR 240' Spiral  
s = 3'48"

RR  
TΔ = 25°58'  
LΔ = 1462.94  
LΔ = 978.96

RR 2°20' CR  
TΔ = 17'18'16"

RR 300' Spiral  
s = 4'31"

Install Guard Rail 100'  
Existing R/W Line

See 1"=30' detail map for contours & additional detail

Notes Retaining wall begins Sta 555+65 & ends at Sta 582+90 also please note dimensions on vicinity map are from E of west bound lanes

Note - Red o indicates BPA Tower  
As shown on BPA Map

U.S. Government

U.S. Government

Agree Cost of Moving B.P.A. Towers  
If you need a Construction Rd. Cost

740,000N  
1,687,000E

740,000N  
1,687,000E

BPA Tower #1  
B.P.  
12  
6

BPA Tower #3  
B.P.  
12  
6

BPA Tower #5  
B.P.  
12  
6

BPA Tower #6  
B.P.  
12  
6

400' Sp.  
S = 2°00'  
a = 0.25

1° CR  
Δ = 6°35'

350' Sp.  
S = 5°57'  
a = 0.4

2°24' CR  
Δ = 17°04'30"

400' Sp.  
S = 4°45'  
a = 0.6

Const. Metal End Type Retaining Wall

West 200' Spiral  
s = 3'30"  
a = 0.25

East 197.02' Spiral  
s = 3'30"  
a = 0.25

West 2°30' CR  
TΔ = 19°50'37"  
LΔ = 1450.07

East 2°32'15" CR  
TΔ = 19°56'37"  
LΔ = 1445.91

West 2°28'15" CR  
TΔ = 16°15'04"  
LΔ = 681.28

West 300' Spiral  
s = 4'55"  
a = 0.42

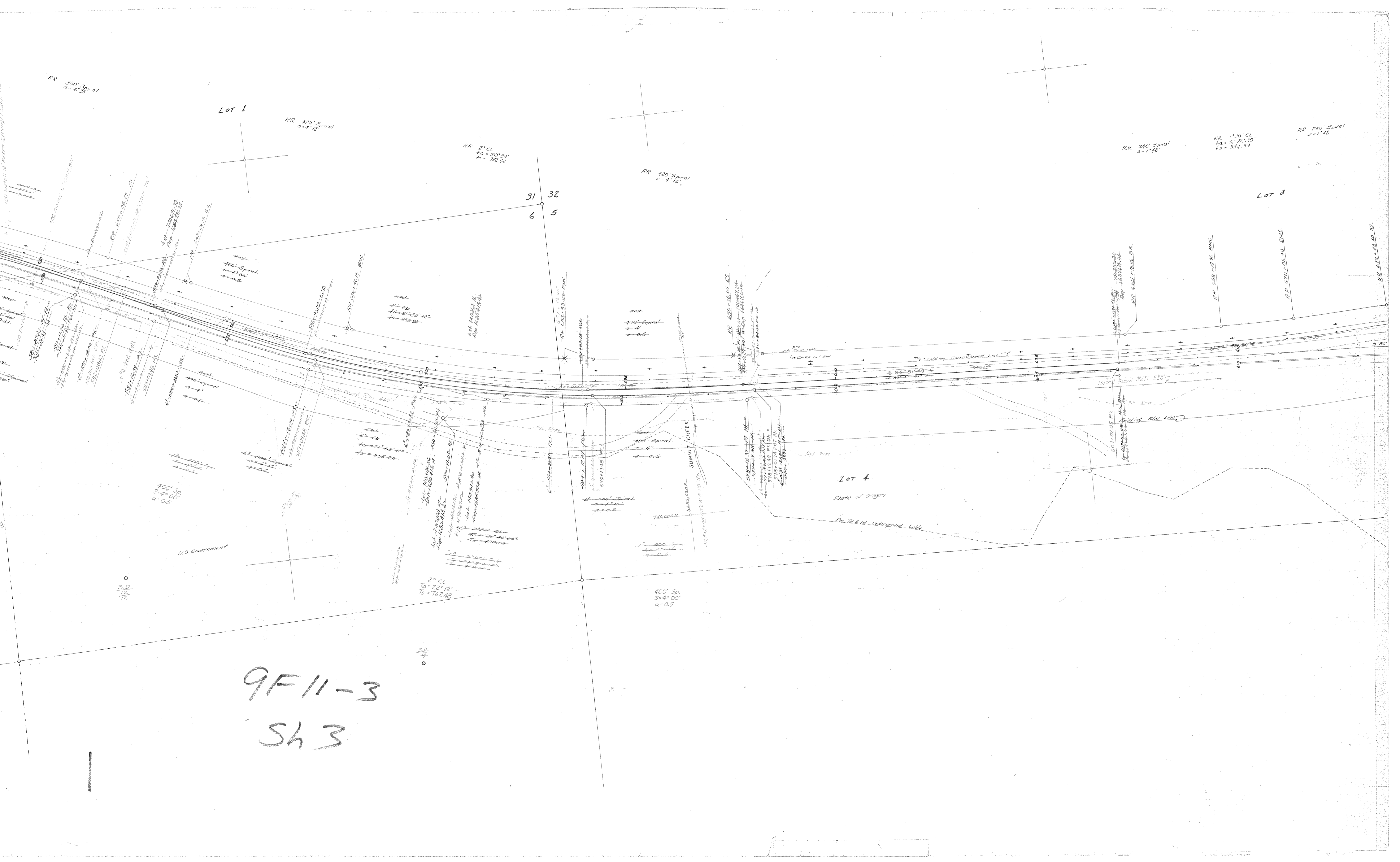
West 200' Spiral  
s = 3'45"  
a = 0.35

West 200' Spiral  
s = 3'45"  
a = 0.35

West 300' Spiral  
s = 4'55"  
a = 0.42

West 200' Spiral  
s = 3'45"  
a = 0.35

West 200' Spiral  
s = 3'45"  
a = 0.35



LOT 1

LOT 3

LOT 4

9F11-3  
SH 3

RR 300' Spiral  
2° 4' 33"

RR 420' Spiral  
5° 4' 12"

RR 2° CL  
TA = 20° 39'  
TS = 282.42

RR 420' Spiral  
5° 4' 12"

RR 240' Spiral  
5° 1' 48"

RR 1° 30' CL  
TA = 6° 24' 30"  
TS = 334.99

RR 240' Spiral  
5° 1' 48"

31 32  
6 5

400' Sp.  
5° 4' 00"  
a = 0.5

400' Sp.  
5° 4' 00"  
a = 0.5

400' Sp.  
5° 4' 00"  
a = 0.5

400' Sp.  
5° 4' 00"  
a = 0.5

2° CL  
TA = 22° 12'  
TS = 762.48

U.S. Government

SUMMIT CREEK

Ford Roll 330

State of Oregon

Exc. Tel. & Tel. Underground Cable

30  
12  
12

30  
12  
12