

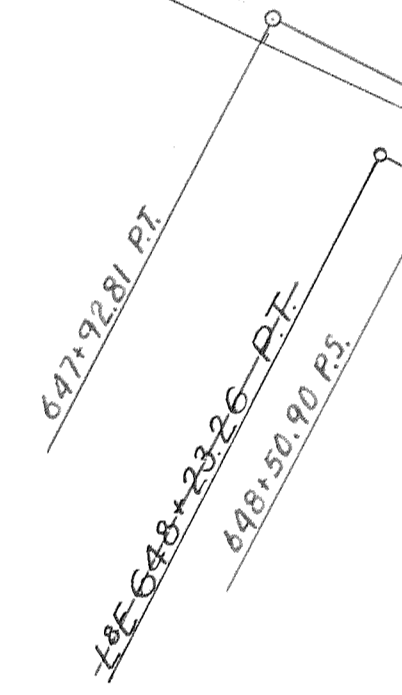
L&W 643+48.84-PC1



L&W 400-SP
S=12.1
a=0.9

L&W 336-CL
Δmc 20° 31' 16"
Lmc 285.99
Lmc 572.02

L&W 3°36'-C.L.
Δmc 20° 30' 15"
Lmc 2016.21
Lmc 1365.79



L&E 490-SP
S=8
a=1.9

L&E
Δmc 22° 53' 55"
Lmc 290.11
Lmc 572.47

L&E
4°-C.L.
Δmc 22° 59' 48"
Lmc 1332.16
Lmc 2088.56

3°48'-C.L.
Δ=21°45'

Wyeth Vient. Sect
Col River Hwy 1"=50'

9F 11-2
SH1

Race Road - right side
cross in center of this distance

EXISTING HWY



L&W 657+86.25-FC-S-PK
L&W 657+86.25-FC-S-PK
L&W 658+22.67-PC-S

L&W
3°36' C.L.
Δmc 20°30'15"
E=2016.21
S=1365.79

L&W 657+86+26 P.C.S. BK
L&W 657+86+26 P.C.S. 117
L&W 658+22+67 P.C.S.
L&W 658+19+12 P.C.S.
L&W 658+23+68 P.C.S.

L&E 658+19+86 P.C.S.
658+23+27 P.C.S.

L&W
356.25 SP
S=7°44'54"
a=0.8

L&W
356.25 SP
S=7°44'54"
a=0.8

L&E
359.94 SP
S=7°52'43"
a=0.895

L&E
350 SP
S=7°52'30"
a=1.0

L&E
360 SP
S=7°55'12"
a=1.0

L&E 661+83+68 P.C.S.

L&W 661+78+92 P.C.S.

661+83+21 P.C.S.

L&W
0°45' C.L.
Δmc 4°13'20"
Lmc 562.96

L&E 665+97+92 P.C.S.

L&W 667+41+88 P.C.S.

L&W
191.47 SP
S=2°10'09"
a=0.4

L&W 669+33+35 P.C.S.

L&W 669+64+59 P.C.S.

L&E
366.67 SP
S=8°29'
a=0.3

L&E
0°24' C.L.
Δmc 1°39'25"
Lmc 414.24

L&E 667+53+53 P.C.S.
L&E 667+53+53 P.C.S.

50 Scale