



626
507
931
864
51
524

RR 200' Spiral
S = 1° 42'

RR 150' CL
TA = 6° 21' 50"
TS = 339.99

RR 240' Spiral
S = 1° 42'

RR 330' Spiral
S = 0° 36'

RR Rev.
2° CR
2-11 Ch. Sp.
S = 3° 18'
60 MPH
TS = 14° 37' 00"
TS = 532.62

RR 4° CR
TA = 51° 24' 45"
TS = 256.40

1° 30' CL
TA = 05° 51'
TS = 345.21
300' Sp.
S = 2° 15'
a = 0.5

505.66 Sp.
S = 10° 00'
a = 0.762

3955226° CR
TA = 48° 57'
TS = 910.42
TS = 844.4

35649' Sp.
S = 7° 03'
a = 11.095

Wyeth Viento
Col. Riven Hwy Scale 1" = 100'

9 F 10 - 10
SHI

Carter Kvarle & Anna Kvarle

Lot 3

Lot 2

Carter Kvarle & Anna Kvarle
2007 18 Page 450
2007 19 Page 506
2007 20 Page 506
2007 21 Page 506
2007 22 Page 506
2007 23 Page 506
2007 24 Page 506
2007 25 Page 506
2007 26 Page 506
2007 27 Page 506
2007 28 Page 506
2007 29 Page 506
2007 30 Page 506
2007 31 Page 506
2007 32 Page 506
2007 33 Page 506
2007 34 Page 506
2007 35 Page 506
2007 36 Page 506
2007 37 Page 506
2007 38 Page 506
2007 39 Page 506
2007 40 Page 506
2007 41 Page 506
2007 42 Page 506
2007 43 Page 506
2007 44 Page 506
2007 45 Page 506
2007 46 Page 506
2007 47 Page 506
2007 48 Page 506
2007 49 Page 506
2007 50 Page 506
2007 51 Page 506
2007 52 Page 506
2007 53 Page 506
2007 54 Page 506
2007 55 Page 506
2007 56 Page 506
2007 57 Page 506
2007 58 Page 506
2007 59 Page 506
2007 60 Page 506
2007 61 Page 506
2007 62 Page 506
2007 63 Page 506
2007 64 Page 506
2007 65 Page 506
2007 66 Page 506
2007 67 Page 506
2007 68 Page 506
2007 69 Page 506
2007 70 Page 506
2007 71 Page 506
2007 72 Page 506
2007 73 Page 506
2007 74 Page 506
2007 75 Page 506
2007 76 Page 506
2007 77 Page 506
2007 78 Page 506
2007 79 Page 506
2007 80 Page 506
2007 81 Page 506
2007 82 Page 506
2007 83 Page 506
2007 84 Page 506
2007 85 Page 506
2007 86 Page 506
2007 87 Page 506
2007 88 Page 506
2007 89 Page 506
2007 90 Page 506
2007 91 Page 506
2007 92 Page 506
2007 93 Page 506
2007 94 Page 506
2007 95 Page 506
2007 96 Page 506
2007 97 Page 506
2007 98 Page 506
2007 99 Page 506
2007 100 Page 506

State of Oregon

U.S. Government

U.S. Government

Inst. Guard Rail 1200'

Adjusted to 2015
Inst. 1200' Sp.
Coast 1 Ch. Sp.
Dist. 1200' Sp.

100' (10' x 10') Underground Cable

32 33
5 4
Coords - From Kirkwood Survey
N. 720648.08
E. 1691120.35

Carter Kvanle & Anna Kvanle
Lots 1 & 2, Sec. 5, Twp. 2N, R9E, W4E

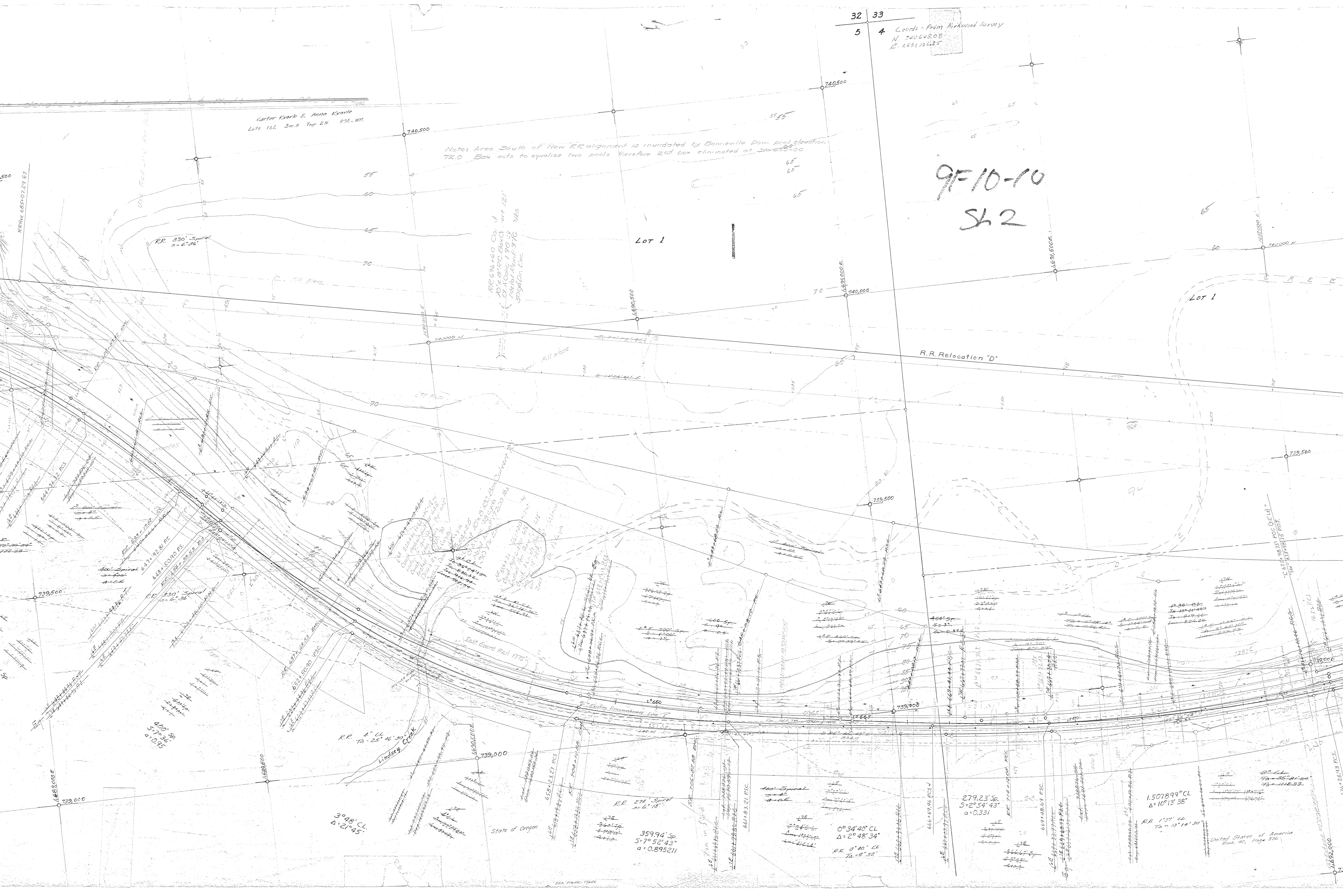
Note: Area South of New RR alignment is inundated by Bonneville Dam pool elevation
72.0 Box acts to equalize two pools therefore 2nd box eliminated at Station 62+00

9F-10-10
S42

Lot 1

Lot 1

R.R. Relocation "D"



State of Oregon

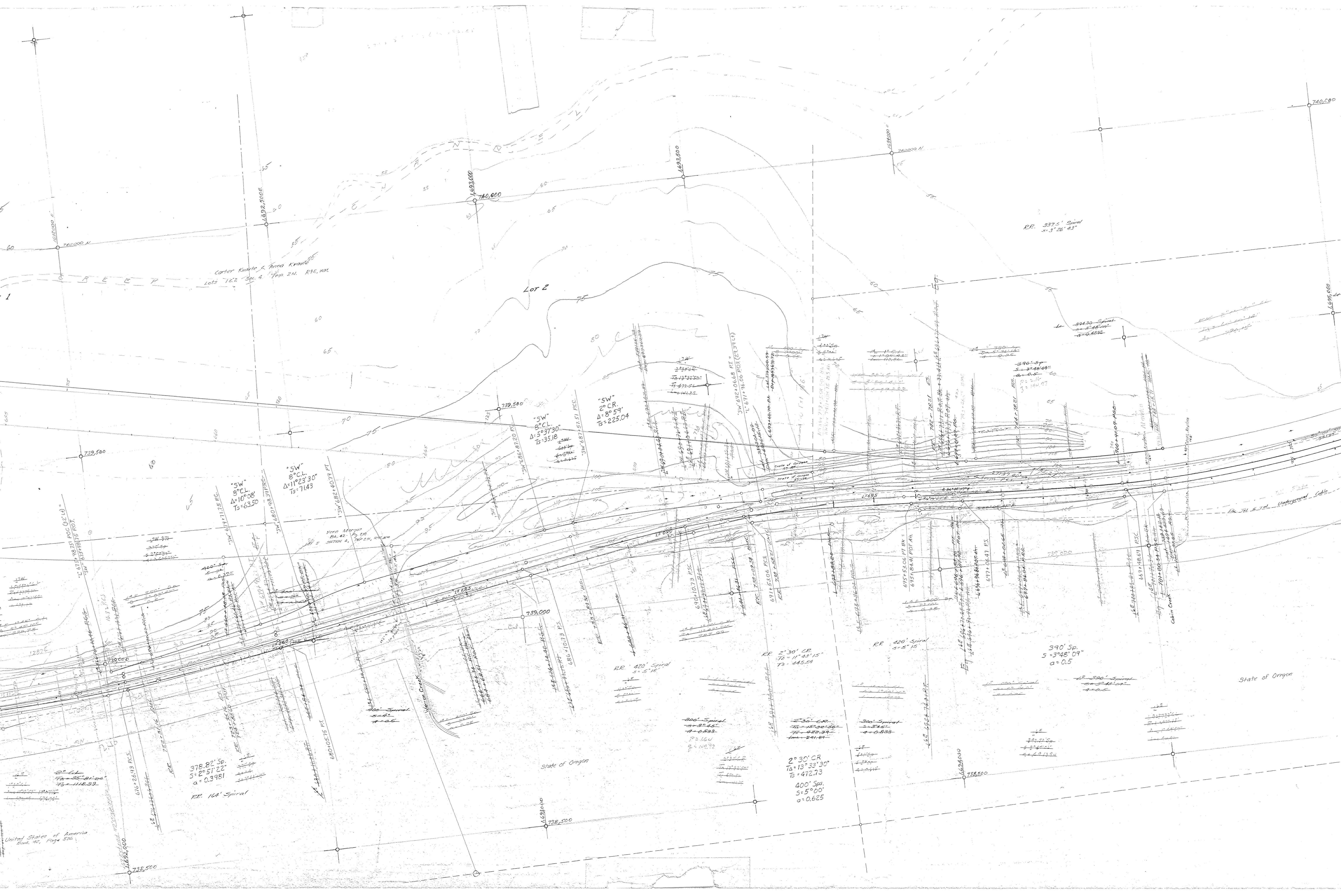
359.94 Sp
5° 7' 52" 43"
a = 0.895211

279.23 Sp
5° 2' 54" 43"
a = 0.331

1.507899° CL
Δ = 10° 13' 38"

RR 1° 30' CL
72+13' 14' 30"

United States of America
Book 46, Page 200



Carter Kvalle & Anna Kvalle
Lots 1 & 2, Sec. 4, Twp 2N, R9E, W4E

Lot 2

RR 337.5' Spiral
 $\Delta = 3^\circ 26' 43''$

390' Sp.
 $\Delta = 3^\circ 48' 09''$
 $a = 0.5$

SW
2^o CR
 $\Delta = 8^\circ 59'$
 $Ts = 225.04$

SW
8^o CL
 $\Delta = 5^\circ 37' 30''$
 $Ts = 35.18$

SW
8^o CL
 $\Delta = 11^\circ 23' 30''$
 $Ts = 71.43$

SW
8^o CL
 $\Delta = 10^\circ 08'$
 $Ts = 63.30$

RR 420' Spiral
 $\Delta = 5^\circ 15'$

RR 2' 30' CR
 $\Delta = 11^\circ 43' 15''$
 $Ts = 145.59$

RR 420' Spiral
 $\Delta = 5^\circ 15'$

390' Sp.
 $\Delta = 3^\circ 48' 09''$
 $a = 0.5$

RR 164' Spiral
 $\Delta = 2^\circ 57' 22''$
 $a = 0.3981$

2^o 30' CR
 $\Delta = 13^\circ 33' 30''$
 $Ts = 472.73$
400' Sp.
 $\Delta = 5^\circ 00'$
 $a = 0.625$

State of Oregon

State of Oregon



$RB = 0^\circ 02' 30''$ CL
 $TA = 50^\circ 51' 15''$
 $TS = 50^\circ 51' 55''$
 $TR = 1504.22$

10.54-CF
On 3/29/50
On 12/29/50
R = 2732.25

1928722C
156.444 CL
156.444 CL
156.444 CL
156.444 CL
156.444 CL
R = 2970.65

$P = 57$ CL
 $TA = 53^\circ 13'$
 $TR = 1672.77$

Note: No extra E/W in this area

9F10-10
S43