

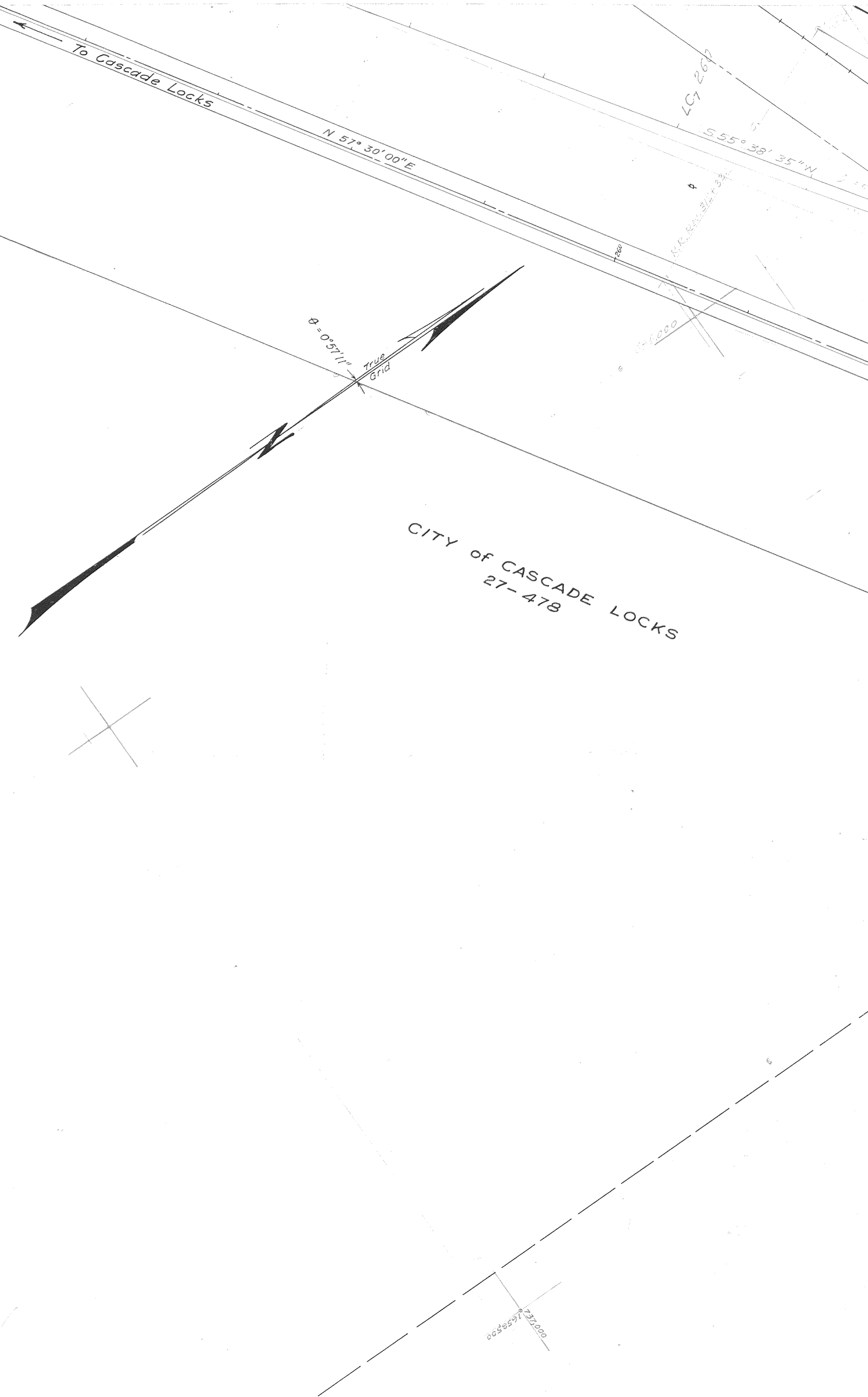
OREGON STATE HIGHWAY DEPARTMENT
LOCATION MAP
HERMAN CREEK ROAD INTERCHANGE
EAST CASCADE LOCKS JUNCTION ~ FOUNTAIN SLIDE SECTION
COLUMBIA RIVER HIGHWAY

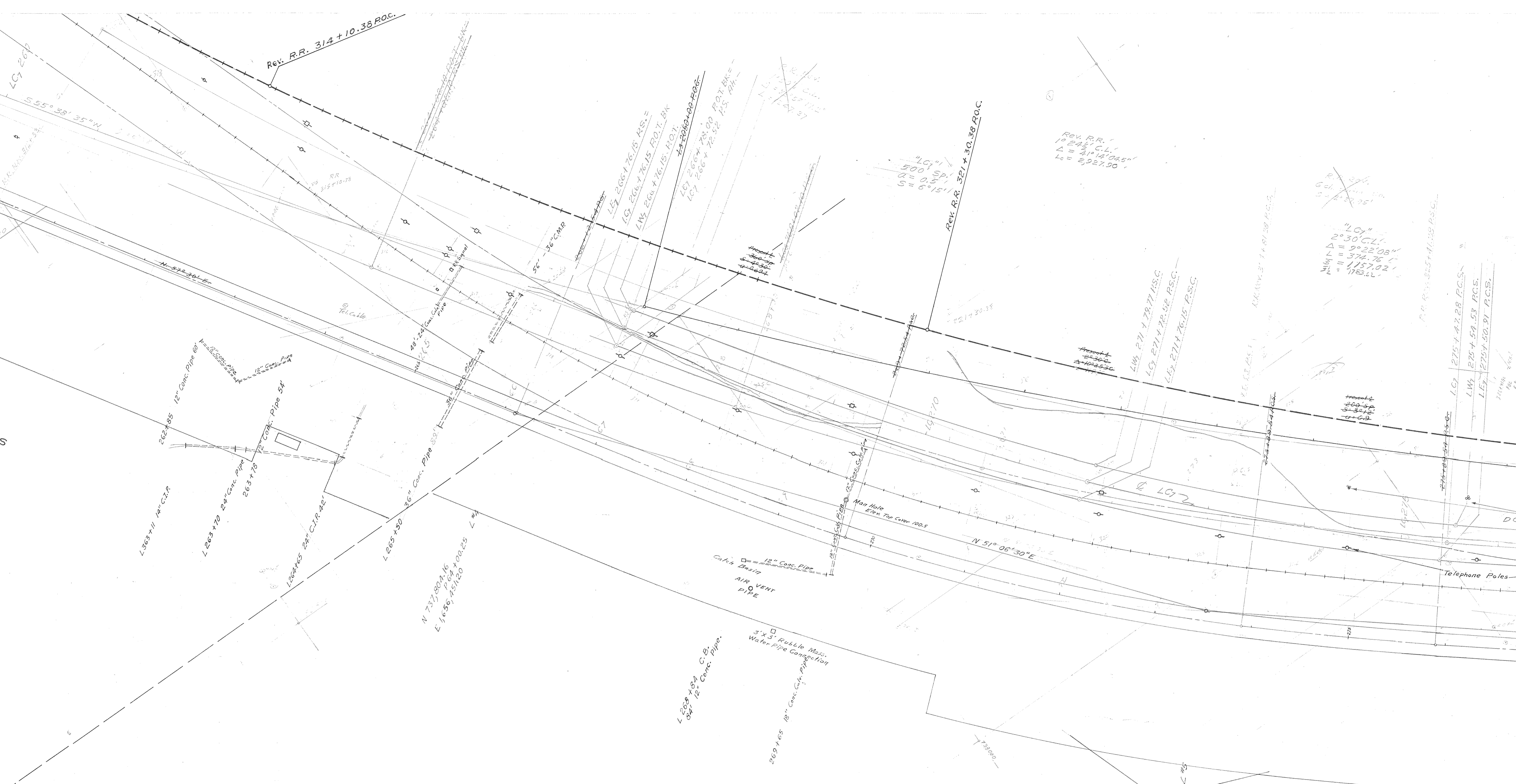
HOOD RIVER COUNTY
Loren A Weber, Resident Engineer
Map Revised July, 1958 - E.S. Hunter, Res. Engr.
Scale: 1" = 50'

Oregon Coordinate System, North Zone

9F10-9

sh1





Rev. R.R. 314 + 10.38 P.O.C.

Rev. R.R. 321 + 30.38 P.O.C.

Rev. R.R. 10
 10 24' 14" C.L.
 $\Delta = 41' 14' 04.5"$
 $L = 2,927.90'$

"LC"
 $2^{\circ} 30' C.L.$
 $\Delta = 9^{\circ} 22' 08"$
 $L = 374.75'$
 $M = 1157.02'$
 $N = 178.62'$

LC 275+4 47.28 P.C.S.
 LW 275+59.53 P.C.S.
 LF 275+50.91 P.C.S.

U.S. GOVERNMENT

N 739 116.22
 Rev. E 1657 154.52
 N 739 267.28
 P 714 38.08
 E 1657 025.32

9F 10-9
 SH 2

10-9
42

N 738 469.98
LC 2714
E 1657 339.59

N 738 720.77
LC 2714
E 1657 339.59

N 738 770.77
LC 2714
E 1657 339.59

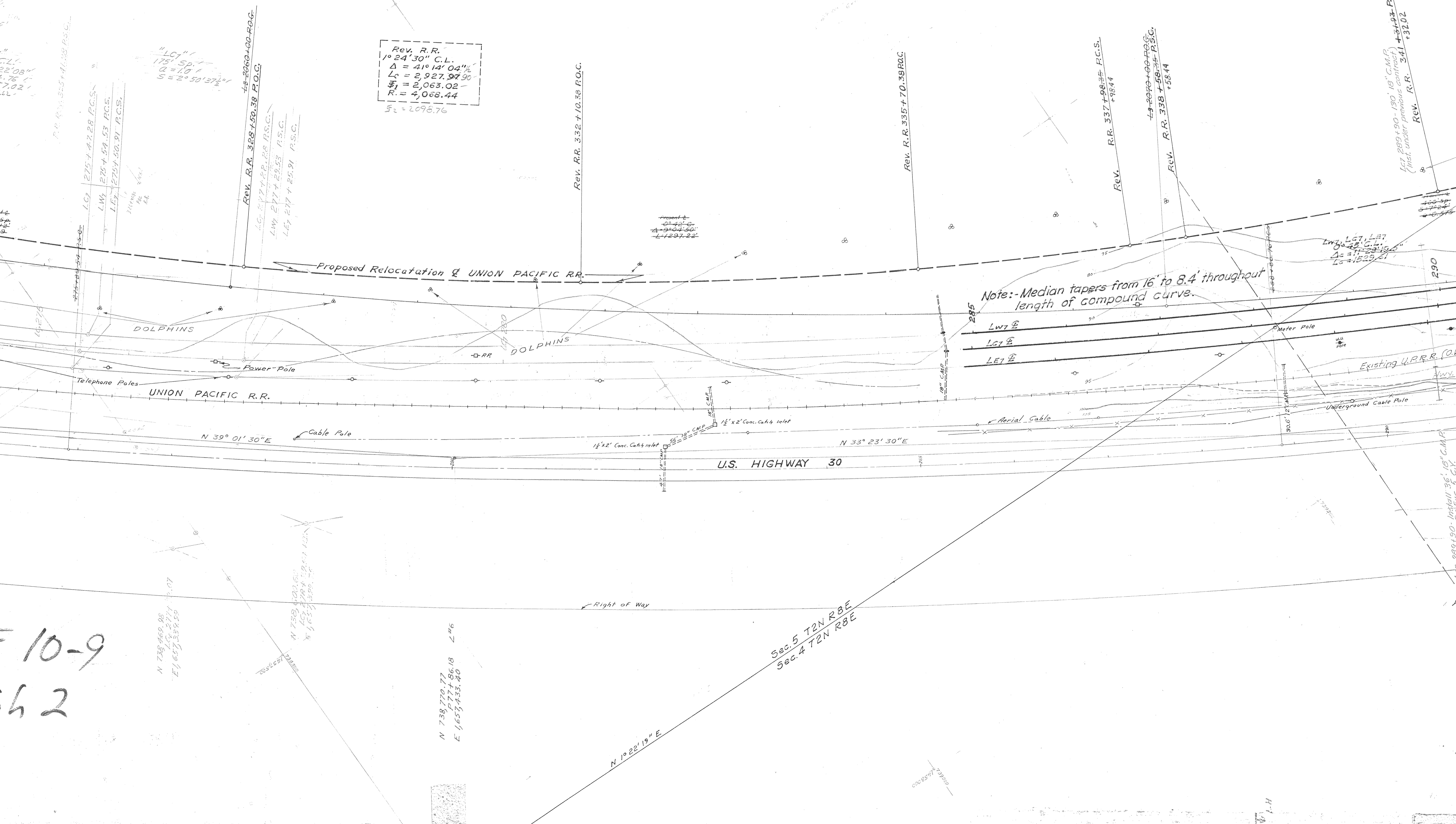
N 1° 22' 19" E
Sec. 5 T2N R8E
Sec. 4 T2N R8E

Rev. R.R.
1° 24' 30" C.L.
 $\Delta = 41° 14' 04''$
 $L_c = 2,927.9790$
 $S_1 = 2,063.02$
 $R = 4,068.44$
 $S_2 = 2,096.76$

Rev. R.R.
2 Chord SP.
 $S = 0° 44' 51''$

Rev. R.R.
1° 11' 30" C.L.
 $\Delta = 3° 15' 37''$
 $L_c = 273.58$
 $S_1 = 2,098.74$
 $R = 4,808.12$
 $S_2 = 2,098.74$
 $L_c = 273.58$

LC 289 + 90 - 130 18" C.M.P.
(Inst. under previous contract)
Rev. R.R. 341 + 31.02



Note: - Median tapers from 16' to 8.4' throughout length of compound curves.

LW7 E
LC7 E
LE7 E

Existing U.P.R.R. CO.
V.V.V.

Underground Cable Pole

Aerial Cable

U.S. HIGHWAY 30

UNION PACIFIC R.R.

Proposed Relocation of UNION PACIFIC R.R.

DOLPHINS

DOLPHINS

N 39° 01' 30" E

N 33° 23' 30" E

Right of Way

239200

1-H

Rev. R.R.
10 Chord Sp.
S = 1047.43
S = 1°47'15"

Lc7 289+90 - 130' 18" C.M.P.
(Inst. under previous contract)
Rev. R.R. 341 + 32.02

Lc7 292+55.52 P.C.S.
Lc7 292+51.29 P.C.S.
Lc7 292+59.14 P.C.S.

3202 P.I. BK =
R.V. R.R. 344 + 1546 P.O.T. Alt.
R.V. R.R. 344 + 1498

Rev. R.R. 346 + 61.10 F.S.

Lc7 295+55.50 P.T.
Lc7 295+51.69 P.T. BK =
Lc7 295+49.77 P.O.T. Alt.
Lc7 295+42.73

Lc7 295+59.14 P.T. 16.211
Lc7 295+55.34 P.O.T. 16.2 Rt.
Lc7 295+79.26 P.O.T. 16.2 Rt.

Lc7 297+13.01 P.S.
R.R. Rev. 349 + 11 - 112' F.S. C.M.P.
(Inst. under previous contract)

Rev. R.R. Spiral
21 Chord
S = 7030.45'

Rev. R.R.
352+91.0 P.S.C.

N 74° 0' 0" E
101.2782
1658'

Rev. R.R.
2° 23' C.M.P.
TA = 20° 28' 20"
S = 750.29

RR Rev. 355 + 20.09 P.S.

Note: Grading previous

Lc5 302+49.56 P.I.
Lc5 302+49.56 P.I.
E.I. 140.84
E.I. 138.43
E.I. 135.94
S = 47.30'

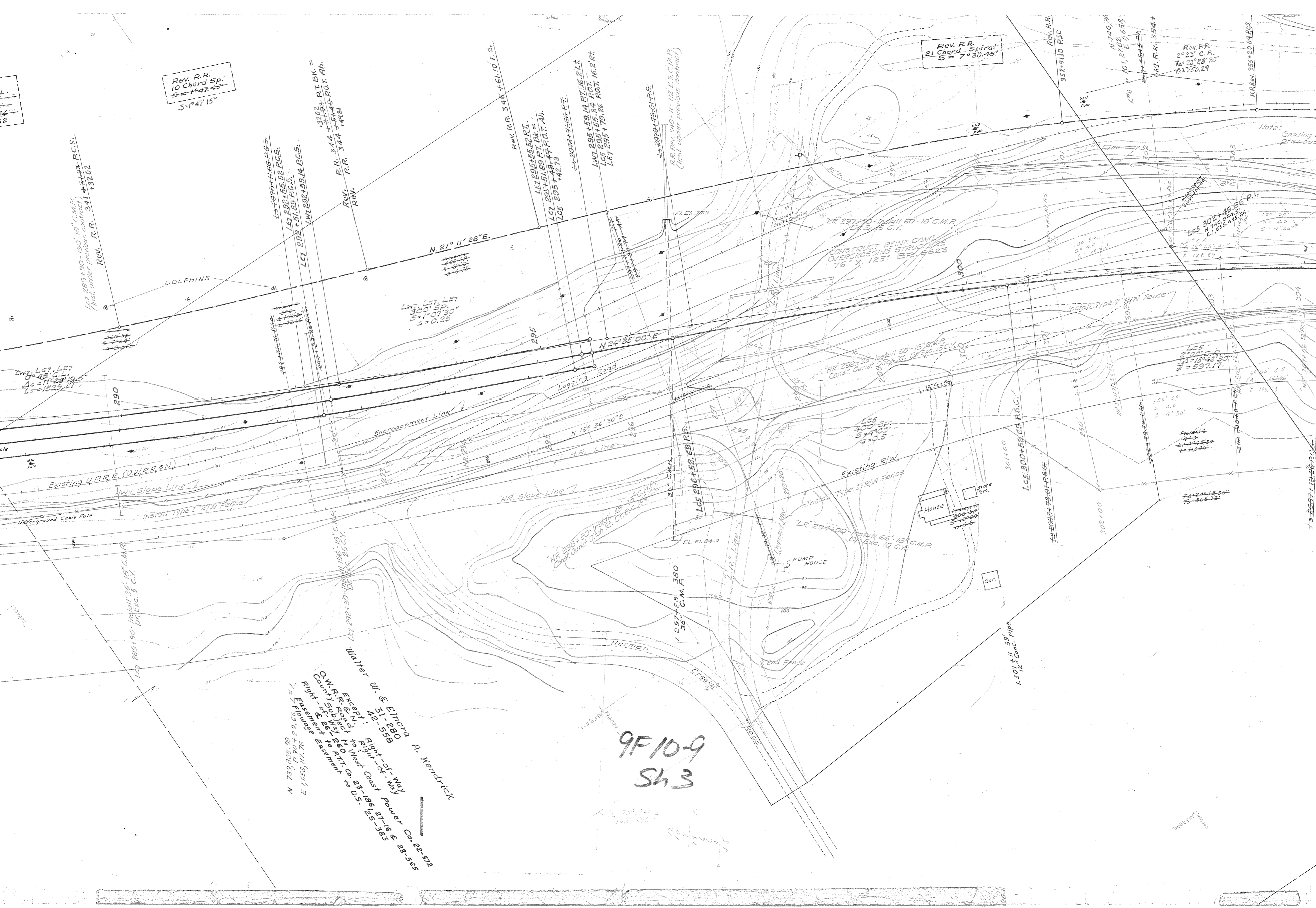
Lc5 302+49.56 P.I.
TA = 15° 48' 30"
S = 537.17'

Present
4.0
4.30'
118.00'

TA = 21° 45' 30"
S = 565.73'

9F/10-9
Sh 3

Walter W. & Ethora A. Kendrick
Right-of-Way
31-280
42-558
O.W.R.R. Except
County Sublet
Right of Way
& Easement
to U.S.
N 73° 08' 09"
P 90' + 29.65'
E 1658' 117.76'
to West Coast Power Co. 22-572
& 28-565



Rev. RR.
23' C.R.
23° 28' 23"
750.29

Rev. R.R.
21 Chord Spiral
S = 7° 30' 27"

Rev. R.R. 361450.09 FT.
R.R. 362 + 58 P.O.T.M.

Note:
Grading of "CL" Line performed under
previous contract.

CL 304+16.40
(Inst. under previous contract)

Install Std. Road Type Guard Rail
G.L. 300+00 to G.L. 309+00 - 309'

N. 41° 39' 48" E.

Existing R/W

USE THIS LINE (CL)
9-26-58

Existing Columbia River Highway N 40° 21' 30" E

N 40° 21' 13" E

"H.R." Line
USE THIS LINE
9-26-58

LEG
400' Sp.
S = 4° 00'
a = 0.5'

"HR" Slope Line

Proposed R/W
Install Type 1 R/W Fence

Sec. 33 T 3 N. R. 8 E. W.M.
Sec. 4 T 2 N. R. 8 E. W.M.

Walter & Elvora A. Kendrick
31 - 280
42 - 558

2" Iron Pipe (Found)

Subject to Flowage Easement to U.S. 1936
Except O.W.R. & N. Right of Way
Charles Richard Woodward
34-576

9F 10
Sh

L#9 N 74.2, 141.16
P 118 +00.38
E 1,659,496.32

N 74.2, 690.19
P 125 +53.23
E 1,669,010.38

LCS 327 + 22.13 P.I.
N 74.2, 753.06
E 1,660,040.21

U.S.G.S. TRIANGULATION
STATION
PARK 2

N 43° 12' 00" E

LCS 318 + 96.44 P.S.
319 + 96 + 15 + 74.6

Right of Way

LCS
500' Sp.
S = 10' 00"
G = 0.3

18" Conc. C.V.M. Pipe
327 + 23
LCS 323 + 96.44 P.S.C.
324 + 96 + 15 + 74.6

LCS C.R.
43° 12' 00"
S = 43' 36" 00"
G = 325.63

440'
43336.75'
15-530-38

FA-App 36-55'
15-8-2-5-79L

LCS 329 + 86.65
330 + 86 + 53 + 74.6

76 Hood River

9F 10-9
SH 4