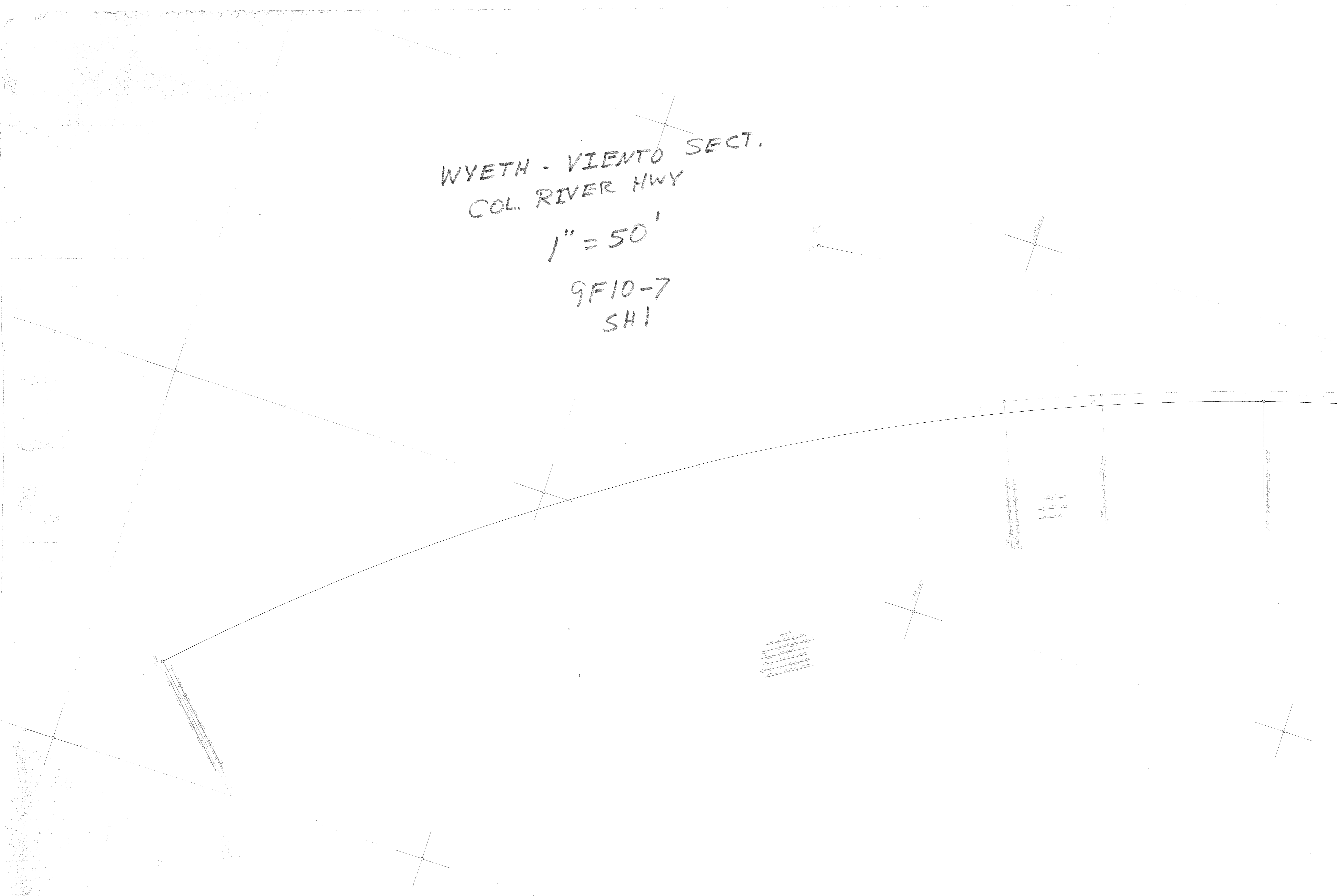


WYETH - VIENTO SECT.
COL. RIVER HWY

1" = 50'

9F10-7
SH1





9F10-7
SA2

FF 80160.00

1306R
1306S
1306T

1306U
1306V
1306W

1306X
1306Y
1306Z

1306AA
1306AB
1306AC

1306AD
1306AE
1306AF

1306AG
1306AH
1306AI

1306AJ
1306AK
1306AL

1306AM
1306AN
1306AO

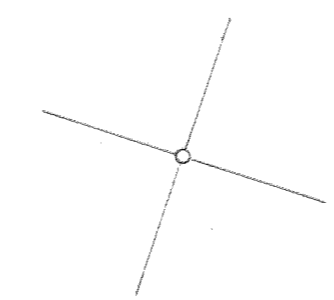
1306AP
1306AQ
1306AR

1306AS
1306AT
1306AU

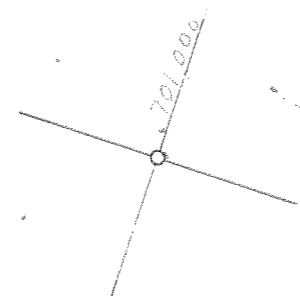
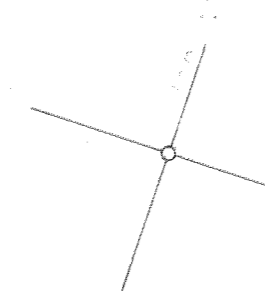
1306AV
1306AW
1306AX

1306AY
1306AZ
1306BA

9F10-7
SH3



1162' 21.30" E



40
20 00
72 00 00
72 00 00
72 00 00

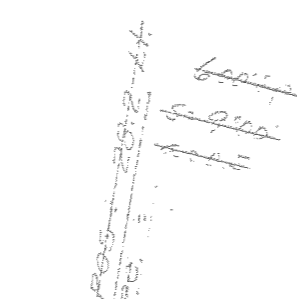
40
20 00
72 00 00
72 00 00
72 00 00

40
20 00
72 00 00
72 00 00
72 00 00

4°00' CL
TA: 24°03'30"
S: 556.52

500' Sp.
S: 10°00'
a: 0.8

500' Sp.
S: 10°00'
a: 0.8



770+92.52 P.S.C.

771+93.75 P.S.

772+95.00 P.S.

773+96.25 P.S.

774+97.50 P.S.

775+98.75 P.S.

776+100.00 P.S.

777+101.25 P.S.

778+102.50 P.S.

779+103.75 P.S.

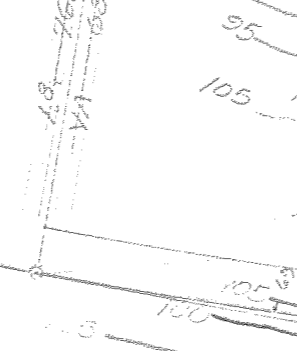
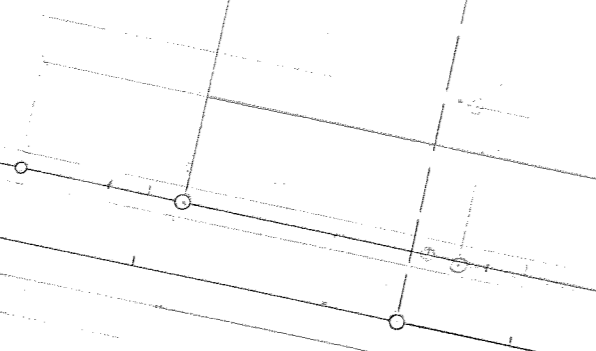
780+105.00 P.S.

781+106.25 P.S.

782+107.50 P.S.

783+108.75 P.S.

784+110.00 P.S.



770+92.52 P.S.C.

771+93.75 P.S.

772+95.00 P.S.

773+96.25 P.S.

774+97.50 P.S.

775+98.75 P.S.

776+100.00 P.S.

777+101.25 P.S.

778+102.50 P.S.

779+103.75 P.S.

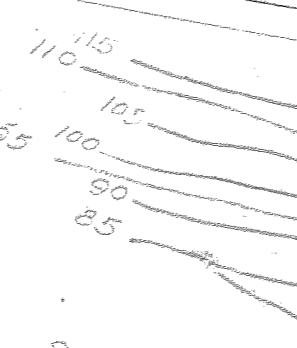
780+105.00 P.S.

781+106.25 P.S.

782+107.50 P.S.

783+108.75 P.S.

784+110.00 P.S.



770+92.52 P.S.C.

771+93.75 P.S.

772+95.00 P.S.

773+96.25 P.S.

774+97.50 P.S.

775+98.75 P.S.

776+100.00 P.S.

777+101.25 P.S.

778+102.50 P.S.

779+103.75 P.S.

780+105.00 P.S.

781+106.25 P.S.

782+107.50 P.S.

783+108.75 P.S.

784+110.00 P.S.



770+92.52 P.S.C.

771+93.75 P.S.

772+95.00 P.S.

773+96.25 P.S.

774+97.50 P.S.

775+98.75 P.S.

776+100.00 P.S.

777+101.25 P.S.

778+102.50 P.S.

779+103.75 P.S.

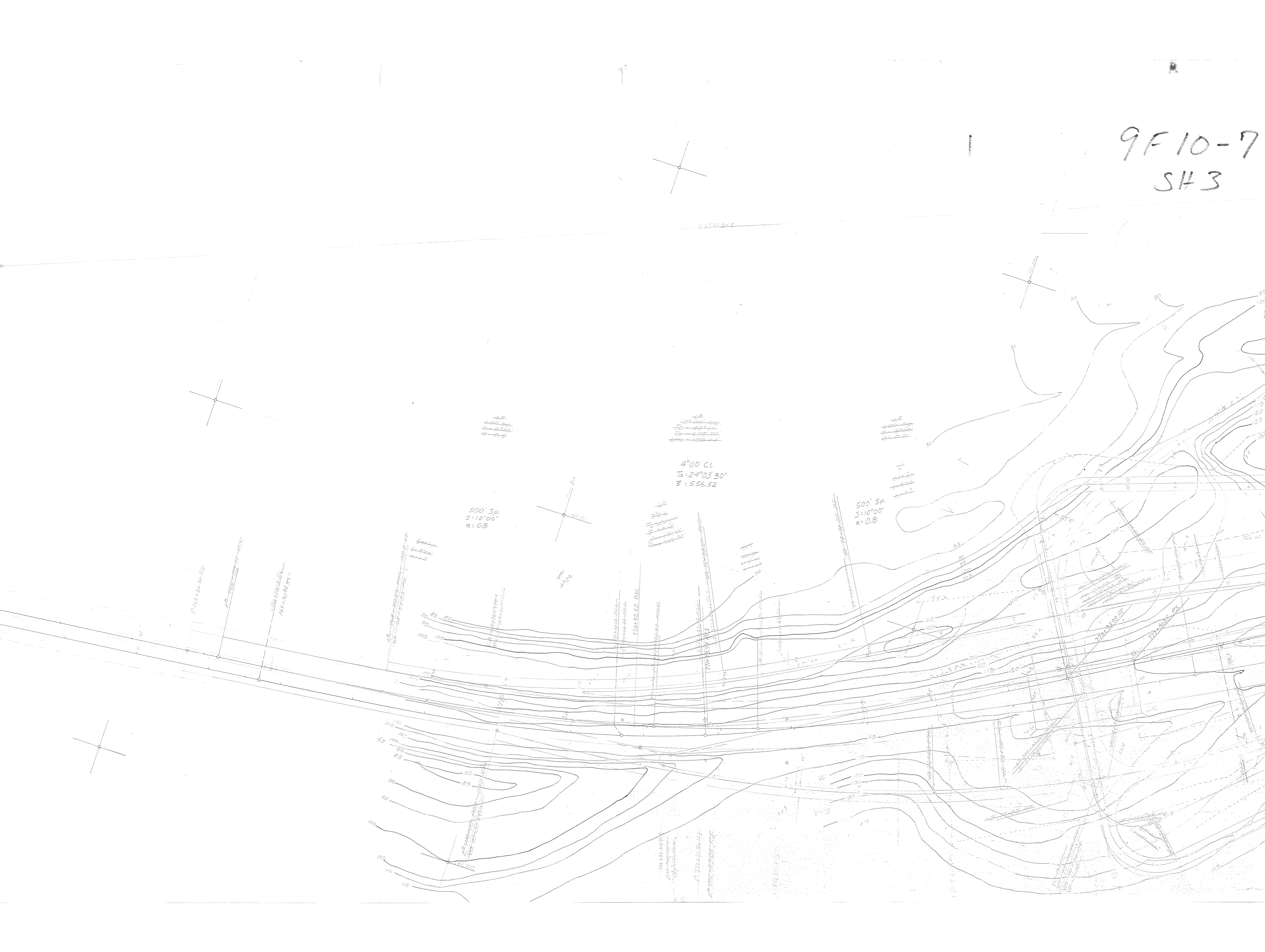
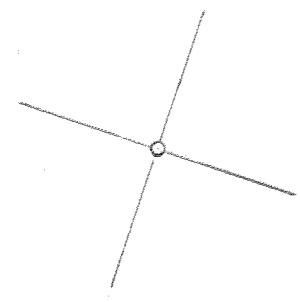
780+105.00 P.S.

781+106.25 P.S.

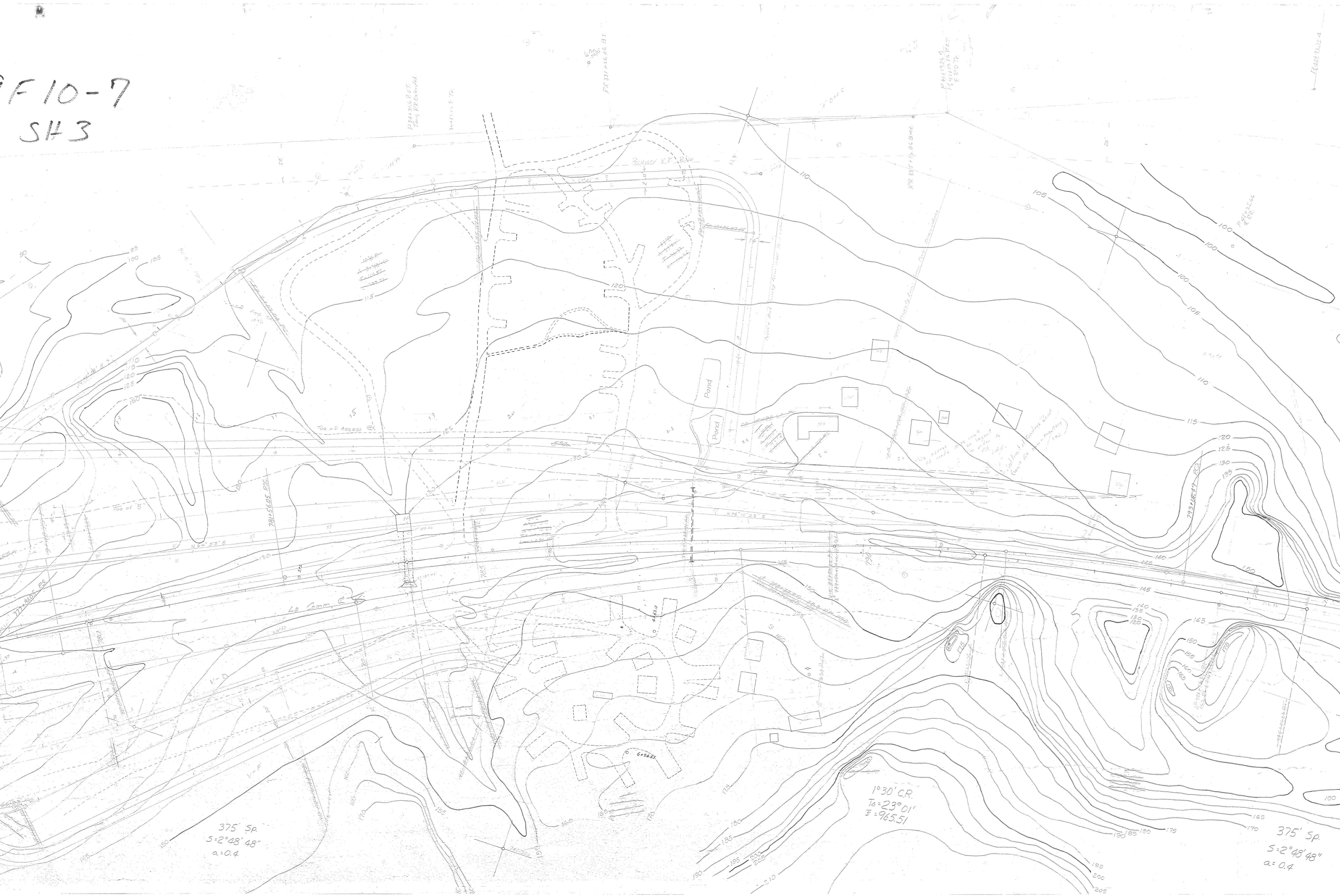
782+107.50 P.S.

783+108.75 P.S.

784+110.00 P.S.



F 10-7
SH3



9F 10-7
SH 4

