

OREGON STATE HIGHWAY DIVISION

©OREGON DEPARTMENT OF TRANSPORTATION

Forest Lands R/W

©OREGON DEPARTMENT OF TRANSPORTATION

MULTNOMAH FALLS - HOOD RIVER SECTION

COLUMBIA RIVER HIGHWAY

MULTNOMAH & HOOD RIVER COUNTIES

Scale: 1 inch = 100 feet

June, 1975

FILE NO. 48428

©OREGON DEPARTMENT OF TRANSPORTATION

DRG. NO. 9B-13-12

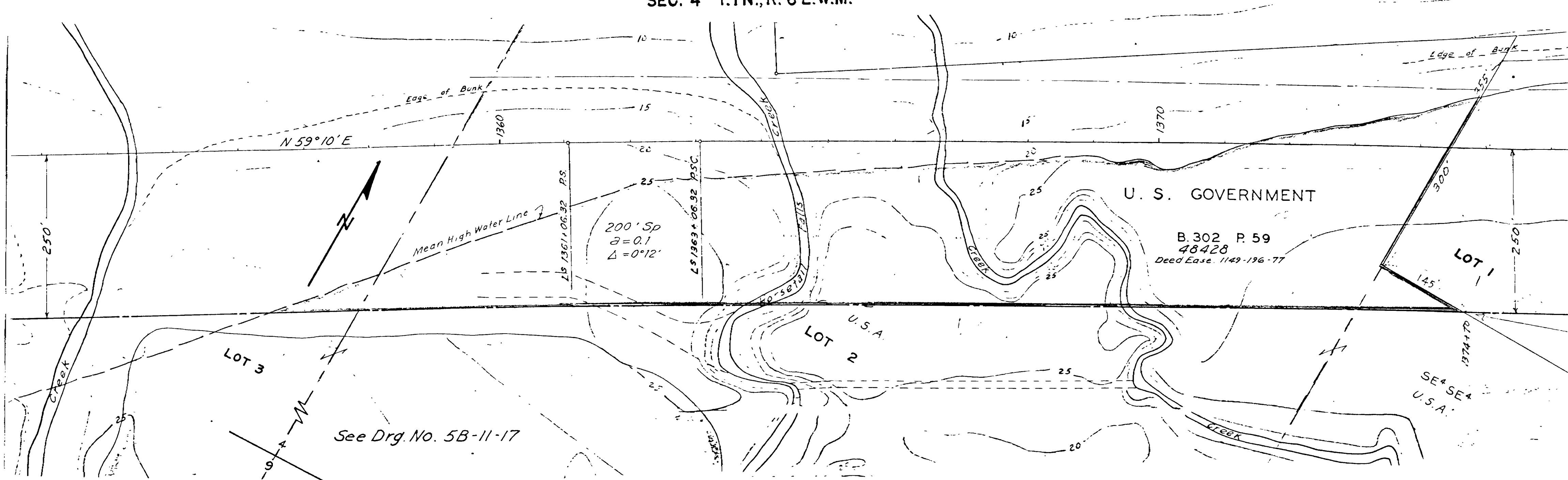
ACCESS

CONTROL

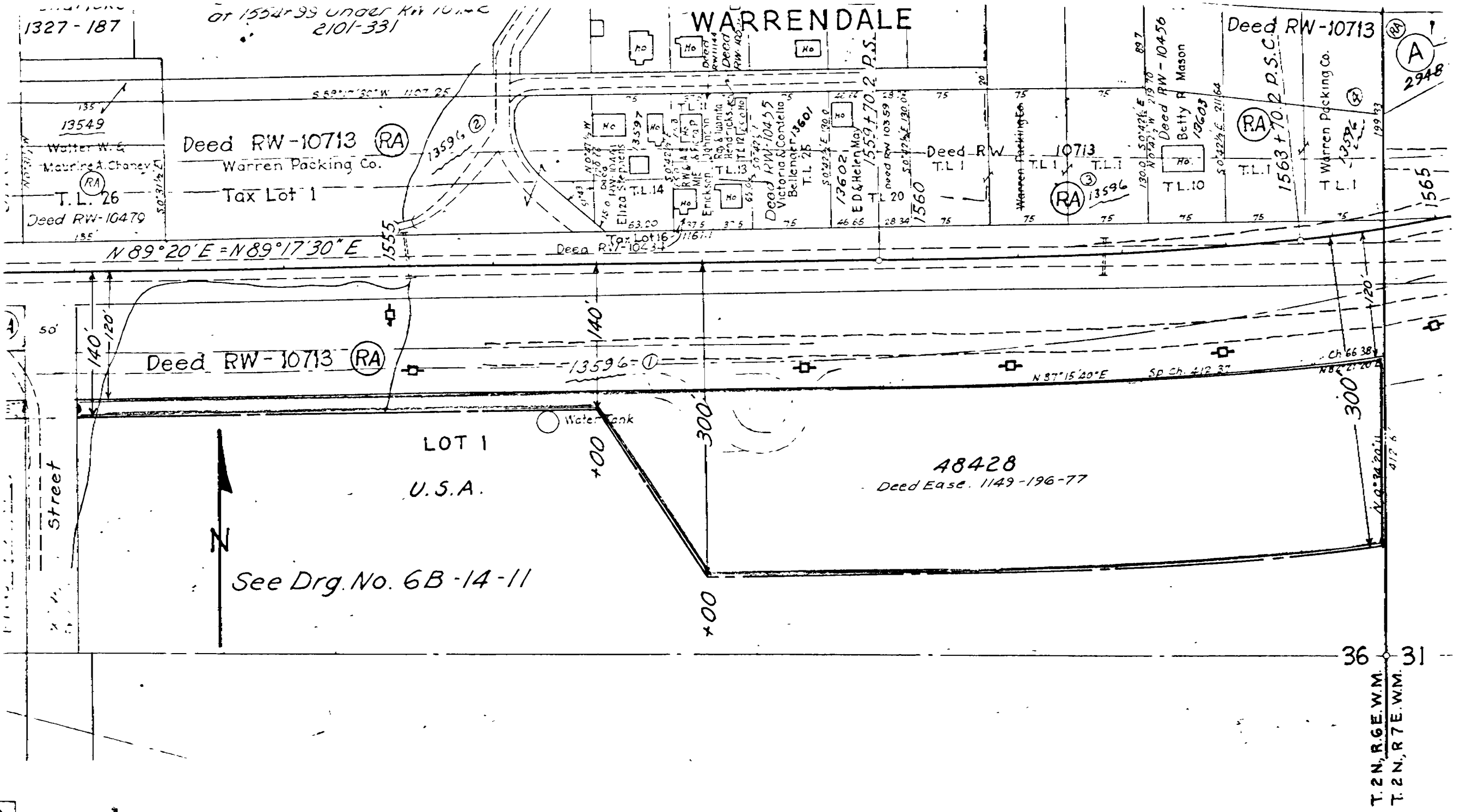
LINE

*Deed Ease. Multnomah County 1149-196-77
" Hood River County F-762586*

SEC. 4 T. 1 N., R. 6 E. W.M.

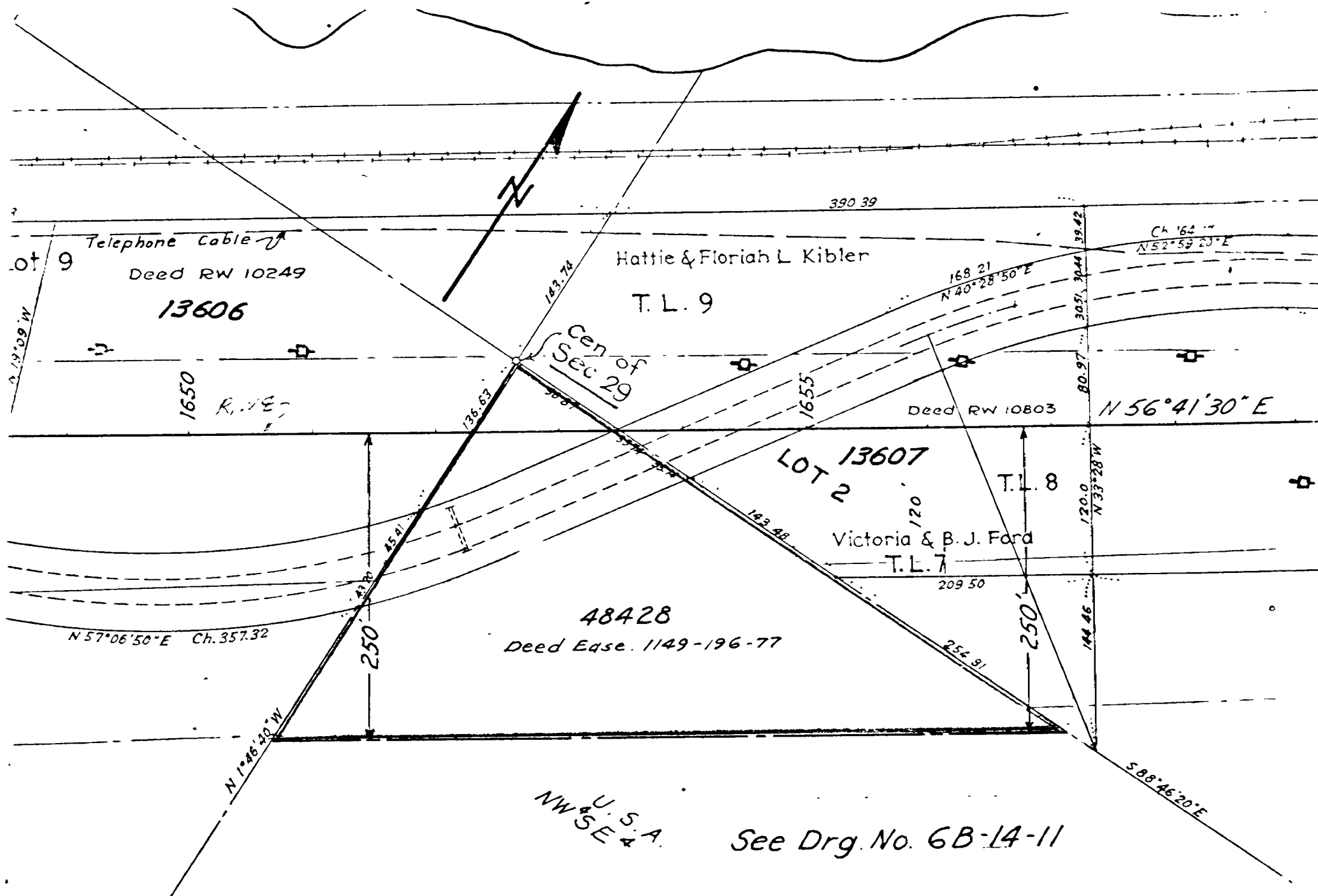


SEC. 36 T. 2 N., R. 6 E. W.M.



T. 2 N., R. 6 E. W.M.
T. 2 N., R. 7 E. W.M.

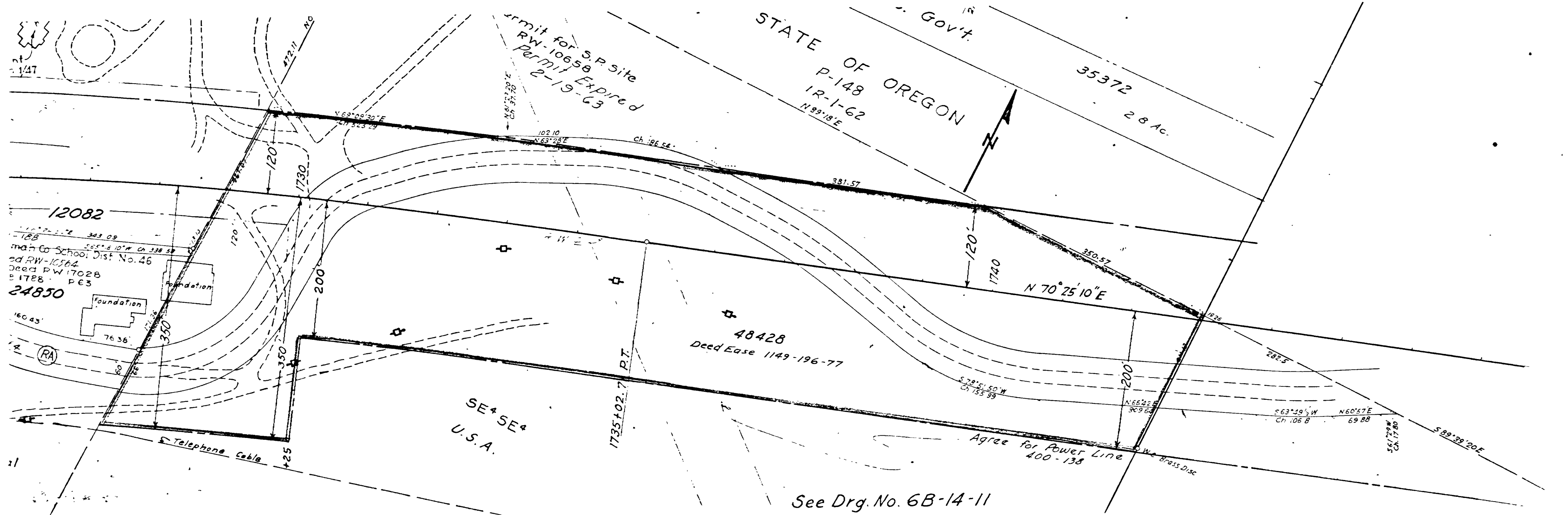
SEC. 29 T. 2 N., R. 7 E. W.M.



U.S.A.
NW SE

See Drg. No. 6B-14-11

SEC. 21 T. 2 N., R. 7 E. W.M.



Permit for S.P. site
 RW-10658
 permit Expired
 2-19-63

STATE OF OREGON
 Gov't
 P-148
 1R-1-62
 N 99° 18' E

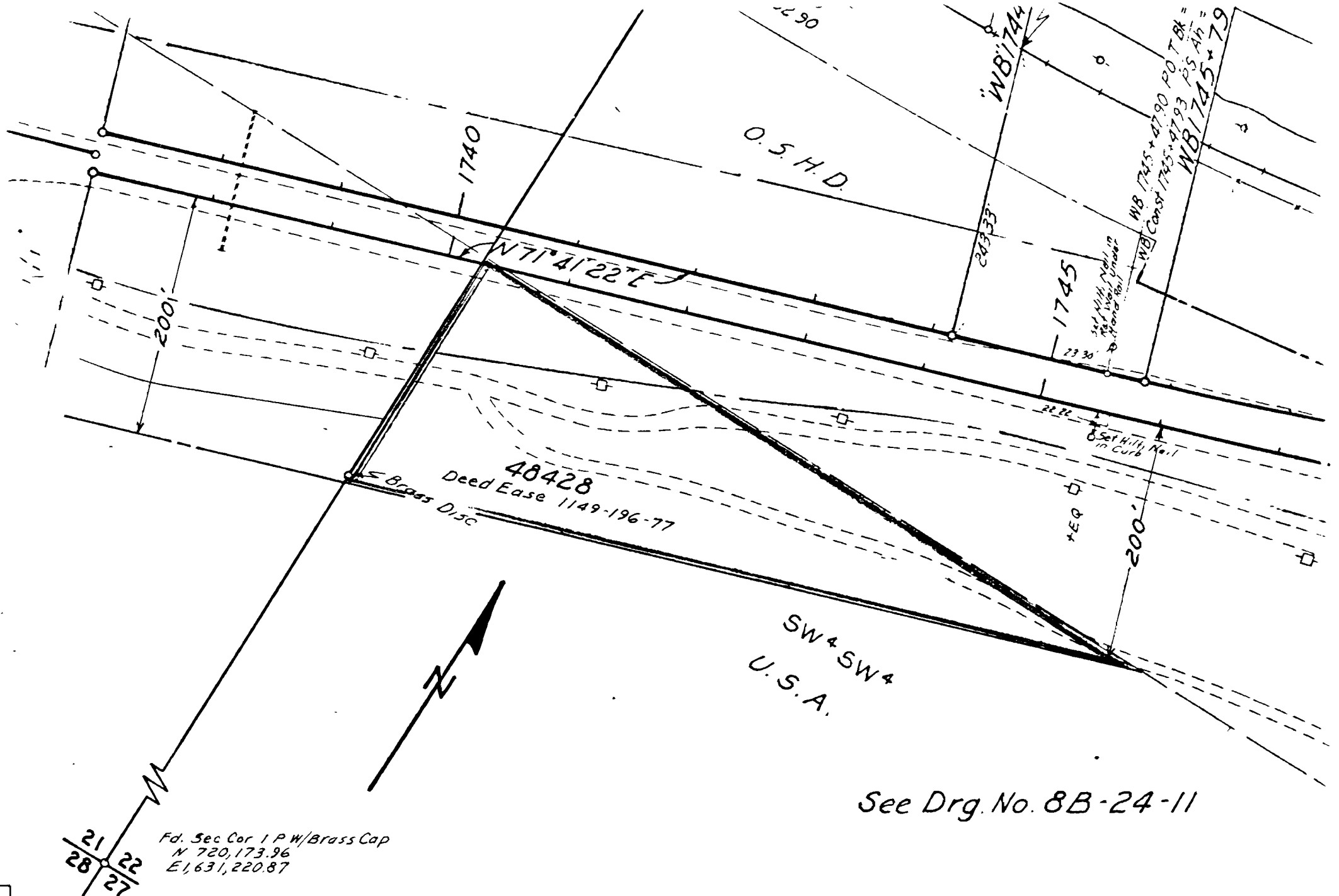
12082
 188
 man Co School Dist No. 46
 ed RW-10564
 Deed RW 17028
 P 1788 P E 3

48428
 Deed Ease 1149-196-77

Agree for Power Line
 400-138

See Drg. No. 6B-14-11

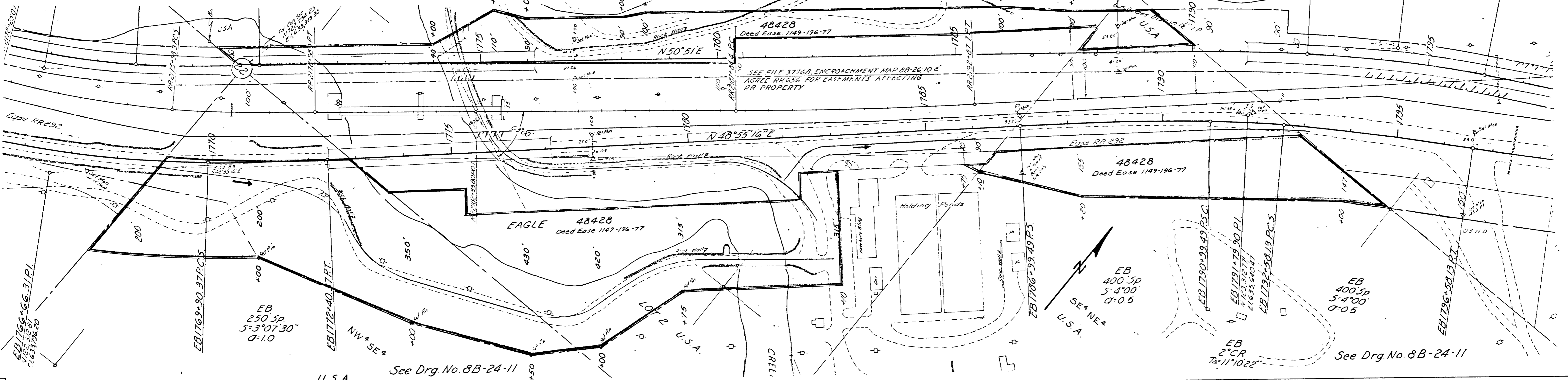
SEC. 22 T. 2 N., R. 7 E. W.M.



See Drg. No. 8B-24-11

Fd. Sec Cor 1 P W/Brass Cap
N 72,173.96
E 1,631,220.87

SEC. 22 T. 2 N., R. 7 E. W. M.



SEE FILE 37768, ENCROACHMENT MAP 8B-26-10 E
AGREE RR 656 FOR EASEMENTS AFFECTING
RR PROPERTY

EB 400.5P
S=4°00'
Q=0.5
SE+NE+
U.S.A.

EB 400.5P
S=4°00'
Q=0.5

EB
2°CR
TA=11°10'22"

See Drg. No. 8B-24-11

See Drg. No. 8B-24-11

EB
250 SP
S=3°07'30"
Q=1.0

SEC. 23 T. 2 N., R. 7 E. W.M.

Z. & N. C.

See RR 240
5B-585

See RR 240

See R/W Map
1A-8-11
for RR property

400' Sp
L = 100'
a = 0.125

LOT 4

N 56° 48' E

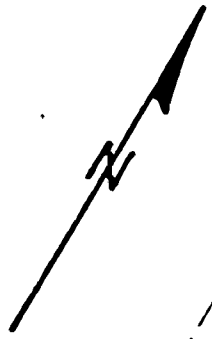
48428
Deed Ease F. 762586

N 59° 06' 30" E

NE 1/4 NW 1/4
U.S.A.

N 89° 41' 30" E
2640'

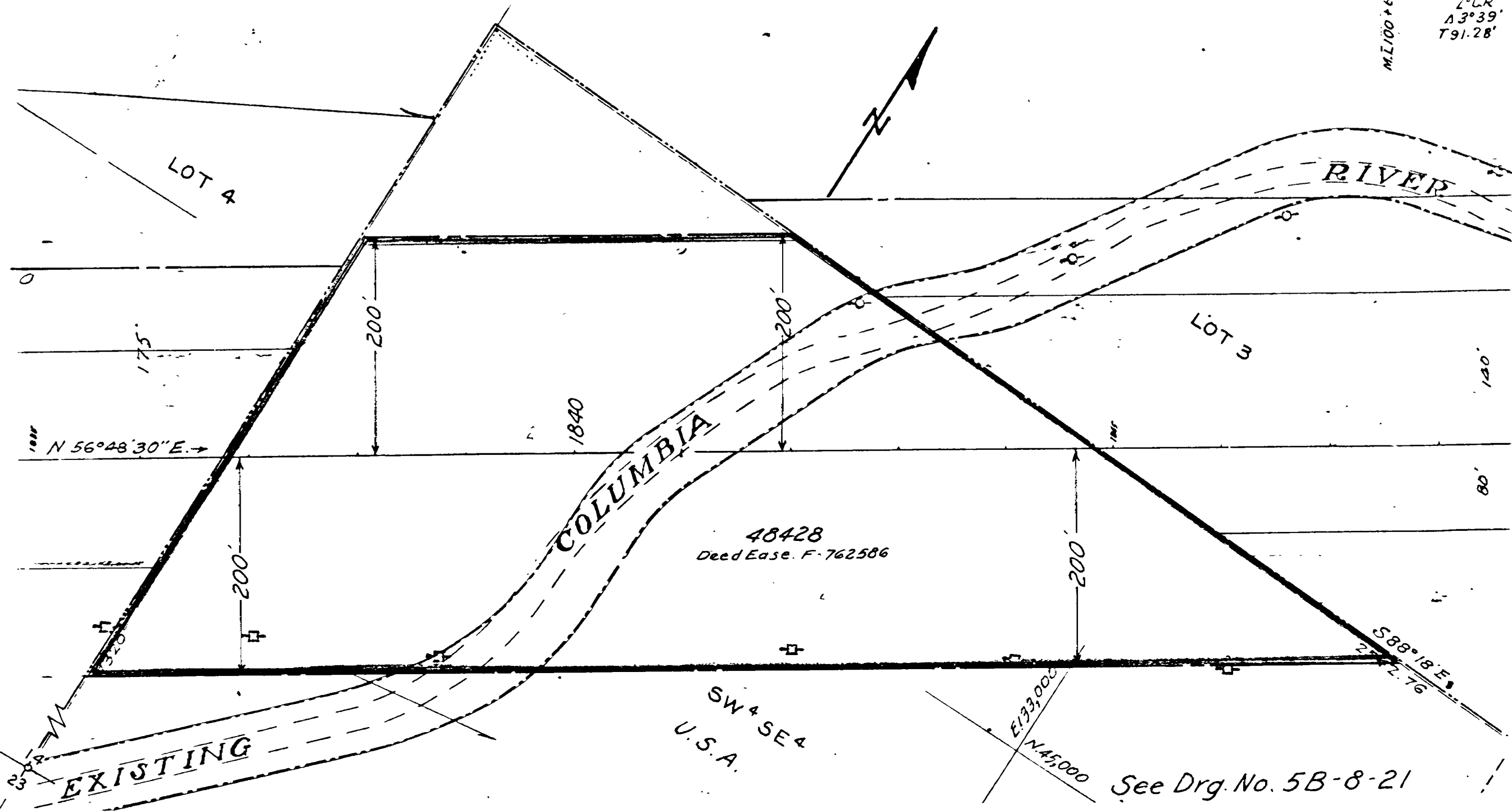
See Drg. No. 5B-8-21



SEC. 14 T. 2 N., R. 7 E. W.M.

M. L. 100 + 6

2nd CK
Δ 3° 39'
T 91.28'

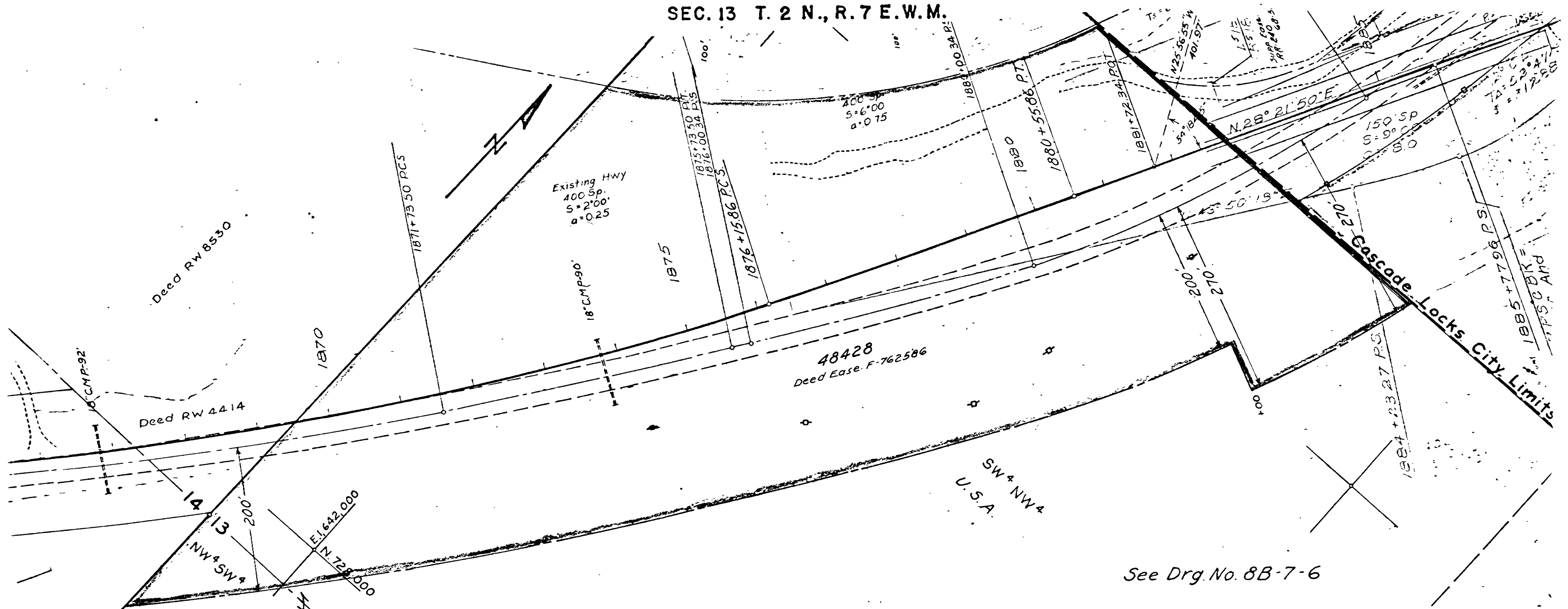


48428
Deed Ease. F. 762586

SW 4 SE 4
U.S.A.

See Drg. No. 5B-8-21

SEC. 13 T. 2 N., R. 7 E. W.M.



Deed RW 8530

Deed RW 4414

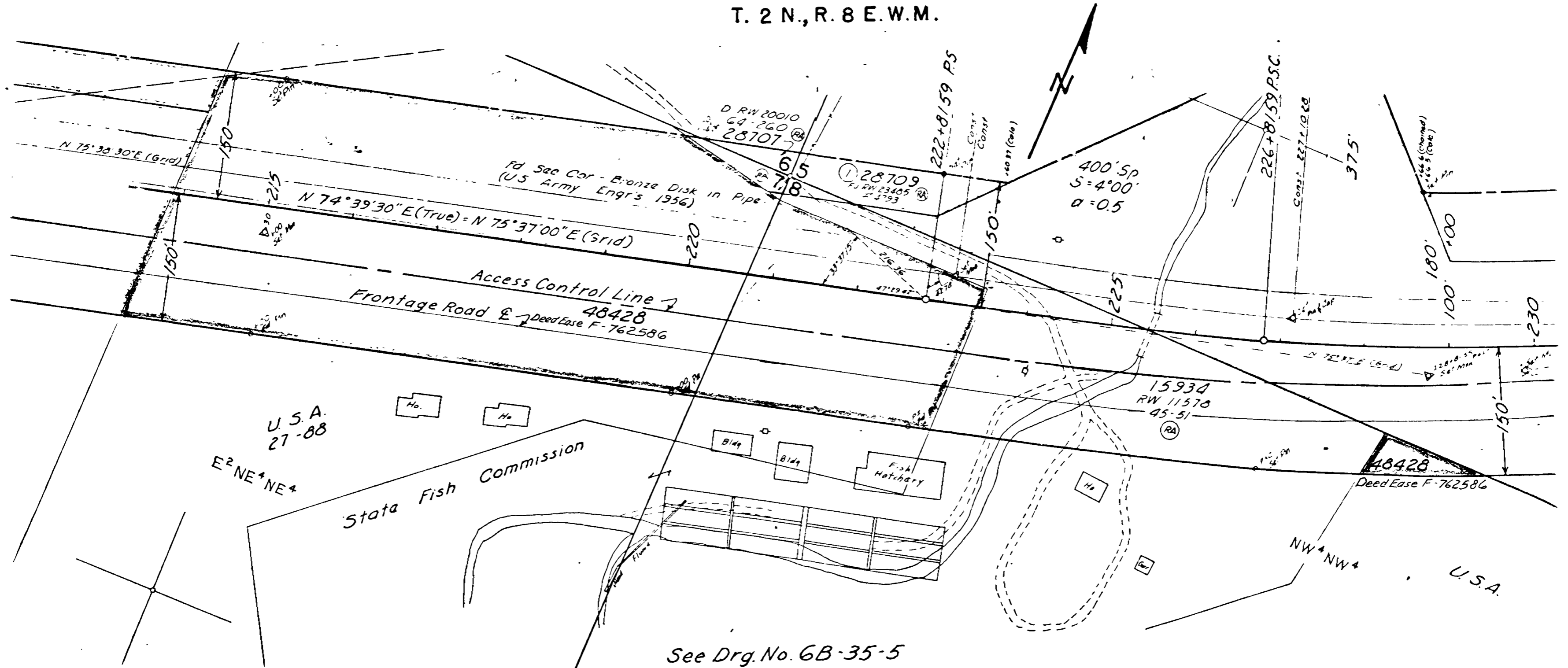
48428
Deed Ease. F-762586

SW & NW &
U.S.A.

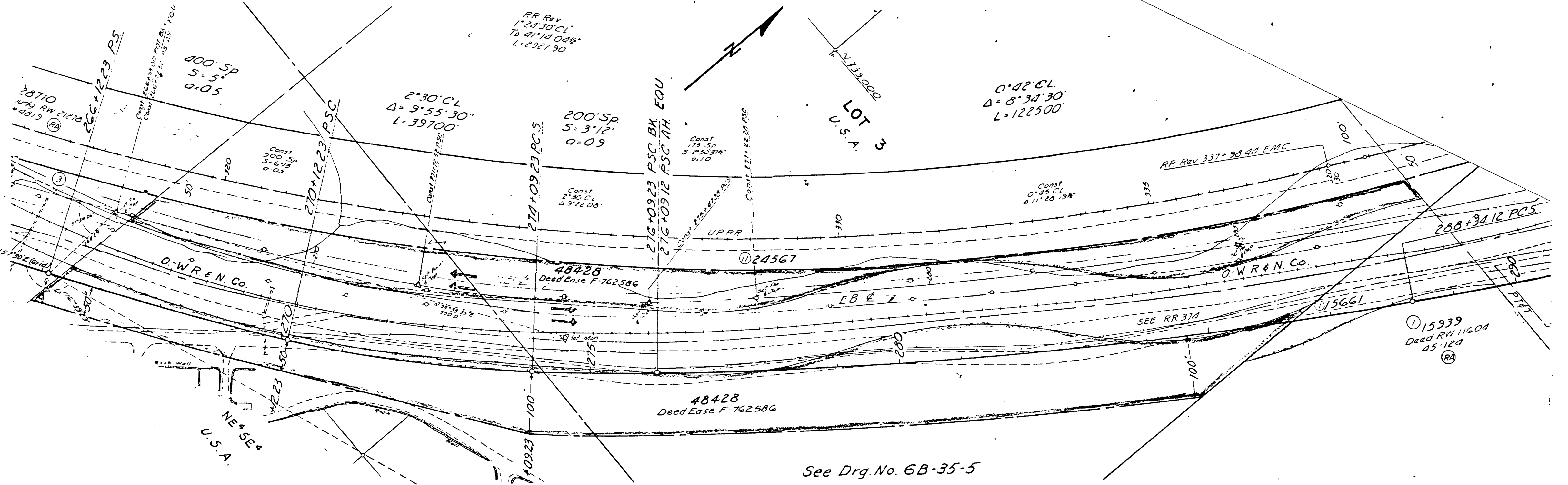
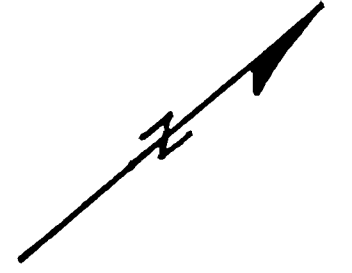
Cascade Locks City Limits

See Drg. No. 8B-7-6

T. 2 N., R. 8 E. W. M.



SEC. 5 T. 2 N., R. 8 E. W. M.



RR Rev
1°28'30" CL
To 41°14'00" R
L=2927.90

400' SP
S=5
O=0.5

2°30' CL
Δ=9°55'30"
L=39700'

200' SP
S=3'12"
O=0.9

Const
175 SP
S=2°50'37"
O=1.0

0°42' CL
Δ=8°34'30"
L=122500'

LOT 3
U.S.A.

28710
Nuty RW 21270
4819 (RA)

Const
500 SP
S=6'13"
O=0.5

Const
2°30' CL
Δ=9°22'00"

Const
0°45' CL
Δ=11°26'19"

RR Rev 337+98.44 EMC

UPRR

24567

48428
Deed Ease F-762586

O-W R & N. Co.

15939
Deed RW 11604
45-124 (RA)

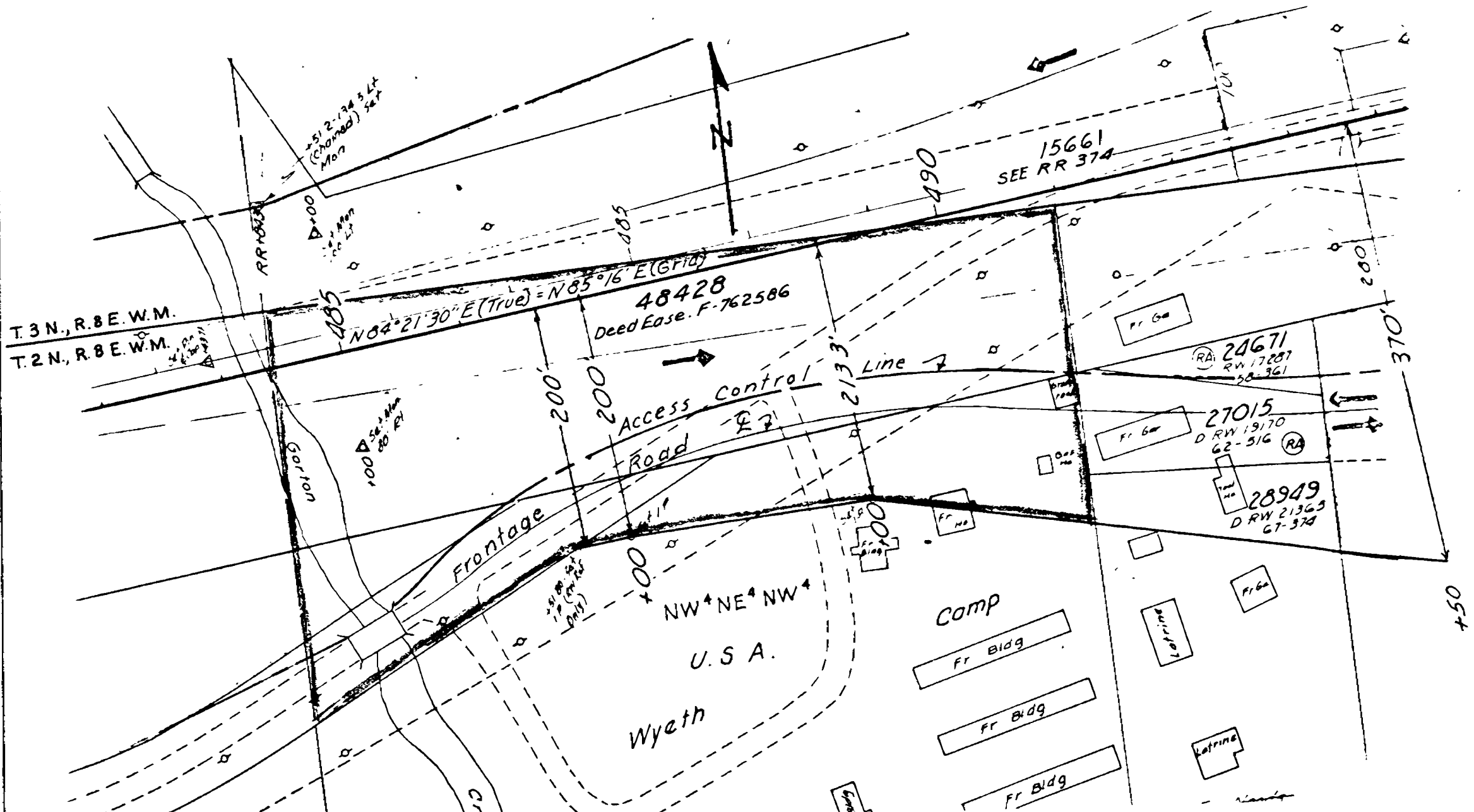
O-W R & N. Co.

SEE RR 374

48428
Deed Ease F-762586

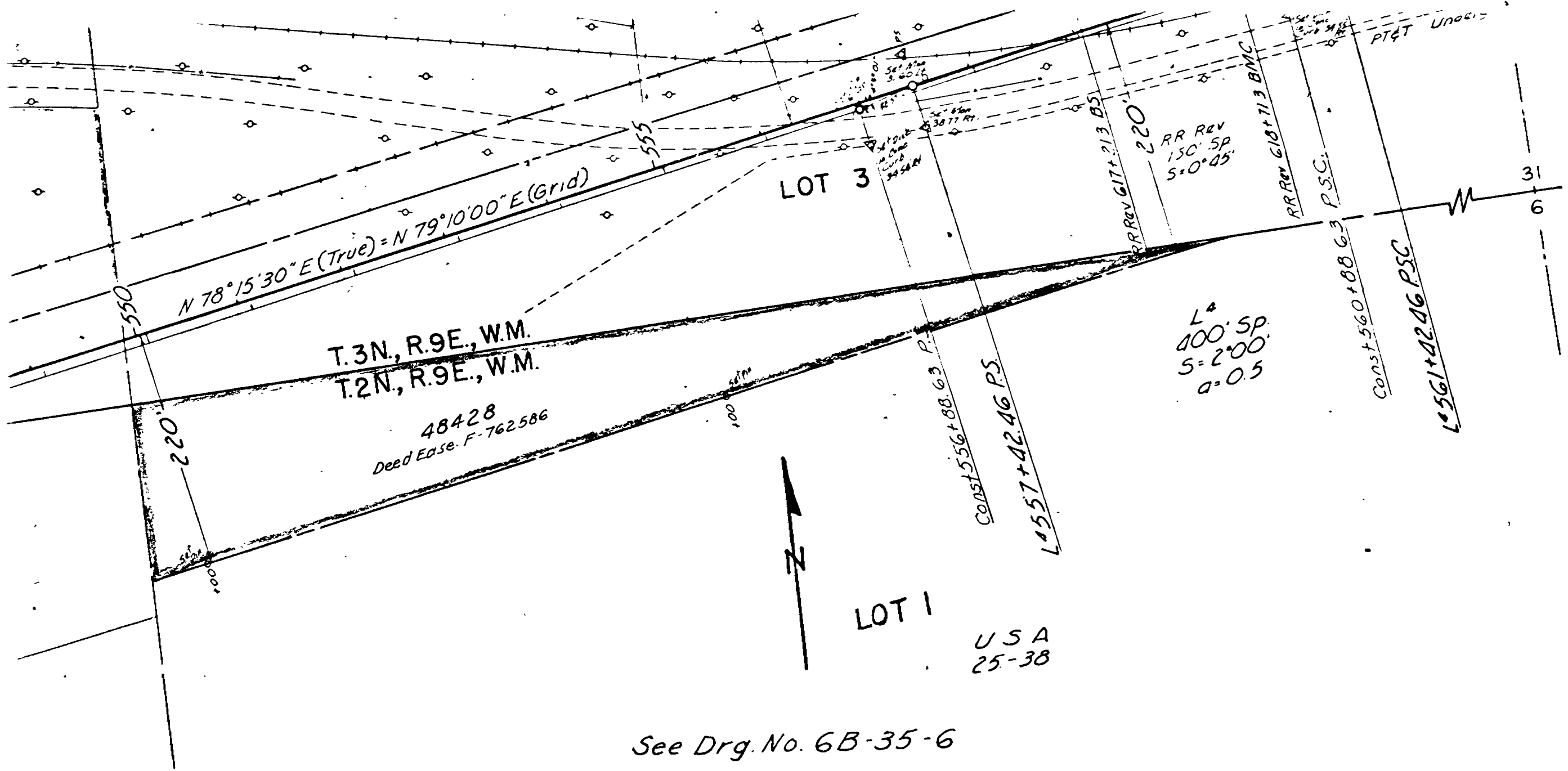
See Drg. No. 6B-35-5

SEC. 1 T. 2 N., R. 8 E. W.M.

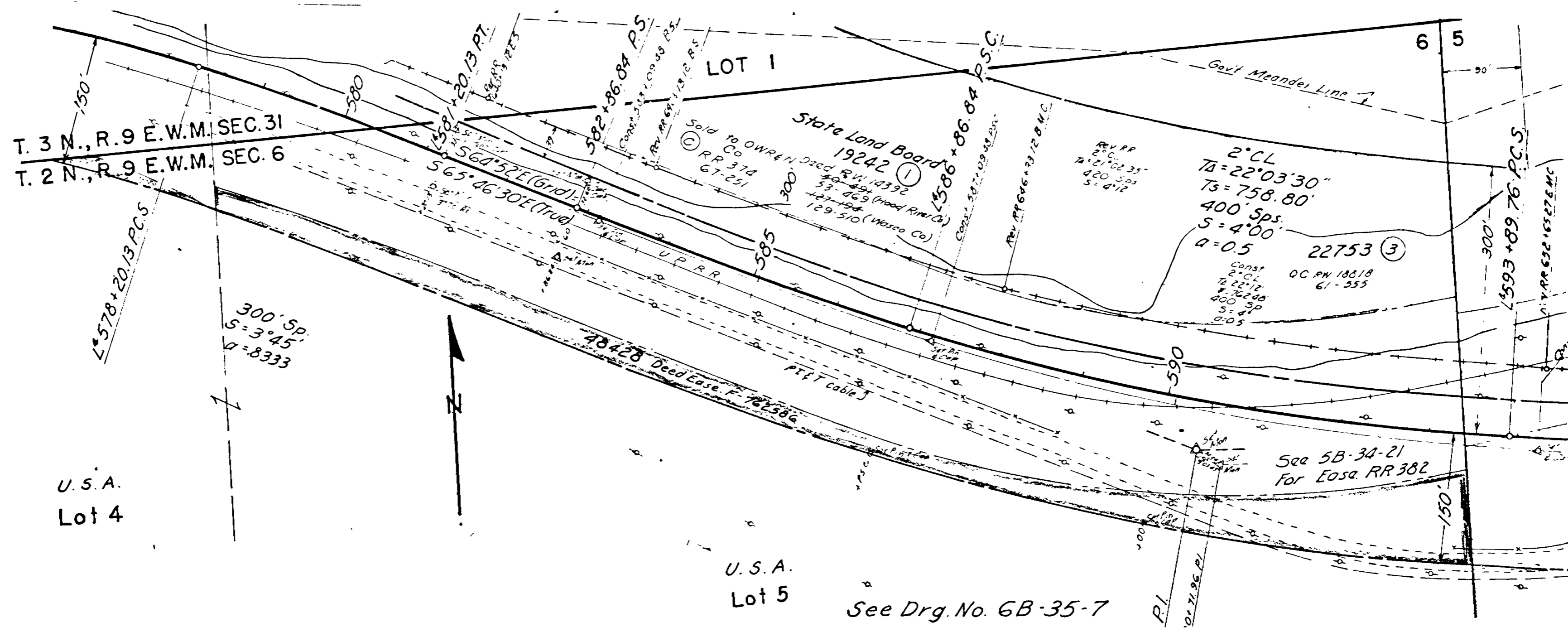


See Drg. No. 6B-35-6

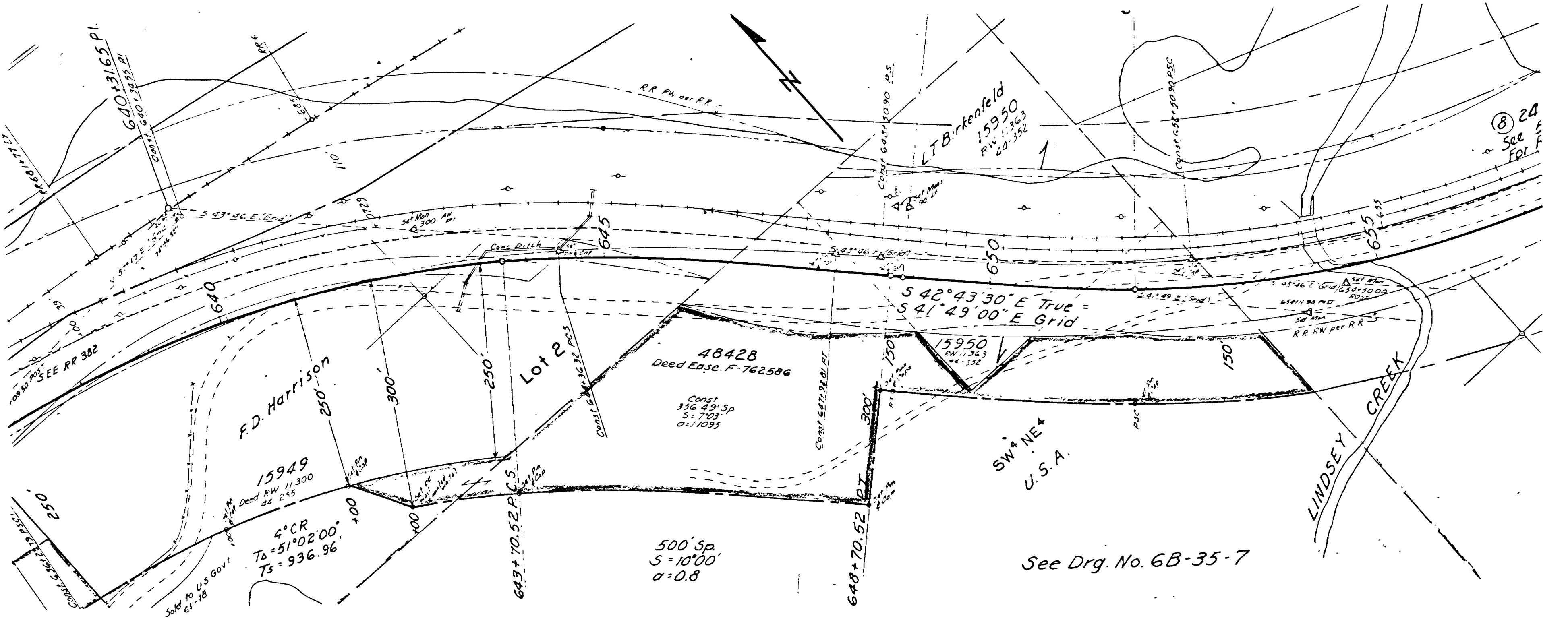
SEC. 6 T.2 N., R.9 E. W.M.



SEC. 6 T. 2 N., R. 9 E. W. M.



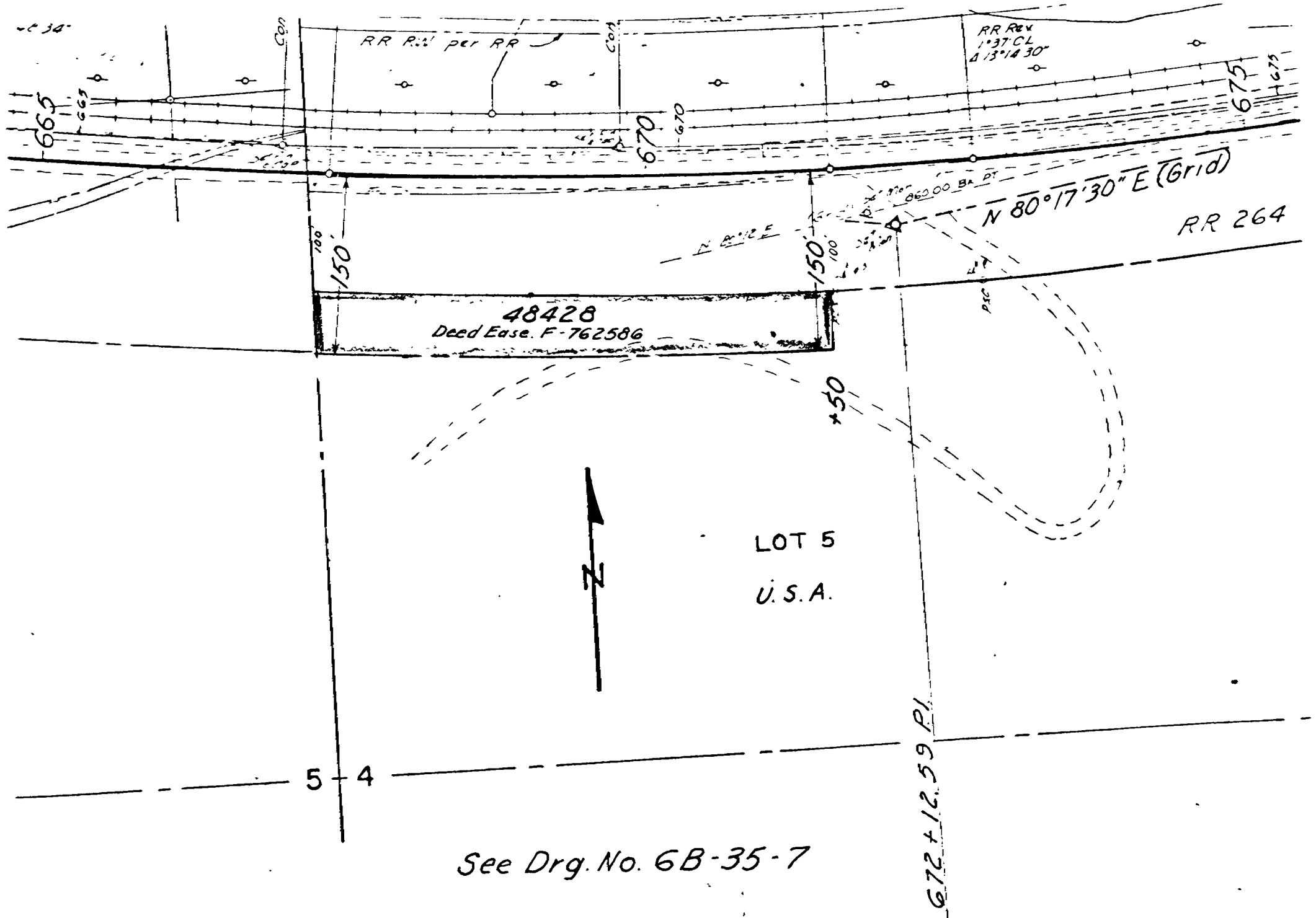
SEC. 5 T. 2 N., R. 9 E. W.M.

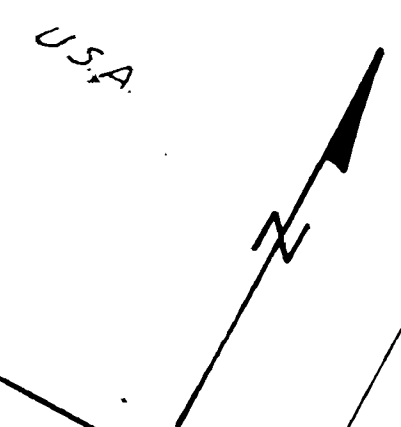


⑧ 24
See
For F

See Drg. No. 6B-35-7

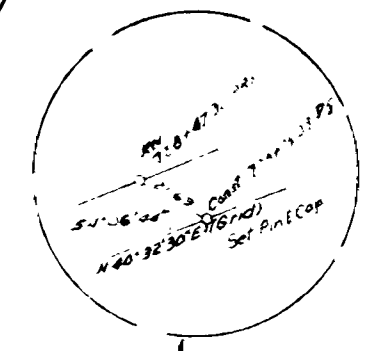
SEC. 4 T. 2 N., R. 9 E. W.M.





SEC. 34 T. 3 N., R. 9 E. W.M.

742+01.42 P.I.



State Land Board
SEE 7B-16-7

390 SP
S=3°48'09"
Q=0.5

337.5 SP
S=3°26'43"
Q=0.5

390 SP
S=3°48'09"
Q=0.5

UNION PACIFIC RR CO

N 39°11' E TRUE = N 40°01' E GRID

728+4791 P.S. 128115 01

732+4791 P.S.C. BK.
733+43.15 P.O.C. AN.

Cons.
300 SP
S=3°36'6"
Q=0.5

48428
Deed Ease. F-762586
Lot 6
U.S.A.

Cons.
1°52' CR
TA=43°31'
TS=1704.77
R=1420.33

2° CR
TA=43°50'
TS=1353.51
400 Sps.
S=4°00'
Q=0.5

See Drg. No. 6B-35-7

751+3482 P.C.S.