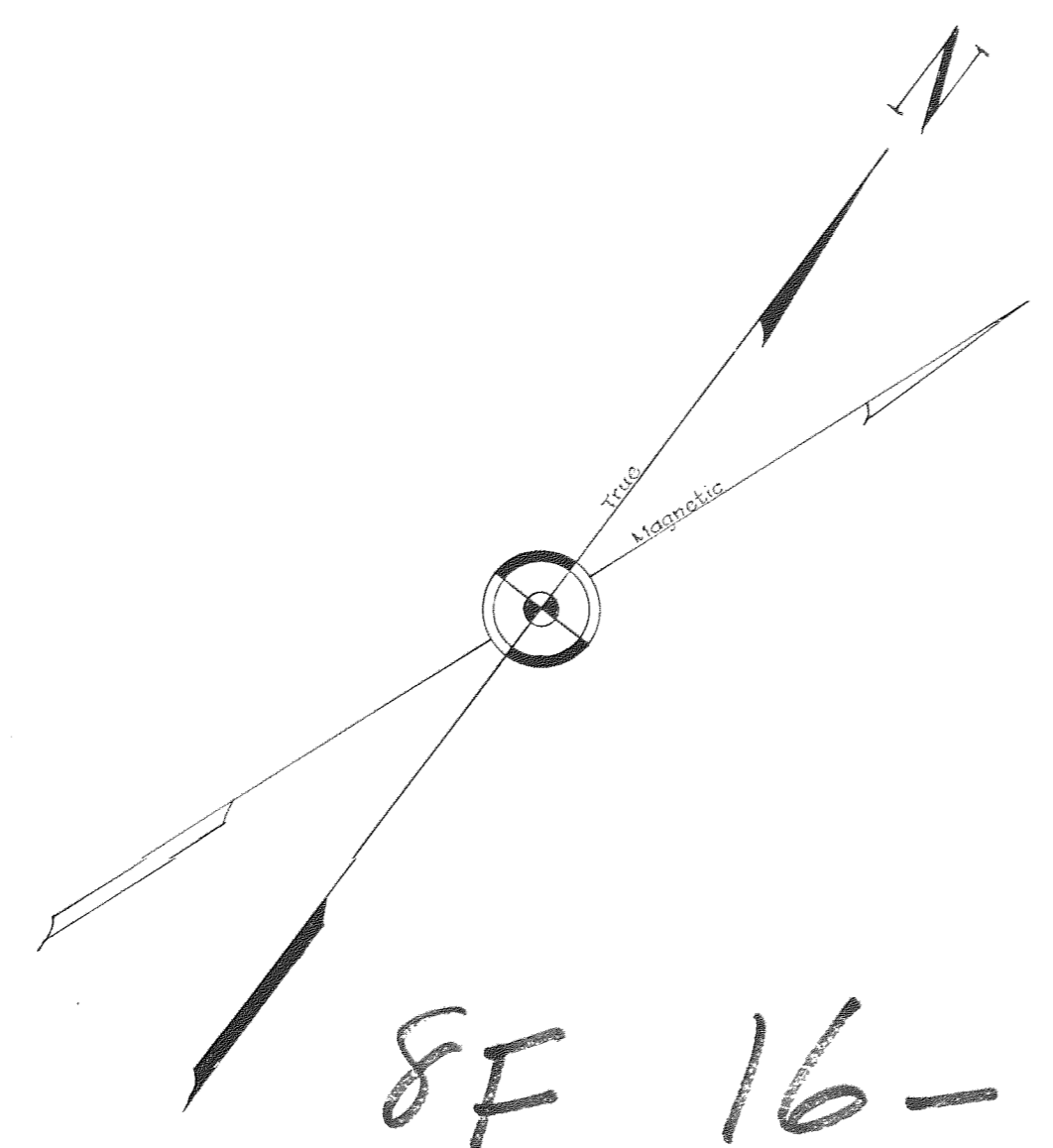


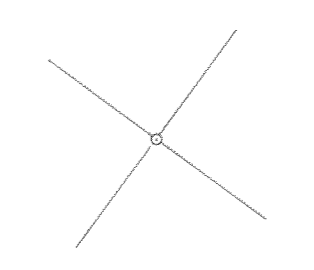
—◆—  
\* OREGON STATE HIGHWAY DEPARTMENT \*  
\* LOCATION MAP \*  
E. CASCADE LOCKS JCT. - FOUNTAIN SLIDE SECTION  
COLUMBIA RIVER HIGHWAY

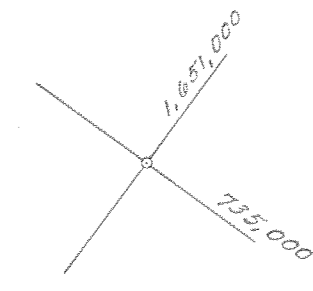
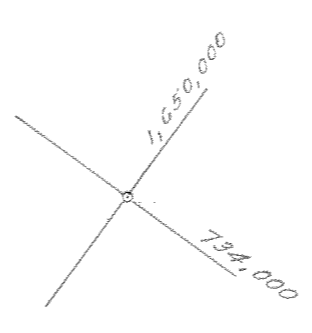
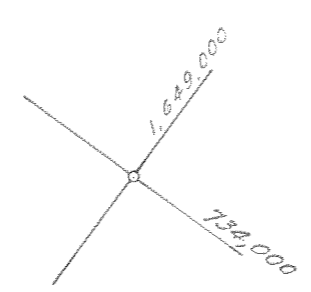
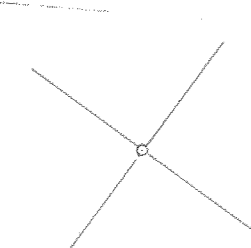
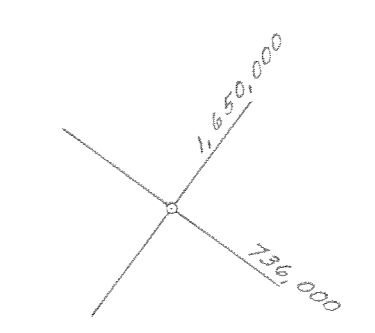
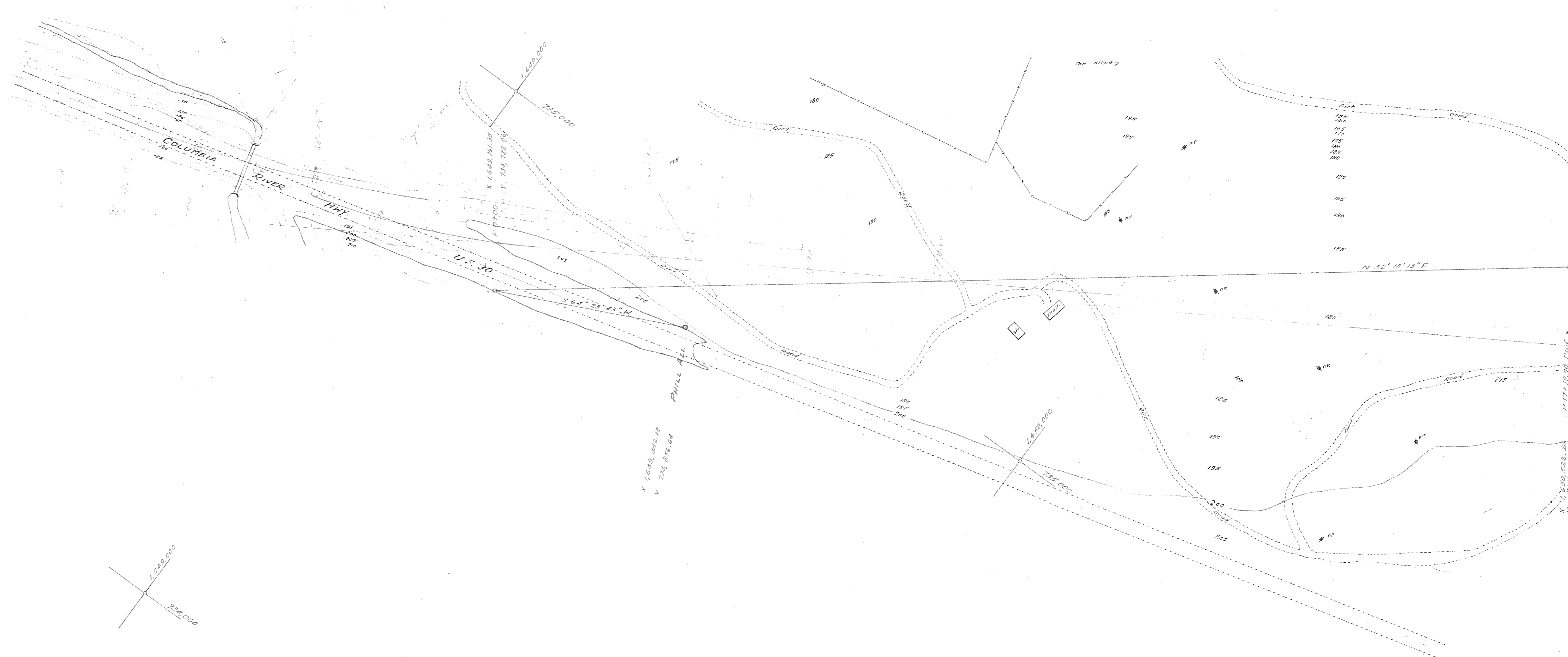
HOOD RIVER COUNTY

E. S. Hunter, Resident Engineer      July, 1957  
Oregon Coordinate System, North Zone  
Scale: 1" = 100 ft.



8F 16-12  
541







8F 16-12

SH 2

8F 16-12  
SH 3

FISH COMM.  
Holding Ponds

P 21, 62, 34  
A 0° 57' 23" 00" W  
X 1, 650, 370.91  
Y 716, 429.58

P 33, 75, 57  
A 30° 09' 43" 00" W  
X 1, 651, 838.21  
Y 716, 119.40

P 41, 71, 51  
A 54° 20' 00" 00" W  
X 1, 642, 563.13  
Y 717, 191.31

P 46, 116, 65  
A 6° 31' 53" 11" E  
X 1, 653, 820.30  
Y 717, 212.43

P 11, 10, 10  
A 91° 53' 15" 00" W  
X 1, 650, 522.24  
Y 715, 711.72

P 10, 85, 36  
A 8° 03' 10" 00" E  
X 1, 650, 801.46  
Y 715, 761.15

P 20, 82, 97  
A 29° 43' 53" 00" W  
X 1, 650, 852.38  
Y 715, 863.97

P 22, 71, 97  
A 29° 43' 53" 00" W  
X 1, 651, 044.55  
Y 715, 861.70

P 25, 61, 29  
A 8° 23' 00" 00" E  
X 1, 651, 125.75  
Y 715, 923.43

P 27, 44, 31  
A 4° 30' 19" 00" E  
X 1, 651, 500.06  
Y 716, 022.28

P 29, 41, 12  
A 16° 01' 10" 00" E  
X 1, 651, 627.16  
Y 716, 144.79

P 31, 61, 81  
A 14° 28' 21" 00" W  
X 1, 651, 715.79  
Y 716, 376.65

P 34, 43, 37  
A 0° 53' 30" 00" E  
X 1, 651, 852.04  
Y 716, 522.46

P 37, 21, 01  
A 30° 09' 43" 00" W  
X 1, 651, 208.65  
Y 716, 142.01

P 39, 23, 60  
A 30° 09' 43" 00" W  
X 1, 652, 327.60  
Y 716, 204.39

P 41, 58, 05  
A 44° 03' 23" 11" E  
X 1, 652, 558.05  
Y 716, 294.40

P 42, 50, 14  
A 29° 43' 53" 00" W  
X 1, 652, 680.30  
Y 717, 212.43

P 43, 19, 27  
A 14° 28' 21" 00" W  
X 1, 652, 801.46  
Y 717, 261.15

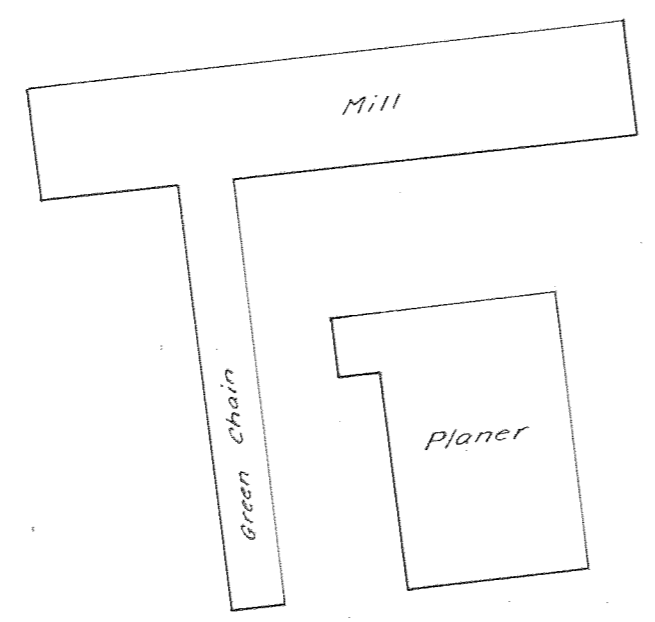
P 44, 10, 14  
A 29° 43' 53" 00" W  
X 1, 653, 022.38  
Y 717, 311.72

526.13  
253102

0' 0" 0"  
0' 0" 0"  
0' 0" 0"  
0' 0" 0"

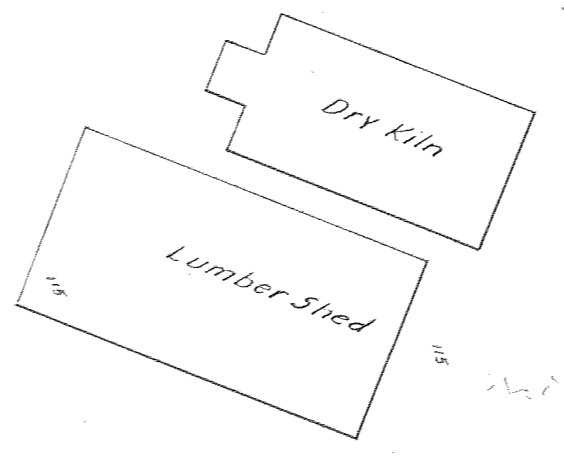
1,653,000  
728,000

1,653,000  
728,000



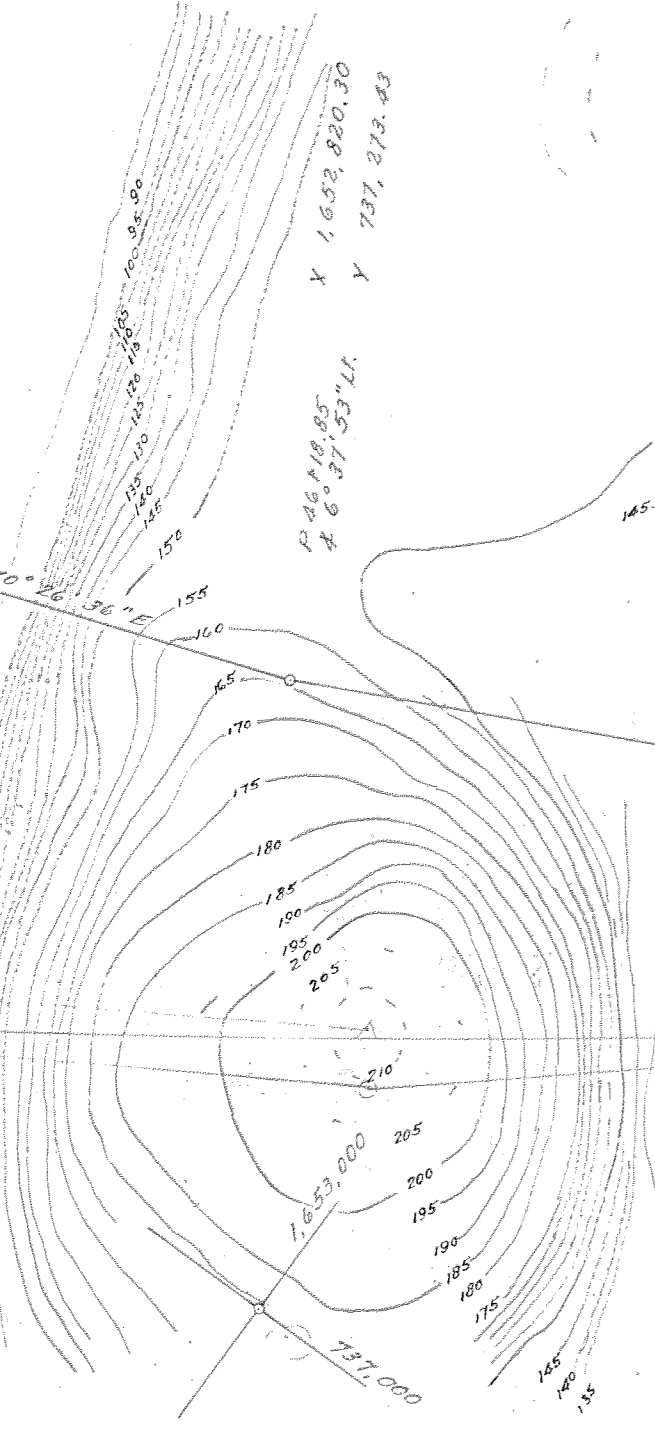
CASCADE LOCKS LUMBER CO.

Lumber Yard



Timber

1,653,000  
728,000

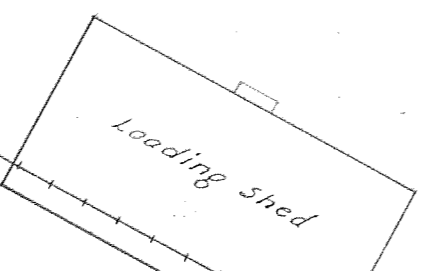


87 16-12  
SH3

N 53° 48' 43" E

N 24° 51' 20" E

Lumber Yard



1,653,000  
728,000

PC 10110.00, 10110.00

PC 10110.00, 10110.00

PC 10110.00, 10110.00

PC 10110.00, 10110.00

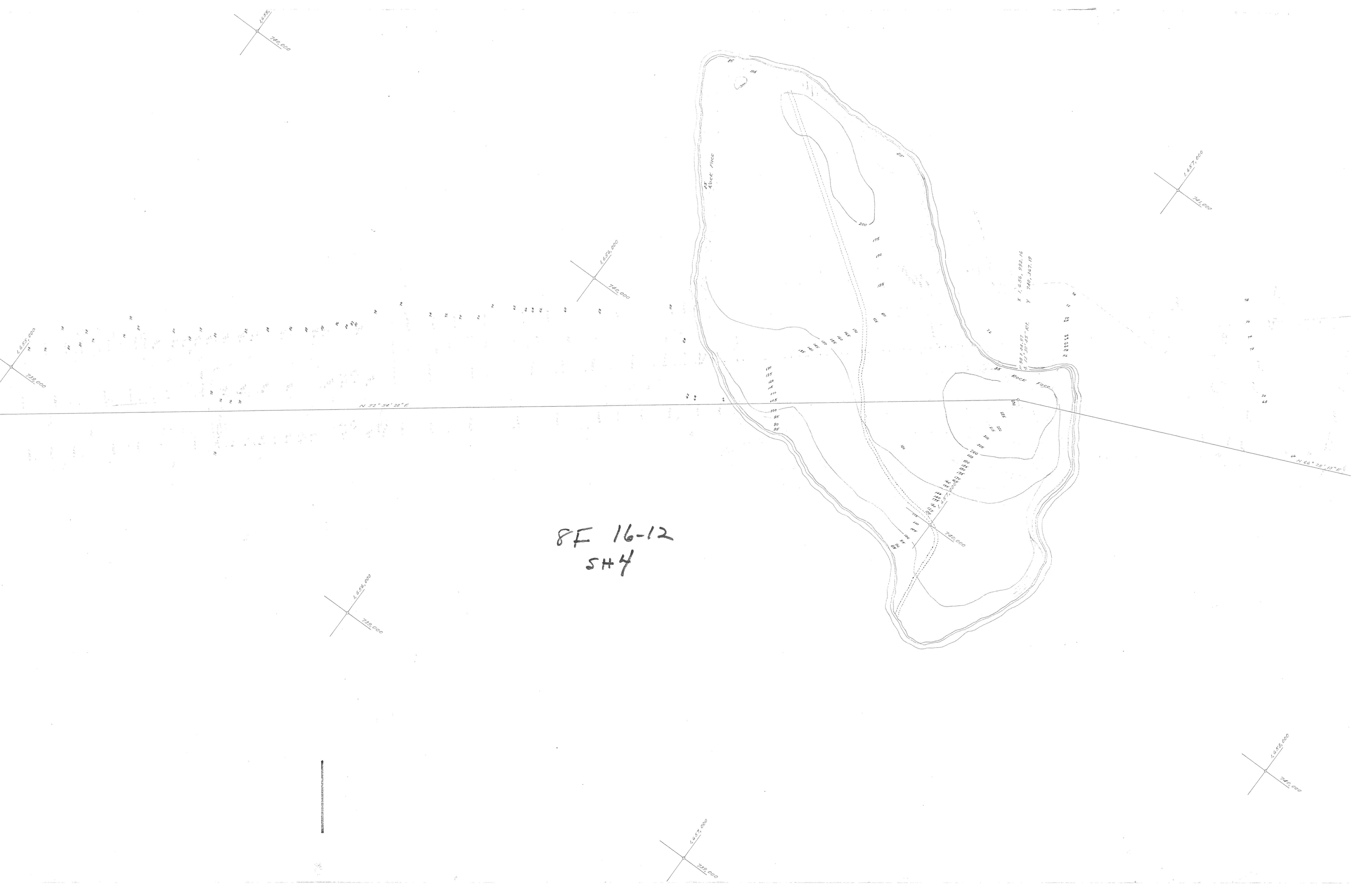
PC 10110.00, 10110.00

RR 1522

PC 10110.00, 10110.00

PC 10110.00, 10110.00

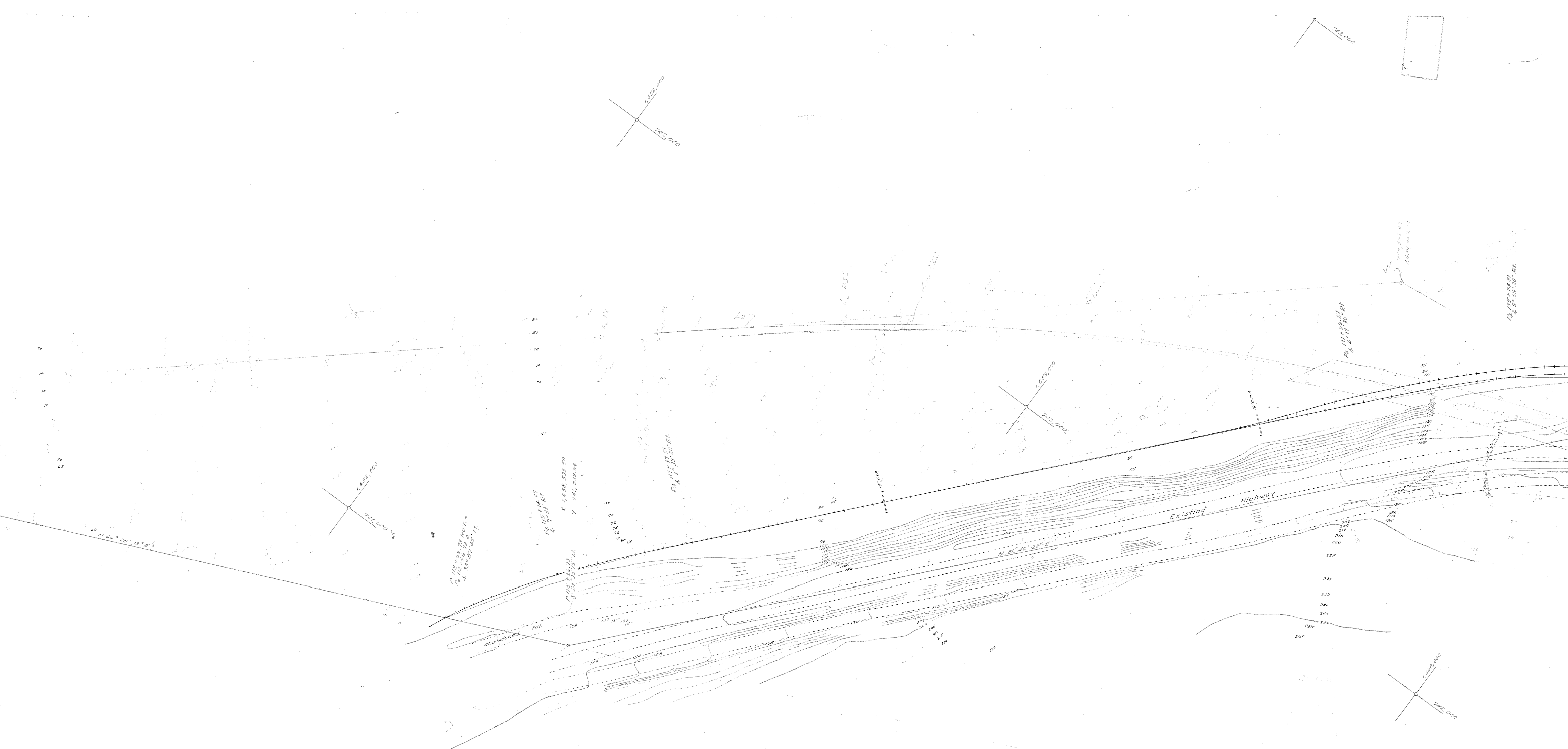
PC 10110.00, 10110.00  
PC 10110.00, 10110.00



8F 16-12  
SH4

X 1,636,982.16  
Y 740,387.19

VERTICAL SCALE BAR

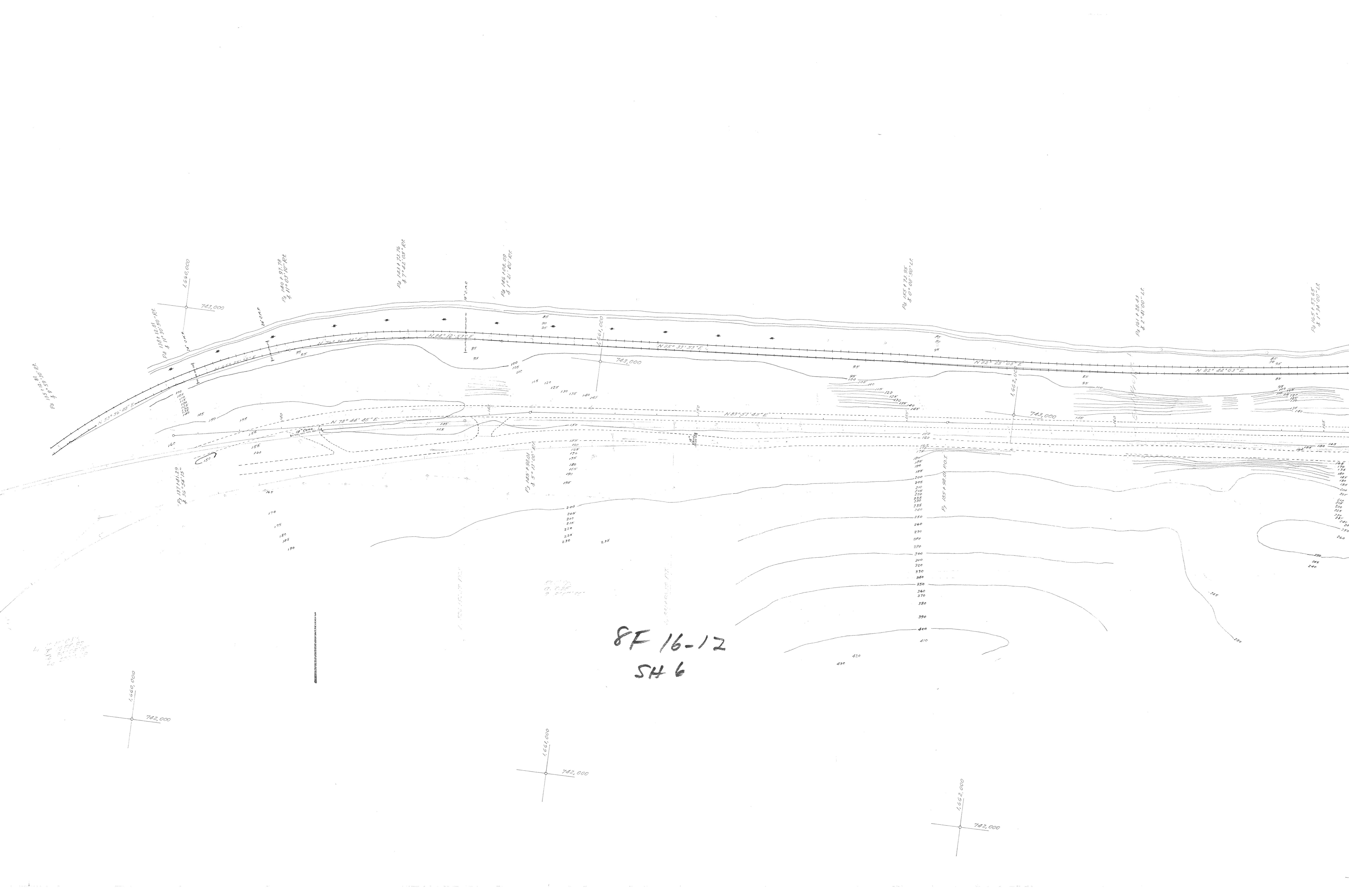


8F16-12  
545

8F16-12

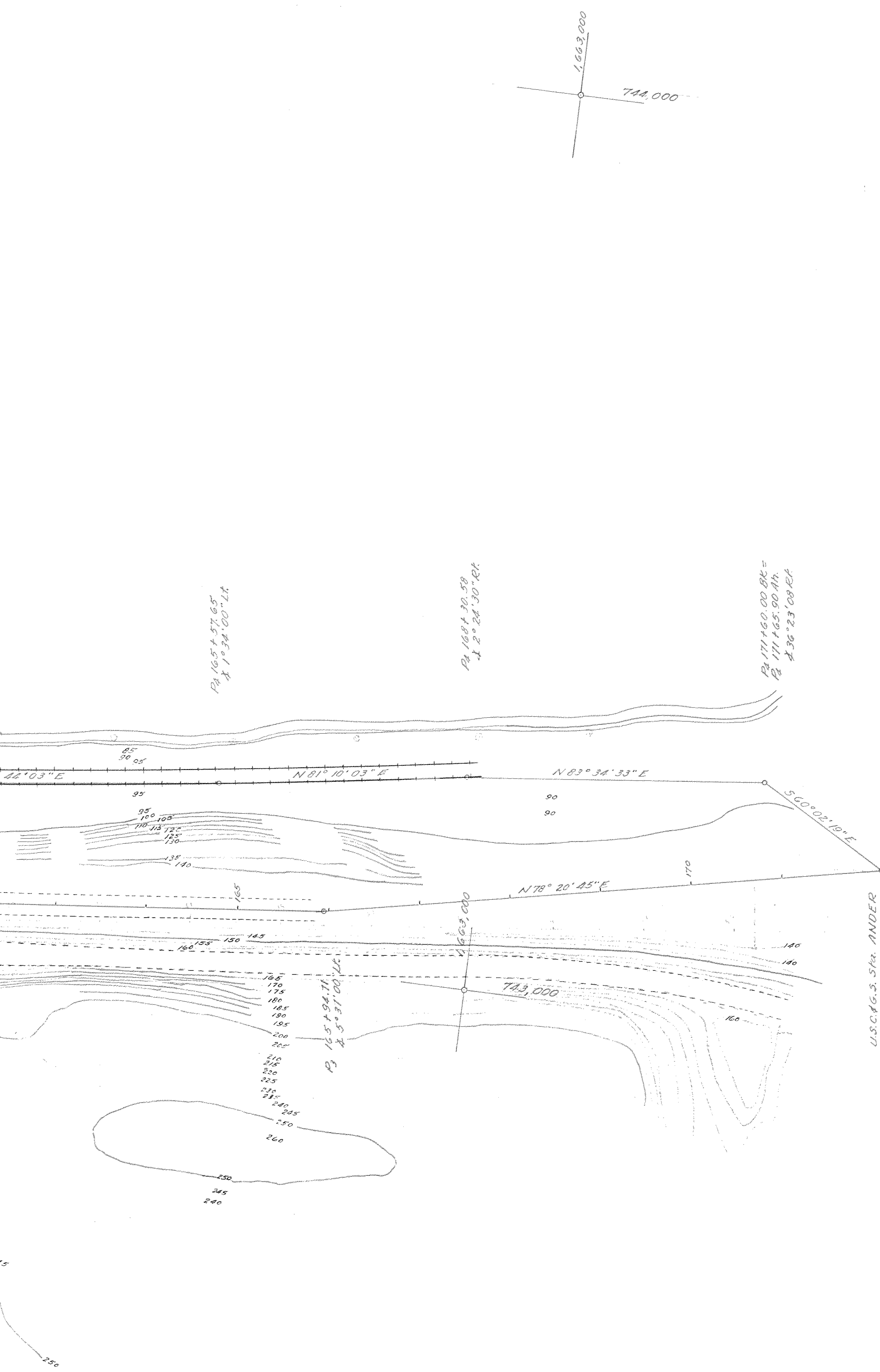
SH5



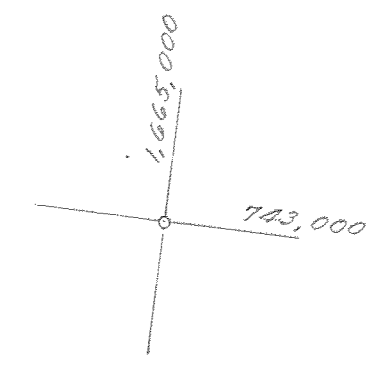
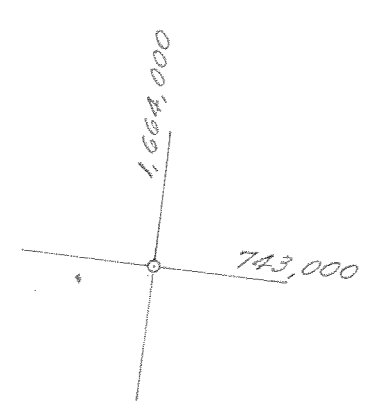
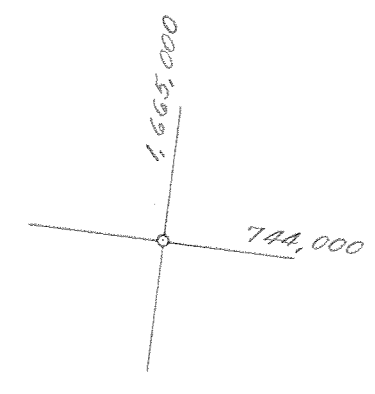
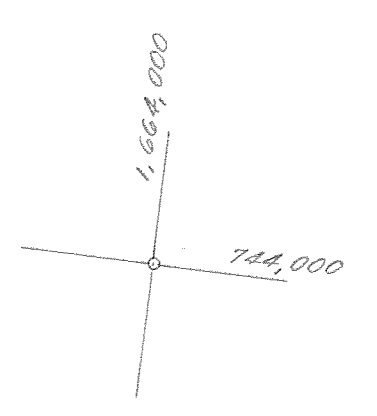
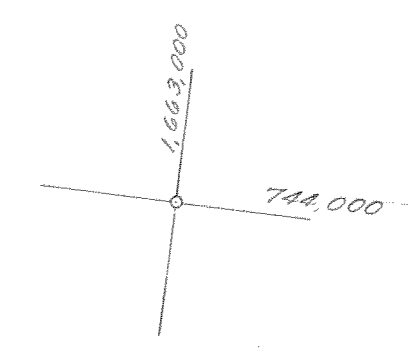


8F 16-12  
SH 6





U.S. GEOG. SURV. ANDER  
 P. 1721160.00 BK. 4  
 P. 171165.00 BK. 4  
 P. 1721160.00 BK. 4  
 P. 171165.00 BK. 4  
 P. 1721160.00 BK. 4  
 P. 171165.00 BK. 4



8F 16-12  
 SH 7

