

Cascade Locks

87 12-5
SH1

Stop Here



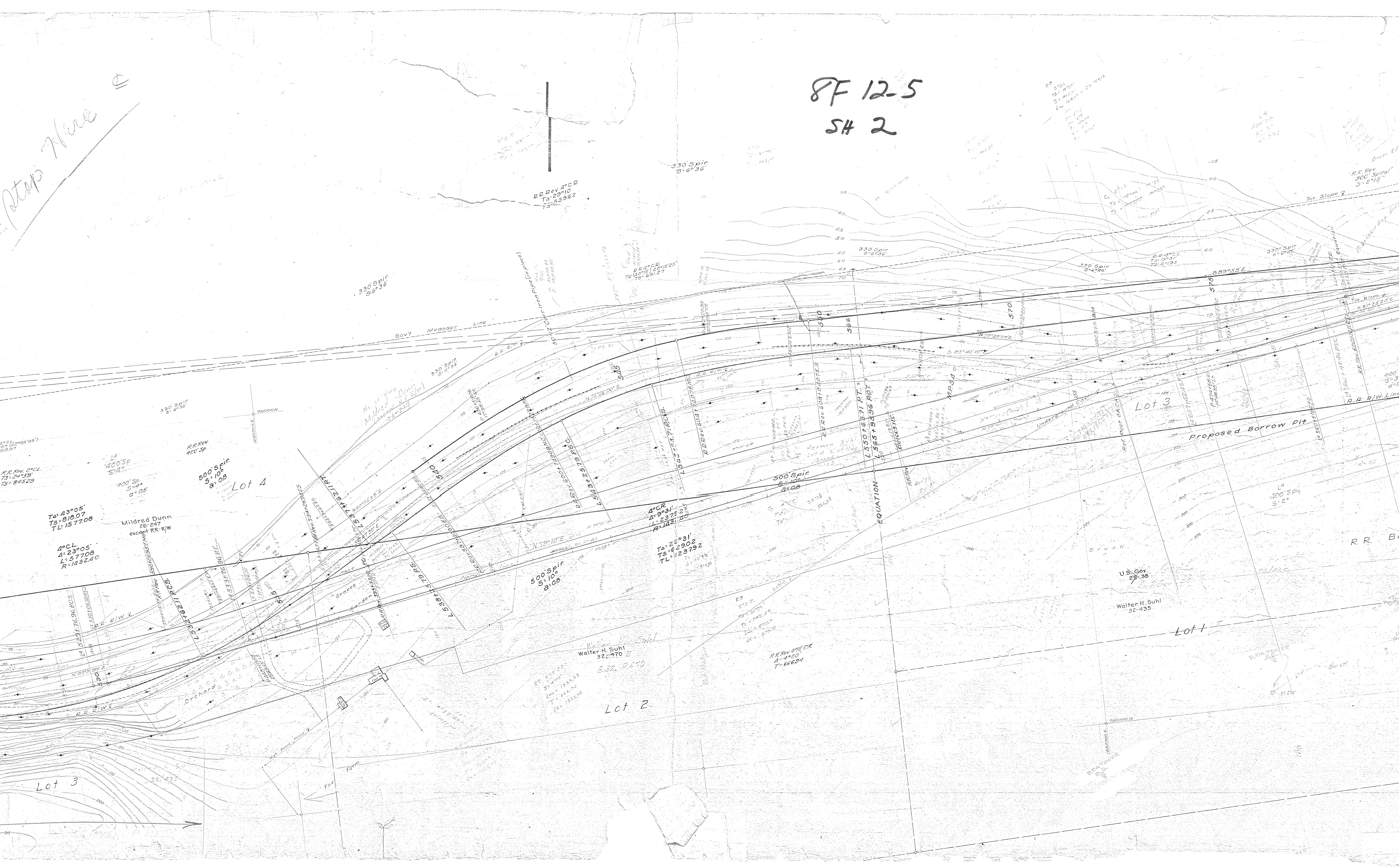
$1^{\circ}C.R.$
 $\Delta: 13^{\circ}44'$
 $L: 1373.33$
 $R: 5723.56$
 $TA: 17^{\circ}14'$
 $TS: 1093.95$
 $TL: 2173.33$

Monroe L. Morgan et ux
32-388
NE 1/4 of NE 1/4
NE 1/4 of NE 1/4
B. 388-2-388

Cascade Locks - Wyeth Section
See Federal Aid Sheet
for this alignment
SLS 6/23/59

Stop Here

8F 12-5
S4 2



TA: 43°05'
TS: 818.07
TL: 1577.08

Mildred Dunn
26-247
except RR-R/W

500' Spir
S: 10°
a: 08

Lot 4

500' Spir
S: 10°
a: 08

TA: 28°31'
TS: 6290.2
TL: 42379.2

Walter H. Suhl
32-435

Lot 2

U.S. Gov.
25-38

Walter H. Suhl
32-435

Lot 1

Lot 3

Lot 3

Proposed Borrow Pit

330' Spir
S: 6°36'

330' Spir
S: 6°36'

RR Rev. 4°00'
TA: 25°10'
TS: 5336.2

EQUATION
L: 550 + 6371 P.T. =
L: 565 + 5356 P.O.T.

500' Spir
S: 10°
a: 08

L: 100' Spir
S: 2°

R.R. B



RR Rev. 2° C.R.
 TA=12'13"
 TS=41168
 Lm=40083

210' Spir
 S=2°06'

RR Rev. 1°30' CR
 A=7°30'
 C=49966
 R=351863

210' Spir
 S=2°06'

RR Rev. 2°30' CR
 A=14°10'
 C=56527
 R=222261

RR Rev. 2°00' CR
 S=5°11'

RR Rev. 2° CL
 TA=22°03'30"
 TS=758.86
 L=102.92

RR Rev. 2° CL
 TA=25°52'
 TS=855.37
 L=107.7

Lot 2
 State of Oregon

ROCK MOUNTAIN

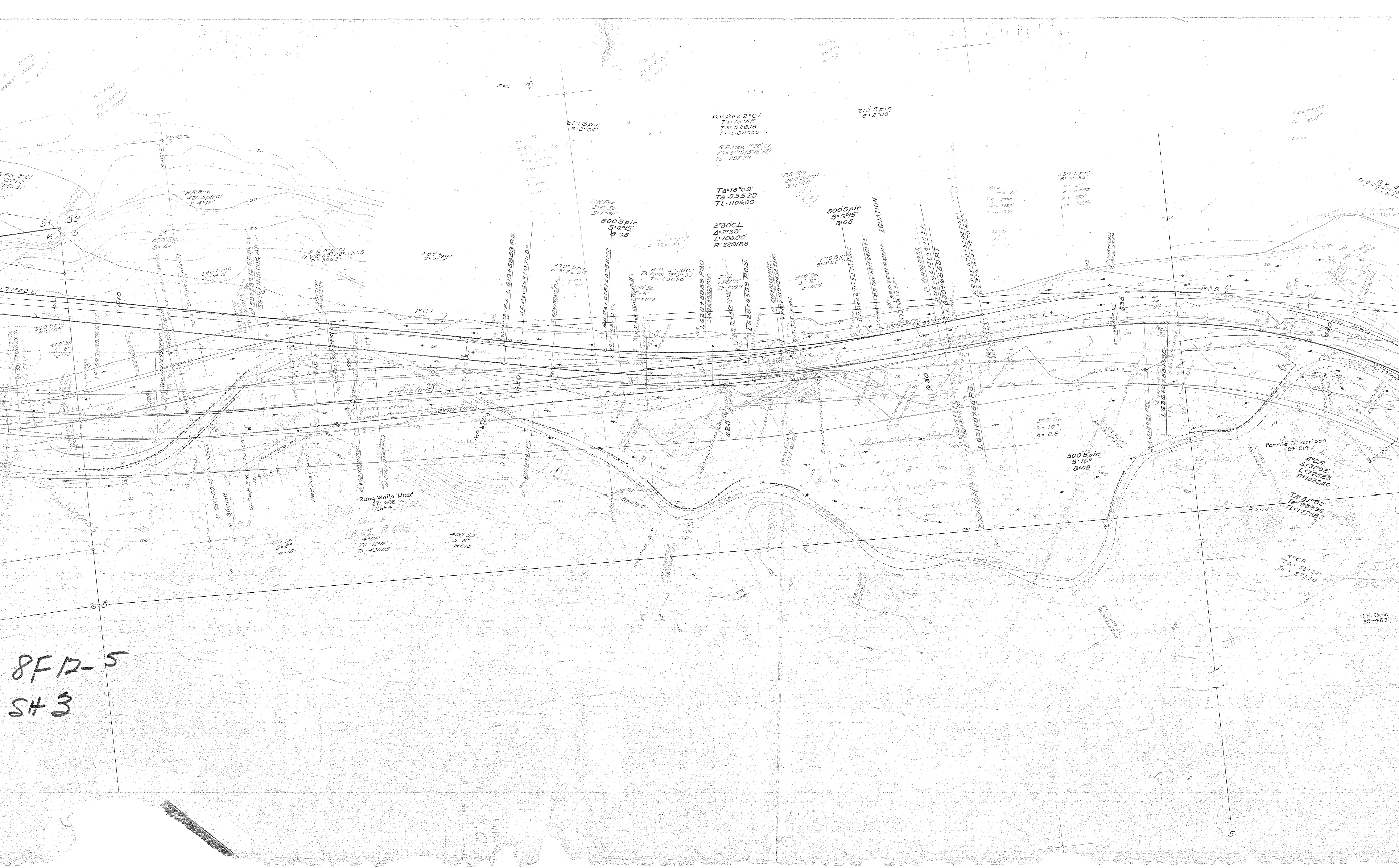
SHELL

Lot 5

RR Borrow Rights

RR Borrow Rights

8F12-5
 SH3



8F12-5
SH3

8F 125
SH 4

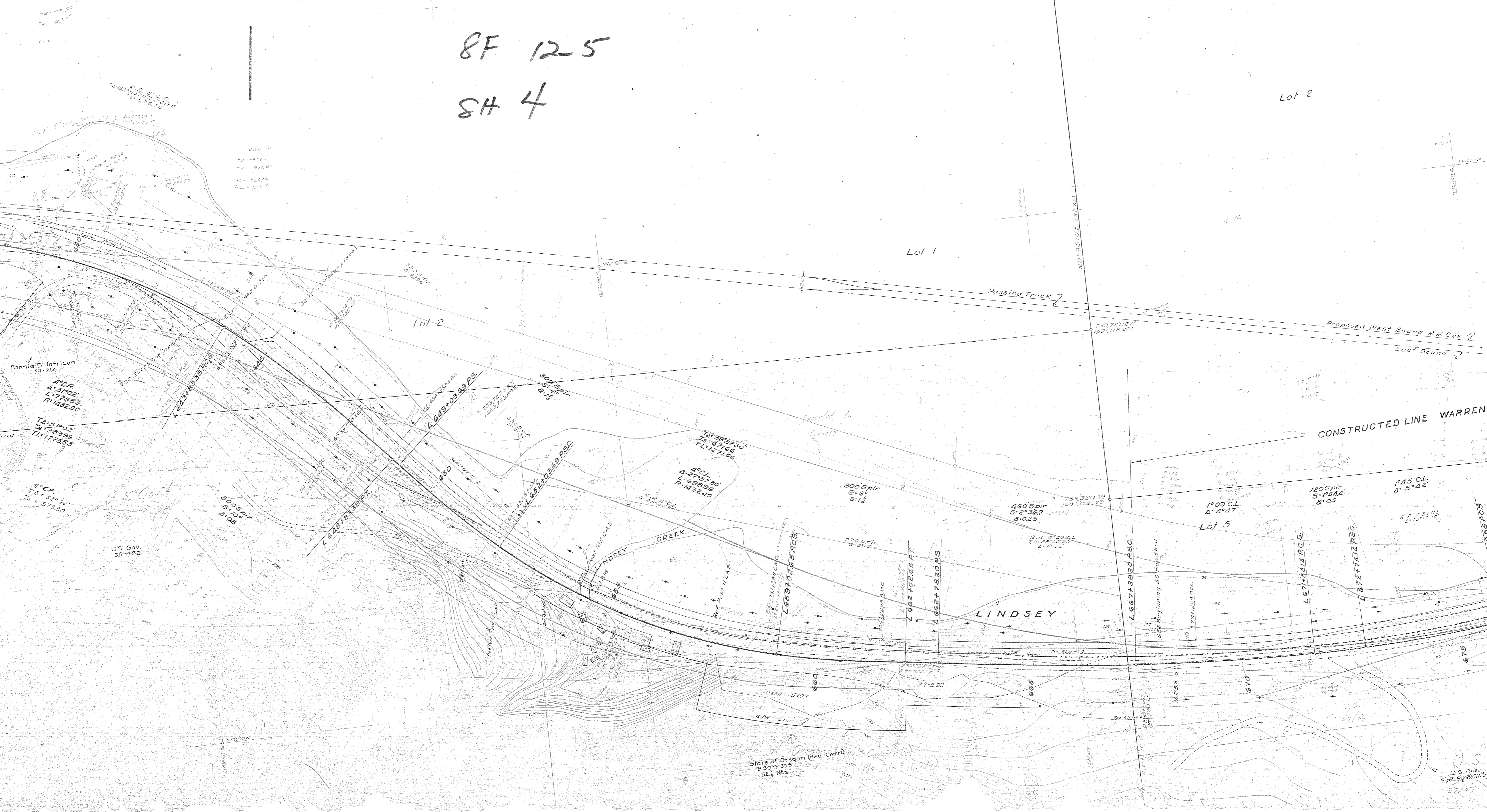
Lot 2

Lot 1

Lot 2

Lot 5

32
33
5
4



D.P. 1st C.P.
72064800N
169112035E

Fannie D. Harrison
24-214
4th C.R.
4:31:02
L: 77583
R: 1432.00

10-51:02
72-33996
TL: 177853

4th C.R.
74-53:22
75-57:30

U.S. Gov.
35-482

State of Oregon (Hwy Comm)
B 30-P 255
SE 1/4 NE 1/4

U.S. Gov.
S 20th of SW 1/4
37/95

8F 12-5

SH 5

Lot 1

Lot 3

Proposed West Bound R.R. Rev. ?
East Bound ?
UNSTRUCTURED LINE WARREN CREEK SECTION 1940

U.S. Gov.
500' S.W. 1/4 of NW 1/4, SW 1/4 of NW 1/4
37/05





8F125
SH6

R.R. Rev. 2° C.R.
TA: 29°10'
TS: 850.58'
Lmc: 1229.00
R.R. Rev. 2° C.R.
TA: 29°10'
TS: 850.58'
Lmc: 1229.00

210° Spir.
S: 2°06'
210° Spir.
S: 2°06'

R.R. Rev. 3°12' C.L.
TA: 34°49'30"
TS: 788.11'
Lmc: 638.28
R.R. Rev. 3°12' C.L.
TA: 34°49'30"
TS: 788.11'
Lmc: 638.28

450° Spir
S: 7°12'

450° Spir
S: 7°12'

500° Spir
S: 10°
a: 0.8

4° C.L.
A: 15°10'
L: 373.17
R: 1432.40

TA: 35°10'
TS: 705.99
TL: 1379.17

2° C.R.
A: 40°14'
L: 2036.67
R: 2864.79

TA: 48°14'
TS: 1498.54
TL: 2836.67

State of Oregon
B. 27 - P. 157
Lot 4

400° Spir
S: 4°
a: 0.5

6x6 Box Culvert
MAP 57

Passing Track

Abandoned

1°45' C.R.

R.R. Rev. 2° C.R.
TA: 30°44'30"
TS: 262.25

R.R. Rev. 2° C.R.
TA: 30°44'30"
TS: 262.25

210° Spir
S: 2°06'

210° Spir
S: 2°06'

210° Spir
S: 2°06'

500° Spir
S: 10°
a: 0.8

R.R. Rev. 2° C.R.
TA: 29°10'
TS: 850.58'
Lmc: 1229.00

R.R. Rev. 2° C.R.
TA: 29°10'
TS: 850.58'
Lmc: 1229.00

R.R. Rev. 2° C.R.
TA: 29°10'
TS: 850.58'
Lmc: 1229.00

R.R. Rev. 2° C.R.
TA: 29°10'
TS: 850.58'
Lmc: 1229.00

R.R. Rev. 2° C.R.
TA: 29°10'
TS: 850.58'
Lmc: 1229.00

R.R. Rev. 2° C.R.
TA: 29°10'
TS: 850.58'
Lmc: 1229.00

200° Spir
S: 2°06'
200° Spir
S: 2°06'
200° Spir
S: 2°06'
200° Spir
S: 2°06'

200° Spir
S: 2°06'
200° Spir
S: 2°06'

513°58'11"

200° Spir
S: 2°06'

210' Spir.
5:2'06"

30' Spir.
5:0'27"

R.R. Rev. P.C.R.
TA: 6°24'25"
TS: 365.70
Lm: 550.63

R.R. P.C.B.
TA: 6°55'45.52"
TS: 391.21

90' Spir.
5:0'27"

150' Spir.
3:5'21"

8F 12-5

8#7

TA: 88°17'35.50"
TS: 322.30

Gordon G. Brown et ux
Ray T. Vasari (undiv. int)
B-21, P-34, & B-36

R.R. P.C.L.
TA: 0°02'17.01"
TS: 68.9

TA: 24°30'
TS: 562.34
TL: 1112.50

Q.P.L.
Δ: 4°36'
L: 112.50
R: 1432.40

500' Spir.
5:10"
a: 0.8



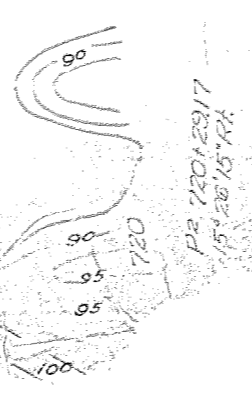
8F 12-5

SH 8



F 12-5

48



7-15-68
7-34-25 LI