

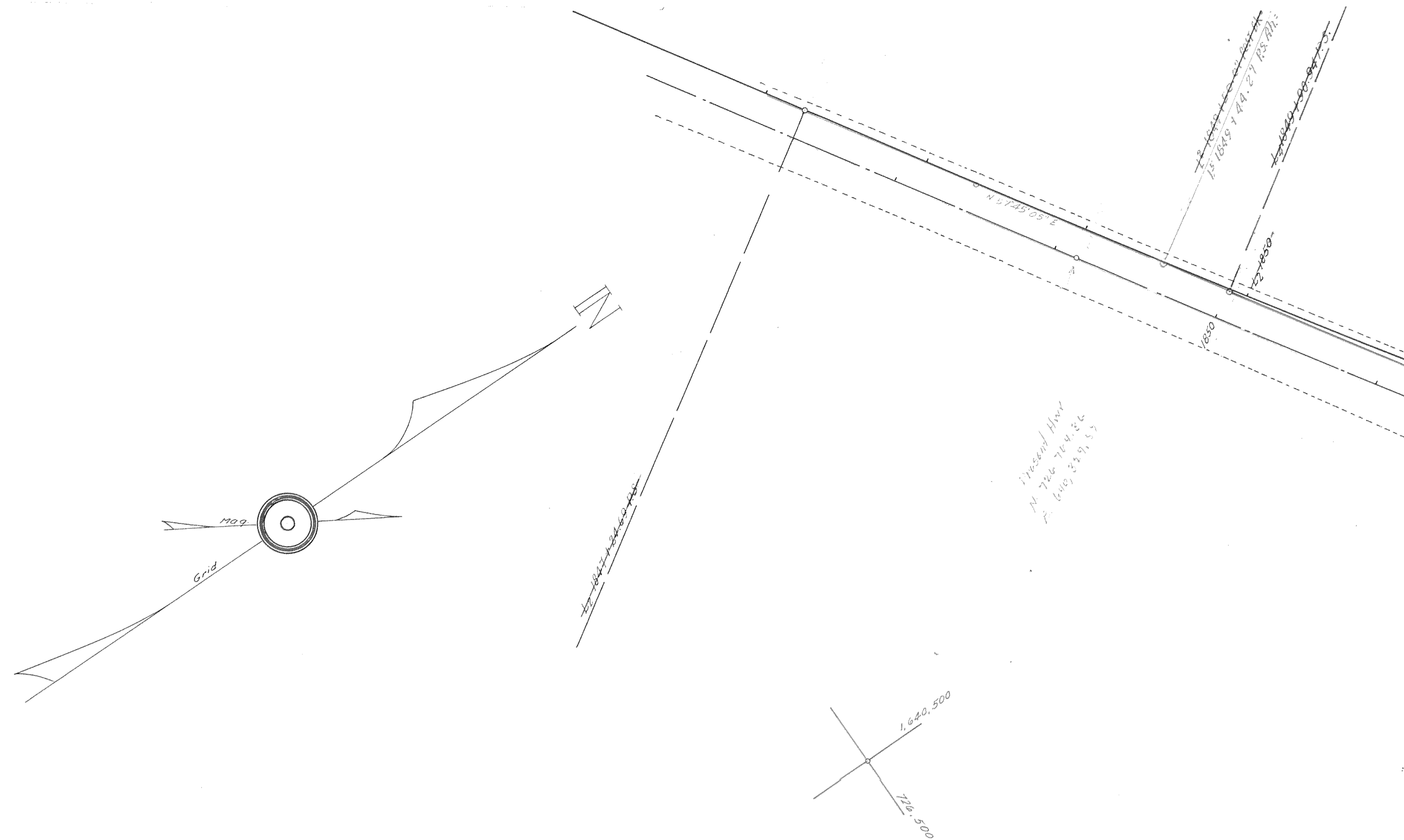
OREGON STATE HIGHWAY DEPARTMENT
LOCATION DETAIL MAP
WEST CASCADE LOCKS JUNCTION
COLUMBIA RIVER HIGHWAY
HOOD RIVER COUNTY Sept. 1957
E.S. Hunter, Res. Engr.

OREGON COORDINATE SYSTEM N ZONE
Scale 1" = 50'

Note* Grid Bearings & Ties From U.S.C. & G.S. Triangulation Sta. "6005"
Lambert Grid unadjusted

Revised As Constructed Dec. 1962

8F 7-20
SH.1



"L 5"
440' Sp.
S 2° 25.2'
R 0.25

LA 1915-01
7A 2754.19"
7B 441.48"
7C 436.42"

Present Line 1927
A 726.94873
F 403.621163

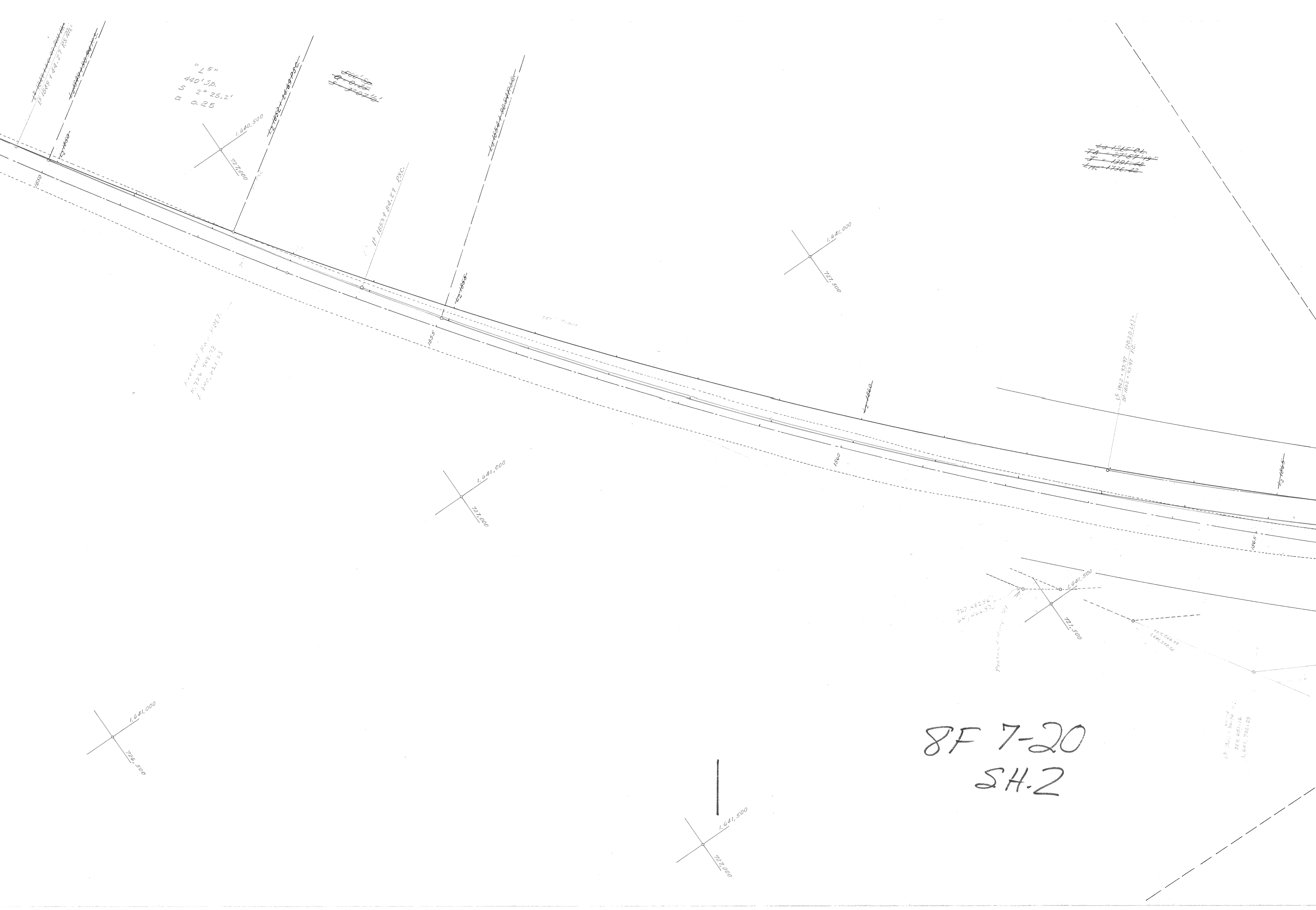
L 1862 - 8397 (08.20.14) =
88 882 - 9397 AC

727.48240
64,266.973

Present Line 01

L 1862 - 8397
727.051112
1,641,792.89

8F 7-20
SH-2



"L5"
1°00' CL
T_a 29°23'13"
T_S 1586.27'

B⁶
2° CL
T_a 17°41'33"
T_S 453.52
T_E 638.52

B⁶
400' Sp.
S = 4°
α = 0.5

500' Sp.
S = 2°25'
α = 3°07'44"

L⁶
145455' Sp.
α = 0.07562476
S = 8°00'

B⁶ 1867+47.99 P.I.
N 722.963.47
E 1641.731.45

L⁵ 1871+08.59 P.O.C. Bk.
L⁶ 1871+08.59 P.C.S. A.A.

L⁶ 1876+15.14 P.O.S. (28.20 RI)
A⁶ 1876+15.14 P.O.T.

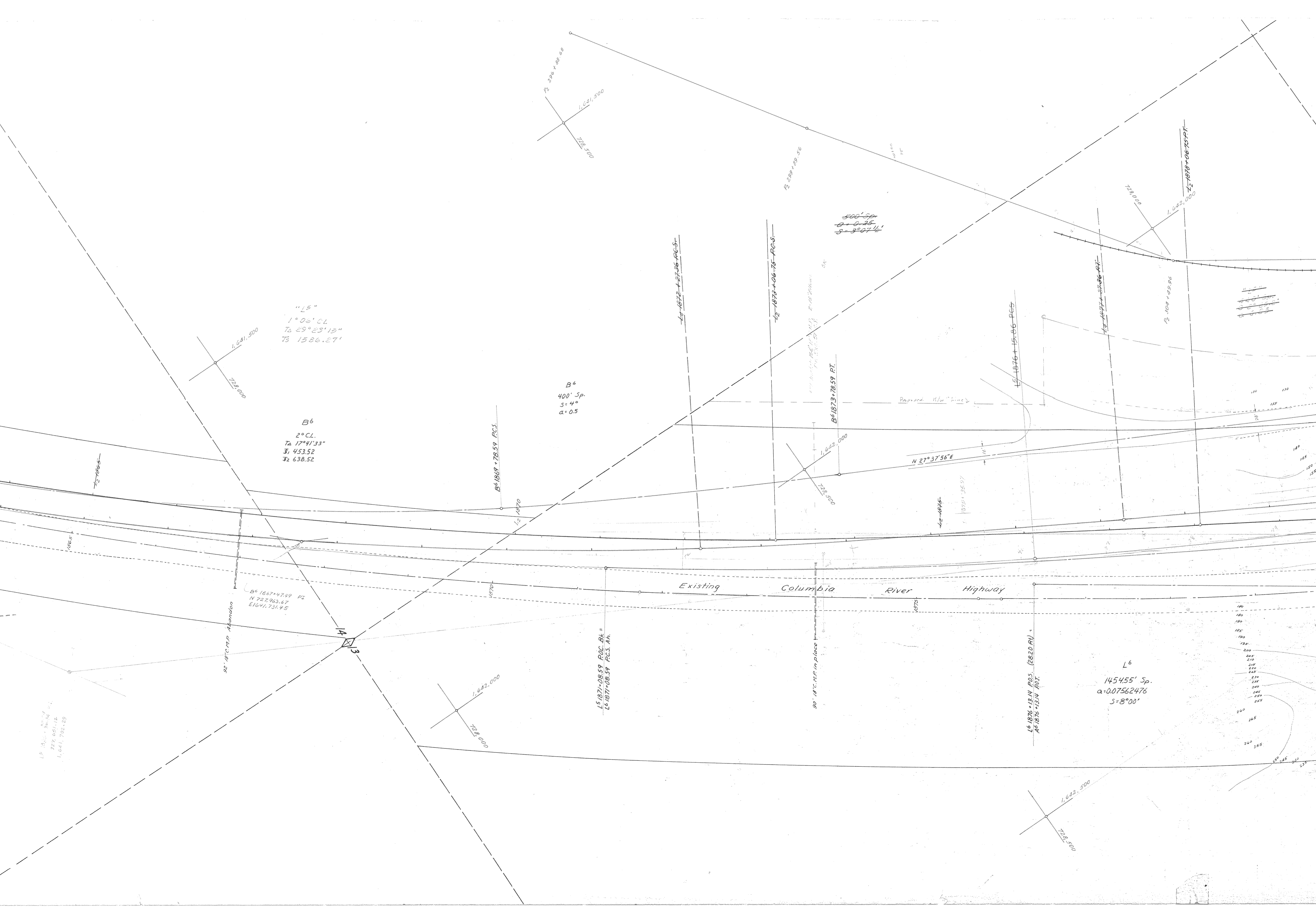
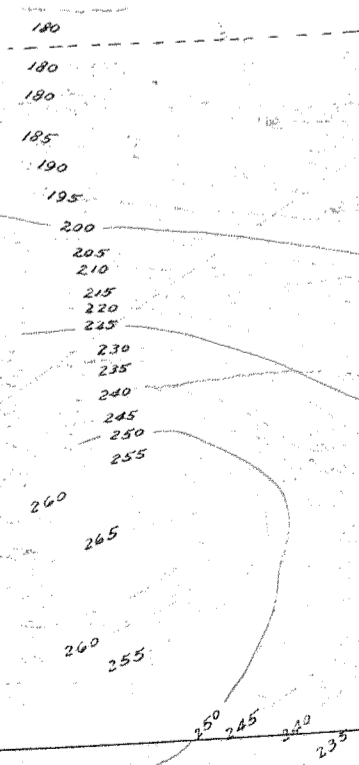
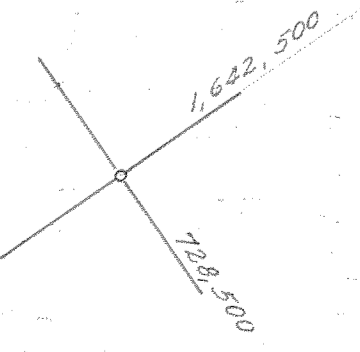
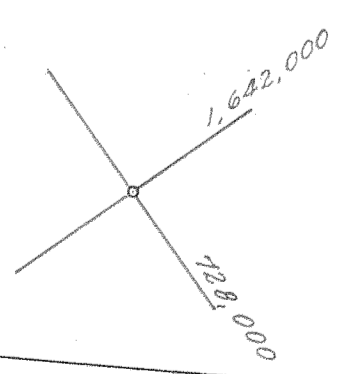
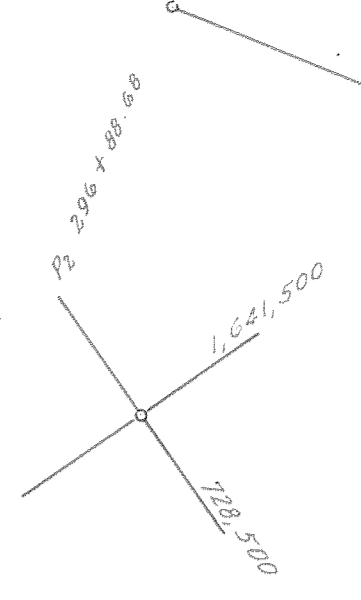
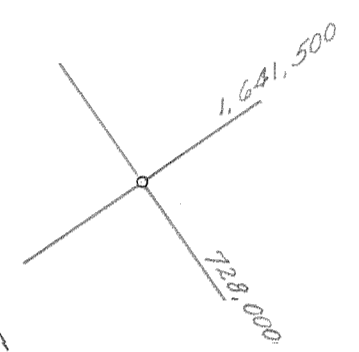
Existing Columbia River Highway

N 27°37'58"E

L⁵ 1860+36.87
T_S 779.051.12
T_E 1,641.702.29

32' 18" M.P. Abandon

30' 18" M.P. in Place



00-02-1878-06-23-71



8F 7-20
SH. 3

400 Sp.
a = 2.5
s = 200'

L⁶ 10 CR
A = 13° 06' 38"
S = 852.53
etc. SH. 65

Topog BE Station to be 44600
38 in 112.4 = .00337130

UNION PACIFIC Rwy. (O.W.R.P. & N. Co.)
Install 18" pipe
Dr. Exc. C.Y.
18" pipe
18" pipe

B⁶
240' Sp.
S = 3° 36'
a = 1.25

B⁶
3° C.L.
TA = 12° 36'
S = 330.97

B⁶
240' Sp.
S = 3° 36'
a = 1.25

A⁶
150' Sp.
S = 9° 00'
a = 8.0

A⁶
12° C.L.
TA = 52° 06' 18"
S = 309.32

L⁶
Offset Sp.
398.93
a = 0.5040771
S = 4° 00'

L⁶ 1885 + 63.14 P.T.
N 724.485.64
E 1642.710.17

L⁶ 1885 + 78.22 P.S.

L⁶ 1885 + 63.14 P.T.

L⁶ 1885 + 78.22 P.S.

L⁶ 1897 + 37.34 P.T.
N 725.568.37
E 1642.513.64

L⁶ 1897 + 37.34 P.T.

L⁶ 1890 + 65.77 P.S.

NOTE:
Sta. 1002 + 65
Basin if Dist

L⁶ 1892 + 03.44 P.T.
N 730.049.07
E 1643.214.35

1075.
a = 0.18
S = 10'



L6 1895-1863 POT.
1895-00 EXT. HWY.
N 15° 01' 56" E
1685.00

NOTE:
Sta. 1002+60 RT. Remove Kubel Catch
Basin if Disturbed During Const.

1771+80
Remove 2" dia. pipe 95' x 10' to CY.
1771+40
Const. Spring Box 4' x 4' x 2'
Dr. Exc. 2' CY. OK
1771+40
18" dia. pipe 55' x 10' to CY.
Dr. Exc. 2' CY.
1771+40
Const. Spring Box 4' x 4' x 2'
Dr. Exc. 2' CY. OK
1771+40
18" dia. pipe 55' x 10' to CY.
Dr. Exc. 2' CY.
1771+40
Const. Spring Box 4' x 4' x 2'
Dr. Exc. 2' CY. OK
1771+40
18" dia. pipe 55' x 10' to CY.
Dr. Exc. 2' CY.

1000+00
12" dia. pipe 2100' x 13" to 181.2'
L6 1892-03.44 PI
N. 730.049.07
E. 1643.014.35

L6
1075.53' Sp.
 $\alpha = 0.18695821$
 $S = 10^\circ 32' 34''$

Topog. 85' Mean to 10' Mean
32 in 1129.4 + .00337130-6 / 4

L6
13° 06' 38"
850.53
511.05

8F 7-20
S.H.K.

