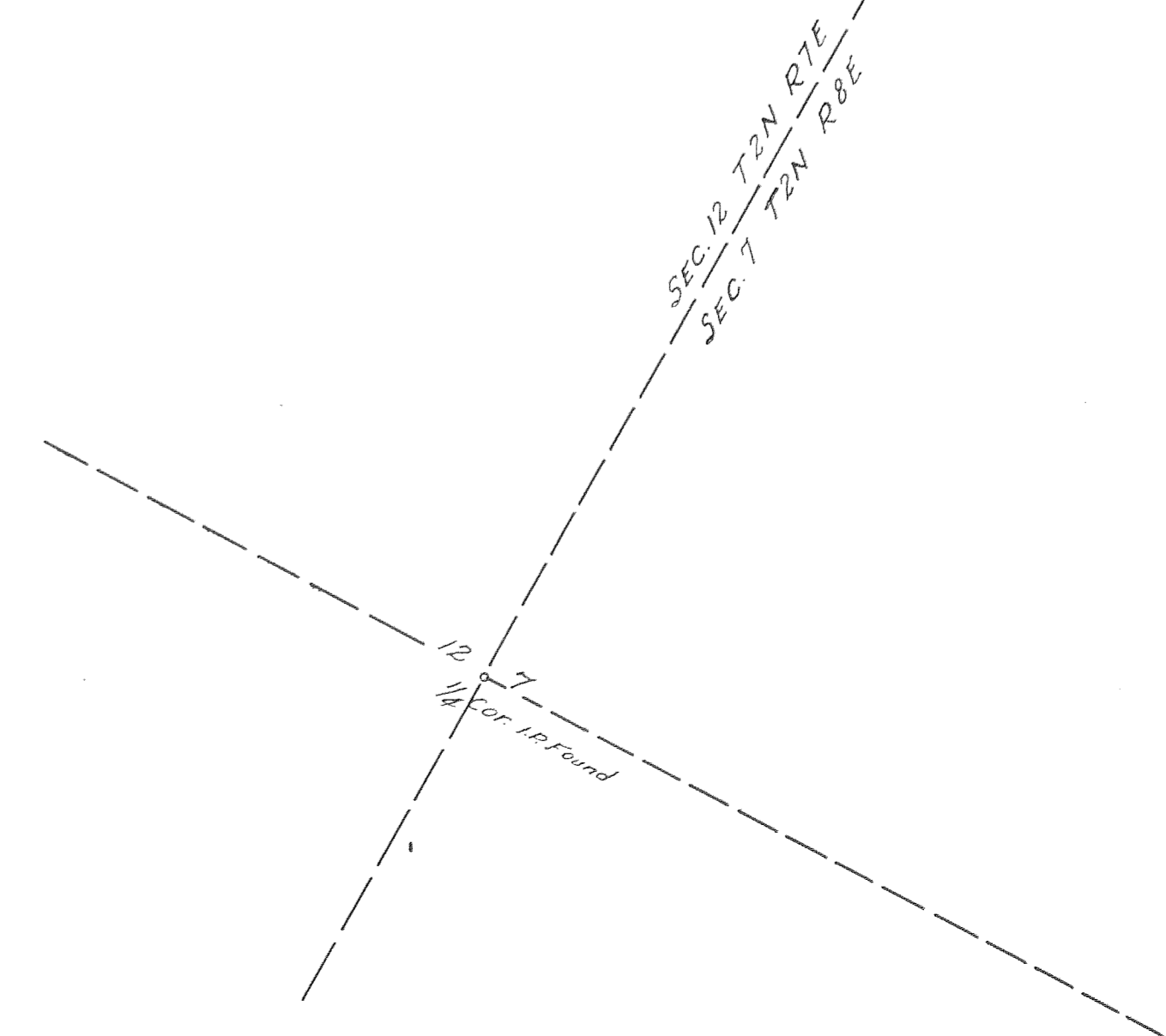
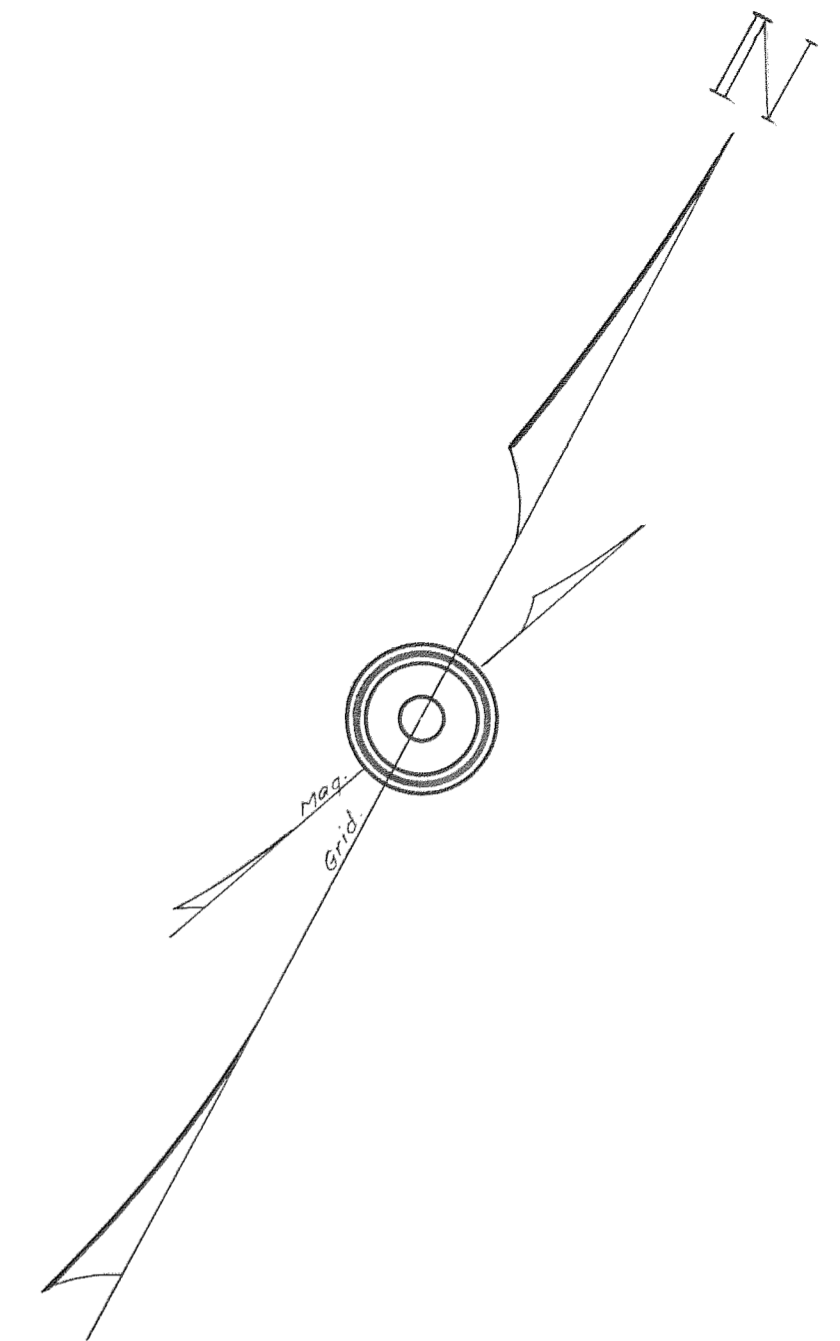
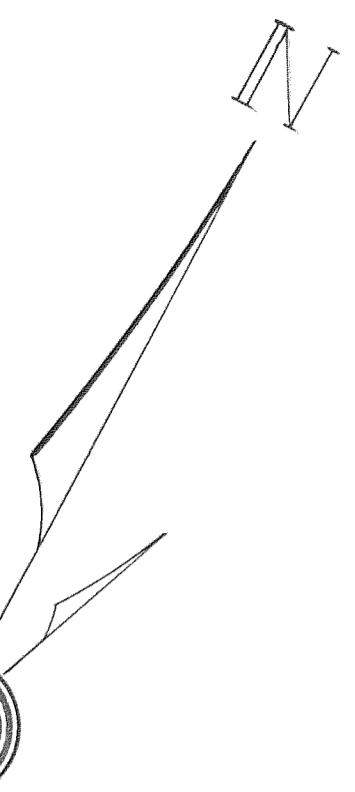


OREGON STATE HIGHWAY DEPARTMENT
LOCATION DETAIL MAP
EAST CASCADE LOCKS JUNCTION
COLUMBIA RIVER HIGHWAY
HOOD RIVER COUNTY
E.S. HUNTER, RES. ENG. SEPT. 1957
OREGON COORDINATE SYSTEM - N. ZONE
SCALE - 1" = 50'

Note * Grid Bearings & Ties From U.S.C. & G.S. Triangulation Sta. "GODS"
Note: - All Bearings shown are Lambert Grid (Unadjusted)
Revised As Constructed Dec. 1962

8F 7-19
SH. 1





1 r Found

C.S.H.D. CIV. WORK
100' RA 120' 00'

20' 5' 8"
200' 5' 0"
a = 6' 0"
S = 12' 00"

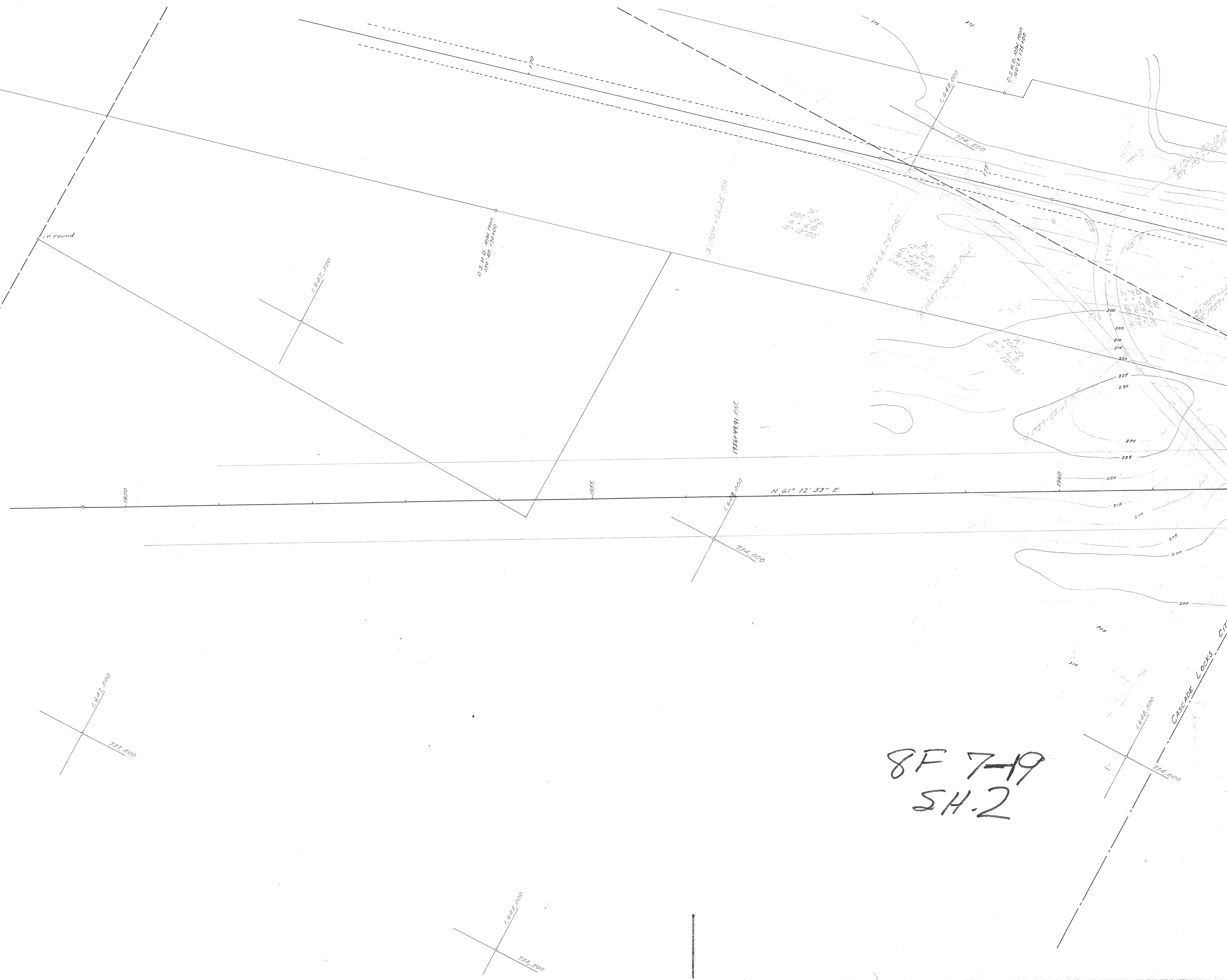
11' 1956' 46.35' PACT
12' C.P. RA
0' 31' 00"
12' 25' 00"
12' 00' 00"
12' 00' 00"

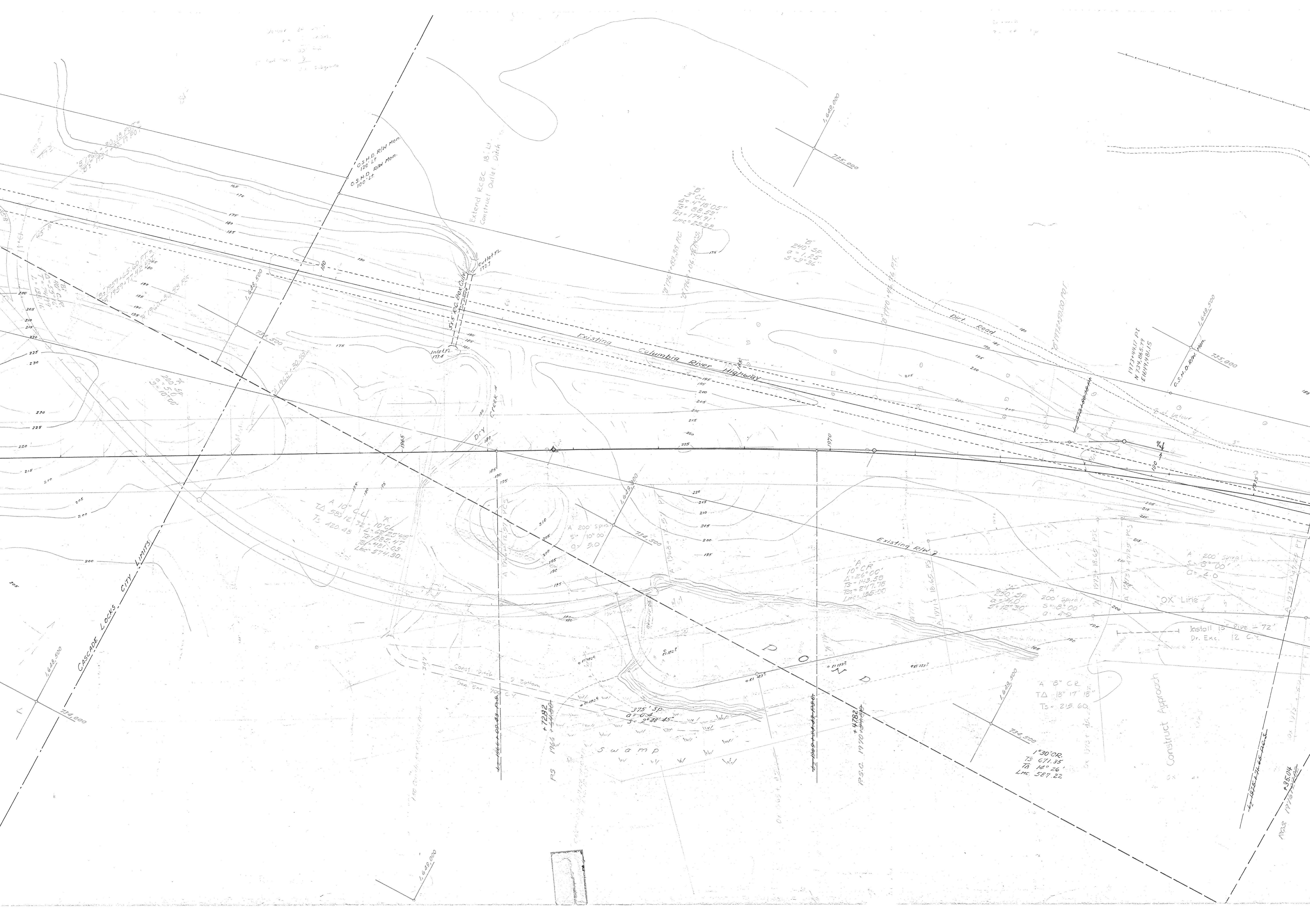
20' 5' 8"
200' 5' 0"
a = 6' 0"
S = 12' 00"

N. 61° 12' 53" E

8F 7-19
SH.2

CASCADE LOCKS CITY





20' 15' 30"
S = 17.50'

O.S.H.D. R/W Men
120' Lt.
O.S.H.D. R/W Men
100' Lt.

Extend RCBC 18' Lt.
Construct Outlet Ditch

8' C.I.
Δ = 4° 18' 05"
TS = 58.53'
Tc = 174.91'
Lmc = 23.52'

27176 + 83.35 P.C.
27176 + 06.76 P.T.

16' SP
Δ = 1° 25'
S = 9.36'

CASCADE LOCKS CITY LIMITS

Inlet Fl.
173.4

Dry Creek

Existing Columbia River Highway

Existing R/W

OX Line

Swamp

Construct Approach

Install 10' Pipe - 72'
Dr. Exc. 12 C.Y.

A 10° C.U.
Δ = 58° 12' 32"
TS = 120.48'
Tc = 254.48'
Lmc = 514.30'

A 10° CR
Δ = 26° 00'
TS = 143.58'
Tc = 247.78'
Lmc = 135.00'

A 200' Spiral
S = 8° 00'
C = 2.0'

A 200' Spiral
S = 8° 00'
C = 2.0'

A 8° CR
Δ = 18° 17' 18"
TS = 215.60'

A 30° CR
TS = 611.35'
Tc = 14° 26'
Lmc = 587.22'

P.S.C. 1970
+ 7292
1788

P.S.C. 1970
+ 4782
1970

P.S.C. 1970
+ 3504
1970



Trailer
 18" Install 18" Pipe
 Dr. Exc. 196

C.S.M.D. R/W Man.
 34" TP

A = 200' Spiral
 S = 8" 00'
 C = 2.0

Install 18" Pipe = 72"
 Dr. Exc. 12 C.Y.

17.00
 11.11
 126.46
 126.46
 375' 50"
 G = 0.1
 S = 2" 08' 45"

Dr. Exc. 18" Pipe = 516"
 Dr. Exc. 2 C.Y.

1273.37
 110.04
 1176.33
 +32.28

8F 7-19
 SH-3

