

ENCROACHMENT ON U.P.R.R. CO. CASCADE LOCKS BY-PASS (part 1 of 2) COLUMBIA RIVER HIGHWAY Hood River County

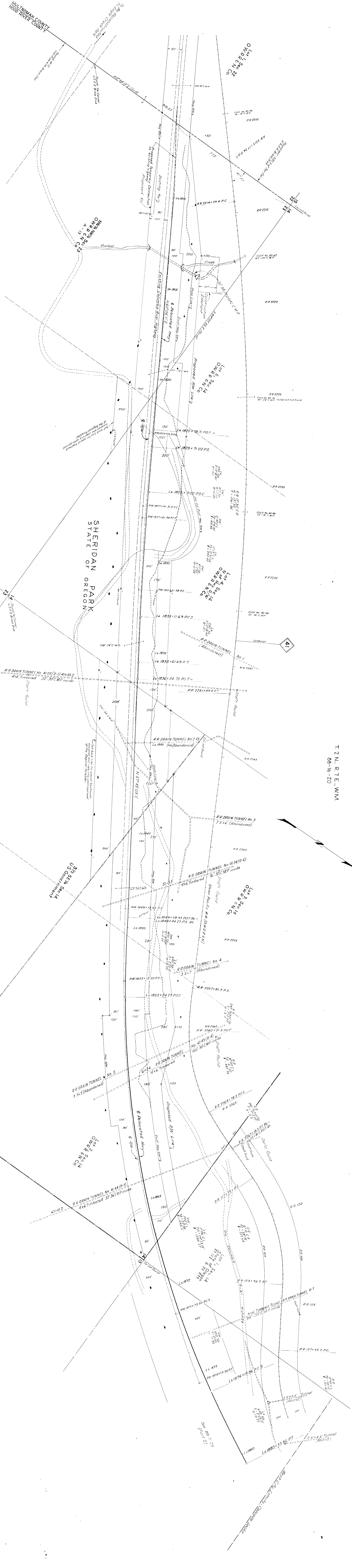
Scale 1"=100'
FEB 1950
REVISED APR 1950

DWG NO 88-16-20
FILE NO 23473

See P.W. Map No. 88-16-15
See P.W. Map No. 88-16-21
See 88-16-21 for X-Sections

OREGON STATE HIGHWAY DEPARTMENT
Located Line

MULTNOMAH COUNTY
HOOD RIVER COUNTY



SHERIDAN PARK
STATE OF OREGON

T. 2 N., R. 7 E., W. 1 M.
88-16-20