

OREGON STATE HIGHWAY DEPARTMENT

Constructed Line

CASCADE LOCKS - HOOD RIVER SECTION

COLUMBIA RIVER HIGHWAY

HOOD RIVER COUNTY

Scale: 1 inch = 400 feet

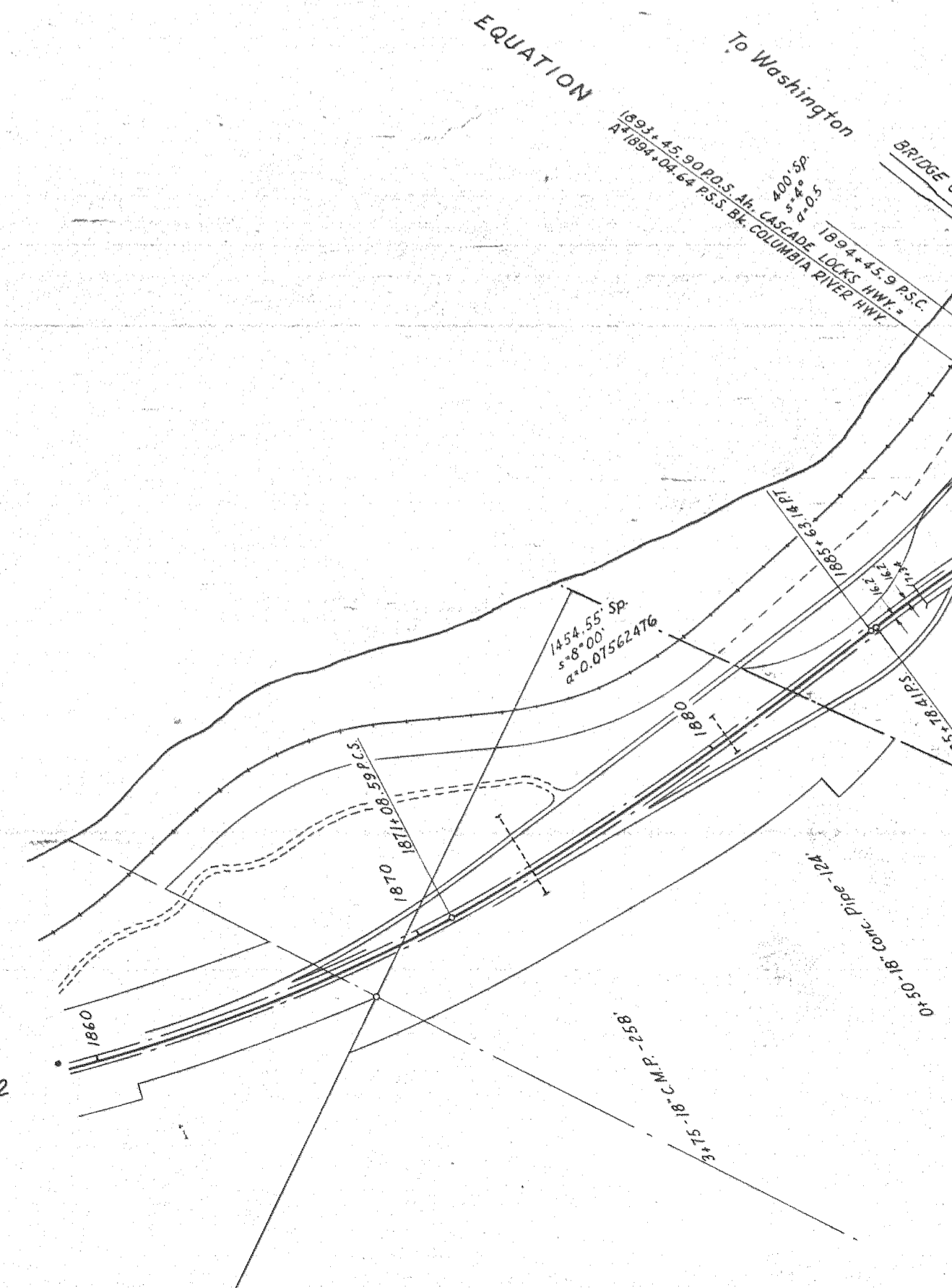
Traced by L.K.

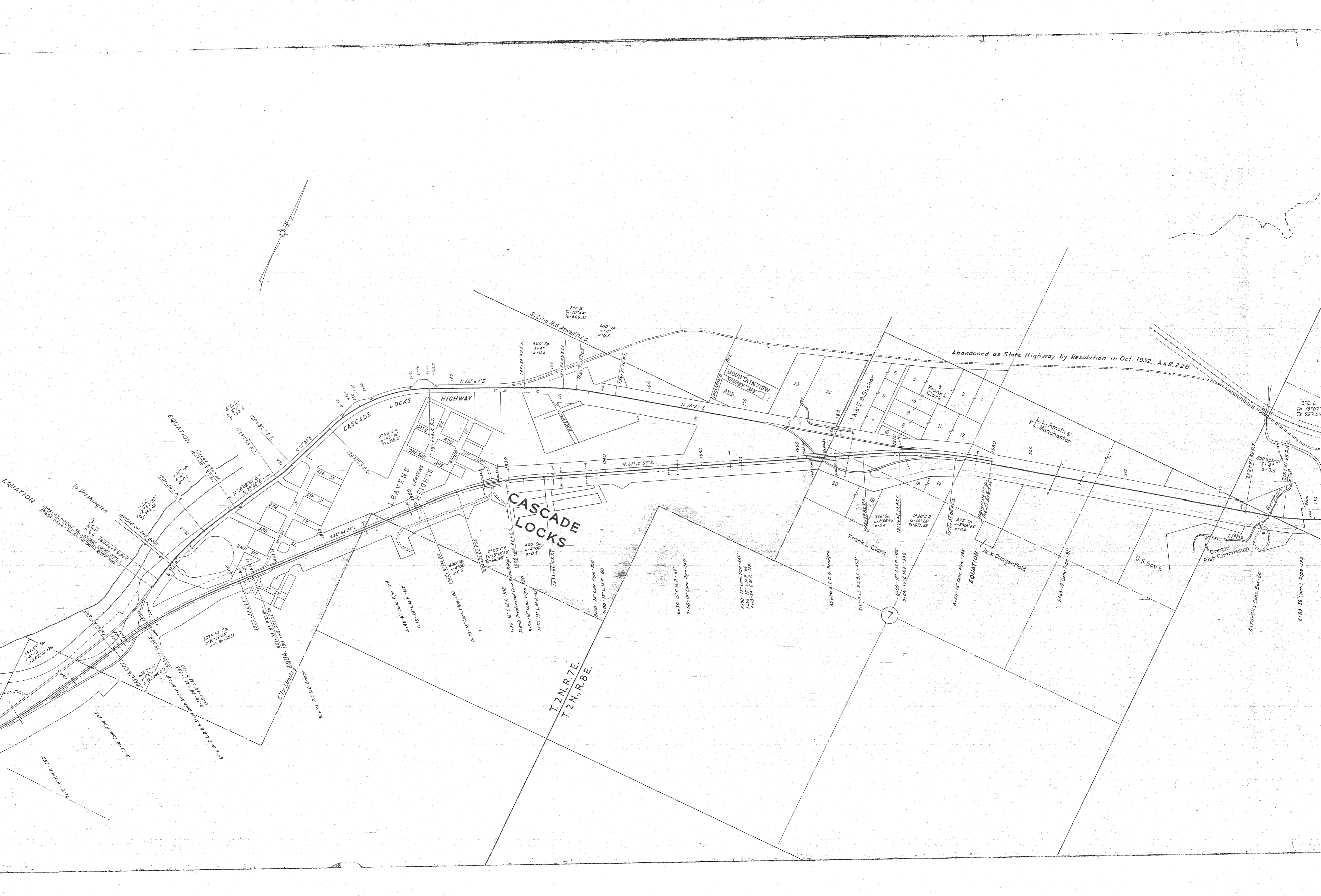
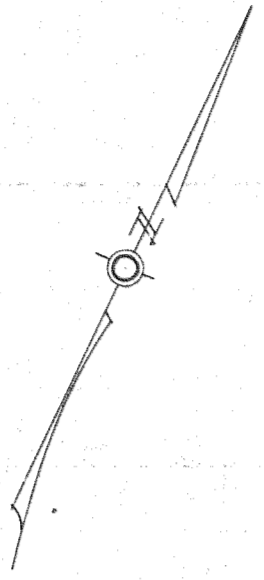
December, 1954

Rev. April, 1965

DRG. NO. 7B-30-1

CASCADE LOCKS HIGHWAY





S. Line R.G. Atwell D.L.C.
2° C.R.
Ta=10°44'
Ts=469.31

Abandoned as State Highway by Resolution in Oct. 1952. A.R. 228.

MOUNTAINVIEW
SARISSET AVE
ADD.

L.L. Amoth &
F.L. Manchester

CASCADE
LOCKS

LEAVENS
HEIGHTS

Frank L. Clark

Little
Oregon
Fish Commission

U.S. Gov't.

T. 2 N., R. 7 E.
T. 2 N., R. 8 E.

7

To Washington

EQUATION

BRIDGE OF THE GODS

1073.53 Sp
a=0.00
a=0.00

1073.53 Sp
a=0.00
a=0.00

1073.53 Sp
a=0.00
a=0.00

1073.53 Sp
a=0.00
a=0.00

1073.53 Sp
a=0.00
a=0.00

1073.53 Sp
a=0.00
a=0.00

1073.53 Sp
a=0.00
a=0.00

1073.53 Sp
a=0.00
a=0.00

1073.53 Sp
a=0.00
a=0.00

1073.53 Sp
a=0.00
a=0.00

City Limits

City Limits

City Limits

City Limits

City Limits

City Limits

4-46-18" Conc. Pipe - 124'

5-18-24" C.M.P. - 182'

6-23-18" Conc. Pipe - 120'

7-45-15" C.M.P. - 108'

30 wide Prestressed Conc. Beam Bridge

400' Sp
a=4'00"
a=0.5

6-100-24" Conc. Pipe - 208'

6-50-15" C.M.P. - 64'

7-50-18" Conc. Pipe - 140'

3-100-12" Conc. Pipe - 246'

3-95-15" C.M.P. - 128'

4-10-24" C.M.P. - 128'

30 wide P.C.D. G. Bridges

5-27-5" R.C.C. - 482'

0-100-15" C.M.P. - 92'

0-84-15" C.M.P. - 348'

0-10-18" Conc. Pipe - 104'

5-163-18" Conc. Pipe - 81'

5-150-5 1/2" Conc. Box - 52'

5-163-36" Corr. L. Pipe - 154'

5-163-36" Corr. L. Pipe - 154'

5-163-36" Corr. L. Pipe - 154'

5-163-36" Corr. L. Pipe - 154'

5-163-36" Corr. L. Pipe - 154'

5-163-36" Corr. L. Pipe - 154'

5-163-36" Corr. L. Pipe - 154'

5-163-36" Corr. L. Pipe - 154'

5-163-36" Corr. L. Pipe - 154'

5-163-36" Corr. L. Pipe - 154'

5-163-36" Corr. L. Pipe - 154'

5-163-36" Corr. L. Pipe - 154'

5-163-36" Corr. L. Pipe - 154'

5-163-36" Corr. L. Pipe - 154'

5-163-36" Corr. L. Pipe - 154'

5-163-36" Corr. L. Pipe - 154'

2° C.L.
Ta=18°07'
Ts=657.07

2° C.L.
Ta=18°07'
Ts=657.07

2° C.L.
Ta=18°07'
Ts=657.07

2° C.L.
Ta=18°07'
Ts=657.07

2° C.L.
Ta=18°07'
Ts=657.07

2° C.L.
Ta=18°07'
Ts=657.07

2° C.L.
Ta=18°07'
Ts=657.07

2° C.L.
Ta=18°07'
Ts=657.07

2° C.L.
Ta=18°07'
Ts=657.07

2° C.L.
Ta=18°07'
Ts=657.07

2° C.L.
Ta=18°07'
Ts=657.07

2° C.L.
Ta=18°07'
Ts=657.07

2° C.L.
Ta=18°07'
Ts=657.07

2° C.L.
Ta=18°07'
Ts=657.07

2° C.L.
Ta=18°07'
Ts=657.07

2° C.L.
Ta=18°07'
Ts=657.07

2° C.L.
Ta=18°07'
Ts=657.07

2° C.L.
Ta=18°07'
Ts=657.07

2° C.L.
Ta=18°07'
Ts=657.07

O.H.W. (Prior to construction of Bonneville Dam)

C O L U M B I A
R I V E R

EQUATION

LANG FOREST WAYSIDE
Lot 1
Lot 2
Lot 3
1R-1-85
P-182

Charles Richard Woodward

Walter W. Kendrick

T. 3 N., R. 8 E.
T. 2 N., R. 8 E.

2" C.L.
T₂ 18°07'
T₅ 557.07

2" 30 C.L.
T₁ 10°25'30"
T₂ 209.75

360
440
490
540
590
640
690
740
790
840
890
940
990
1040

UNION PACIFIC CO.

Ben Conlon et al

Port of Cascade Locks

City of Cascade Locks

RANGER STATION

U.S. Gov't

Ben Conlon et al

Oregon
Fish Commission

5150-5x5 Conc. Box 54'

8183-36' Conc. I. Pipe 1984

Reinf. Conc. Bridge 80' Railway

4180-18' Conc. Pipe 102'

5150-36' Conc. Pipe 87'

4179-18' Conc. Pipe 81'

4190-24' Conc. I. Pipe 158'

4185-18' Conc. I. Pipe 97'

4180-18' Conc. Pipe 87'

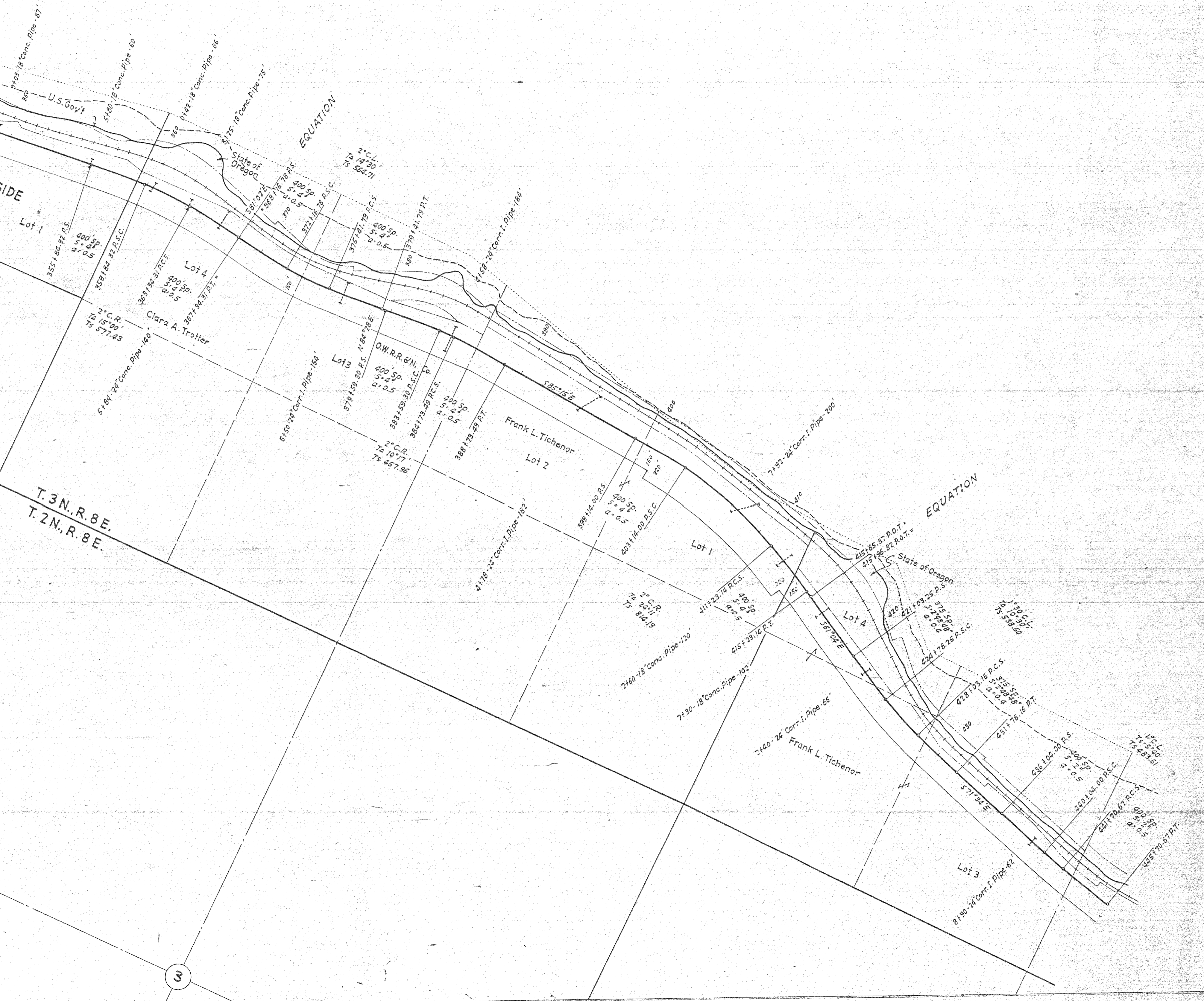
4174-18' Conc. Pipe 80'

5

4

3

V
E
R



T.3N.,R.8E.
T.2N.,R.8E.