

5B-35

See 6B-35-6 for R/W
See 5B-34-21 for R.R. encroachment

R.R. Rev
T₁: 34°28'05"
T₂: 1317.04
T₃: 1033.56

R.R. Rev
240 Spiral
S=3'48"
L=60 MPM

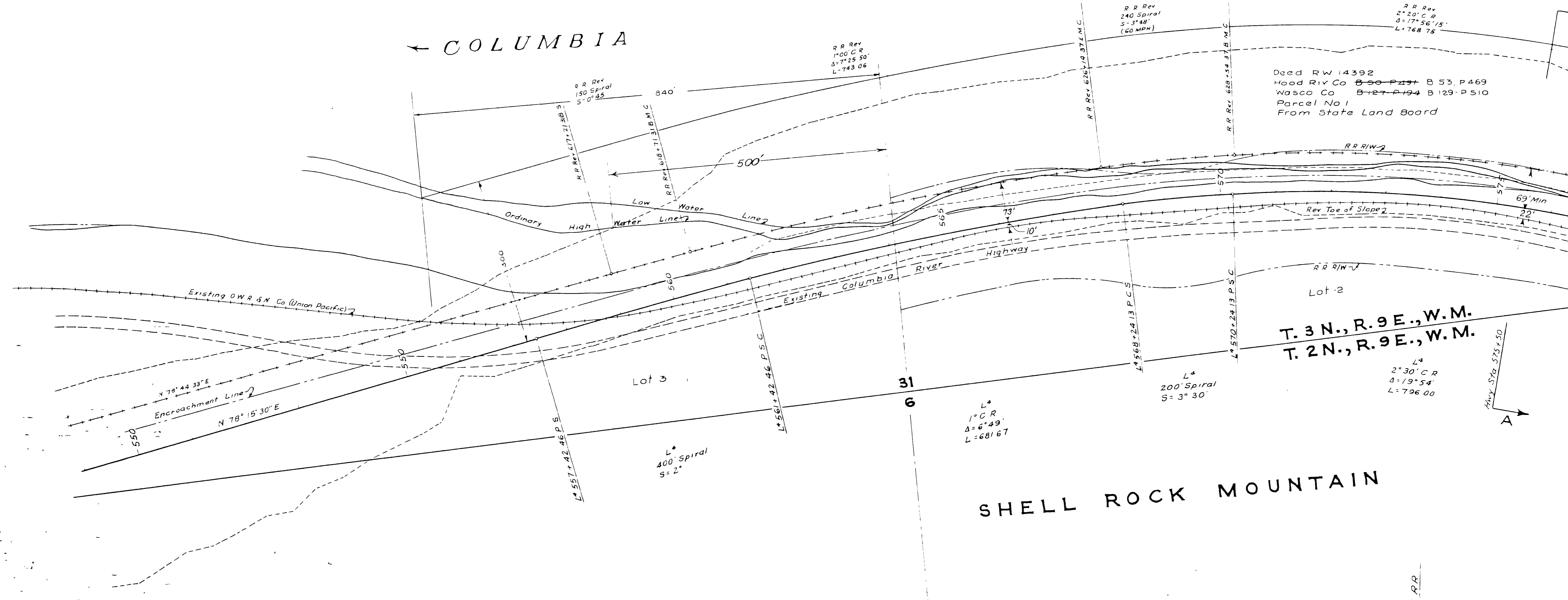
R.R. Rev
2°20' C.R.
S=17°56'15"
L=768.75

R.R. Rev
1°00' C.R.
S=7°25'50"
L=743.06

R.R. Rev
150 Spiral
S=0°45"

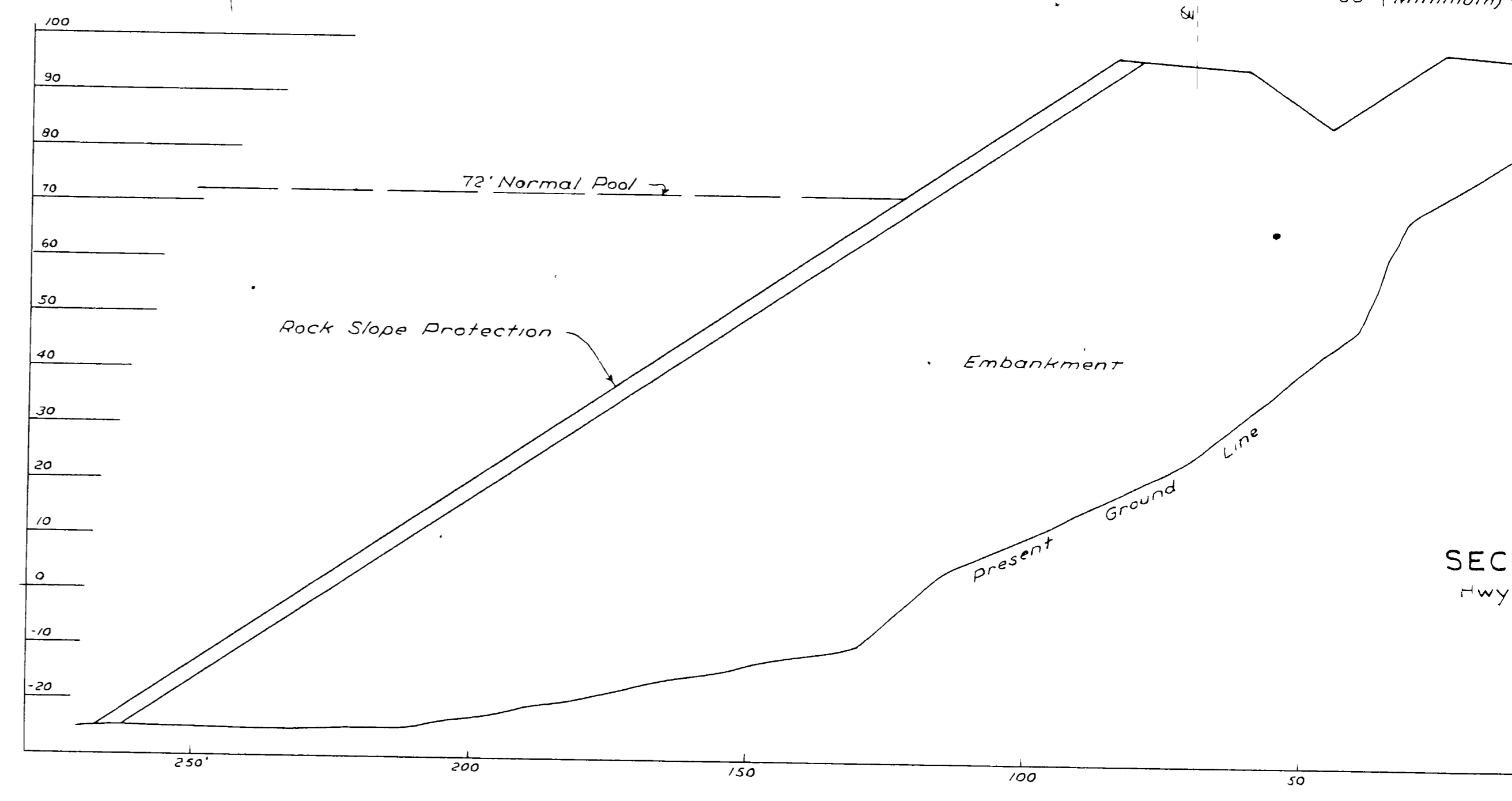
Deed RW 14392
Hood Riv Co B-50 P-237 B-53 P-469
Wasco Co B-127 P-194 B-129 P-510
Parcel No 1
From State Land Board

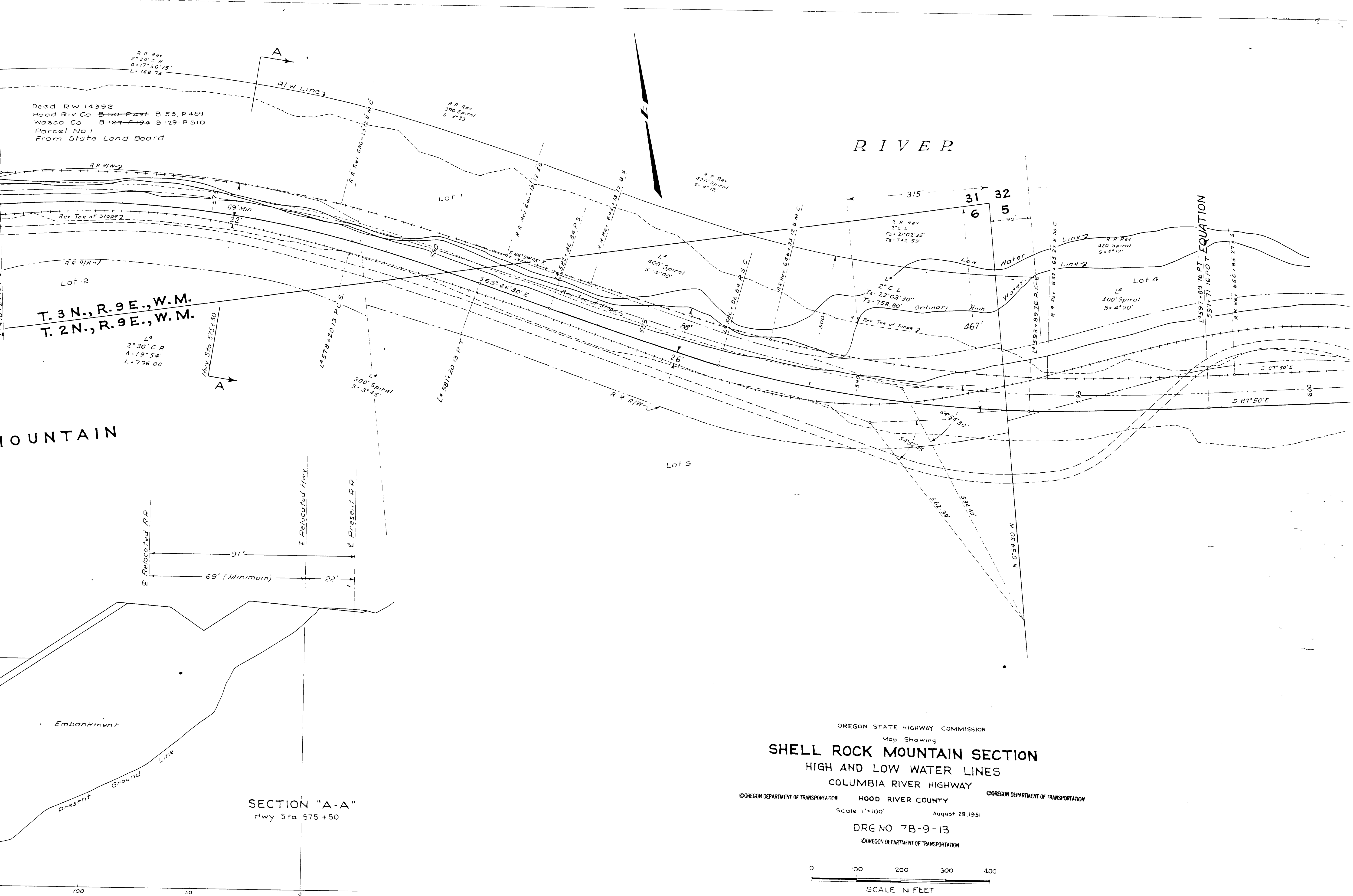
← COLUMBIA



SHELL ROCK MOUNTAIN

T. 3 N., R. 9 E., W.M.
T. 2 N., R. 9 E., W.M.





Deed RW 14392
 Hood Riv Co B-50-P-197 B 53, P 469
 Wasco Co B-27-P-194 B 129, P 510
 Parcel No 1
 From State Land Board

T. 3 N., R. 9 E., W. M.
 T. 2 N., R. 9 E., W. M.

SECTION "A-A"
 Hwy Sta 575 + 50

OREGON STATE HIGHWAY COMMISSION
 Map Showing
SHELL ROCK MOUNTAIN SECTION
 HIGH AND LOW WATER LINES
 COLUMBIA RIVER HIGHWAY
 ©OREGON DEPARTMENT OF TRANSPORTATION HOOD RIVER COUNTY ©OREGON DEPARTMENT OF TRANSPORTATION
 Scale 1"=100' August 28, 1951
 DRG NO 7B-9-13
 ©OREGON DEPARTMENT OF TRANSPORTATION

