

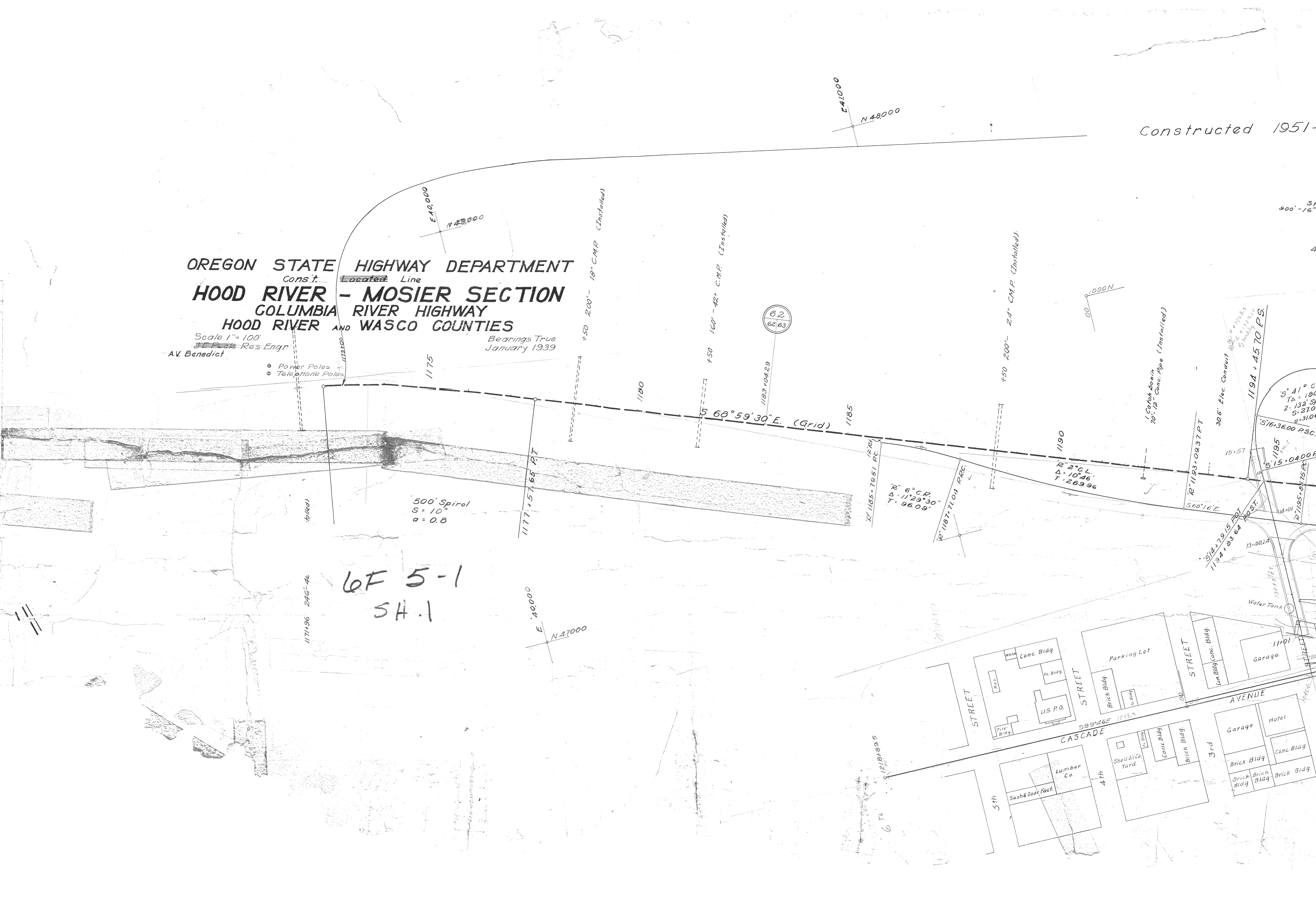
OREGON STATE HIGHWAY DEPARTMENT  
 Const. ~~Proposed~~ Line  
**HOOD RIVER - MOSIER SECTION**  
 COLUMBIA RIVER HIGHWAY  
 HOOD RIVER AND WASCO COUNTIES

Scale 1" = 100'  
 Res Engr  
 A.V. Benedict

Bearings True  
 January 1939

- Power Poles
- Telephone Poles

Constructed 1951-



tructed 1951-1953

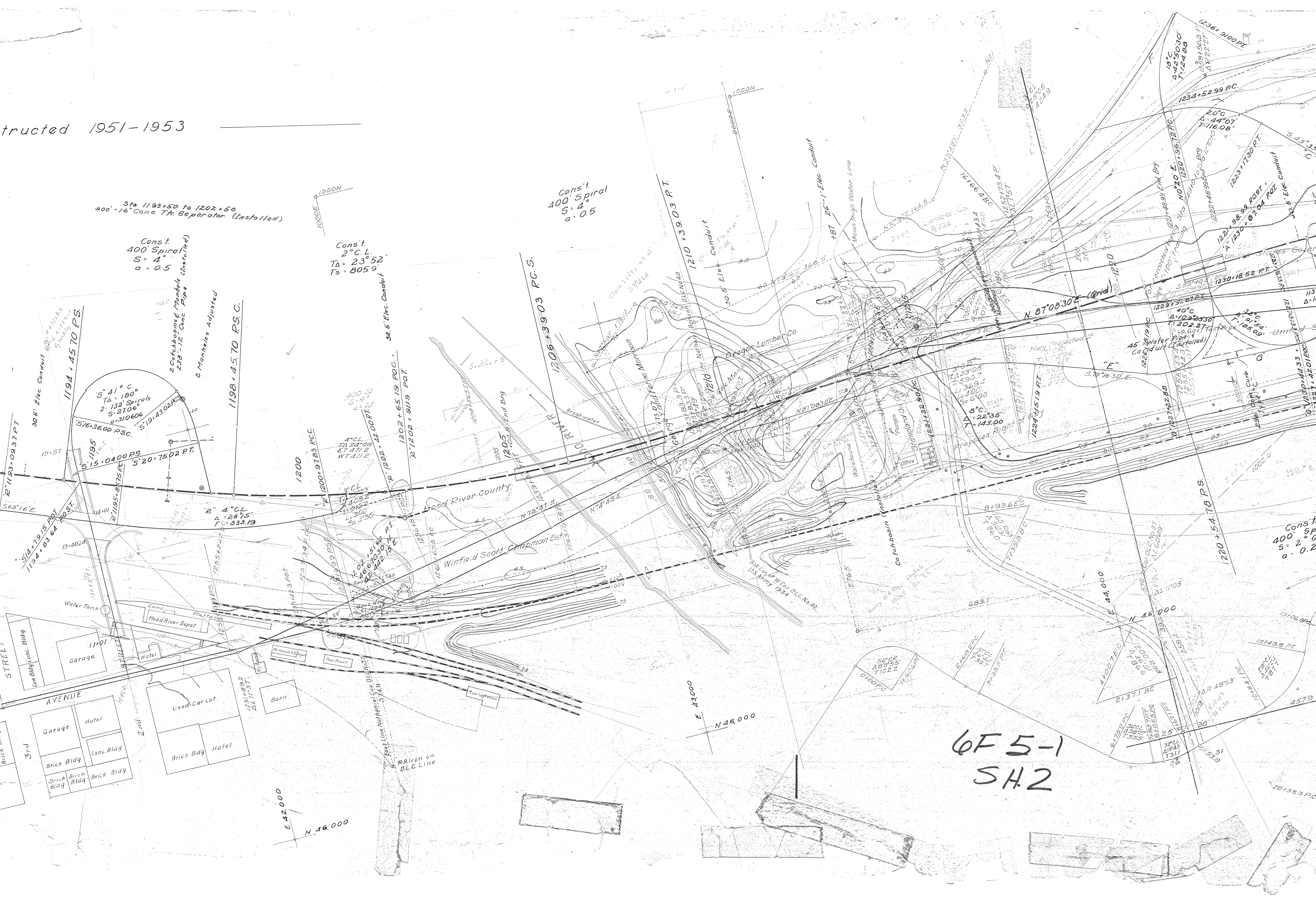
Sta 1193+50 to 1202+50  
900'-16" Conc. Tfr Separator (Unstalled)

Const  
400' Spiral  
S = 4°  
a = 0.5

Const  
2" C.L.  
TA = 23° 52'  
Ts = 805.9

Const  
400' Spiral  
S = 4°  
a = 0.5

34.5' Elec. Conduit



6F5-1  
SH2

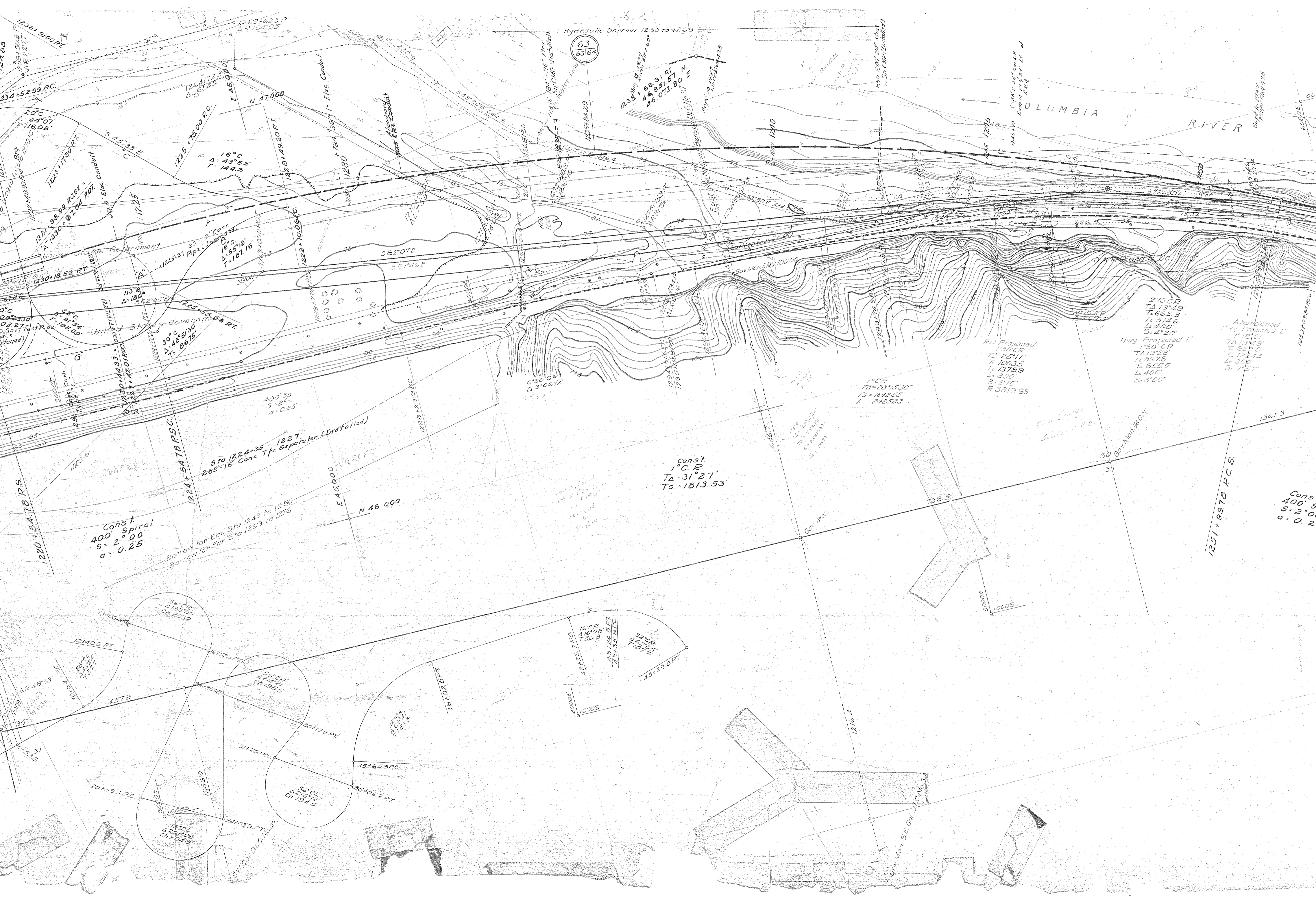
Const  
400' sp  
S = 2.0°  
a = 0.2

E 42,000  
N 46,000

E 43,000  
N 46,000

E 44,000  
N 46,000

201383 PC



Hydraulic Borrow 1250 to 1269

(63)  
63.64

COLUMBIA RIVER

12361.9100 PT  
12361.623 P  
ΔR 104.05'

234+52.99 P.C.  
20°  
44'01"  
1116.06'

1226+7500 P.C.  
N 41.000  
E 45.000  
1228+4930 F.T.  
+784.59'  
1230

1225+1730 P.T.  
1221+98.99 P.C.S.T.  
1230+1852 P.T.  
113 K  
Δ=184'

582°07E  
581°46E  
400' Sp  
S=2°  
a=0.25

1225+1000 P.C.  
1222+1000 P.C.  
1222+54.78 P.S.C.  
Sta 1224+35 - 1227  
265'-16" Conc. Tfc Separator (Installed)

const  
1° C. B.  
TA=31°27'  
Ts=1813.53'

Const  
400' spiral  
S=2°00'  
a=0.25

1220+54.78 P.S.  
1224+54.78 P.S.C.  
Borrow for Em Sta 1243 to 1250  
Borrow for Em Sta 1269 to 1276

5° CR  
TA 193.30  
Ls 203.2

56° CR  
TA 121.21  
Ls 195.5

56° CR  
TA 125.17  
Ls 154.5

16° CR  
TA 146.08  
Ls 150.8

42+23.7 P.C.  
48+24.5 P.T.  
45+29.5 P.T.  
40000  
10005

1° CR  
TA=28°15'30"  
Ts=1642.55  
L=2425.83

RR Projected  
1°30' CR  
TA 25°11'  
Ts 1003.5  
Ls 1378.9  
Ss 300'  
Ss 2°15'

Hwy Projected L2  
1°30' CR  
TA 19°28'  
Ts 897.8  
Ls 855.5  
Ls 400'  
Ss 3°00'

Abandoned  
Hwy Projected L1  
1°18' CR  
TA 19°49'  
Ts 925.0  
Ls 1224.4  
Ls 300'  
Ss 1°57'

55° CR  
TA 121.04  
Ls 204.3

50° CR  
TA 151.53  
Ls 151.5

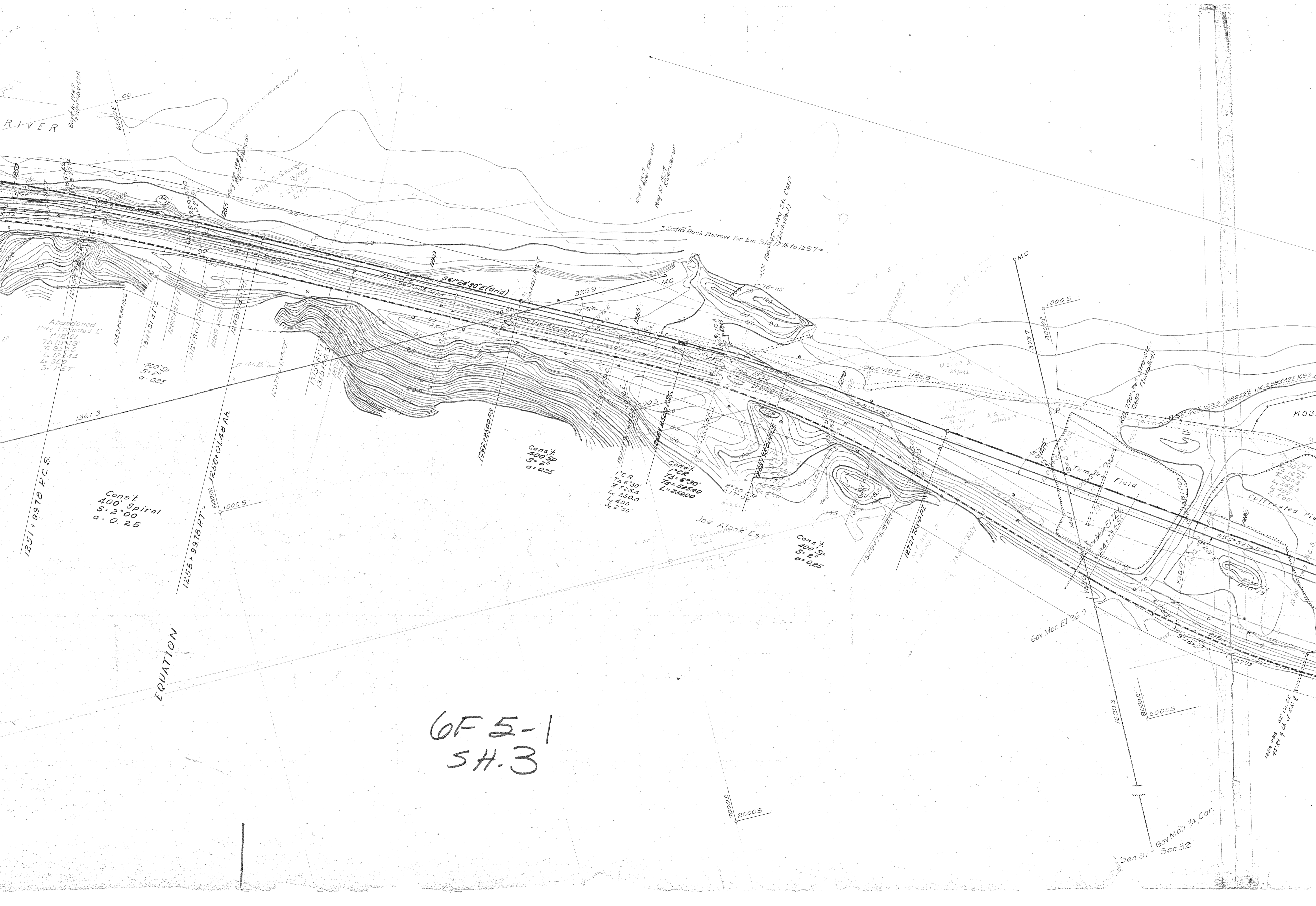
55° CR  
TA 126.17  
Ls 154.5

32° CR  
TA 107.7  
Ls 107.7

50000  
10005

30 Gov. Mon. ELEV. 10000  
Gov. Mon. SE Cor. J.C. 126.3

Const  
400' Sp  
S=2°00'  
a=0.25



RIVER

Sept 10, 1937  
12371.16V 47.5

1251 + 9978 P.C.S.

Const  
400 Sp  
S = 2.00  
a = 0.25

EQUATION

1255 + 9978 P.T. =  
6000E 1256 + 01.48 Ah

OF 5-1  
SH. 3

Const  
400 Sp  
S = 2.00  
a = 0.25

Const  
400 Sp  
S = 2.00  
a = 0.25

Const  
400 Sp  
S = 2.00  
a = 0.25

Joe Aleck Est.

Fred k... Est.

Gov Mon El 36.0

6000E 2000S

Sec 31 Gov Mon 1/4 Cor.  
Sec 32

C. George  
13/505  
0.85  
1/25

May 11, 1937  
12371.16V 47.5

May 11, 1937  
12371.16V 47.5

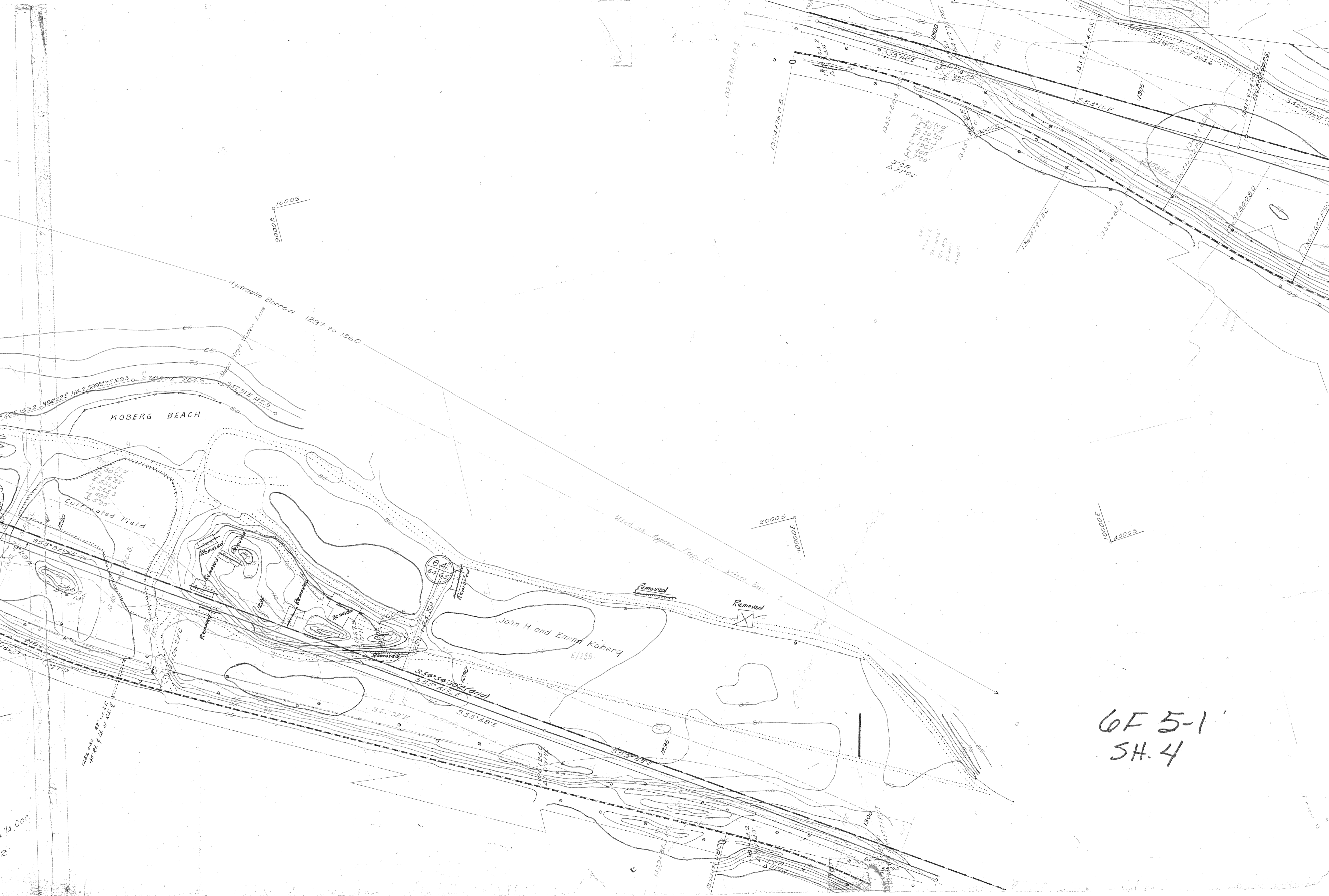
Solid Rock Borrow for Em Sta 1276 to 1297

1000 + 26 King Str  
CMP (Controlled)

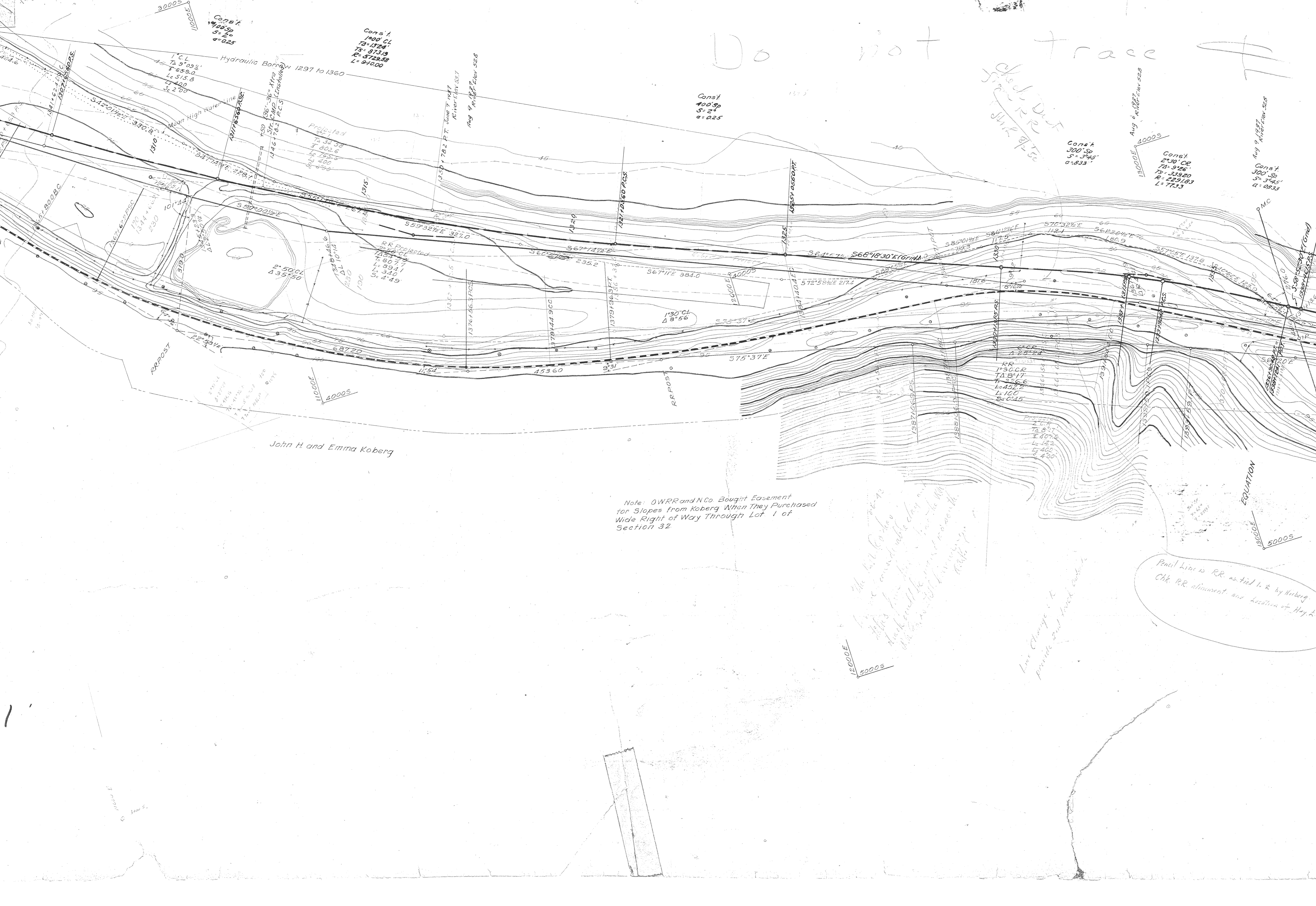
KOB

CUTTLATED Field

12371.16V 47.5  
12371.16V 47.5



Do not trace



Const  
100' Sp  
S: 2'  
a: 0.25

Const  
100' Cl  
T: 1324'  
R: 873.19  
L: 5729.58  
L: 940.00

Const  
100' Sp  
S: 2'  
a: 0.25

Const  
300' Sp  
S: 3'45"  
a: 833'

13000E  
4000S

Const  
200' Cl  
T: 9126'  
R: 229.20  
L: 7733

Const  
300' Sp  
S: 3'45"  
a: 833'

Const  
300' Sp  
S: 3'45"  
a: 833'

Hydraulic Borrow 1297 to 1360

Mean High Water Line

Projected  
T: 32.50  
R: 202.6  
L: 759.5  
L: 400  
S: 0.25

RR Projected  
T: 807.7  
R: 894.1  
L: 340  
S: 4'49"

1:30 Cl  
a: 8'56"

RR  
T: 300.0  
R: 229.20  
L: 7733  
S: 0.25

RR  
T: 807.7  
R: 894.1  
L: 340  
S: 4'49"

John H and Emma Koberg

Note: OWRR and NCo Bought Easement for Slopes from Koberg When They Purchased Wide Right of Way Through Lot 1 of Section 32

*The NW 1/4 of Sec 32  
is owned by NCo  
and will be conveyed to OWRR  
which will be the same as the NW 1/4  
of Sec 32, Township 10N, Range 10E, N 1/2  
of Sec 32, Township 10N, Range 10E, N 1/2*

*Line Change in  
provide and level control*

*Pencil line is RR as tied to by Koberg  
Chk. RR alignment and location of Hwy.*

3000 S

EQUATION

13000E  
5000S

40005  
14000E

Aug 9, 1987  
Const.  
300' Sp.  
S= 3'45"  
d= 0833

Const.  
400' Sp.  
S= 5'  
d= 0625

Aug 9, 1987  
Const.  
300' Sp.  
S= 3'45"  
d= 0833

Const.  
2°30' CL  
TA= 28°23'30"  
Ts= 805.22  
Ts= 1008.10  
R= 2291.83  
L= 48567

Projected  
RR  
2°10' CL  
TA 18°57'  
Ts 591.7  
Ls 634.6  
Ls 240'  
Sc 2'36"

Const.  
900' Sp.  
S= 11'45"  
d= 0278

Projected RR  
2°10' CL  
TA 21°19'1/2"  
Ts 698.5  
Ls 584.2  
Ls 400'  
Sc 4'20"

Projected RR  
2°10' CL  
TA 20°58'  
Ts 687.5  
Ls 567.7  
Ls 400'  
Sc 4'20"

1362+997 P.C.S.

1401+839 P.C.S. RR

1343+151 P.C.S.

136-42' Xtra Sign  
CNP (Installed)

140+80 P.C. RR

1101+233 P.T. RR

1411+917 P.T.

1350+451 P.T.

1336+318 P.T.  
Aug 11, 1987 ELEV. 588

High Water Line

1360

587°16' E (Grid)

1365

6.5  
6.5  
6.6

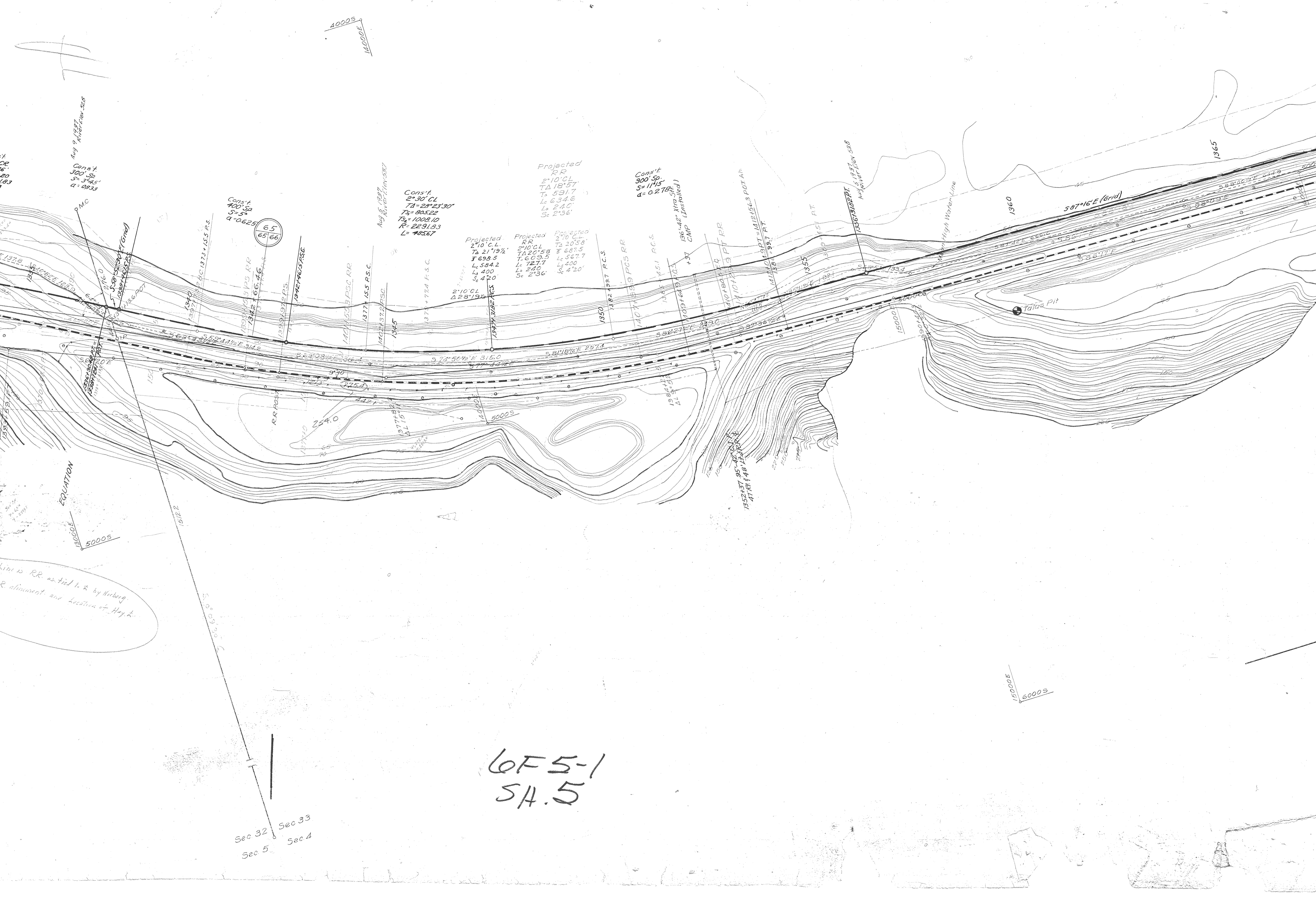
15000E  
6000S

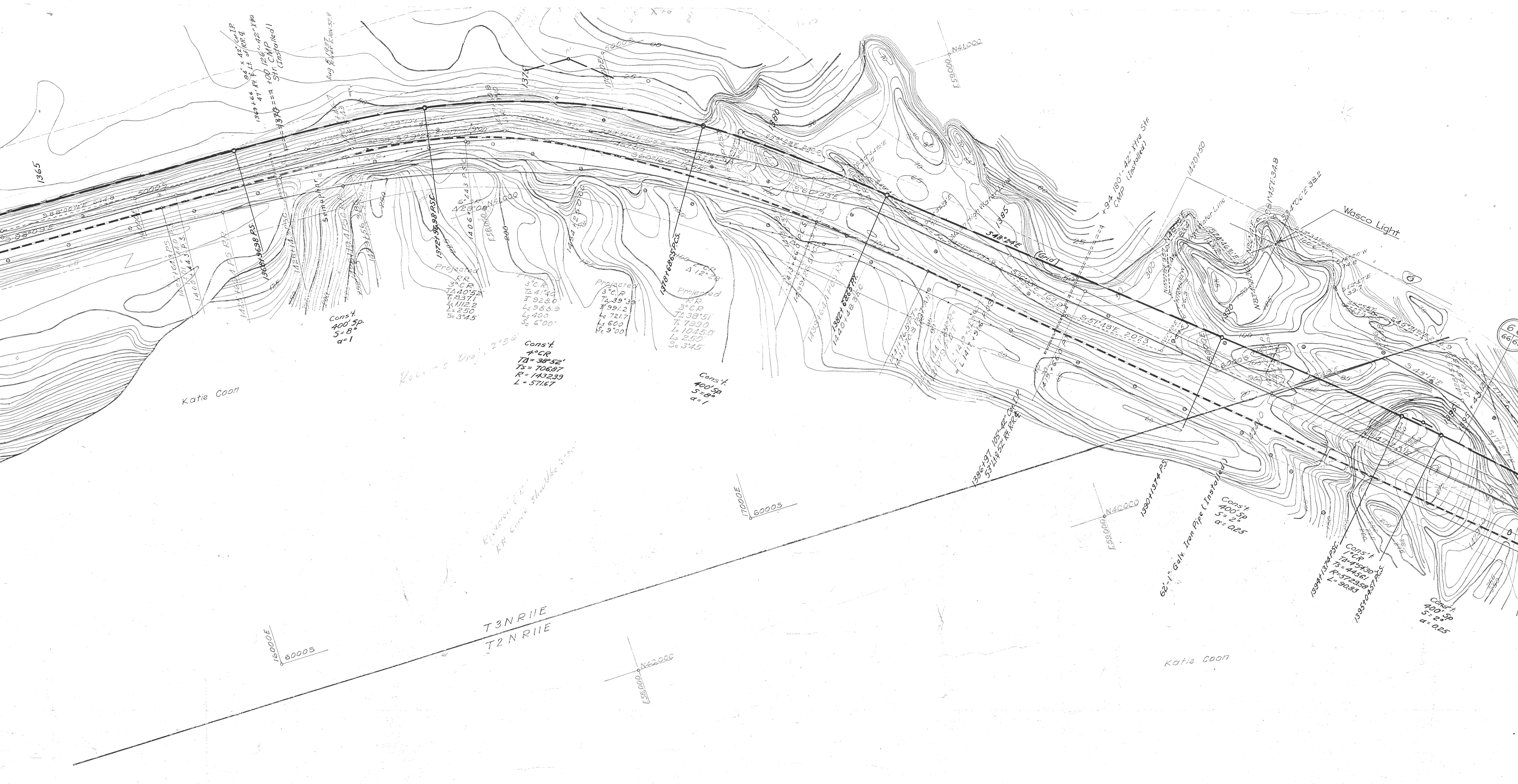
6F5-1  
5A.5

Sec 32 Sec 33  
Sec 5 Sec 4

EQUATION  
18000E  
5000S

Line is RR as tied to by Nierberg.  
R. alignment and location of Hwy. A.





Katie Coon

Const 4  
400 Sp  
5 = 8°  
a = 1

Roberts Dip, 2°58'  
Const 4  
4° CR  
TA = 38°52'  
TS = 70887  
R = 143233  
L = 57167

Projected RR  
3° CR  
TA 40°52'  
TS 3371  
L 112.2  
Ls 250  
Ss 3°45'

Const 4  
400 Sp  
5 = 8°  
a = 1

T3NRIIE  
T2NRIIE

Const 4  
400 Sp  
5 = 2°  
a = 0.25

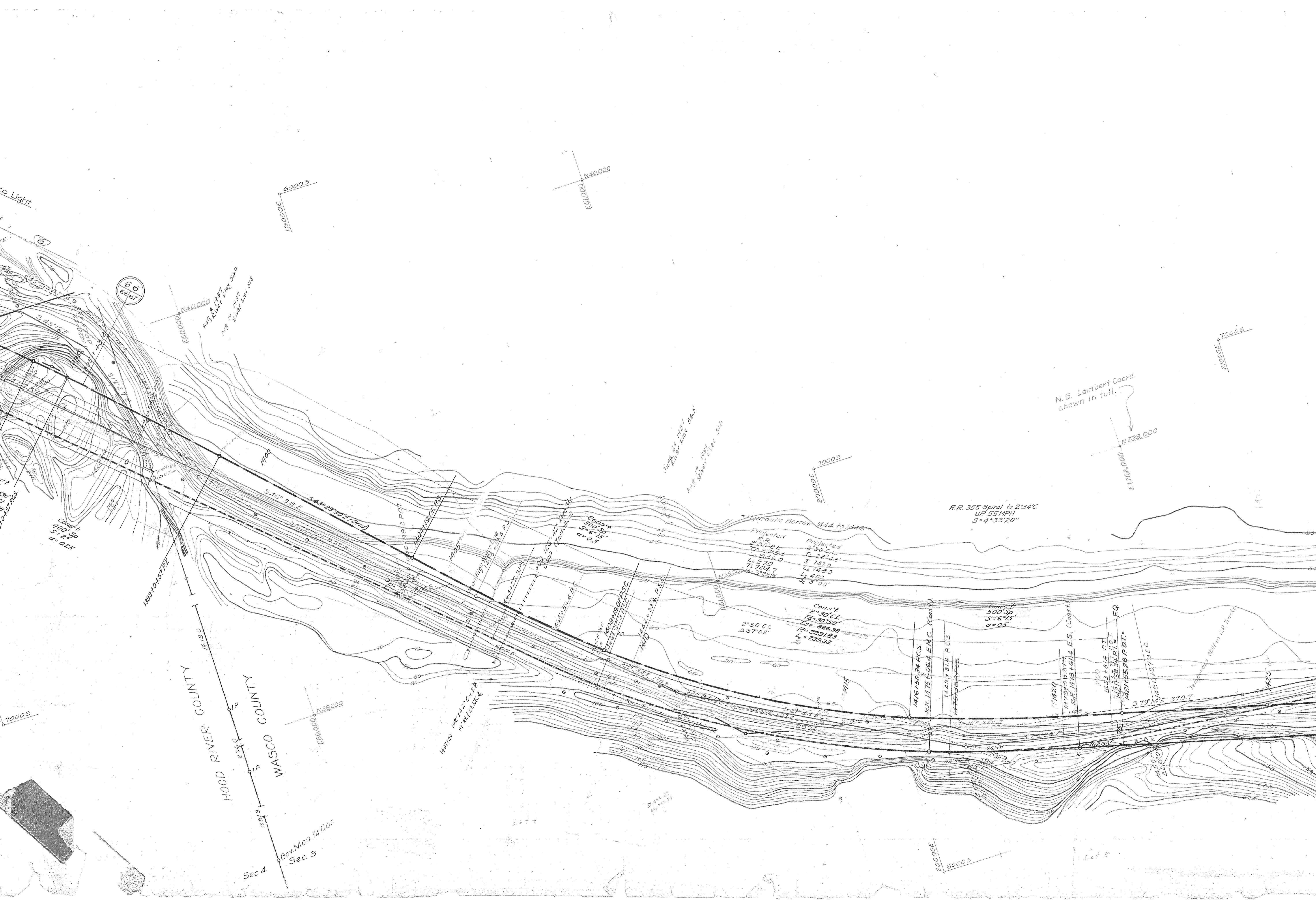
Const 4  
400 Sp  
5 = 2°  
a = 0.25

Const 4  
400 Sp  
5 = 8°  
a = 0.25

Katie Coon

6F5-1  
SH. 6





66  
68/67

Aug. 8, 1937  
AUG. 8, 1937  
AUG. 16, 1937  
River Elev 540

1389+0457 P.T.

HOOD RIVER COUNTY

WASCO COUNTY

Gov. Mon. 1/4 Cor.  
Sec. 3

E610000 N40.000

60005  
19000E

70005  
80000E

70005  
21000E

N.B. Lambari Coord.  
shown in full.

E. 1762.000 N. 739.000

R.R. 355 Spiral to 2°34'  
UP 55 MPH  
S = 4°33'20"

Projected  
R.R.  
2°30' CL  
TA 275.4  
Lc 846.0  
Ls 210  
Ts 704.7  
Lc 743.0  
Ls 400  
S = 3°22'

Const.  
2°30' CL  
Ts = 986.38  
R = 2291.83  
Lc = 739.33

Const.  
500' Sp  
S = 6°15'  
a = 0.25

EQ

1421+55.26 P.O.T. =

1416+58.34 P.C.S.  
R.R. 1475+06.4 E.M.C. (Const.)  
1449+81.4 P.A.S.  
1420  
R.R. 1475+06.4 E.S. (Const.)  
1433+81.4 P.T.  
1421+55.26 P.O.T. =

Temporary Shift in RR Tracks

20000E  
80005

Lot 3

70000

70000

2.1 S. NC.

July 8, 1937  
River Elev 546

Aug. 18, 1937  
River Elev 516

Const.  
RR 540' Spiral  
S = 5° 33.45'  
UP 70 MPH

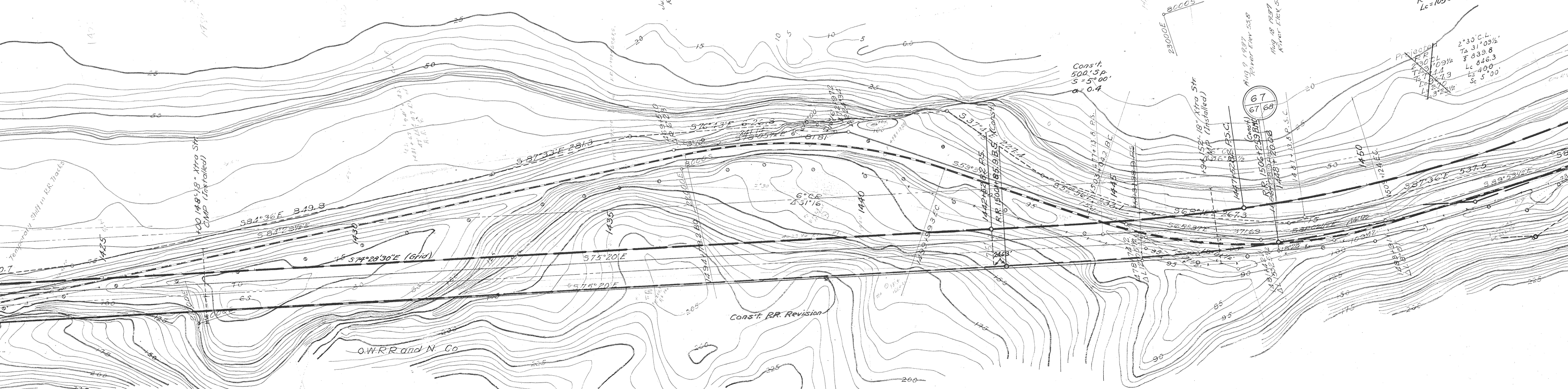
Const.  
500' Sp.  
S = 5° 00'  
α = 0.4

Const.  
2° CL  
TA = 31° 08'  
TB = 1049.02  
R = 2868.43  
Lc = 1056.67

R.R. 2° CL  
TA = 31° 08'  
TB = 1049.02  
R = 2868.43  
Lc = 1056.67

2° 30' C.L.  
TA = 31° 03 1/2'  
TB = 839.8  
Lc = 406.3  
Ls = 400'  
Se = 5° 00'

67  
67/68



O.W.R.R. and N. Co.

Const. RR Revision

67 5-1  
SH. 7

90000

Const.  
2° CL  
TA = 31° 08'  
TS = 1049.02  
R = 2868.43  
Lc = 1056.67

R.R. 2° 03' C.L.  
TA = 31° 08'  
TS = 1046.73  
Es = 111.03

R.R. 540' Spiral  
S = 5° 33' 45"  
UR 70 M.P.H.

Const.  
500' Sp.  
S = 5° 00'  
Q = 0.4

July 30 1927 94000  
River Elev. 252.9  
Aug 19 1927  
River Elev. 316

July 30 1927 94000  
River Elev. 252.9  
Aug 19 1927  
River Elev. 316

July 30 1927 94000  
River Elev. 252.9  
Aug 19 1927  
River Elev. 316

July 30 1927 94000  
River Elev. 252.9  
Aug 19 1927  
River Elev. 316

July 30 1927 94000  
River Elev. 252.9  
Aug 19 1927  
River Elev. 316

July 30 1927 94000  
River Elev. 252.9  
Aug 19 1927  
River Elev. 316

July 30 1927 94000  
River Elev. 252.9  
Aug 19 1927  
River Elev. 316

July 30 1927 94000  
River Elev. 252.9  
Aug 19 1927  
River Elev. 316

July 30 1927 94000  
River Elev. 252.9  
Aug 19 1927  
River Elev. 316

July 30 1927 94000  
River Elev. 252.9  
Aug 19 1927  
River Elev. 316

July 30 1927 94000  
River Elev. 252.9  
Aug 19 1927  
River Elev. 316

July 30 1927 94000  
River Elev. 252.9  
Aug 19 1927  
River Elev. 316

24000E  
9000S

24000E  
9000S

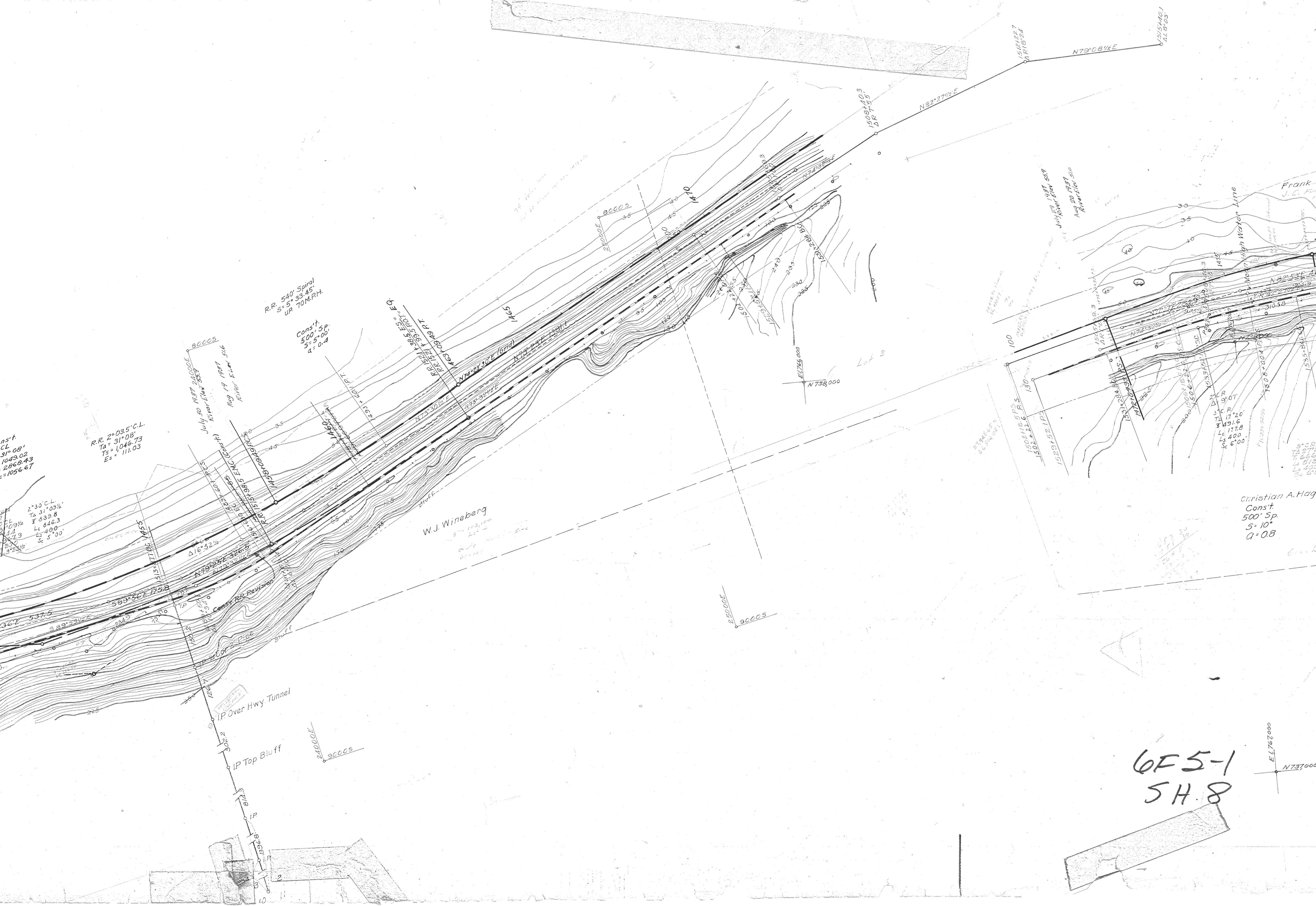
24000E  
9000S

24000E  
9000S

W.J. Wineberg

Christian A. Hoge  
Const.  
500' Sp.  
S = 10°  
Q = 0.8

6F5-1  
5H.8





Aug 26 1927  
River Elev. 506

Frank Ginger  
J.C. Fuller (Gov. Lot 3)

Common Borrow Both sides of Center Line Sta 1520+60 to 1535+60

Selena and G.R. Merrill

Diamond D. Navigation Co

City of Mosier

Keith Chamberlain

Gov. Mort.

Talus Pit

Projected  
Sta  
L=300.00  
TA=18°21'  
L=991.4  
L=400'  
Sc=700'

Christian A. Hoge  
Const  
500' Sp.  
S=10°  
Q=0.8

Const  
4° CR  
TA=28°58'30"  
TS=621.73

Const  
500' Sp.  
S=10°  
Q=0.8

E 1762000  
N 737000

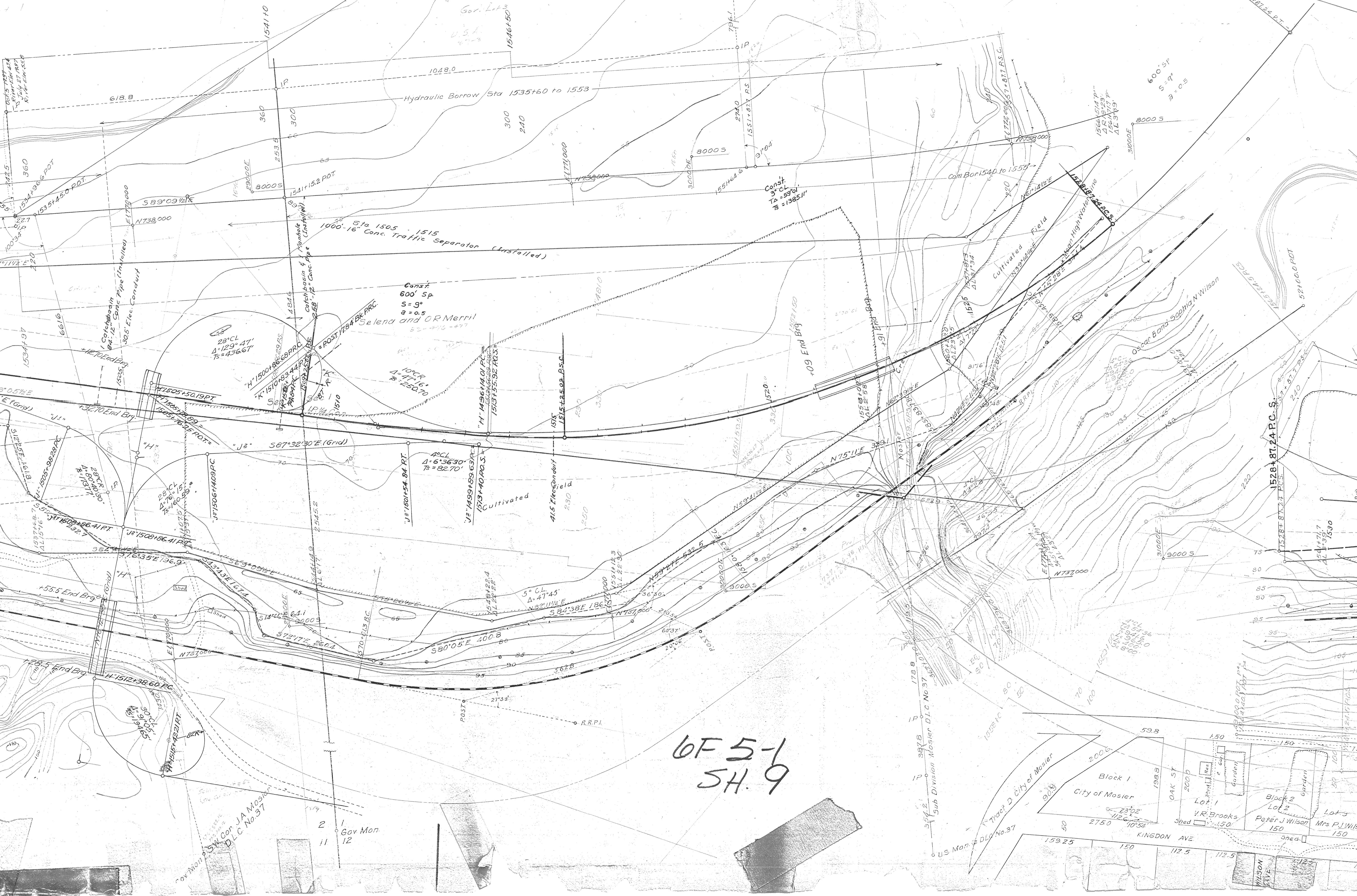
E 176000  
S 0006

E 1763000  
N 737000

E 176000  
S 0005

E 1769000  
N 737000

5-1



Const.  
600' Sp  
S = 9°  
a = 0.5  
Selend and OR Merrill  
52-476-477

28° CL  
Δ = 129° 47'  
Ts = 496.67

10° CL  
Δ = 71° 16'  
Ts = 250.70

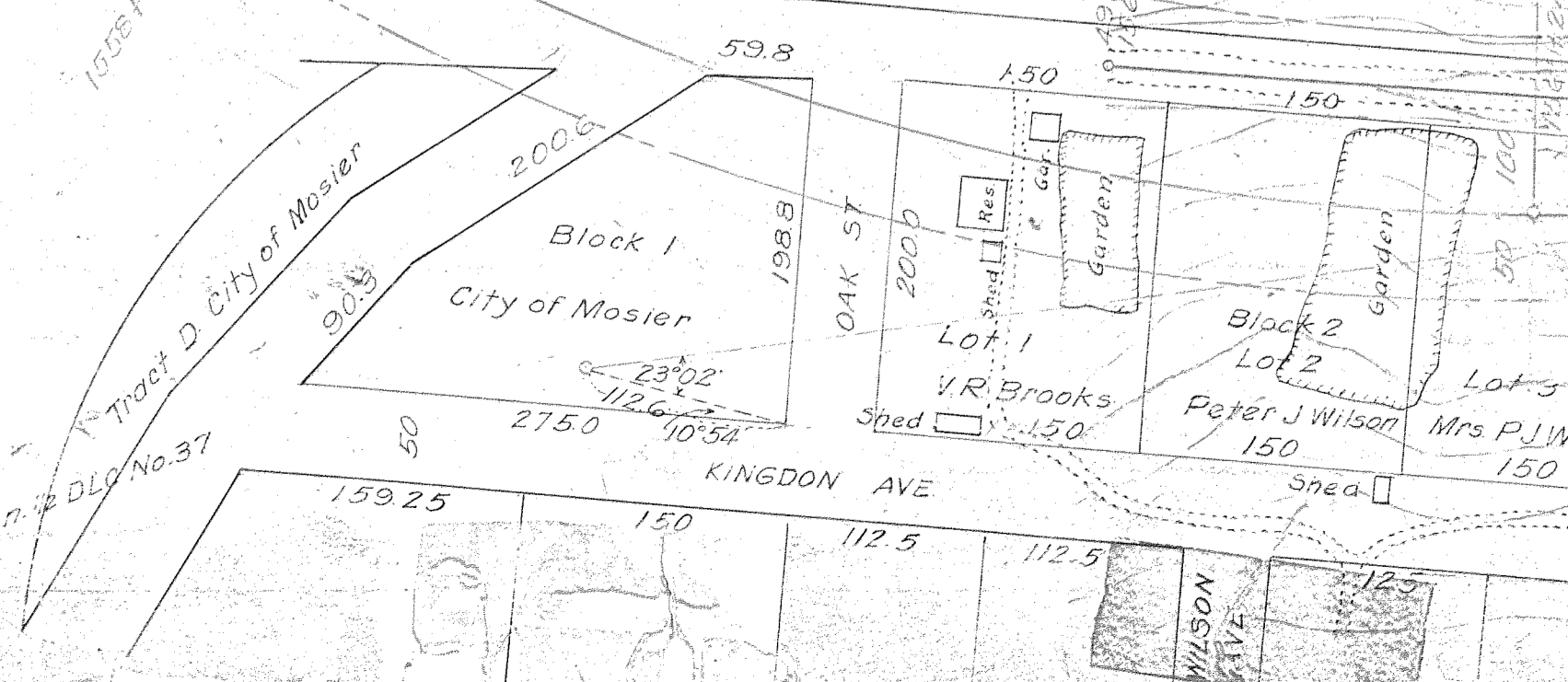
4° CL  
Δ = 6° 36' 30"  
Ts = 82.70

5° CL  
Δ = 47° 45'  
Ts = 112.5

6F 5-1  
SH. 9

Gov. Mon. SW. Cor. J.A. Mosier  
D.L.C. No. 37

2 1 Gov. Mon.  
11 12





Constructed

69  
69 70

600' Spiral  
S = 9° 00'  
d = 0.5

3' CL  
72.46° 08'  
L 1116.6  
L 938.1  
L 600  
S 9° 00'

1534+87.24 P.T.

1528+87.24 P.C.S.

Correct Alignment As Of Oct. 12, 1951

Grid N. 44° 21' E. (True N. 43° 43' E.)

Hydraulic Borrow 1558+50 to 1588+50

Oscar E and Sophia N Wilson

Wasco County

Peter J Wilson

Oscar E and Sophia N Wilson

West Line Richard Marsh, VI DLC

USM... SW... Richard Marsh, VI DLC

67  
51

Constructed 1953



600' Sp  
 $\Delta = 9^\circ$   
 $a = 0.5$

3° C.R.  
 $\Delta = 69^\circ 30'$   
 $T_s = 1608.47$   
 $L = 1623.33$

P.I. 1579+79.15  
 $N = 741,409.54$   
 $E = 1,775,793.98$

548°46'W  
 1560.1

562°28'W  
 119.5

600' Spiral  
 $\Delta = 9^\circ 00'$   
 $a = 0.5$

3297.4  
 3° C.L.  
 $\Delta = 17^\circ 42'$

3° C.R.  
 $\Delta = 21^\circ 45'$   
 $T_s = 567.5$   
 $L = 325.0$   
 $S = 400$   
 $\Delta = 6^\circ 00'$

3° C.R.  
 $\Delta = 67^\circ 02'$   
 $T_s = 1569.86'$

1° C.R.  
 $\Delta = 22^\circ 08'$   
 $T_s = 1820.0$   
 $L = 1813.0$   
 $S = 400$   
 $\Delta = 2^\circ 00'$

6F5-1  
 5H.10

T2N R11E WM  
 T2N R12E WM

T3N R12E WM  
 T2N R12E WM

1586+43.74 P.C.S.

600' Spiral  
 $\Delta = 9^\circ 00'$   
 $a = 0.5$

1592+43.74 P.T. B1  
 1592+60.36 P.O. T1

EQUATION



6F 5-1  
SH. 11

EQUATION