

OREGON STATE HIGHWAY DEPARTMENT

Located Line

CASCADE LOCKS-VIENTO SECTION

COLUMBIA RIVER HIGHWAY

HOOD RIVER COUNTY

Scale: 1 inch = 100 feet

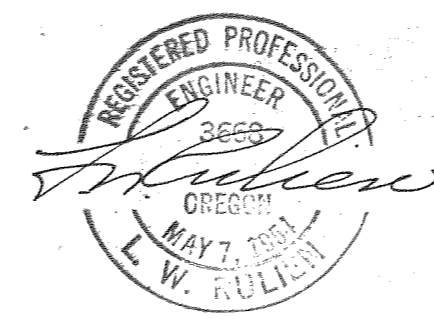
Traced by G.E.H. Aug., 1949
Retraced by M.L.J. Aug., 1968

GRID BEARINGS NORTH ZONE

PART 3 OF 3 PARTS

DRG. NO. 6B-35-7

ACCESS CONTROL LINE _____
Survey Map Completed Aug., 1969



D-180N-68

SEE 6B-35-6

T. 3 N., R. 9 E. W.M. SEC. 31
T. 2 N., R. 9 E. W.M. SEC. 6

LOT 1

6 5

Gov't Meander Line 7

Sold to OWR & N. Doed RR Co
RR 374
67-231

State Land Board
19242

2° CL
TA = 22° 03' 30"
TB = 758.80'
400 Sp.
S = 4' 00"
a = 0.5
22753 (3)

Const.
O.C. RW 18618
61-353

564' 52" (Ord.)

SP2 + 86.84 P.S.

SP3 + 86.84 P.S.C.

U.P. R.R.

A.T. Cable

See 5B-34-21
For Eosa RR 382

15933
Special Use Permit
RW 12134

Lot 5

U.S. Govt.

N 740,000

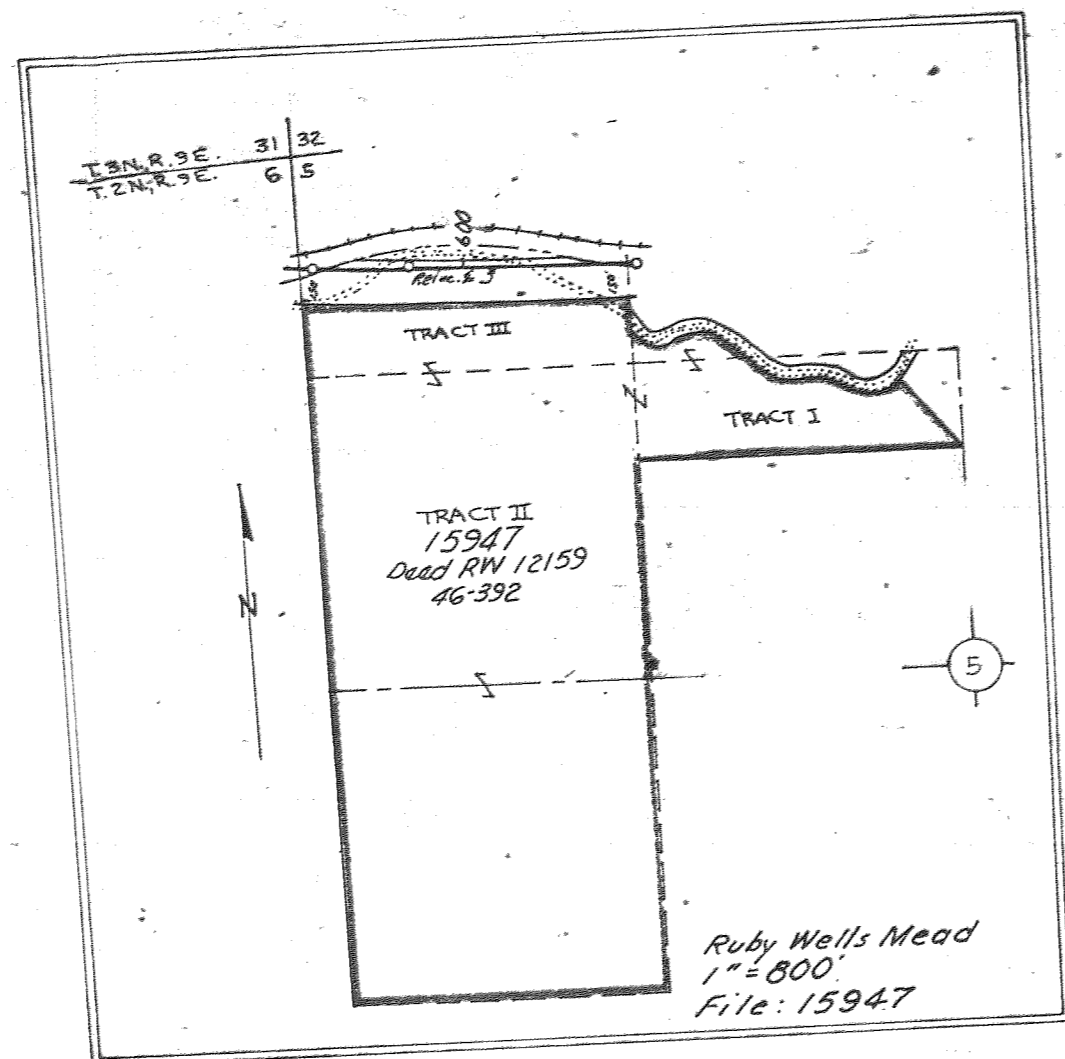
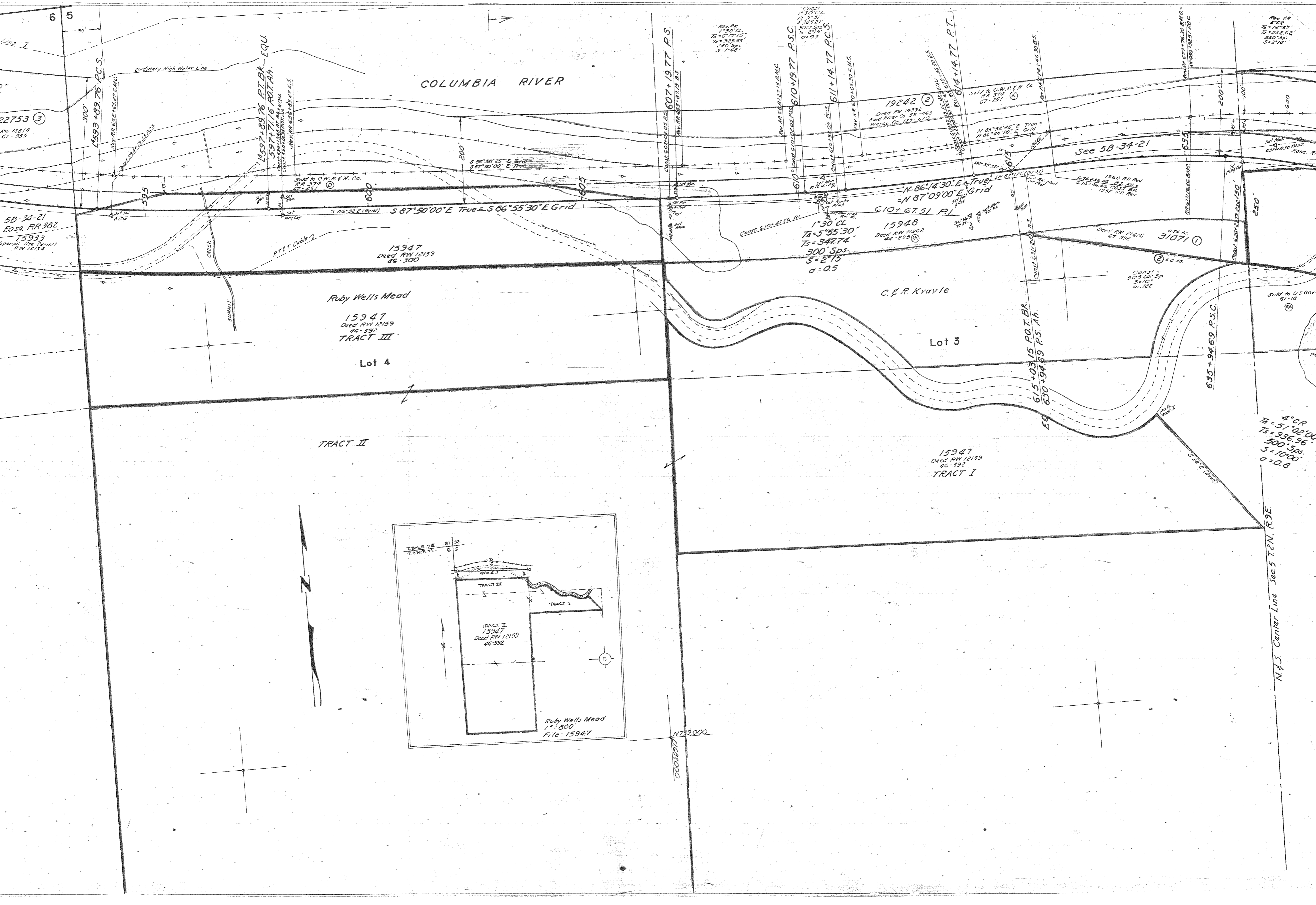
SP4 + 45.64 P.I.

Const. 390' 21.86 P.I.

1593 + 89.76 P.C.S.

Const. 652' 16.87 E.M.C.

COLUMBIA RIVER



N.F.S. Center Line Sec 5 T.2N. R.9E.

N733,000
E1687,000

Rev. RR
T = 10'35"
TS = 232.62'
S = 330.30'
a = 3.718

19242 (2)
Deed RW 14332
Wood River Co. 53-449
Wasco, Co. 122-510

15948
Deed RW 11362
44-235 (R)

31071 (1)
Deed RW 21616
67-392

Const -
102.66' SP
5-10'
21-702

4° CR
TA = 51°02'00"
TS = 936.96'
S = 500 Sps.
S = 10'00"
a = 0.8

22753 (3)
RW 18018
61-355

15933
Special Use Permit
RW 12134

6 5

Line 7

5B-34-21
E.O.S. RR 382

Sold to O.W.R.E.N. Co.
RR 374
67-251

15933
Special Use Permit
RW 12134

15947
Deed RW 12159
46-300

15947
Deed RW 12159
46-392
TRACT III

Lot 4

TRACT II

TRACT I

15947
Deed RW 12159
46-392
TRACT I

635 + 94.69 P.S.C.

615 + 03.15 P.O.T.BK.
EQ 630 + 94.69 P.S. Ah.

611 + 14.77 P.C.S.

610 + 49.77 P.S.C.

607 + 19.77 P.S.

614 + 14.77 P.T.

610 + 47.26 P.I.

610 + 47.26 P.I.

15933
Special Use Permit
RW 12134

15947
Deed RW 12159
46-300

15947
Deed RW 12159
46-392
TRACT III

Lot 4

TRACT II

TRACT I

15947
Deed RW 12159
46-392
TRACT I

635 + 94.69 P.S.C.

615 + 03.15 P.O.T.BK.
EQ 630 + 94.69 P.S. Ah.

611 + 14.77 P.C.S.

610 + 49.77 P.S.C.

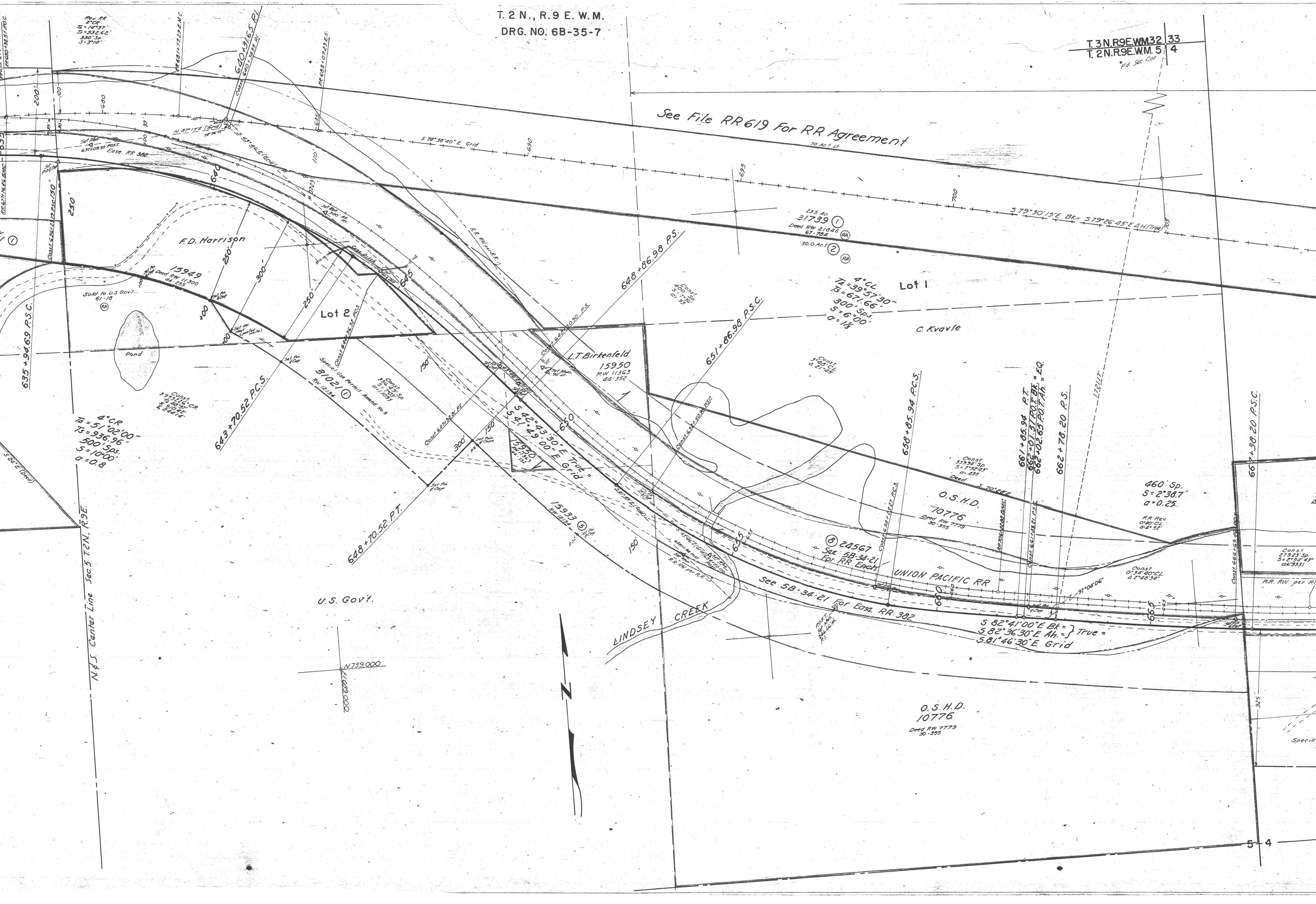
607 + 19.77 P.S.

614 + 14.77 P.T.

610 + 47.26 P.I.

610 + 47.26 P.I.

See File RR 619 For RR Agreement
70 Ac. ±



Rev. RR 2 CR
74 = 147.97'
75 = 532.62'
330 Sp.
5 = 378'

F.D. Harrison

L.T. Birkenfeld

C. Kvalie

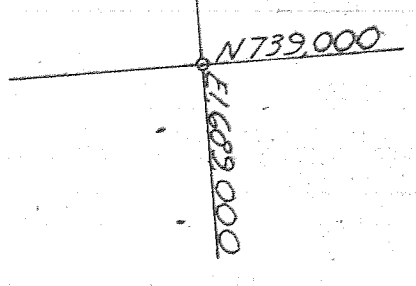
U.S. Govt.

LINDSEY CREEK

UNION PACIFIC RR

O.S.H.D.
10776
Deed RW 7779
30-355

N.F.S. Center Line Sec 5 T.2N. R.9E.



SEE 5B-19-23
FOR PRIOR RW

C.A. Kvalve

Lot 2

Lot 1

See File RR 619 For RR Agreement

To RR 31248 ①

Sold to O.W.R.E.N. Co.
Under RR 374
67-251

667+38.20 P.C.S.

671+54.14 P.C.S.

672+74.14 P.C.S.

675+99.85 P.C.S.

679+49.85 P.T.

31836 ①
Dead Misc. S-243
67-730
1°09' CL
Δ = 4°47'

120' Sp. Seg.
S = 1°44.4'
Δ = 0.5

1°45' CL
Δ = 5°42'

350' Sp.
S = 3°03'45"
Δ = 0.5

V. Morgus
42-210
② 7.4 Ac.

31836 ①
Dead Misc. S-243
67-730
1.6 Ac.

24567 ⑧
See 5B-34-21 For RR Ench.

N 80°17'30" E Grid
159517
159527

N 79°27'30" E True

Rev. RR
420' Sp.
S = 5°15'
Δ = 0.535

O.S.H.D.

691+50.12 P.C.S.

693+88.45 P.C.S.

696+88.45 P.T.

See 5B-23-13
RR 264 for RR Ease.

31021 ②

Special Use Permit RW 12134
Amend. No. 9

Lot 5

U.S. Gov't.

O.S.H.D.

688+50.12 P.S.

2°30' CR
TΔ = 13°27'30"
TΣ = 420.58'
300' Sp.
S = 3°45'
Δ = 0.833

④

697+02.46 P.S.

Rev. RR 1960
397.5 Sp.
S = 3°24'43"

Rev. RR
420' Sp.
S = 5°15'
Δ = 0.535

Const. 633' P.C.S.
RR 733-109-39 B.C.

Const. 633' P.C.S.
RR 733-109-39 B.C.

Rev. RR
420' Sp.
S = 5°15'
Δ = 0.535

Const. 633' P.C.S.
RR 733-109-39 B.C.

Rev. RR
420' Sp.
S = 5°15'
Δ = 0.535

Const. 633' P.C.S.
RR 733-109-39 B.C.

Rev. RR
420' Sp.
S = 5°15'
Δ = 0.535

Const. 633' P.C.S.
RR 733-109-39 B.C.

Rev. RR
420' Sp.
S = 5°15'
Δ = 0.535

Const. 633' P.C.S.
RR 733-109-39 B.C.

Rev. RR
420' Sp.
S = 5°15'
Δ = 0.535

Const. 633' P.C.S.
RR 733-109-39 B.C.

Rev. RR
420' Sp.
S = 5°15'
Δ = 0.535

Const. 633' P.C.S.
RR 733-109-39 B.C.

Rev. RR
420' Sp.
S = 5°15'
Δ = 0.535

Const. 633' P.C.S.
RR 733-109-39 B.C.

Rev. RR
420' Sp.
S = 5°15'
Δ = 0.535

Const. 633' P.C.S.
RR 733-109-39 B.C.

N 740,000
E 694,000

Lot 3

RIVER

Lot 4

COLUMBIA

O.S.H.D.
Deed P-129 B
27-115
6106
See 1R-1-44
3B-14-8

1°57' CL
TA = 53°44'00"
TS = 1684.57'

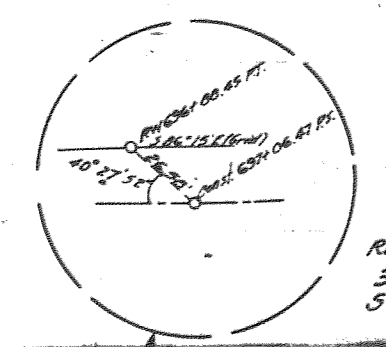
CONST
1°57' CL
TA = 53°44'
TS = 1667.95'

Rev RR 1952
2°02'30" CL
TA = 50°51'55"
TS = 1504.22'

Sold to O.W.R.E.N. Co.
Under RR 374
67-251

Rev RR 1960
2°02'30" CL
TA = 60°27'00"
TS = 1804.91'

390' Sp.
S = 3°48'09"
a = 0.5



Rev RR 1952
337.5 Sp.
S = 3°26'43"

Rev RR 1960
337.5 Sp.
S = 3°26'43"

697 + 02.46 P.S.

700 + 92.46 P.S.C.

State Land Board

19242
Deed RW 14392
50-494 (Hood River Co.)
53-469 (Wasco Co.)
127-194
129-510

CONST
390' Sp.
S = 3°48'09"
a = 0.5

PACIFIC RR CO.
UNION PACIFIC RR CO.

See 5B-34-21
for RR Easement
RR 382

N 739,000
E 696,000

O.S.H.D.
Deed P-129
22-451
6106
See 1R-1-44
3B-14-8

STATION CREEK

Cabin Creek

From Township Plat

693 + 88.45 P.C.S.

696 + 88.45 P.T.



T. 3 N., R. 9 E. W.M.
T. 2 N., R. 9 E. W.M.

U.S.A.

6106
Deed P. 125B
21-115
See IR-1-44

Lot 4
1° 57' CL.
To = 53° 04'
F = 168451'

Rev. RR
2° 02' 30" CL.
To = 50° 51' 12"
F = 160245'

19242 ③
Deed RW 14392-144
Hood River Co. 53-469
127-194
Wasco Co. 129-510

Const.
1° 57' CL.
To 53° 04'
F = 162395'

390 SP.
5° 3' 40" 09"
Q = 0.5

Rev. RR
337.5 SP.
5° 3' 26" 43"
Q = 0.5

Const.
390 SP.
5° 3' 40" 09"
Q = 0.5

S 5° 19' 15" E 432.7'
S 47° 07' 07" E 733.73' (True)
S 72° 22' 12" E 727.17' (True)

UNION PACIFIC RR CO.
N 39° 11' E True = N 40° 01' E Grid
N 40° 06' 15" E (True)
N 40° 32' 30" E (Grid)

State Land E
Sold to O.W.R. & N. Co.
Under RR 374
67-251

See SB 34-21
RR 382 for RR Ease.

36406

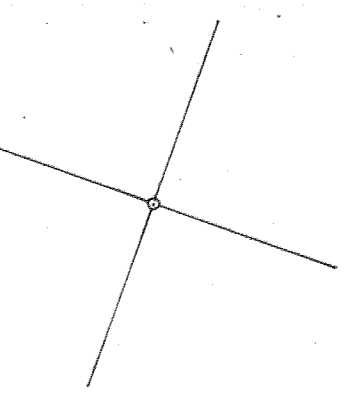
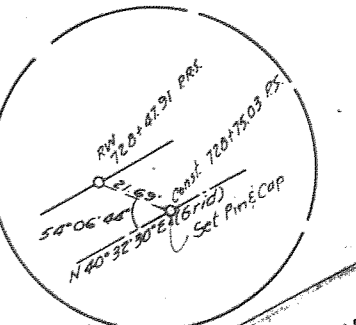
From Township Plat

From U.S.E. Map

From Township Plat

From U.S.E. Map

4-3



COLUMBIA

RIVER

SEE 5B-34-21 for R. R. Encroachment Map

SEE IOC-22-7
IR-5-567

M. J. Lawrence

① Sold to O.W.R. & N. Co.
Under RR 374 67-251

Rev. RR
90' Sp.
S=0'27"

31350 RW 23233
O.S. Ac. 63-396

11.5 Ac.
24567 ⑨

See 5B-34-21
RR 382 for RR Easement

Special Use Permit Amend. No. 1
15933
RW 12134

Lot 6

2° CR
TA=43° 50'
TB=1353.51
400' Sp.
S=4' 00"
a=0.5

J. O. Jones
15311 ①
Deed RW 10874
42-362

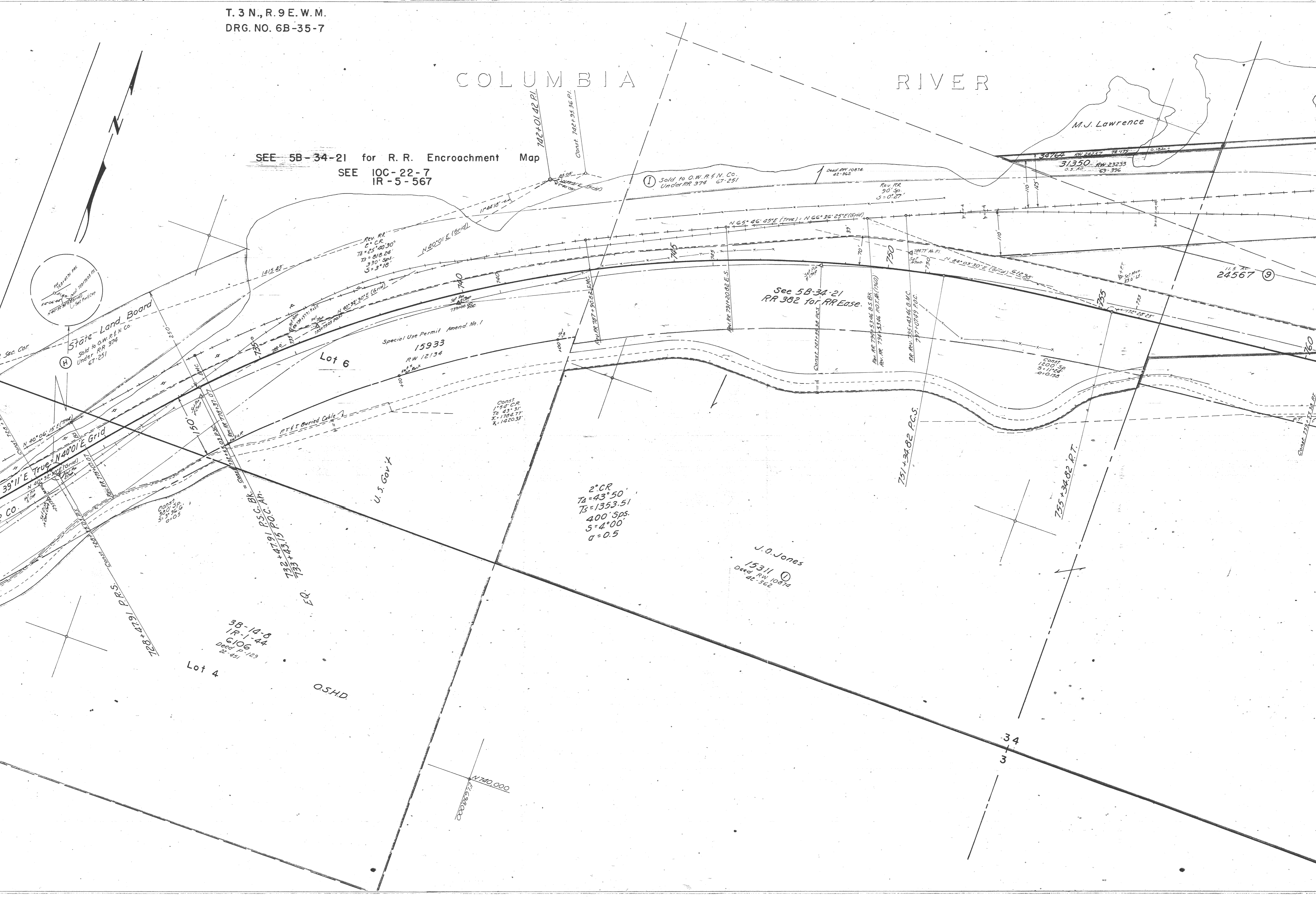
3B-14-8
1R-1-44
6106
Deed P. 123
21-451

Lot 4

O.S.H.D.

U.S. Gov't

State Land Board
Sold to O.W.R. & N. Co.
Under RR 374
67-251



See File RR 619 For RR Agreement

J.O. Jones
15311
Deed RW 10874
42-362

34765
0.89 Ac
RW 24156
71-771
RR 324
1960
0°32'30" CR
T_A = 2°04'00"
T_S = 250.79'
S = 0°19'30"

To RR 31248
5.5 Ac

31238
Deed RW 22395
68-649

4° CL
T_A = 24°30'
T_S = 562.34'
500' Sp.
S = 10°00'
a = 0.8

R.T. Yasui et al

Union Pacific R.R. Co.

VIENTO STATE PARK

1R-1-8
Deed P-20
18-606

N 83°01' E True = N 83°51' E Grid
N 83°03'30" E (Grid)

N 58°31' E True = N 59°21' E Grid

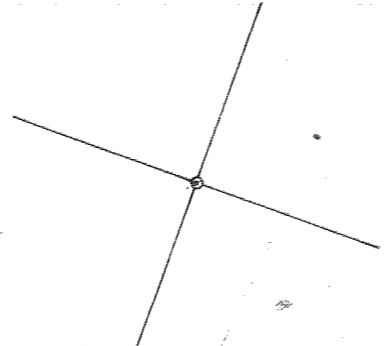
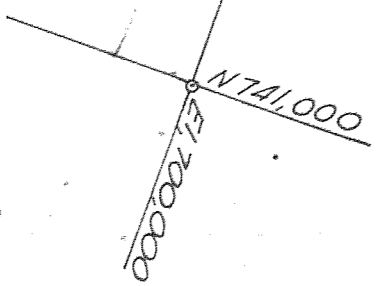
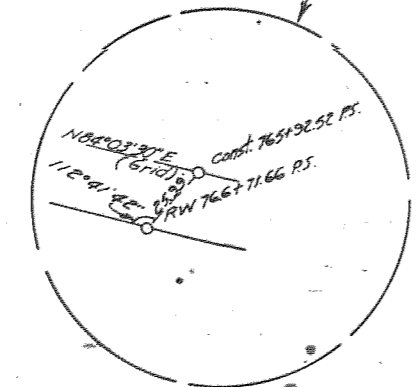
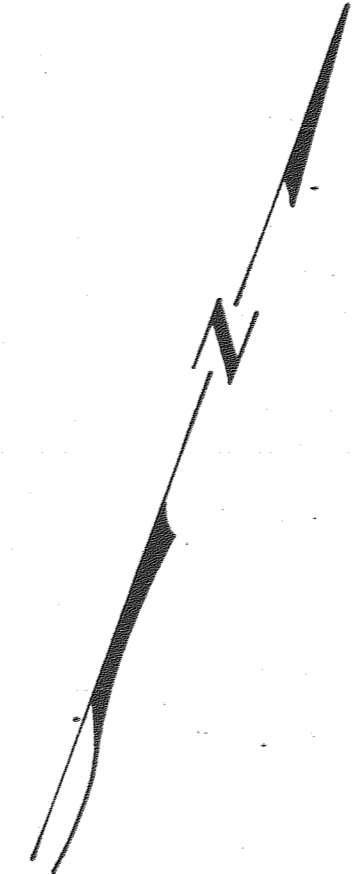
See 5B-34-21
RR 382
for RR Edge.

15311
Deed RW 10874
42-362
S & SE

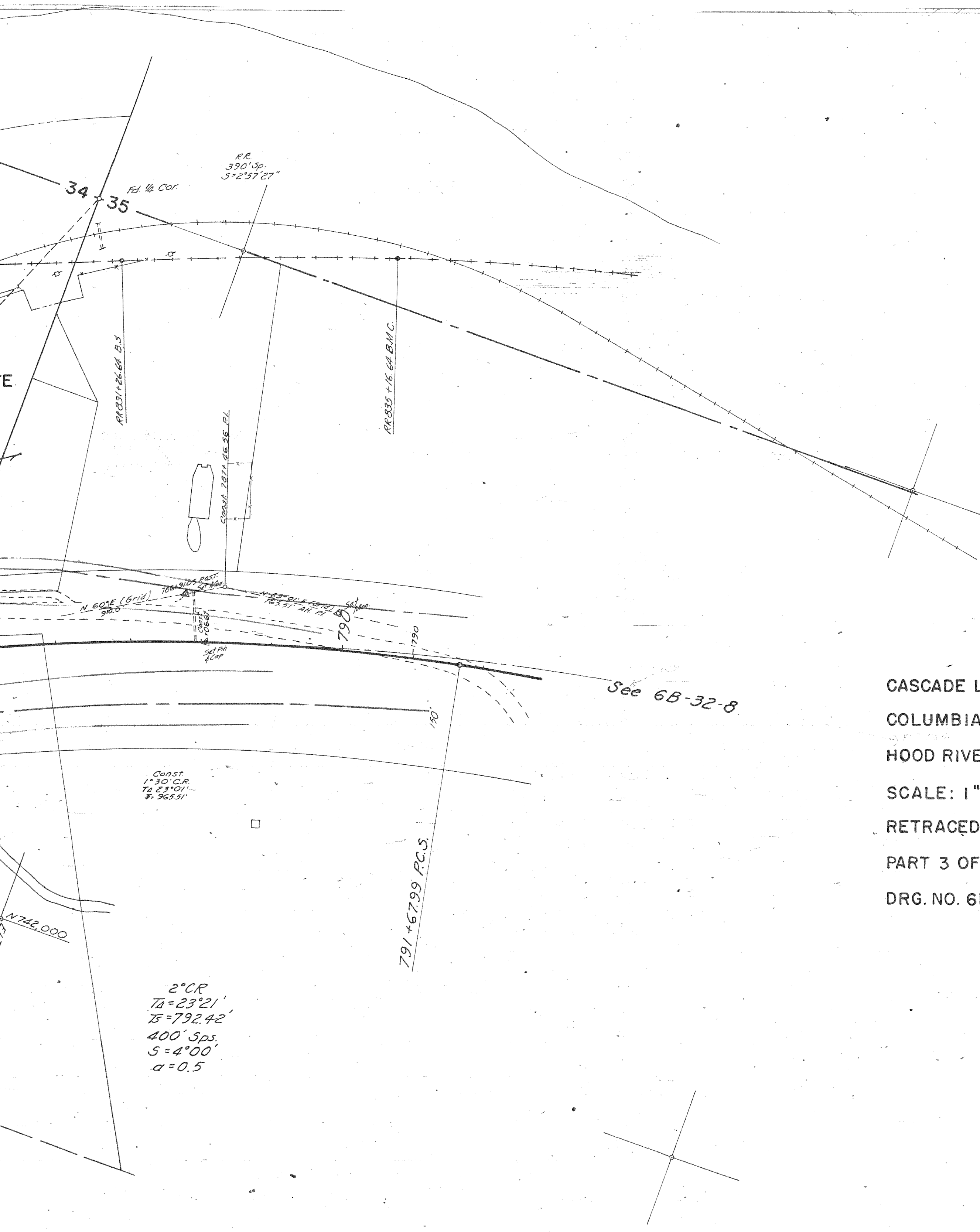
J.O. Jones

See 6B-32-8 for Parcels 2, 3 & 4

2° CR
T_A = 23°21'
T_S = 792.42'
400' Sp.
S = 4°00'
a = 0.5



Col. River Hwy. 1968
Viento → Sec 6 2nd E



CASCADE LOCKS-VIENTO SECTION
 COLUMBIA RIVER HIGHWAY
 HOOD RIVER COUNTY
 SCALE: 1" = 100'
 RETRACED AUG., 1968
 PART 3 OF 3 PARTS
 DRG. NO. 6B-35-7

See 6B-32-8