

CASCADE LOCKS - NIEMLO SEC

OREGON STATE HIGHWAY DEPARTMENT

Located Line

# CASCADE LOCKS - VIENTO SECTION

## COLUMBIA RIVER HIGHWAY

HOOD RIVER COUNTY

PART 2 of 3 PARTS

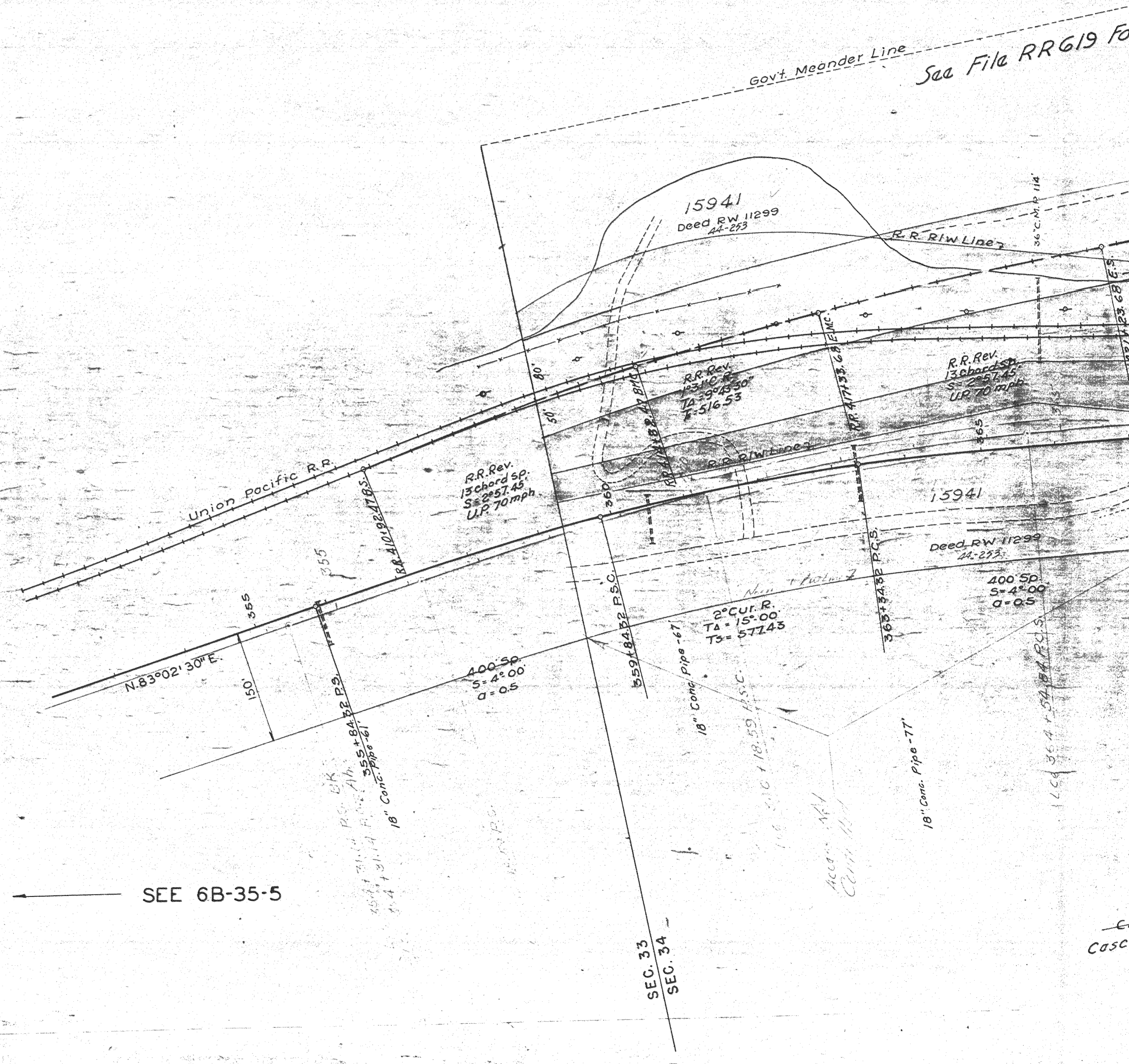
Scale: 1 inch = 100 feet

Traced by G.E.H.

August, 1949

DRG. NO. 6B-35-6

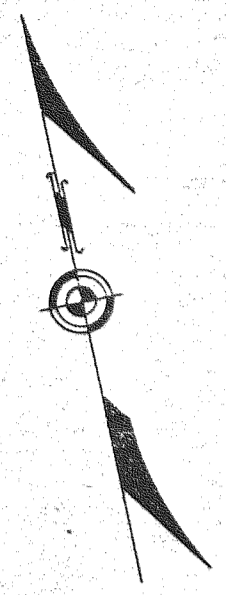
SEE 6B-35-5



SEC. 33  
SEC. 34

CASC





See File RR619 For RR Agreement



15941

24567

24567

24567

28713

41393  
Deed RW 29322  
Film G71292

Deed RW 23454  
70-139  
34200

39111  
15.440

LOT 4  
Clara A Trotter  
Cascade Locks Lbr. Co.  
44-152

Francis Wholesale Inc.  
D.D. & Ester T. Gregg (Con.P.)  
70-57  
70-59

39110  
106 Ac.

B.F. & J.W. Meinikheim  
D.D. & E.T. Gregg (Con. P.)  
74-474

WOODEN DAM 5' HIGH  
LOT 3  
O.W.R. & N.CO.

LOT 2  
Frank E. Tichenor  
Felix & John W. Meinikheim  
61-242

18" Conc. Pipe - 77'

Beacon

Cliff

Cliff

Cliff

Cliff

Cliff

Equation

Equation

R.R. RIW Line

To RR 31248

R.R. Rev. Tchoral sp. S: 0°54.6' U.P. 70 mph.

R.R. Rev. Tchoral sp. S: 0°54.6' U.P. 70 mph.

R.R. Rev. Tchoral sp. S: 0°54.6' U.P. 70 mph.

R.R. Rev. Tchoral sp. S: 0°54.6' U.P. 70 mph.

S 84°00' E.

S 86°10'30" E. S 86°09'30" E.

S 89°05'30" E.

S 89°05'30" E.

S 89°05'30" E.

S 89°05'30" E.

S 89°05'30" E.

100

100

100

100

100

100

100

100

100

100

100

100

100

100

100

100

100

100

100

100

100

100

100

100

100

100

100

100

100

100

100

100

100

100

100

100

100

100

100

100

100

100

100

100

100

100

100

100

100

100

100

100

100

100

100

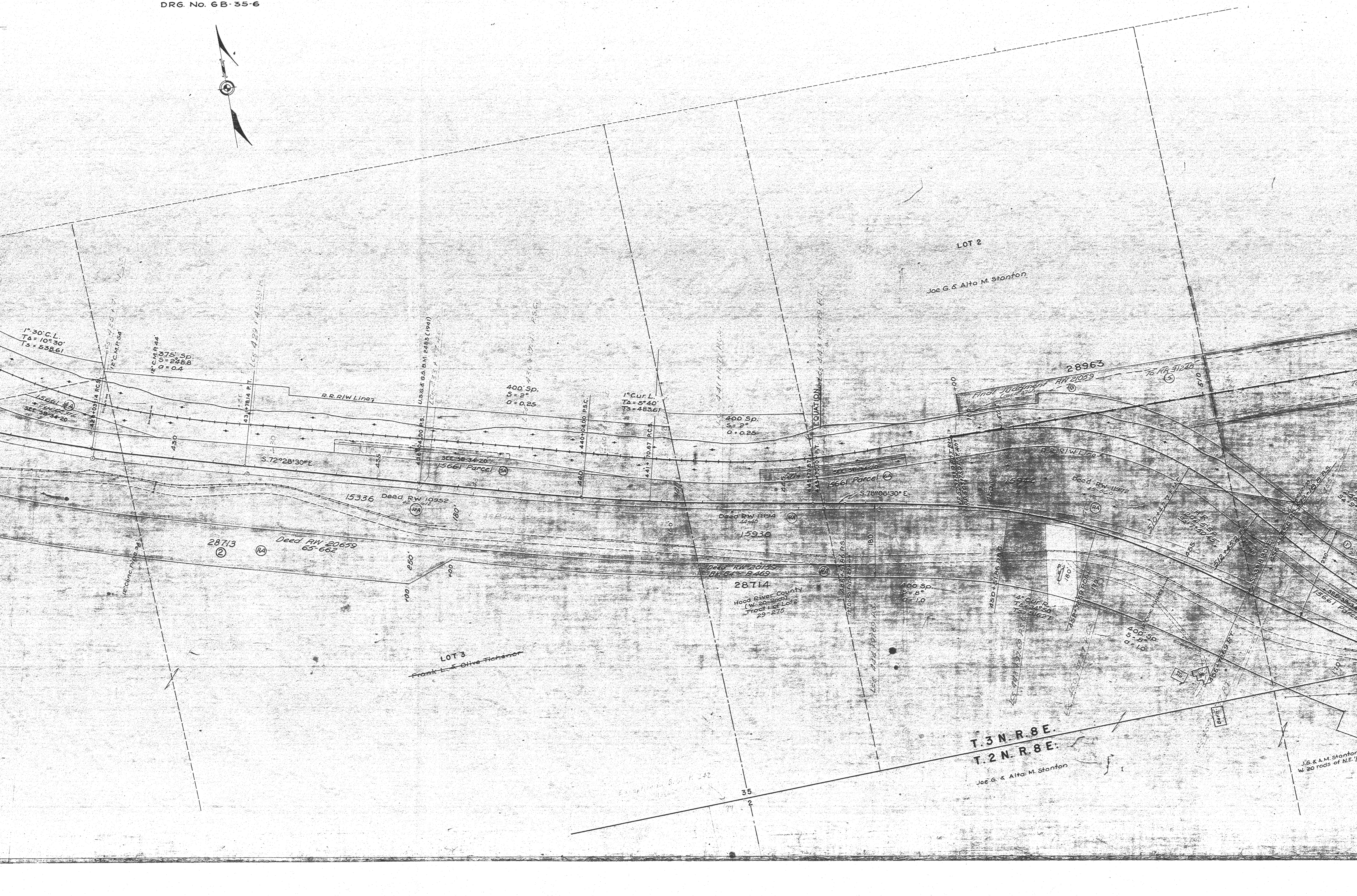
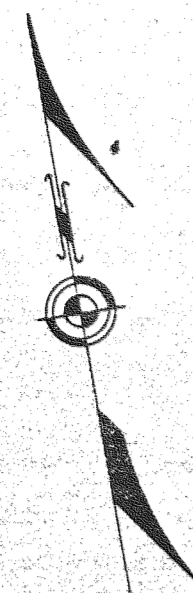
100

100









1°30' C.L.  
TA = 10°30'  
Ts = 538.61

R.C.M.P. 244  
375' Sp.  
S = 298.8  
Q = 0.4

15661 Parcel  
SEE 38-34-20

431+78.14 P.T. L.S. 429 / 41.331

R.R. R/W Line

U.S.G.S. B.M. 2485 (1941)  
225+33.7

400 Sp.  
S = 2°  
Q = 0.25

1° Cur. L.  
TA = 5°40'  
Ts = 483.61

400 Sp.  
S = 2°  
Q = 0.25

S.72°28'30" E

15336 Deed R/W 19952

SEE 38-34-20  
15661 Parcel

440+04.00 P.S.C.  
440

441+70.87 P.C.S.

Deed R/W 11194  
11-15  
15930

15661 Parcel  
SEE 38-34-20

S.78°08'30" E

Deed R/W 11972  
15-20

28713

Deed R/W 20659  
65-662

100'  
250'

100'

28714  
Hood River County  
W. 20 Rods  
Tract Lot 102  
29-215

700 Sp.  
S = 8°  
Q = 1.0

1° Cur. R.  
TA = 14°50'  
Ts = 166.27

400 Sp.  
S = 8°  
Q = 1.0

LOT 3  
Frank L. & Olive Fitchner

T.3 N. R.8 E.

T.2 N. R.8 E.

Joe G. & Alta M. Stanton

J.S. & A.M. Stanton  
W. 20 rods of N.E. 1/4

35  
2



LOT 1

Joseph & Eva E. Thurner  
Leif & Arne Knutsen  
54-286  
38098

LOT 4  
U. Pac. R.R.

WYETH

LOT 3  
Union Pacific R.

PROPOSED RAILROAD RELOCATION

28964

Final Judgment RW 21060  
Canc. 3-27-54

5.86° 40' 45" E. 54.14

TO RR 31248

See File RR 619 For RR Agreement  
38098

R.R. Rev.  
8 ch. SP  
S-1002  
U.P. TAMPON

19460  
Leased to July 31, 1957  
Stock Pile Site  
See RR 5-306  
RR 404  
Cancelled 9-2-58

R.R. Rev.  
0° 58' 30" R.  
TA = 9° 37' 15"  
TS = 614.56

R.R.  
7510 CL  
TA = 73° 17' 30"  
SI = 731.73  
TS = 795.93

4" CUL.  
TA = 42° 20'  
TS = 807.21

24567

15943  
Deed RW 11317  
44-297

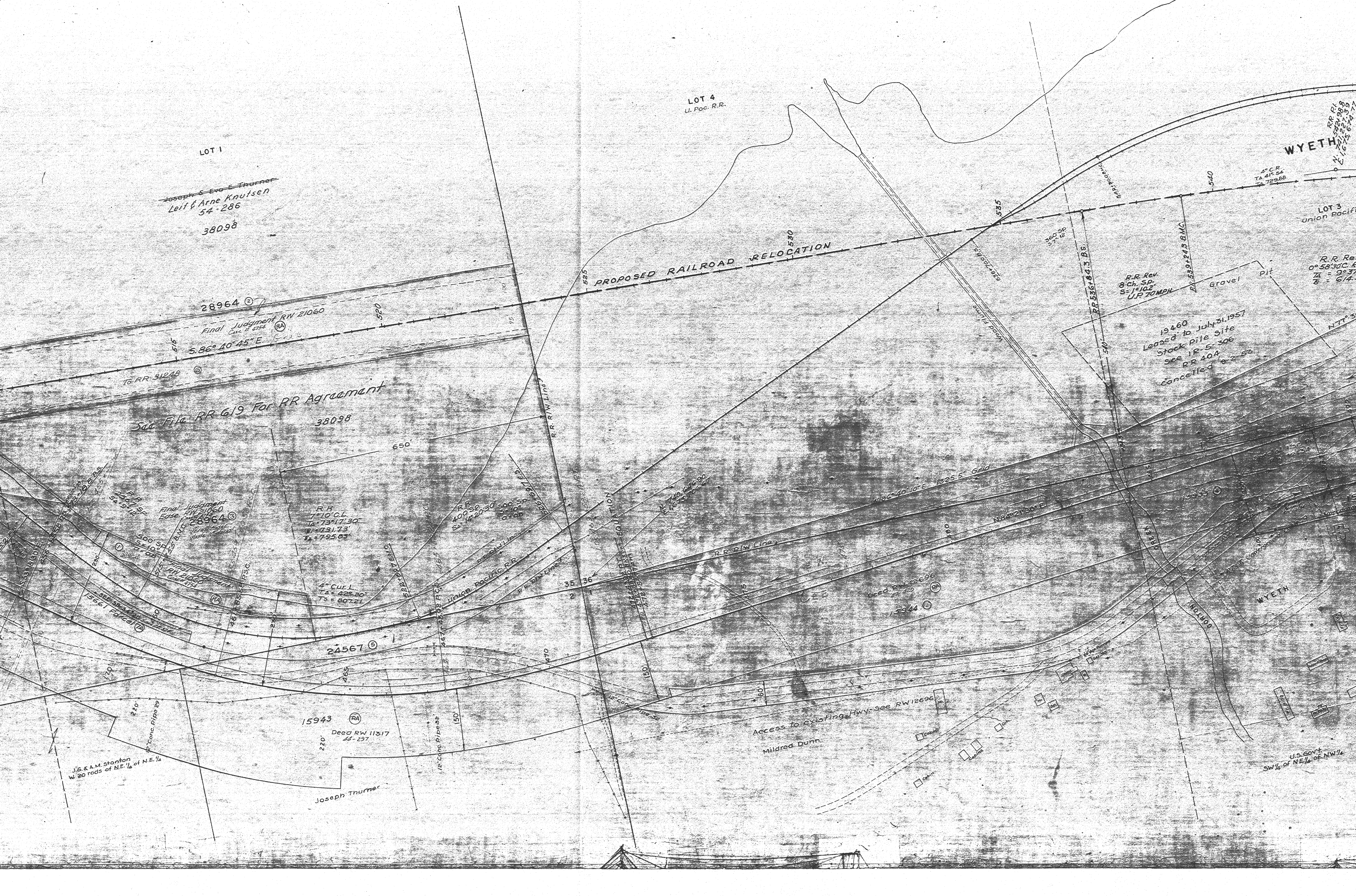
Joseph Thurner

Access to Existing Hwy. See RW 12696

Mildred Dunn

U.S. GOVT.  
SW 1/4 of NE 1/4 of NW 1/4

J.E. & A.M. Stanton  
W. 20 rods of N.E. 1/4 of N.E. 1/4







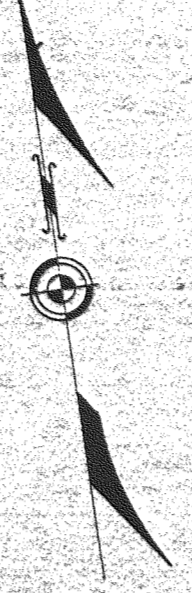






I for R.R. Encroachment Map

C O L U M B I A



See File RR 619 for RR Agreement

Sold to  
O.W.R. & N. Co.  
Under RR 374  
67-251

HERMAN SUHL  
N 78° 44' 30" E

N 78° 56' 30" E

Govt Approval RW 12696

LOT 3  
Walter H. Suhl  
Deed RW 11345  
44-3/6

LOT 2  
Walter H. Suhl  
Deed RW 11345  
All of Lot 4, Sec. 31, South of Highway  
All of Lots 2 & 3, Sec. 6.

*Handwritten note:*  
The above described parcels were well known to the undersigned and were shown to the undersigned by the fence which surrounds the parcels and the same were well known to the undersigned.

U.S. Govt. Parcel 6

SEE 58-34-22  
Easement RR 382

5933

15945

15945

LOT 4

Mildred Dunn

T. 3 N  
T. 2 N  
Deed RW 12696

Best Capital Ground  
N 74° 08' 31" E  
E 1,679,000' 51" S

2° C. L.  
TA 23° 00'  
TS 76720

(R.R. Rev.)  
TA 23° 21'  
TS 80255

(R.R. Rev.)  
TA 20° 30'  
TS 94516

R. B. E.  
R. R. E.

36  
31

67

LO



A R I V E R

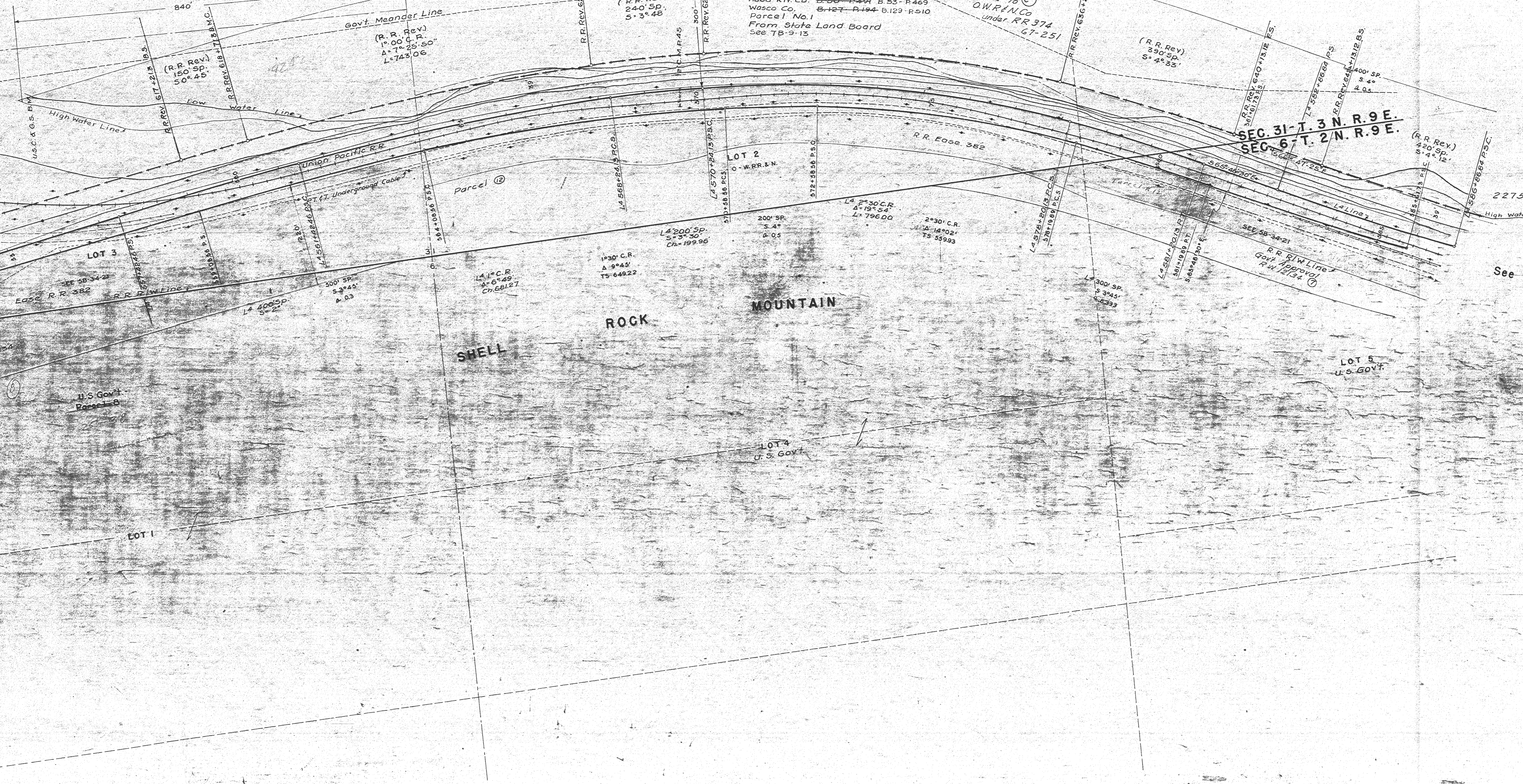
See 5B-34-21 for R.R. Encroachment Map

(R.R. Rev.)  
T<sub>1</sub> 34°28'05"  
T<sub>2</sub> 1317.04  
T<sub>3</sub> 1033.56

Deed RW 14392  
Hood Riv. Co. B-50 P-491 B-53-P-469  
Wasco Co. B-127 P-194 B-129-P-510  
Parcel No. 1  
From State Land Board  
See 7B-9-13

Sold to  
O.W.R.F.N. Co.  
Under RR 374  
67-251

Lot 1



SEC. 31-T. 3 N. R. 9 E.  
SEC. 6-T. 2 N. R. 9 E.

22753

See 6B

LOT 5  
U.S. GOVT

LOT 4  
U.S. GOVT

SHELL

ROCK  
MOUNTAIN

Parcel 12

LOT 2  
O.W.R.F.N.

LOT 3

LOT 1

U.S. Govt  
Poss.

SEE 5B-34-21  
Eas. R.R. 382

High Water Line

Low Water Line

Govt. Meander Line

(R.R. Rev.)  
1°00' C.R.  
A=7°25'50"  
L=743.06

1°30' C.R.  
A=6°49'  
TS=649.22

L=200' SP.  
S=3°30'  
Ch=199.96

200' SP.  
S=4°  
A=05

L=2°30' C.R.  
A=19°54'  
L=796.00

2°30' C.R.  
A=14°02'  
TS=559.93

L=300' SP.  
S=3°45'  
L=833

SEE 5B-34-21  
R.R. RIW Line  
Govt. Approval  
R.W. 12134

(R.R. Rev.)  
420' SP.  
S=4°12'

(R.R. Rev.)  
390' SP.  
S=4°35'

(R.R. Rev.)  
2°20' C.R.  
A=17°56'15"  
L=768.75

(R.R. Rev.)  
240' SP.  
S=3°48'

840'

(R.R. Rev.)  
150' SP.  
S=0°45'

R.R. Rev. 617+213 B.M.C.

R.R. Rev. 618+718 B.M.C.

R.R. Rev. 656+1437 E.M.C.

R.R. Rev. 628+1437 B.M.C.

P.C.M.P. 45

R.R. Rev. 656+2312 E.M.C.

R.R. Rev. 640+1312 E.S.

L=392+2687 P.S.

R.R. Rev. 644+1312 B.S.

400' SP.  
S=4°  
A=05

22753

See 6B

LOT 5  
U.S. GOVT

LOT 4  
U.S. GOVT

SHELL

ROCK  
MOUNTAIN

Parcel 12

LOT 2  
O.W.R.F.N.

LOT 3

LOT 1

U.S. Govt  
Poss.

SEE 5B-34-21  
Eas. R.R. 382

High Water Line

Low Water Line

Govt. Meander Line

(R.R. Rev.)  
1°00' C.R.  
A=7°25'50"  
L=743.06

1°30' C.R.  
A=6°49'  
TS=649.22

L=200' SP.  
S=3°30'  
Ch=199.96

200' SP.  
S=4°  
A=05

L=2°30' C.R.  
A=19°54'  
L=796.00

2°30' C.R.  
A=14°02'  
TS=559.93

L=300' SP.  
S=3°45'  
L=833

SEE 5B-34-21  
R.R. RIW Line  
Govt. Approval  
R.W. 12134

(R.R. Rev.)  
420' SP.  
S=4°12'

(R.R. Rev.)  
390' SP.  
S=4°35'

(R.R. Rev.)  
2°20' C.R.  
A=17°56'15"  
L=768.75

(R.R. Rev.)  
240' SP.  
S=3°48'

840'

(R.R. Rev.)  
150' SP.  
S=0°45'

R.R. Rev. 617+213 B.M.C.

R.R. Rev. 618+718 B.M.C.

R.R. Rev. 656+1437 E.M.C.

R.R. Rev. 628+1437 B.M.C.

P.C.M.P. 45

R.R. Rev. 656+2312 E.M.C.

R.R. Rev. 640+1312 E.S.

L=392+2687 P.S.

R.R. Rev. 644+1312 B.S.

400' SP.  
S=4°  
A=05

22753

See 6B

LOT 5  
U.S. GOVT

LOT 4  
U.S. GOVT

SHELL

ROCK  
MOUNTAIN

Parcel 12

LOT 2  
O.W.R.F.N.

LOT 3

LOT 1

U.S. Govt  
Poss.

SEE 5B-34-21  
Eas. R.R. 382

High Water Line

Low Water Line

Govt. Meander Line

(R.R. Rev.)  
1°00' C.R.  
A=7°25'50"  
L=743.06

1°30' C.R.  
A=6°49'  
TS=649.22

L=200' SP.  
S=3°30'  
Ch=199.96

200' SP.  
S=4°  
A=05

L=2°30' C.R.  
A=19°54'  
L=796.00

2°30' C.R.  
A=14°02'  
TS=559.93

L=300' SP.  
S=3°45'  
L=833

SEE 5B-34-21  
R.R. RIW Line  
Govt. Approval  
R.W. 12134

(R.R. Rev.)  
420' SP.  
S=4°12'

(R.R. Rev.)  
390' SP.  
S=4°35'

(R.R. Rev.)  
2°20' C.R.  
A=17°56'15"  
L=768.75

(R.R. Rev.)  
240' SP.  
S=3°48'

840'

(R.R. Rev.)  
150' SP.  
S=0°45'

R.R. Rev. 617+213 B.M.C.

R.R. Rev. 618+718 B.M.C.

R.R. Rev. 656+1437 E.M.C.

R.R. Rev. 628+1437 B.M.C.

P.C.M.P. 45

R.R. Rev. 656+2312 E.M.C.

R.R. Rev. 640+1312 E.S.

L=392+2687 P.S.

R.R. Rev. 644+1312 B.S.

400' SP.  
S=4°  
A=05

22753

See 6B

LOT 5  
U.S. GOVT

LOT 4  
U.S. GOVT

SHELL

ROCK  
MOUNTAIN

Parcel 12

LOT 2  
O.W.R.F.N.

LOT 3

LOT 1

U.S. Govt  
Poss.

SEE 5B-34-21  
Eas. R.R. 382

High Water Line

Low Water Line

Govt. Meander Line

(R.R. Rev.)  
1°00' C.R.  
A=7°25'50"  
L=743.06

1°30' C.R.  
A=6°49'  
TS=649.22

L=200' SP.  
S=3°30'  
Ch=199.96

200' SP.  
S=4°  
A=05

L=2°30' C.R.  
A=19°54'  
L=796.00

2°30' C.R.  
A=14°02'  
TS=559.93

L=300' SP.  
S=3°45'  
L=833

SEE 5B-34-21  
R.R. RIW Line  
Govt. Approval  
R.W. 12134

(R.R. Rev.)  
420' SP.  
S=4°12'

(R.R. Rev.)  
390' SP.  
S=4°35'

(R.R. Rev.)  
2°20' C.R.  
A=17°56'15"  
L=768.75

(R.R. Rev.)  
240' SP.  
S=3°48'

840'

(R.R. Rev.)  
150' SP.  
S=0°45'

R.R. Rev. 617+213 B.M.C.

R.R. Rev. 618+718 B.M.C.

R.R. Rev. 656+1437 E.M.C.

R.R. Rev. 628+1437 B.M.C.

P.C.M.P. 45

R.R. Rev. 656+2312 E.M.C.

R.R. Rev. 640+1312 E.S.

L=392+2687 P.S.

R.R. Rev. 644+1312 B.S.

400' SP.  
S=4°  
A=05

22753

See 6B

LOT 5  
U.S. GOVT

LOT 4  
U.S. GOVT

SHELL

ROCK  
MOUNTAIN

Parcel 12

LOT 2  
O.W.R.F.N.

LOT 3

LOT 1

U.S. Govt  
Poss.

SEE 5B-34-21  
Eas. R.R. 382

High Water Line

Low Water Line

Govt. Meander Line

(R.R. Rev.)  
1°00' C.R.  
A=7°25'50"  
L=743.06

1°30' C.R.  
A=6°49'  
TS=649.22

L=200' SP.  
S=3°30'  
Ch=199.96

200' SP.  
S=4°  
A=05

L=2°30' C.R.  
A=19°54'  
L=796.00

2°30' C.R.  
A=14°02'  
TS=559.93

L=300' SP.  
S=3°45'  
L=833

SEE 5B-34-21  
R.R. RIW Line  
Govt. Approval  
R.W. 12134

(R.R. Rev.)  
420' SP.  
S=4°12'

(R.R. Rev.)  
390' SP.  
S=4°35'

(R.R. Rev.)  
2°20' C.R.  
A=17°56'15"  
L=768.75

(R.R. Rev.)  
240' SP.  
S=3°48'

840'

(R.R. Rev.)  
150' SP.  
S=0°45'

R.R. Rev. 617+213 B.M.C.

R.R. Rev. 618+718 B.M.C.

R.R. Rev. 656+1437 E.M.C.

R.R. Rev. 628+1437 B.M.C.

P.C.M.P. 45

R.R. Rev. 656+2312 E.M.C.

R.R. Rev. 640+1312 E.S.

L=392+2687 P.S.

R.R. Rev. 644+1312 B.S.

400' SP.  
S=4°  
A=05

22753

See 6B

LOT 5  
U.S. GOVT

LOT 4  
U.S. GOVT

SHELL

ROCK  
MOUNTAIN

Parcel 12

LOT 2  
O.W.R.F.N.

LOT 3

LOT 1

U.S. Govt  
Poss.

SEE 5B-34-21  
Eas. R.R. 382

High Water Line

Low Water Line

Govt. Meander Line

(R.R. Rev.)  
1°00' C.R.  
A=7°25'50"  
L=743.06

1°30' C.R.  
A=6°49'  
TS=649.22

L=200' SP.  
S=3°30'  
Ch=199.96

200' SP.  
S=4°  
A=05

L=2°30' C.R.  
A=19°54'  
L=796.00

2°30' C.R.  
A=14°02'  
TS=559.93

L=300' SP.  
S=3°45'  
L=833

SEE 5B-34-21  
R.R. RIW Line  
Govt. Approval  
R.W. 12134

(R.R. Rev.)  
420' SP.  
S=4°12'

(R.R. Rev.)  
390' SP.  
S=4°35'

(R.R. Rev.)  
2°20' C.R.  
A=17°56'15"  
L=768.75

(R.R. Rev.)  
240' SP.  
S=3°48'

840'

(R.R. Rev.)  
150' SP.  
S=0°45'

R.R. Rev. 617+213 B.M.C.

R.R. Rev. 618+718 B.M.C.

R.R. Rev. 656+1437 E.M.C.

R.R. Rev. 628+1437 B.M.C.

P.C.M.P. 45

R.R. Rev. 656+2312 E.M.C.

R.R. Rev. 640+1312 E.S.

L=392+2687 P.S.

R.R. Rev. 644+1312 B.S.

400' SP.  
S=4°  
A=05

22753

See 6B

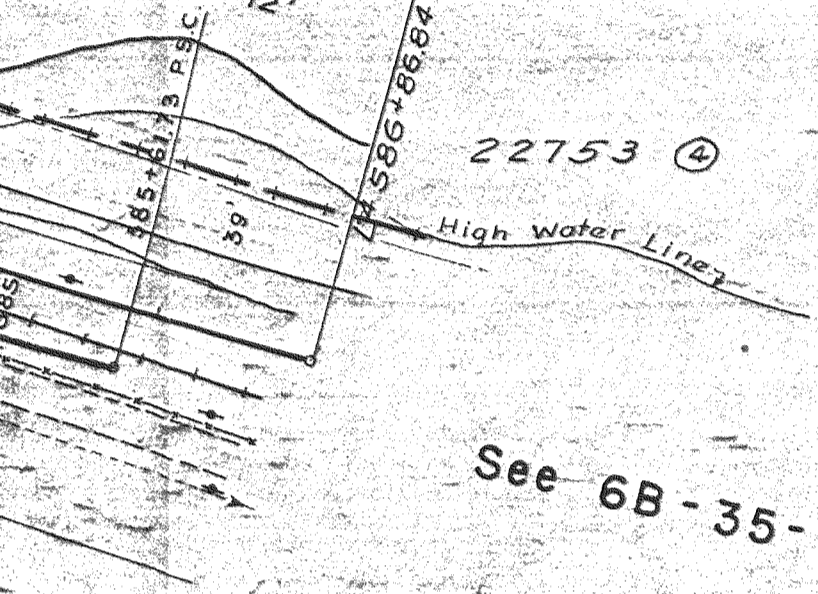
LOT 5  
U.S. GOVT

LOT 4  
U.S. GOVT



E.  
E.

(R.R. Rev.)  
420' Sp.  
S-4° 12'



See 6B-35-7 →

CASCADE LOCKS - VIENTO SEC.  
PART 2 of 3 PARTS  
DRG. NO. 6B-35-6

PART 2 of 3 PARTS  
CASCADE LOCKS - VIENTO SEC.