

CASCADE LOCKS - VIENTO SECTION
SEC. 33
COLUMBIA RIVER
HWY.
LOC. LINE
PART 2 OF 3 PARTS
STRAS
E 70 S
TARS
1" = 100'
6B-32-e

OREGON STATE HIGHWAY DEPARTMENT
Located Line

CASCADE LOCKS - VIENTO SECTION COLUMBIA RIVER HIGHWAY

HOOD RIVER COUNTY

Scale 1 inch = 100 feet

Traced by G.E.H. August, 1949
Retraced by J.A.R. August, 1968

Bearings - As Shown

DRG. NO. 6B-35-6

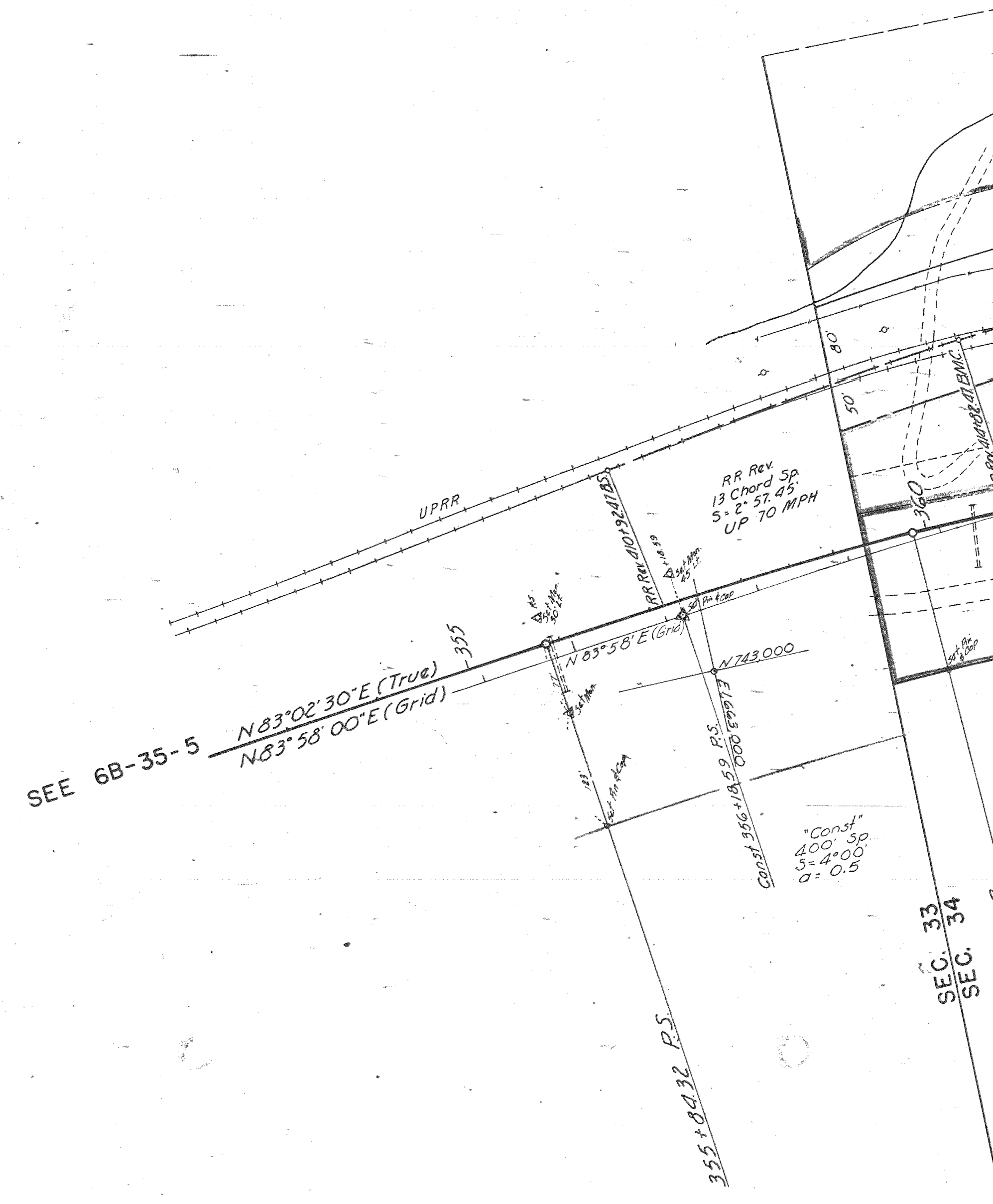
PART 2 OF 3 PARTS

ACCESS CONTROL LINE
Survey Map Completed Aug. 1969



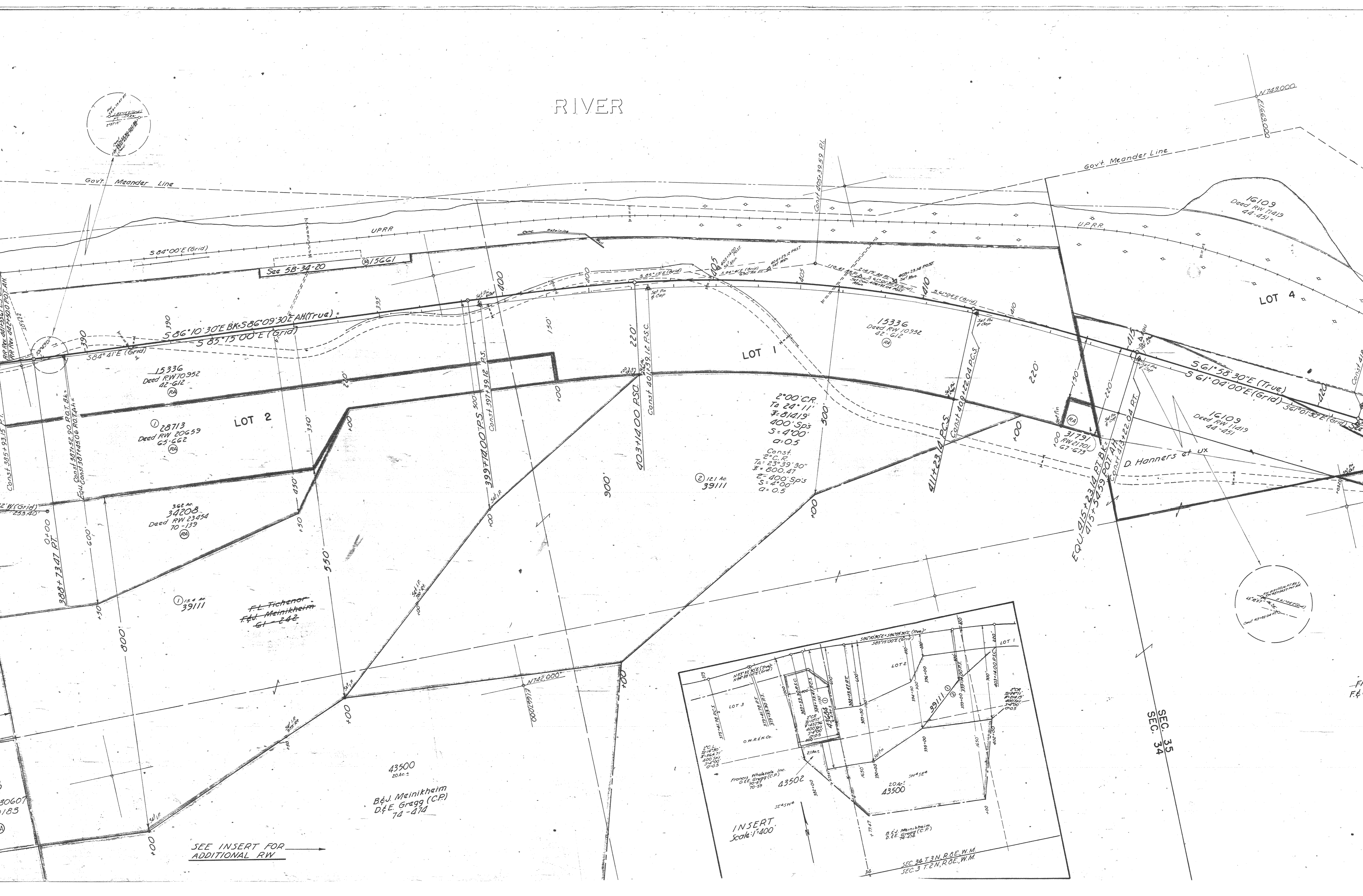
Col. River Hwy 1968
Loc line
Shell road → see line 33/34
3V8E

D-180N-68



SEC. 33
SEC. 34

RIVER



See 5B-34-20 @15661

15336
Deed RW 10392
42-612

28713
Deed RW 20659
65-662

34203
Deed RW 23454
70-139

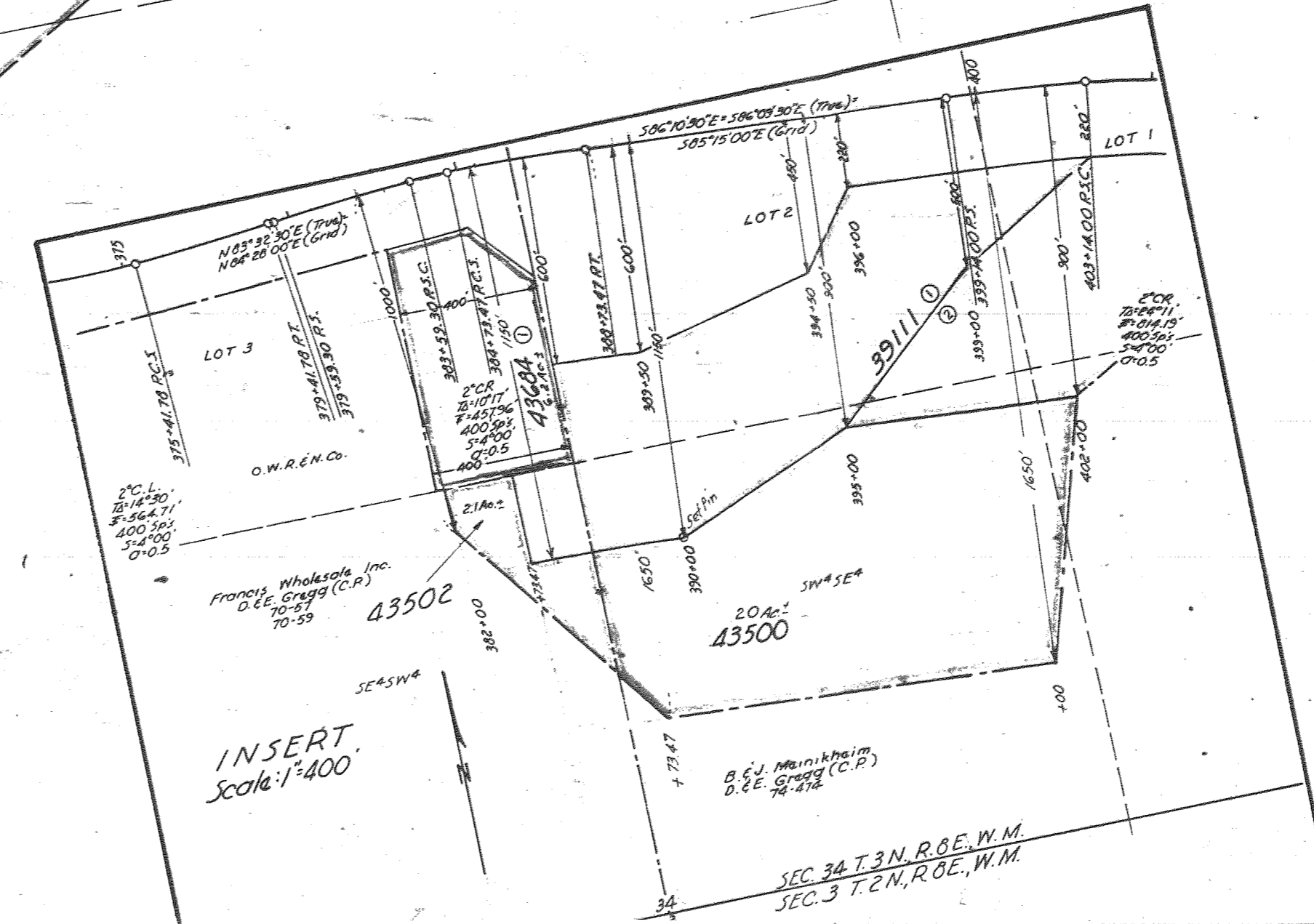
15.6 Ac
39111

F.L. Fitchner
F&E Meinikheim
61-242

43500
20 Ac ±
B&J Meinikheim
D&E Gregg (C.P.)
74-474

2°00' C.R.
To 24° 11'
7 = 81419'
400' Sp3
S = 4'00"
a = 0.5
Const.
2° C.R.
To 23° 39' 30"
7 = 800.47
2 = 400 Sp3
S = 4'00"
a = 0.5

12.1 Ac
39111

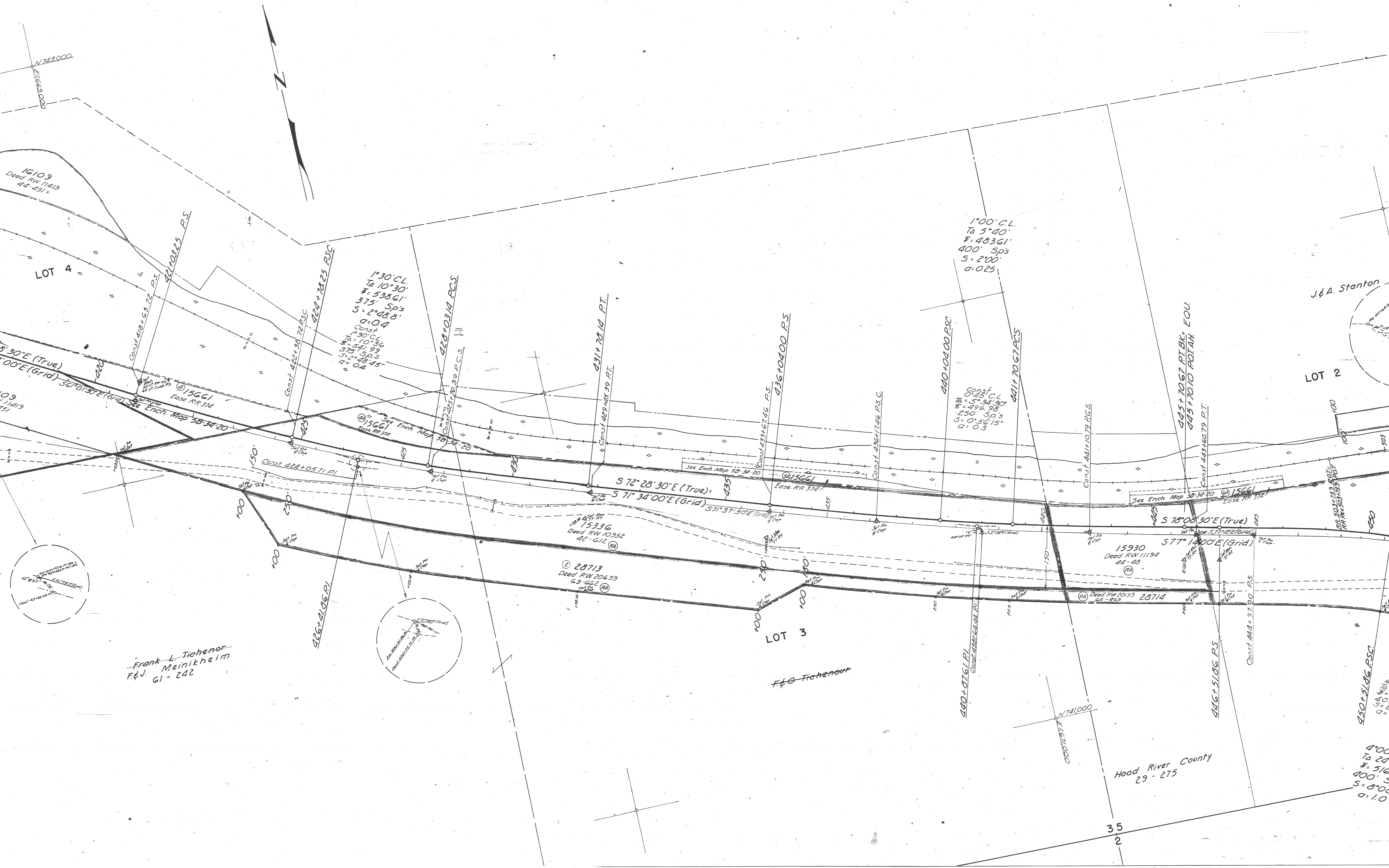


INSERT
Scale: 1"=400'

SEE INSERT FOR
ADDITIONAL RW

SEC. 35
SEC. 34

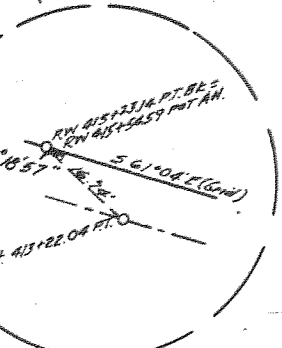
SEC. 34 T. 3 N. R. 8 E. W. M.
SEC. 3 T. 2 N. R. 8 E. W. M.



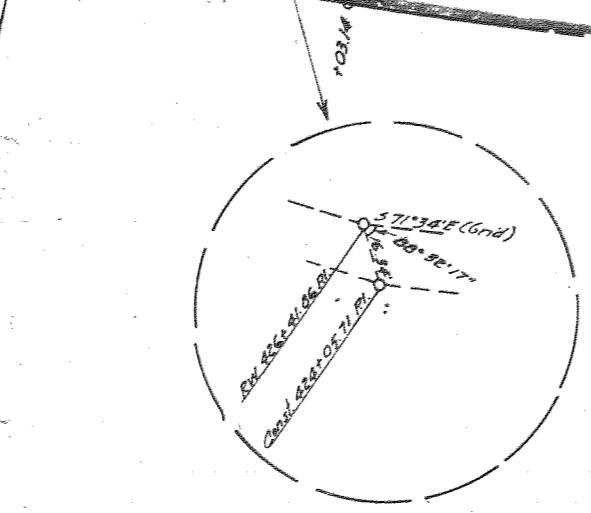
16109
Deed RW 11419
44-451

LOT 4

15661
EASE RR 374
See Ench. Map 5B-34-20



1° 30' C.L.
Ta 10° 30'
F = 538.61'
375' Sp's
S = 2° 48.8'
a = 0.04
Const. 422+98.72 P.S.
424+72.25 P.S.



431+70.14 P.T.

S 72° 28' 30" E (True)
S 71° 34' 00" E (Grid)

28713
Deed RW 20659
65-642 (RA)

LOT 3

F.L.O. Tichenor

1° 00' C.L.
Ta 5° 40'
F = 483.61'
400' Sp's
S = 2° 00'
a = 0.25

440+04.00 P.S.

Const. 425 C.L.
Ta 5° 34' 30"
F = 496.98'
250' Sp's
S = 0° 56' 15"
a = 0.3

N 74° 10' 00"
E 1667.000

445+70.67 P.T.BK. EQU
445+70.10 P.T.AH. EQU

S 78° 08' 30" E (True)
S 77° 12' 00" E (Grid)

15930
Deed RW 11194
44-48 (RA)

28714
Deed RW 20153
64-462 (RA)

446+51.06 P.S.

Hood River County
29-275

J. & A. Stanton

LOT 2

RR 501+71.9 P.T.
RR 501+71.9 P.T.

420+51.86 P.S.

400'
Ta 24°
F = 516'
400' Sp's
S = 8° 00'
a = 1.0

T.3N. R.8E. W.M.
6B-35-6

Govt. Meander Line

N 742,000
E 1,623,000
LOT 1

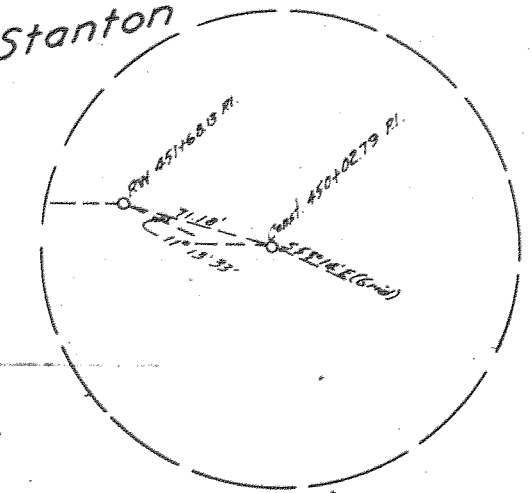
J. & E. Turner
L. & A. Knutsen
54-286

38098
Final Judg. RW
P-1192
5751

U.P.R.R.
LOT 4

J. & A. Stanton

LOT 2



28963
Fin. Judg. RW 21059
4765

28964
Fin. Judg. RW 21060
4754

See File RR 619 For RR Agreement

15942
Deed RW 11972
45-360

28964
Fin. Judg. RW 21060
4754

4°00' CL.
To 42°20'
F = 807.21'
500' Sp's
S = 10'00'
a = 0.8

28964
Fin. Judg. RW 21060
4754

3536

15944
Deed RW 12696
47-425

4°00' CL.
To 24°50'
F = 516.27'
400' Sp's
S = 8'00'
a = 1.0

T.3N. R.8E. W.M.
T.2N. R.8E. W.M.

J. & A. Stanton

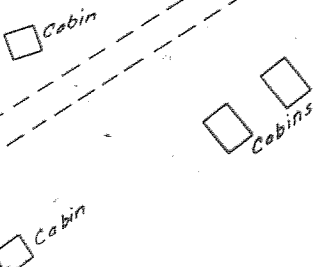
15943
Deed RW 11972
44-297

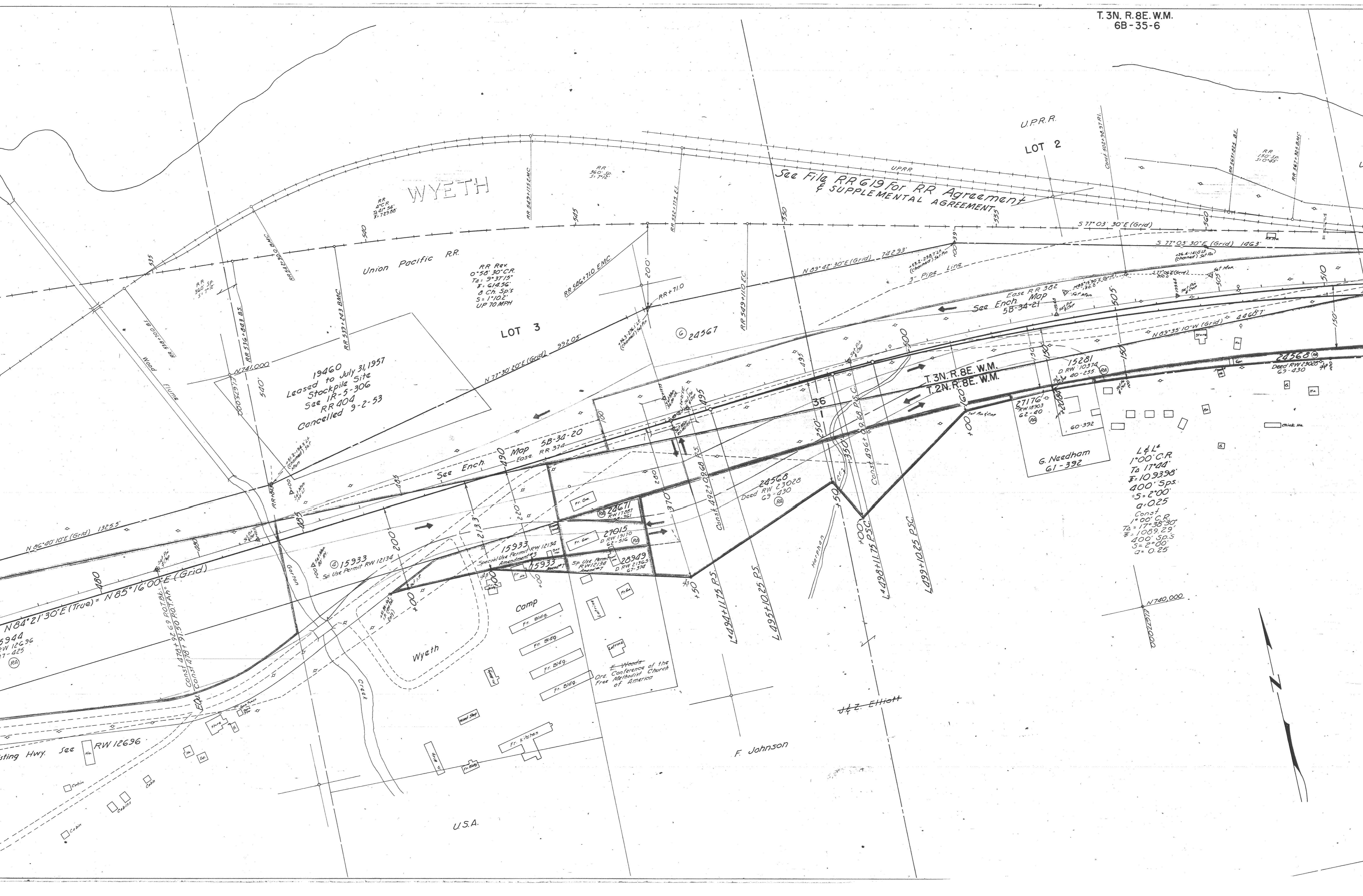
J. Turner

M. Dunn

RW 12696

PT & L Underground
Cable
Access to existing Hwy. See





WYETH

UPRR
LOT 2

See File RR 619 for RR Agreement
& SUPPLEMENTAL AGREEMENT

Union Pacific RR

RR Rev
0°50'30" C.R.
Ta: 9°37'15"
F: 614.561
S: 1410.2'
UP 70 MPH

LOT 3

19460
Leased to July 31, 1957
Stockpile Site
See IR 5-306
RR 404
Cancelled 9-2-53

T. 3N. R. 8E. W.M.
T. 2N. R. 8E. W.M.

G. Needham
61-392

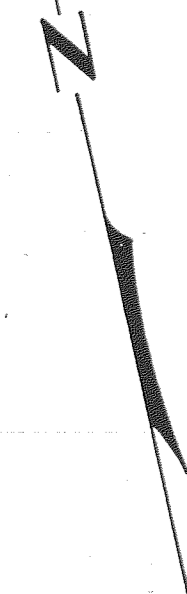
L&L
1°00' C.R.
Ta 17°44'
F: 109398'
400' Sp's
S: 2°00'
Q: 0.25
Const
1°00' C.R.
Ta 17°58'30"
F: 108929'
400' Sp's
S: 2°00'
Q: 0.25

Wyeth
Camp
Fr. Bldg.
Fr. Bldg.
Fr. Bldg.
Fr. Bldg.
Woods
Ore. Conference of the
Free Methodist Church
of America

F. Johnson

U.S.A.

J. Z. Ehlert



See 5B-34-21 For R.R. Ench. Map

UPRR

LOT 1

Lake

M. Morgan et ux

T.2N.R.8E.W.M.
T.2N.R.9E.W.M.

L
2°00' C.L.
TΔ 23°09'
F= 78720'
400' Spx
S= 4°00'
a=0.5

L
2°00' C.L.
TΔ 23°50'
F= 80504'
400' Spx
S= 4°00'
a=0.5

3631
16
Pd. Sec. Cor.
Basis Plat. #
Cont. Mon.

15167
RW 10541
41-132

15167A
RW 10521
45-367

RR
1°12' C.L.
TΔ 6°00'30"
F= 37654'

RR Rev
420' Sp
S= 4°12'

RR 5671-963 FOI BK = FOI Stationing
RR 573+350 ES AH = New Stationing
RR 573+8358 = New Stationing

RR
1°12' C.L.
TΔ 6°00'30"
F= 37654'

Const. 509+73.85 P.C.S

L 511+83.08 P.C.S

L 512+83.58 P.C.S

L 515+83.08 P.T.

516+83.58 P.T.

Const. 516+63.31 P.S.

L 517+83.29 P.S.

RR Rev 517+217.17 B.S.

518+77.99 P.S.

L 521+83.29 P.S.C.

522+77.99 P.S.C.

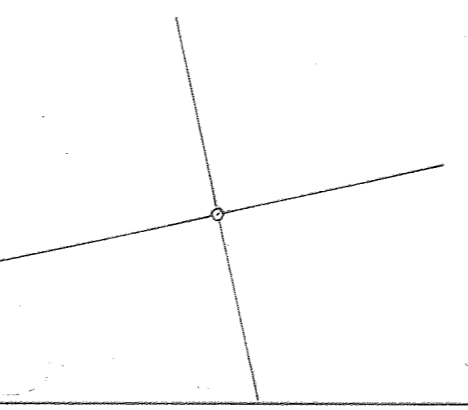
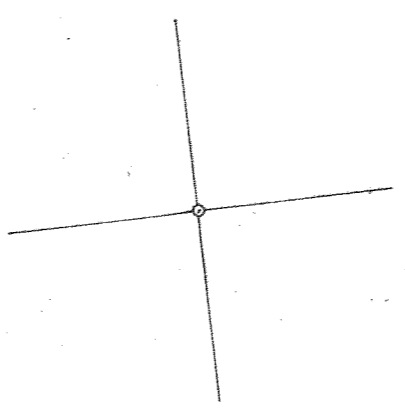
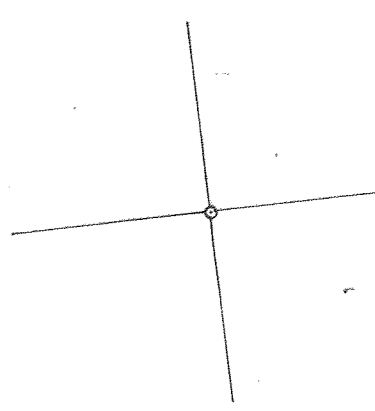
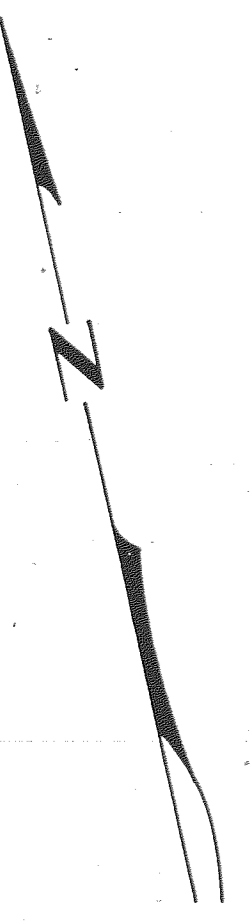
RR Rev 521+1717.17 B.M.C.

Const. 524+72.05 P.I.

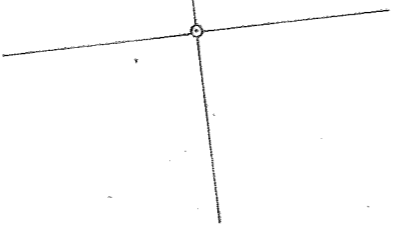
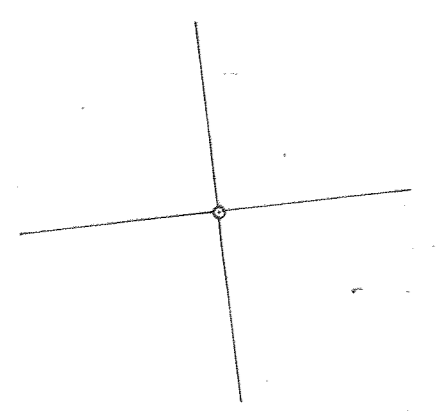
L 530+35.49 P.C.S

L 534+35.49 P.I.

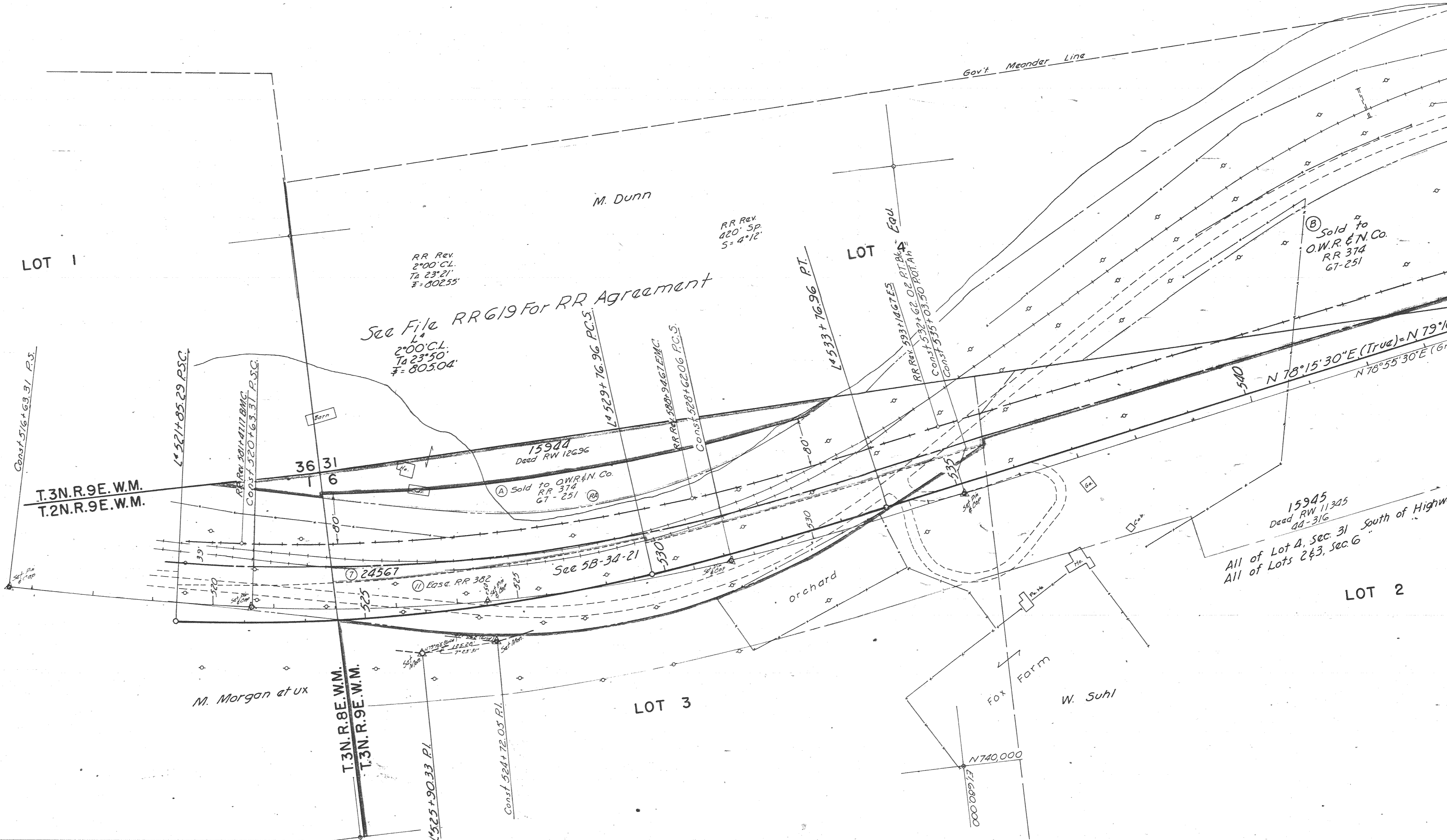
N 78°56'30" E (True)



T. 3N. R. 8E. W.M.
6B-35-6



N 741,000
E 16,000



LOT 1

LOT

LOT 2

M. Dunn

M. Morgan et ux

LOT 3

Fox Farm

W. Suhl

See File RR 619 For RR Agreement

RR REV
2°00' CL.
TA 23° 21'
F = 80255'

RR REV
420' SP
S = 4° 12'

2°00' CL.
TA 23° 50'
F = 80504'

15944
Deed RW 12696

(A) Sold to O.W.R. & N. Co.
RR 374
67-251

(B) Sold to
O.W.R. & N. Co.
RR 374
67-251

15945
Deed RW 11305
44-316
All of Lot 4, Sec. 31 South of Highway
All of Lots 2 & 3, Sec. 6

T. 3N. R. 9E. W.M.
T. 2N. R. 9E. W.M.

T. 3N. R. 8E. W.M.
T. 3N. R. 9E. W.M.

Const. 576 + 63.31 P.S.

L 521 + 85.29 P.S.C.

RR REV 201 + 411 B.M.C.
Const. 520 + 63.31 P.S.C.

L 529 + 76.96 P.C.S.

RR REV 588 + 946 E.M.C.
Const. 328 + 620.6 P.C.S.

L 533 + 76.96 P.T.

RR REV 931 + 167 E.S.
Const. 535 + 05.50 P.O.L.A.P.

540

N 70° 15' 30" E (True) = N 79° 15' 30" E
N 70° 55' 30" E (67)

Govt Meander Line

orchard

See 5B-34-21

24567

Esse. RR 302

L 525 + 90.33 P.L.

Const. 524 + 72.05 P.L.

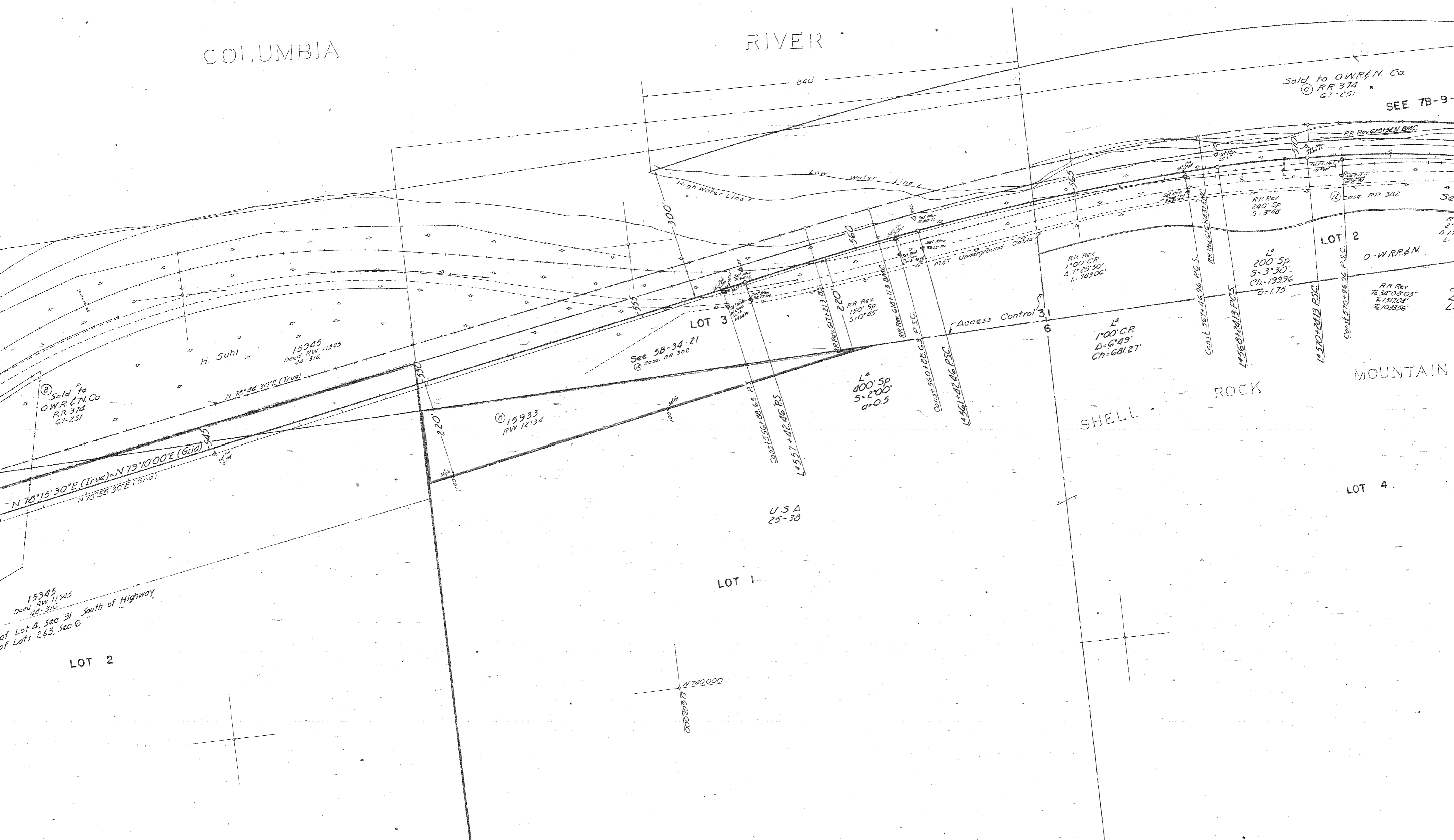
N 740,000
E 16,000

COLUMBIA

RIVER

Sold to O.W.R.R.N. Co. RR 374 67-251

SEE 7B-9-



H. Suhi

15945 Deed RW 11345 24-316

See 5B-34-21 @ Ease RR 302

15933 RW 12134

USA 25-38

15945 Deed RW 11345 24-316 of Lot 4, Sec. 31 South of Highway of Lots 2 & 3, Sec. 6

LOT 2

LOT 1

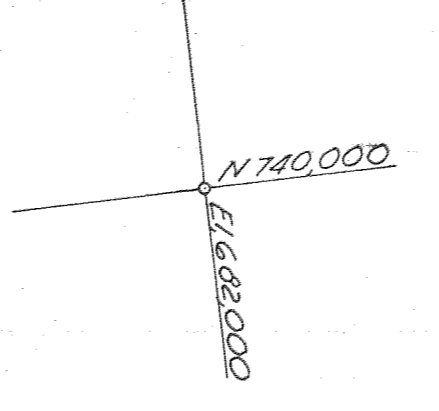
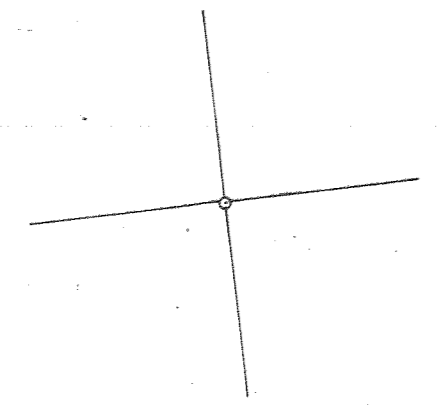
LOT 2

LOT 4

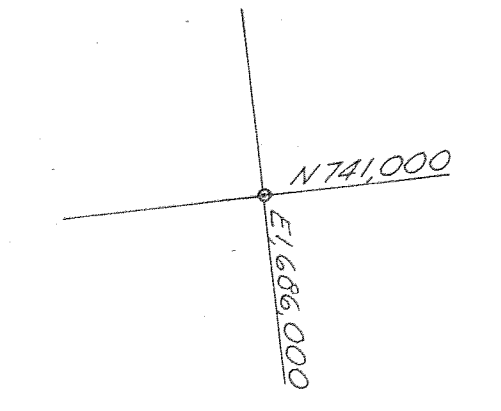
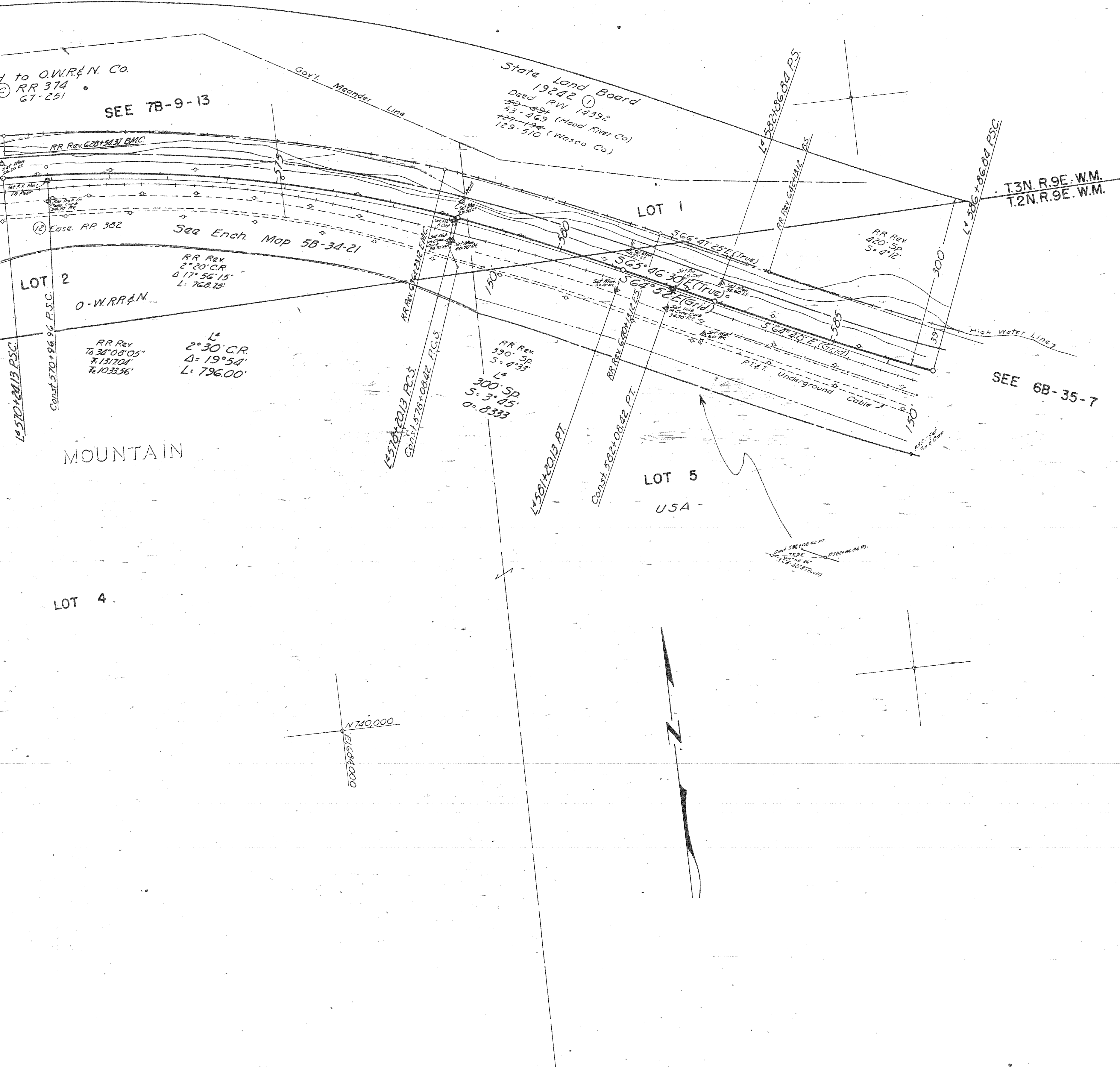
SHELL

ROCK

MOUNTAIN



See 5B-34-21 For R.R. Ench. Map



CASCADE LOCKS - VIEN
 COLUMIA RIVER HWY.
 HOOD RIVER COUNTY
 AUG. 1949 - RETRACED
 1" = 100'
 6B-35-6
 PART 2 OF 3 PARTS

CASCADE LOCKS - VIENTO SEC.

COLUMBIA RIVER HWY.

LOC. LINE

PART 5 OF 3 PARTS

1" = 100'

CB-32-e

CASCADE LOCKS - VIENTO SEC.

COLUMBIA RIVER HWY.

HOOD RIVER COUNTY

AUG. 1949 - RETRACED AUG. 1968

" = 100'

6B-35-6

PART 2 OF 3 PARTS

1968
AUG 28 10 40 AM '68

D-180A-68