

D-18M-13
C8

OREGON STATE HIGHWAY DEPARTMENT

Located Line

CASCADE LOCKS-VIENTO SECTION — COLUMBIA RIVER HIGHWAY

HOOD RIVER COUNTY

Scale 1 inch = 100 feet

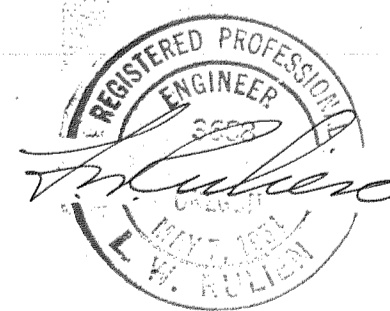
Traced by G.E.H. August, 1949
Refraced by J.A.R. July, 1968

Bearings - As Shown

DRG. NO. 6B-35-5

PART 1 OF 3 PARTS

ACCESS CONTROL LINE _____
Survey Map Completed Aug., 1969



T. 2 N. R. 7 E. W.M.
6B-35-5

LOT 7

LOT 10

Abandoned

SEE 3B-24-17 N. 63° 55' 30" E (True) =
N 64° 53' 00" E (Grid)

O.S.H.D.
O.S.H.D. Maint. Shed
Deed MS-52
IR-1-335

J.S. Miller et ux
63-265

F. Shortz et ux
63-258
To be sold
6-20-69

12

High School
School District No. 1

16562
E. Parker
RW 11259
44-163

15919
D. RW 11316
44-284

15604
RW 11456
44-493

15918
RW 11415
44-493

R. Miller et ux
32-70

15920
RW 11415
44-493

15919
Deed RW 11316
44-284

CASCADE

LOCKS

2° C.R.
T=10° 44'
F=46931'
S=4°
d=0.5

A. Lober
37-282
31-286

LOT 8

N 73° 00' 00" E
16400

Abandoned as State Highway Oct., 1952
A & R 228

Abandoned to City
A & R 228

Abandoned to County
A & R 228

LOT 1

LOT 8
Stubbs
#67175

15919

15919

LOT 9

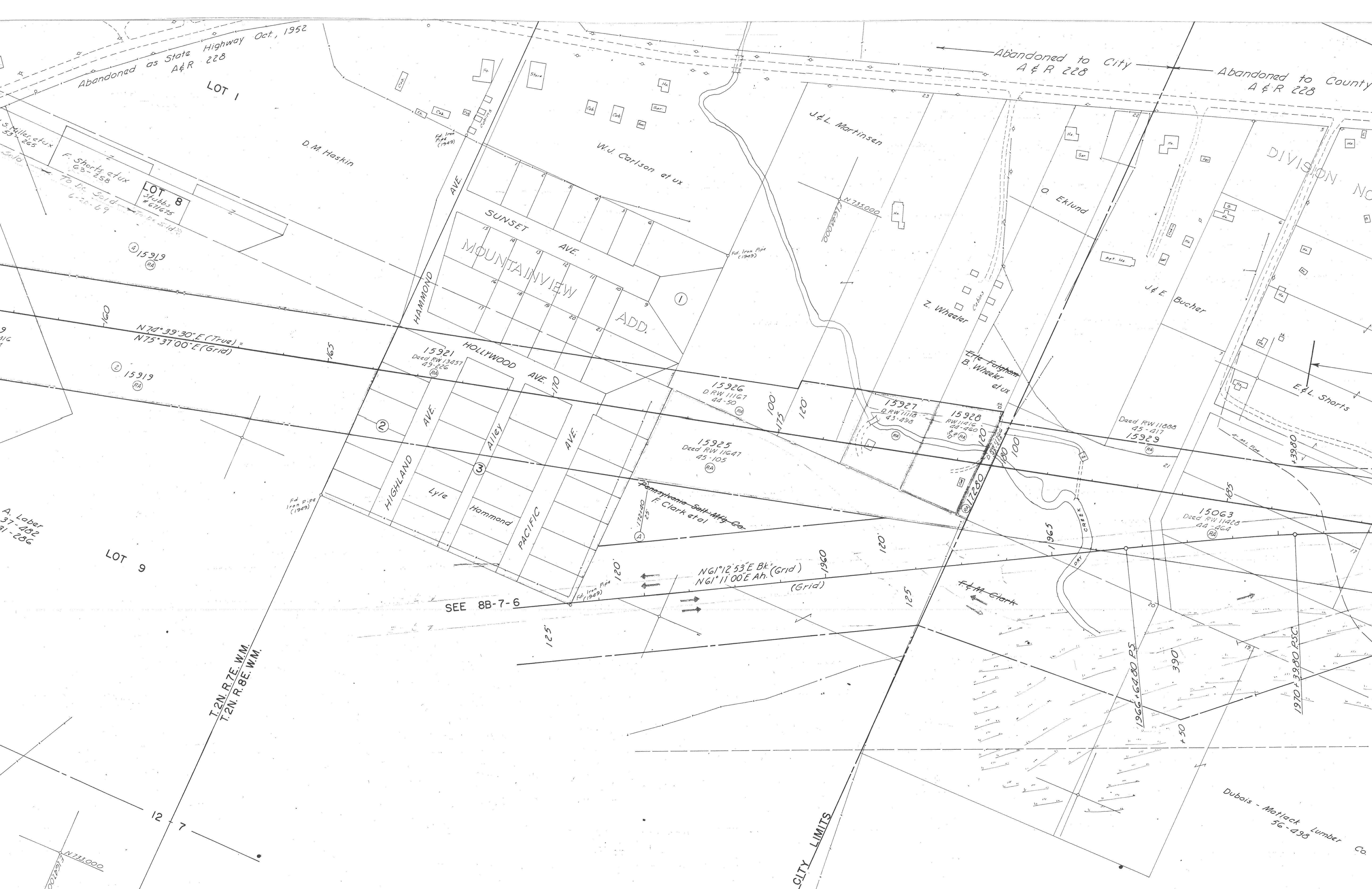
12 7

T.2N. R.7E. W.M.
T.2N. R.8E. W.M.

SEE 8B-7-6

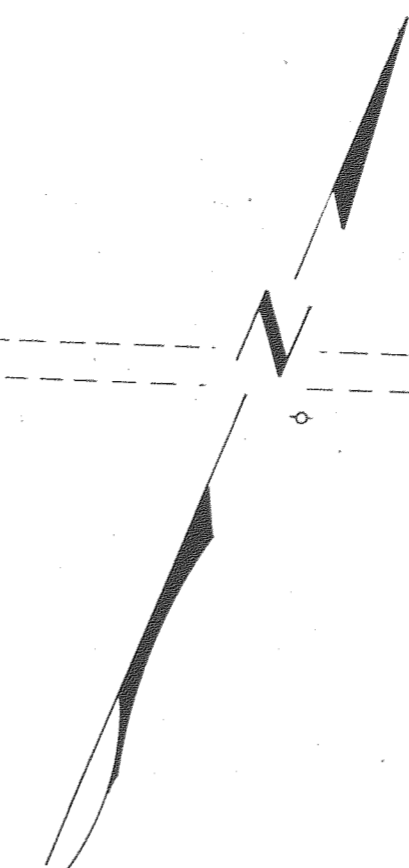
CITY LIMITS

Dubois - Motlock Lumber Co.
56-498



abandoned to County
A & R 228

DIVISION NO 2
SECS 6 & 7



1°30' C.R.
To 14°26'00"
± 671.35'
2 - 375' Sp's
5 - 2°48'45"
0-0.4

Bois - Motlock Lumber Co.
56-098

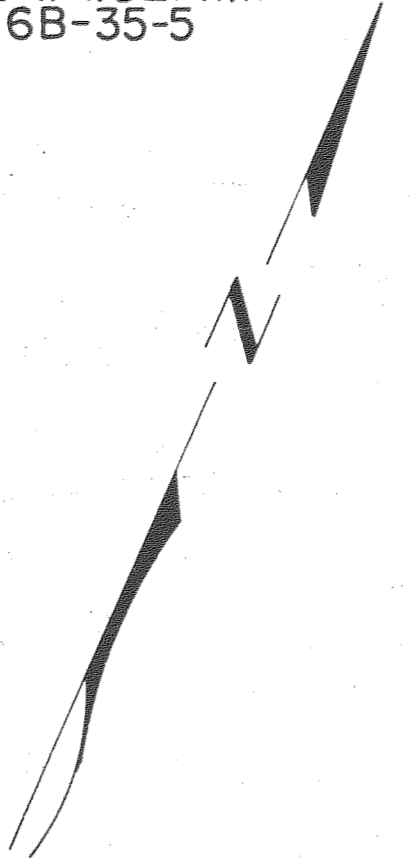
Sold to J.M. Burge
73-337

W. & E. McGlone
54-259

U.S.A.
27-88



T2N R8E W.M.
6B-35-5



See File RR 619 For RR Agreement

Part of Cascade Locks
31-111

RR Rev
12 Ch. Spiral
S = 2° 32' 06"

RR 30.5+10.54 ROT =
RR Rev 10.510.54 DT

308+70.54 B.M.C.

100' Sp
S = 5°
a = 0.5

Const.
500' Sp
S = 4° 19'
a = 0.5

Const. 266+15.00 P.O.Z. B.M. = E.O.U.
Const. 266+17.52 P.S. = M

28710
Fin. Judg. RW 21276
4819 (RA)

15661
Edge RR 370

28710
Fin. Judg. RW 21278
4819 (RA)

15937
Deed RW 11939
45-481 (RA)

15936
Deed RW 11389
44-365 (RA)

Sold to USA
RW 12134
52-72

N 70° 45' 33" E (Grid)

PT. & T. Underground Cable 7

Part of Cascade Locks
31-111

N 65° 46' 30" W (True)

28709
FJ RW 23485
4733 (RA)

N 25° 38' 35" E (Grid)

N 56° 32' 30" E (True) = N 57° 30" E (Grid)

28709
FJ RW 23485
4733 (RA)

City of Cascade Locks

RANGER'S STATION

J & C Douthitt et al

RR Rev.
To 49°33'53"
To W = 2062.80'
To E = 2098.54'

Comp. Curve
Δ = 41°52'
TD = 1636.78'
R = 1596.66'
(Forward)

0°42' CL
Δ = 8°34'30"
L = 1225.00'

COLUMBIA
RIVER

RR Rev.
1°28'30" CL
To 41°14'00"
L = 2927.90'

200' SP
S = 3°12'
a = 0.9

2°30' CL
Δ = 9°55'30"
L = 397.00'

274+09.23 P.C.S.

276+09.12 P.S.C.A.H. EQU

Use Permit RW 12134
Amendment 10
SP Filing
Map 10C-34-81

See Easement Map 5D-34-20

Special Use Permit RW 12134

1/4 Cor - For Truck Axle

U.S.A.

LOT 3

W Kendrick et ux
31-280
42-558

LOT 4

U.S.A.

RANGERS STATION

U.S.A.



Abandon Foundation

Underground Cable

5-4

5-4

270+12.23 P.C.S.

110
150
100

1430.10'

UPRR

RR Rev. 377+98.42 EMC

288+34.12 P.C.S.

15939
Deed RW 11604
45-124

15661

15661

24567

29158

10C-34-81

15933

100'

50'

150'

L-120

OFF

OFF

OFF

5-4

5-4

LOT 4

RIVER

See File RR 619 For RR Agreement

W. Kendrick et ux
31-280
42-558

COLUMBIA

N 24° 00' 00" E
162000

RR Rev
Chord Sp
S = 7° 24'
a = 0.575

400' SP
S = 6° 00'
a = 0.75

RR Rev
Chord Sp
S = 7° 25'
a = 0.575

3° 00' CL
Δ = 1° 46' 00"

400' SP
S = 6° 00'
a = 0.75

RR Rev
Chord Sp
S = 7° 25'
a = 0.575

RR Rev
Chord Sp
S = 7° 30' 45"

RR Rev
Chord Sp
S = 7° 30' 45"

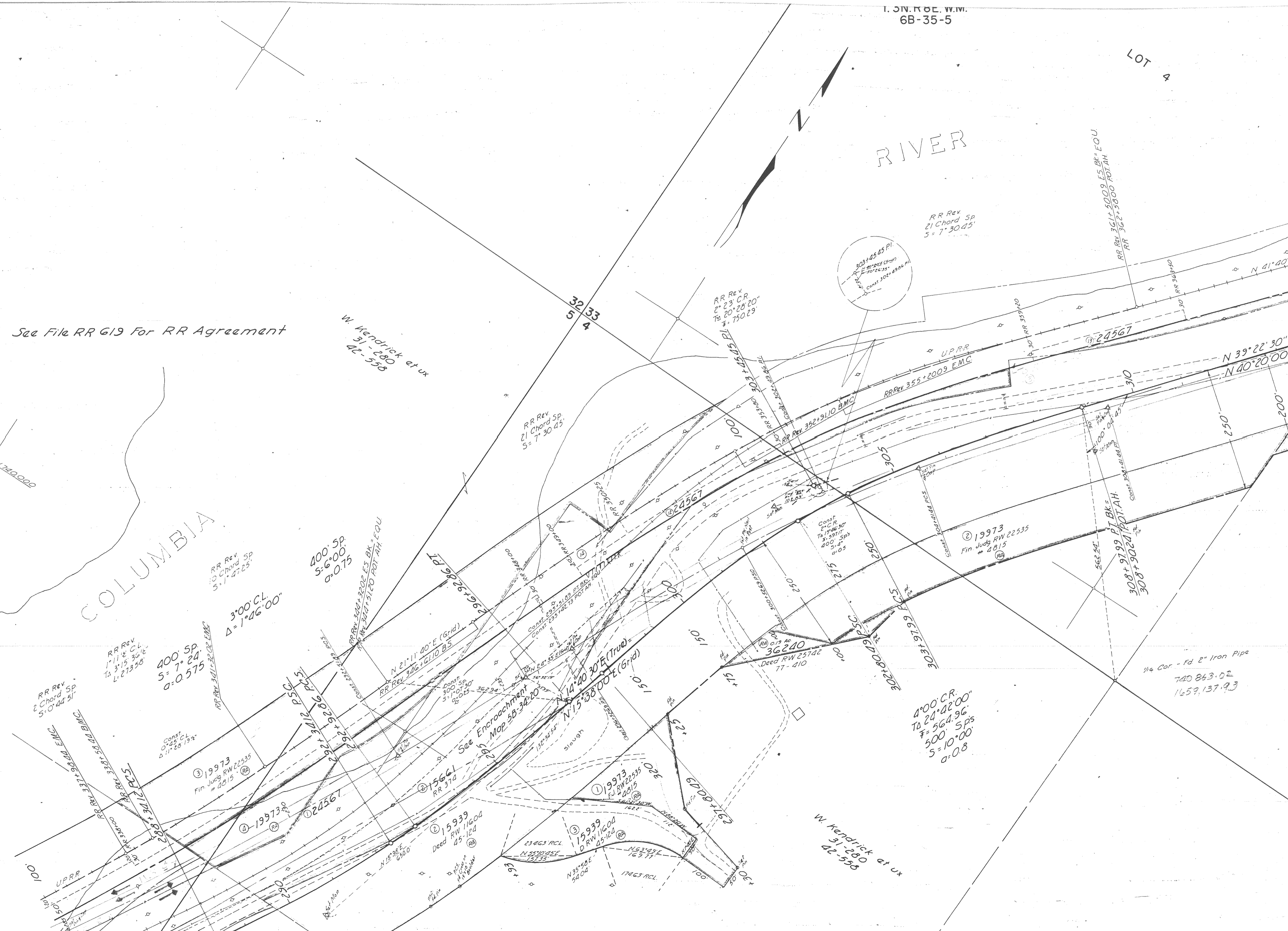
RR Rev
Chord Sp
S = 7° 30' 45"

RR Rev
Chord Sp
S = 7° 30' 45"

4° 00' CR
To 24° 42' 00"
F = 564.96'
500' SP
S = 10° 00'
a = 0.8

W. Kendrick et ux
31-280
42-558

1/4 Cor. - Fd 2" Iron Pipe
720 843.02
1659, 137.93





15940
Dead RW 11417
44 - 456
(RA)

28711
FIN. RW 20348
4725
(RA)

Const
4.00' C.R.
To 43.38' 00"
7 826.07
500' Sps
S=10.00
a=0.8

C.R. Woodward
34-576

LANG
FOREST
WAYSIDE

T. 3N. R. 8E. W.M.
T. 2N. R. 8E. W.M.

SEE IR-1-85

6295
P-136
23-307

Cor. - Fd 2" Iron Pipe
740 863.02
1659, 137.93

LOT 2

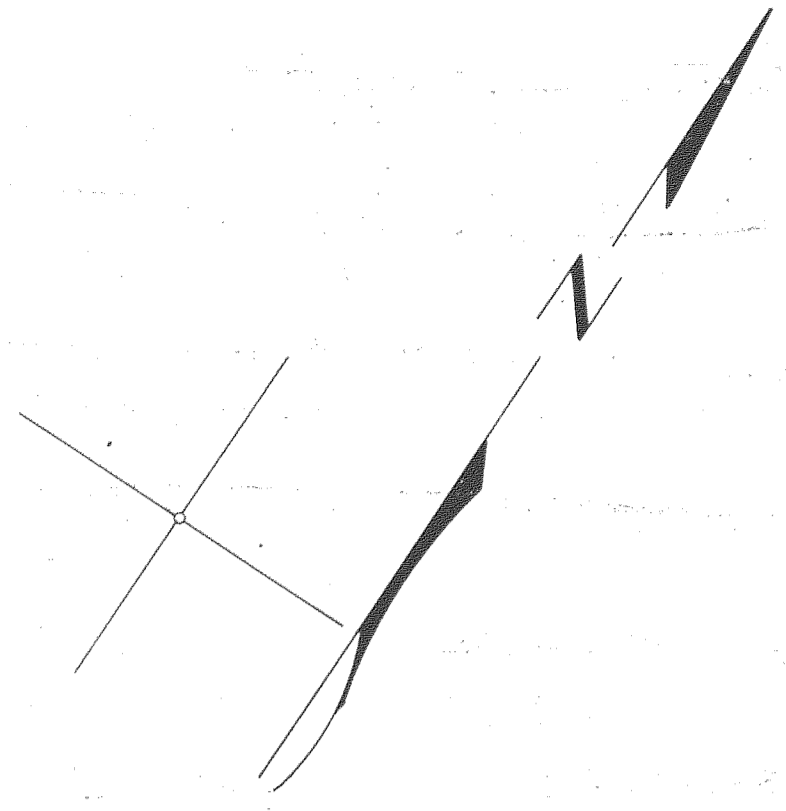
LOT 3

slough

To USA Res. P. 129

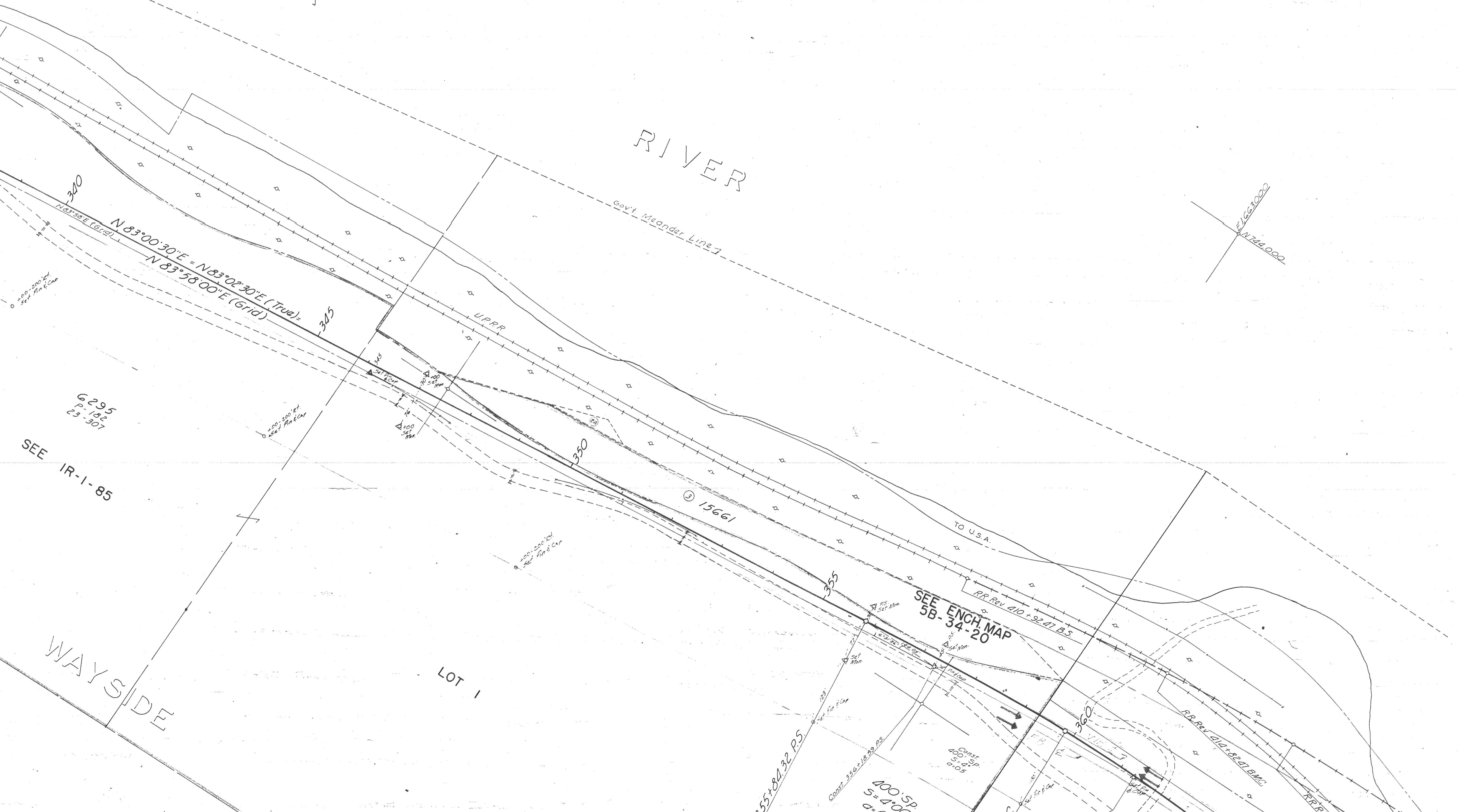
N 74.000
0007291.7

T. 3N. R. 8E. W.M.
6B-35-5



COLUMBIA

RIVER



6295
P-192
23-307
SEE IR-1-85

WAYSIDE

LOT 1

15661

SEE ENCH MAP
5B-34-20

55+81.32 P.S.

Const. 355+18.99 P.S.

100' SP
S=40
D=10

TO U.S.A.

RR REV 410+32.07 B.S.

RR REV 412+32.01 B.M.C.

1663000
N 74.000

CASCADE LOCKS - VIENTO SEC.

COLUMBIA RIVER HWY.

HOOD RIVER COUNTY

AUG. 1949 - RETRACED JULY 1968

1" = 100'

6B-35-5

PART 1 OF 3 PARTS