

6B-35-8

1" = 100'

SECTION OF 5 BY 12 STRIP FOR FIVE MILE RIVER COLUMBIA RIVER SECTION

SECTION OF 5 BY 12 STRIP FOR FIVE MILE RIVER COLUMBIA RIVER SECTION

OREGON STATE HIGHWAY DEPARTMENT
Located Line

VIENTO-HOOD RIVER SECTION

COLUMBIA RIVER HIGHWAY

HOOD RIVER COUNTY

Scale : 1 inch = 100 feet

Traced by H.K.E.
Retraced by J.A.R.

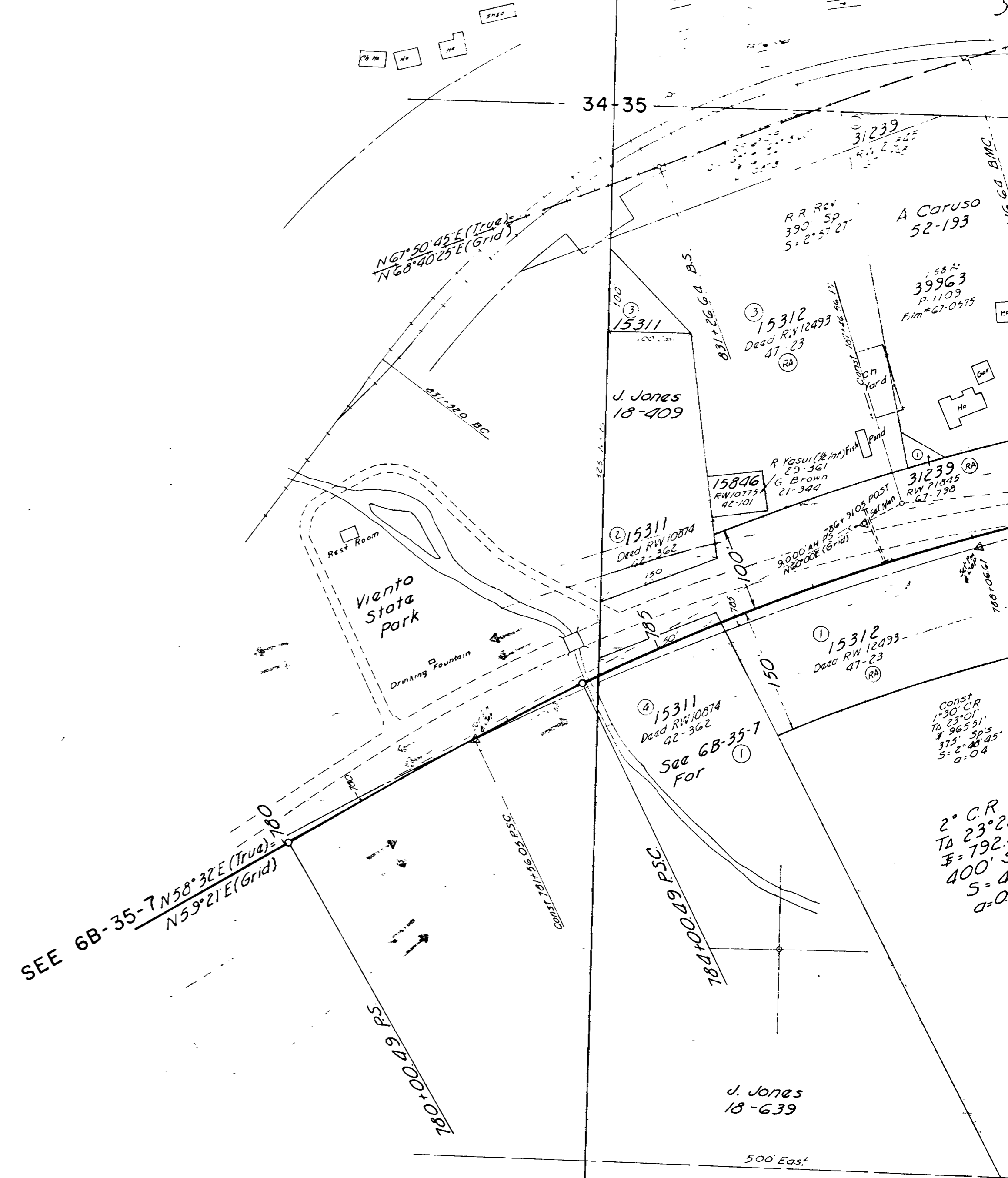
March, 1949
July, 1968

BEARINGS- AS SHOWN

PART I OF 2 PARTS

DRG. NO. 6B-32-8

ACCESS CONTROL LINE _____



T 3N. R. 9E. W.M.
6B-32-8

LOT 4

LOT 3

W Scoggin at ux
30-419

15316
Deed RW 10740
42-67

See Forks Div File for Survey
Submitted to Hood River Co
9-17-76

See File RR 619

RR Rev
1°31' CR
To 23° 59'
S = 99782'

RR Rev
390' SP
S = 2°57'21"

RR Rev
390' SP
S = 2°57'21"

A Coruso
52-193

G & G Jett
34-375
W Scoggin at ux
41-222
K. Mays at ux (CP)
74-494

W Scoggin at ux
30-419

A. Kvavia
26-232
15316
Deed RW 10740
42-67

15312
Deed RW 12493
47-23

15314
RW 12302
47-20

15315
Deed RW 12382
47-20

15315

15312
Deed RW 12493
47-23

15312

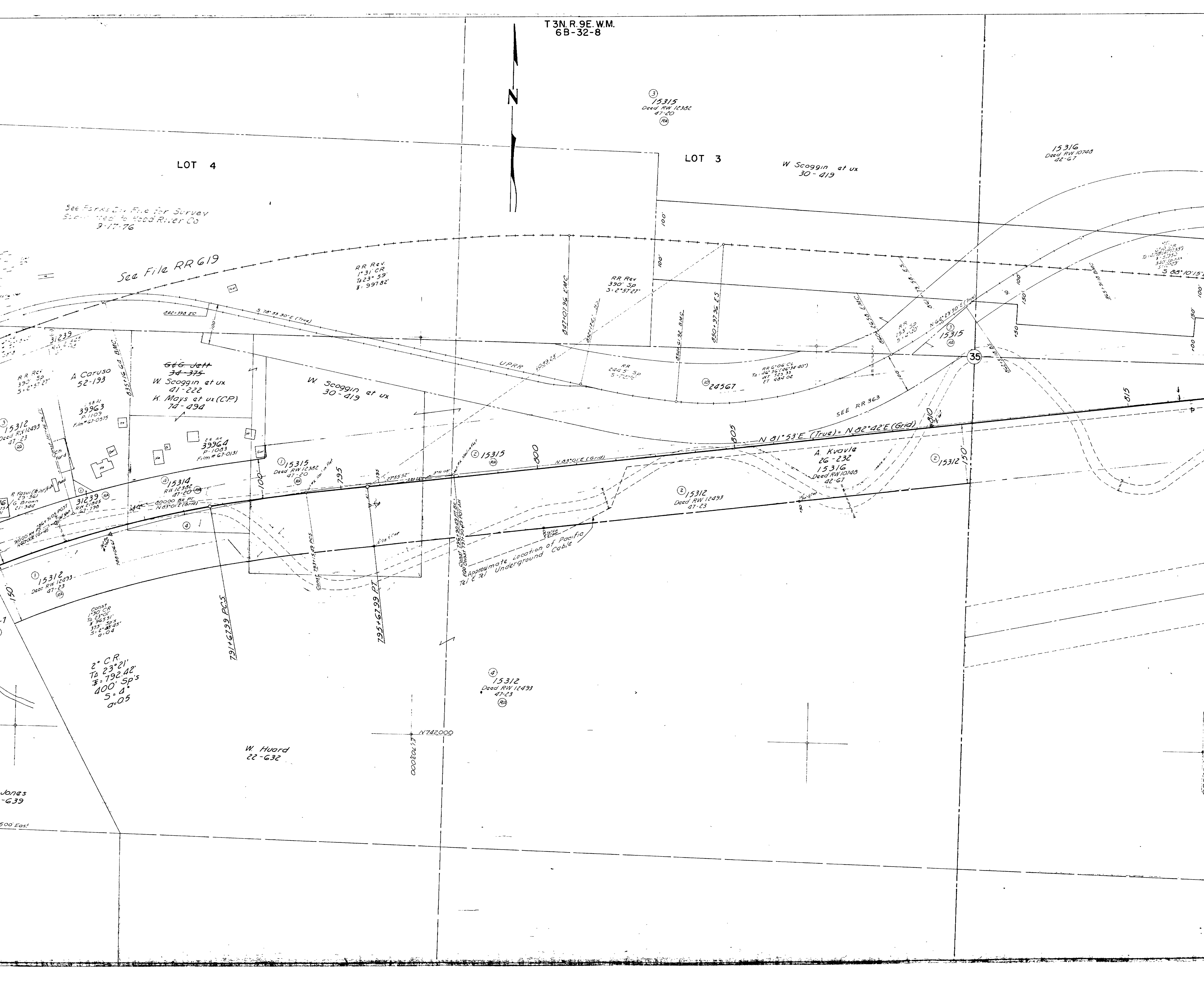
15312
Deed RW 12493
47-23

2° CR
To 23° 21'
To 792.42'
S = 400' SP's
S = 4°
a = 05

W. Huard
22-632

Jones
-639

500 East



A. Kvavla
21-492

LOT 2

15316
Deed RW 10748
02-67

LOT 1

Deed P-196
23-574

LOT

RR REV
1°05' CL
To 9° 18'
T=56523'
270° SpS
S=1°21'45'

880' 2700 D.M.C.

RR
310' CL
To 10° 11' (10° 21' 40')
T=46336'
350' SpS
S=3° 59' 30"

RR REV 0° 16' 31" E.M.C.
002' 6043' E.M.C.

RR REV 0° 19' 10' 16" E.E.S.

RR REV 0° 19' 10' 16" E.E.S.
006' 710' 55' 5" E.M.C.

24567
RR 363

N 02° 31' 45" E (True) - N 03° 21' 25" E (Grid)
N 01° 53' E (True) - N 02° 42' E (Grid)

15316
Deed RW 10748
02-67

Approximate location of Pacific
Tel & Tel Underground Cable

A. Kvavla
21-492

Bonneville - The Dalles
20-123

Transmission Line

N 742,000
000050423

N 742,000
00004213

P-196
574

LOT 4

LOT 3

State Land Board 19242

Deed RW 14392
39-491 (Hood River Co)
53-465 (Wasco Co)
121-194
129-510 (Wasco Co)

RR Rev
182 SP
5-2-26-38d

3°30' CL
To 22°36'
7-37831'
500' Sp3
5-8-189
0-107

31°45'E (True) - N 83°21' 25"E (Grid)

3°E (True) - N 82°42'E (Grid)

24567

RR Rev
2° CR
To 18°30'12"
7-63132'
330' Sp3
5-318

2° CR
To 16°29'
7-61526'
400' Sp3
5-400
0-05

4° CR
To 24°47'
7-36607'
500' Sp3
5-101
0-08

Deed P-196
23-574

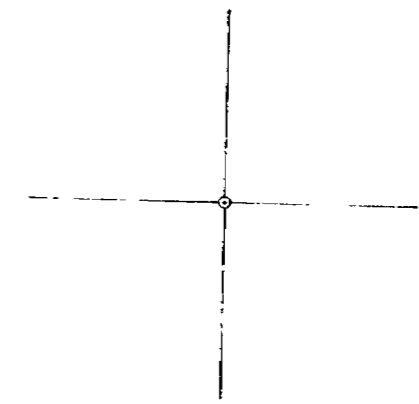
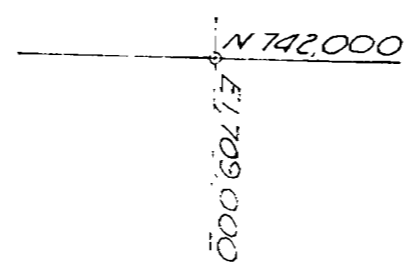
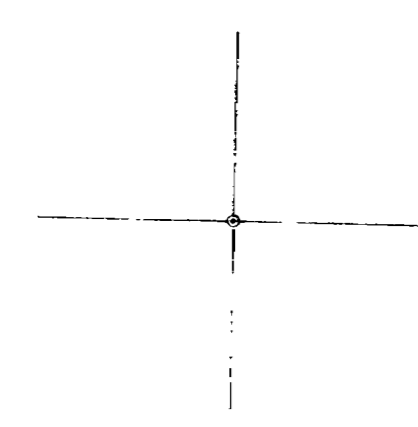
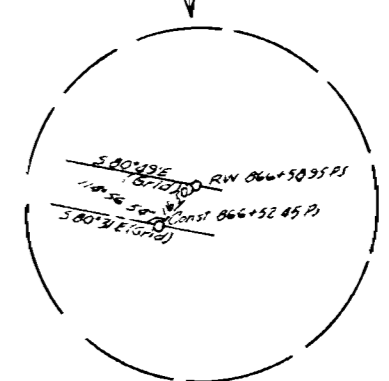
SEE IR-1-96
IR-1-110

000' 00" 1.7
N 142.000

WYGANT PARK

36

Deed P-196
23-574



T. 3N. R. 9E. WM.
6B-32-8

RR Rev
1'44" CL
To 43'37" AT
F. 146567
S. 150291

1'42" CL
To 40'58" 30"
F. 142980
300' SpS.
S. 2°53'4"
a. 0.5

DRK Rev
500' Sp
S. 6°15'
a. 0.5

RR Rev
420' Sp
S. 1°57'5"
a. 0.5

Sold to OWREN Co
Under RR 374
GT-251

RR
330' Sp
S. 3°52'30"

RR
300' Sp
S. 3°07'2"

LOT 1

SEE RR 363

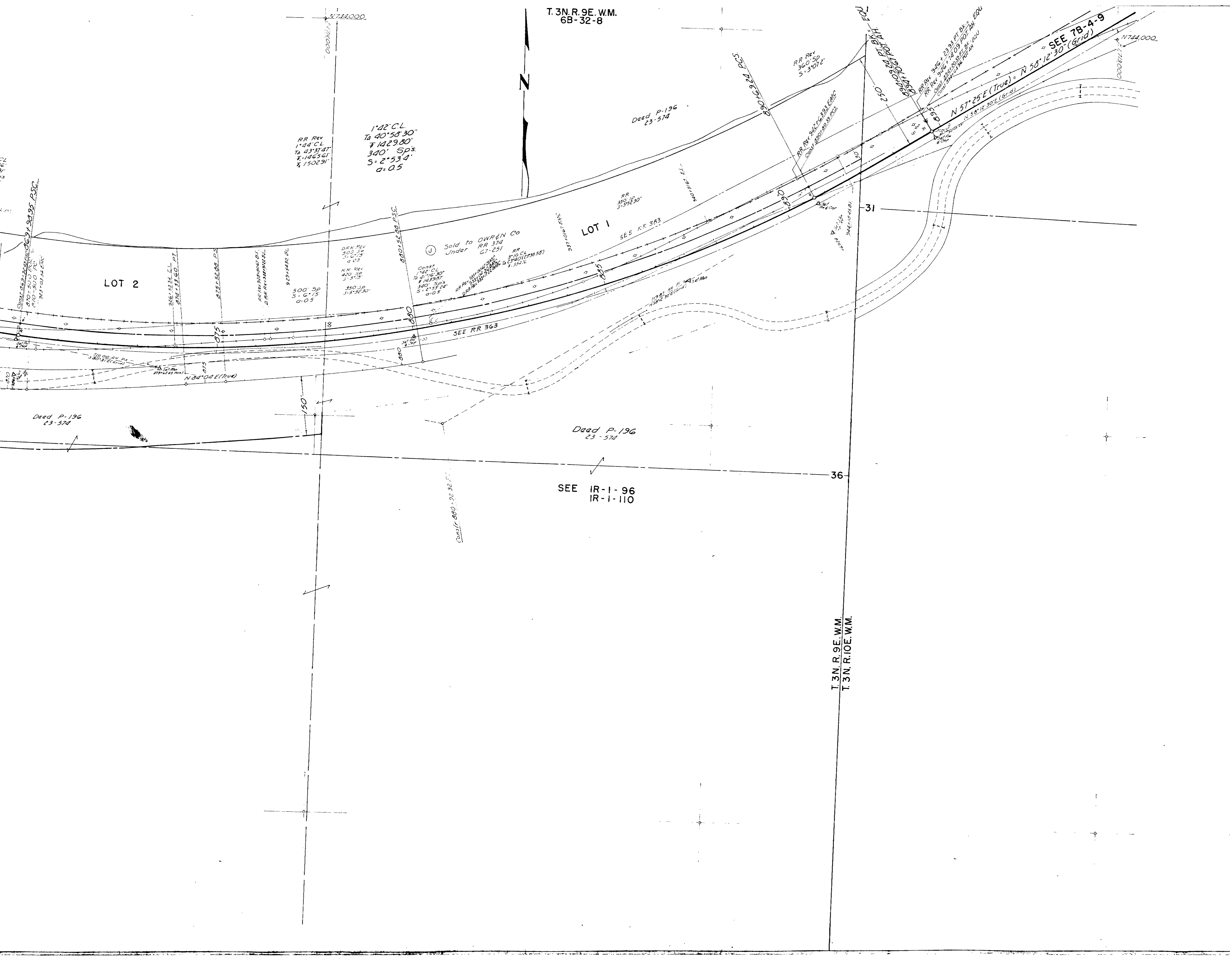
LOT 2

Deed P-196
23-574

Deed P-196
23-574

SEE IR-1-96
IR-1-110

T. 3N. R. 9E. WM.
T. 3N. R. 10E. WM.



1744,000.
000000

+

+

+

000000
1744,000

+

+

VIENTO-HOOD RIVER SEC.
COLUMBIA RIVER HWY.
HOOD RIVER COUNTY
MARCH 1949 RETRACED JULY 1968
1" = 100'
6B-32-8
PART 1 OF 2 PARTS