

*Col. River Hwy. 1949
 1968 retraced
 Viento → Mitchell Pt.
 Loc. Line*

OREGON STATE HIGHWAY DEPARTMENT
 Located Line
VIENTO-HOOD RIVER SECTION

COLUMBIA RIVER HIGHWAY

HOOD RIVER COUNTY

Scale: 1 inch = 100 feet

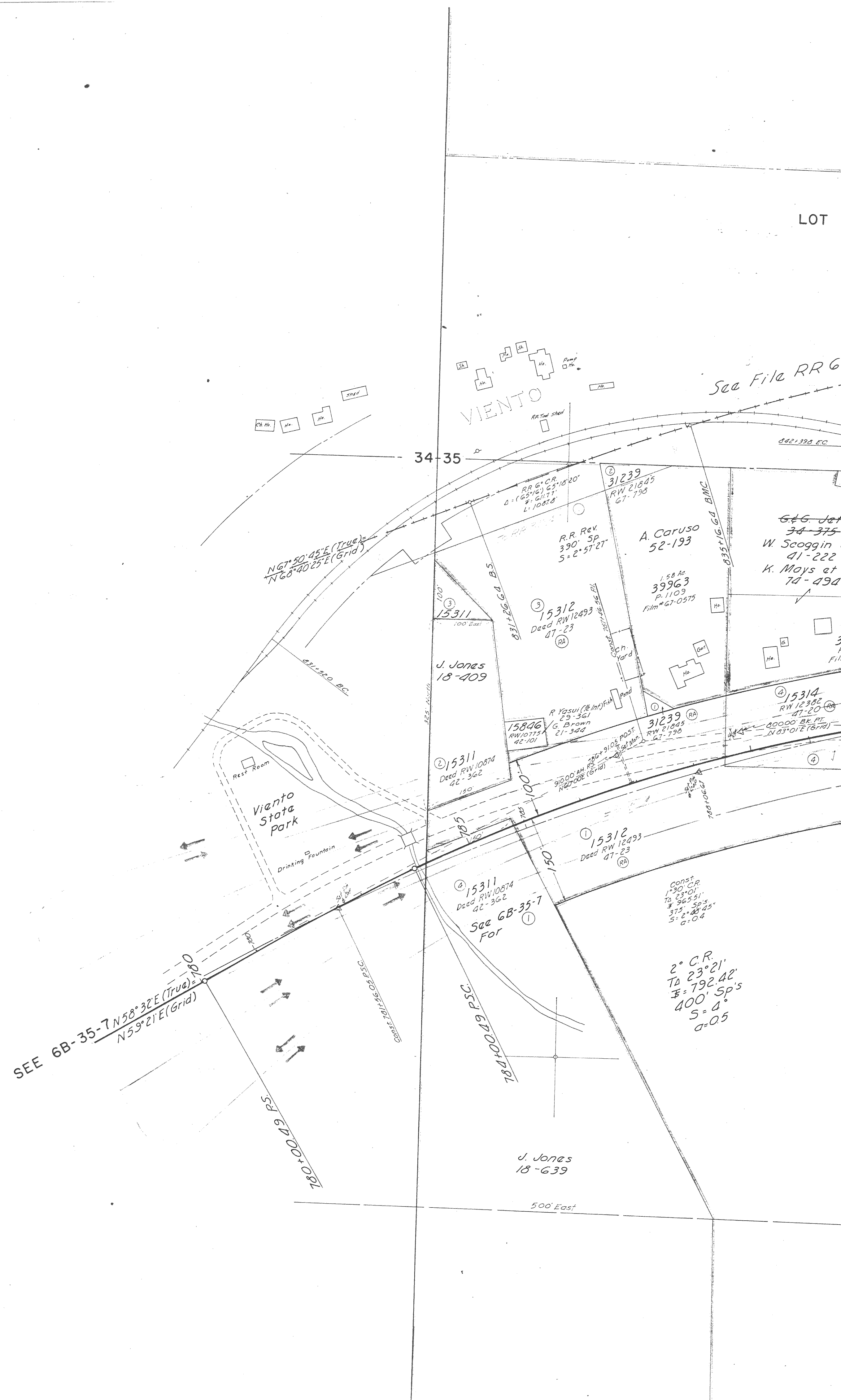
Traced by H.K.E. March, 1949
 Retraced by J.A.R. July, 1968

BEARINGS- AS SHOWN

PART I OF 2 PARTS

DRG. NO. 6B-32-8

ACCESS CONTROL LINE
Survey Map Completed Aug, 1969



T 3N. R. 9E. W.M.
6B-32-8



15315
Deed RW 12382
47-20
RA

A. Kvavla
21-492

LOT 4

LOT 3

W Scoggin at ux
30-419

15316
Deed RW 10748
42-67

LOT 2

See File RR 619 For RR Agreement

RR Rev
1° 31' CR
TA 23° 59'
S = 997.82'

RR Rev
3° 0' SP
S = 2° 57' 27"

See Ench. Map 8B-17-11

A. Caruso
52-193

G. G. Jett
34-375

W Scoggin at ux
41-222
K. Moys at ux (CP)
74-494

W Scoggin at ux
30-419

2.5 AC
3996.4
P. 1003
Film # 67-0131

RR
244.5' SP
S = 72° 27'

RR 6106 CL
TA = 46° 36' (46° 34' 40")
WT = 265.33'
ET = 484.06'

See Ench. Map 6B-35-20

N 81° 53' E (True) = N 82° 42' E (Grid)

A. Kvavla
26-232
15316
Deed RW 10748
42-67

A. Kvavla
21-492

Approximate Location of Pacific
Tel. & Tel. Underground
Cable

Bonneville - The Dalles
2B-123

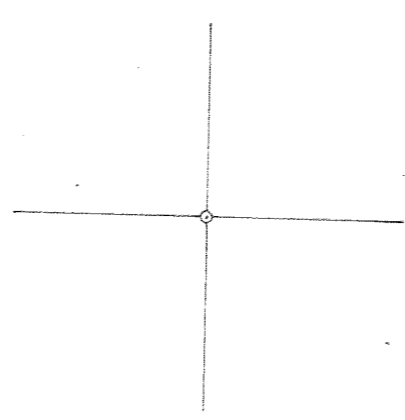
2° C.R.
TA 23° 21'
S = 192.42'
400' Sp's
S = 4'
a = 05

15312
Deed RW 12493
47-23
RA

W. Huard
22-632

N 742 000
E 1703 000

N 742 000
E 000604 17



vav/a
492

LOT 2

15316
Deed RW 10748
42-67

LOT 1

Deed P-196
23-574

LOT 4

See GB-35-20 For Easement
See RR Ench. Map 8B-17-16

RR Rev
1'05" CL
74.9' 18"
7.56523'
270' Sp's
5.1' 27' 45"

RR
3'10" CL
74.18' (107' 74.0')
7.56336'
250' Sp's
5.3' 27' 30"

RR Rev 079 491.96 E.S.
886.1' 10.33' AH

RR Rev 079 491.96 E.S.

RR Rev 079 491.96 E.S.

N 82° 31' 45" E (True) = N 83° 21' 25" E (Grid)

24567
RR 363

N 81° 53' E (True) = N 82° 42' E (Grid)

N 83° 01' E (Grid)

N 58° 20' 35" E (Grid)

S 78° 12' 15" E (True)

RR Rev 079 491.96 E.S.

RR Rev 079 491.96 E.S.

RR Rev 079 491.96 E.S.

RR Rev 079 491.96 E.S.

RR Rev 079 491.96 E.S.

RR Rev 079 491.96 E.S.

RR Rev 079 491.96 E.S.

RR Rev 079 491.96 E.S.

RR Rev 079 491.96 E.S.

RR Rev 079 491.96 E.S.

RR Rev 079 491.96 E.S.

RR Rev 079 491.96 E.S.

RR Rev 079 491.96 E.S.

RR Rev 079 491.96 E.S.

RR Rev 079 491.96 E.S.

RR Rev 079 491.96 E.S.

RR Rev 079 491.96 E.S.

RR Rev 079 491.96 E.S.

RR Rev 079 491.96 E.S.

RR Rev 079 491.96 E.S.

RR Rev 079 491.96 E.S.

RR Rev 079 491.96 E.S.

RR Rev 079 491.96 E.S.

RR Rev 079 491.96 E.S.

RR Rev 079 491.96 E.S.

RR Rev 079 491.96 E.S.

15316
Deed RW 10748
42-67

Approximate Location of Pacific
Tel & Tel Underground Cable

35 36

A. Kvavle
21-492

Bonneville - The Dalles
EB-123

Transmission Line

N 742,000

00000000

See File RR 619 For RR Agreement

See Ench. Map 8B-17-16

See Ench. Map 7B-16-8

LOT 3

LOT 2

State Land Board
19242 @
Deed RW 14332
53-469 (Hood River Co.)
127-194
129-310 (Wasco Co.)

WYGANT PARK

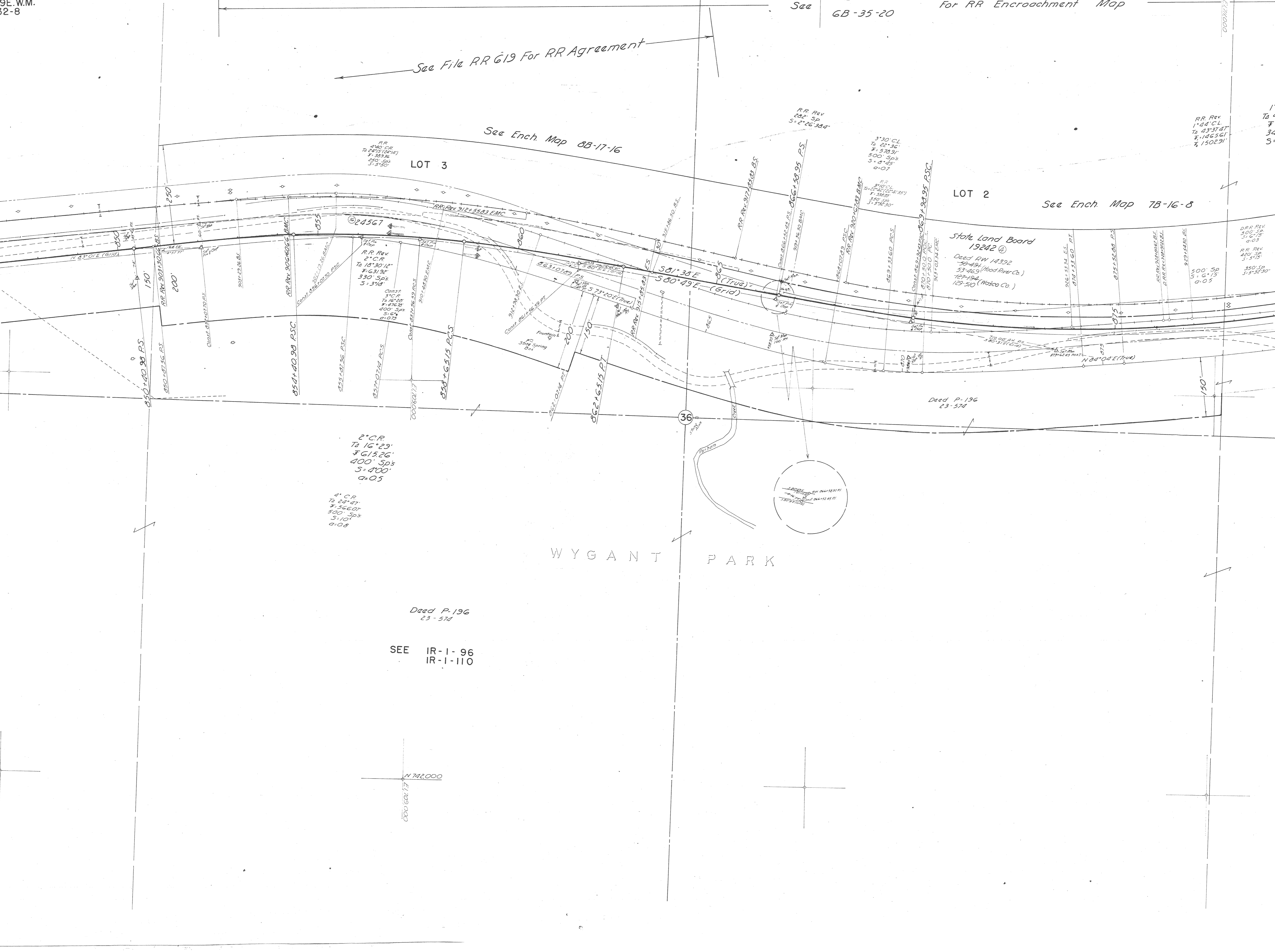
Deed P-196
23-574

SEE IR-1-96
IR-1-110

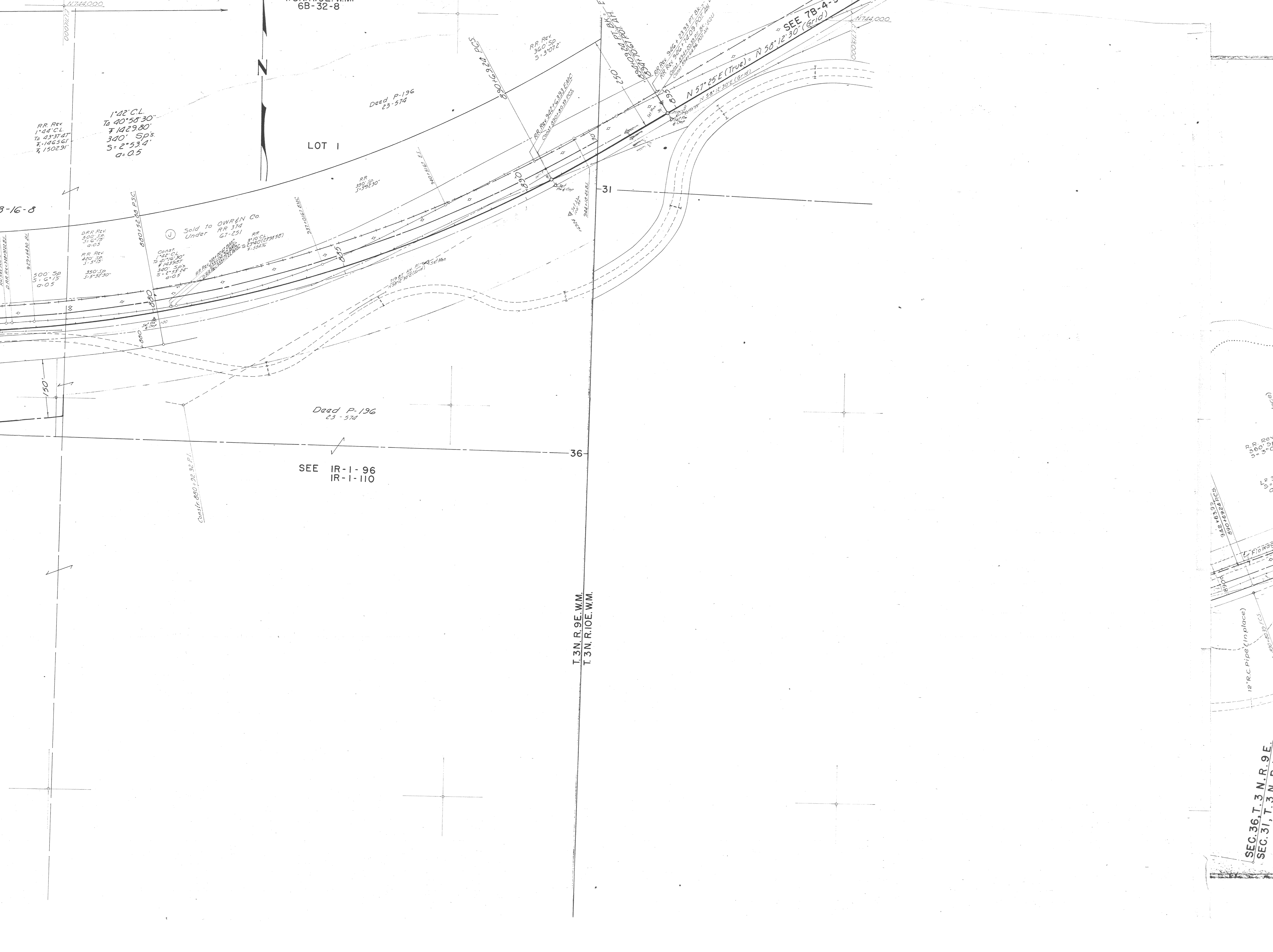
2° CR
To 16° 23'
F 615.26'
400' Sp's
S=400'
a=0.5

4° CR
To 23° 47'
F 366.01'
300' Sp's
S=10'
a=0.8

N 742000
E 1709000



6B-32-8



RR Rev
1°44' C.L.
To 43°31' 24"
± 1463.61'
± 1502.91'

1°22' C.L.
To 40°58' 30"
± 1429.80'
340' Sp's
S = 2°53' 4"
G = 0.5

LOT 1

Dead P. 196
23-574

Sold to OWRN Co
Under RR 374
G7-231

Const
142' C.L.
To 21°16' 30"
± 1439.07'
300' Sp's
S = 1°53' 24"
G = 0.5

Dead P. 196
23-574

SEE IR-1-96
IR-1-110

T.3N. R.9E. W.M.
T.3N. R.10E. W.M.

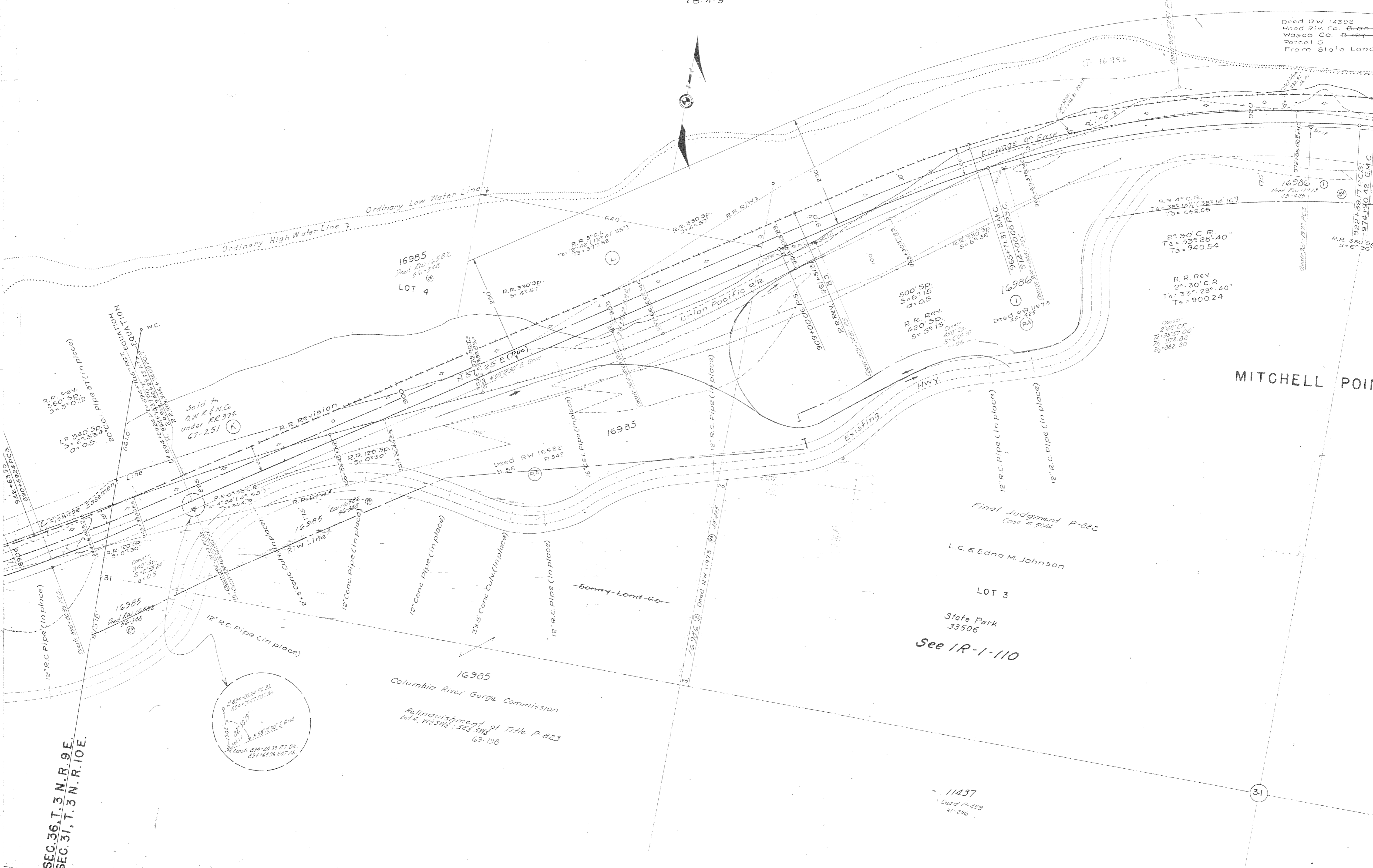
SEE 7B-4-3
N 58° 12' 30" (Grid)
N 57° 25' E (True) = N 58° 12' 30" E (Grid)

SEC. 36, T. 3 N. R. 9 E.
SEC. 31, T. 3 N. R. 10 E.

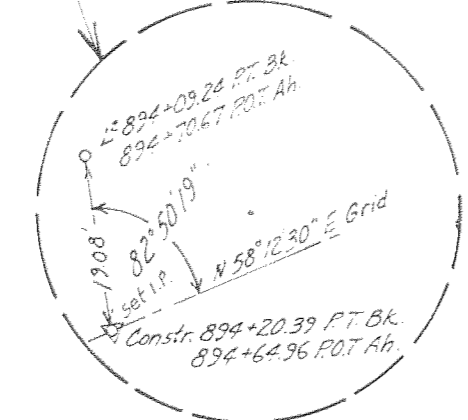
T. 3 N. R. 10E.
7B-4-9

See 7B-9-12

Deed RW 14392
Wood Riv. Co. B-50-1
Wasco Co. B-127-P
Parcel 5
From State Land



SEC. 36, T. 3 N. R. 9E.
SEC. 31, T. 3 N. R. 10E.



See IR-1-110

Deed RW 14392
Hood Riv. Co. B-50-R-491 B-53-R-469
Wasco Co. B-127-R-194 B-129-R-510
Parcel 5
From State Land Board

Sold to OWR&N Co.
under RR 374, I, L, M, N
67-251



MITCHELL POINT

42157
R.M. Galligan
50-377
Deed P-1172
68-1129

Margaret Locke Galligan

LOT 2

17802
Talus Pit
1293 Ac.
See IR-5-149
Deed Q-1365
B.48 P.525

-NOTE-
All Bearing for Easement on
Oregon Coordinate System
Perm. Easemt.
Q-1365
12-121

SEC. 31
SEC. 32

31

