

OREGON DEPARTMENT OF TRANSPORTATION

OREGON STATE HIGHWAY DIVISION

Projected Line

HOOD RIVER SECTION

COLUMBIA RIVER HIGHWAY

HOOD RIVER COUNTY

Scale: 1 inch = 100 feet

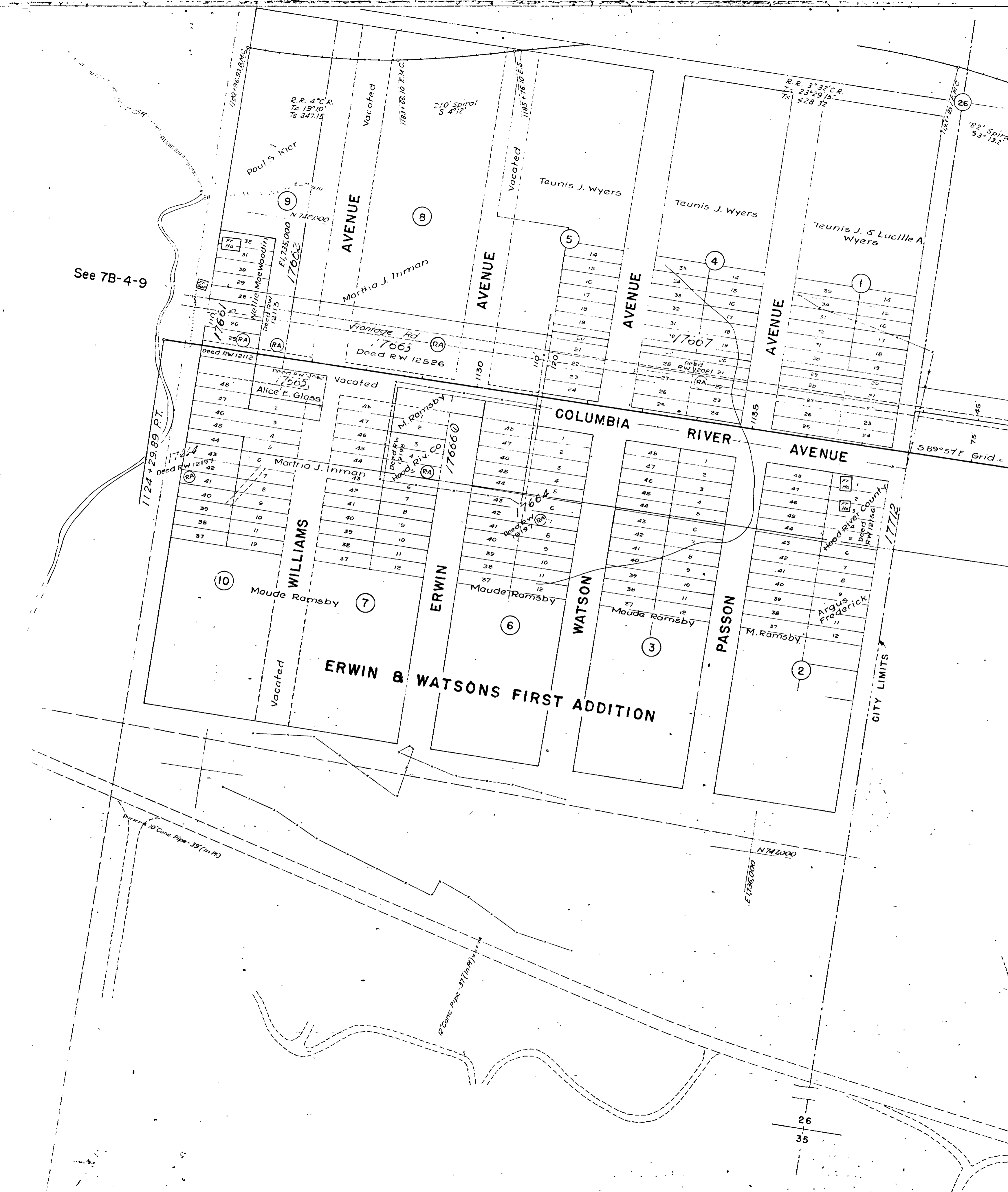
Traced by V.D.W.

June, 1947 Revised May, 1979

Compiled From Misc. Plats & Surveys

OREGON DEPARTMENT OF TRANSPORTATION

DRG. NO. 6B-24-4



T.3N. R.10E. W.M.
6B-24-4



John J. & Lucille A. Wyers

Lot 8
Wells
Bk. 33 P. 124

City of Hood River
1.66 Ac.

Lot 9

Wells
Bk. 45, P. 523
Sold
10° C. L.
A = 52° 38'
P = 167.73

589° 57' E Grid = N 89° 17' E True

Deed RW 12368

17666
Parcel #2

Deed RW 12198

Deed RW 12157
17668 (RA)

Deed RW 12224
17669 (RA)

Deed RW 12264
17670 (RA)

Deed RW 12478
17671 (RA)

Union Oil Co.

Shell Oil Co.
17672

500' Spiral
S 10° 00'
a 0.8

CITY OF HOOD RIVER

WASCO

LINCOLN

COLUMBIA

SEC. 26
SEC. 25

N.E. Cor.
W.D. Jenkins D.L.C.
No. 38

Richfield Oil Corp.

The Texas Co.

Union Oil Co.

Shell Oil Co.

10TH ST.

13TH ST.

15TH ST.

17TH ST.

CITY LIMITS

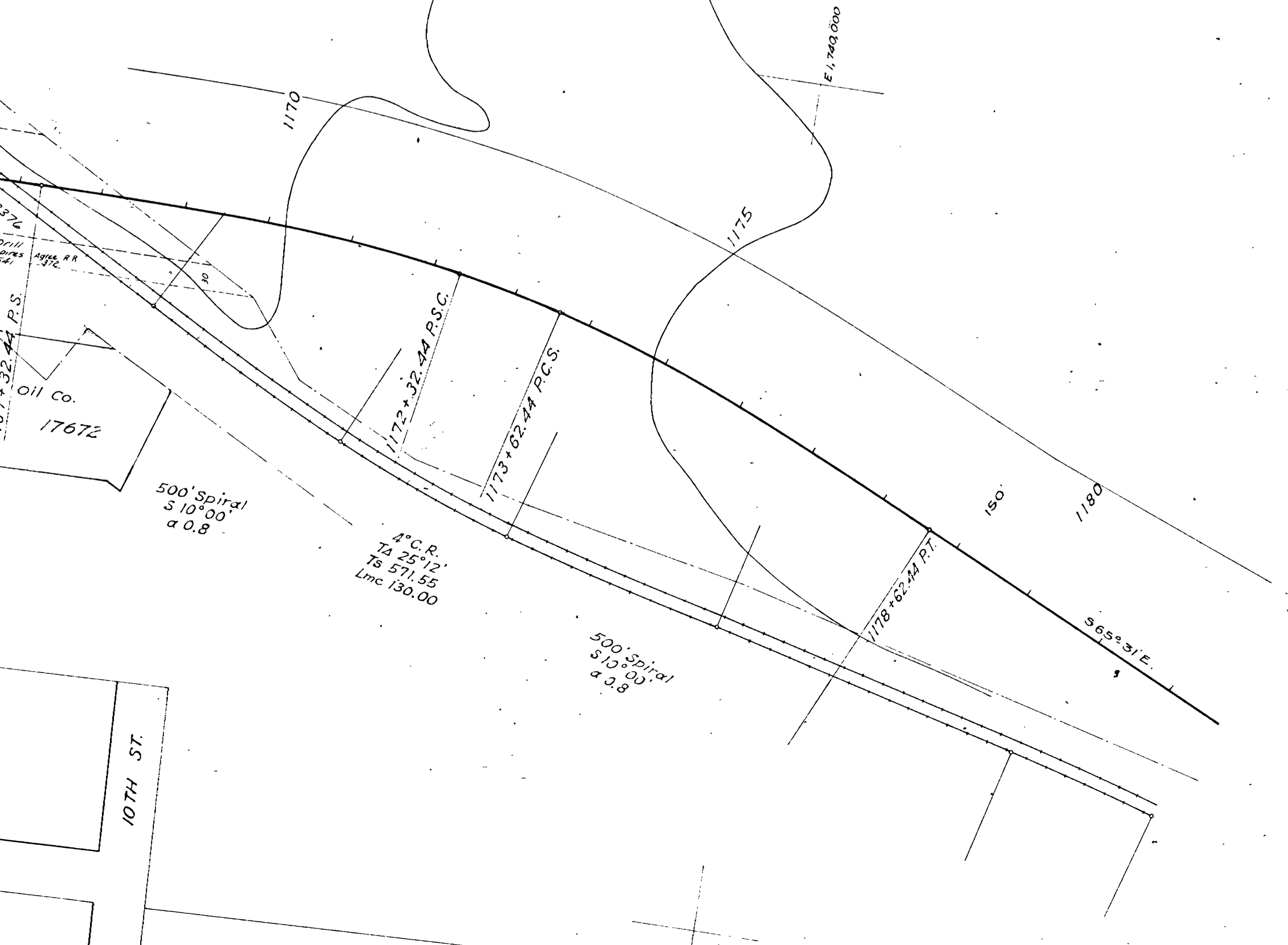
Hood River County

Frederick

NUE

John J. & Lucille A. Wyers

Nathaniel Coe D.L.C. No. 37
748,000

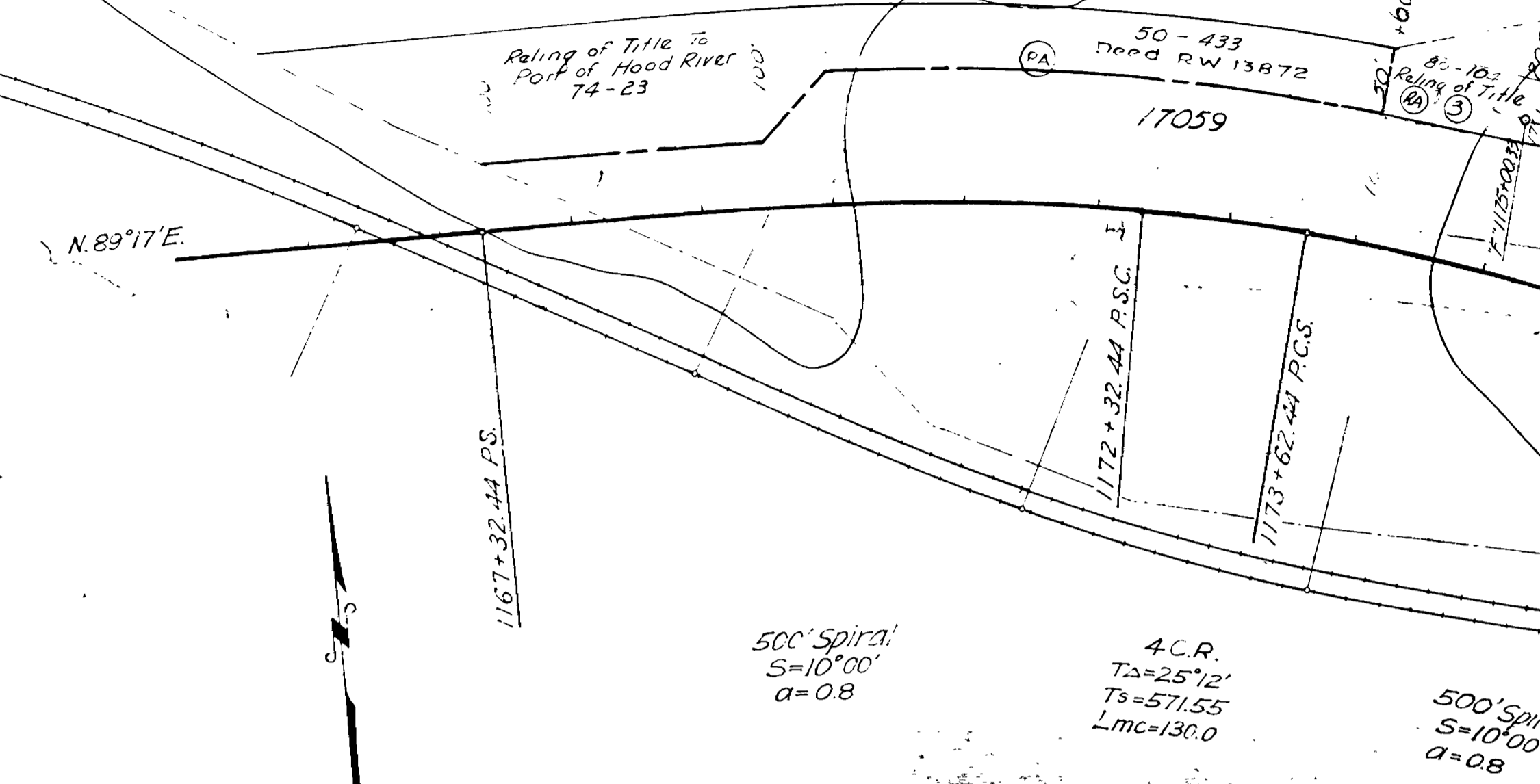


Oil Co.
17672

10TH ST.

N 748,000
E 177,000

City of Hood River
B 29 P547



50-433
Deed RW 13872

N. 89°17'E.



ST.

10TH

ST.

9TH

City of Hood River
B 29 P 5-47

50-433
Deed RW 13872

17059

30911

30912

17060

17061

17062

16862-A

Hood River County
B 25 P 111
S 65° 31' E

Reling of Title
80-10A

19256

400' Spiral
S 4° 00' 00" E

17062

17063

17064

17065

17066

17067

17068

17069

17070

17071

17072

17073

17074

17075

17076

17077

17078

17079

17080

19256

400' Spiral
S 4° 00' 00" E

19256

19256

19256

19256

19256

19256

19256

19256

19256

19256

4.C.R.
T₂=25°12'
T₃=57°55'
mc=130.0

500' Spiral
S=10°00'
a=08



Secondary Channels

Main Channel

HOOD RIVER

RIVER
North Line DLC #40

Port of Hood River Comm.
34-537
F-720856
See RW 8547 for Lease, State to Port of Hood River

Secondary Channels

Lot 1

R. H. Vaughan et al
AS-583
Approp. Loc of Old High
Water Line (72' E. 1/2 S. 1/2 E.)

Improvement RW 8517
80-619
EXISTING #7

170640
RW 12882
88-265

Sold to Port of Hood River Comm.
69-377

Port of Hood River Comm.

19256

DEED # 8547
See IR-2-1651
33-317

Natural Ord. High Water Line

S on E. Line
to R.R.

N 147.000

Lot 9

170542
RW 25063

17064
RW 2465

17065
RW 2196

U.S. Water (Hood Bay Zone)
DLC #40

234.62
S 74° 42' E

S 86° 19' 20" E
246.70

N 66° 35' 50" E
7-116.08

127113899 POS. I.T.
A 1250' E 164' 20" N

1228.00

400 Spiral
S-2'
A-0.25

1228-17-51 P.S.C.

1230

T3N R10E W1M
T3N R11E W1M

See IR-A-506

Harry W. & Alice English

N 746.000
E 746.000

25 30
36 31

ST.

E Line N. Benson
D.L. C. # 37

Natural Ord. High Water Line

B. on E. Line
to R.R. 7/4

RUTHTON POINT-HOOD RIVER SECTION
DRG. NO. 6B-24-4

1° C. R.
TA = 28° 15' 30"
TS = 1642.55'
L = 2426.83'

1253+03.34 P.C.S.

400' Spiral
S = 2°
a = 0.25

1257+03.34 P.T.

S 62° 07' 30" E

See 75

ASHTON ROAD - 100' WIDE