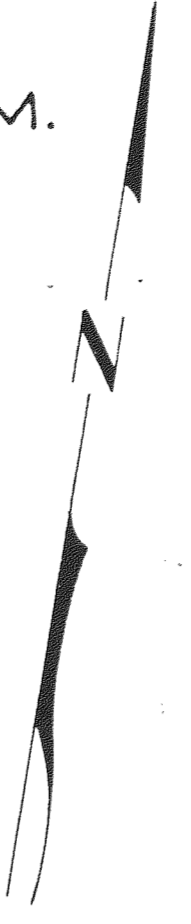


OREGON STATE HIGHWAY DIVISION
 Projected Line
HOOD RIVER SECTION
 COLUMBIA RIVER HIGHWAY
 HOOD RIVER COUNTY
 Scale: 1 inch = 100 feet
 Traced by V.D.W. June, 1947 Revised May, 1979
 Compiled From Misc. Plots & Surveys

DRG. NO. 6B-24-4



T.3N. R.10E. W.M.
6B-24-4



Tennis J. Wyers
Tennis J. & Lucille A. Wyers
17667

Lot 8
Wells
Bk. 33 R.124

City of Hood River
1.68 Ac.
78730

Wells
Bk 45, P.523
Sold
10° C. L.
A = 52° 38'
T = 167.75

17666
Parcel #2

Deed RW 12368

Deed RW 12198

Deed RW 12157
17668

Deed RW 12224
17669

Deed RW 12264
17670

Deed RW 12476
17671

CITY OF HOOD RIVER

WASCO

LINCOLN

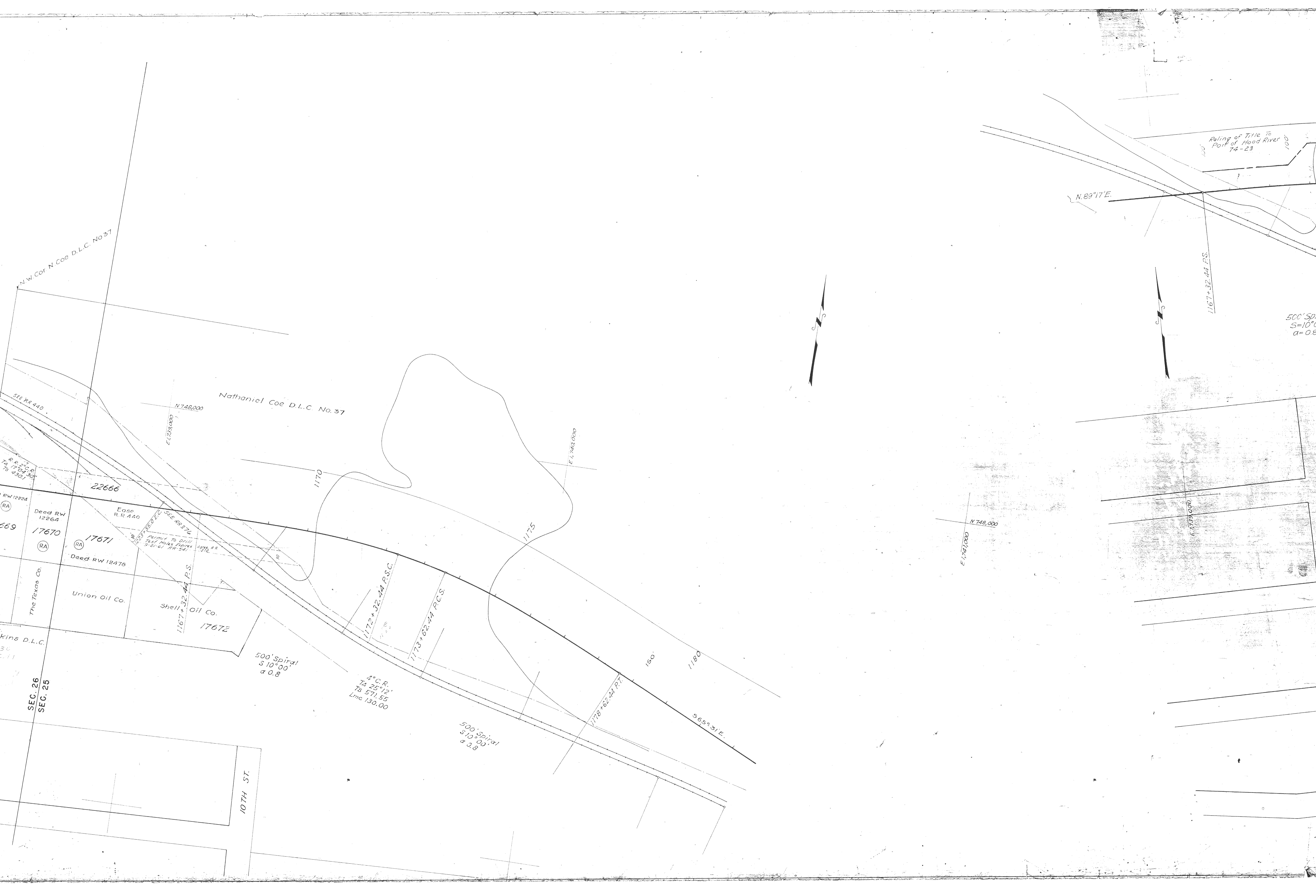
COLUMBIA

Kenneth S. Krumenacher

N.E. Cor.
W.D. Jenkins D.L.C.
No. 38

SEC. 26
SEC. 25

26
35



N.W. Cor. N. Coe D.L.C. No. 37

Nathaniel Coe D.L.C. No. 37

SEE RR 440

R.W. 12224

Deed RW 12264

Deed RW 12476

The Texas Co.

Kins D.L.C.

SEC. 26

SEC. 25

10TH ST.

N. 83° 17' E.

1167 + 32.44 P.S.

500' Spiral
S=10°
a=0.8

N 748,000
E 1729,000

E 1,740,000

1170

1175

1172 + 32.44 P.S.C.

1173 + 62.44 P.C.S.

150'

1180

S 65° 31' E.

500' Spiral
S 10° 00'
a 0.8

A.C.R.
T₂ 25° 12'
T₃ 571.55
Lmc 130.00

500' Spiral
S 10° 00'
a 0.8

1178 + 62.44 P.T.

N 748,000
E 1,741,000

E 1,739,000

Reling of Title to
Port of Hood River
74-23

T.3N. R.10E. W.M.
6B-24-4

R I V E R

Port of Hood River Comm.
5A-537
F-120856
See RW 8547 for Lease, State to Port of Hood River

Main Channel

Secondary Channels

Port of Hood River Comm.
36-159

Lot 7

400' Spiral
S 4° 00'
α 0.5

Lot 8
19662

Hood River Co.

19287
Deed RW 15102
B 53 P 265
19256
Deed RW 14912
B 51 P 109

1204 + 36.55 P.T.

FRONT ST.
E.L. West Case D.L.C. #157

R. H. Vaughan et ux
AS-555

Lot 9

16684
Deed RW 18550
A.H. Lott

17025
Deed RW 25665

17064
Deed RW 23882

U.S. Water (Near SW Cor)
D.L.C. #220

23462
S 74° 42' E
346.70

S 86° 19' 20" E
346.70

T3N R10E W1M
T3N R11E W1M

See IR-4-506

Horry W. & Alice English

25 30
36 31

INTERSTATE BRIDGE

Sold to Port of Hood River Comm.
68-377

DEED # 8547
See IR-2-1651
33-317

400' Spiral
S 2°
α 0.25

Q.V. R.N. Co. RR # 7

1ST
N 74° 00'
E 1743.00

1ST
N 746.000

1204 + 36.55 P.T.
150
1205
1200
1220

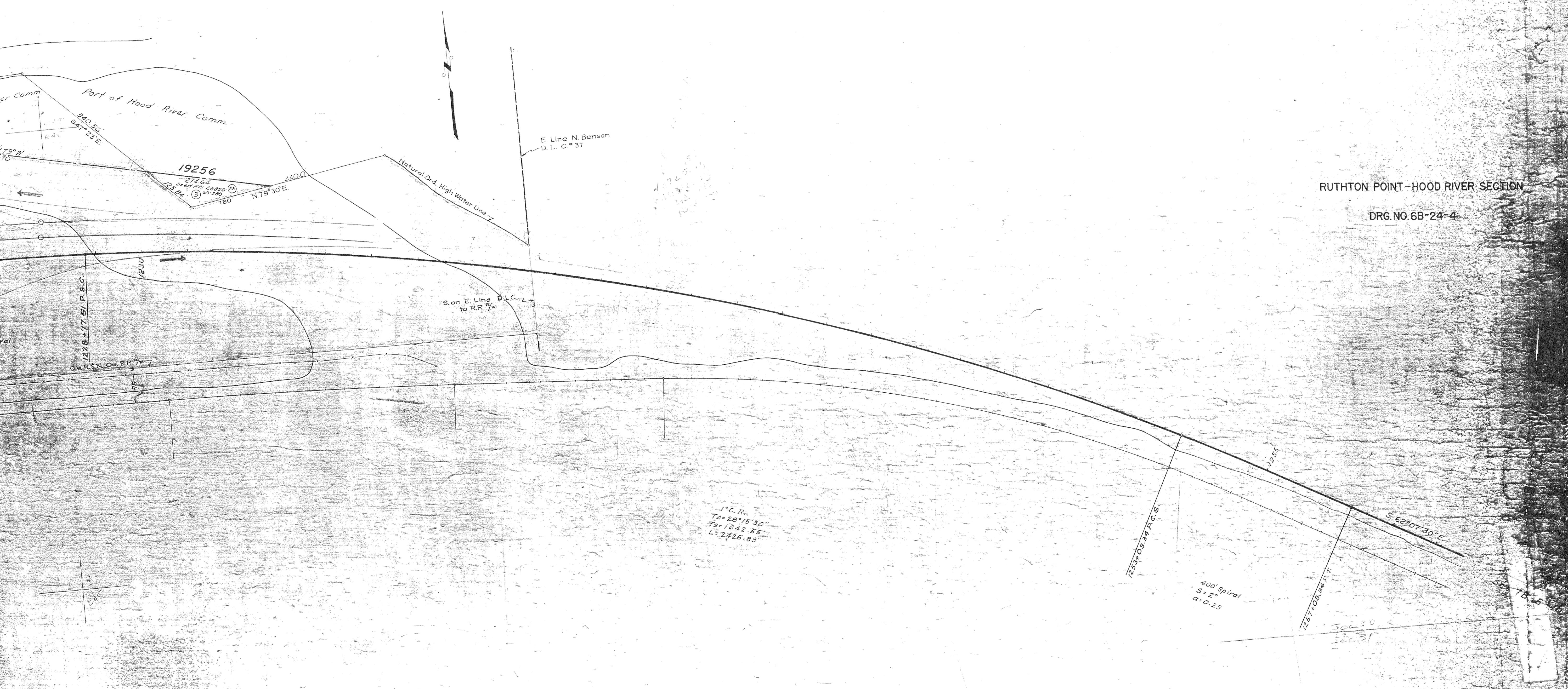
1220
1225
1230

1220 + 17.51 P.S.C.

1220
1230

1220
1230

1220
1230



RUTHTON POINT-HOOD RIVER SECTION
 DRG. NO. 6B-24-4