

OREGON DEPARTMENT OF TRANSPORTATION

OREGON DEPARTMENT OF TRANSPORTATION

OREGON STATE HIGHWAY DEPARTMENT

# GORTON CREEK-VIENTO SECTION

ENCROACHMENTS ON O-W.R.R. & N. CO. PROPERTY  
COLUMBIA RIVER HIGHWAY

HOOD RIVER COUNTY

Scale: 1 inch = 100 feet

Traced by F. I. T.

Clay Cornett, Locating Engineer

February 1950

Rev. July 19, 1951

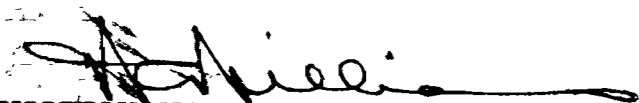
Rev. August 17, 1951

Rev. Sept. 12, 1951 Temp Underpasses Added

DRG. NO. 5B-34-21

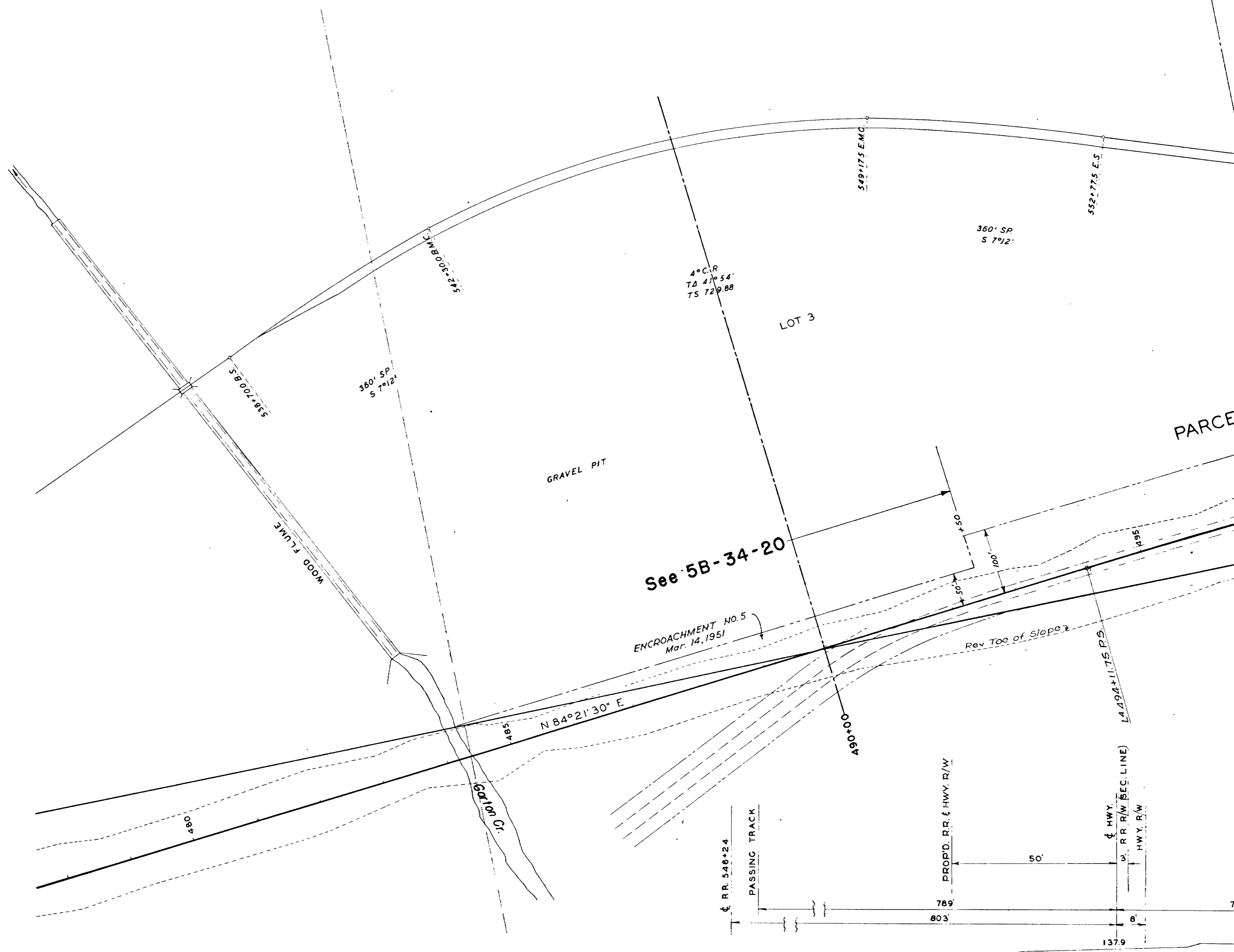
OREGON DEPARTMENT OF TRANSPORTATION

Approved:



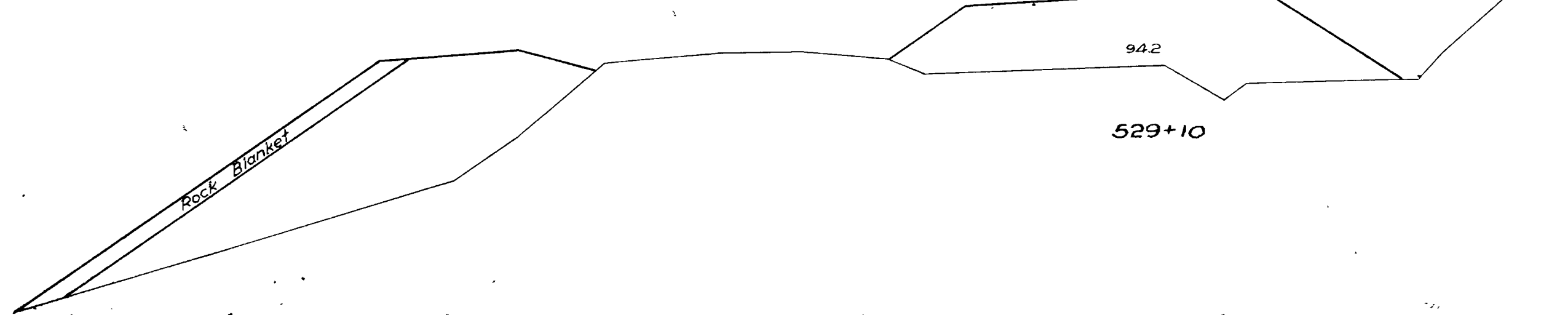
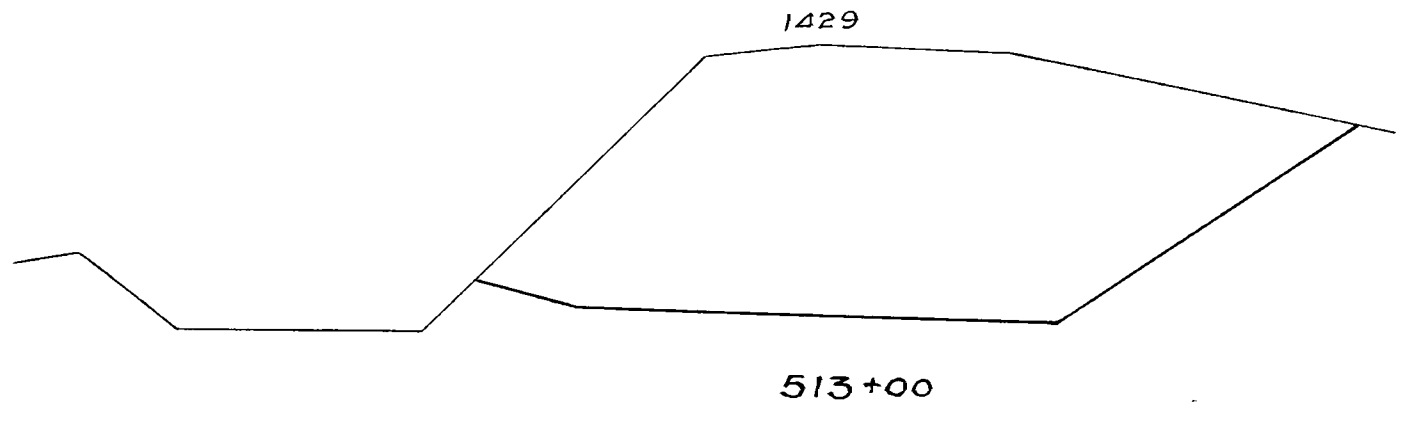
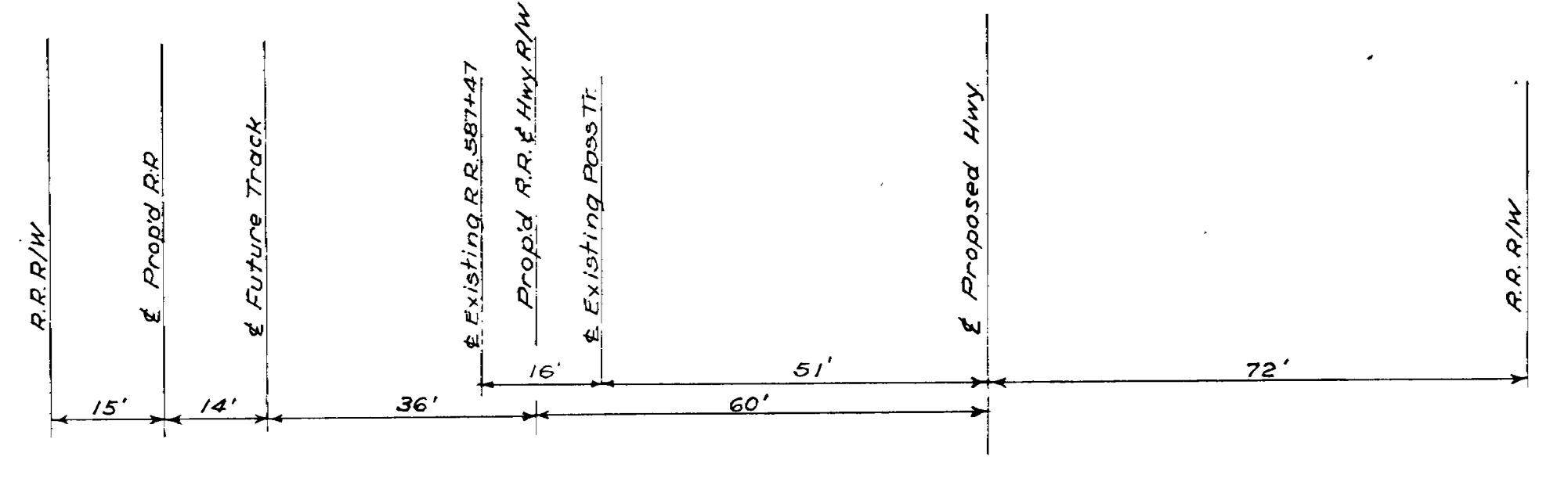
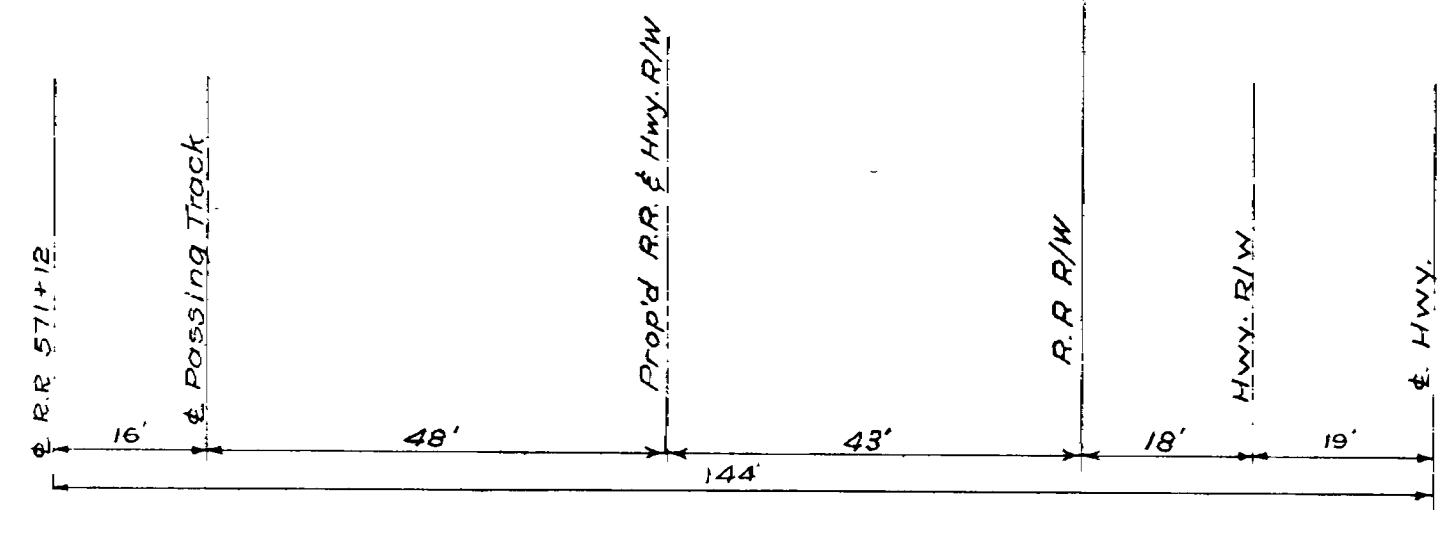
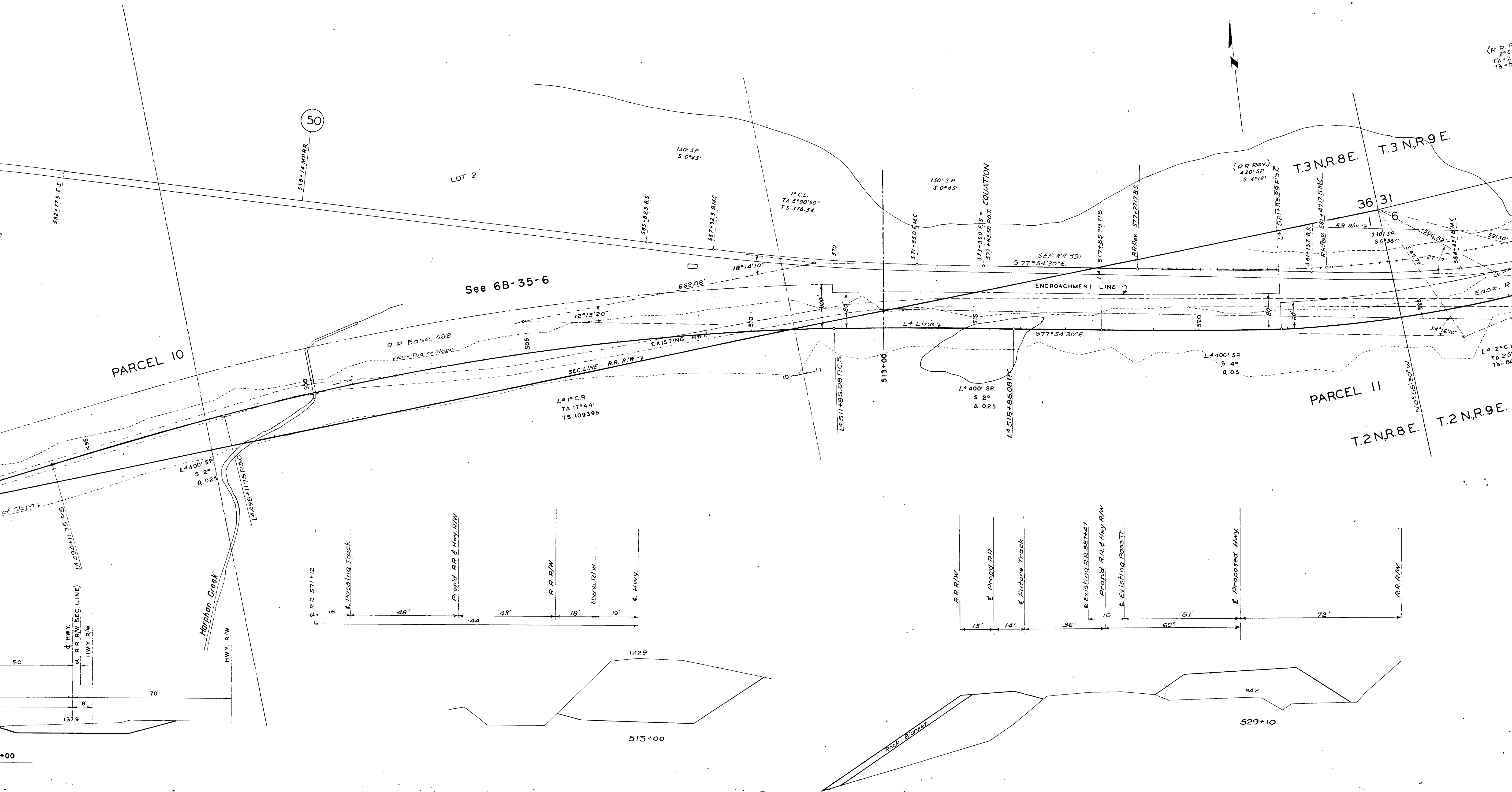
For Oregon State Highway Department

For Union Pacific Railroad

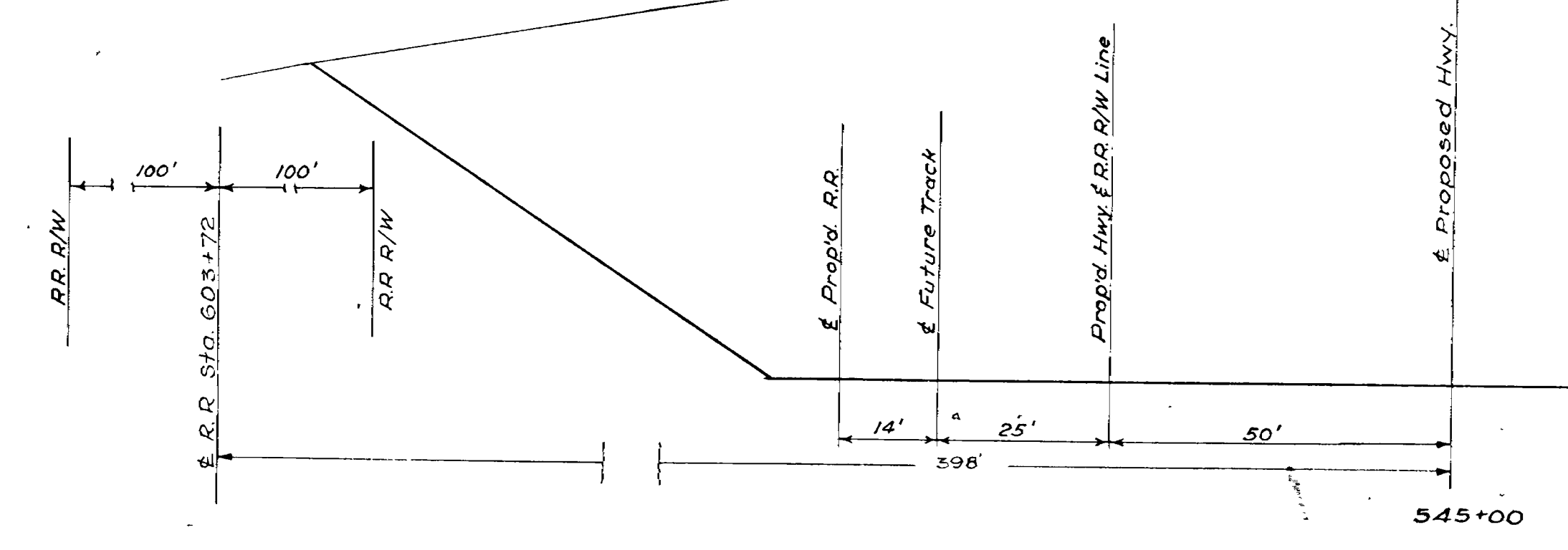
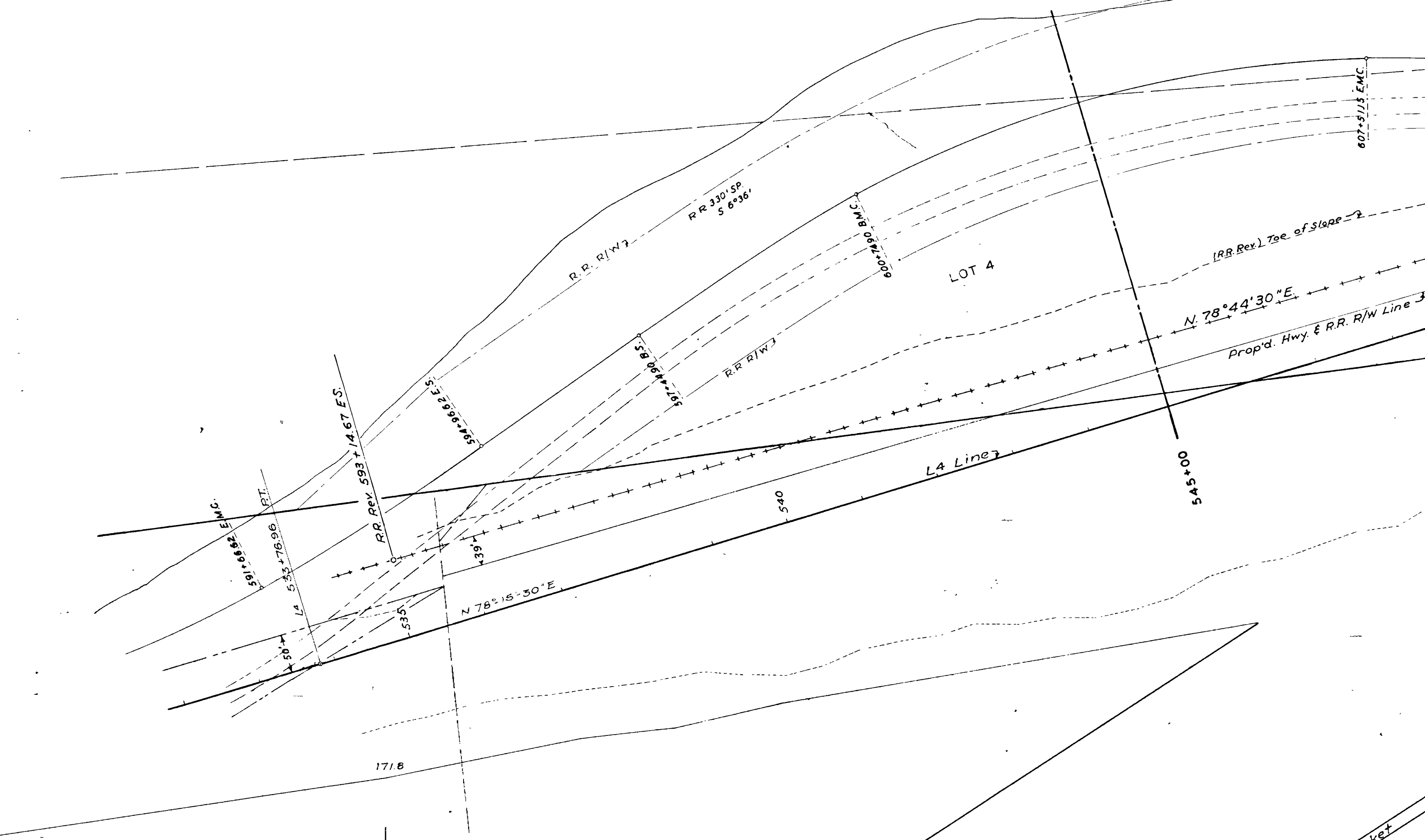
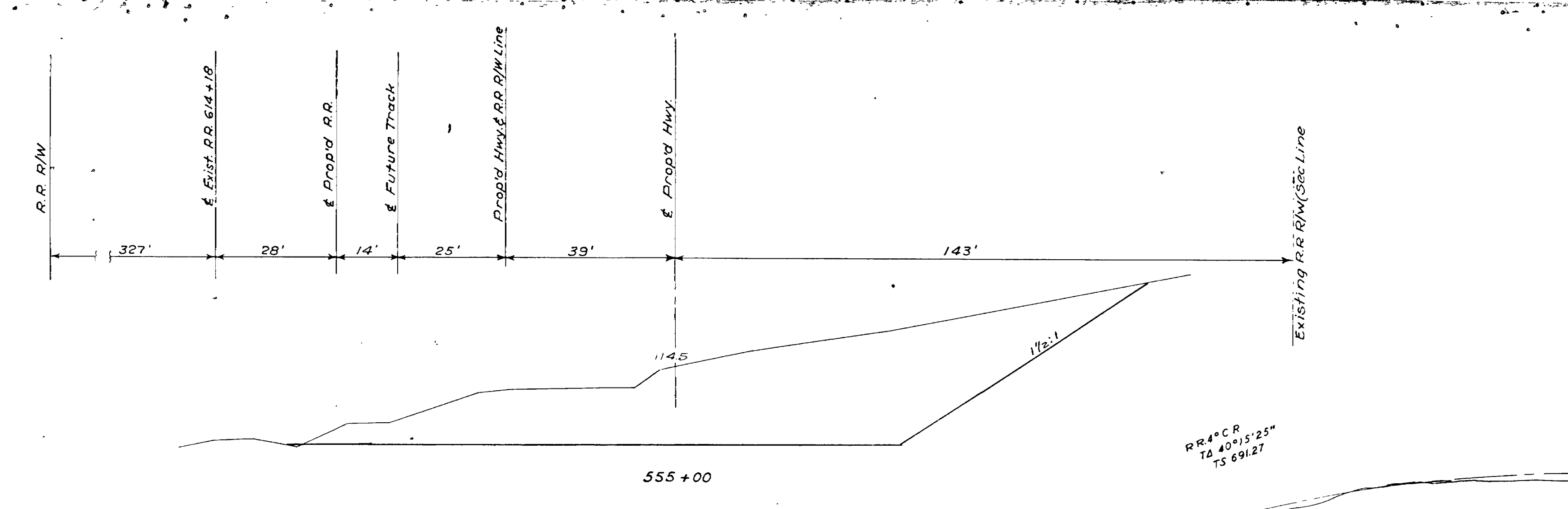
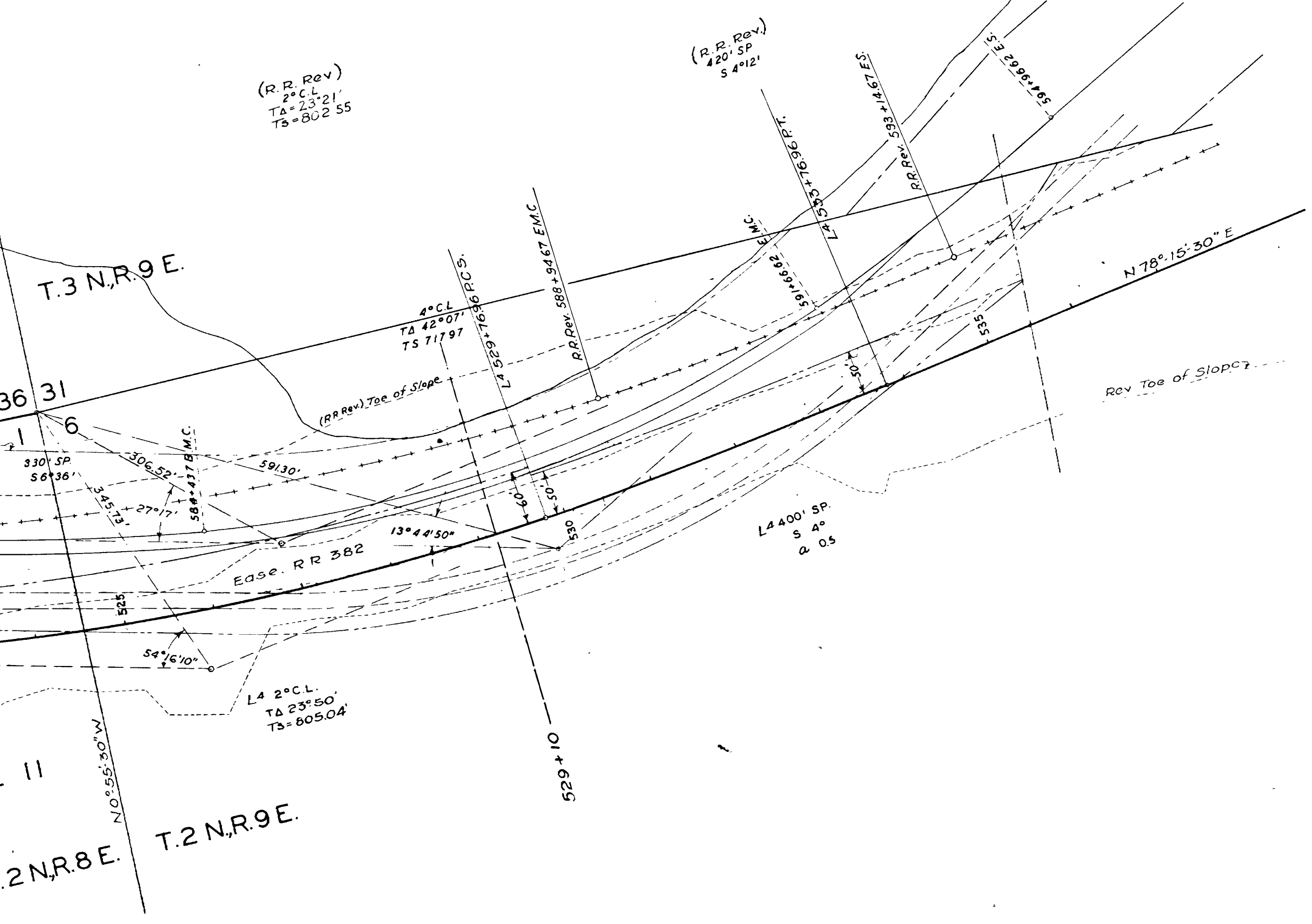


490+00

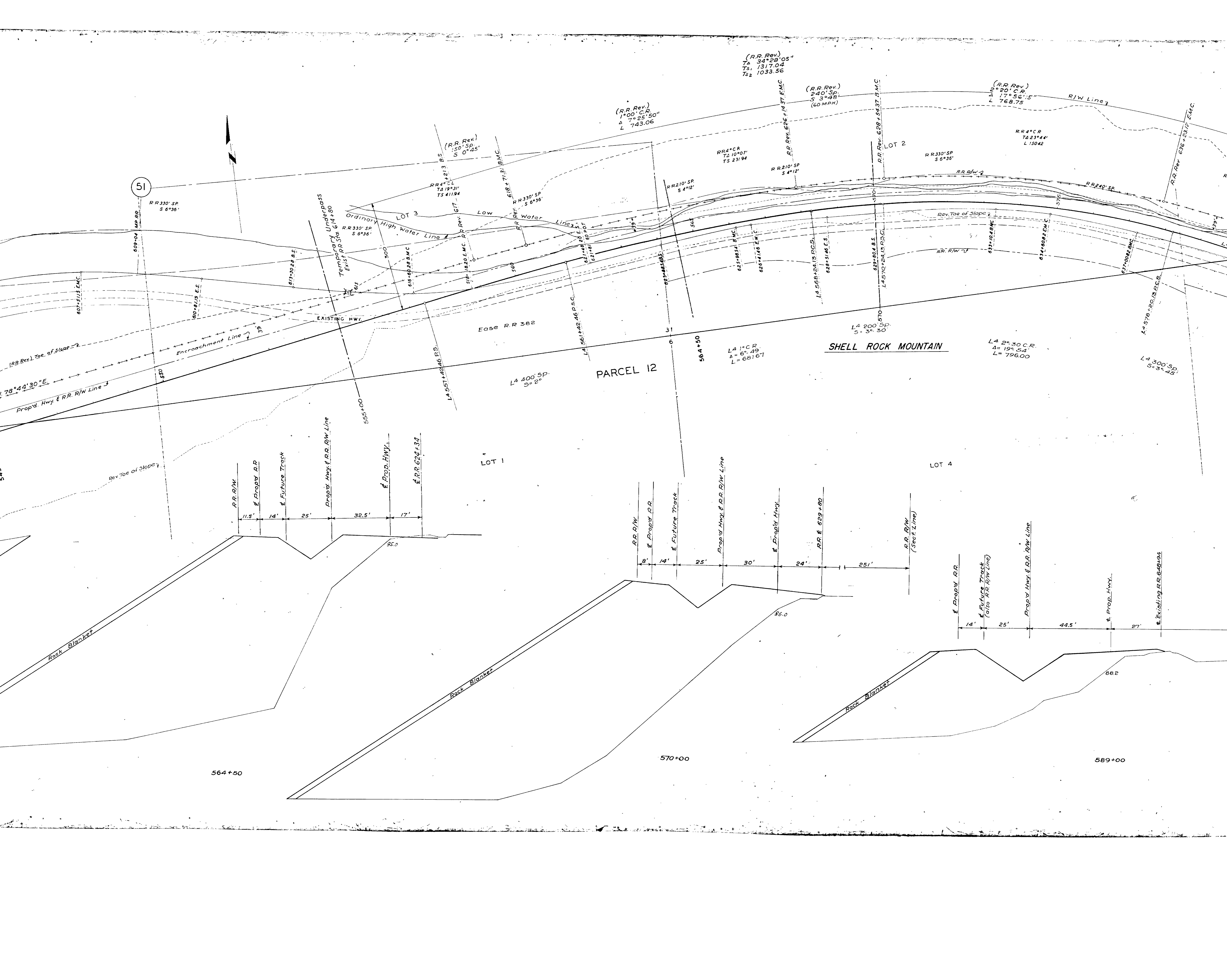
COLUMBI



# COLUMBIA RIVER



Rock Blanket



51

SHELL ROCK MOUNTAIN

PARCEL 12

LOT 1

LOT 4

Rock Blanket

Rock Blanket

Rock Blanket

564+50

570+00

589+00

(R.R. Rev.)  
TA 34°28'05"  
TS 1317.04  
Ts2 1033.56

(R.R. Rev.)  
240' SP,  
S 3°48'  
(60 MPH)

(R.R. Rev.)  
2°20' CR  
A 17°56'15"  
L 768.75

(R.R. Rev.)  
150' SP,  
S 0°45'

(R.R. Rev.)  
1°00' CR  
A 7°25'50"  
L 743.06

RR4°CR  
T2 10°07'  
TS 231.94

RR210' SP  
S 4°12'

RR330' SP  
S 6°36'

RR4°CR  
T2 23°44'  
L 130.42

RR4°CR  
T2 19°31'  
TS 411.94

RR330' SP  
S 6°36'

RR210' SP  
S 4°12'

RR330' SP  
S 6°36'

RR240' SP

RR Rev 636+2317 E.M.C.

(RR Rev.) Toe of Slope

Encroachment Line

EXISTING HWY.

Ease RR 382

L4 400' SP,  
S=2°

L4 1°CR  
A=6° 49'  
L=68167

L4 200' SP,  
S=3° 30'

L4 2°50' CR  
A=19° 54'  
L=796.00

L4 300' SP,  
S=3° 45'

RR R/W  
& Prop'd R.R.  
& Future Track  
Prop'd Hwy & R.R. R/W Line  
& Prop. HWY.  
& R.R. 624+34

RR R/W  
& Prop'd R.R.  
& Future Track  
Prop'd Hwy & R.R. R/W Line  
& Prop'd Hwy.  
RR 629+80  
RR R/W  
(See Line)

& Prop'd R.R.  
& Future Track  
(also RR R/W Line)  
Prop'd Hwy & R.R. R/W Line  
& Prop'd Hwy.  
& Existing RR Right

Prop'd Hwy & R.R. R/W Line

Rev. Toe of Slope

Encroachment Line

EXISTING HWY.

Ease RR 382

L4 400' SP,  
S=2°

L4 1°CR  
A=6° 49'  
L=68167

L4 200' SP,  
S=3° 30'

L4 2°50' CR  
A=19° 54'  
L=796.00

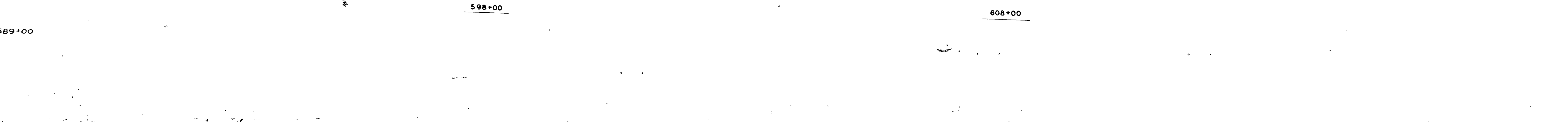
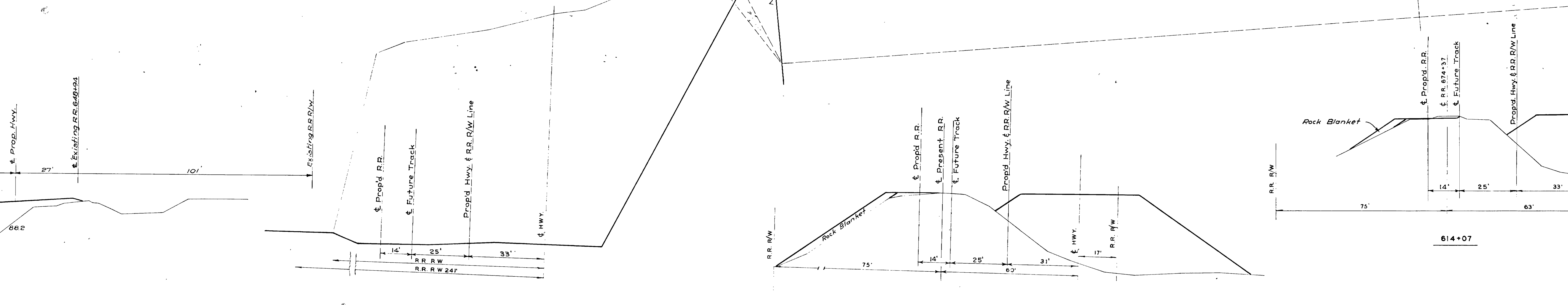
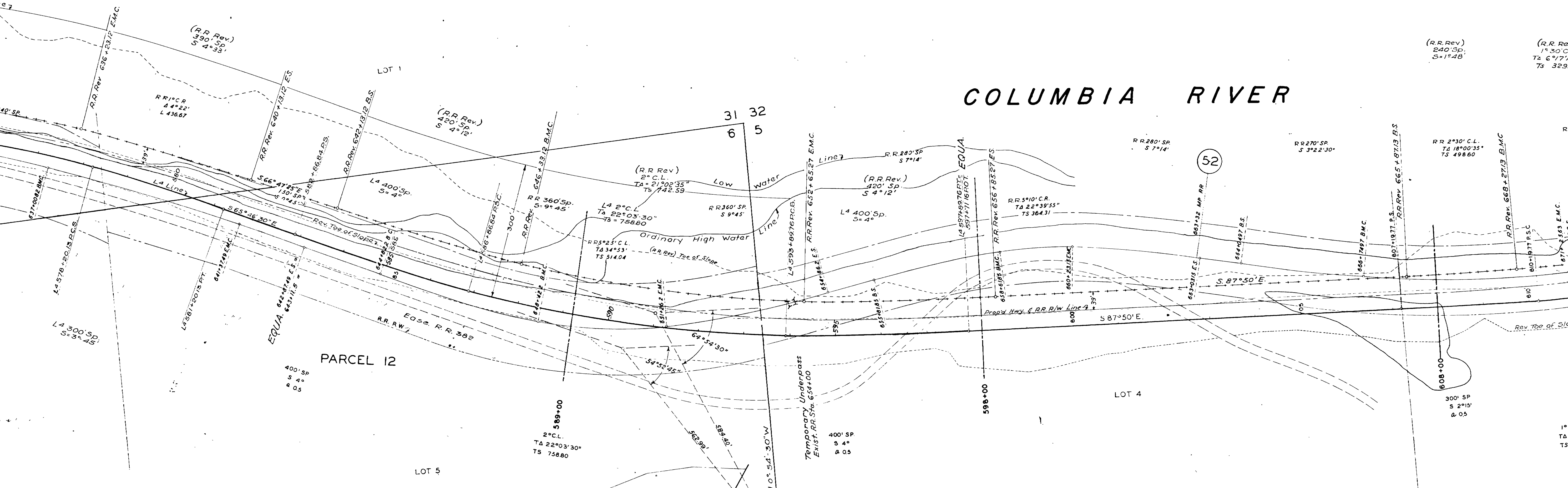
L4 300' SP,  
S=3° 45'

RR R/W  
& Prop'd R.R.  
& Future Track  
Prop'd Hwy & R.R. R/W Line  
& Prop. HWY.  
& R.R. 624+34

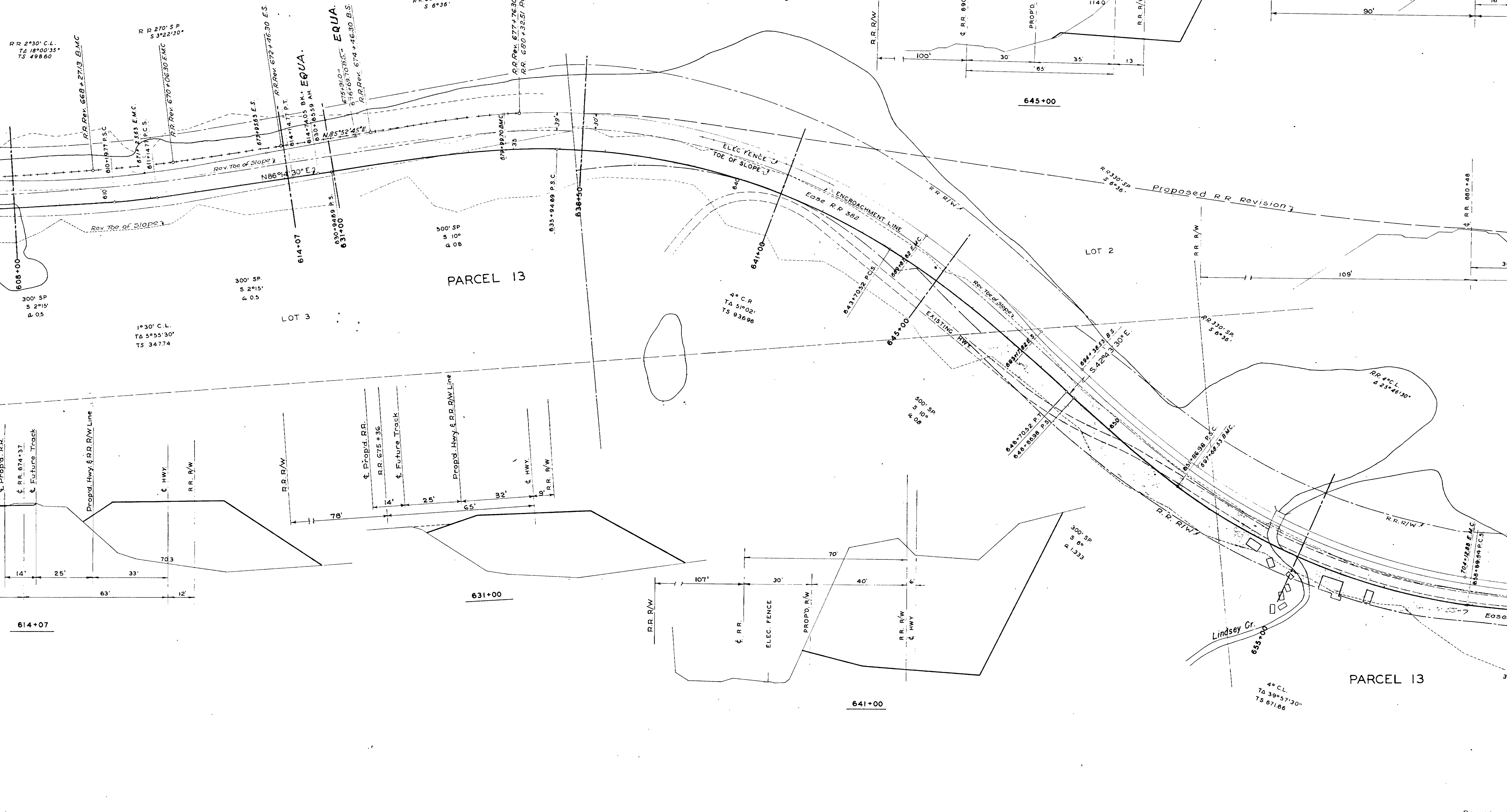
RR R/W  
& Prop'd R.R.  
& Future Track  
Prop'd Hwy & R.R. R/W Line  
& Prop'd Hwy.  
RR 629+80  
RR R/W  
(See Line)

& Prop'd R.R.  
& Future Track  
(also RR R/W Line)  
Prop'd Hwy & R.R. R/W Line  
& Prop'd Hwy.  
& Existing RR Right

# COLUMBIA RIVER



(RR Rev) 240 SP S 1° 28' TA 18° 00' 35" TS 498.80  
(RR Rev) 1° 30' C.L. TA 6° 7' 15" TS 329.83  
(RR Rev) 240 SP S 1° 48' TA 270° S P S 3° 22' 10"  
(RR Rev) 330 SP S 6° 36' TA 330° S P S 3° 22' 10"



RR 2° 30' C.L. TA 18° 00' 35" TS 498.80

RR 270° S P S 3° 22' 10"

RR Rev 668+274.3 BMC  
RR Rev 670+06.30 EMC  
RR Rev 672+16.30 ES

RR Rev 677+76.30 BMC

RR Rev 680+32.51 POC

RR Rev 674+46.30 BS

RR Rev 680+48

RR Rev 680+48

RR Rev 680+48

RR Rev 680+48

RR Rev 680+48

RR Rev 680+48

RR Rev 680+48

RR Rev 680+48

RR Rev 680+48

RR Rev 680+48

RR Rev 680+48

RR Rev 680+48

RR Rev 680+48

RR Rev 680+48

RR Rev 680+48

RR Rev 680+48

RR Rev 680+48

RR Rev 680+48

RR Rev 680+48

RR Rev 680+48

RR Rev 680+48

RR Rev 680+48

RR Rev 680+48

RR Rev 680+48

RR Rev 680+48

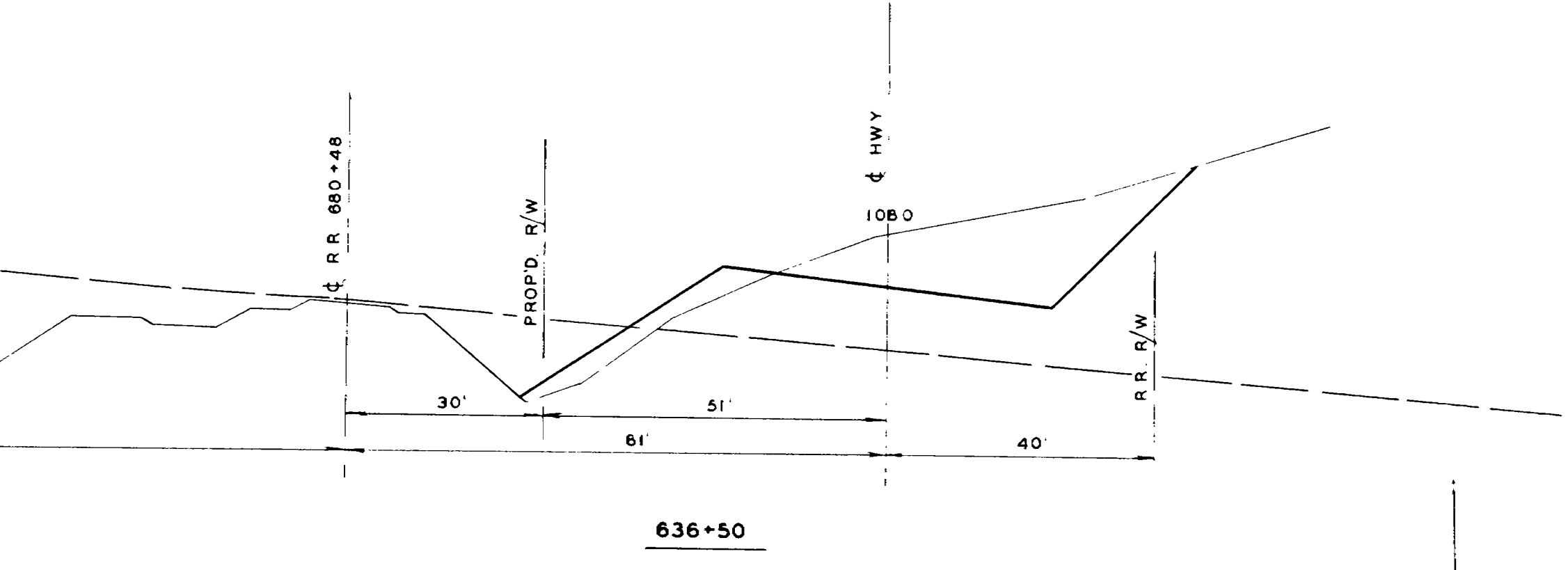
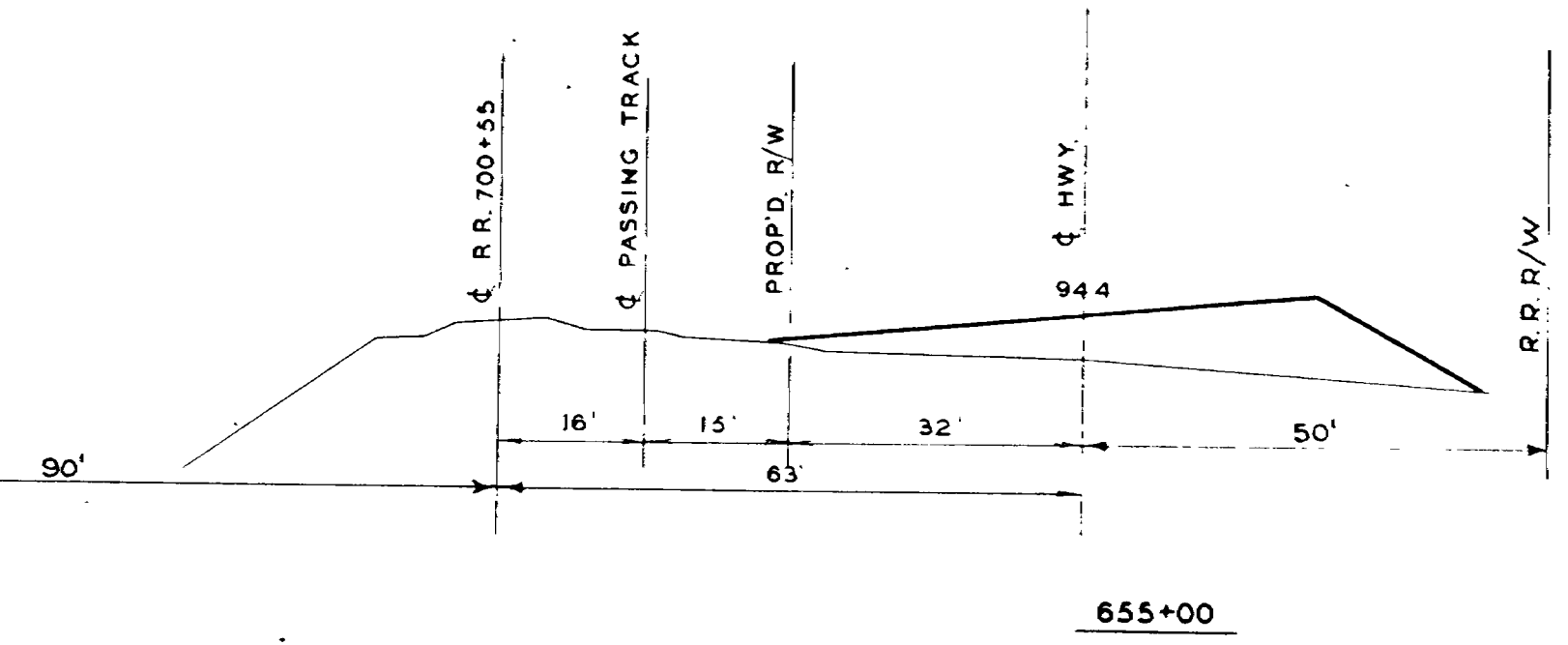
RR Rev 680+48

RR Rev 680+48

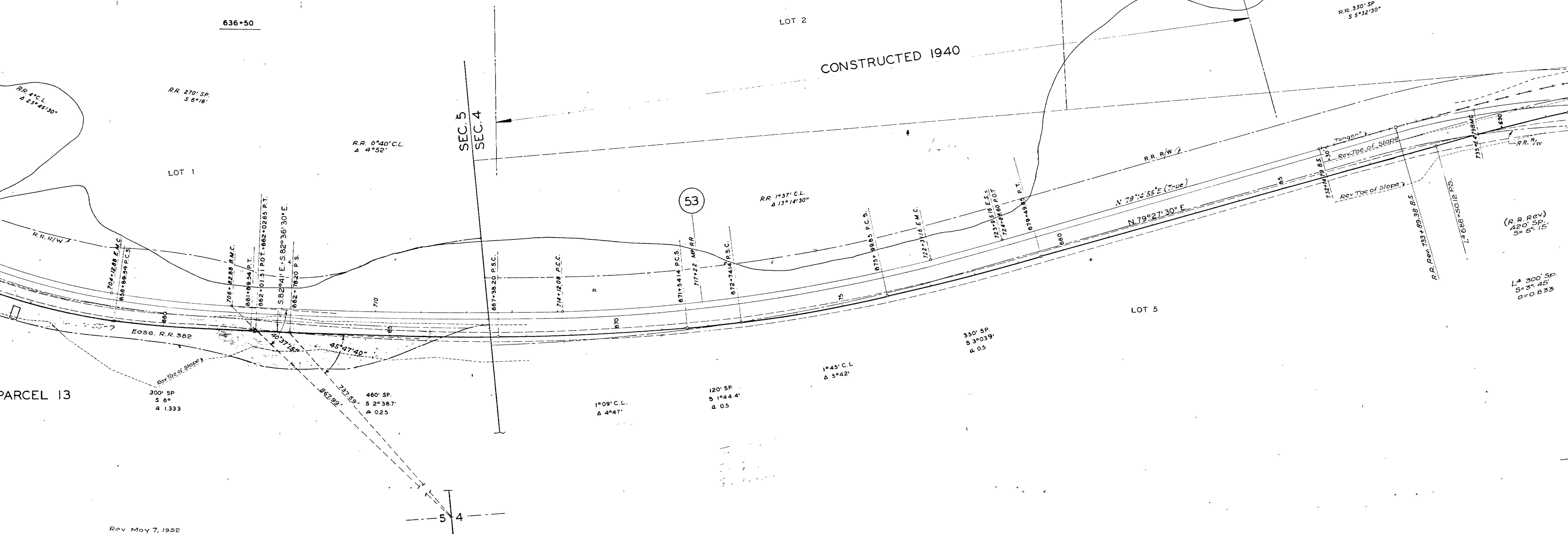
RR Rev 680+48

PARCEL 13

PARCEL 13



COLUMBIA RIVER



Rev May 7, 1952

RR 3° 10' C.R.  
T4 19° 16'  
TS 482.64

RR 330' SP  
S 5° 32' 30''

(RR REV)  
120' SP  
S 5° 15'  
Δ 0.853

L4 300 SP  
S 3° 45'  
Δ 0.853

350' SP  
S 3° 03.9'  
Δ 0.5

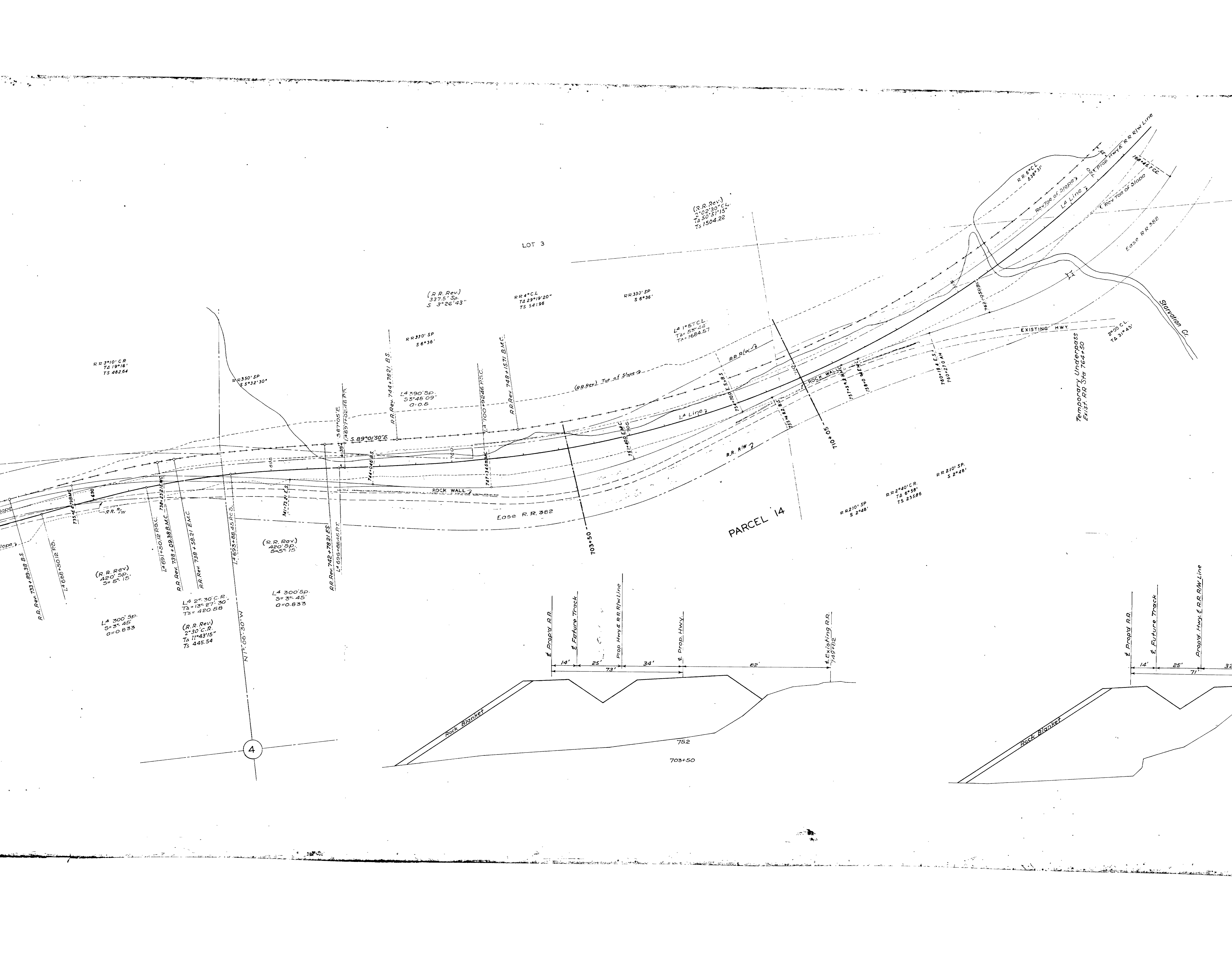
1° 45' C.L.  
Δ 5° 42'

120' SP  
S 1° 44.4'  
Δ 0.5

1° 09' C.L.  
Δ 4° 47'

460' SP.  
S 2° 38.7'  
Δ 0.25

300' SP  
S 6°  
Δ 1.333



LOT 3

PARCEL 14

4

RR 3°10' C.R.  
TΔ 19°16'  
TS 482.64

RR 350' SP  
S 5°32'30"

(R.R. Rev.)  
337.5' Sp.  
S 3°26'43"

RR 4° CL  
TΔ 23°19'20"  
TS 541.96

RR 330' SP  
S 6°36'

(R.R. Rev.)  
2°02'30" C.L.  
TΔ 50°51'15"  
TS 1504.22

LΔ 1°57' C.L.  
TΔ 55°24'  
TS 1684.57

RR 330' SP  
S 6°36'

LΔ 390' Sp.  
S 5°48'09"  
O=0.6

RR Rev. 744+782' B.S.

RR Rev. 748+157' B.M.C.

LΔ 390' Sp.  
S 5°48'09"  
O=0.6

RR Rev. 748+157' B.M.C.

(R.R. Rev.) Top of Slope

RR R/W 3

SO 0.01

EXISTING HWY

Temporary Underpass  
EXIST. RR Sta. 764+50

2°00' C.L.  
TΔ 31°45'

Station Cr.

(R.R. Rev.)  
120' Sp.  
S 5°15'

LΔ 691'±50.12' P.S.C.  
TΔ 122°22'44"

RR Rev. 738+109.38' B.M.C.

RR Rev. 738+38.2' E.M.C.

LΔ 693'±88.25' P.S.

(R.R. Rev.)  
120' Sp.  
S 5°15'

LΔ 300' Sp.  
S 3°48'  
O=0.833

RR Rev. 742+782' E.S.

LΔ 693'±88.25' P.S.

LΔ 391'±88.25' P.S.

LΔ 391'±88.25' P.S.

ROCK WALL

Ease R.R. 382

703+50

RR 210' SP  
S 2°48'

RR 2°40' C.R.  
TΔ 6°58'  
TS 235.86

RR 210' SP  
S 2°48'

LΔ 300' Sp.  
S 3°45'  
O=0.833

LΔ 2°30' C.R.  
TΔ 13°27'30"  
TS 420.58

(R.R. Rev.)  
2°30' C.R.  
TΔ 11°43'15"  
TS 445.54

N 7° 06' 30" W

Prop'd R.R.

Future Track

Prop. Hwy. & R.R. R/W Line

Prop. HWY.

Existing R.R.  
748+62

Prop'd R.R.

Future Track

Prop'd. Hwy. & R.R. R/W Line

14' 25' 73' 34' 62'

14' 25' 71' 32'

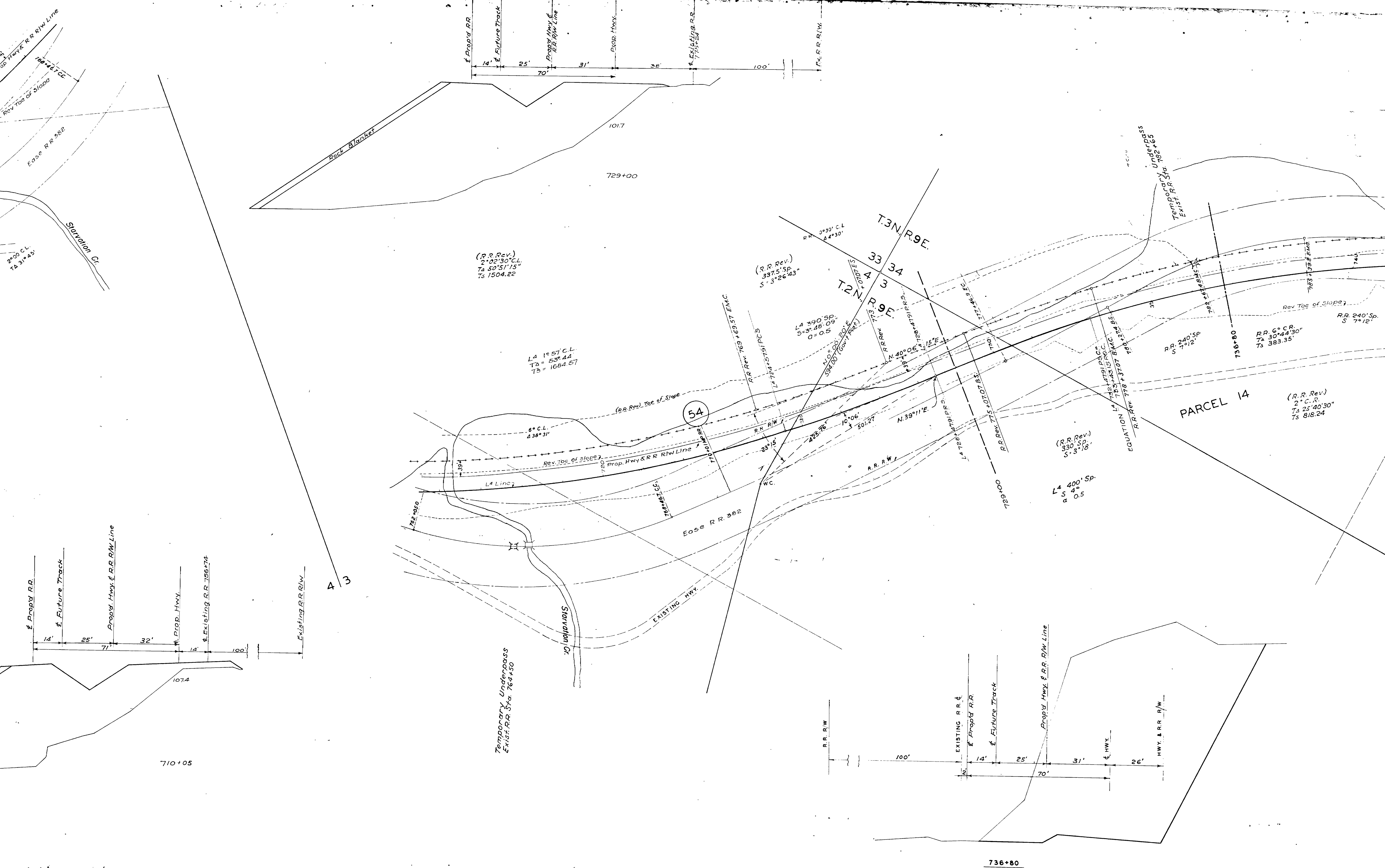
Rock Blanket

Rock Blanket

752

703+50





(R.R. Rev.)  
 2°02'30" C.L.  
 TA = 50°51'15"  
 TS = 1504.22

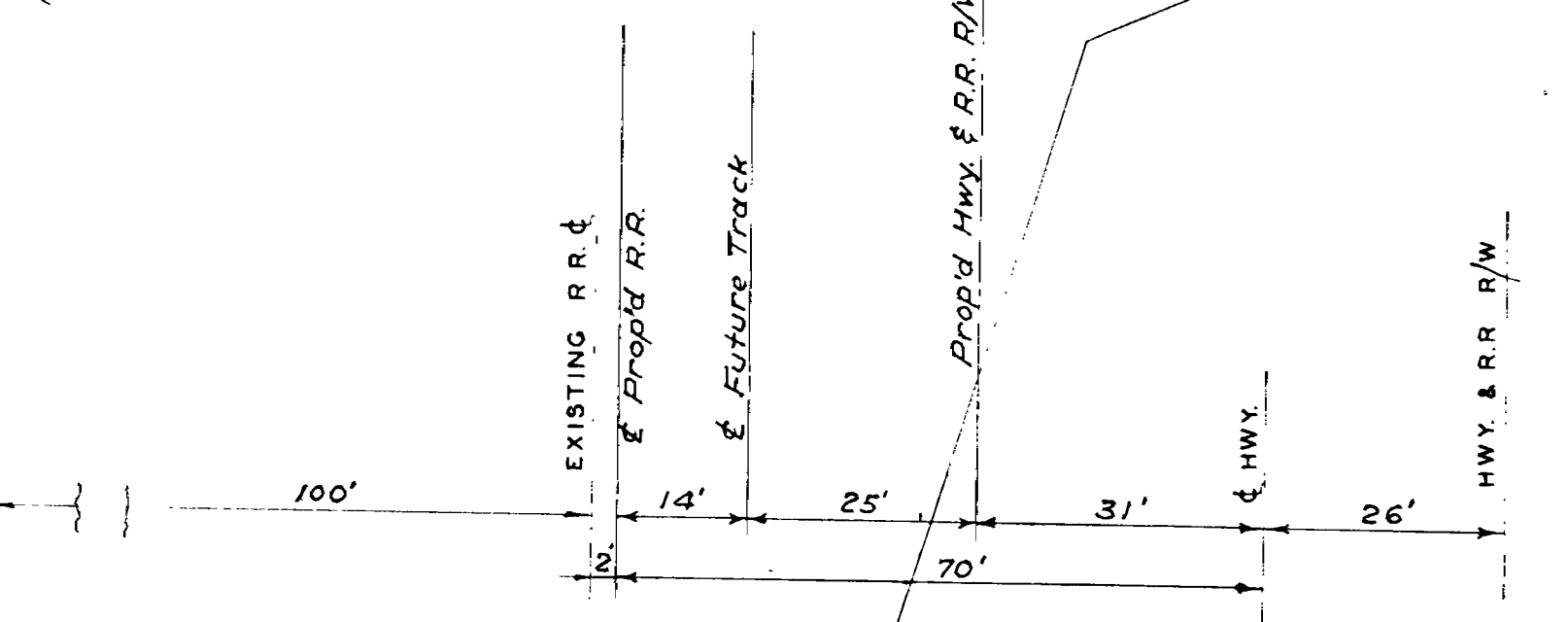
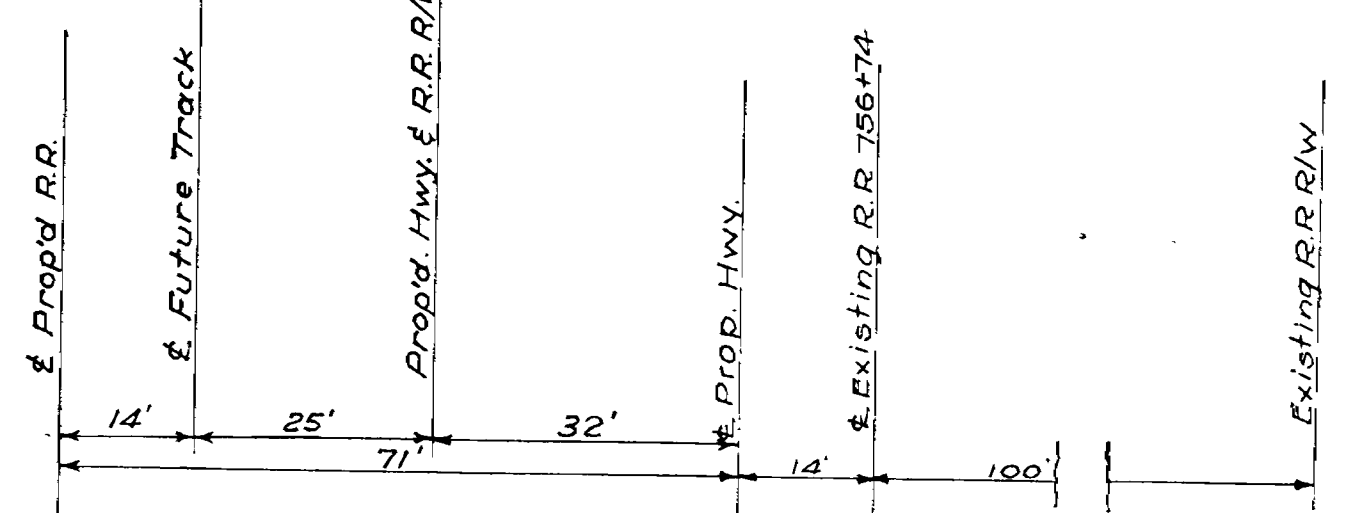
(R.R. Rev.)  
 337.5' Sp.  
 S = 3°26'43"

L4 1°57' C.L.  
 TA = 53°44'  
 TS = 1684.57

(R.R. Rev.)  
 2° C.R.  
 TA 25°40'30"  
 TS 818.24

(R.R. Rev.)  
 330' Sp.  
 S = 3°18'

L4 400' Sp.  
 S = 4°  
 a = 0.5

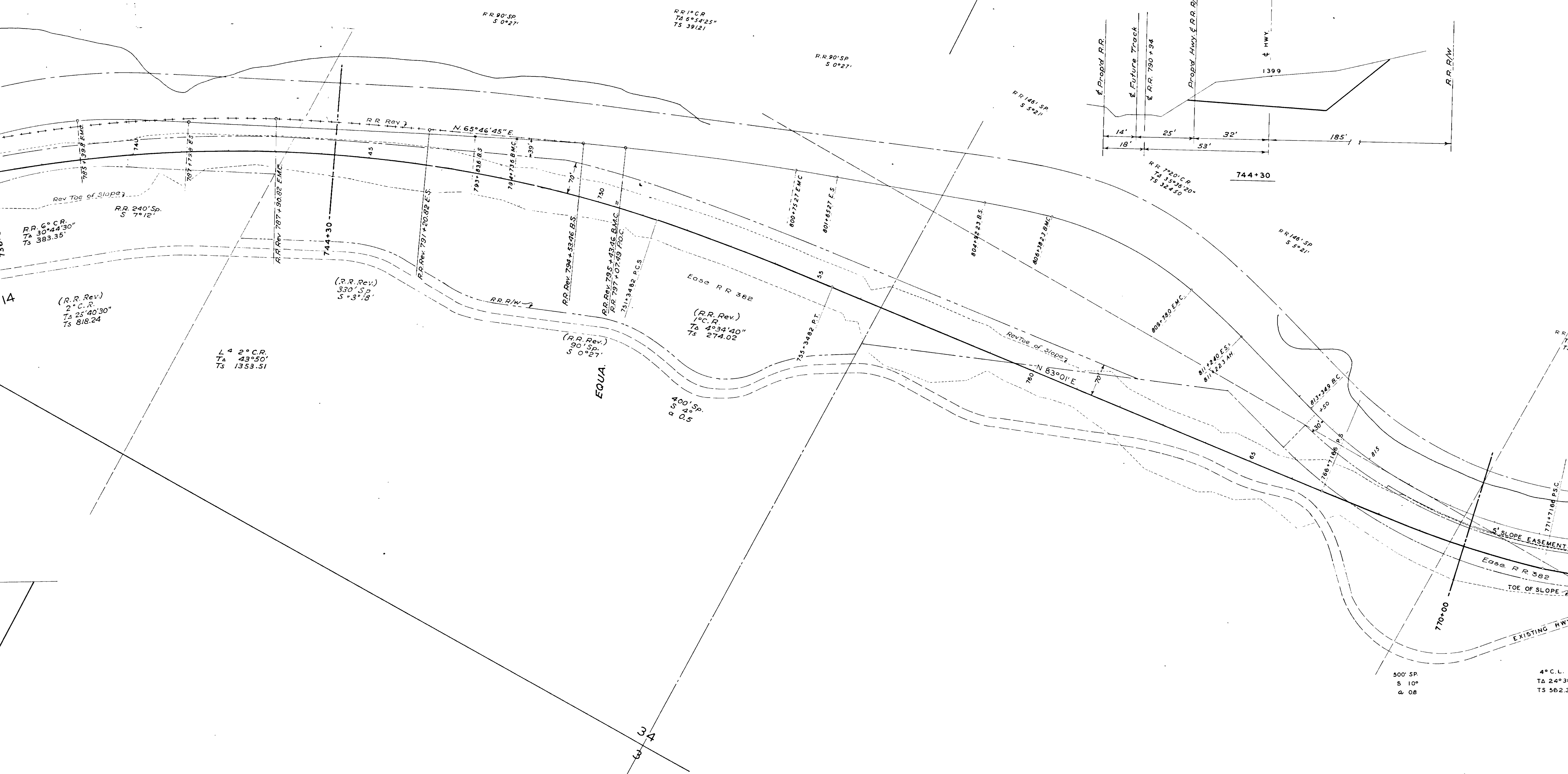


PARCEL 14

54

736+80

# COLUMBIA RIVER

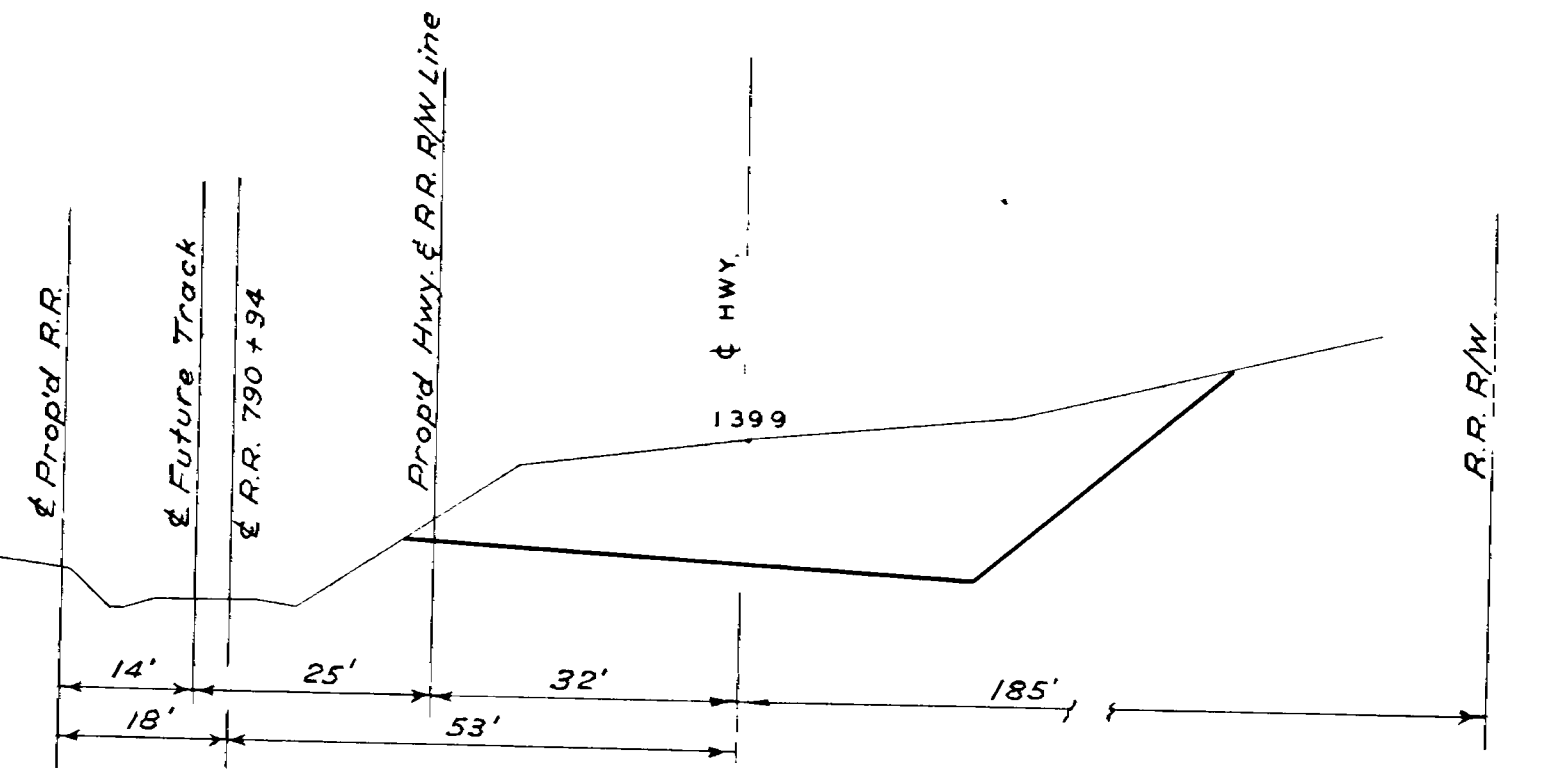


RR 90' SP  
S 0°27'

RR 1° C.R.  
TA 6°54'25"  
TS 39121

RR 90' SP  
S 0°27'

RR 146' SP  
S 5°21'



744+30

RR 1°20' C.R.  
TA 35°58'20"  
TS 32430

RR 146' SP  
S 5°21'

L 4 2° C.R.  
TA 43°50'  
TS 1353.51

(R.R. Rev.)  
90' Sp  
S 0°27'

Ease R R 382  
(R.R. Rev.)  
1° C.R.  
TA 4°34'40"  
TS 274.02

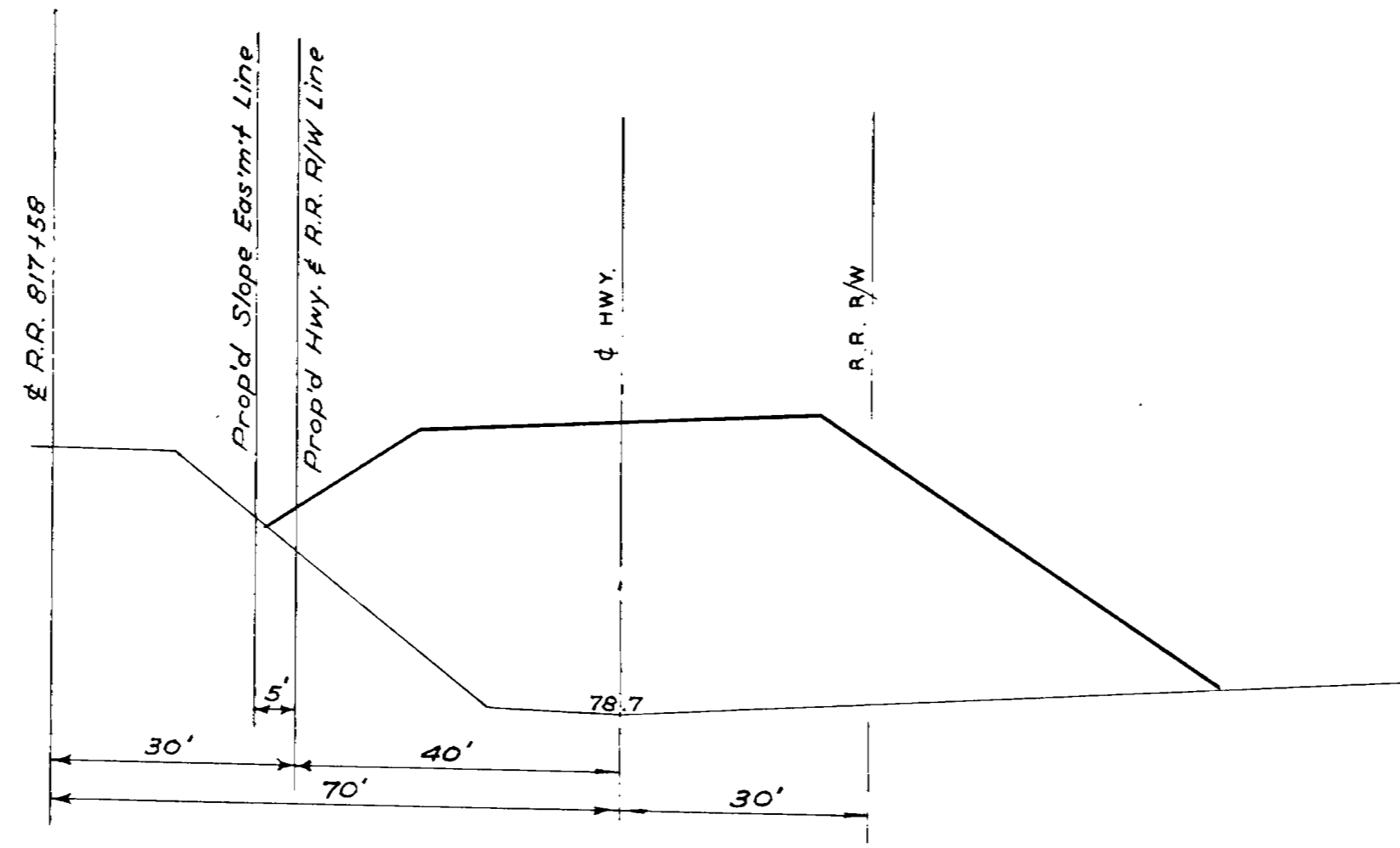
400' Sp  
R 5 4° 0.5

500' SP  
S 10°  
a. 08

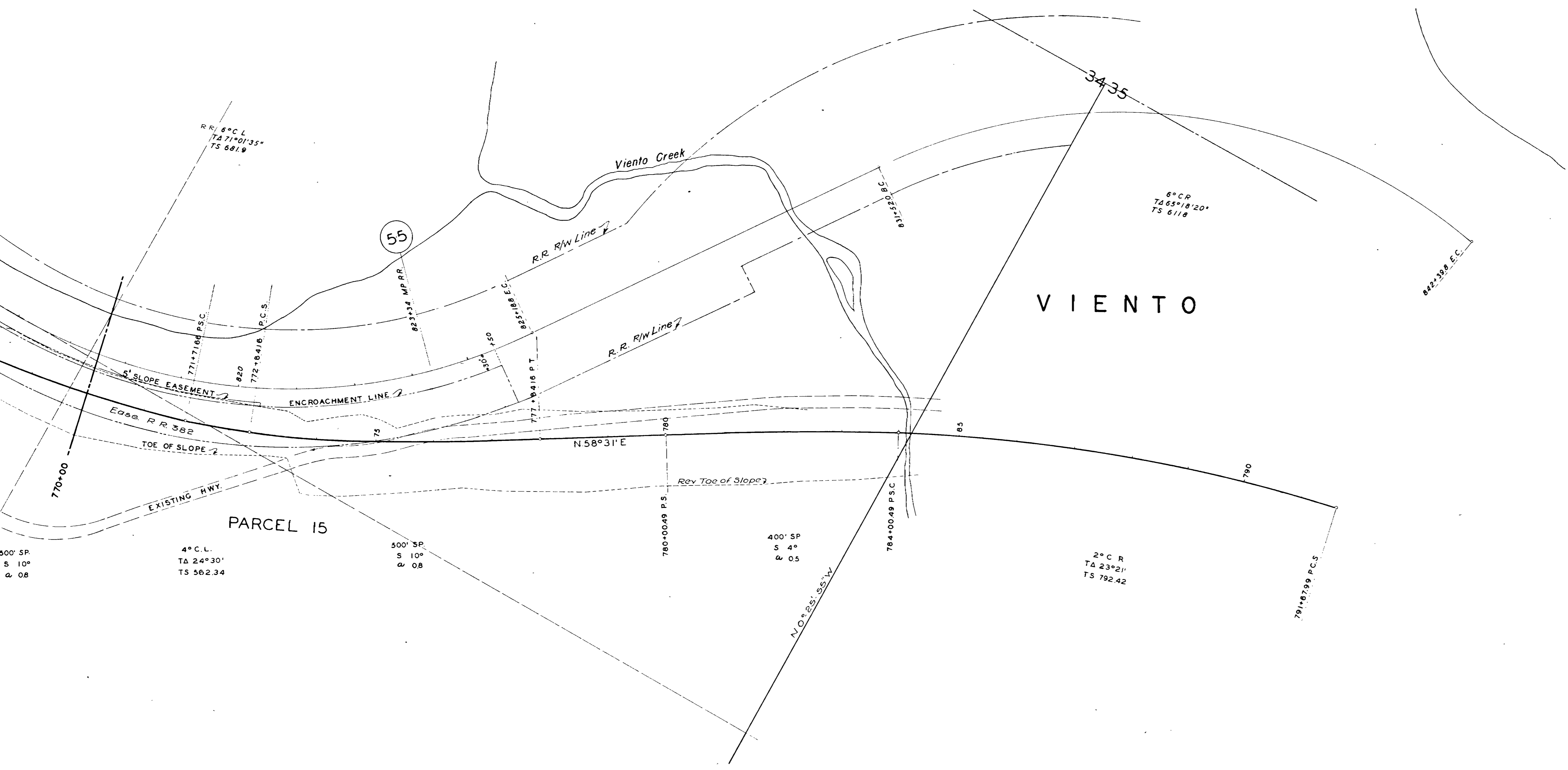
4° C.L.  
TA 24°30'  
TS 562.3

34  
6

R.R. R/W



770+00



PARCEL 15

VIENTO

GORTON CREEK - VIENTO SECTION  
DRG. NO. 5B-34-21