

OREGON DEPARTMENT OF TRANSPORTATION

EXHIBIT A

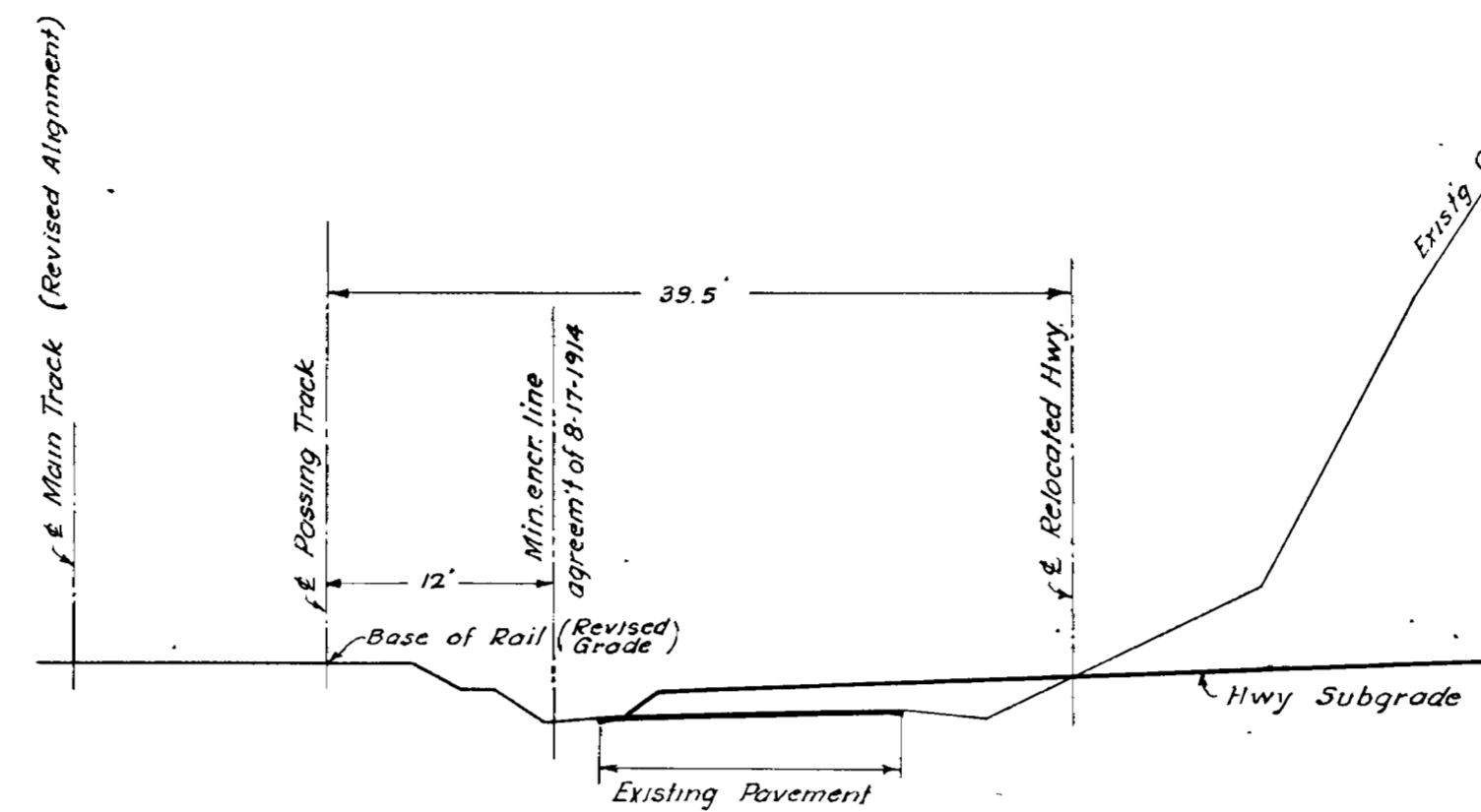
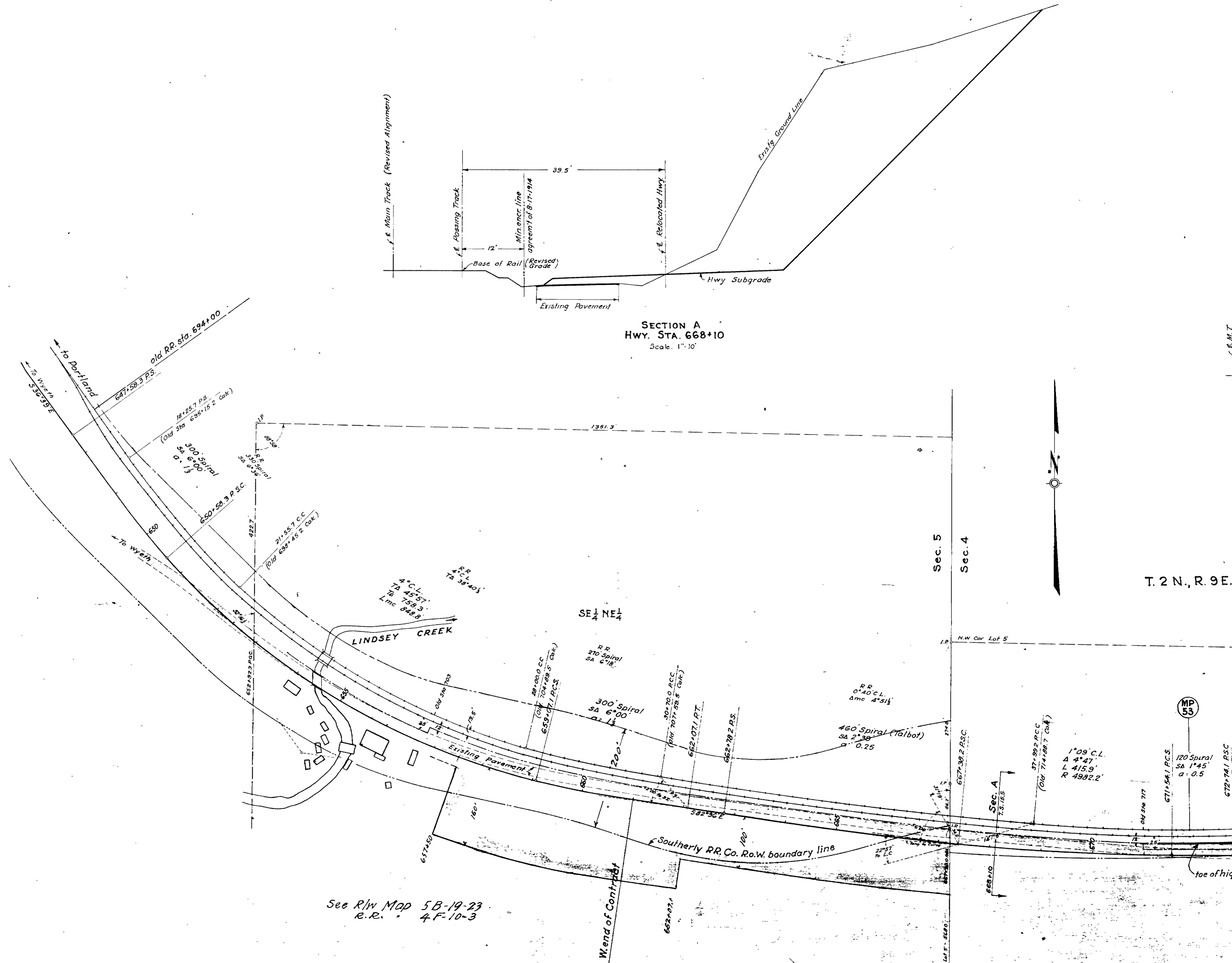
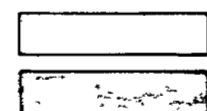
OREGON STATE HIGHWAY DEPARTMENT
Map Showing Encroachment of
COLUMBIA RIVER HIGHWAY
ON
O.W.R. & N. Co. PROPERTY
AT WARREN CREEK
HOOD RIVER COUNTY
SCALE: 1"=100' JULY 14, 1939

DRG. No. 5B-23-13

OREGON DEPARTMENT OF TRANSPORTATION

LEGEND

Limits of pavement, present highway, shaded
Easement area to be granted State, shaded

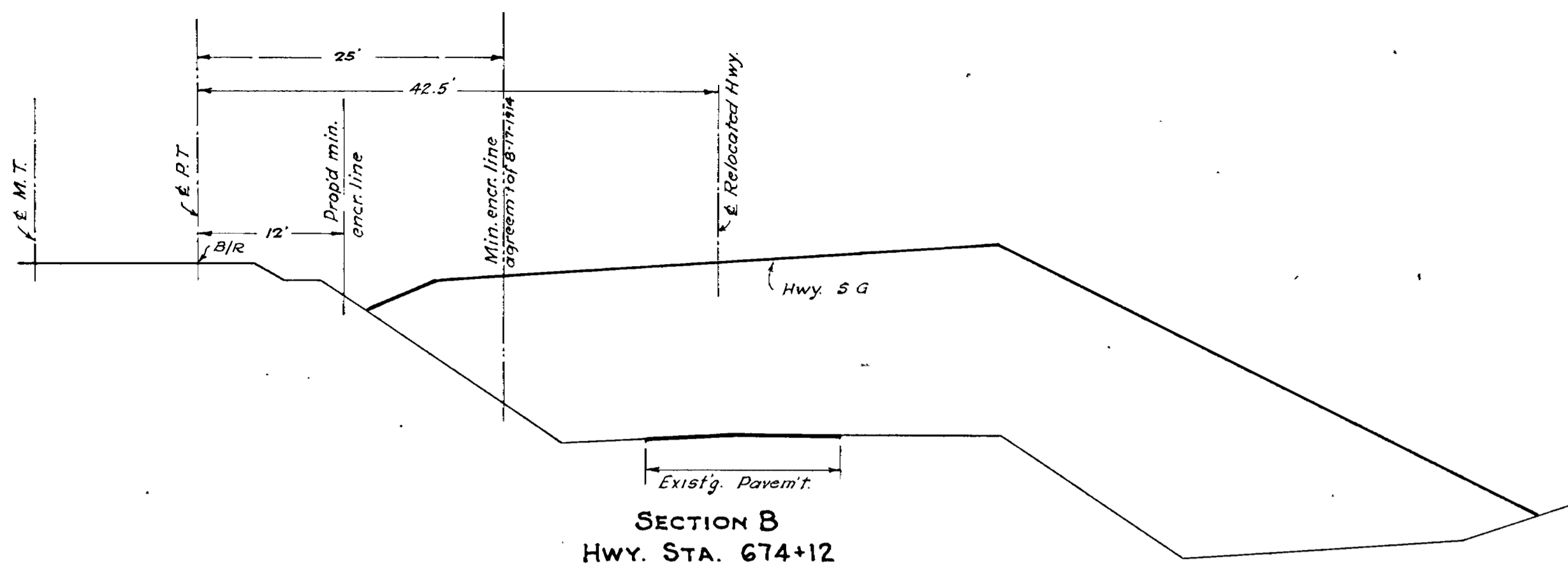


SECTION A
HWY. STA. 668+10
Scale: 1"=10'

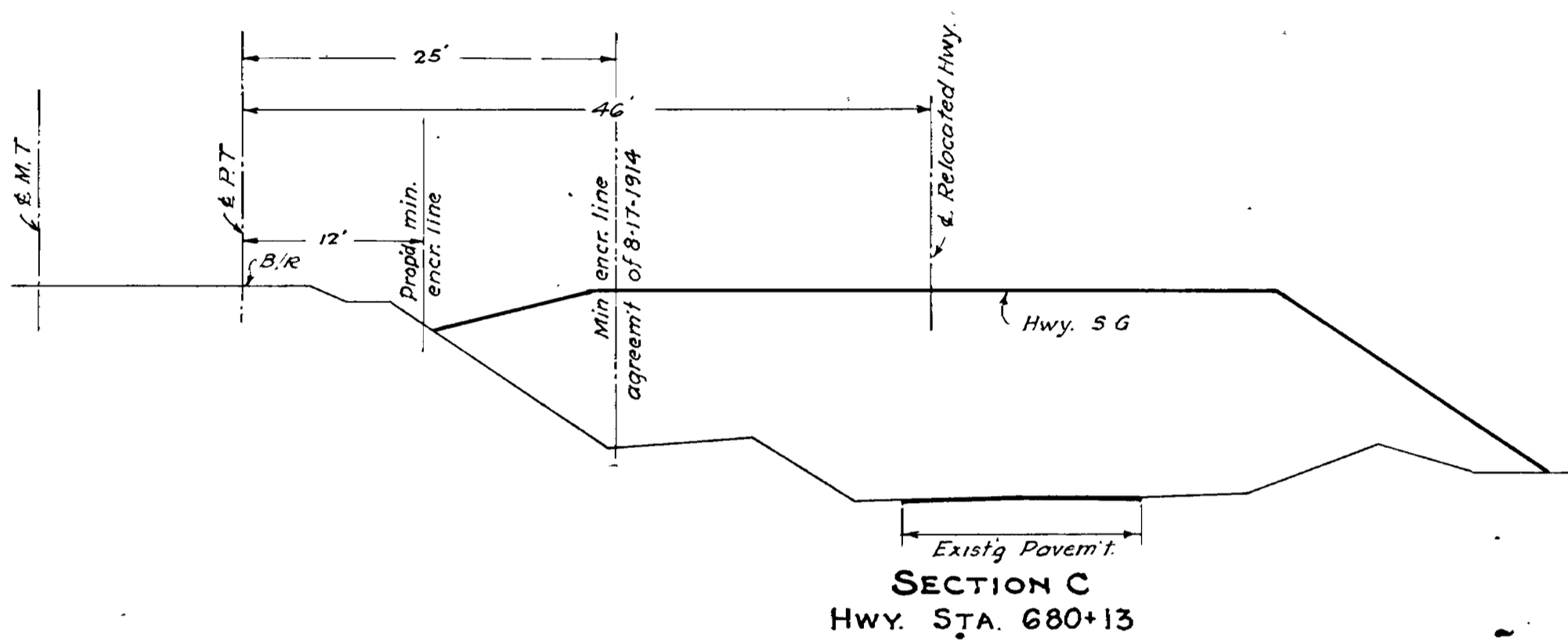
See R/W Map 5B-19-23
R.R. 4F-10-3

T. 2 N., R. 9 E.

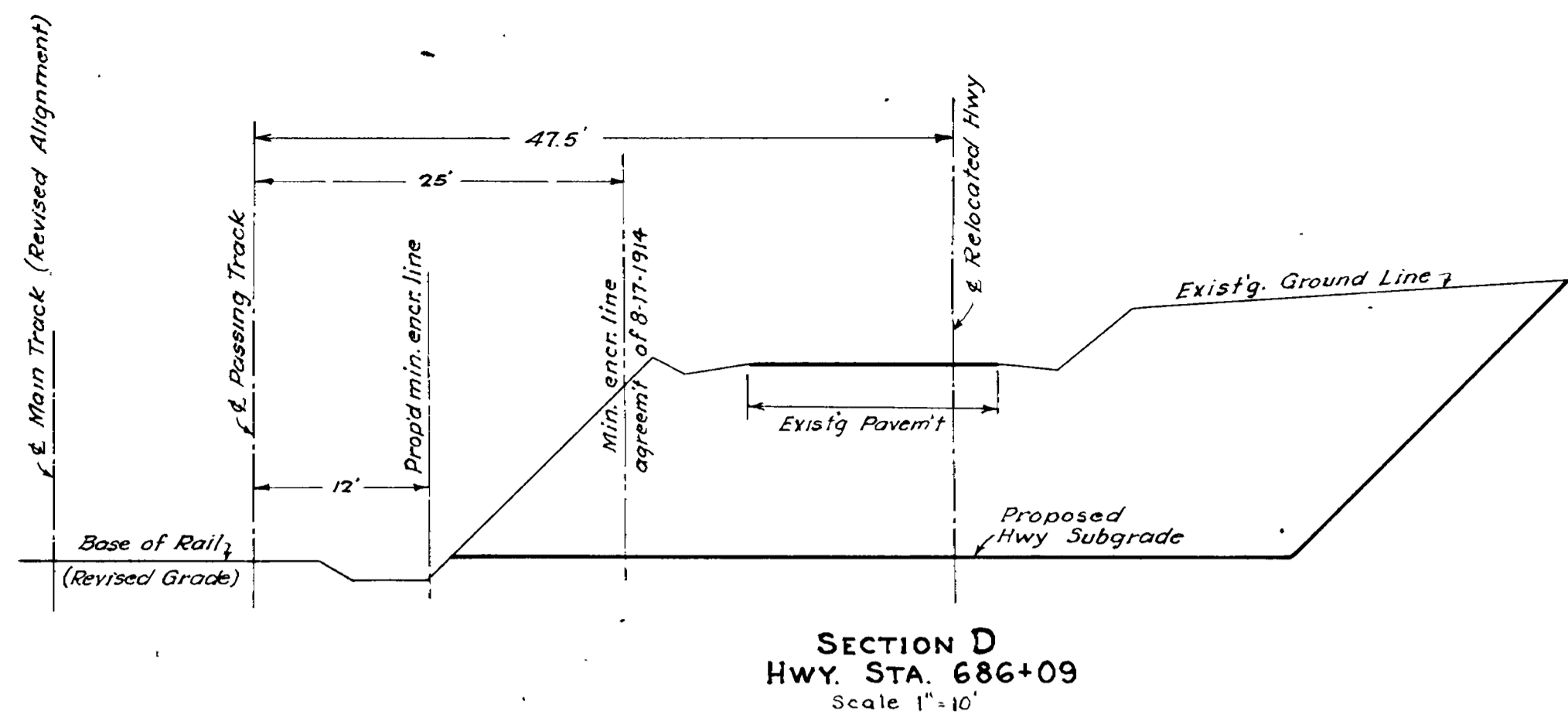
MP 53



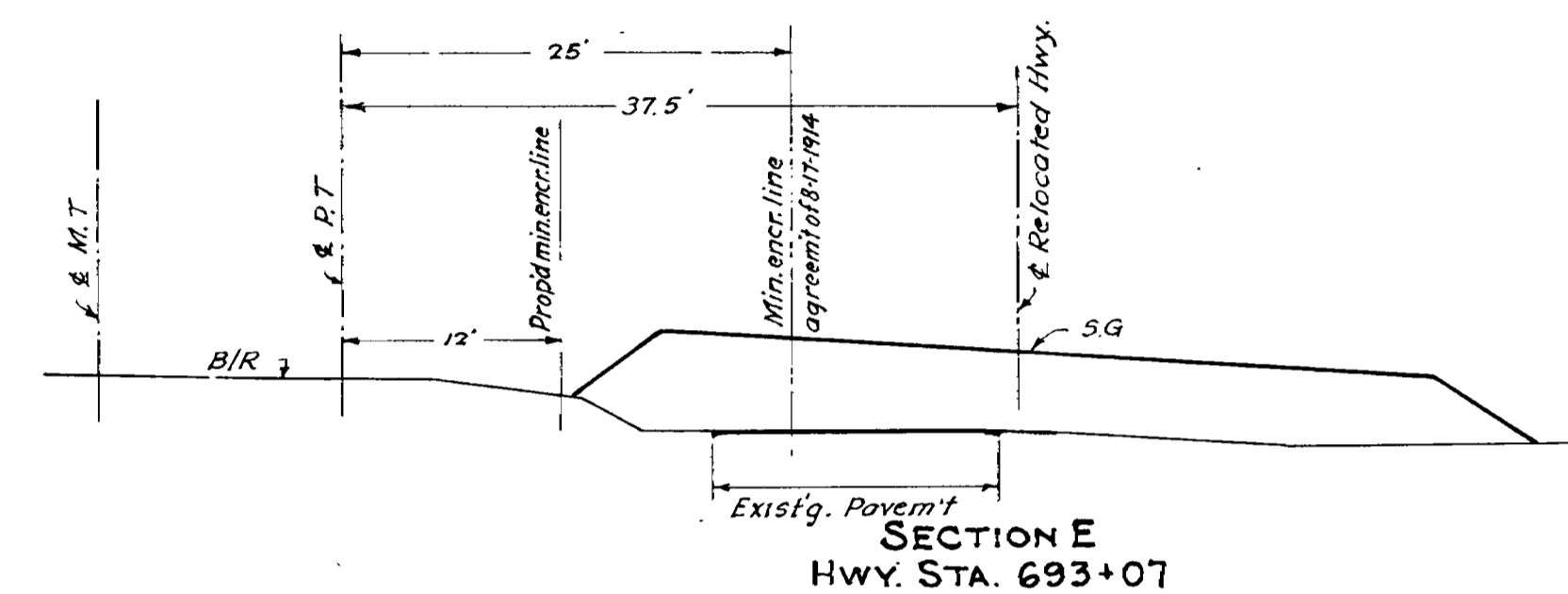
SECTION B
HWY. STA. 674+12



SECTION C
HWY. STA. 680+13



SECTION D
HWY. STA. 686+09
Scale 1"=10'



SECTION E
HWY. STA. 693+07

T. 2 N., R. 9 E., W. M.

